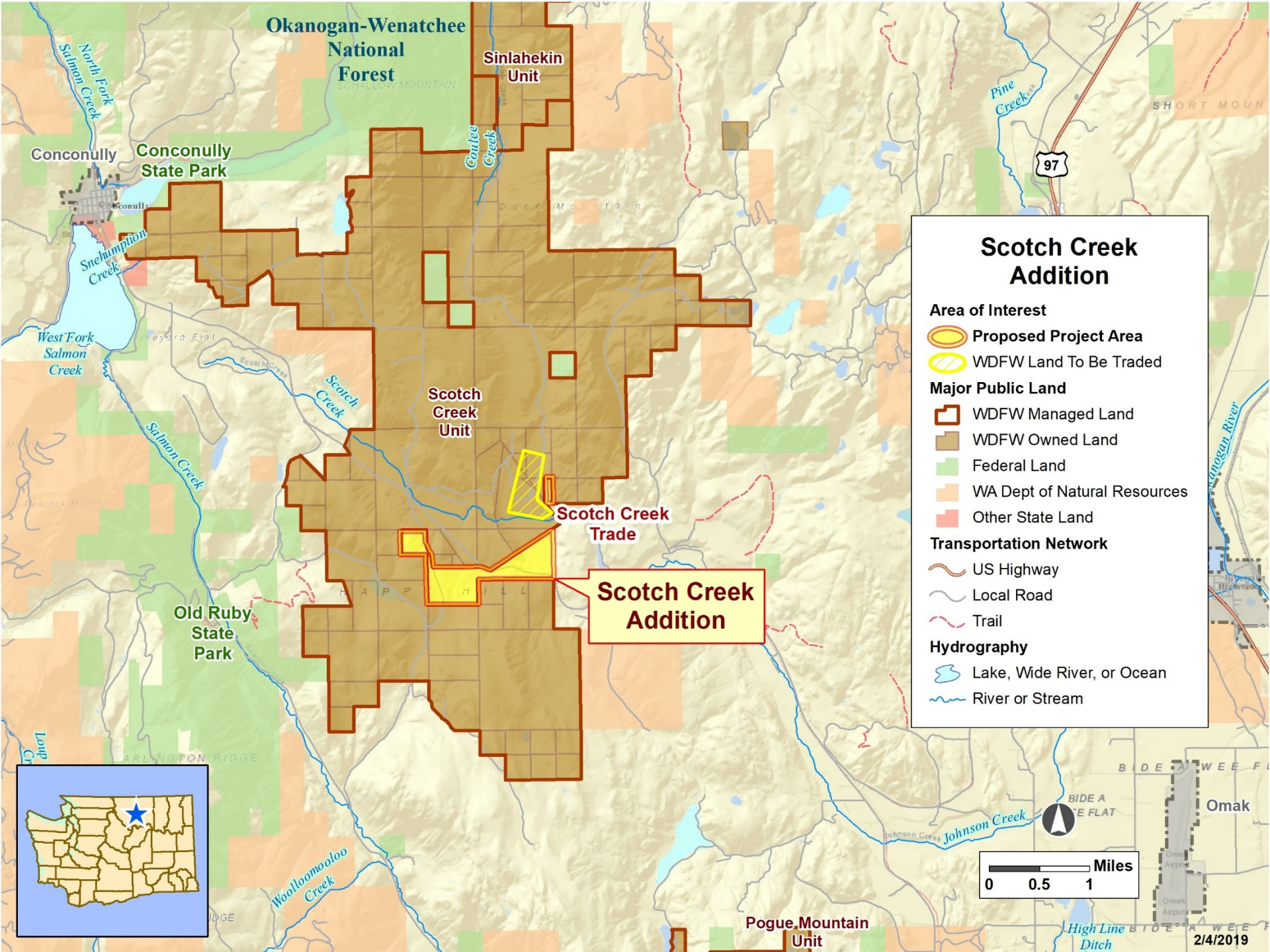


Scotch Creek Addition – 200 Acres



<p>Project Description</p>	<p>This project is a property trade to provide the Scotch Creek Wildlife Area with additional quality habitat for sharp-tail grouse, reduce the risk of development adjacent to a significant amount of Scotch Creek Wildlife Area and provide more efficient and effective management of the area by incorporating this inholding. WDFW would gain approximately 200 acres of shrubsteppe habitat, while divesting 88 acres of irrigated agricultural lands currently under lease.</p>
<p>Project Benefits</p>	<p>The trade will improve management of the overall wildlife area unit, and WDFW ownership would protect the area from future development. The trade also provides significant additional quality shrubsteppe that will benefit local sharp-tail grouse populations.</p>
<p>Support</p>	<p>Okanogan County Commissioners</p>



Okanogan-Wenatchee National Forest

Sinlahekin Unit

Conconully State Park

Scotch Creek Unit

Scotch Creek Trade

Scotch Creek Addition

Old Ruby State Park

Pogue Mountain Unit

Scotch Creek Addition

Area of Interest

- Proposed Project Area
- WDFW Land To Be Traded

Major Public Land

- WDFW Managed Land
- WDFW Owned Land
- Federal Land
- WA Dept of Natural Resources
- Other State Land

Transportation Network

- US Highway
- Local Road
- Trail

Hydrography

- Lake, Wide River, or Ocean
- River or Stream

