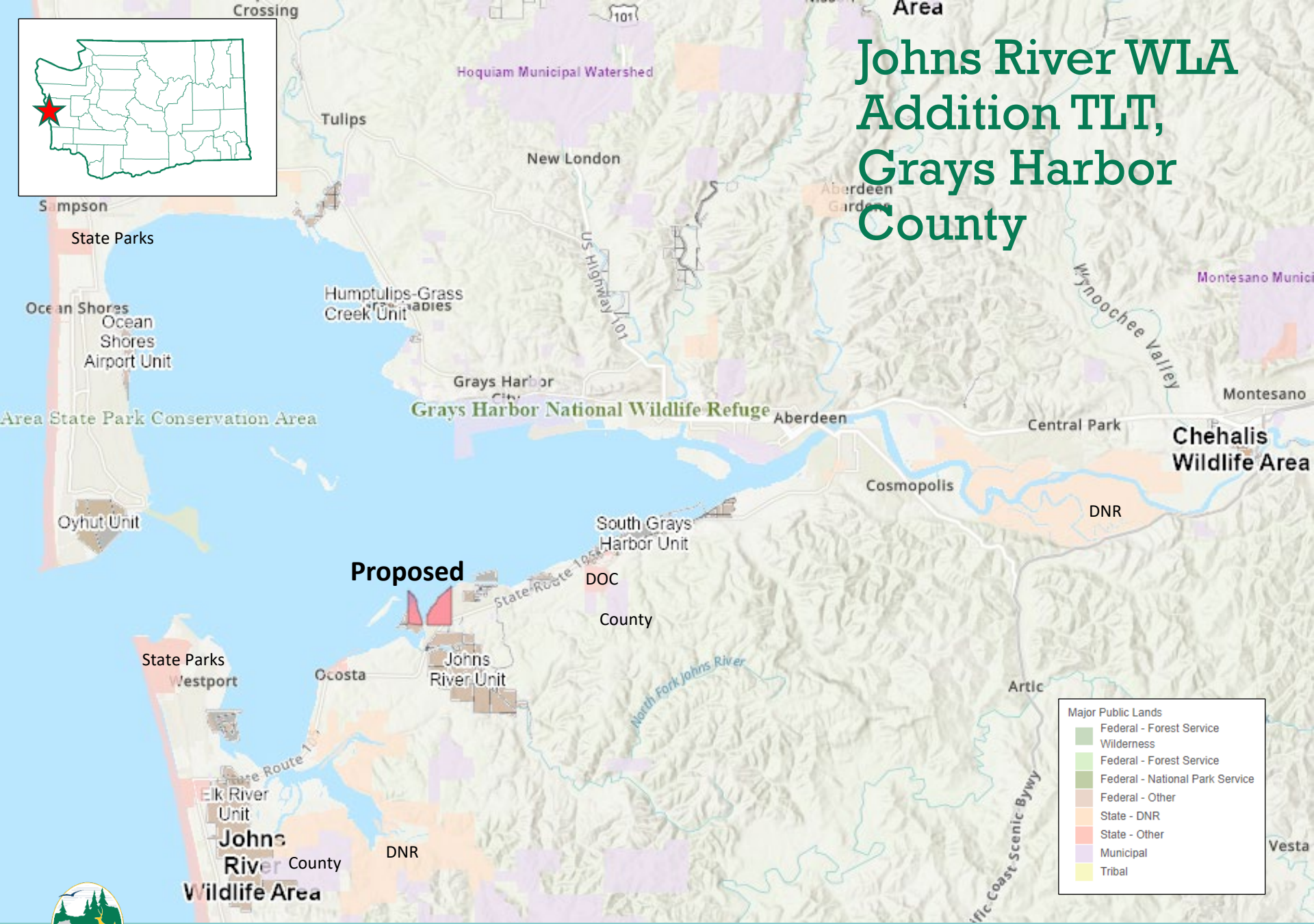
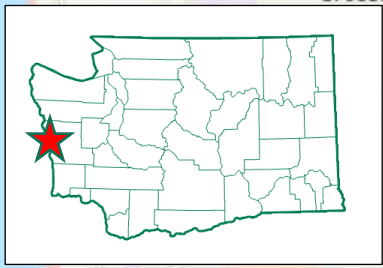
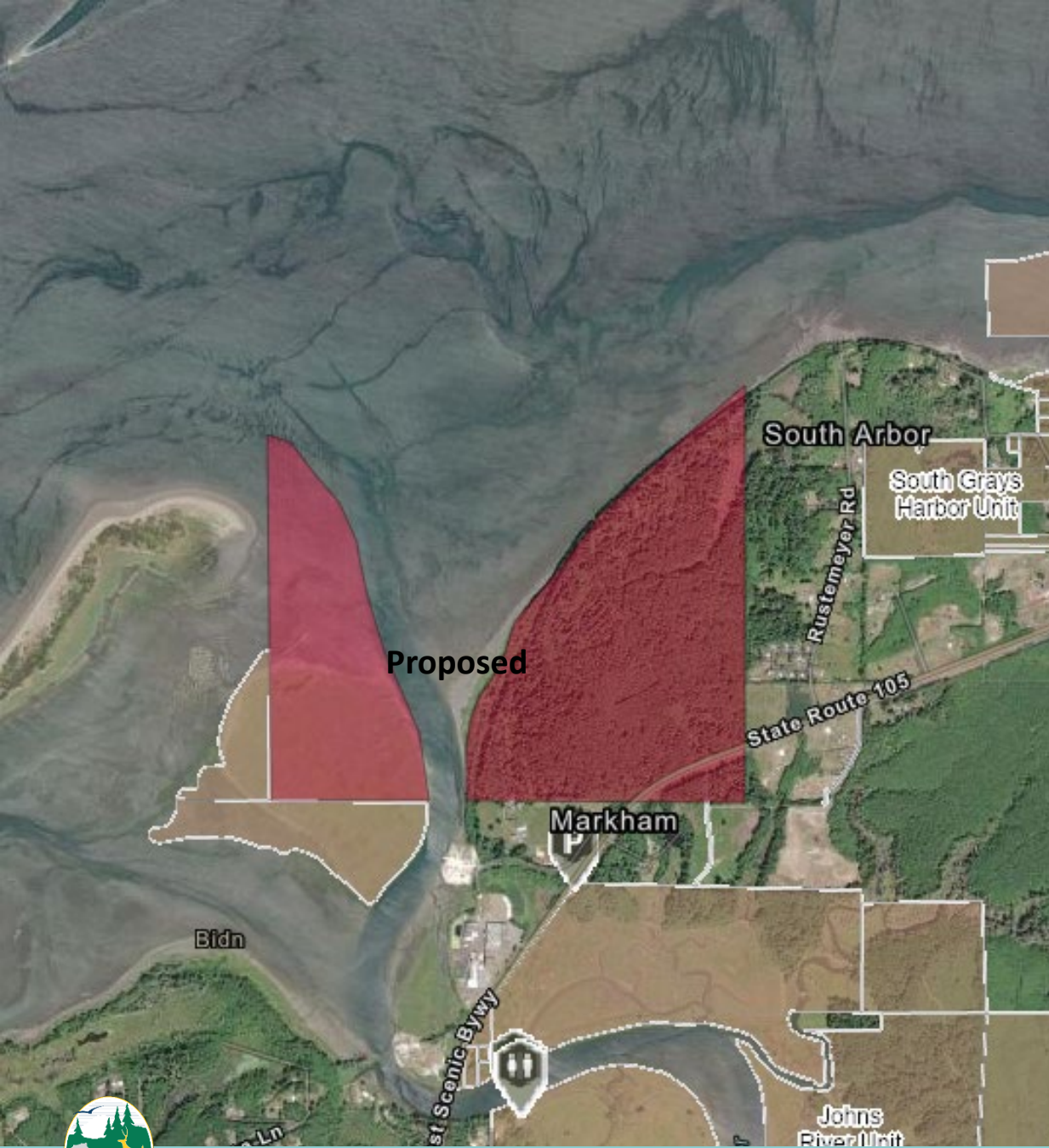


# Johns River WLA Addition TLT, Grays Harbor County



# Johns River WLA Addition TLT, Grays Harbor County

- This proposed project would acquire 235 acres adjacent to both the Grays Harbor Unit and the Johns River Unit of the Chehalis Wildlife Area.
- This property is owned by the Washington Dept. of Natural Resources and may be transferred through the [Trust Land Transfer Program](#).



# Johns River WLA Addition TLT, Grays Harbor County

- This proposal contains over two miles of Grays Harbor Bay shoreline and will help maintain Grays Harbor water quality and aquaculture and protects important bird habitat.
- Species found here include marbled murrelet, bull trout, and American green sturgeon.
- Recreational opportunities include walk-in access to tidelands, waterfowl hunting, surf fishing and birdwatching.

