

# 2024 Forest Restoration Project Approval Requests

Richard Tveten

Forest Management Team Lead, Wildlife Program



# Threshold for Commission Approval

One million board feet – About 165 truck loads





Mission

**PRESERVE, PROTECT AND PERPETUATE  
WDFW'S 200,000 ACRES OF FORESTS AS FISH  
AND WILDLIFE HABITAT, WHILE PROVIDING  
SUSTAINABLE FISH AND  
WILDLIFE RECREATIONAL AND  
COMMERCIAL OPPORTUNITIES.**

# Largest Issue: Counteracting the Effects of Prolonged Fire Suppression



Currently 3% - should be 40-70%



# Secondary Issue: Fixing Plantations



# Growing Problem: Post-Wildfire Management



# Increasing Challenge - Weed Control



# Restoration Target: Complete 100,000 acres of forest health treatments on 60,000 acres to:

- Maintain or improve ecological integrity.
- Restore priority species habitat.
- Reduce risk (wildfire, insects, and disease)

We have achieved 25% of that target (25,689 acres)

- Same area as a football field stretching from Mt. Vernon, WA to San Diego, CA.
- 9.5% of WDFW forested acres thinned but only 2.8% both thinned and burned.

Forests burning a little faster than we can treat them.



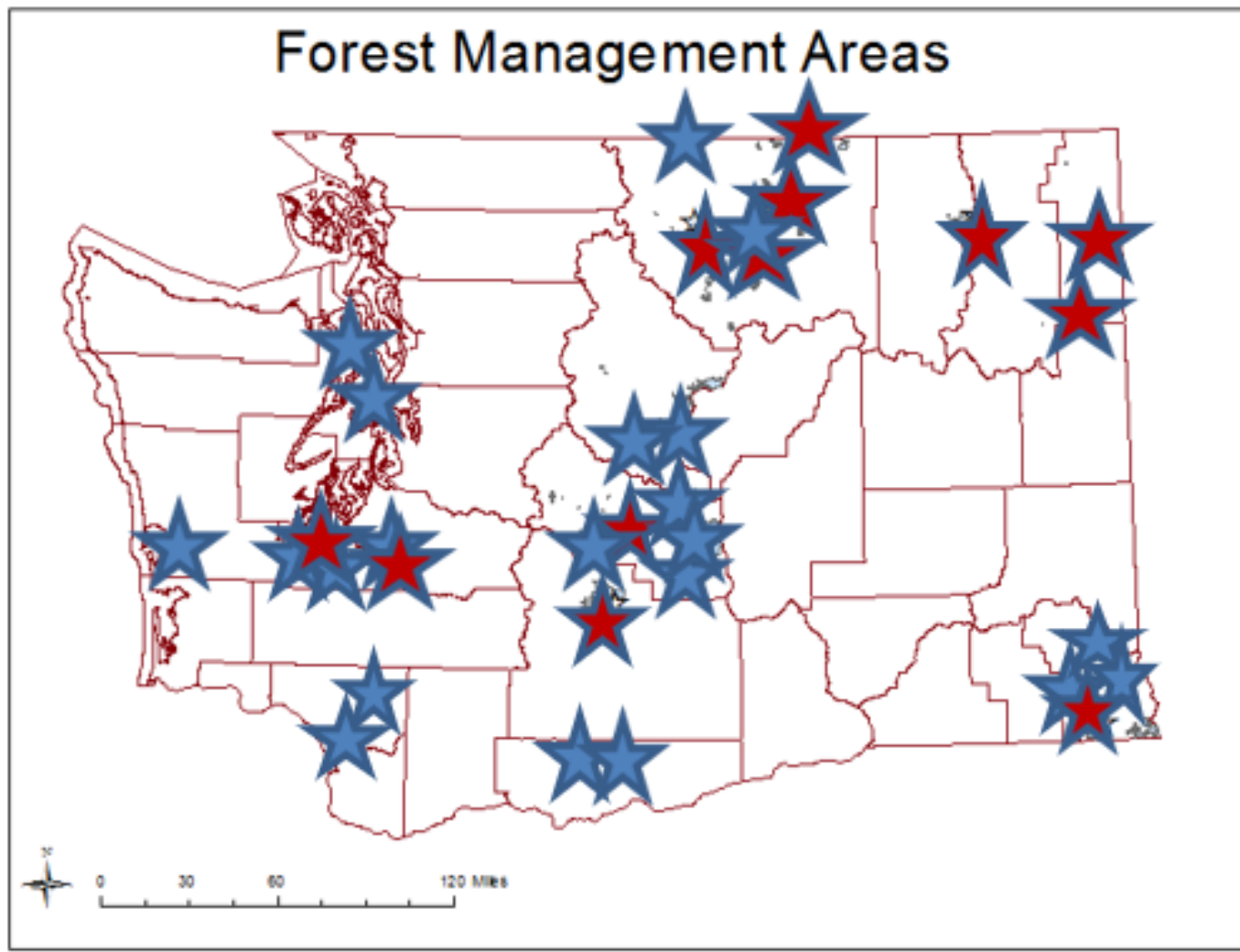


# Treatments Statewide Since 2014



Treatment Type	Acres
Commercial thinning (+ pile burning)	9,928
Pre-commercial thinning	9,127
Prescribed fire	5,912
Tree planting	419
Slash burning on new acquisitions	184
Weed control (forest threatening species)	119

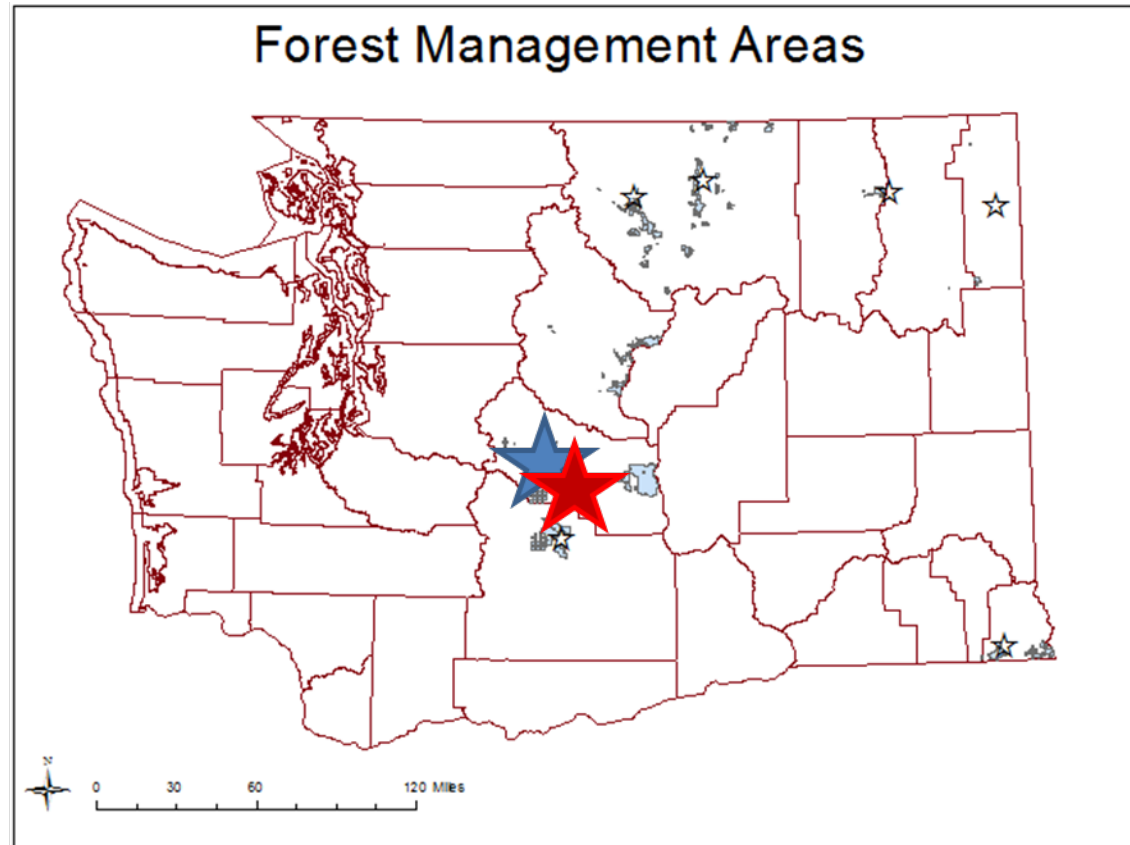


# Map of Treatments Since 2015



# Upcoming Projects 2015

-  Middle Hutchins 2
-  Observatory



# Observatory

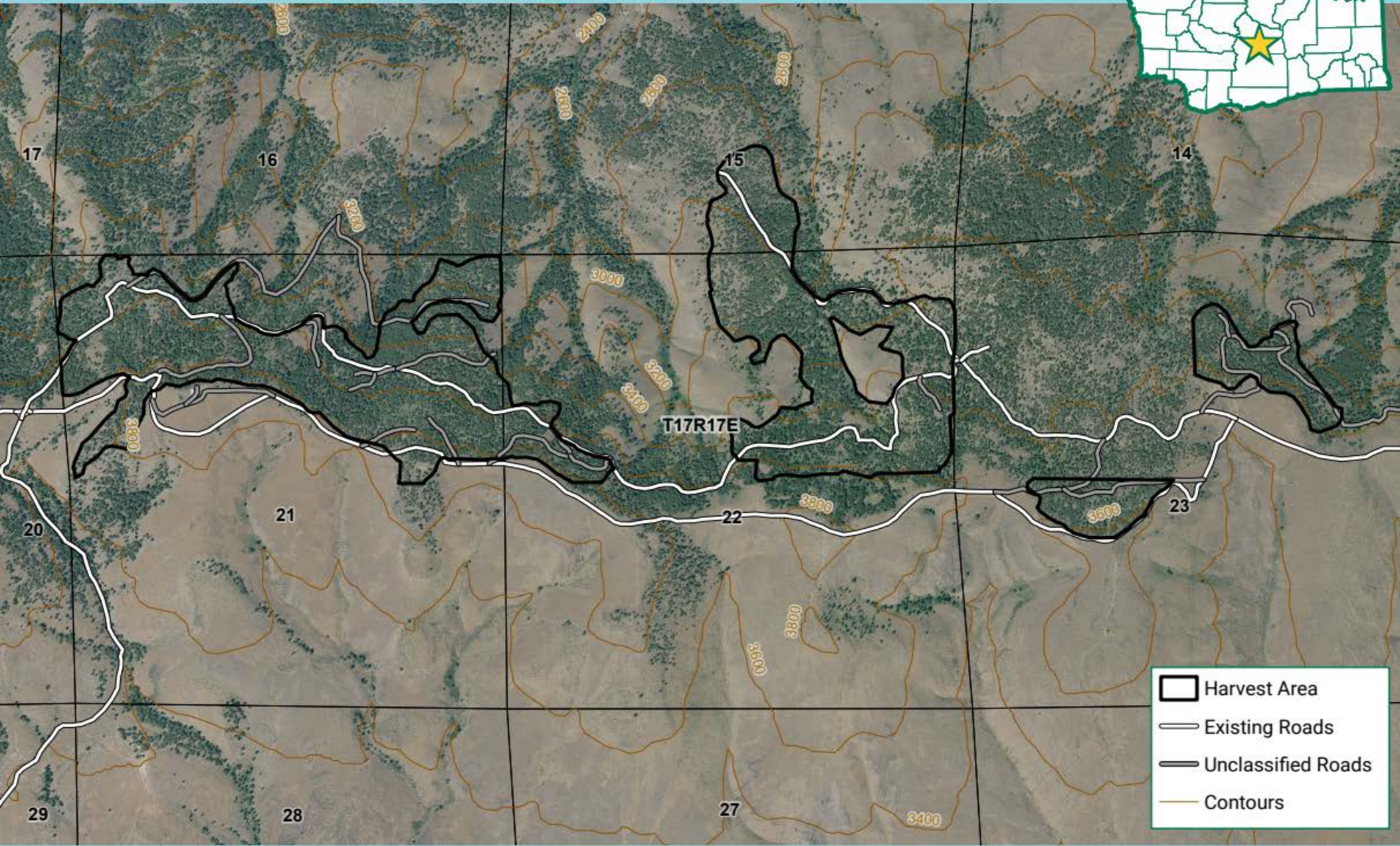
- Leave 25-35 of the best trees per acre
- Will remove about half of the standing fuels
  - A million board feet
  - 2/3 truck load per acre
  - Remove 35-75 inferior trees per acre
- Anticipated Timing: May - October
- Burn slash piles in fall
- Hope to follow up with prescribed fire
- Subsidized with forest health funds (100-300K)



# Observatory Forest Health Restoration Project Map

Wenas Wildlife Area  
Kittitas County

Commercial Restoration Thinning



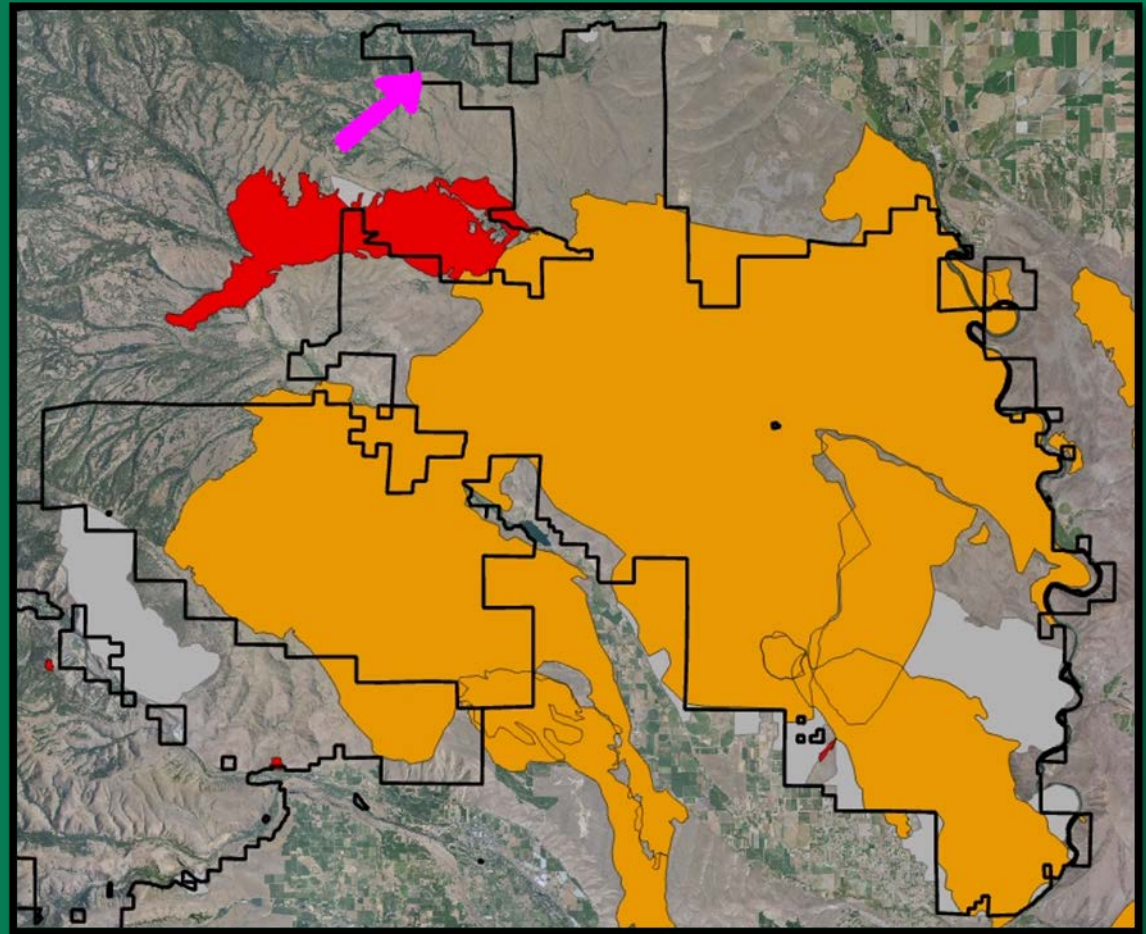
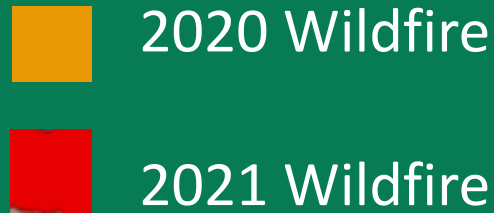
- Harvest Area
- Existing Roads
- Unclassified Roads
- Contours



Department of Fish and Wildlife



This product is for informational purposes and may not have been prepared for or be suitable for legal, engineering, or surveying purposes. It does not represent an on-the-ground survey and represents only the approximate relative location of property boundaries.



Observatory Project

**WILDFIRES BURNED MOST OF THE  
FORESTS ON THE WENAS WILDLIFE  
AREA BEFORE WE COULD THIN THEM**

# Observatory Project Reduced Due To A 2021 Wildfire.



# The Previous Wenas Project Was Also Reduced Due To Wildfire





# It's Not Too Late to Protect LT Murray Forests from Unnaturally Intense Megafires

No large wildfires since 1970

20% already thinned (Hope to reach about 30%)

- Commercial - 3,591 acres (12%)-ready for prescribed fire
- Precommercial - 2,249 acres (8%)

Prescribed fire - 237 acres

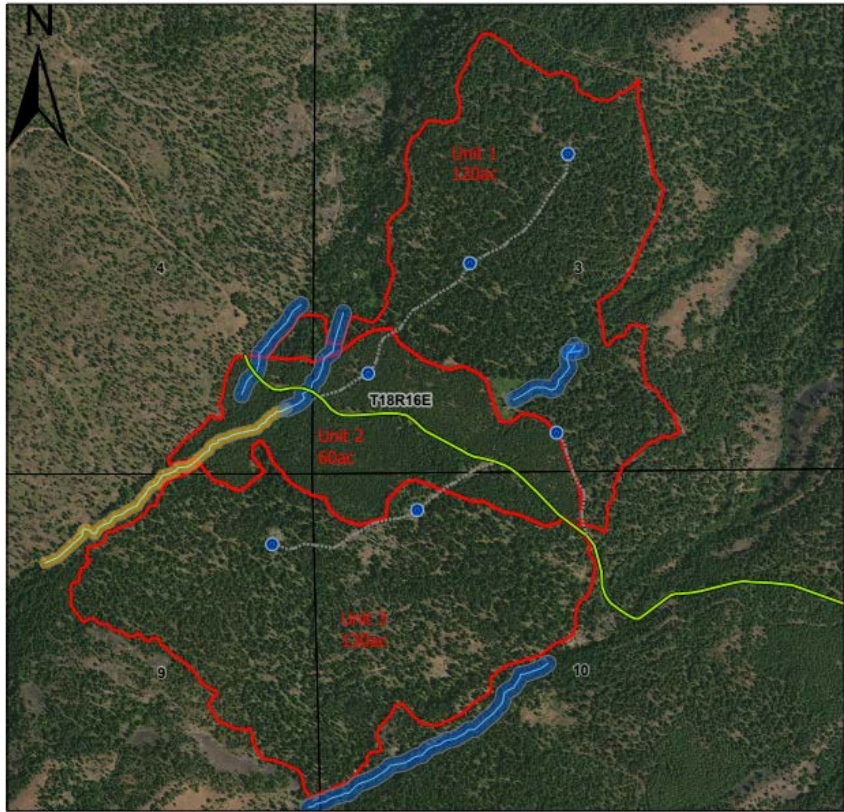


# Middle Hutchins Phase 2

- Up to 588 acres
- Includes fuel treatments along important road
- Leave 25-35 of the best trees per acre
- Will remove about half of the standing fuels
  - 2 million board feet
  - Little over 1/2 truck load per acre
- Anticipated Timing: May - October
- Burn slash piles in fall
- Hope to follow up with prescribed fire
- Projected to break even



# Middle Hutchins Phase 2



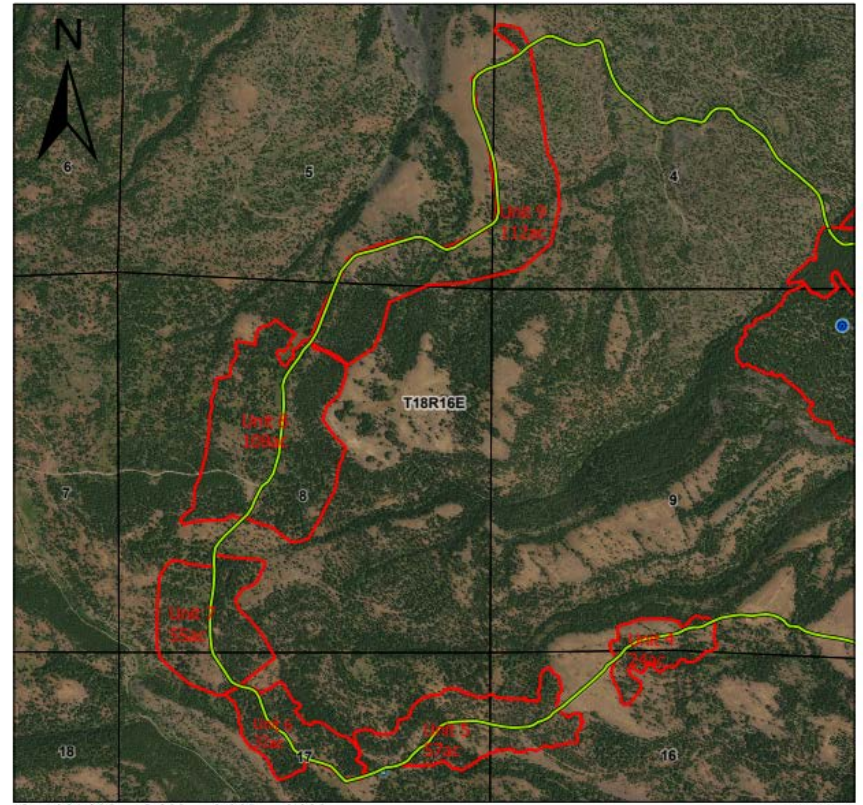
1:9,417

L.T. Murray WLA  
Kittitas County



Legend	
Project Boundary	Township Line
<b>Point Styles</b>	Section Line
Landing	<b>RGB</b>
<b>Road Types</b>	Red: Band_1
Green DOT Roads	Green: Band_2
Spur	Blue: Band_3
<b>Stream Typing</b>	NS 40' ELZ
NP	NP 60' RMZ Buffer
NP	

# MH Phase 2/Tamarack Fire Break



1:18,000

L.T. Murray WLA  
Kittitas County



Legend	
Project Boundary	Recon Area
<b>Point Styles</b>	<b>Wetlands</b>
Landing	B - 0.25 to 0.5 Acres
<b>Road Types</b>	Township Line
Green DOT Roads	Section Line
Spur	Wetlands_Buffer



# Trees Need Social Distancing Too



# Recent Nearby Project



# Questions?



**Motion Language:** I move to approve the Middle Hutchins 2 and Observatory Forest Restoration Thinning Projects as presented by staff.

