

Implementation of House Bill 1579, and Freshwater Gamefish Rule Housekeeping

Briefing and Decision

Steve Caromile, Inland Fish Program Manager
Craig Burley, Fish Program Deputy Director



AGENDA

- Public Engagement
- Gamefish Housekeeping
- Implement 2SHB 1579
- Public comments
- Responses to FWC Questions
- Proposed options
- Public comment





PUBLIC ENGAGEMENT

PUBLIC ENGAGEMENT TIMELINE

- June 13 CR-101 (Preproposal) filed
- Sept. 3 CR-102 (Proposal Rulemaking) filed
- Sept. 24 - Oct. 2 Public meetings in Mill Creek, Olympia, Ridgefield, Ephrata and Spokane Offices
- Sept. 17 – Oct. 17 Proposal posted to website for written public comment
- October 18-19 Briefing and Public Hearing
- December 13-14 Commission decision
- Rules will take effect 31 days after filing





HOUSEKEEPING RULES

HOUSEKEEPING RULES

1. Apply Beaver Ponds Rule Statewide
2. Include Kokanee in Statewide Trout Bait Rule
3. Remove Daily Limit Of Lake Trout in Lake Chelan
4. Reciprocity Rule and Trout Limit Rule for Lake Rufus Woods
5. Eastern Brook Trout removed from Trout daily limit on Patterson Lake (Okanogan)
6. Remove Trout and Cutthroat Size restrictions on Black Lake (Thurston)
7. Technical Changes:
 - Yakima River Whitefish clarification
 - Tieton River NF
 - Landlocked Salmon rules in locations with Adipose Clipped Trout Rule Clarification

COMMENTS RECEIVED ON GAMEFISH HOUSEKEEPING

2. Include Kokanee in Statewide Trout Bait Rule

Written Testimony (2 comments)

Support (1): Agreed with the change.

General (1): Would like to add
Landlocked Salmon to this rule also.



GAMEFISH HOUSEKEEPING RULES

Staff recommendation:

- Adopt proposals as presented





2SHB 1579 RULEMAKING



SECOND SUBSTITUTE HOUSE BILL 1579

- **TITLE:** “An act related to implementing recommendations of the southern resident killer whale task force related to increasing Chinook abundance.”
- **Section 2:** “The commission shall adopt rules to liberalize bag limits for bass, walleye, and channel catfish in all anadromous waters of the state in order to reduce the predation risk to salmon smolts.”



PRIOR RULE CHANGES

Removed daily limits of bass, walleye and channel catfish

- 2013 Washington /Oregon Border - Chief Joseph Dam mainstem and major tributaries
- 2016 Washington/Oregon Border – downstream to mouth mainstem and major tributaries
- 2018 expanded to include all tributaries in the Columbia River basin.



RULE CHANGE PROPOSAL PRESENTED IN OCTOBER

- This proposal removes daily limits and size limits for bass, walleye, and channel catfish in:
 - All rivers, streams and beaver ponds
 - In lakes, ponds and reservoirs where these three species inhabit the same water as salmon smolts
- 146 lakes, ponds and reservoirs identified by staff for rule change

108 - Puget Sound

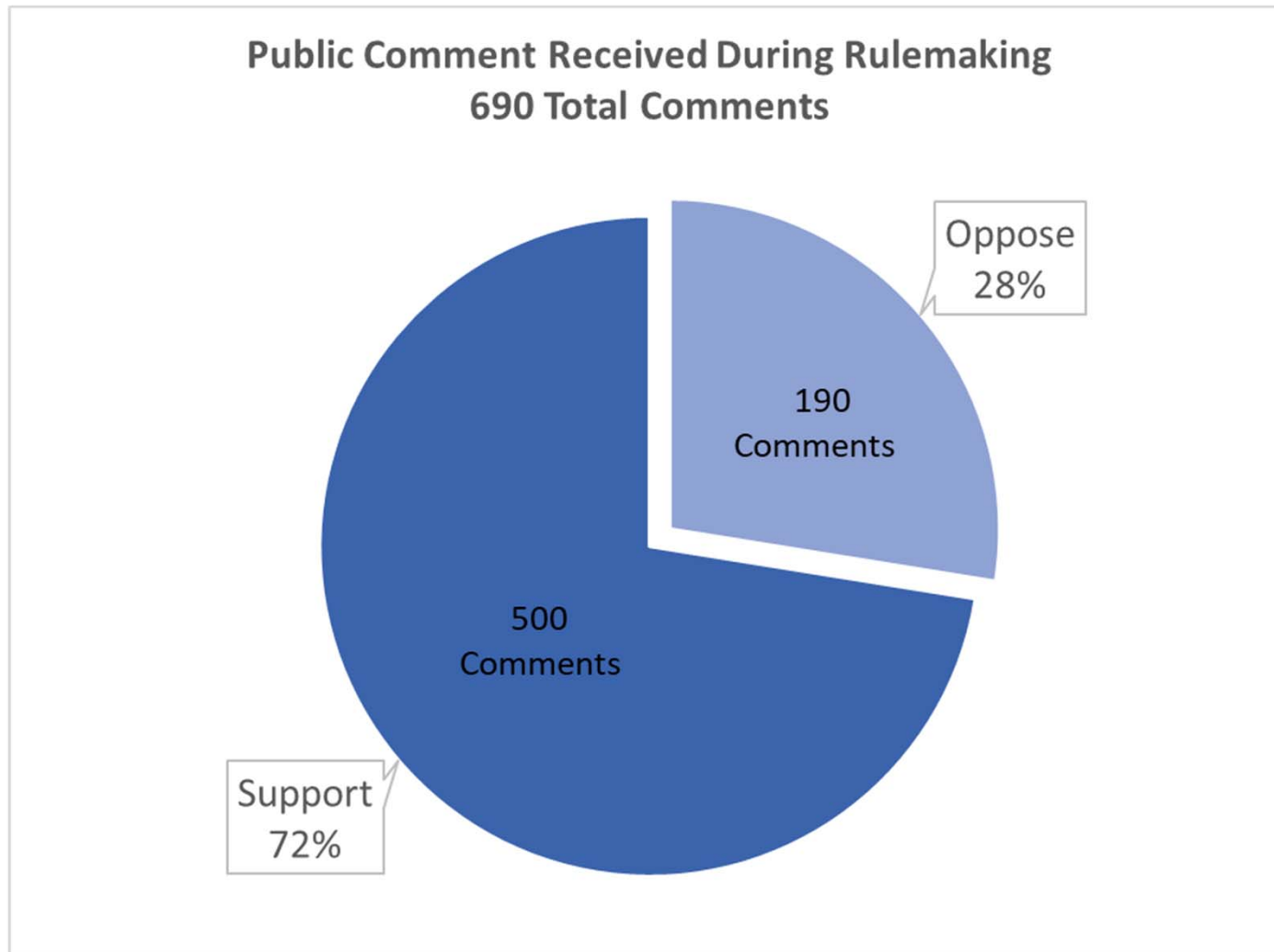
14 - Coastal

12 - Southwest

12 - Eastside



PUBLIC COMMENT RECEIVED



PUBLIC COMMENT RECEIVED

Support (500):

- Non-native fish contribute to loss of salmon
- Remove all limits to aid in recovery of listed/endangered species
- Protect native fish and wildlife, more important than non-native predators



INPUT FROM PUBLIC PROCESS

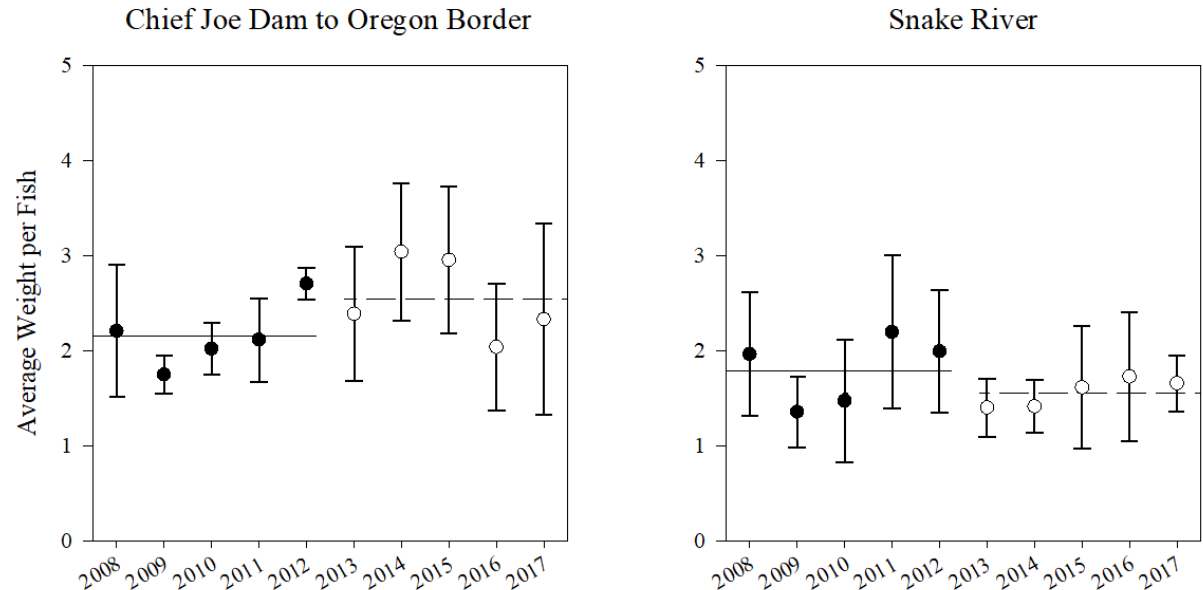
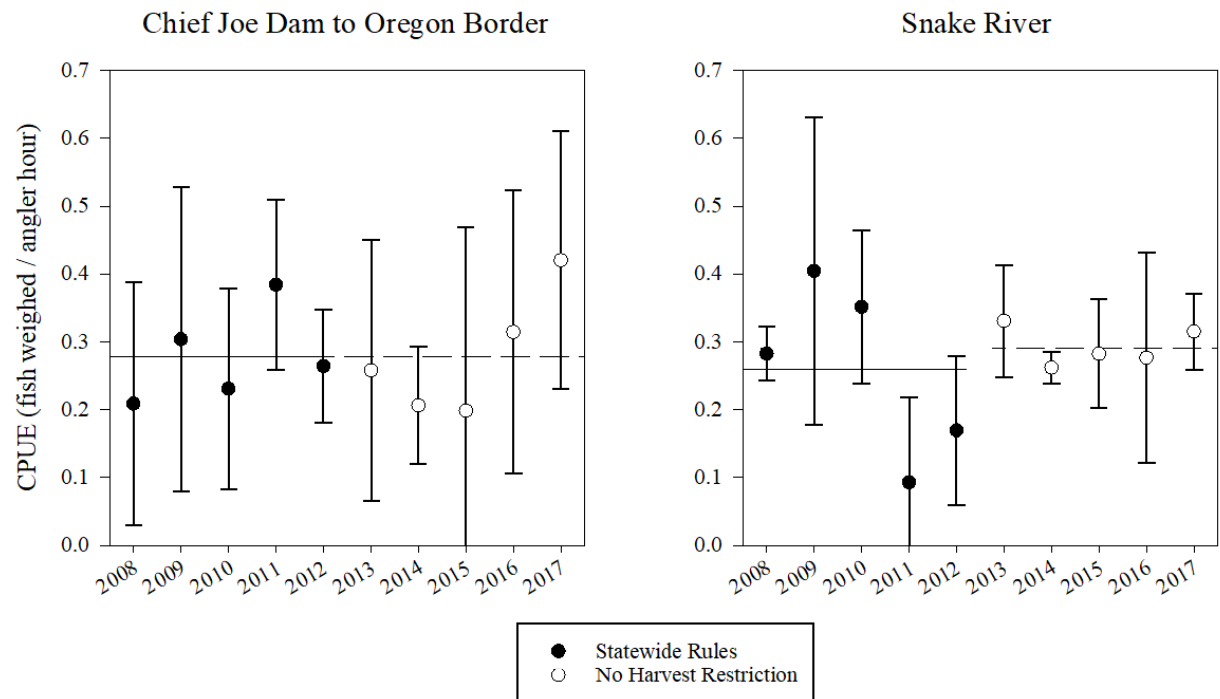
Oppose (190):

- Question why focus on all salmon and not just Chinook
- Why eliminate limits and not just increase them
- Think this will not increase salmon abundance
- May increase populations of other predator species
- What is the science to support this (no science, limited science)
- These are economically valuable fisheries that you are destroying
- Should focus on seals & sea lions, bird predation, they are bigger issue
- Remove nets, curtail salmon fishing
- Protect some larger fish, remove fish in the middle (Slot limit)
- Increase/double bag limits, keep 1 or 2 over a max size
- Be more surgical/pragmatic in choosing lakes
- Re-examine the list and remove lakes without salmon/Chinook
- Remove all lakes smaller than 4,200 acres from the list
- Liberalization is a gray term, doesn't have to mean eliminate
- Will there be data collection on how this is working, and will there be any feedback

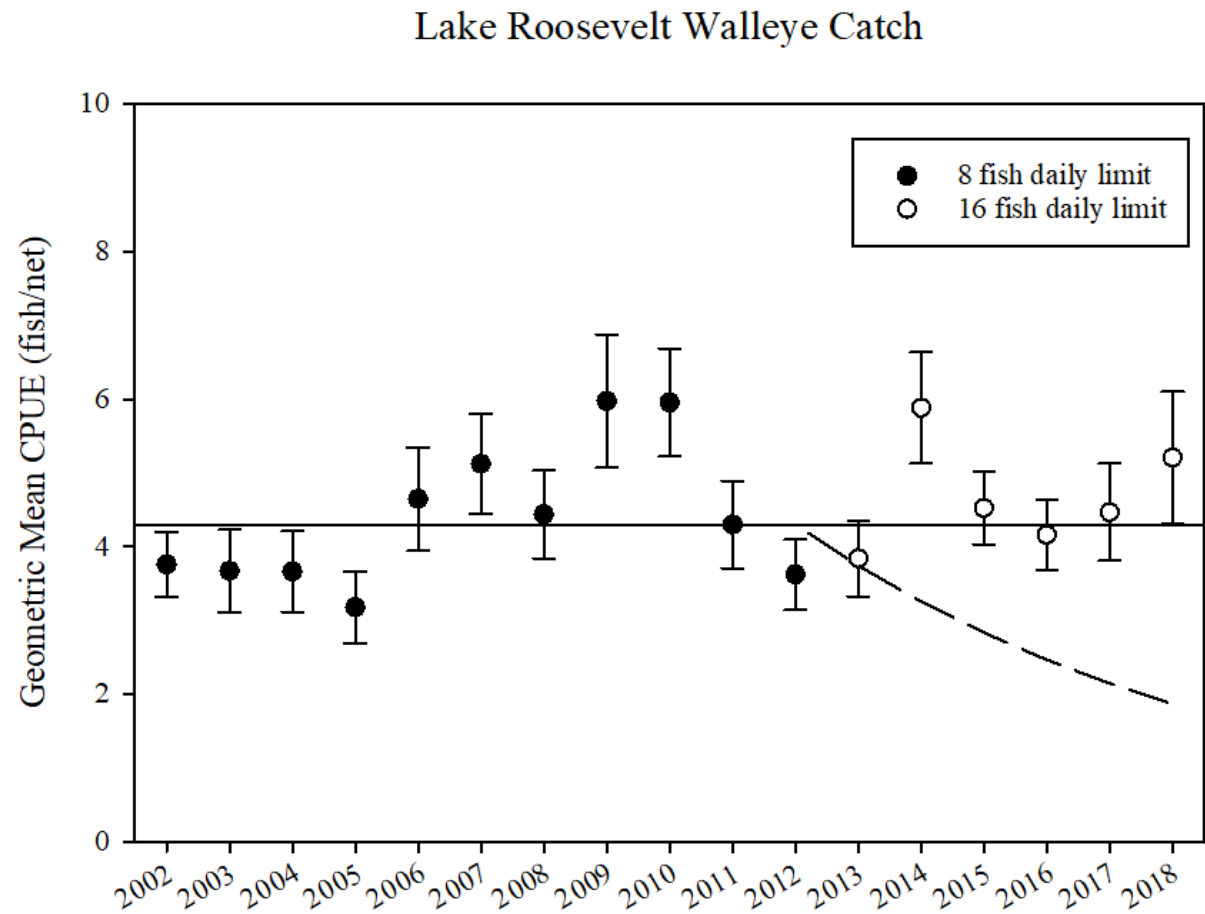


Is there a difference in catch before and after removal of harvest restrictions in the Columbia River?

- Tournament data
- In large water bodies, no statistical difference in catch or weight pre vs. post regulation change



How has regulation changes affected Walleye in FDR?



- Current fishing power is not enough to decrease population.
- No statistical change in population size over time.



RULE CHANGE OPTIONS

*More conservative, Broad approach

	Option 1	Option 2
Option A	<ul style="list-style-type: none"> <u>Rivers</u>: Remove size limits and daily limits. <u>146 Lakes</u>: Remove size limits and daily limits. 	<ul style="list-style-type: none"> <u>Rivers</u>: Remove size limits and daily limits. <u>146 Lakes</u>: Maintain size limits with increased daily limits.
Option B	<ul style="list-style-type: none"> <u>Rivers</u>: Remove size limits and daily limits. <u>77 Lakes</u>: Remove size limits and daily limits. 	<ul style="list-style-type: none"> <u>Rivers</u>: Remove size limits and daily limits. <u>77 Lakes</u>: Maintain size limits with increased daily limits.
Option C	<ul style="list-style-type: none"> <u>Rivers</u>: Remove size limits and daily limits. <u>14 Lakes</u>: Remove size limits and daily limits. 	<ul style="list-style-type: none"> <u>Rivers</u>: Remove size limits and daily limits. <u>14 Lakes</u>: Maintain size limits with increased daily limits.

*More focused, less conservative



Rivers, Streams and Beaver Pond Options

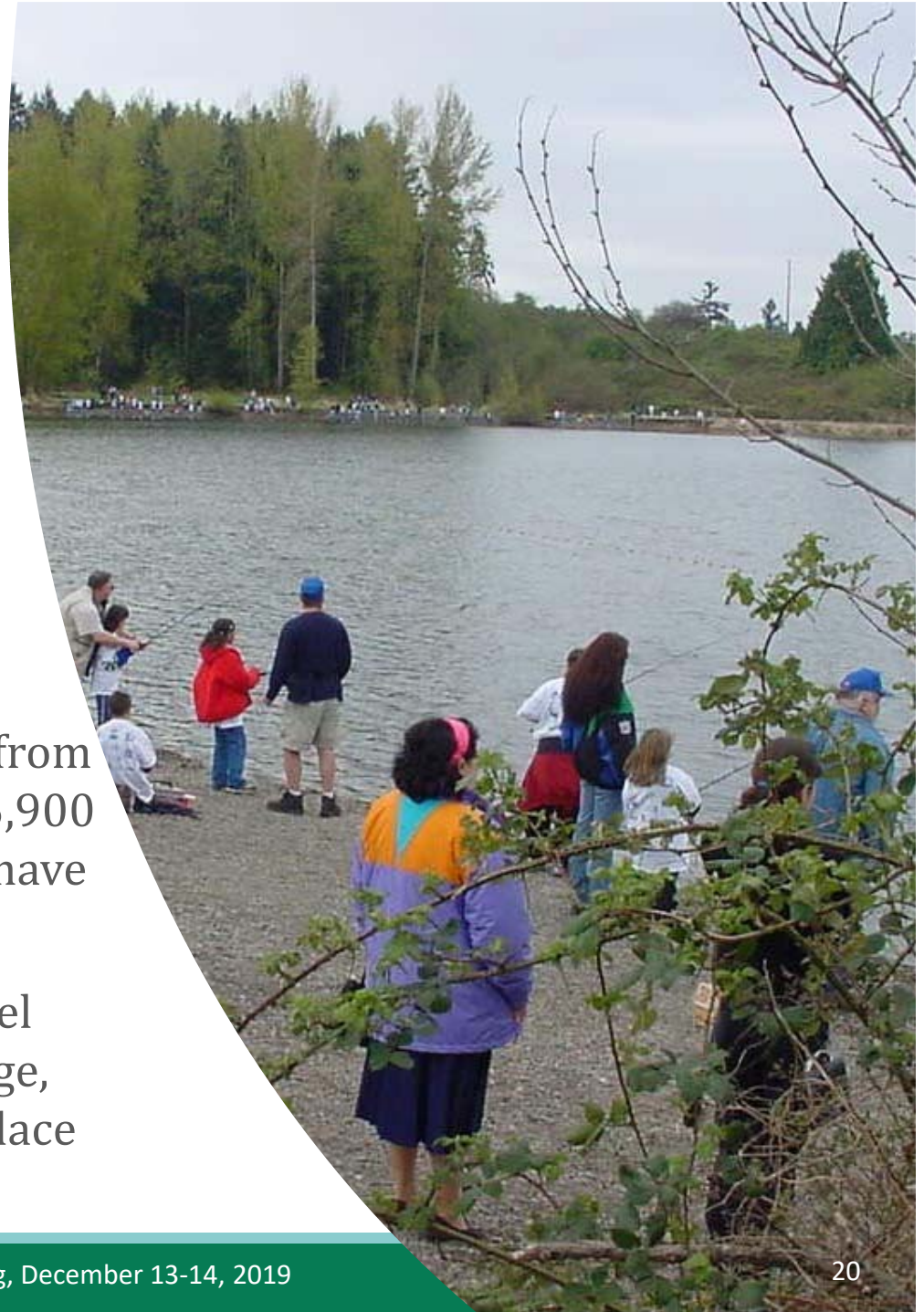
For all options:
Remove size
restrictions and
daily limits.



PROPOSED LAKE OPTIONS

Option A:

- 146 lakes total
- Presented to the Commission in October
- Determined by spatial (GIS) data, from a statewide list of approximately 5,900 lowland lakes, as being lakes that have salmon spawning above them
- May have bass, Walleye, or Channel Catfish. Reservoirs without passage, but with rebuilding programs in place



PROPOSED LAKE OPTIONS

Option B:

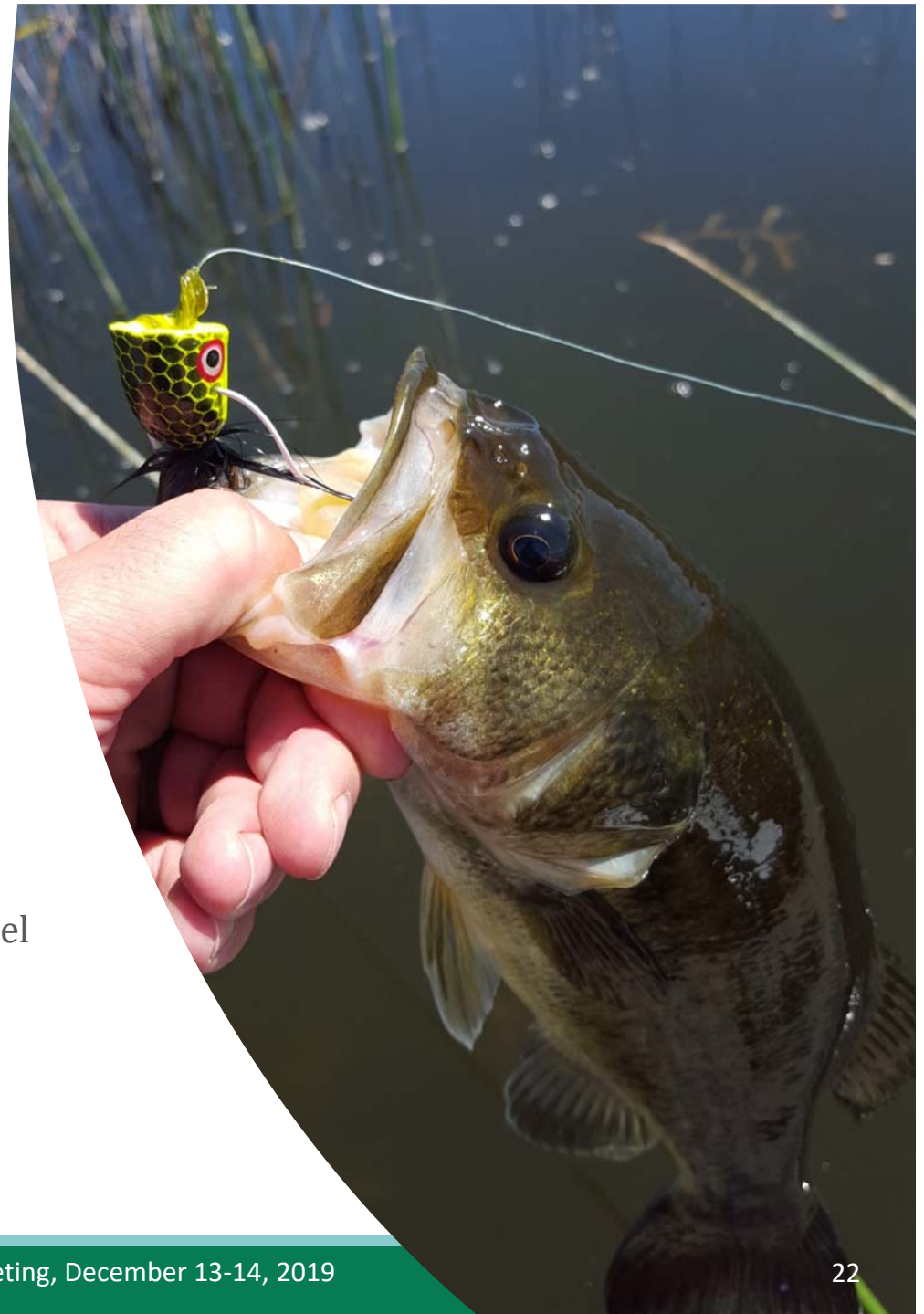
- 77 lakes total
- Refined from option A
- Salmon spawning above the lakes
- Lakes were removed that:
 - do not contain bass, Walleye, or Channel Catfish
 - have no public access



PROPOSED LAKE OPTIONS

Option C:

- 14 lakes total
- Refined from option A
- Chinook salmon spawning above the lakes
- Lakes were removed that:
 - do not contain bass, Walleye, or Channel Catfish
 - have no public access



PROPOSED DAILY / SIZE LIMIT OPTIONS – LAKES AND RESERVOIRS

Option 1: Presented to the commission in October. Remove size limits and daily limits and for bass, Walleye and Channel Catfish.

Option 2: Keep current size limits and increase daily limits:

- LMB: from 5 to a 10 fish daily limit, 12-17” protective slot, only one may be over 17”.
- SMB: from 10 to a 15 fish daily limit, only 1 over 14”.
- CC: No minimum size. From a 5 to a 10 fish daily limit.
- WAL: from 8 to a 16 fish daily limit, only 1 over 22”.



Staff Recommendation

Option B:

- All rivers streams and beaver ponds
 - no minimum size, no daily limit
- 77 lakes total
- Refined from option A
- Salmon spawning above the lakes
- Lakes were removed that:
 - do not contain bass, Walleye, or Channel Catfish
 - have no public access



Questions?



Public Comment



Decision

FWC Meeting, December 13-14, 2019