

PROPOSED LAND TRANSACTIONS

TABLE OF CONTENTS December 13th, 2019

Decision Page.....		i
Proposed Acquisition	Snyder Bar/Cassidy Donation Property Asotin County	
Location Map		1a
Local Map		1b

Summary Sheet

Meeting dates: December 13 -14, 2019 Commission Meeting
Agenda item: Proposed Land Transaction
Presenter(s): Eric Gardner, Wildlife Program Director

Background summary:

Item 1: Snyder Bar/Cassidy Donation – Chief Joseph Wildlife Area, Snyder Bar Access Area
This proposal is to acquire by donation, 1.8 (+/-) acres in Asotin County from Frank (Larry) and Marion Cassidy, to be added to the Snyder Bar Water Access Area.

The property is valued at \$32,000 and the acquisition costs are being provided by the Fish Program. The property has a primitive boat launch and is used for fishing and recreational activities. The property will provide continuity to the Snyder Bar Access Area with all the property south of Schumacher Road in this area now available for public access.

Staff Recommendation:

Staff recommend approval of this transaction.

Policy issue(s) and expected outcome:

Providing public recreational opportunities.

Fiscal impacts of agency implementation:

This small property will be incorporated into an existing larger Water Access Area.

Public involvement process used and what you learned:

This project was approved through the agency's Lands 20/20 Process.

Action requested and/or proposed next steps:

Approval of the Land Transaction as presented

Draft motion language:

Motion: I move to approve the transaction as presented by staff.

Is there a "second"?

If so, then motion maker discusses basis for motion; other Commissioners discuss views on motion; amendments, if any, proposed and addressed

Post decision communications plan:

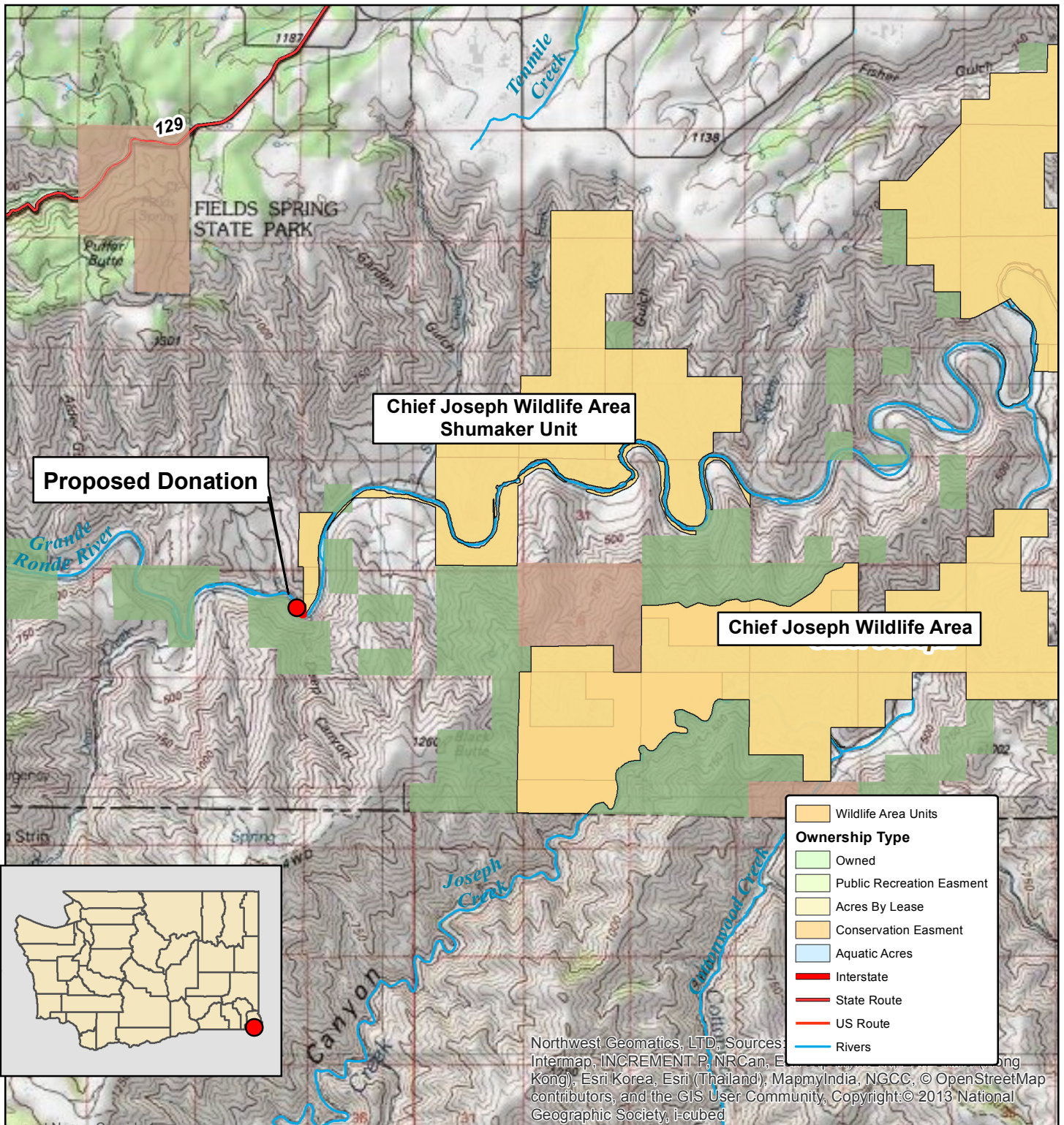
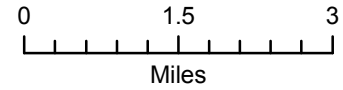
WDFW will distribute a press release informing the public of this action.

ITEM 1: PROPOSED DONATION SNYDER BAR/CASSIDY

COUNTY: ASOTIN

LEGAL: SECTION 3, TOWNSHIP 6N, RANGE 45E, W.M.

ACRES: 1.8 (+/-)



Northwest Geomatics, LTD., Sources: Intermap, INCREMENT P, NRCAN, Esri (Korea), Esri (Thailand), MapmyIndia, NGCC, © OpenStreetMap contributors, and the GIS User Community, Copyright © 2013 National Geographic Society, I-cubed

ITEM 1: PROPOSED DONATION SNYDER BAR/CASSIDY

COUNTY: ASOTIN

LEGAL: SECTION 3, TOWNSHIP 6N, RANGE 45E, W.M.

ACRES: 1.8 (+/-)

