

Willapa Bay Salmon Management Policy (C-3622)

Ron Warren
Director of Fish Policy

Marlene Wagner
South Coast Policy
Lead

Chad Herring
Anadromous Resource
Policy Analyst



Presentation Outline

- Background and Proposed Timeline
- Interim Guidance for 2021 Fishery Planning
- Questions





Background and Proposed Timeline

Policy C-3622 Background

Intent

- Provide general guidance and management objectives for salmon management in Willapa Bay

Policy Timeframe

- Adopted in June 2015 and expires in 2023
- Comprehensive review after Phase One (years 2015-2018)

Comprehensive Review

- Review document submitted in Sept. 2020
- Accepted as final in Dec. 2020 with FWC revisions
- <https://wdfw.wa.gov/about/commission/willapa-bay-policy-review>
- Interim guidance in 2018, 2019, and 2020

Next Steps

- Propose timeline for Policy revisions
 - Revisions based on staff recommendations
- Interim guidance for 2021



Proposed Timeline

Date	To Do
January 28-30	Present to the commission a timeline for adoption of Willapa Bay Policy revisions. Ask for interim guidance to be considered in February for 2021 fisheries planning. --Check in with Fish Committee
February 25-27	Goals are 2-fold: 1) Receive commission interim guidance for 2021 North of Falcon, and 2) Provide briefing on implementation and performance of Willapa Bay salmon management policy for the 2020-21 season. --Check in with Fish Committee
March (TBD)	Discussion with Fish Committee about progress and receive feedback.
April (TBD)	Discussion with Fish Committee about progress and receive feedback.
June 24-26	Brief the commission on draft policy revisions and analyses based on staff recommendations. Public Testimony. -Check in with Fish Committee



Proposed Timeline

Date	To Do
July (TBD)	Conduct public meetings to collect public input on draft policy revisions and analyses.
August 5-7	Brief the commission on public comments related to draft policy revisions. Consider final draft recommendations. Public Testimony. --Check in with Fish Committee
August/September (TBD)	Conduct public meetings to collect input on final draft policy decisions.
September 16-18	Meet the commission with final decision for adoption of policy changes. --Check in with Fish Committee
October 21-23	Meet the commission with final decision for adoption of policy changes. --Check in with Fish Committee



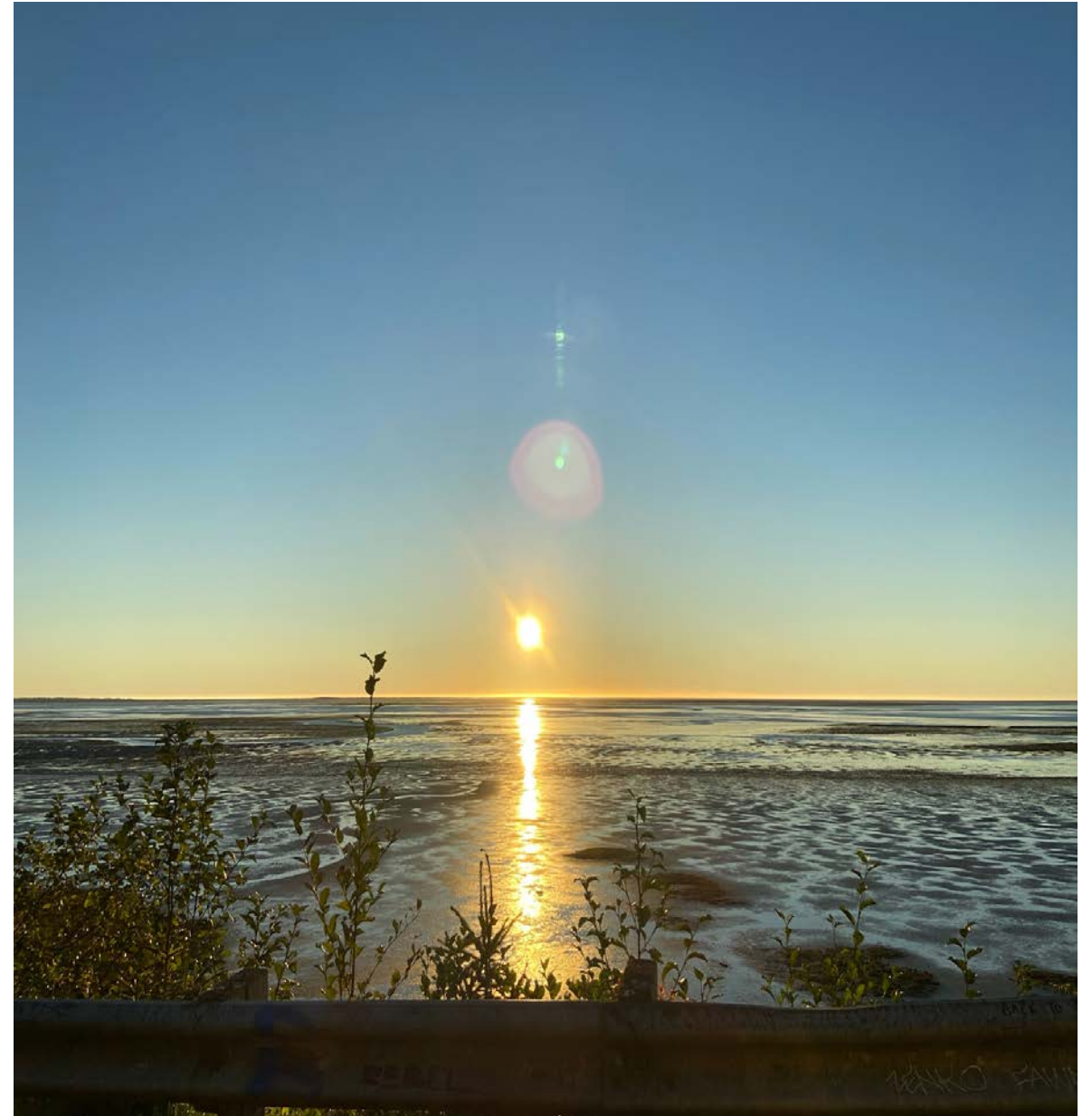


Interim Guidance for 2021 Fishery Planning

Interim Guidance

2018

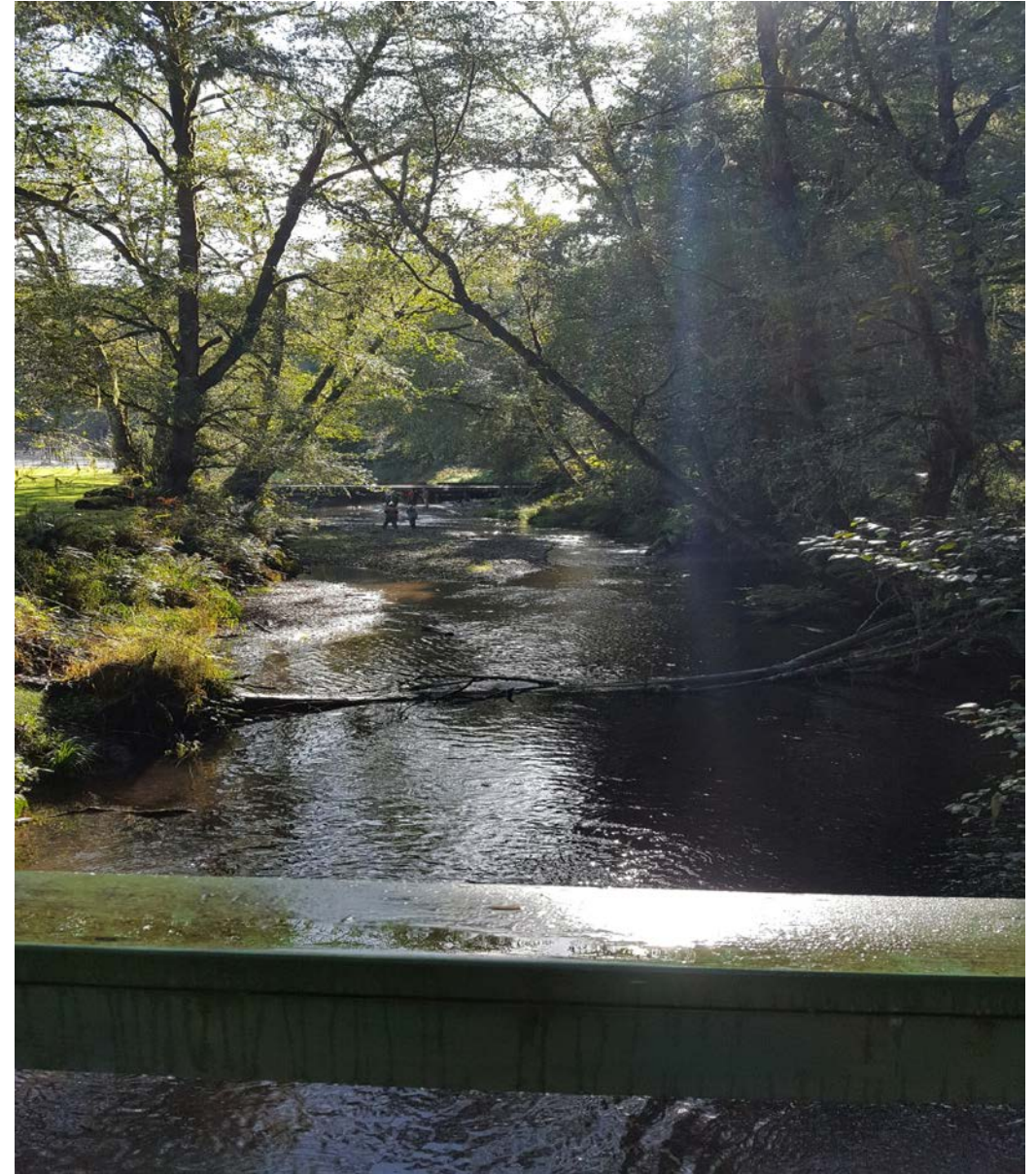
- Concerns
 - Increased recreational harvest rate
 - Limited remaining impacts for commercial fisheries
- Guidance
 - Actively manage for a 20% impact rate cap
 - » Commercial fishery allocation of 9%
 - Active monitoring of bay fishery prior to Sept. 30
 - Explore reductions to recreational bag limits and curtail high catch periods to meet objectives



Interim Guidance

2019

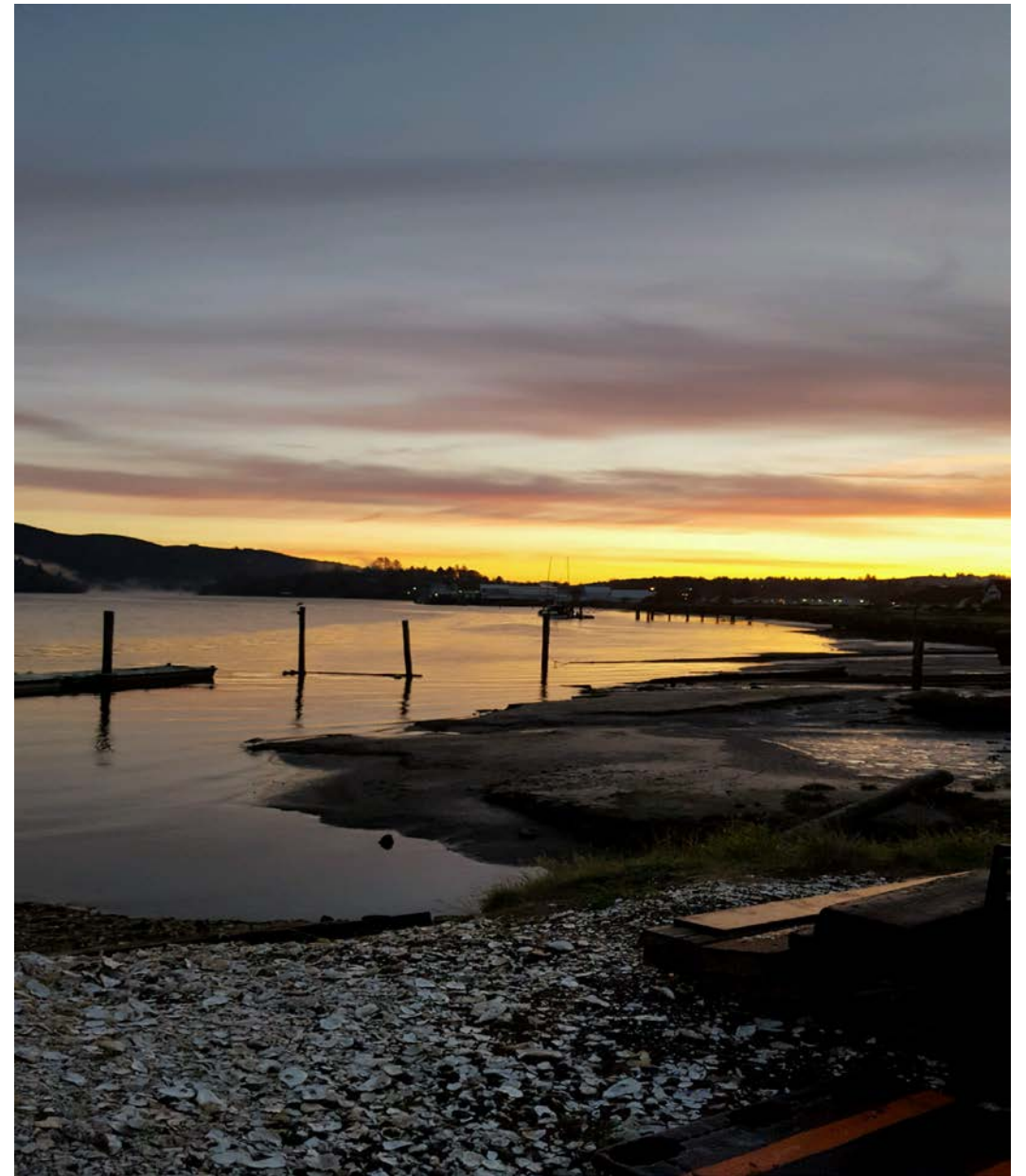
- Concerns
 - Increased recreational harvest rate
 - No remaining impacts for commercial fisheries
- Guidance
 - Actively manage for a 20% impact rate cap
 - Suspension of time and area restrictions for commercial fisheries
 - Flexibility for staff to determine bag limits for recreational fisheries



Interim Guidance

2020

- Concerns
 - Low forecasted abundance of natural coho
- Guidance
 - Carry forward the 2019 interim guidance
 - » Except for reducing the 20% harvest rate cap to 14%



Interim Guidance

Issues

- Hatchery management
 - Population designations for Chinook
 - Hatchery production levels
- Fishery management
 - Rebuilding timeframe
 - Species harvest prioritization
 - » Interim guidance

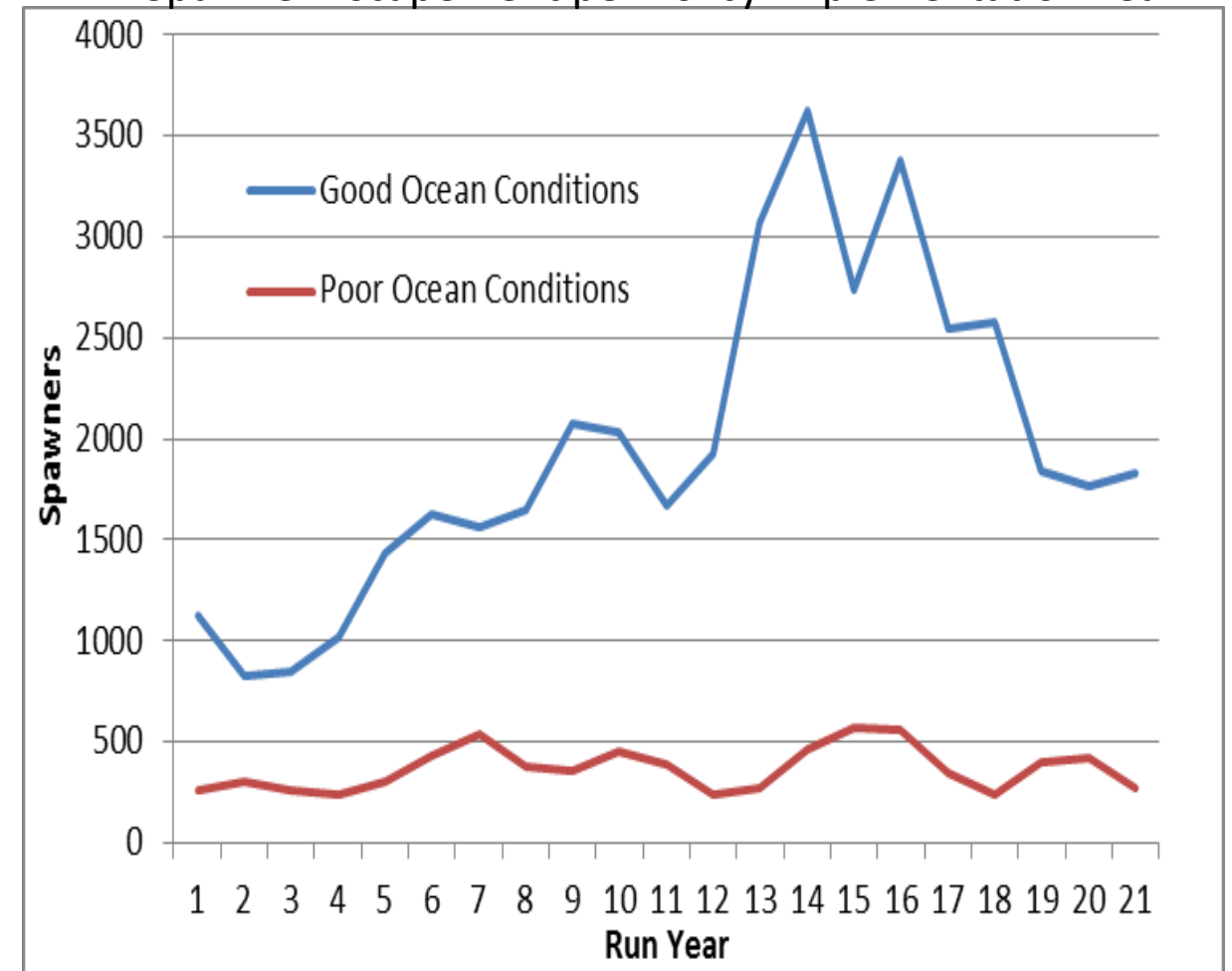


Fisheries Management

Rebuilding Timeframe

- Policy actions intended to meet management objectives in 16-21 years
- Developed from public feedback
- AHA model used in development of harvest control rules
 - 20% Phase One (years 2015 – 2018)
 - 14% Phase Two (begins in 2019)
 - 100 years out – 25 generations
 - Cannot predict environmental conditions
 - No new informative data
 - Better understanding of river specific harvest/impact rates
 - Adaptive management necessary given uncertainty

Estimates of Naselle River Fall Chinook Natural Origin Spawner Escapement per Policy Implementation Year



Fisheries Management

Species Harvest Prioritization

- Chinook for recreational sector; coho and chum for commercial sector
 - Only allows for harvest if impacts remain
 - Mixed stock fisheries
 - Area and time restrictions for commercial fisheries
 - Very little access to Chinook
 - Coho run sizes highly variable
 - Development of fishery management tools
 - » Runsize update model for Chinook based on CPUE in commercial fisheries





Questions