

Lands 20/20 Briefing

Cynthia Wilkerson

Lands Division Manager, Wildlife Program

Lisa Coffman, Lands 20/20 Coordinator, Wildlife Program





**LANDS 20/20 - A CLEAR VISION FOR
THE FUTURE**

WDFW Lands

Protecting Land and Water for Wildlife and People



Our vision is a Washington where fish and wildlife thrive in healthy habitats, and where people experience and enjoy our state's natural gifts for generations to come.



WDFW Lands

Protecting Land and Water for Wildlife and People



- Provide access for fishing, hunting, and other wildlife related recreation
- Foster experiences and exploration
- Preserve natural and cultural heritage



Why Does WDFW Buy Land?

Protecting Land and Water for Wildlife and People

- Conserve and restore the diversity of Washington's fish and wildlife species and habitats
- Enhance sustainable fishing, hunting and other wildlife-related outdoor opportunities
- Improve management of current WDFW Lands
- Preserve working lands for agriculture, forestry, and other sectors of the outdoor economy, particularly in rural areas



Questions WDFW Asks

Protecting Land and Water for Wildlife and People

- Willing seller
- Partnerships
- Best Conservation Alternatives?
- Conservation easements?
- Long-term opportunities and ecological values
- Larger, contiguous habitats
- Ecological and social importance



Acquisition Steps:

Scoping
and Need

Lands 20/20

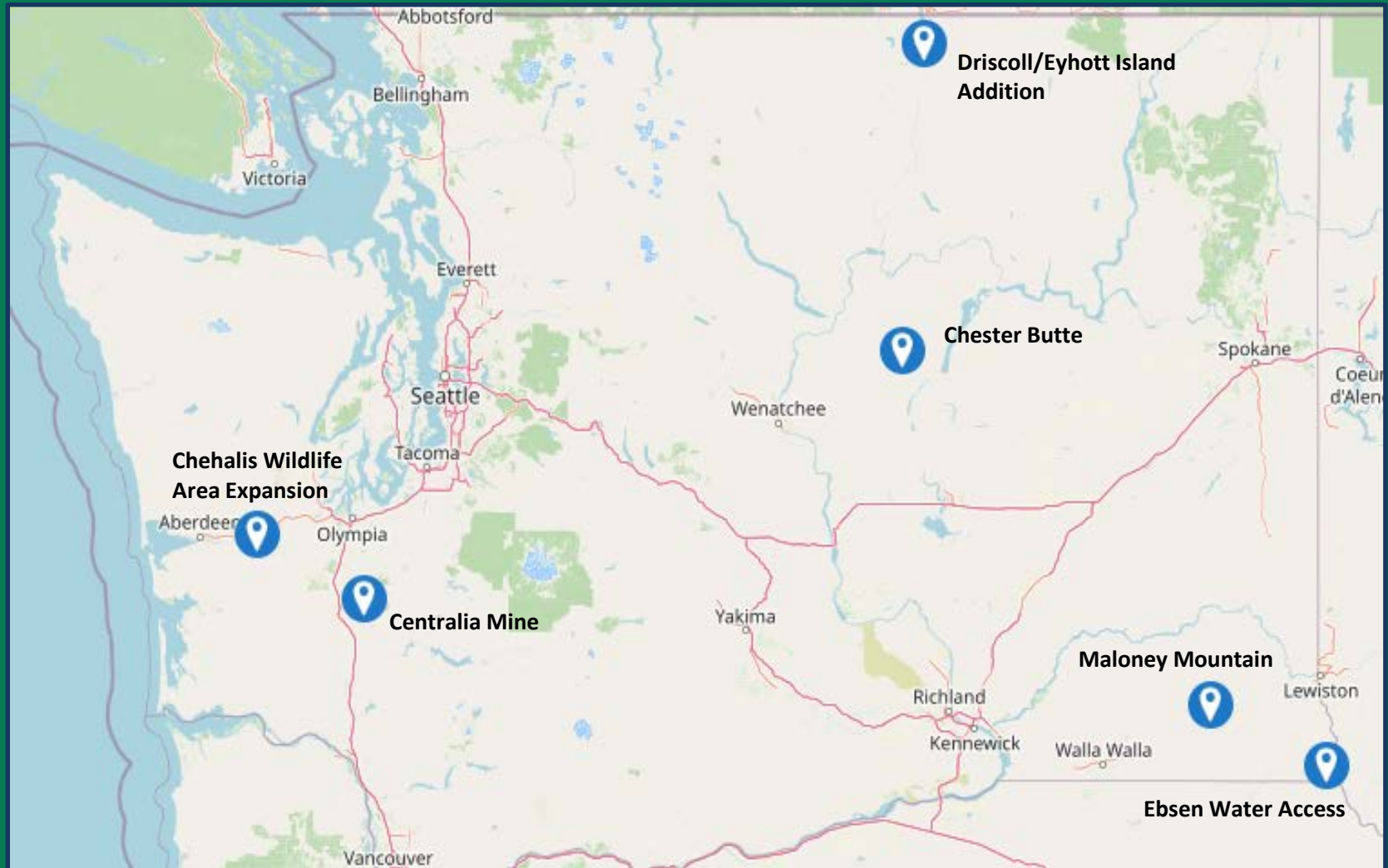
Funding

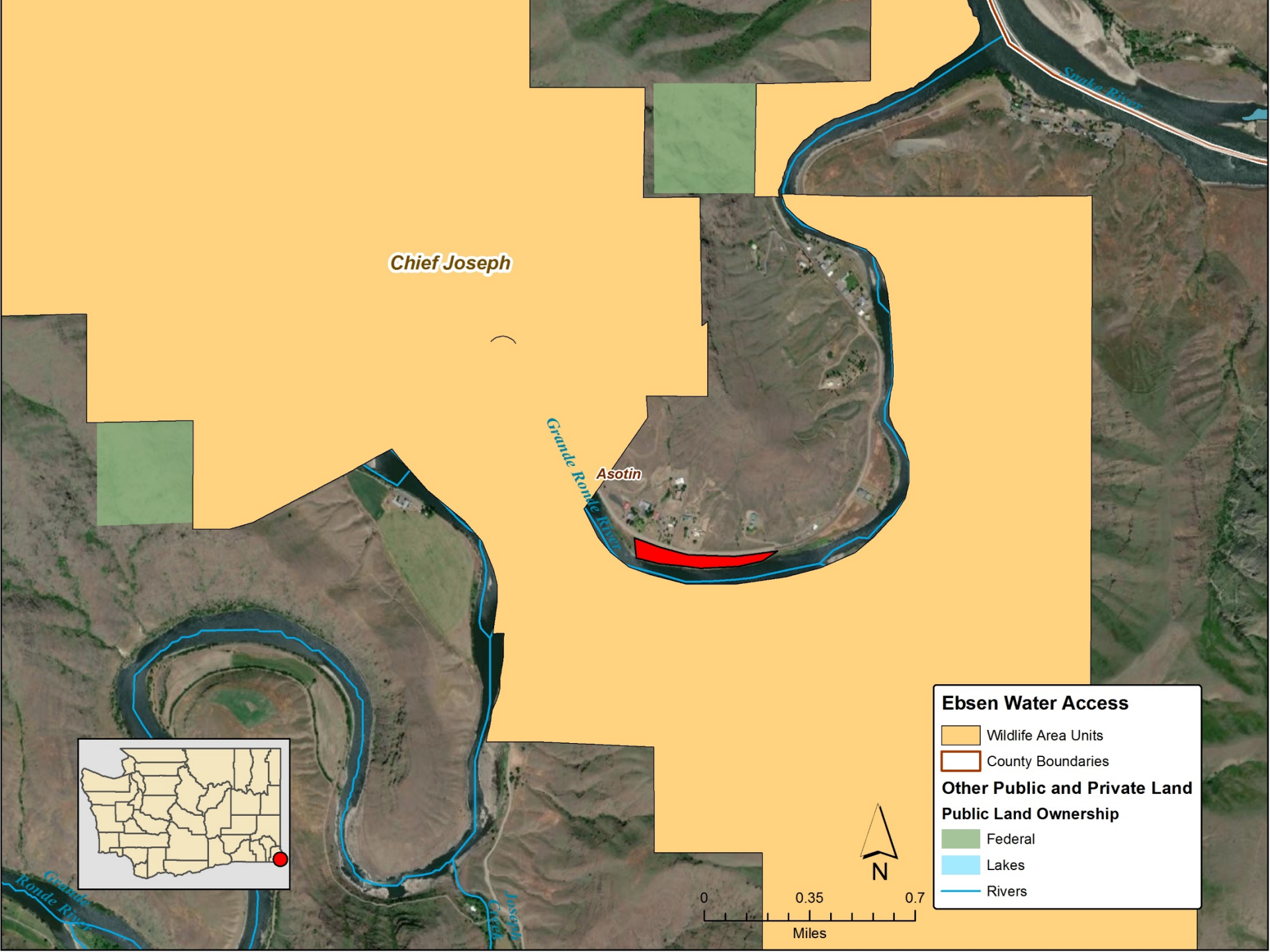
Land Transaction

Integrating
Ownership



WDFW Lands Acquisition Proposals





Chief Joseph

Asotin

Grande Ronde River

Snake River

Joseph Creek

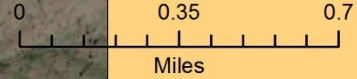
Ebsen Water Access

- Wildlife Area Units
- County Boundaries

Other Public and Private Land

Public Land Ownership

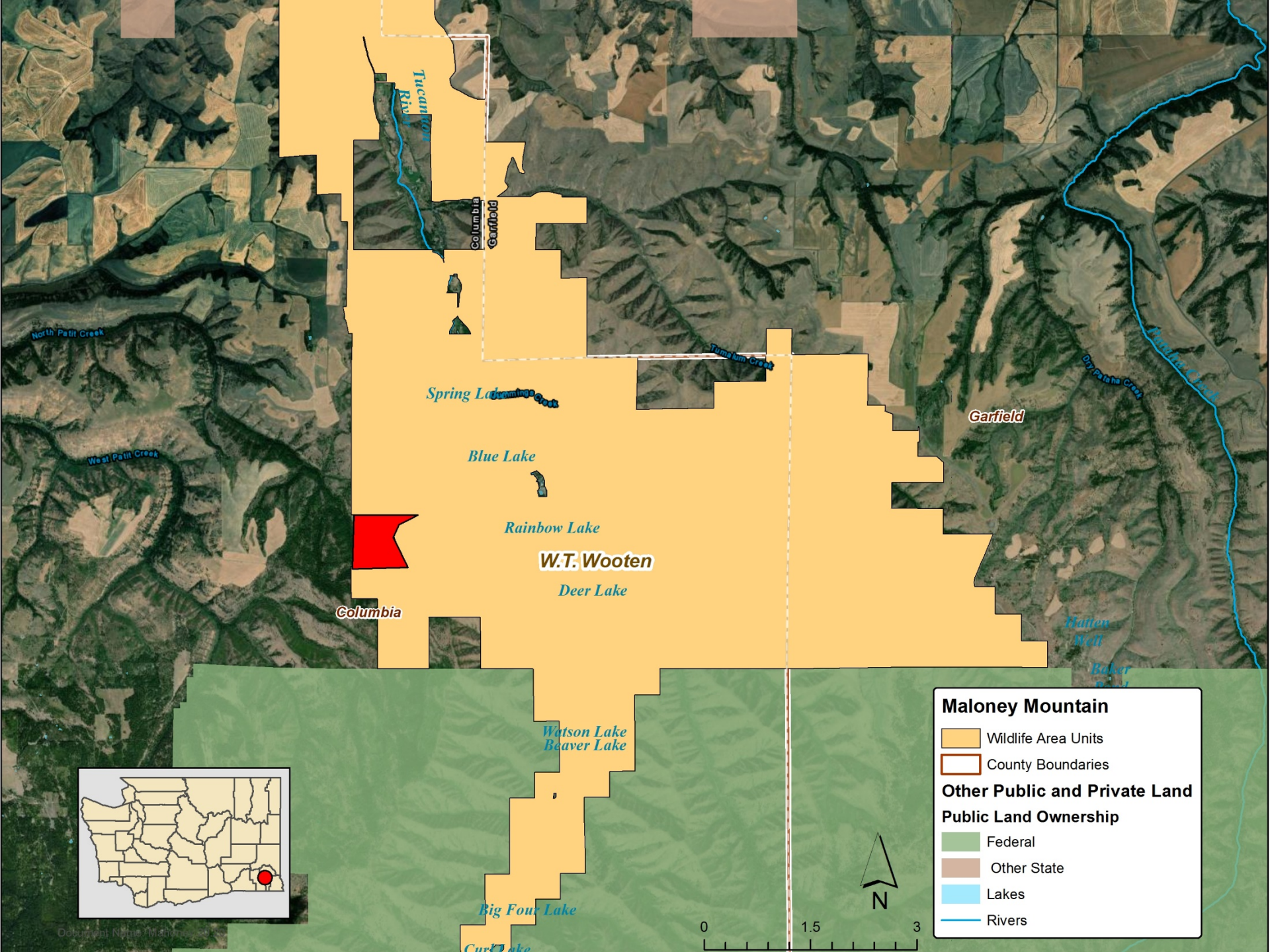
- Federal
- Lakes
- Rivers





Project Highlights

- 7.3 acres
- Ensures public boating and fishing access to this portion of the Grande Ronde River
- Operated and maintained by Washington Department of Fish and Wildlife through an agreement from the property owner
- Property will be donated by the current owner
- Provides public access to the Grande Ronde River for fishing and wildlife viewing.
- Currently 5 designated camping sites on the property (3 with gravel parking pads), 2 ADA-accessible concrete vault toilets with blacktop parking spaces, and a gravel boat launch
- Supported by Wild Steelhead Coalition



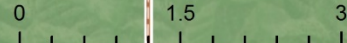
Maloney Mountain

- Wildlife Area Units
- County Boundaries

Other Public and Private Land

Public Land Ownership

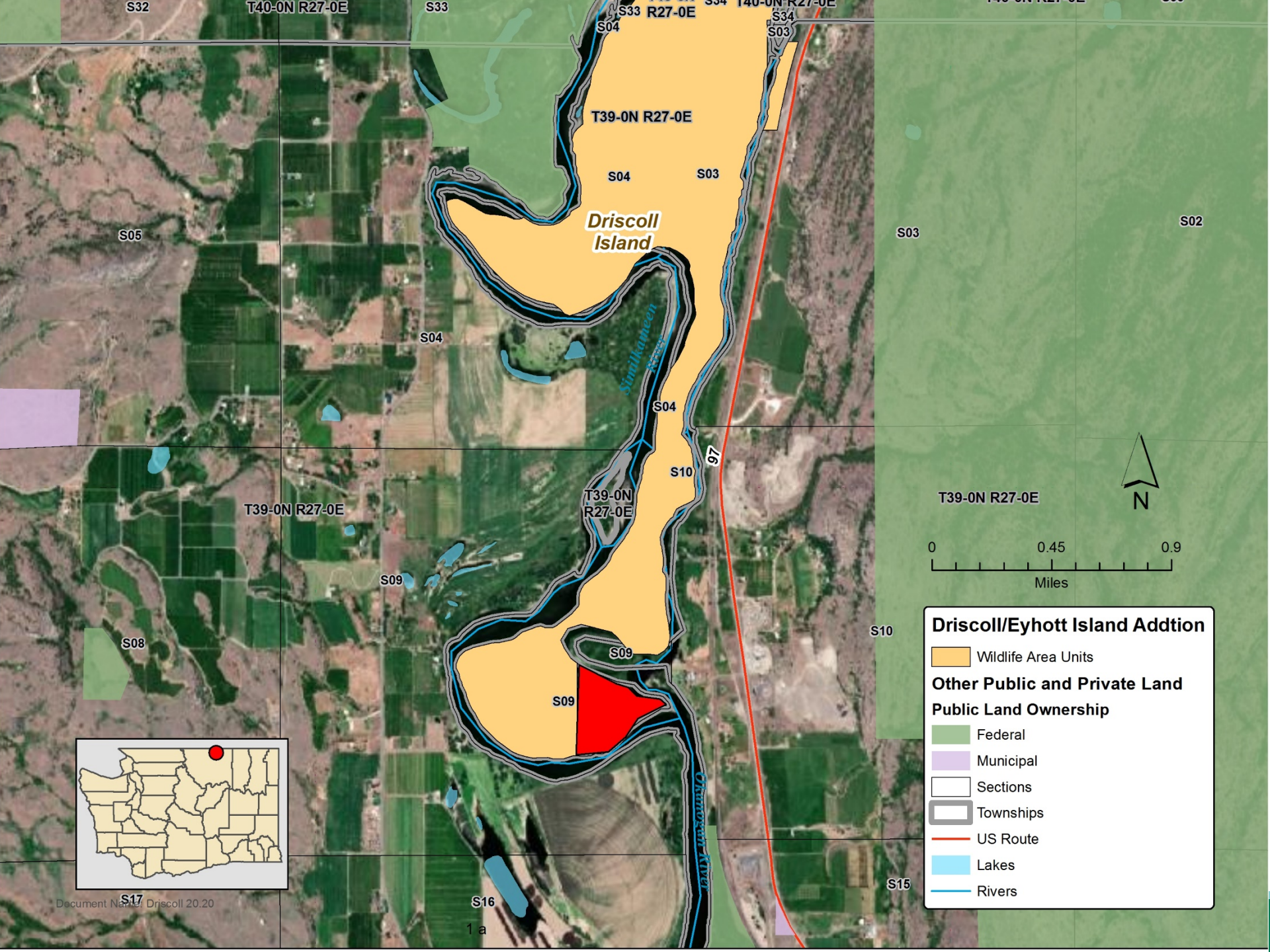
- Federal
- Other State
- Lakes
- Rivers





Project Highlights

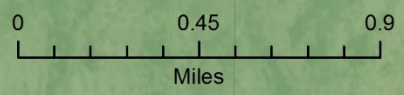
- 145 acres
- Inholding in the W.T. Wooten Wildlife Area along the North Patit Creek
- Protects intact riparian habitat and associated wetland area
- Recreational opportunities would include hunting, wildlife viewing, birdwatching, hiking and outdoor activities
- Incorporation of the property into the wildlife area would ensure long-term protection and enhanced management efficiencies for current WDFW lands



Driscoll Island

T39-0N R27-0E

T39-0N R27-0E



Driscoll/Eyhott Island Addition

- Wildlife Area Units
- Other Public and Private Land**
- Public Land Ownership**
- Federal
- Municipal
- Sections
- Townships
- US Route
- Lakes
- Rivers

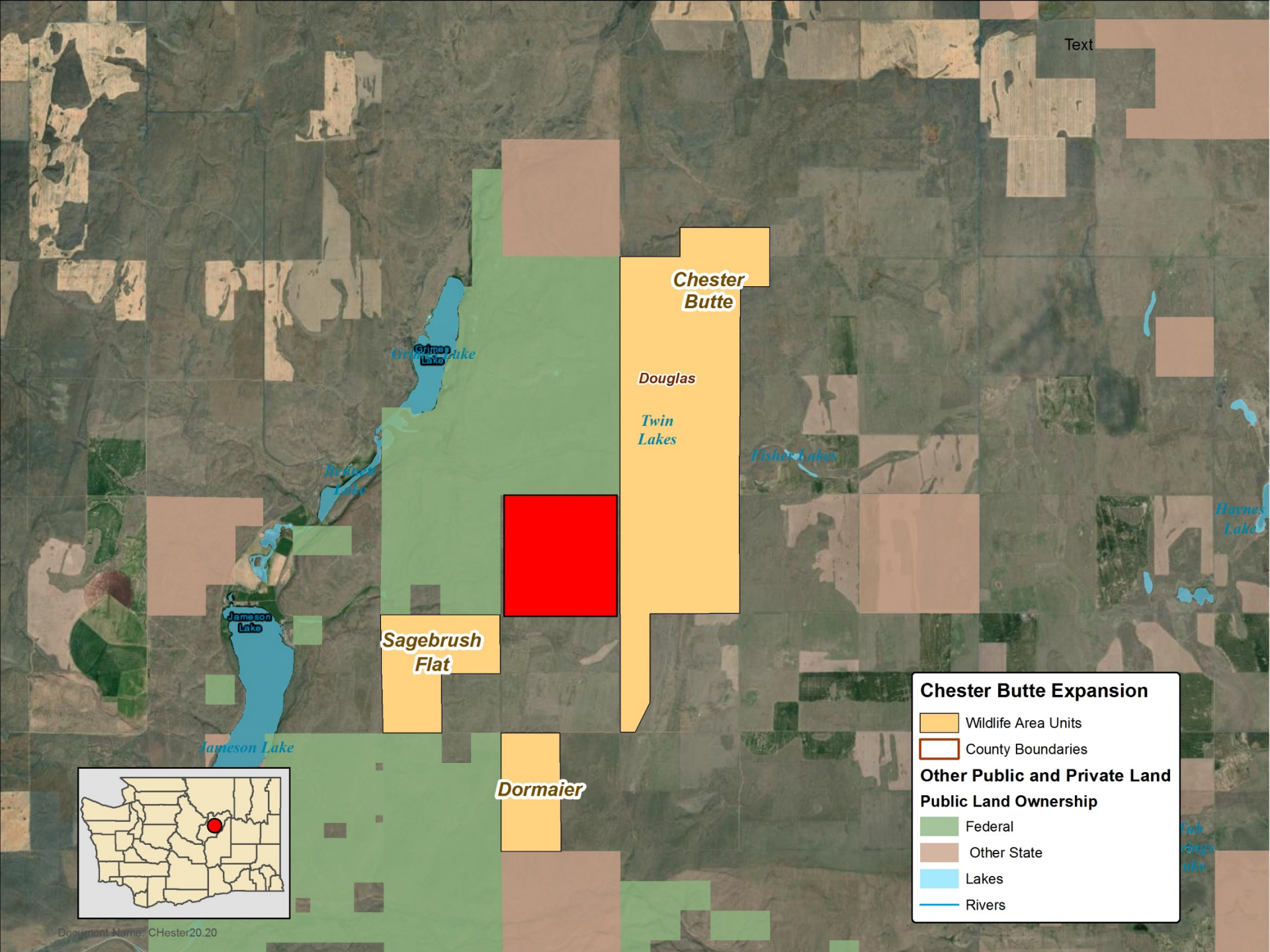




Project Highlights

- 16.5 acres
- Acquisition would protect last remaining parcel on Eyhott Island
- Critical riparian habitat with a diverse array of species including the Columbia River Steelhead and Pacific Lamprey.
- Provides an expanded opportunity for wildlife viewing, outdoor exploration, photography, and upland bird hunting.
- Supported by Okanogan County Commissioners

Text



Chester Butte

Douglas

Twin Lakes

Fisher Lakes

Haynes Lake

Grimo Lake

Refinery Lake

Jameson Lake

Jameson Lake

*Hub
rings
lake*

Sagebrush Flat

Dormaier

Chester Butte Expansion

- Wildlife Area Units
- County Boundaries

Other Public and Private Land

Public Land Ownership

- Federal
- Other State
- Lakes
- Rivers

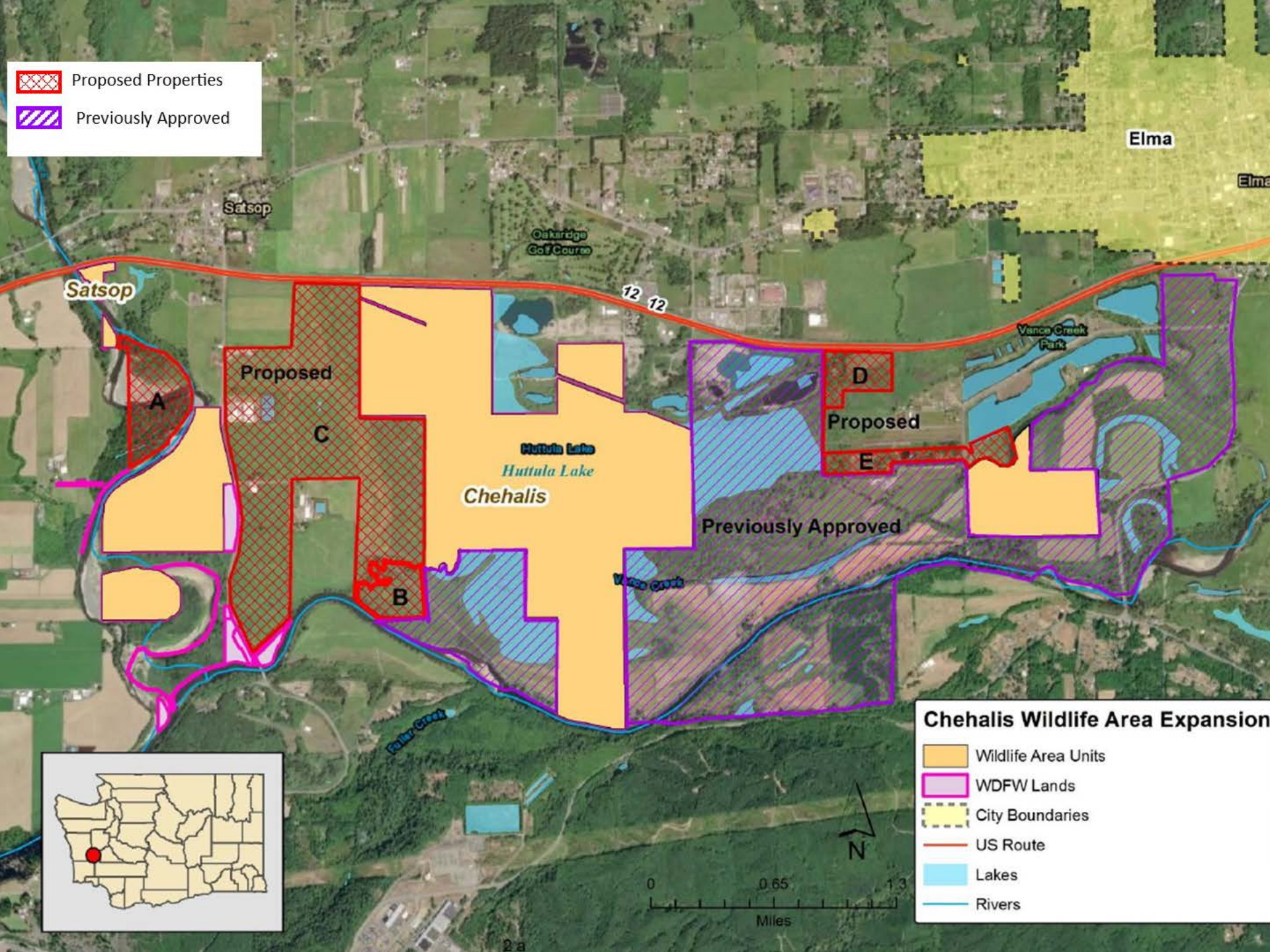




Project Highlights

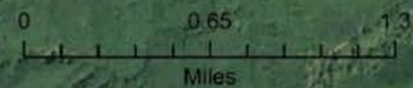
- 640 acres
- Property is immediately adjacent to the Chester Butte and Sagebrush Flat Wildlife area units
- This property was burned in the 2020 Pearl Hill fire
- Supports sage grouse, Washington ground squirrel, and pygmy rabbit management
- Connectivity would provide additional access to public land and benefit habitat value and protections in the region
- Property provides opportunities for viewing shrub-steppe species as well as quality hunting for mule deer, Hungarian partridge and other game animals
- Support from: Conservation Northwest

- Proposed Properties
- Previously Approved



Chehalis Wildlife Area Expansion

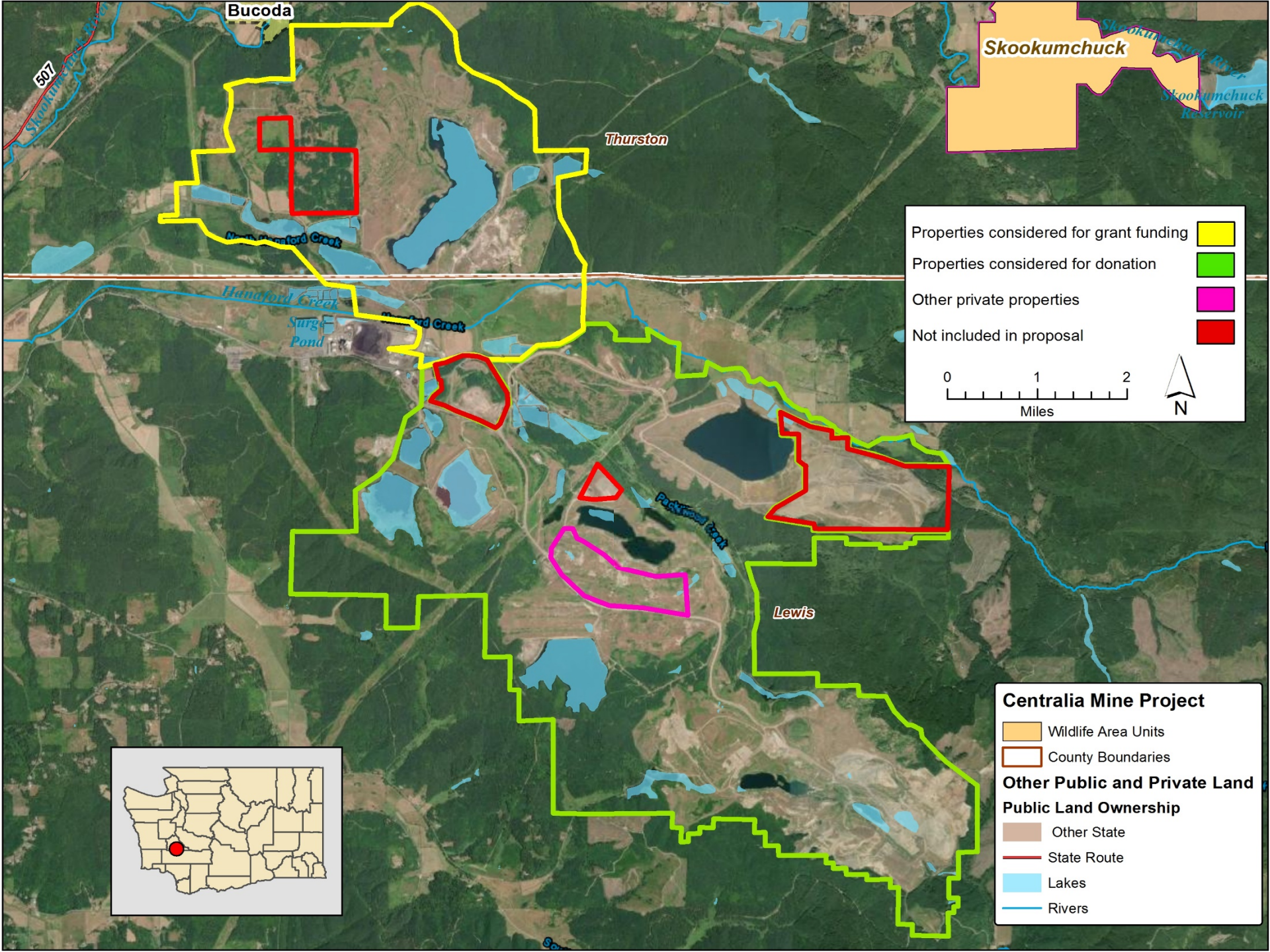
- Wildlife Area Units
- WDFW Lands
- City Boundaries
- US Route
- Lakes
- Rivers





Project Highlights

- Up to 1,504 acres
- Protects floodplain, riparian and wetland habitats
- Expands the current Chehalis Wildlife Area incorporating a greater proportion of the river shorelines and wetlands
- Approximately 2/3 of this proposed project was previously approved in the 2016 Lands 20/20 cycle and is being added here to extend its approval timeline
- Various fish and waterfowl species protected including the endemic Olympic Mudminnow, Coho salmon and other salmonids
- Recreation opportunities for hunting, hiking, and wildlife viewing
- Supported by Ducks Unlimited, Grays Harbor Audubon Society, Conservation Northwest, Migratory Bird Stamp and Art Program



Skookumchuck

Bucoda

Thurston

Lewis

Properties considered for grant funding ■

Properties considered for donation ■

Other private properties ■

Not included in proposal ■

0 1 2
Miles

N

Centralia Mine Project

■ Wildlife Area Units

□ County Boundaries

Other Public and Private Land

Public Land Ownership

■ Other State

— State Route

■ Lakes

— Rivers



507

North Hanford Creek

Hanford Creek

Surge Pond

Hanford Creek

Pockwood Creek

Skookumchuck River
Skookumchuck Reservoir



Project Highlights

- Up to 9,800 acres
- Multi Phased project of donation and acquisition of the Centralia Mine
- Diverse array of habitats that already exist at the site
- Property will form a new wildlife area close to urban centers allowing users to connect with diverse nature
- Current habitat supports a variety of fish and wildlife including elk, deer, salmon, warmwater fish, and many others
- Rare opportunity to manage a landscape that allows room for creation or restoration of high-quality wildlife habitats such as wetlands and grasslands to benefit waterfowl, amphibians, mammals, reptiles, and fish.
- Potential to provide habitat for threatened or endangered species, including the western pond turtle, Oregon spotted frog, and streaked horned lark
- Adding public lands to the region would benefit the local economy as well as public access
- Supported by TransAlta USA, Rocky Mountain Elk Foundation, Conservation Northwest, Blackhills Audubon Society, Friends of Grays Harbor, Grays Harbor Audubon Society President, South Sound Chapter of Puget Sound Anglers,

Public Comment Highlights

SUPPORT (~88%)

- Enhanced open space/outdoor recreation
- Connectivity for wildlife
- Enhanced wildlife habitat and species protection
- Public access



Public Comment Highlights

CONCERNS (~10%)

- Being sure land accessibility stays intact
- Taking land off tax rolls in Lewis County
- Local economy, Lewis County
- Operating budget
- Local governments/industry: Lewis County Commissioners, Lewis County Prosecuting Attorneys Office, Mayors of the Cities of Morton, Mossyrock, Napavine, Pe Ell, Toledo, Vader, Winlock; 2 Rivers Cattle Company LLC; Olympic View Dairy, LLC;
- Questions from City of Centralia, City of Chehalis, Grays Harbor County Commissioners

* 2% of our comments asking for more information



Next Steps

- Director's Approval to pursue project
- Explore funding opportunities
- Continued discussion/ outreach
- Transaction processing
- FWC Approval of final land acquisition
- Land management



A wide-angle landscape photograph showing a large body of water in the middle ground, surrounded by rolling hills and mountains under a bright blue sky with scattered white clouds. The foreground is a grassy slope with some small evergreen trees. The text "Questions?" is centered over the image in a white, sans-serif font.

Questions?