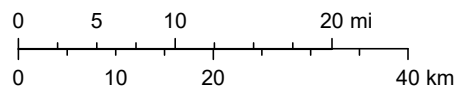


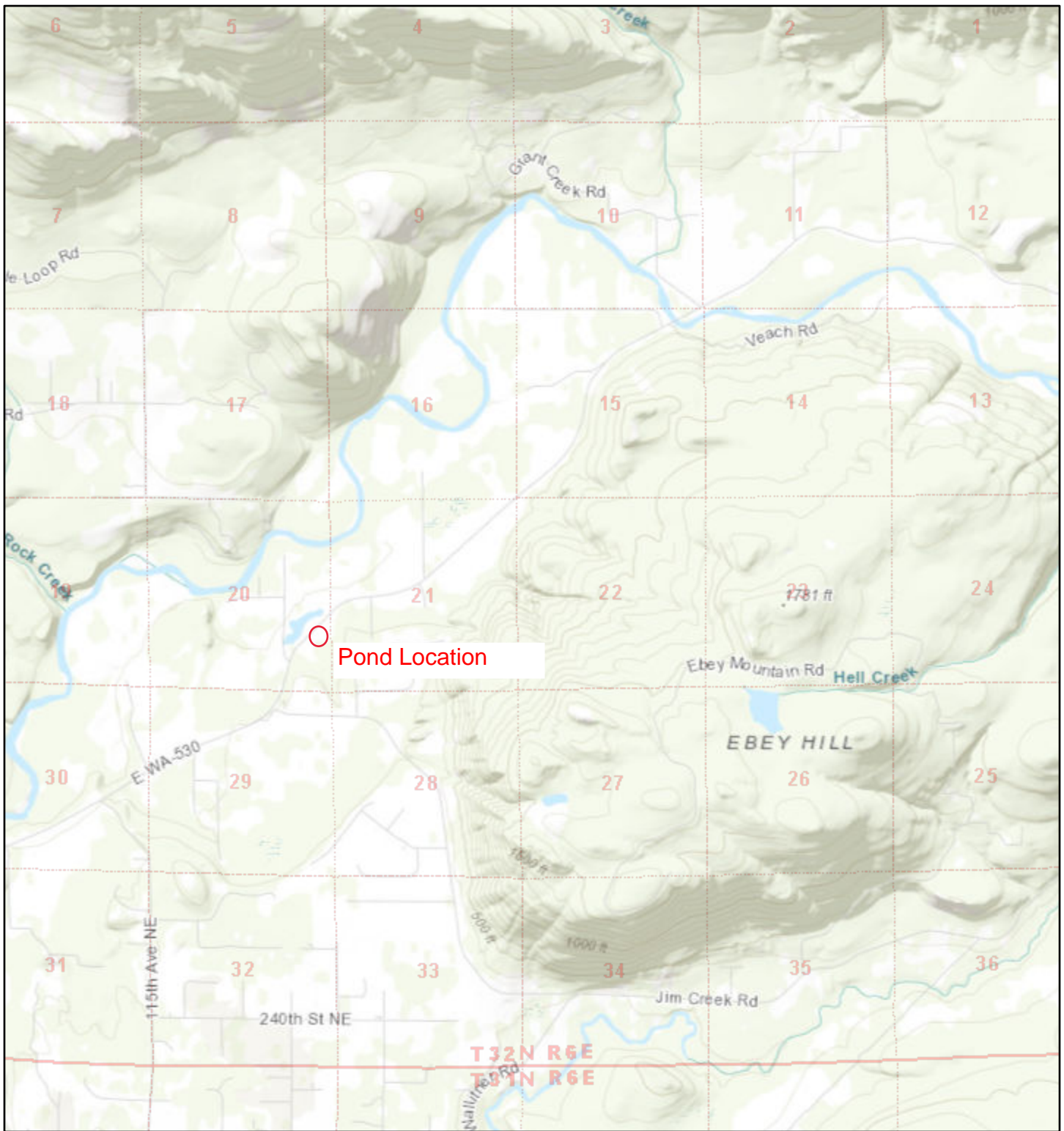


July 8, 2021

1:1,155,581



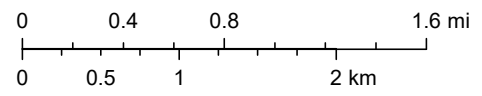
Sources: Esri, HERE, Garmin, Intermap, increment P Corp., GEBCO, USGS, FAO, NPS, NRCAN, GeoBase, IGN, Kadaster NL, Ordnance Survey, Esri Japan, METI, Esri China (Hong Kong), (c) OpenStreetMap contributors, and the GIS User Community



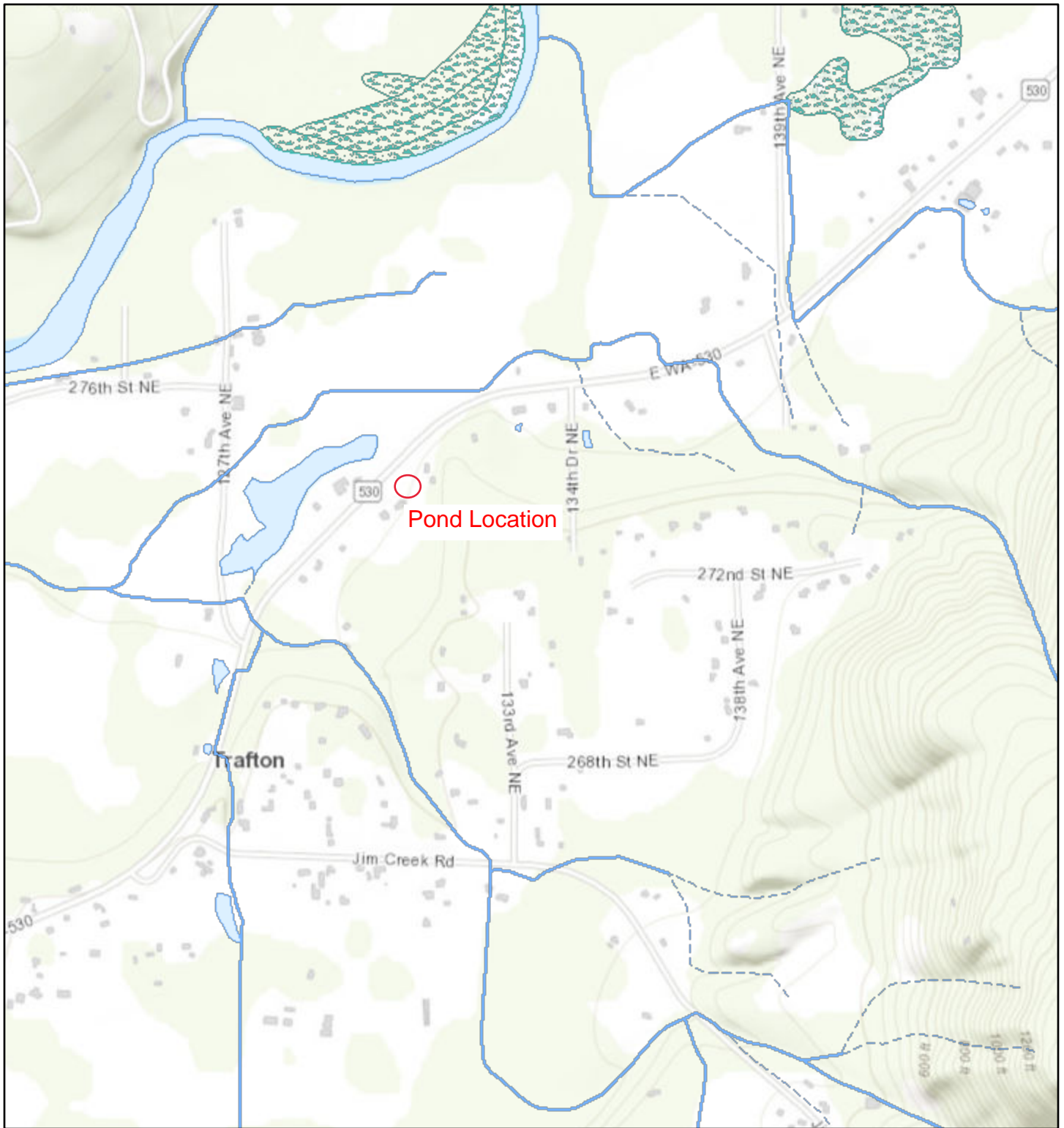
July 8, 2021

1:72,224

- Section
- Township

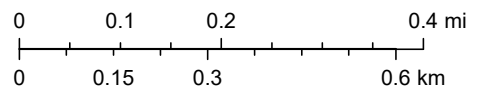


Sources: Esri, HERE, Garmin, Intermap, increment P Corp., GEBCO, USGS, FAO, NPS, NRCAN, GeoBase, IGN, Kadaster NL, Ordnance Survey, Esri Japan, METI, Esri China (Hong Kong), (c) OpenStreetMap contributors, and the GIS User Community



July 8, 2021

1:18,056



Sources: Esri, HERE, Garmin, Intermap, increment P Corp., GEBCO, USGS, FAO, NPS, NRCAN, GeoBase, IGN, Kadaster NL, Ordnance Survey, Esri Japan, METI, Esri China (Hong Kong), (c) OpenStreetMap contributors, and the GIS User Community, USGS/NHD, Dale Gombert (WDFW)

PHILIP L HENDERSON 206-818-6624 / 360 403-8563
 12926 SR 530 NE ARLINGTON, WA. (APPLICATION) FOR PLANTING TRIPOD GRASS CAMP

Map Title NO NAME POND

Snohomish County
 Assessor Washington



Legend

- Parcel
- Recent Sales 2021
- Recent Sales 2020
- Recent Sales 2019
- City Boundary
- County Park
- National Forest
- Water
- Street Types**
- Interstate
- State Route
- Local Road

All maps, data, and information on this report ("Data"), are for illustrative purposes only and are not to be considered an official citation to, or representation of, the Snohomish County Code. Amendments and updates to the Data, together with other applicable County Code provisions, may apply which are not depicted herein. Snohomish County makes no representation or warranty regarding the content, accuracy, timeliness, completeness or quality of the Data contained herein and expressly disclaims any warranty of merchantability or fitness for any particular purpose. All persons accessing or otherwise using this Data assume all responsibility for use thereof and agree to hold Snohomish County harmless from and against any damages, loss, claim or liability arising out of any error, defect or omission contained herein and such Washington State Law, Ch. 42.56 RCW, prohibits state and local agencies from providing access to lists of individuals intended for use for commercial purposes and, thus, no commercial use may be made of any Data containing lists of individuals contained herein.

5/18/2021

