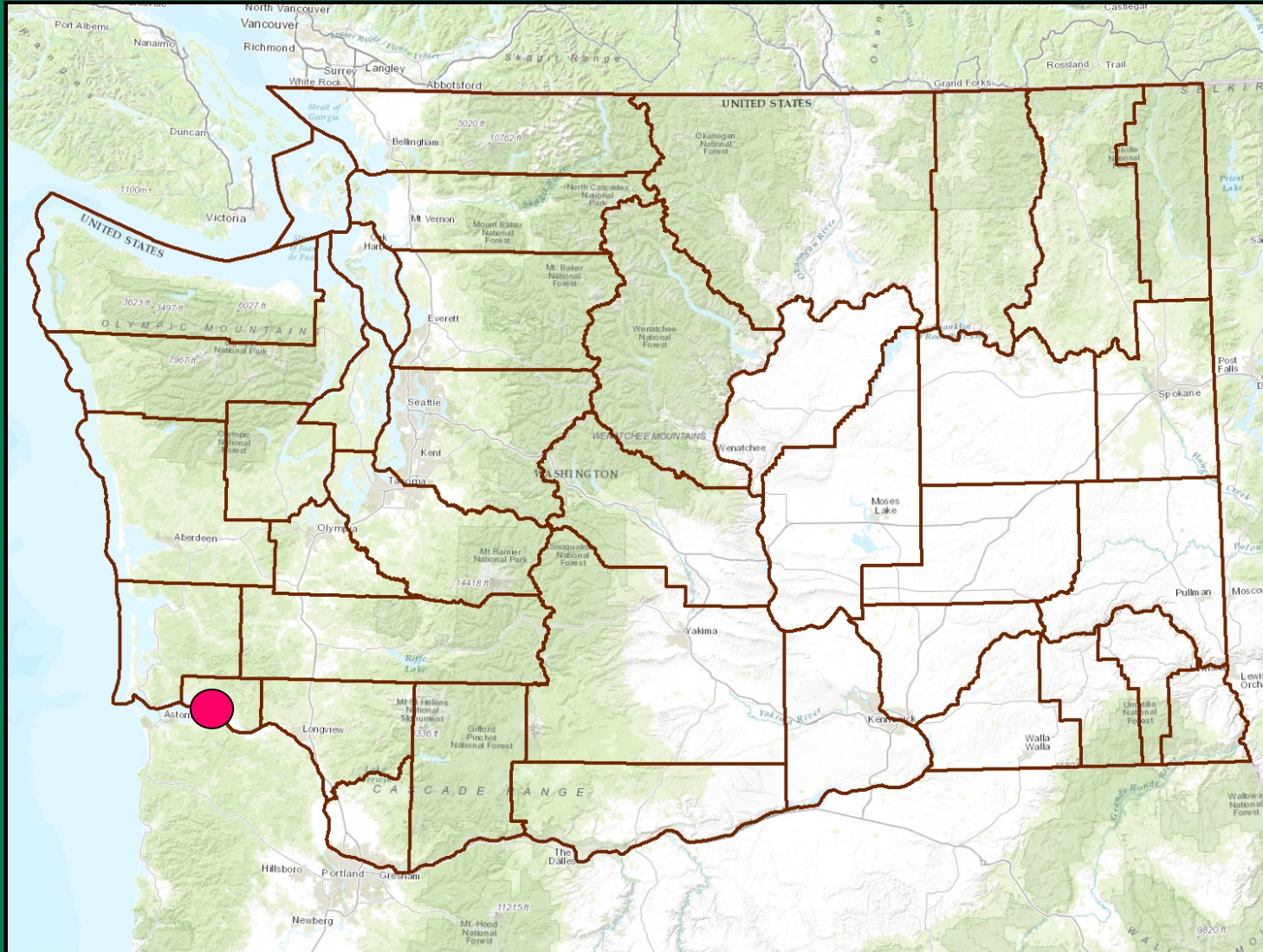


Agenda Item: 4. Lands Transaction

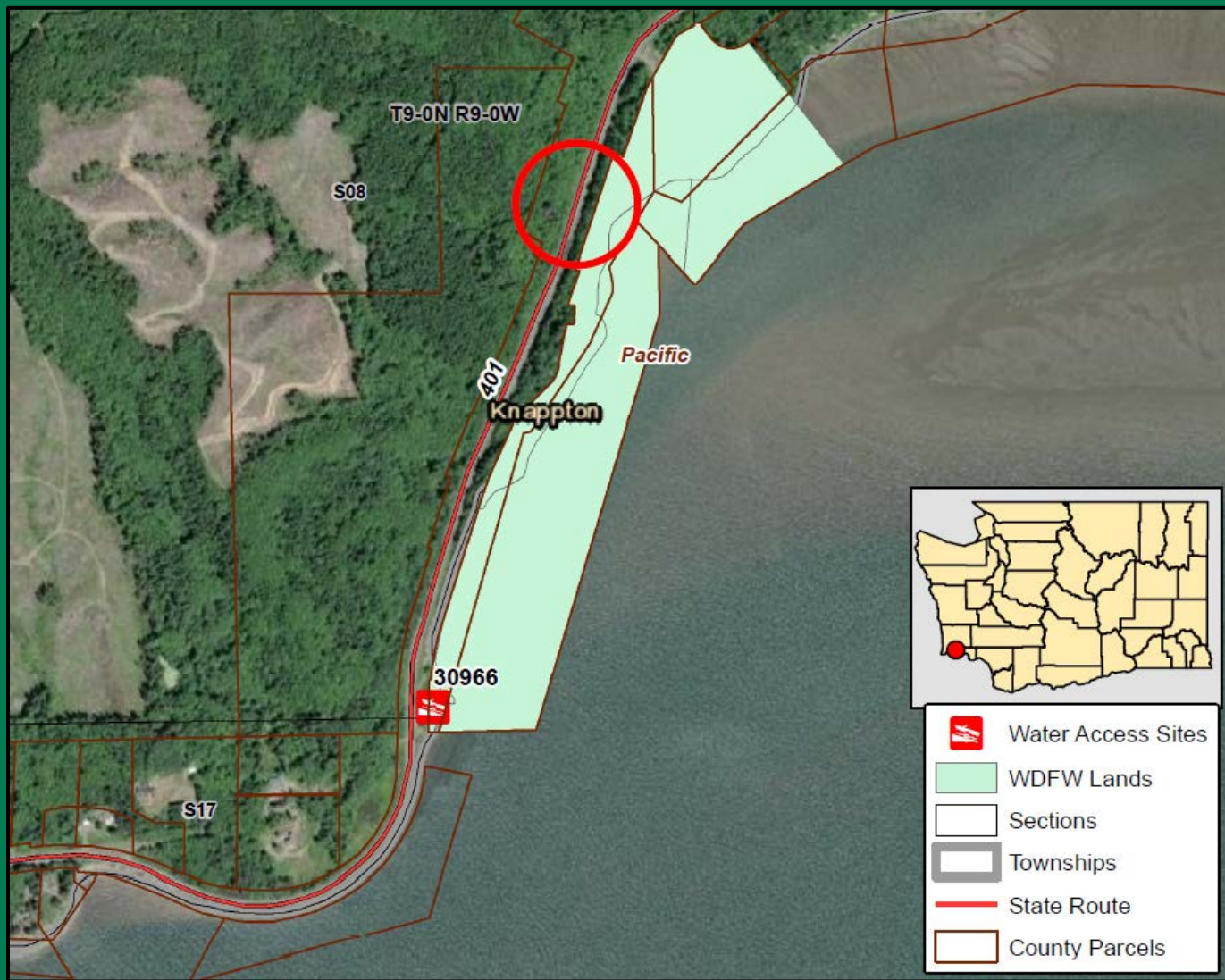
Karen Edwards
Real Estate Manager, Wildlife Program



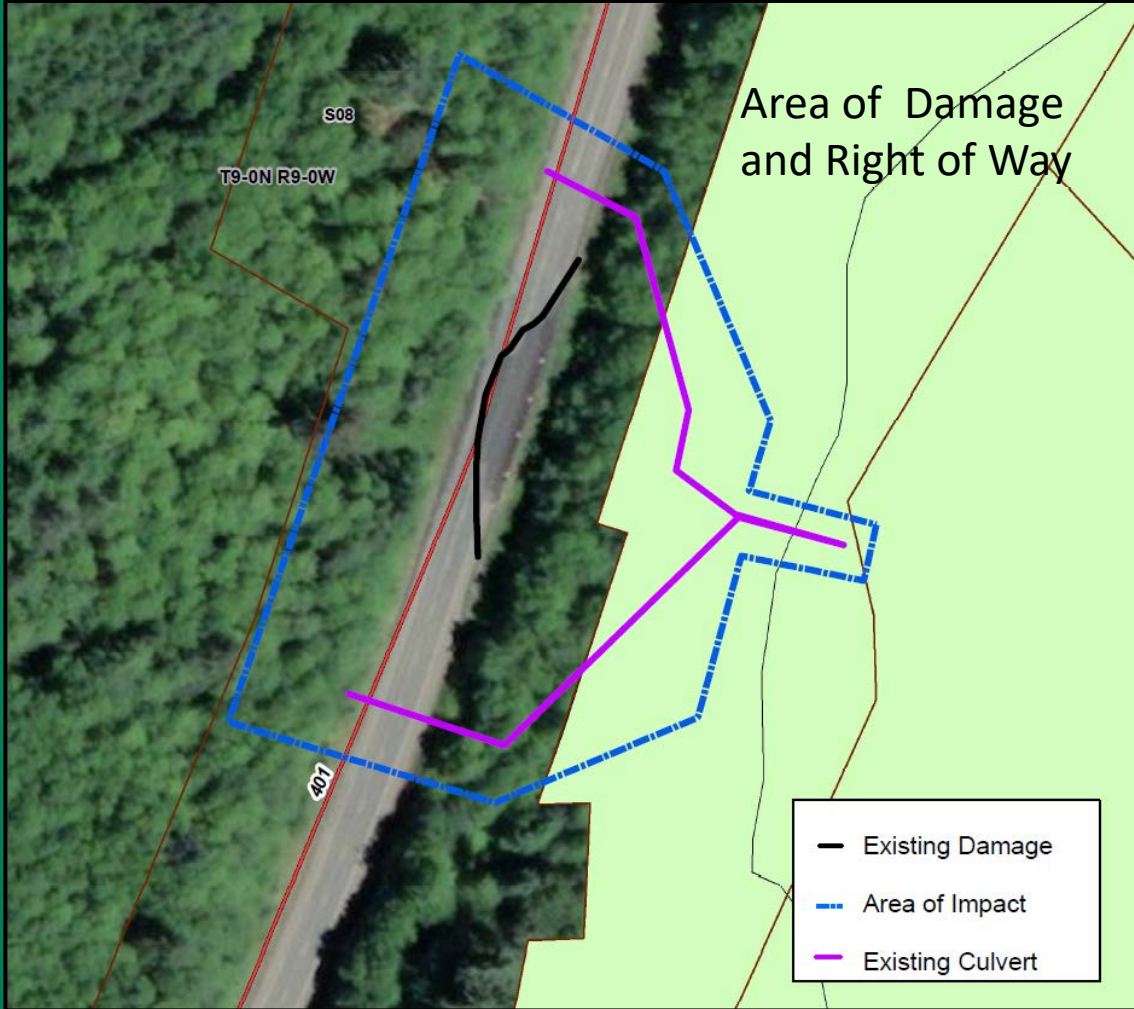
Knapppton Area Right of Way Pacific County



Knapppton Area Right of Way Pacific County



Knappton Area Right of Way Pacific County



Project Area



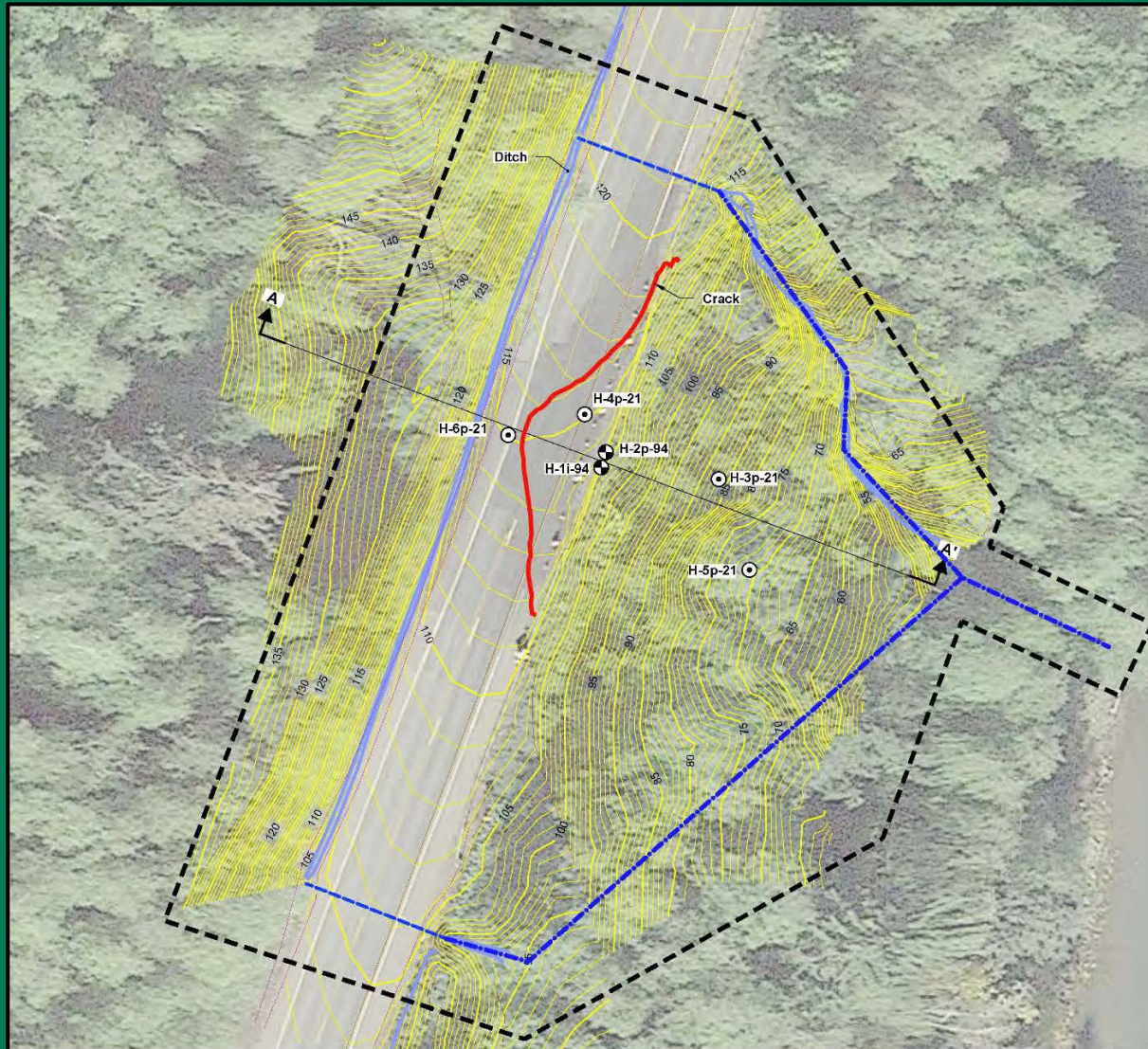
Knapppton Area Right of Way Pacific County



Damage to
Roadway



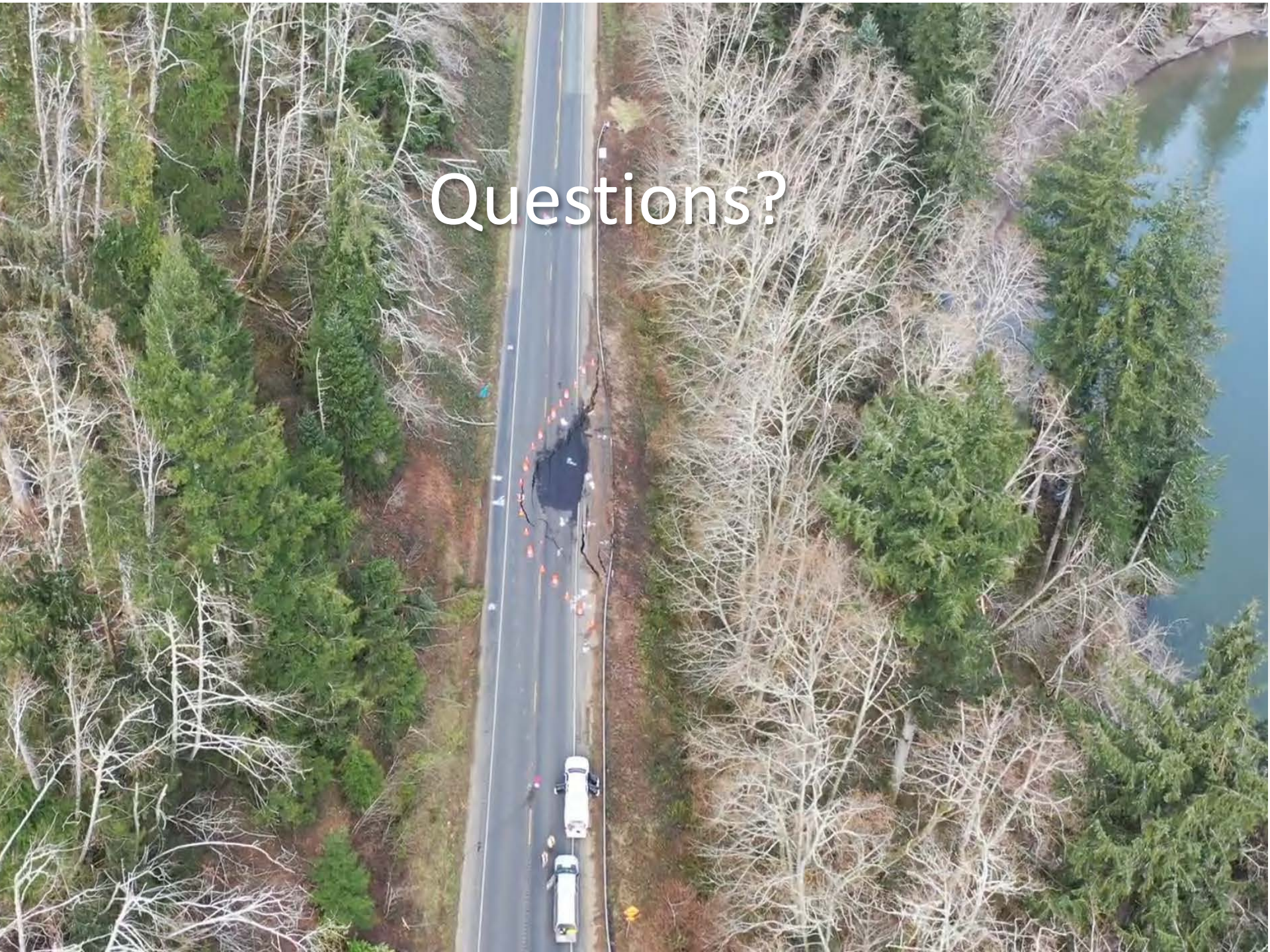
Knapppton Area Right of Way Pacific County



Knappton Area Right of Way Pacific County



Questions?



Agenda Item: 4. Upcoming Projects Update

Karen Edwards
Real Estate Manager, Wildlife Program



WDFW – Real Estate Land Transaction

Upcoming Project Updates



- [McLoughlin Falls West](#) – RCO WWRP - Critical Habitat
 - \$1,500,000
 - 730 acres, Okanogan County
 - Partner/Western Rivers Conservancy
 - Mule deer, Sharp-tail grouse, Summer chinook, steelhead
 - Lands 20/20 approval - 2019



- [Golden Doe](#) – RCO WWRP - Critical Habitat
 - \$1,900,000
 - 110 acres, Okanogan County
 - Mule deer corridor
 - Lands 20/20 approval - 2019



- [Hunter Mountain](#) – RCO WWRP - Critical Habitat
 - \$650,000
 - 400 acres, Okanogan County
 - Partner/Okanogan County
 - Corridor for several species
 - Lands 20/20 approval - 2020



WDFW – Real Estate Land Transaction

Upcoming Project Updates



- [Rendezvous Additions](#) – RCO WWRP - Critical Habitat
 - \$1,275,000
 - 210 acres, Okanogan County
 - Mule deer migration corridor
 - Lands 20/20 approval - 2020



- [Wenas - Cleman Mountain](#) – RCO WWRP - Critical Habitat
 - \$1,875,000
 - 1,100 acres, Yakima County
 - Shrubsteppe & riparian
 - Lands 20/20 approval - 2020



- [Ebey Island WLA Addition](#) – RCO WWRP - Urban Wildlife
 - \$950,000
 - 25 acres, Snohomish County
 - Waterfowl
 - Lands 20/20 approval - 2020



WDFW – Real Estate Land Transaction

Upcoming Project Updates



- [Simcoe 2020](#) – RCO WWRP - Critical Habitat
 - \$4,000,000
 - Up to 5,112 acres, Klickitat County
 - Western gray squirrel
 - Lands 20/20 approval - 2016



- [Twin Rivers & West Twin](#) – RCO WWRP - Riparian
 - \$500,000 (pairs with a Salmon State PSAR grant \$1,330,000)
 - 216 acres, Clallam County
 - North Olympic Land Trust – partner
 - Riparian habitat
 - Lands 20/20 approval - 2019



- [Chehalis River Davis Creek Expansion](#) – RCO WWRP - Riparian
 - \$1,600,000 (funded at \$437,780) (pairs with a Chehalis Basin ASRP grant \$360,000)
 - Up to 416 acres, Grays Harbor County
 - Riparian habitat
 - Lands 20/20 approval - 2020

