

Willapa Bay Salmon Management Policy C-3622 Fish Committee Meeting September 16, 2021

Marlene Wagner
South Coast
Policy Lead

Dr. Ken Warheit
Molecular Geneticist
Fish Health Lab

Chad Herring
Anadromous
Resources Policy
Analyst



Presentation Outline

- Introduction & Policy Review
- Policy Revisions: Staff Recommendations
 - Anadromous Salmon and Steelhead Hatchery Policy (C-3624)
 - Fisheries and Species-Specific Guidance



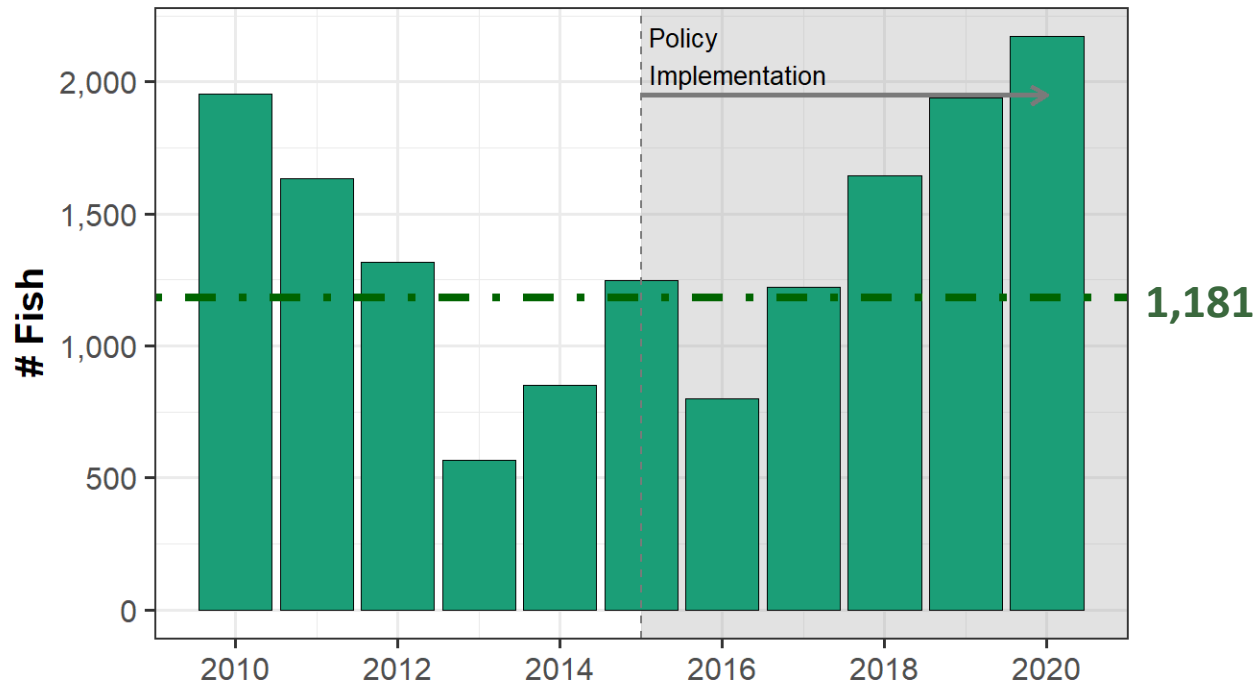


Policy Review: Successes & Challenges

Intro: C-3622 Comprehensive Review Successes

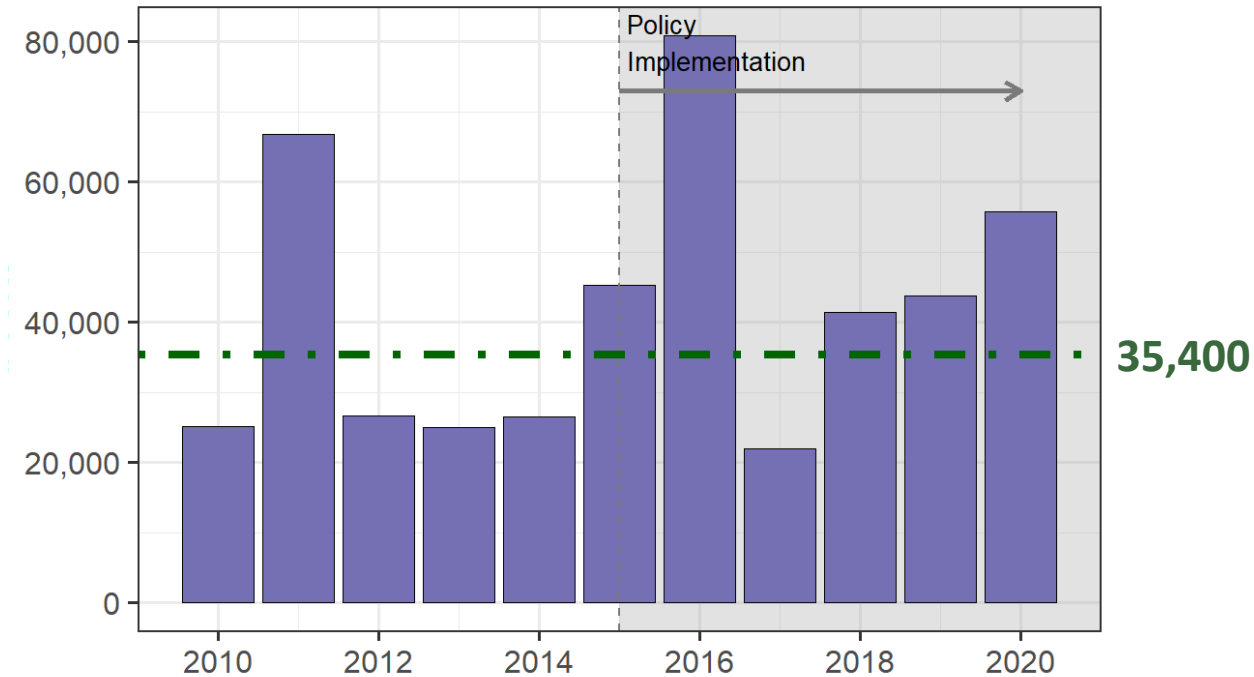
- Willapa River Chinook escapement

Willapa River Natural Chinook Spawning Escapement



- Chum escapement

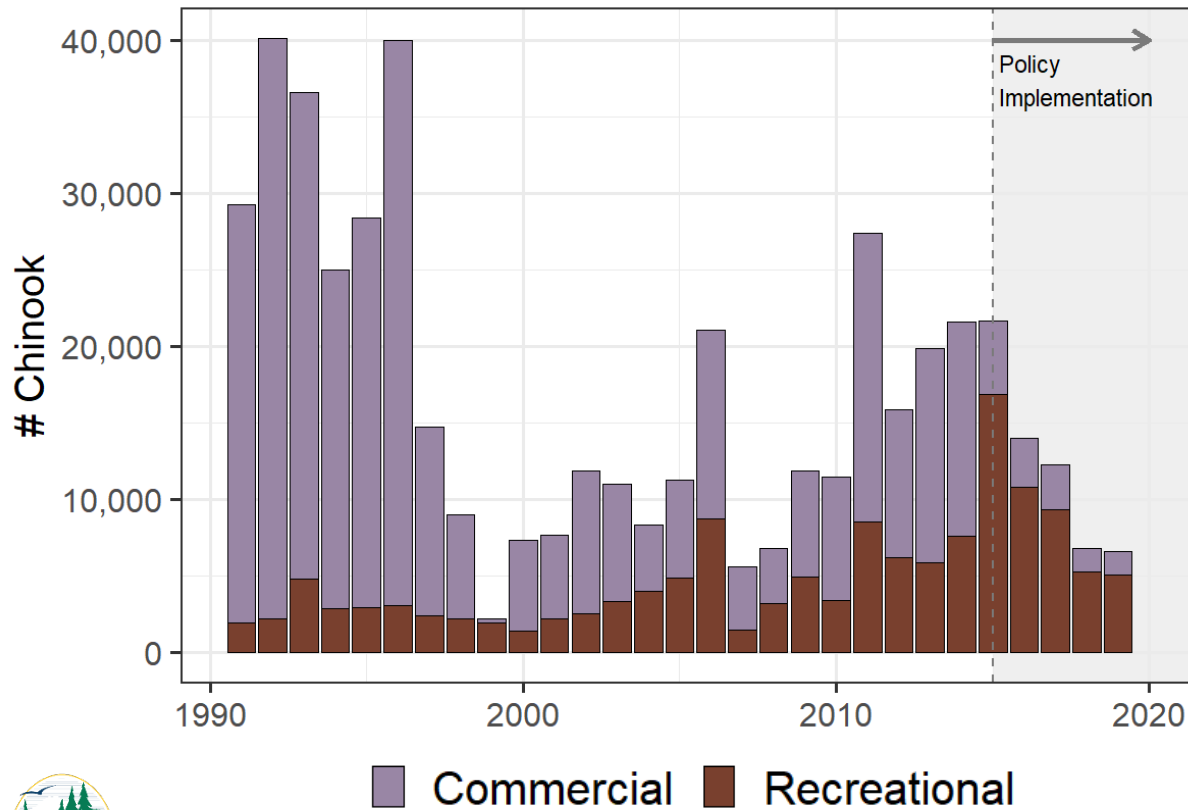
Willapa Basin Chum Escapement



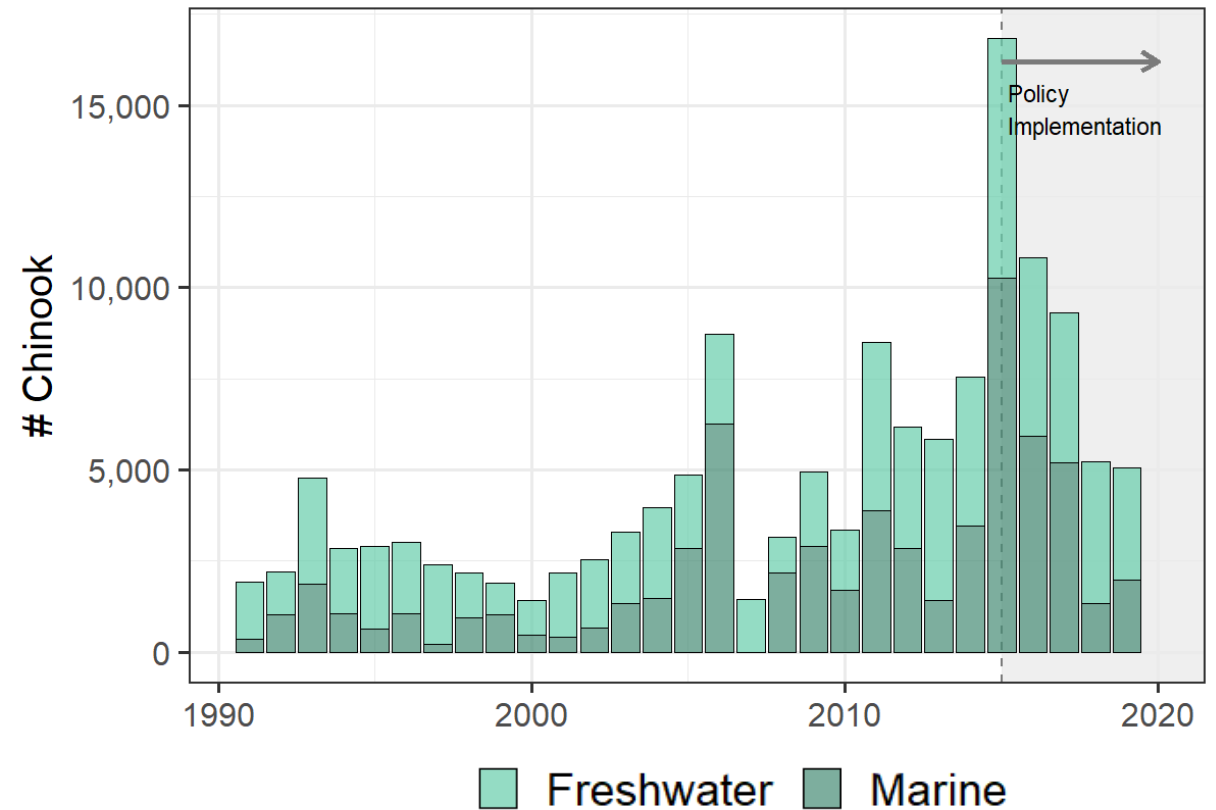
Intro: C-3622 Comprehensive Review Successes

- Implemented robust monitoring programs
 - Recreational Chinook salmon harvest

Commercial & Recreational Chinook Catch 1991-2019



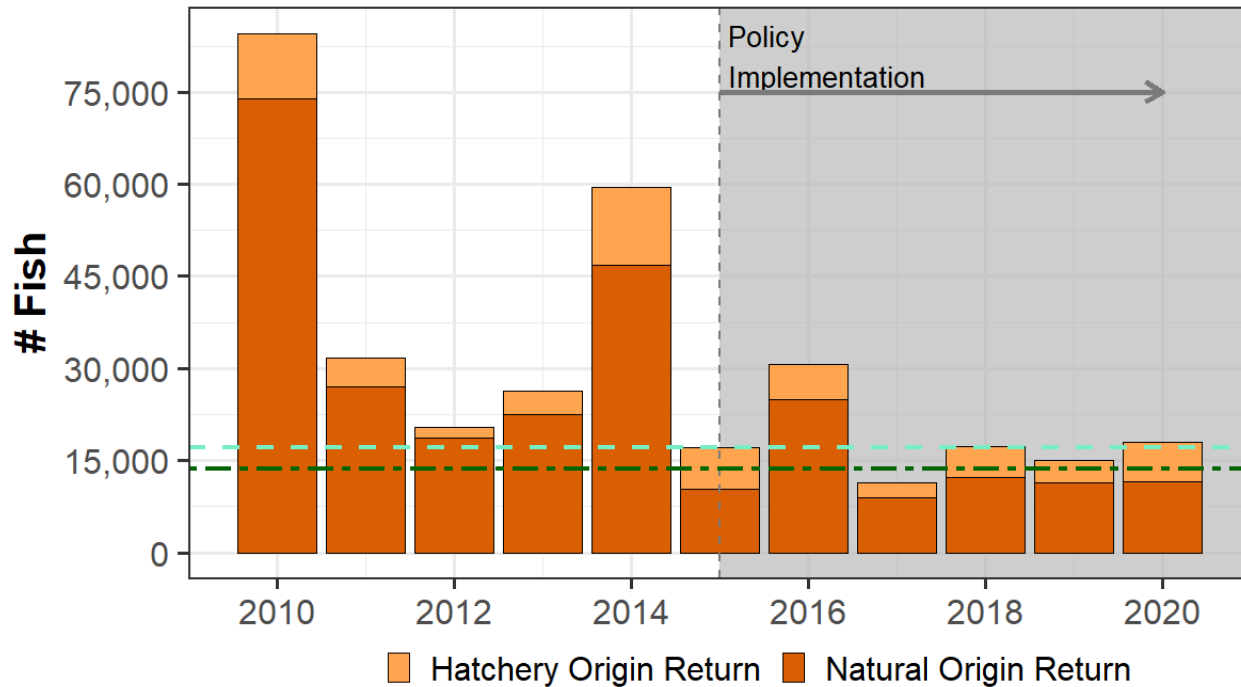
Recreational Chinook Catch 1991-2019



Intro: C-3622 Comprehensive Review Challenges

- Coho escapement
- Reduced ocean survival and growth

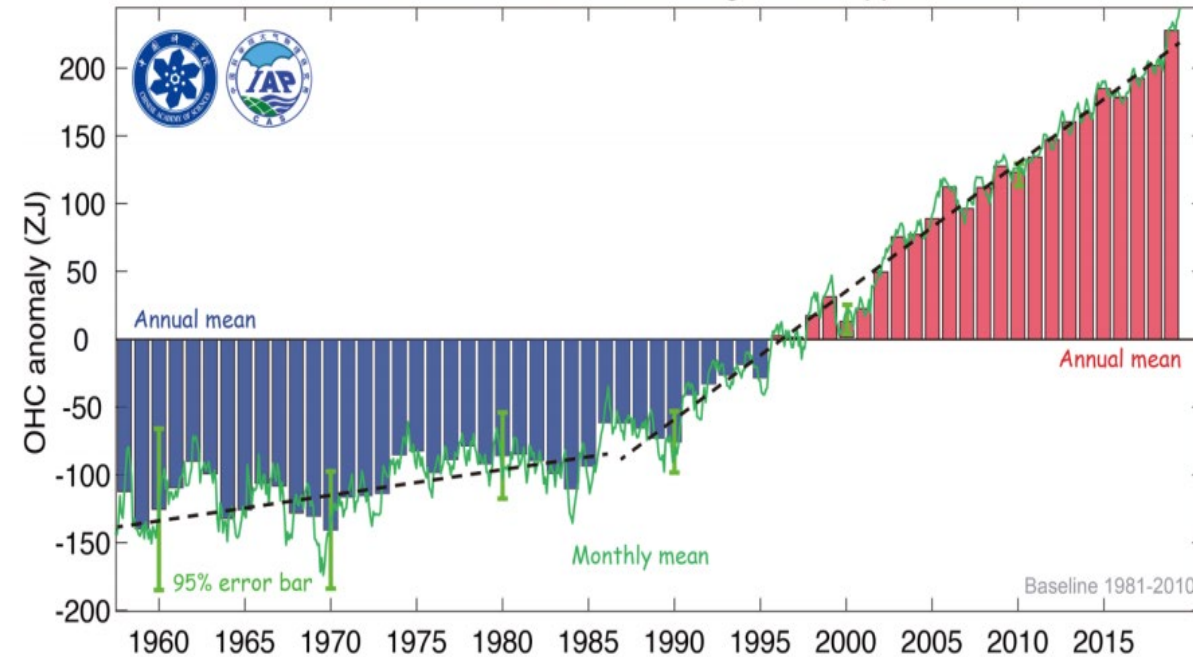
Willapa Basin Coho Escapement



PFMC Escapement Goal: 17,200

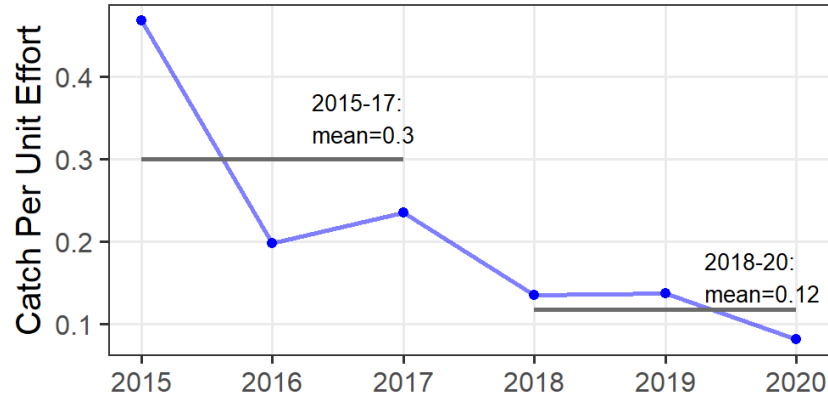
WDFW Natural Origin Escapement Goal: 13,600

Global ocean heat content change in the upper 2000 m

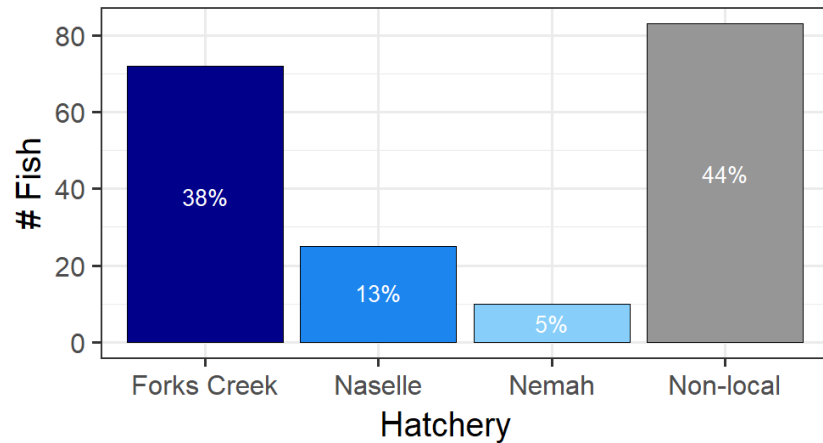


Intro: C-3622 Comprehensive Review Challenges

- Decreasing CPUE in MA 2-1

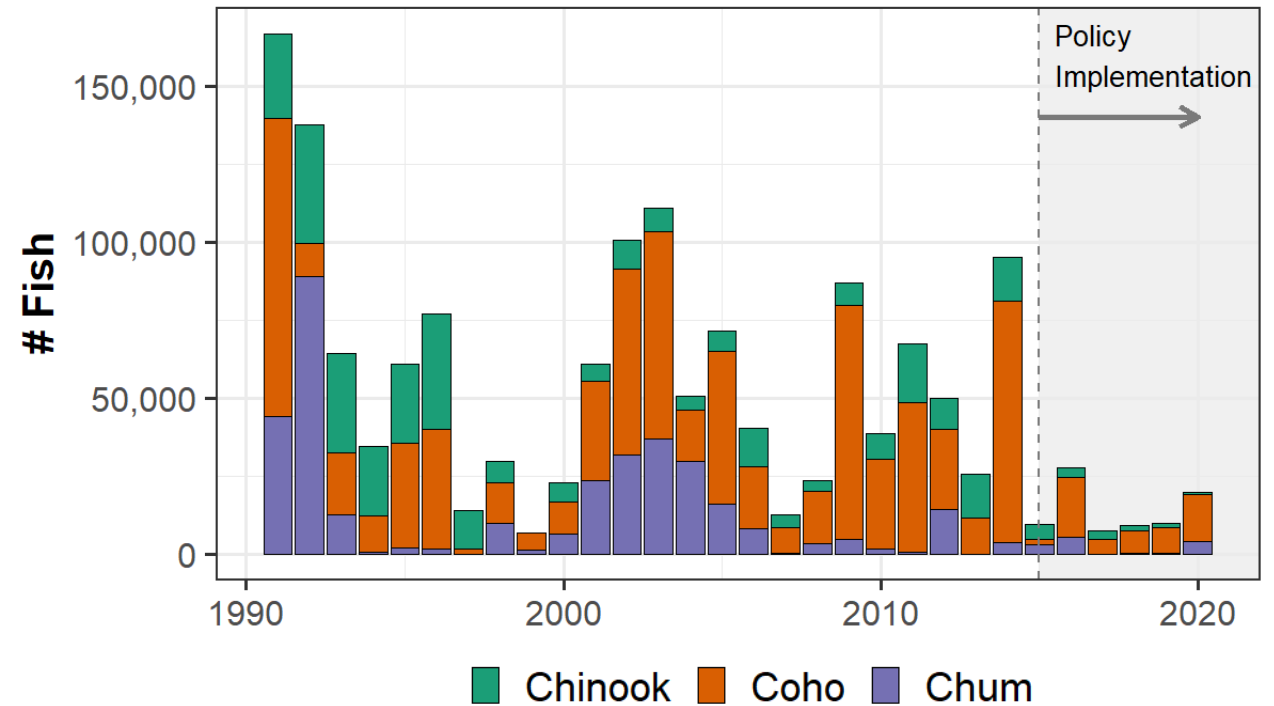


- May be related to decreased smolt production in Forks Creek



- Commercial catch and effort

WB Commercial Catch 1991-2020





Policy Revisions: Staff Recommendations

C-3622 Revision Analyses: Staff Assistance

- Science Division
 - H.E.A.T. Unit
 - Regional Staff
- Headquarters Fish Management Staff



General Policy Changes



Conceptual Approach

- Consistent with other WA state management plans and policies (“Skinny Policy”)
- Science-based and data-driven
- Adaptive and flexible to adjust to changing situations



Policy C-3622 Staff Recommended Revisions

Purpose

- No change

Definition and Goals

- No change

General Policy Statement

- Strike steelhead from language

General Policy Statement

This policy provides a cohesive set of principles and guidance to promote the conservation of wild salmon ~~and steelhead~~ and improve the Department's management of salmon in the Willapa Bay Basin. The Washington Fish and Wildlife Commission (Commission) recognizes that management decisions must be informed by fishery monitoring (biological and economic), and that innovation and adaptive management will be necessary to achieve the stated purpose of this policy. By improving communication, information sharing, and transparency, the Department shall promote improved public support for management of Willapa Bay salmon fisheries.



Policy C-3622 Staff Recommended Revisions



Guiding Principles

- Hatchery reform
- The new Commission Anadromous Salmon and Steelhead Hatchery Policy C-3624 will provide the management path.
- Hatchery Management Plans (HMPs) will detail the scientific framework behind production levels.
- Department will prioritize the development of Willapa Bay-specific HMPs.

FISH AND WILDLIFE COMMISSION POLICY DECISION

POLICY TITLE: Anadromous Salmon and Steelhead Hatchery Policy

POLICY NUMBER: C-3624

Effective Date: April 9, 2021
Termination Date: N/A

Supersedes: Policy C-3619 Adopted November 5, 2009

Approved by:

A handwritten signature in black ink, appearing to read "Doug M. Carpenter".

Chair, Washington Fish and Wildlife Commission



Anadromous Salmon and Steelhead Hatchery Policy (C-3624)

- Hatchery Management Plans (HMPs) required for every anadromous salmon and steelhead hatchery program
- HMPs built on the science-based risk management framework described in Technical Procedures document (TPD)
- TPD developed in consultation with Tribal Co-Managers



Anadromous Salmon and Steelhead Hatchery Policy (C-3624)

1. HMPs developed in priority order
 - a) Hatcheries with approved HGMPs
 - b) Hatcheries associated with SRO prey initiative
 - c) Other hatcheries

2. Until HMPs are developed
 - a) Hatchery operational plans, goals and objectives in effect June 14, 2018
 - b) Exceptions:
 - Columbia River Salmon Fishery Management Policy
 - Willapa Bay Salmon Fishery Management Policy
 - 2018 SRO prey initiative



Anadromous Salmon and Steelhead Hatchery Policy (C-3624)

Hatchery operational plans, goals and objectives described in the current Willapa Bay Salmon Fishery Management Policy are insufficient

HMPs are required for:

- Fall Chinook, Coho, and Chum from:
 - Forks Creek Hatchery
 - Naselle Hatchery
 - Nemah Hatchery

Include the development of Willapa Bay HMPs as part of the Hatchery Policy work, as one of the priority sets of hatcheries.





Fisheries and Species-Specific Management

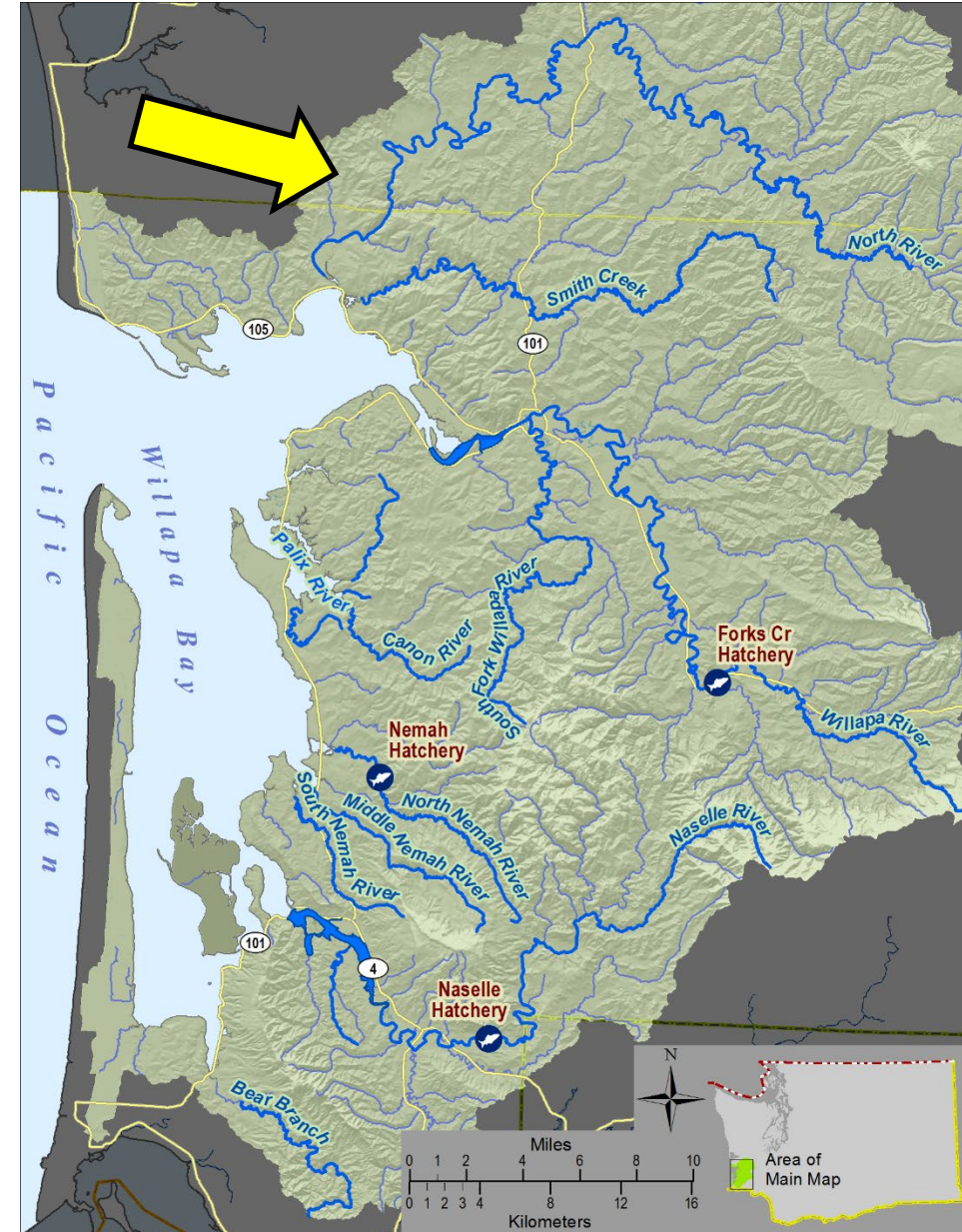
North River: Fall Chinook

Wild Salmon Management Zone

- No hatchery releases of any salmon

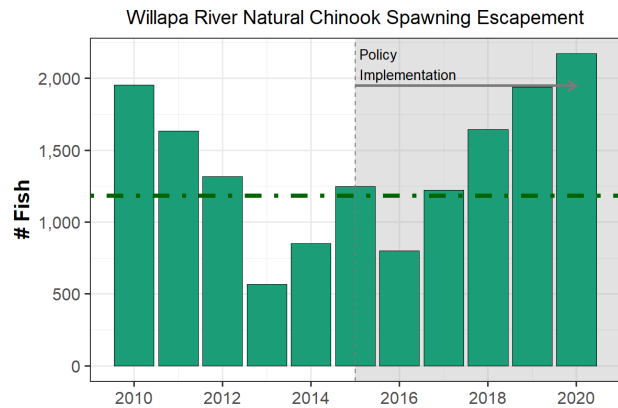
Control stream

- Allows for evaluation of hatchery management effects (BACI)

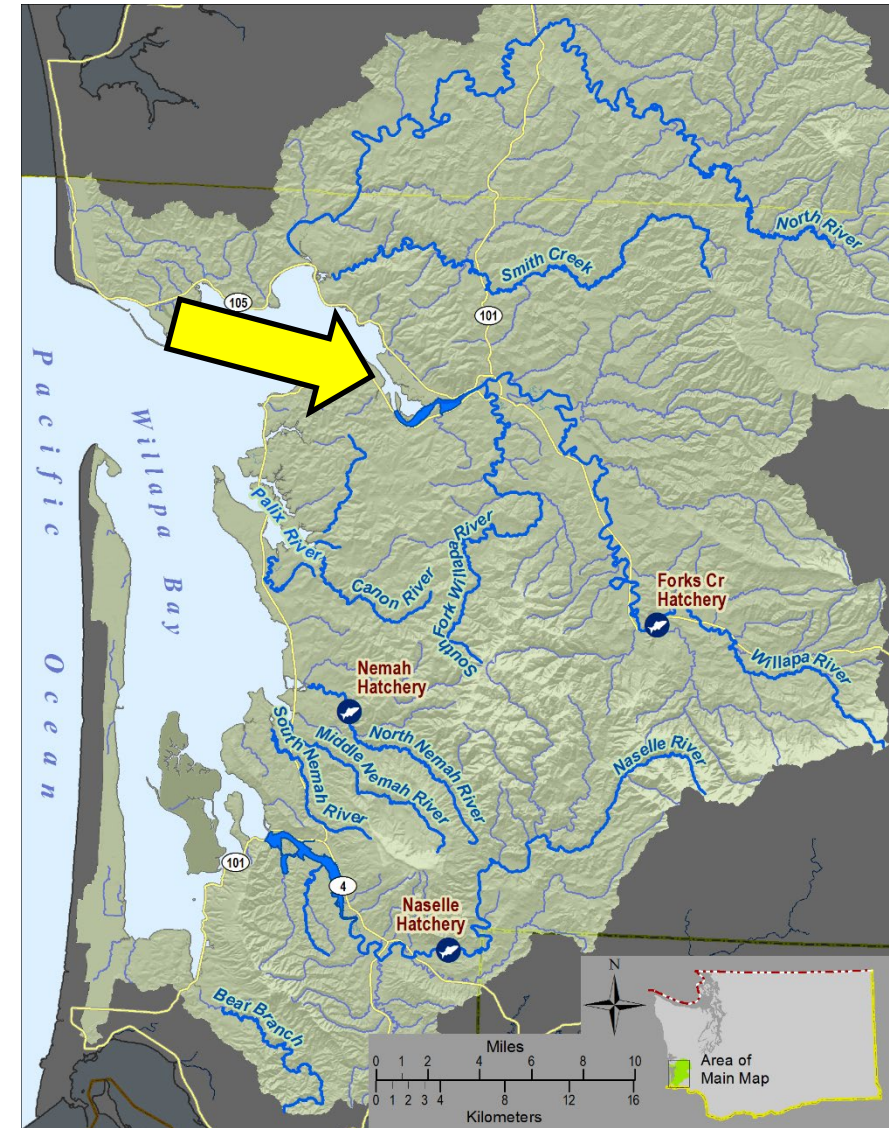


Harvest Rates

- Management should be flexible for stocks achieving the management objectives
- Consistency over time + Pre-season Forecasts



- Example: Willapa River meeting escapement since 2017



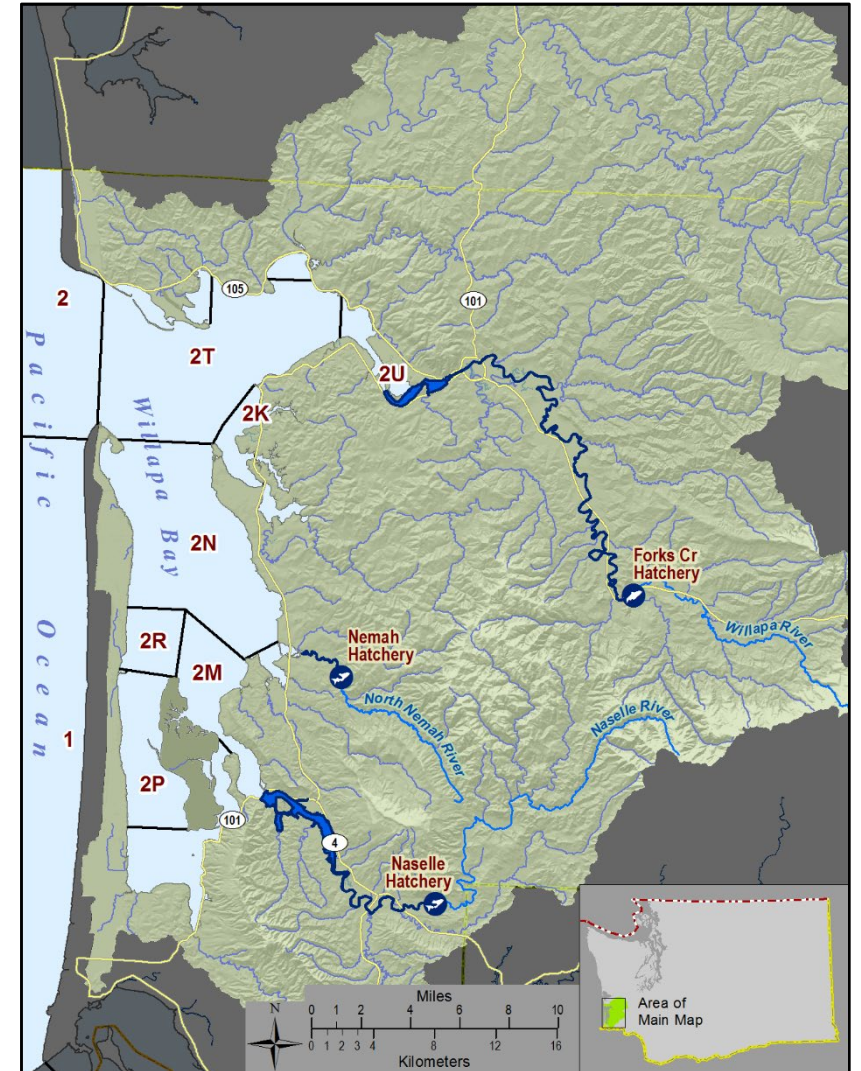
Fisheries Management: Time & Area

Species-specific harvest priorities for commercial and recreational fleet remain unchanged.

- Reserve best time and area for a full recreational fishery

Allow Chinook impacts to commercial fishery in 2N, 2M, 2P, 2R before Sept. 7

- Inform in-season update models
- Hatchery surplus SRO production



Revision Calendar

Date	Event	Purpose
October 21-23, 2021	Fish Committee	Provide markup draft of revisions to Policy
November 19, 2021	Fish Committee	Hear Fish Committee feedback on markup version
December 2-4, 2021	Fish Committee & FWC Commission	Briefing for Fish Committee meeting and full Commission (if approved-send out for public comment)
Mid-December 2021	Public Meeting	Take public comments on draft revisions
January 2022	FWC Commission	Brief Commission on public comment and ask for decision





Questions