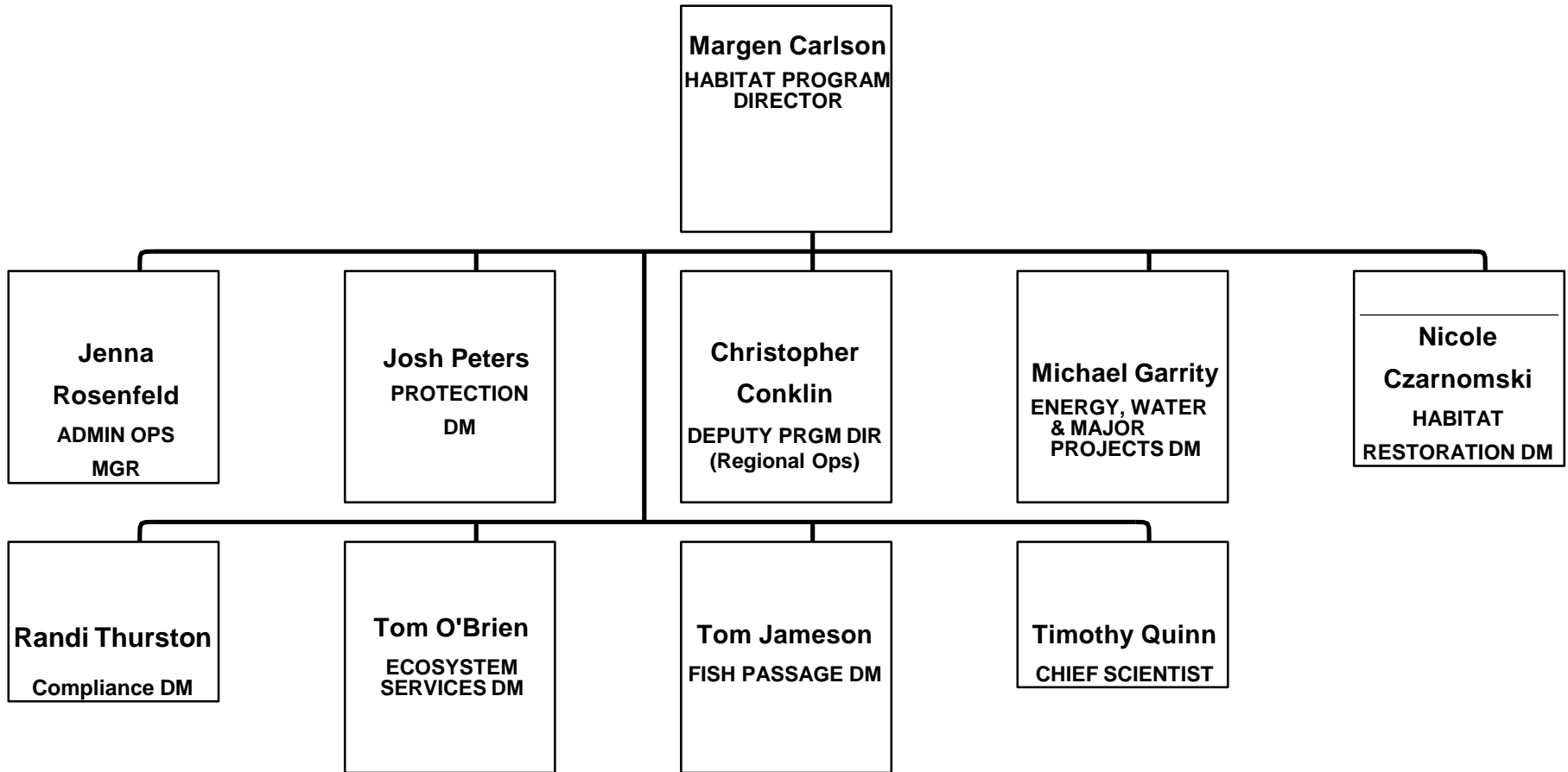
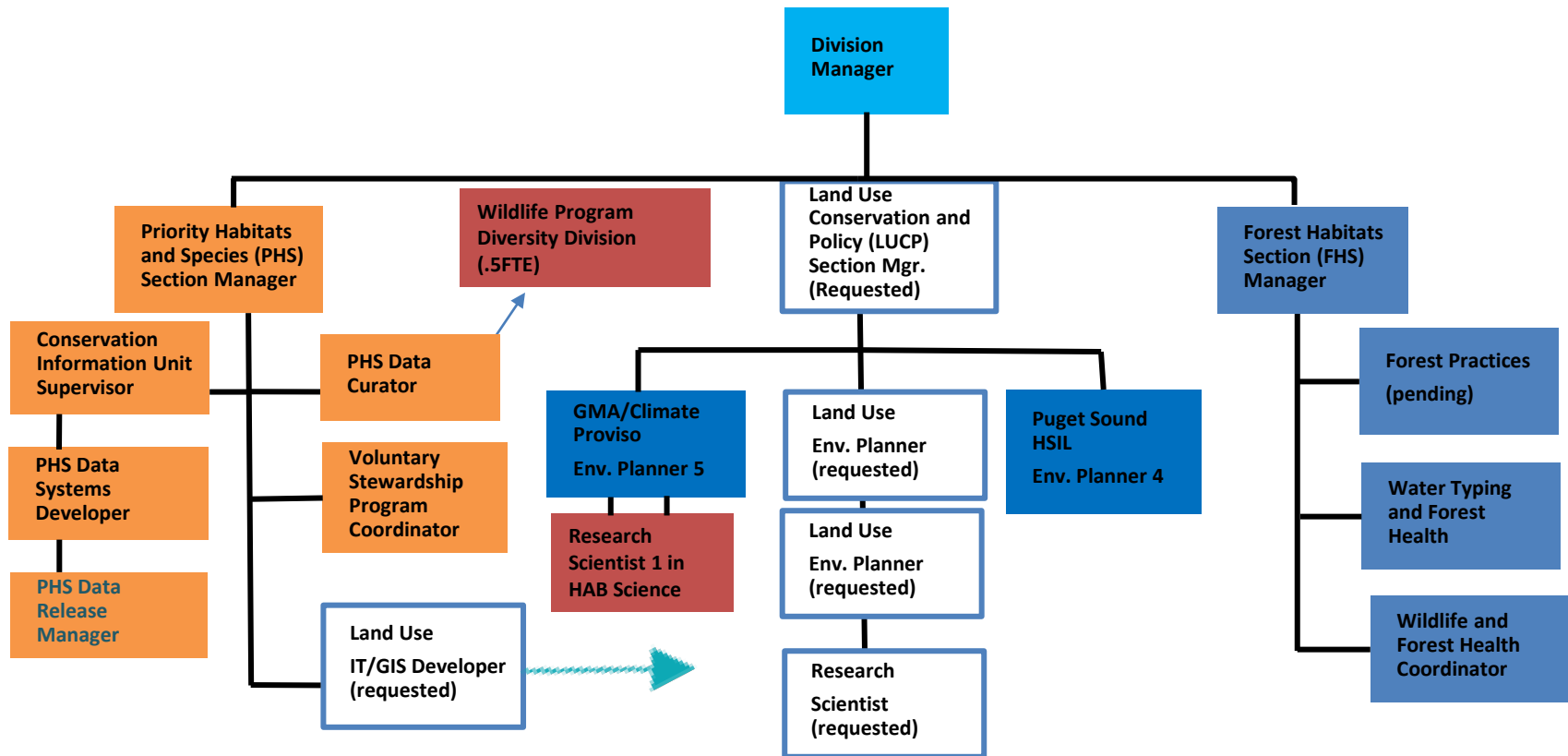


Habitat Program Organization



Ecosystem Services Division



Ecosystem Services Division

The Ecosystem Services Division collects, assembles, and provides data, training, and support to programs, individuals, and entities within and outside of WDFW, helping to inform best available science, management recommendations, and policy development, to protect and restore fish and wildlife species and their habitats.



Key Target Audiences

1. Local governments (counties/cities/towns)
The state has three major laws related to land use planning
 - A. Growth Management Act (GMA)
 - B. Voluntary Stewardship Program (VSP)
 - C. Shoreline Management Act (SMA)
2. Other Agencies, WDFW Programs, Landowners, Project Reviewers, Proponents, and Opponents
3. WDFW Regional Habitat Biologists
 - A. Deliver Technical Assistance to local governments
 - B. Review Project Proposals at the local level





Ecosystem Services Division

Tom O'Brien, Division Manager

Highest Priorities:

- Salmon recovery
- Land Use and Local Jurisdictions
- Habitat and Species Resiliency and Response to Climate Impacts
- Relations with Tribal co-managers
- ESD Staff Capacity and Well-being



Priority Habitats and Species (PHS) Section

Mary Huff
PHS Section Manager



PHS Basics



- PHS is called out in two statutes (GMA, EFSEC) as a source of “Best Available Science” that must be considered in land use planning decisions
- The PHS List includes individual (and some groups of) species, as well as habitats; it drives the rest of our work



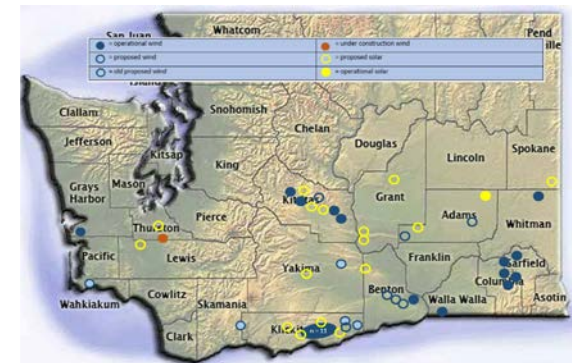
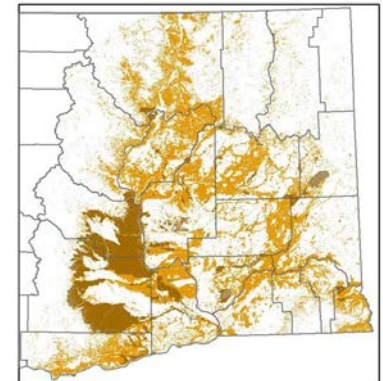
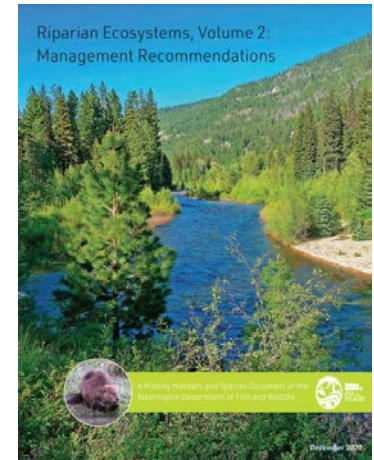
PHS Section Priorities:

- Update content and modernize delivery of data-driven maps and written Management recommendations
 - Increased integration with Wildlife & Fish Program information
- Voluntary Stewardship Program (VSP) implementation
- USFWS pass-through grants for local Habitat Conservation Plan (HCP) development



Current/Upcoming Projects

- Continuing rollout of *PHS Riparian Ecosystems, Volume 2: Management Recommendations*
- Updating shrubsteppe/Eastside steppe habitat layer in PHS on the Web
- Ferruginous hawk – new spatial data layer and Management Recommendations
- Support to other Habitat Program and Wildlife Program divisions in developing an alternative **energy siting** “toolbox”



Land Use Conservation and Policy (LUCP) Section

Currently Managed by ESD Division Manager



LUCP Section Priorities:

Influencing local planning processes to support WDFW's interests:

- Climate Resiliency and Adaption,
- Puget Sound Recovery Goals; and
- Land use planning in general:
 - GMA requirements [Comprehensive Plan and Critical Area Ordinance (CAO) updates]
 - SMA requirements [Shoreline Master Program (SMP) Updates]



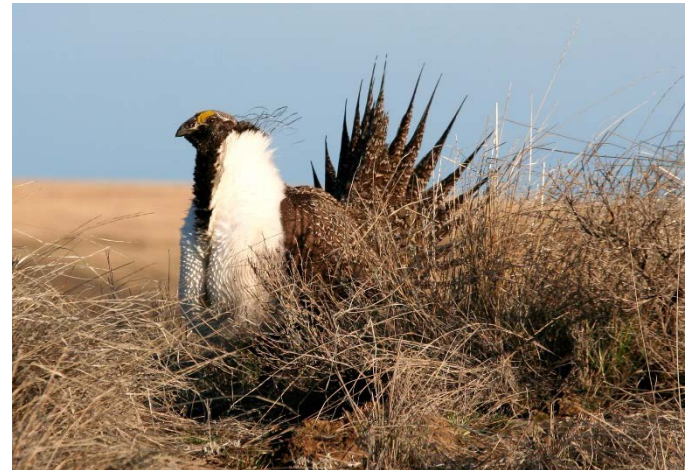
Growth Management Act (GMA)

- Adopted in 1990 to guide planning for growth and development
- Key provisions:
 - Comprehensive Plans
 - Designating and protecting resource lands and critical areas
 - Development regulations (includes Critical Areas Ordinances, or CAOs)
 - Urban growth areas (UGAs)



Five Types of Critical Areas

1. Wetlands (also a type of FWHCA)
2. Critical Aquifer Recharge Areas (CARAs)
- 3. Fish & Wildlife Habitat Conservation Areas (FWHCAs)**
4. Frequently Flooded Areas (FFAs)
5. Geologically Hazardous Areas (GHAs)



Shoreline Management Act (SMA)



Where SMA applies:

- Marine waters
- Lakes >20 acres
- Larger streams (>20 cfs mean annual flow)
- "Shorelands" 200' landward from Ordinary High-Water Mark
- Associated wetlands



Forest Habitats Section (FHS)

Darric Lowery (arrival pending)
FHS Section Manager



Forest Habitats Section Priorities:

- Forest Health
 - Forest Habitat Values on all Lands
 - Forest Health and Fire Resiliency
 - Landscape Scale Planning for Species Conservation
 - Forest Landowner Safe Harbor Agreements

- Forest Practices
 - Adaptive Management Program
 - Hydraulic Project Impacts
 - Regional Habitat Staff Training
 - Water Typing and Riparian Habitats
 - Scientific Advisory Groups



Thank you!

- Margen Carlson, Habitat Program Director (plate juggler)
- Tom O'Brien, Ecosystem Services Division Manager (the new guy)
- Mary Huff, Priority Habitat and Species Section Manager (and resident expert on GMA, SMA, VSP)

