

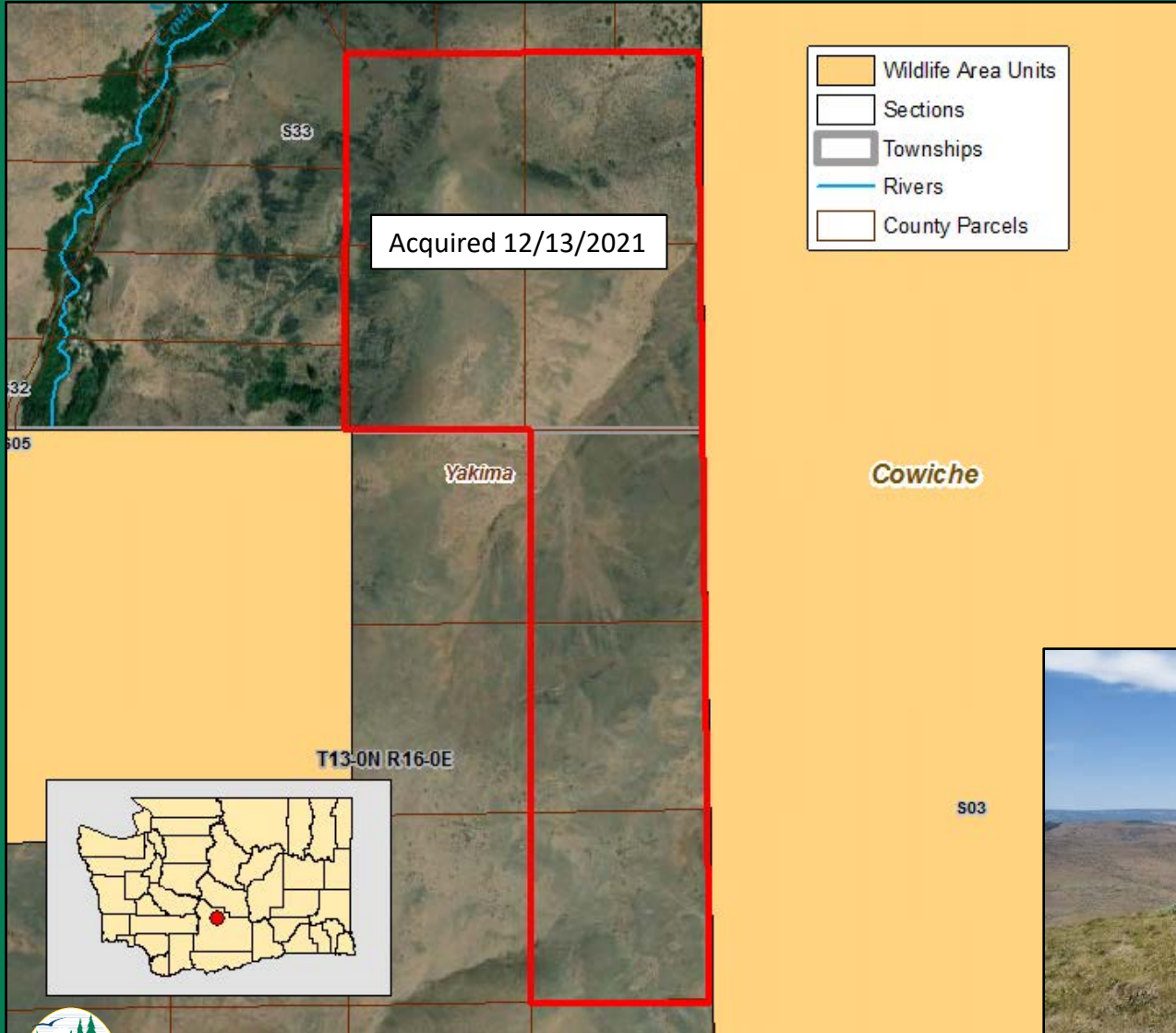
4. Land Transactions

Karen Edwards
Real Estate Manager, Wildlife Program



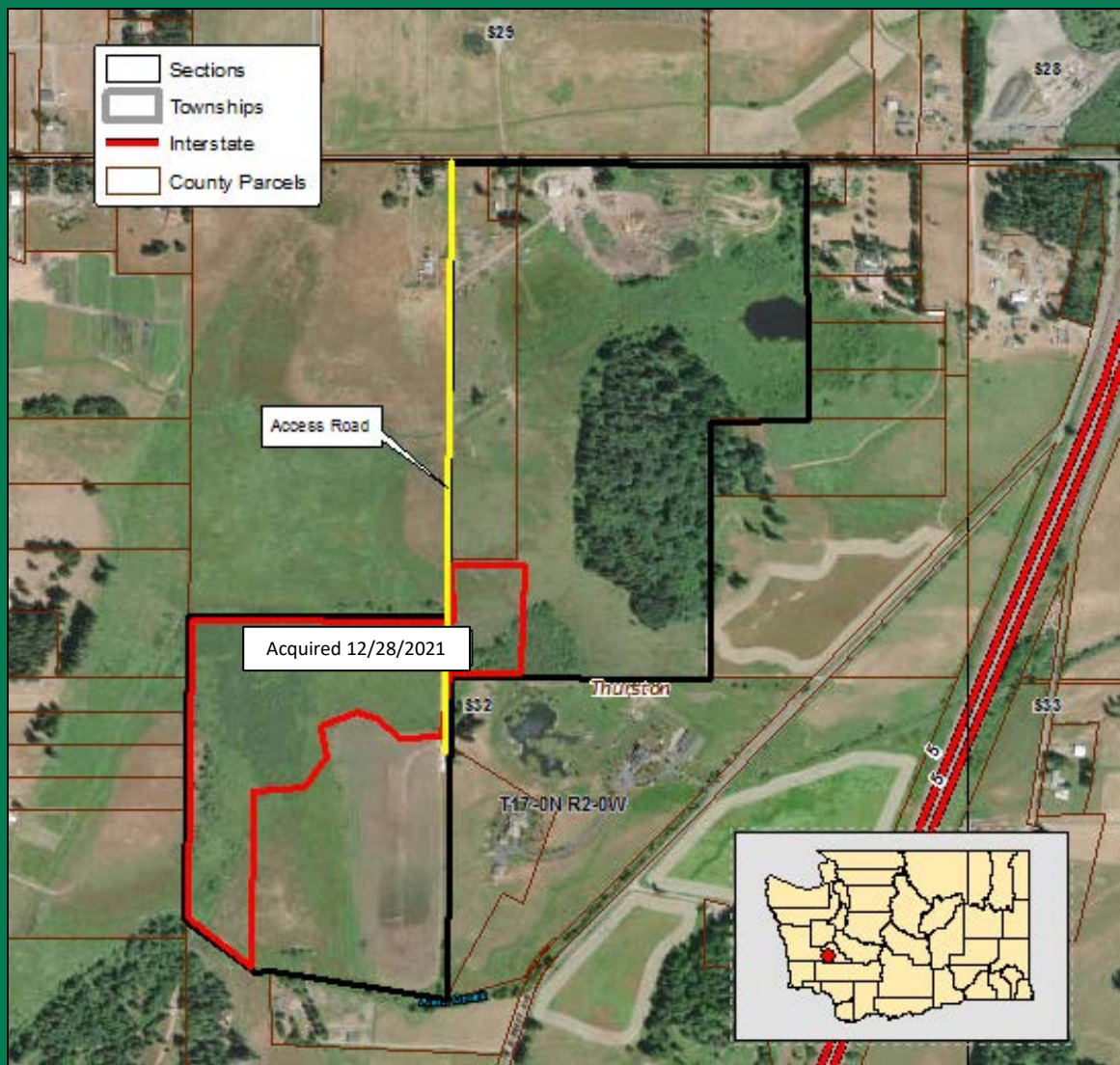
Acquisition - Cowiche Watershed

290(+/-) Acres - Yakima County



Conservation Easement – Oregon Spotted Frog

34 (+/-) Acres - Thurston County



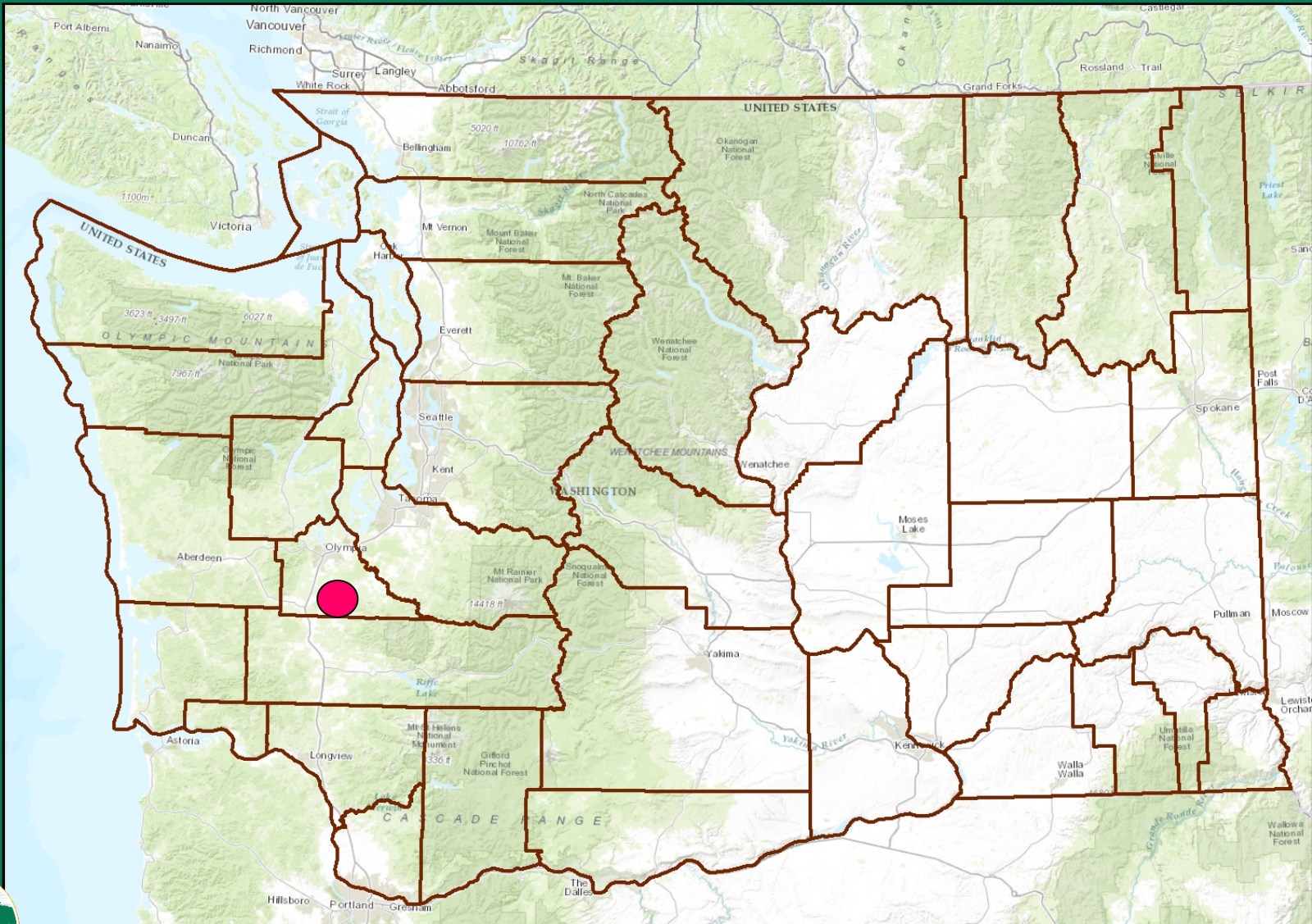
4. Land Transactions

Karen Edwards
Real Estate Manager, Wildlife Program

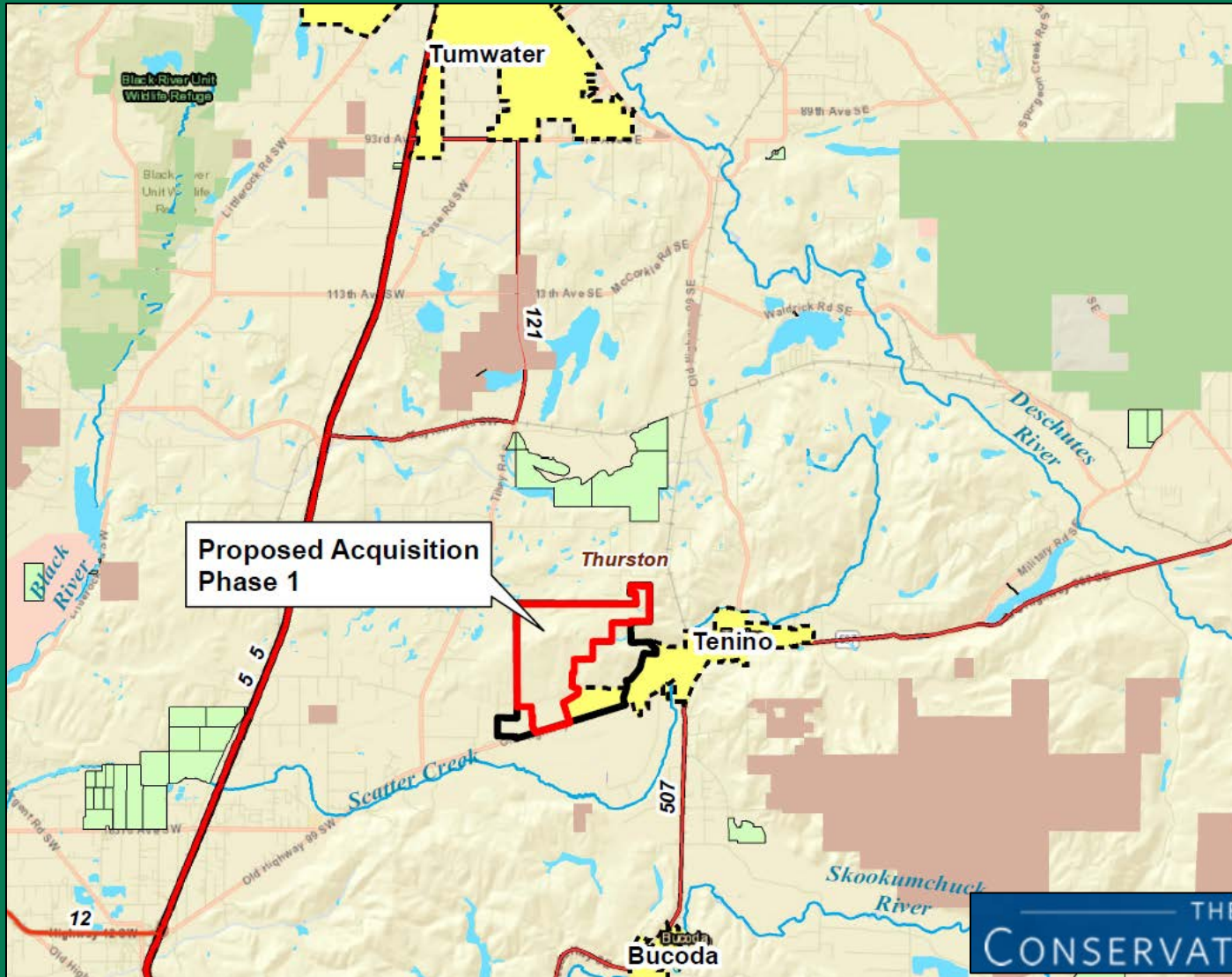


Proposed Acquisition – Violet Prairie

1,035(+/-) Acres - Thurston County



Proposed Acquisition – Violet Prairie 1,035(+/-) Acres - Thurston County

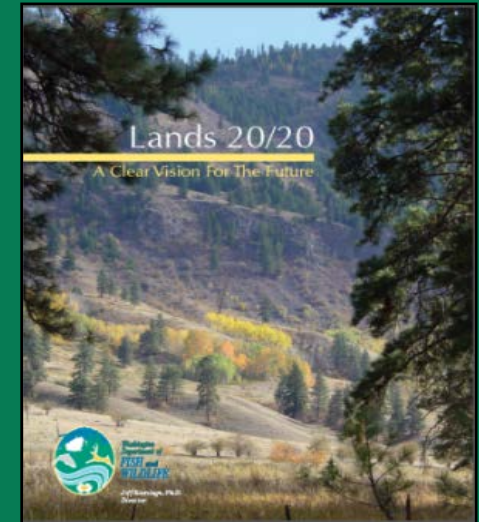
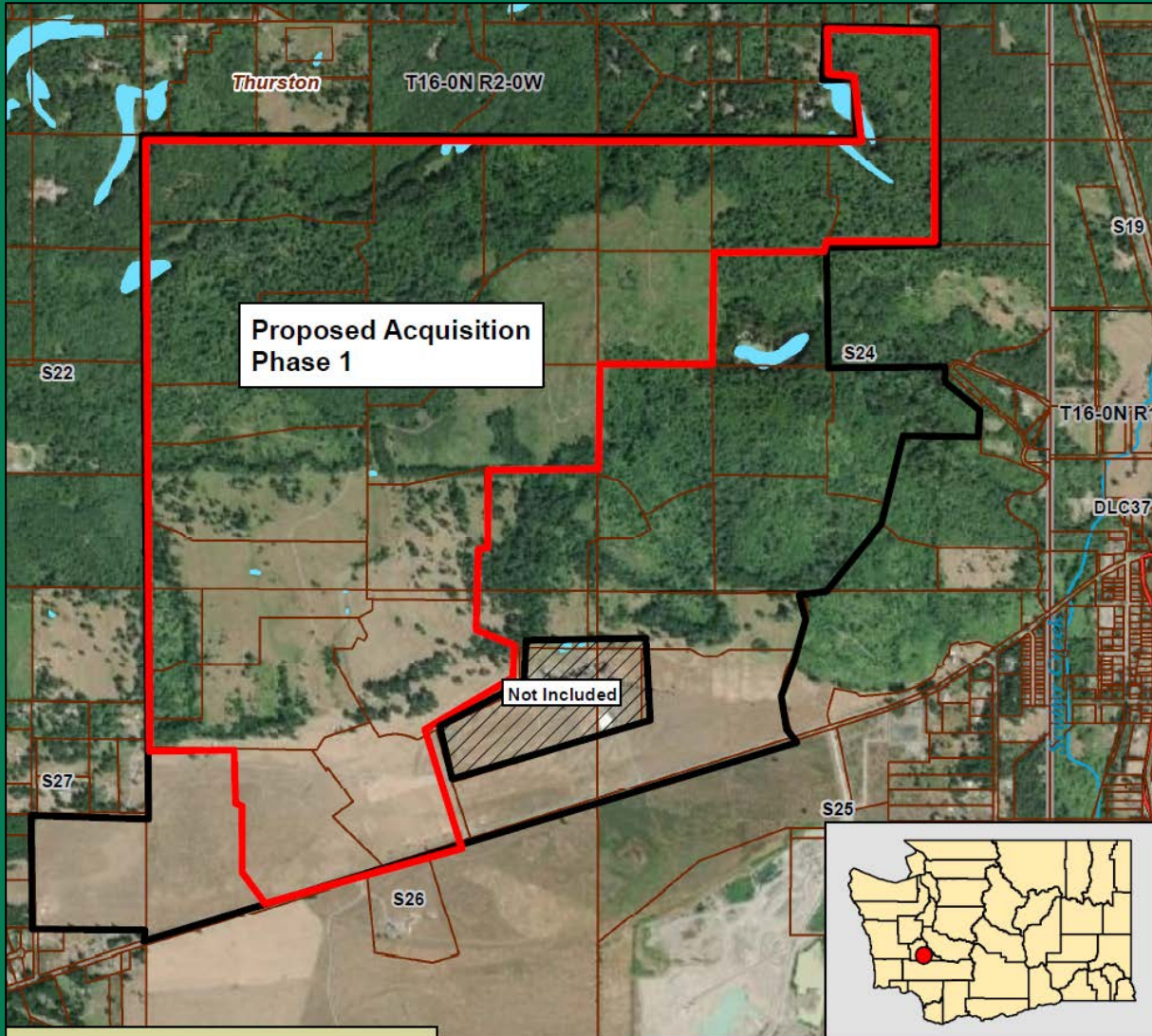


THE
CONSERVATION FUND



Proposed Acquisition – Violet Prairie

1,035(+/-) Acres - Thurston County



Appraised Value \$7,775,707



Proposed Acquisition – Violet Prairie 1,035(+/-) Acres - Thurston County



Mardon skipper



Taylor's Checkerspot



Elk



Mazama pocket gopher

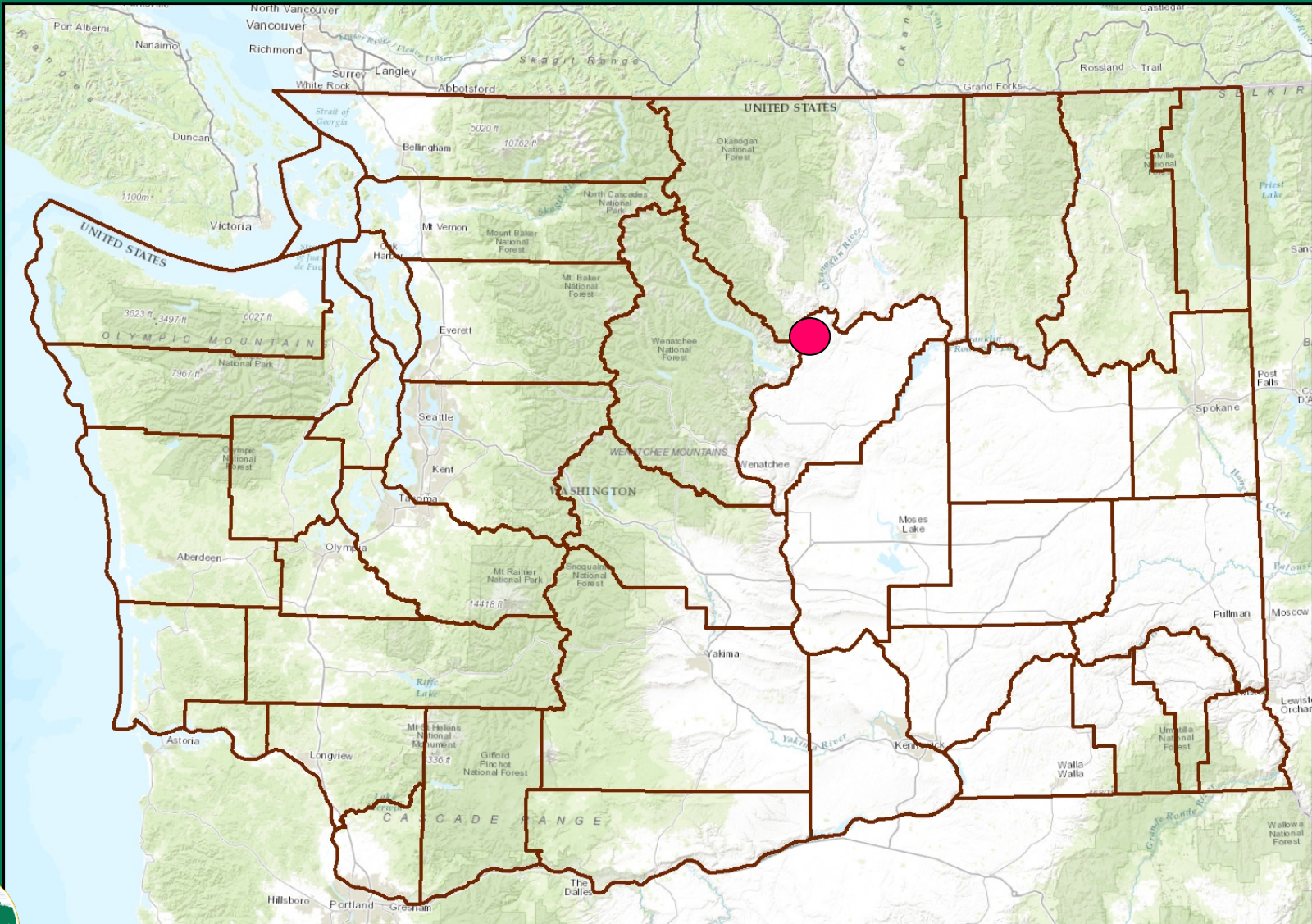


Puget Blue



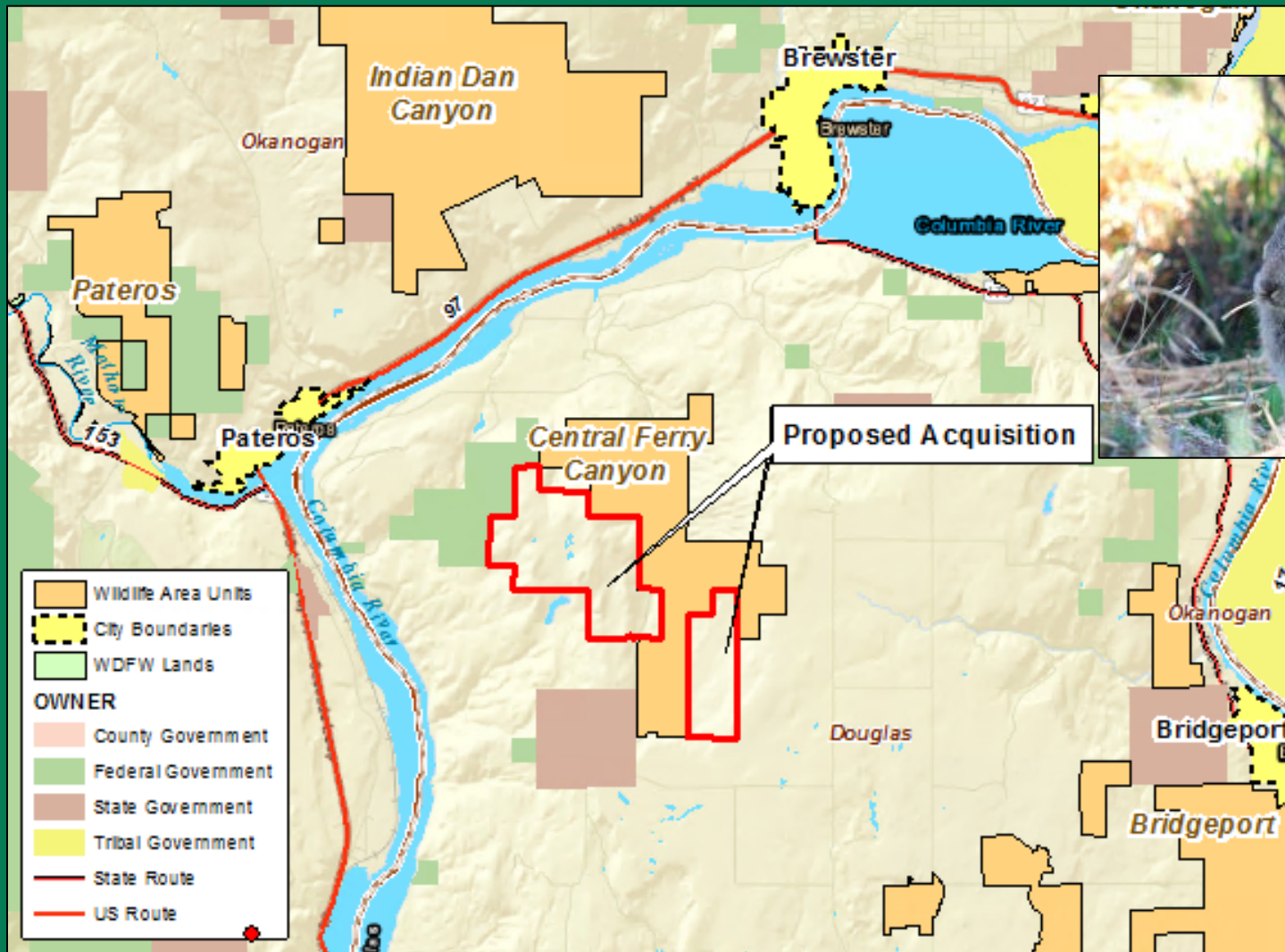
Proposed Acquisition – Central Ferry Canyon

1,513(+/-) Acres - Douglas County



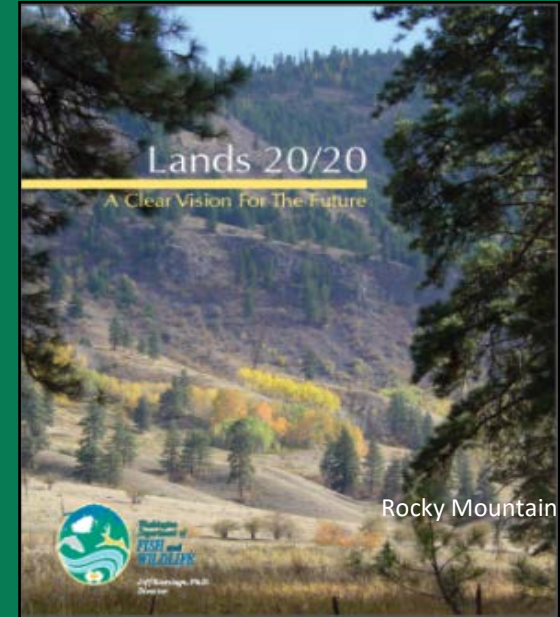
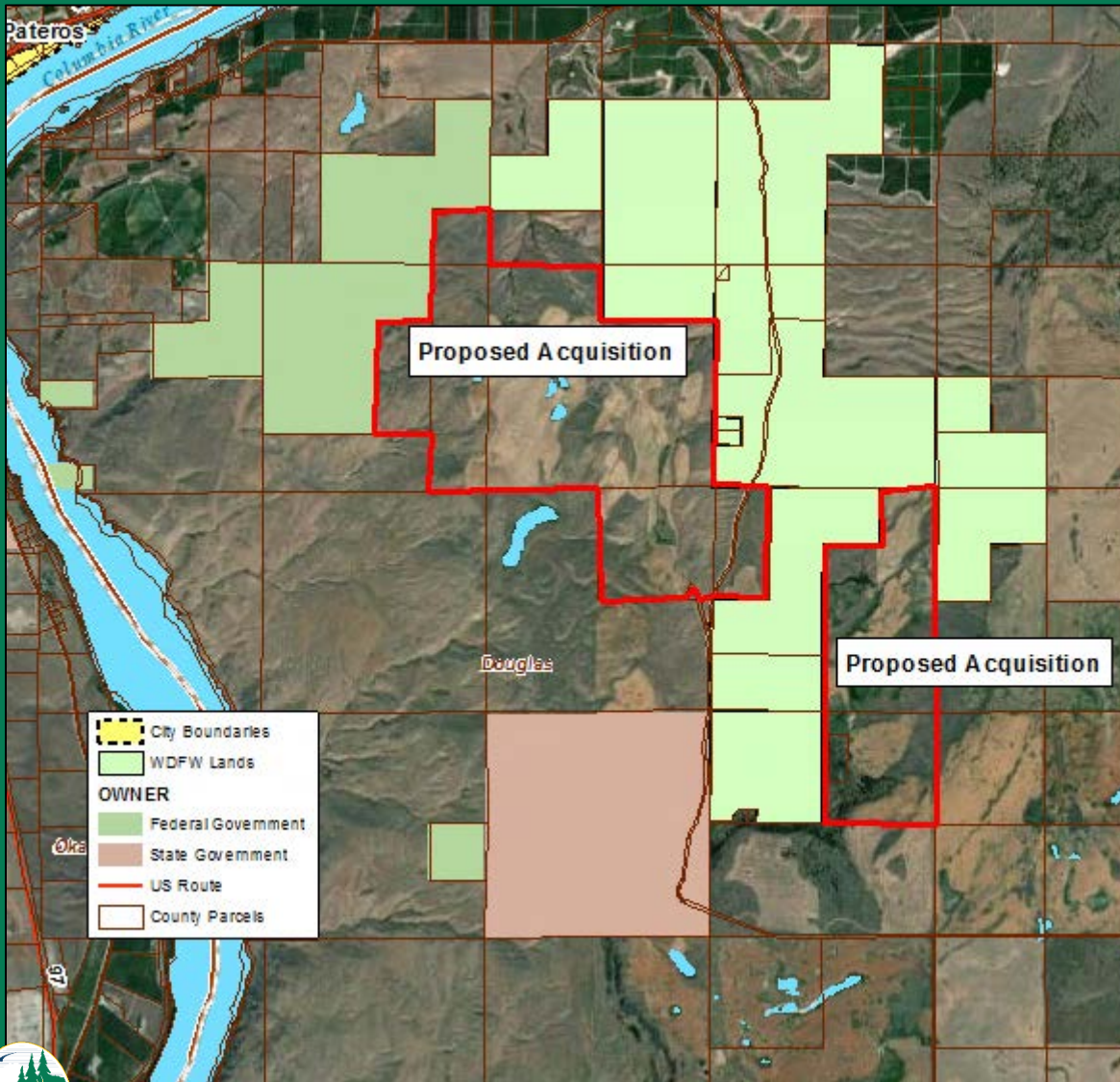
Proposed Acquisition – Central Ferry Canyon

1,513(+/-) Acres - Douglas County



Proposed Acquisition – Central Ferry Canyon

1,513(+/-) Acres - Douglas County



Appraised Value \$580,000



Proposed Acquisition – Central Ferry Canyon

1,513(+/-) Acres - Douglas County



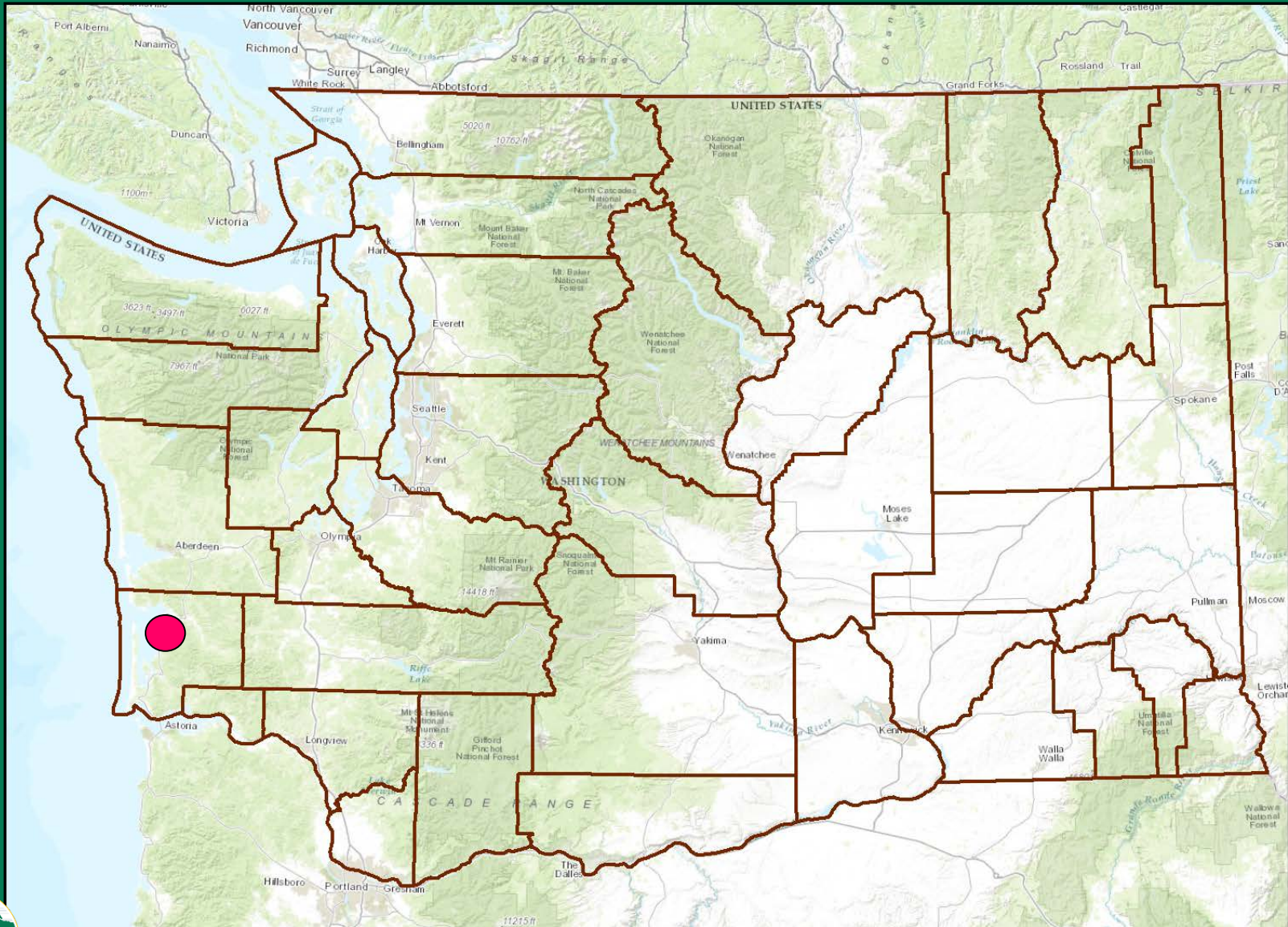
Columbian Sharptailed Grouse



Tochee



Proposed Acquisition – Nemah Access 94(+/-) Acres - Pacific County



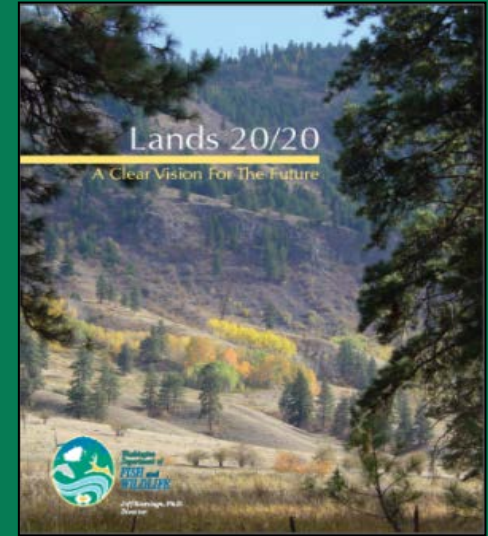
Proposed Acquisition – Nemah Access

94(+/-) Acres - Pacific County



Proposed Acquisition – Nemah Access

94(+/-) Acres - Pacific County

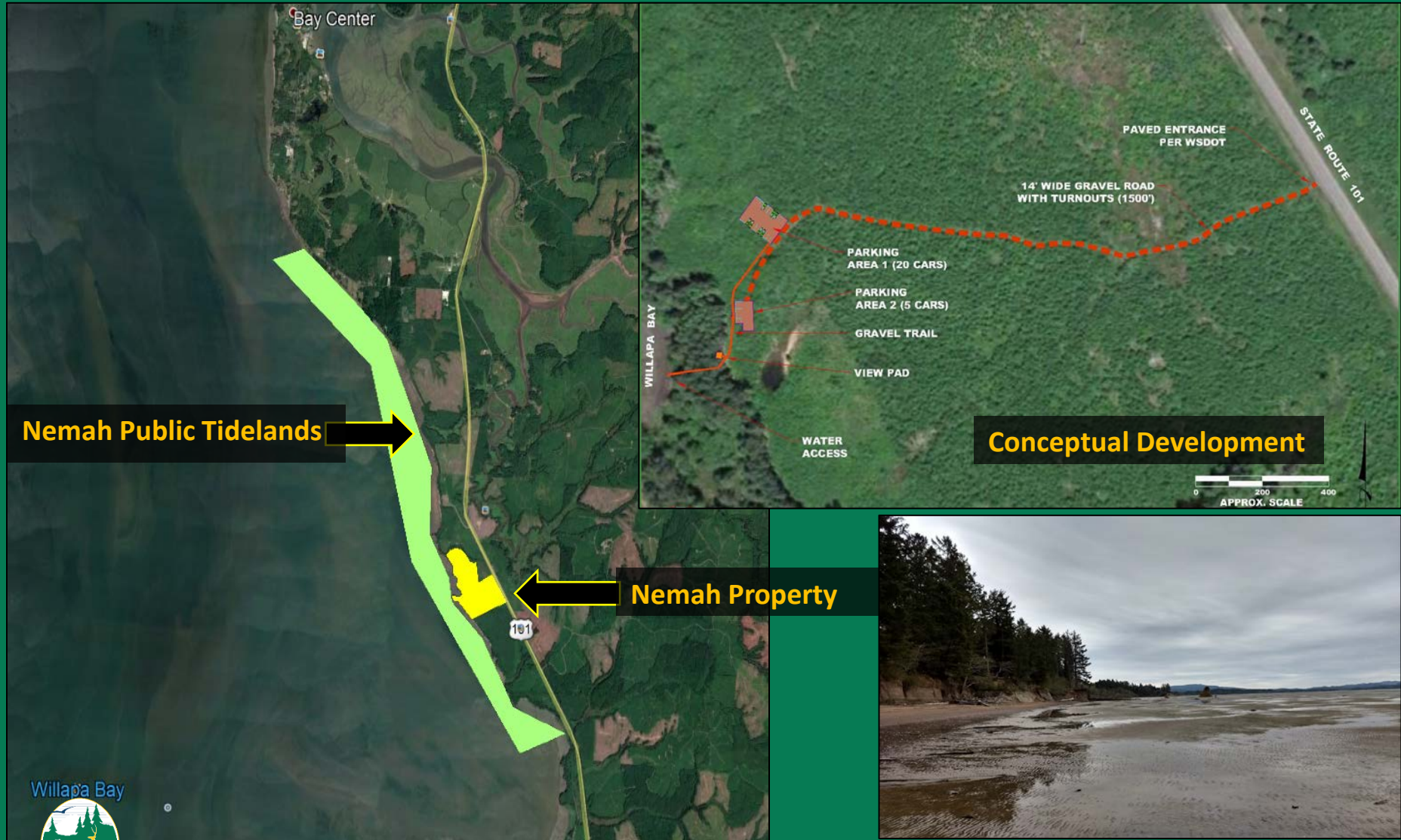


Appraised Value \$564,000

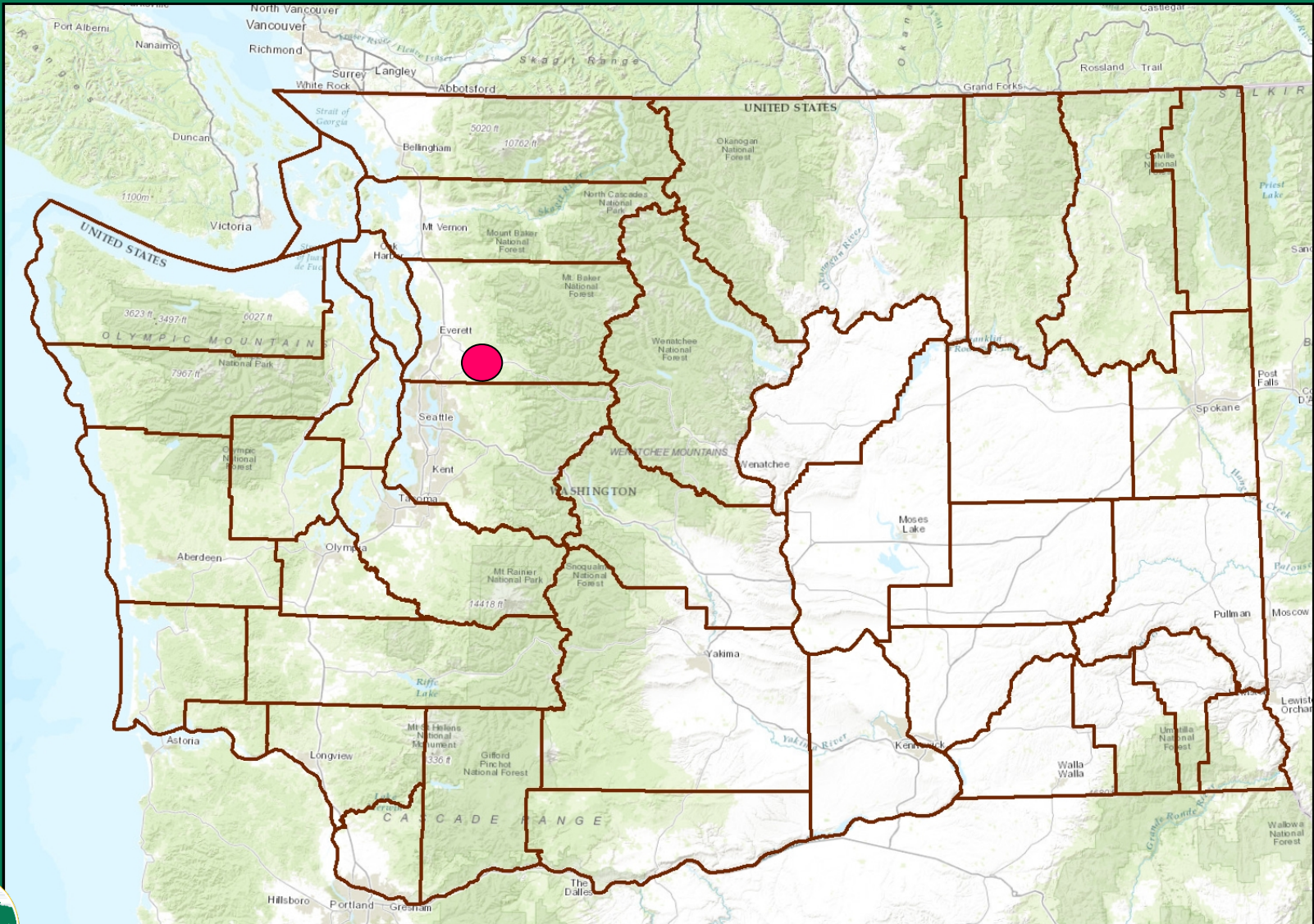


Proposed Acquisition – Nemah Access

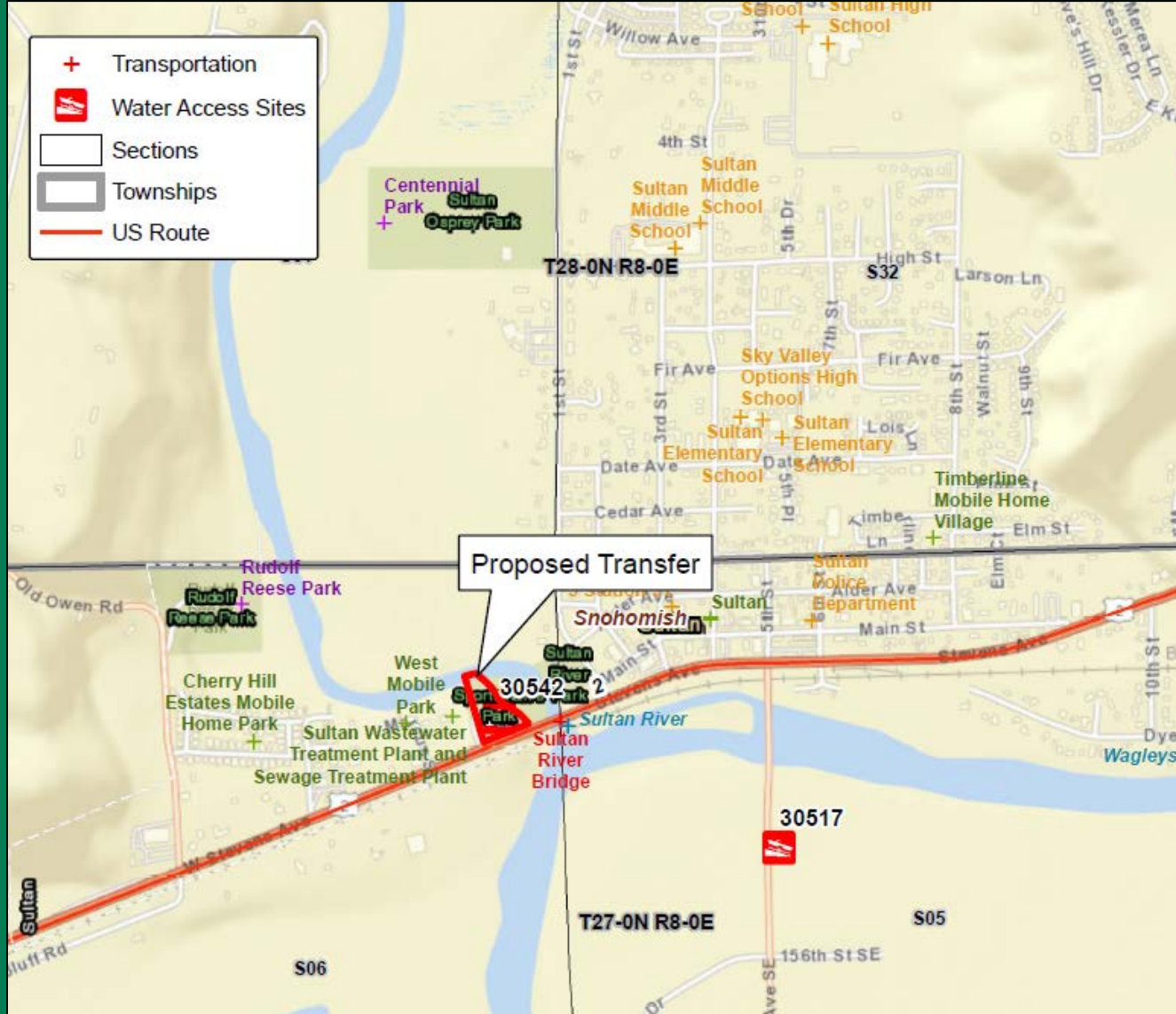
94(+/-) Acres - Pacific County



Proposed Transfer – Sportsman’s Park to the City of Sultan 3.5(+/-) Acres - Snohomish County



Proposed Transfer – Sportsman’s Park to the City of Sultan 3.5(+/-) Acres - Snohomish County



Proposed Transfer – Sportsman’s Park to the City of Sultan 3.5(+/-) Acres - Snohomish County



A photograph of a riverbank. In the foreground, a large pile of clams sits on the wet sand. The river flows in the middle ground, reflecting the sky and the forest. The background is a dense forest of evergreen trees under a cloudy sky.

Questions?