

501 Portway Avenue, Suite 101  
Hood River, OR 97031  
541.386.9003  
www.interfluve.com

WASHINGTON STATE  
DEPARTMENT OF FISH AND WILDLIFE

SYM	DATE	REVISION DESCRIPTION	BY
APPROVED AND RELEASED FOR CONSTRUCTION			
CHIEF ENGINEER .....		DATE: .....	DESIGNED BY: JG, PB
PROGRAM .....		DATE: 1/27/22	CHECKED BY: JG
			DRAWN BY: NS, DF

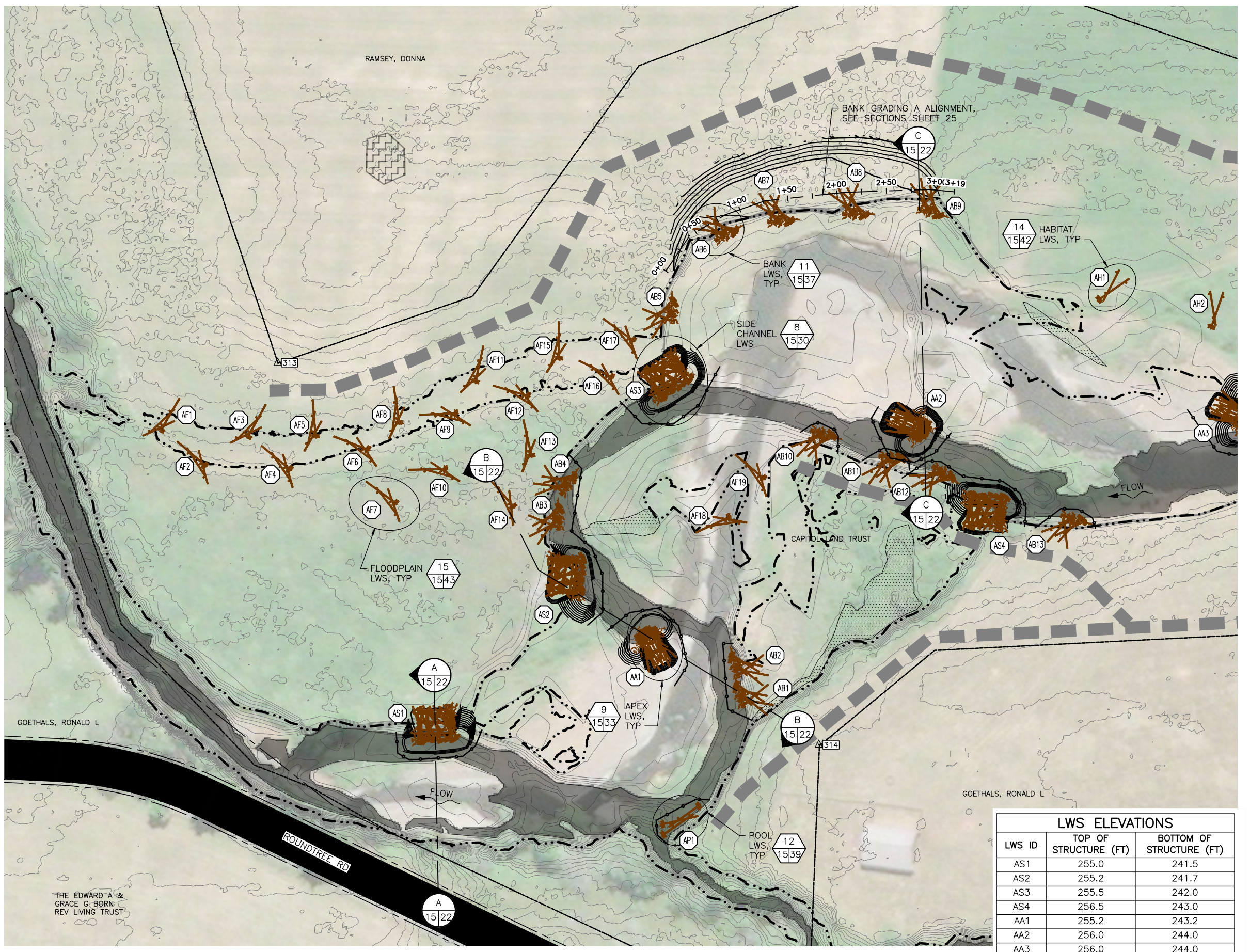
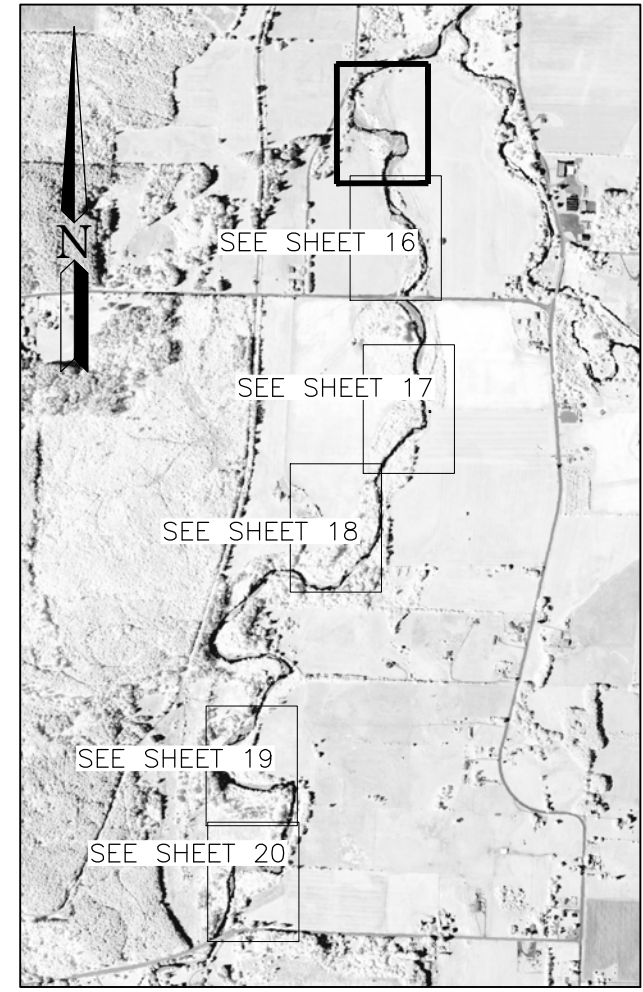
0 — 1"  
BAR MEASURES  
ONE INCH ON  
ORIGINAL DRAWINGS

STILLMAN CREEK  
CHEHALIS BASIN EAR RESTORATION  
VICINITY MAP

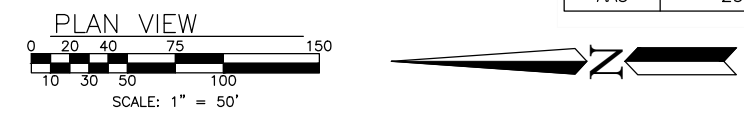
DISCIPLINE SHEET #	
GO.1	
PROJECT NO. LS:231001:2019-1	
SHEET	OF
2	52

- LEGEND**
- EXISTING CONTOURS (2FT)
  - PROPOSED CONTOURS (1FT)
  - TAXLOTS
  - ORDINARY HIGH WATER
  - LIMITS OF DISTURBANCE
  - PROPOSED SIDE CHANNEL WITH 100-FT STATION INCREMENTS
  - TEMPORARY ACCESS ROUTE
  - EXISTING WETLAND
  - LOW-FLOW CHANNEL
  - RESTRICTED ACCESS AREA
  - COFFERDAM OR TURBIDITY CURTAIN (NOTE 1)

- NOTES**
1. LOCATIONS OF COFFERDAMS AND TURBIDITY CURTAINS ARE APPROXIMATE. ACTUAL LOCATION, EXTENT, AND TYPE OF WORK AREA ISOLATION SHALL BE DETERMINED DURING CONSTRUCTION. PRIOR TO STARTING WORK THE CONTRACTOR SHALL SUBMIT A STREAM DIVERSION AND DEWATERING PLAN TO THE WDFW PROJECT MANAGER FOR APPROVAL.
  2. STAGING MAY OCCUR ALONG THE MARGINS OF ACCESS ROUTES. TOTAL WIDTH OF ACCESS ROUTE AND STAGING SHALL BE APPROVED BY THE WDFW PROJECT MANAGER BEFORE BEING UTILIZED.



LWS ELEVATIONS		
LWS ID	TOP OF STRUCTURE (FT)	BOTTOM OF STRUCTURE (FT)
AS1	255.0	241.5
AS2	255.2	241.7
AS3	255.5	242.0
AS4	256.5	243.0
AA1	255.2	243.2
AA2	256.0	244.0
AA3	256.0	244.0



**WASHINGTON STATE**  
**DEPARTMENT OF FISH AND WILDLIFE**

SYM	DATE	REVISION DESCRIPTION	BY
APPROVED AND RELEASED FOR CONSTRUCTION			
CHIEF ENGINEER		DATE:	
PROGRAM		DATE:	

**STILLMAN CREEK**  
**CHEHALIS BASIN EAR RESTORATION**  
PROPOSED CONDITIONS PLAN (1 OF 6)

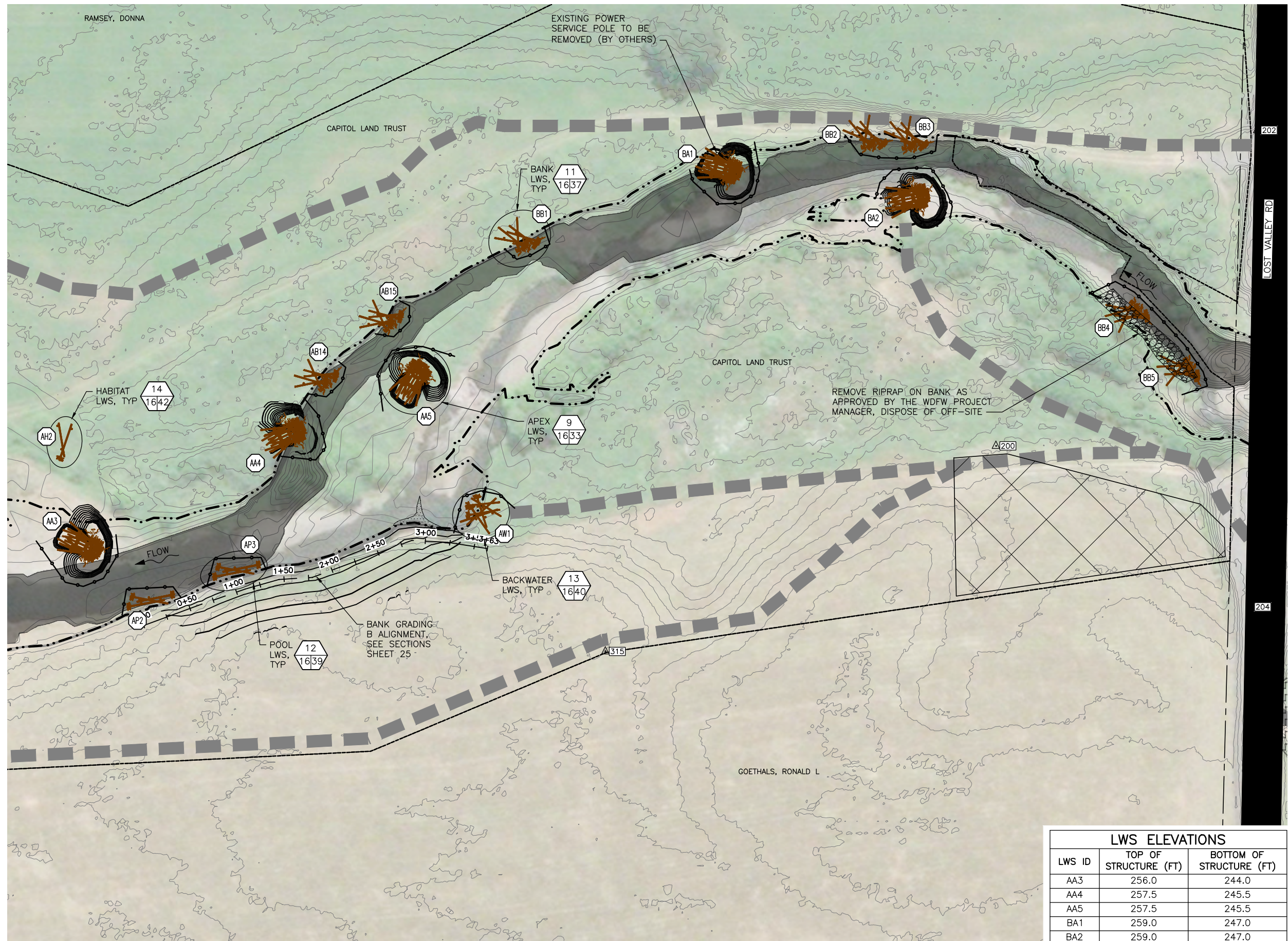
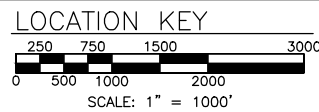
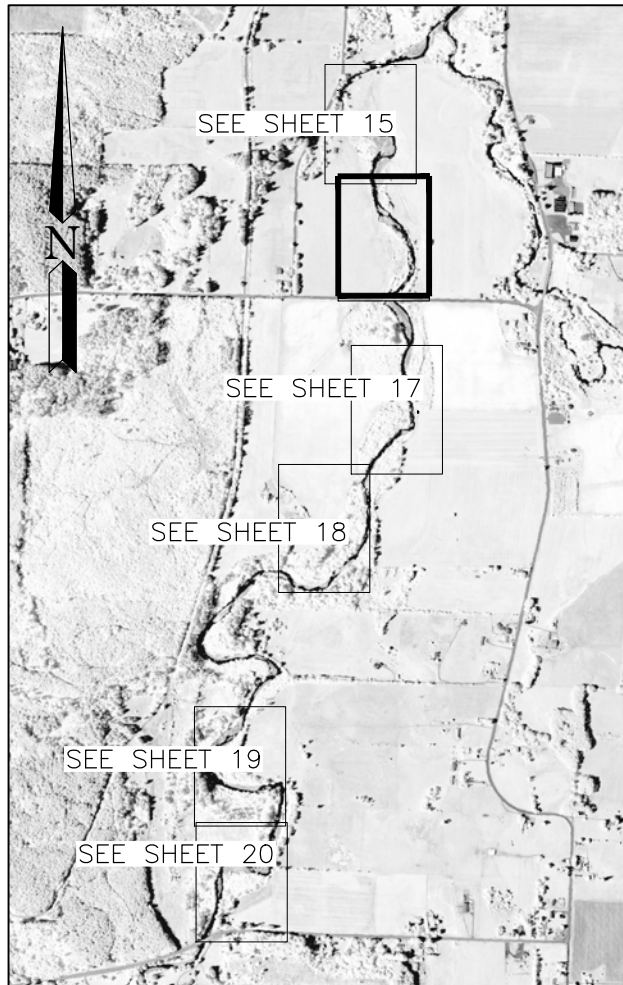
DISCIPLINE SHEET #  
**C0.8**  
PROJECT NO.  
LS:231001:2019-1  
SHEET 15 OF 52

**LEGEND**

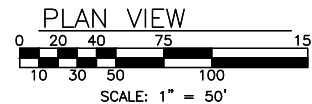
- EXISTING CONTOURS (2FT)
- PROPOSED CONTOURS (1FT)
- TAXLOTS
- ORDINARY HIGH WATER
- LIMITS OF DISTURBANCE
- PROPOSED SIDE CHANNEL WITH 100-FT STATION INCREMENTS
- TEMPORARY ACCESS ROUTE
- EXISTING WETLAND
- LOW-FLOW CHANNEL
- RESTRICTED ACCESS AREA
- COFFERDAM OR TURBIDITY CURTAIN (NOTE 1)

**NOTES**

1. LOCATIONS OF COFFERDAMS AND TURBIDITY CURTAINS ARE APPROXIMATE. ACTUAL LOCATION, EXTENT, AND TYPE OF WORK AREA ISOLATION SHALL BE DETERMINED DURING CONSTRUCTION. PRIOR TO STARTING WORK THE CONTRACTOR SHALL SUBMIT A STREAM DIVERSION AND DEWATERING PLAN TO THE WDFW PROJECT MANAGER FOR APPROVAL.
2. STAGING MAY OCCUR ALONG THE MARGINS OF ACCESS ROUTES. TOTAL WIDTH OF ACCESS ROUTE AND STAGING SHALL BE APPROVED BY THE WDFW PROJECT MANAGER BEFORE BEING UTILIZED.



LWS ELEVATIONS		
LWS ID	TOP OF STRUCTURE (FT)	BOTTOM OF STRUCTURE (FT)
AA3	256.0	244.0
AA4	257.5	245.5
AA5	257.5	245.5
BA1	259.0	247.0
BA2	259.0	247.0



DISCIPLINE SHEET #  
**C0.9**  
PROJECT NO.  
LS:231001:2019-1  
SHEET 16 OF 52



**WASHINGTON STATE**  
**DEPARTMENT OF FISH AND WILDLIFE**

SYM	DATE	REVISION DESCRIPTION	BY
<b>BID SET</b>			
APPROVED AND RELEASED FOR CONSTRUCTION			
CHIEF ENGINEER	DATE:	DESIGNED BY	JG, PB
PROGRAM	DATE:	CHECKED BY	JG
		DRAWN BY	NS, DF
		DATE	1/27/22

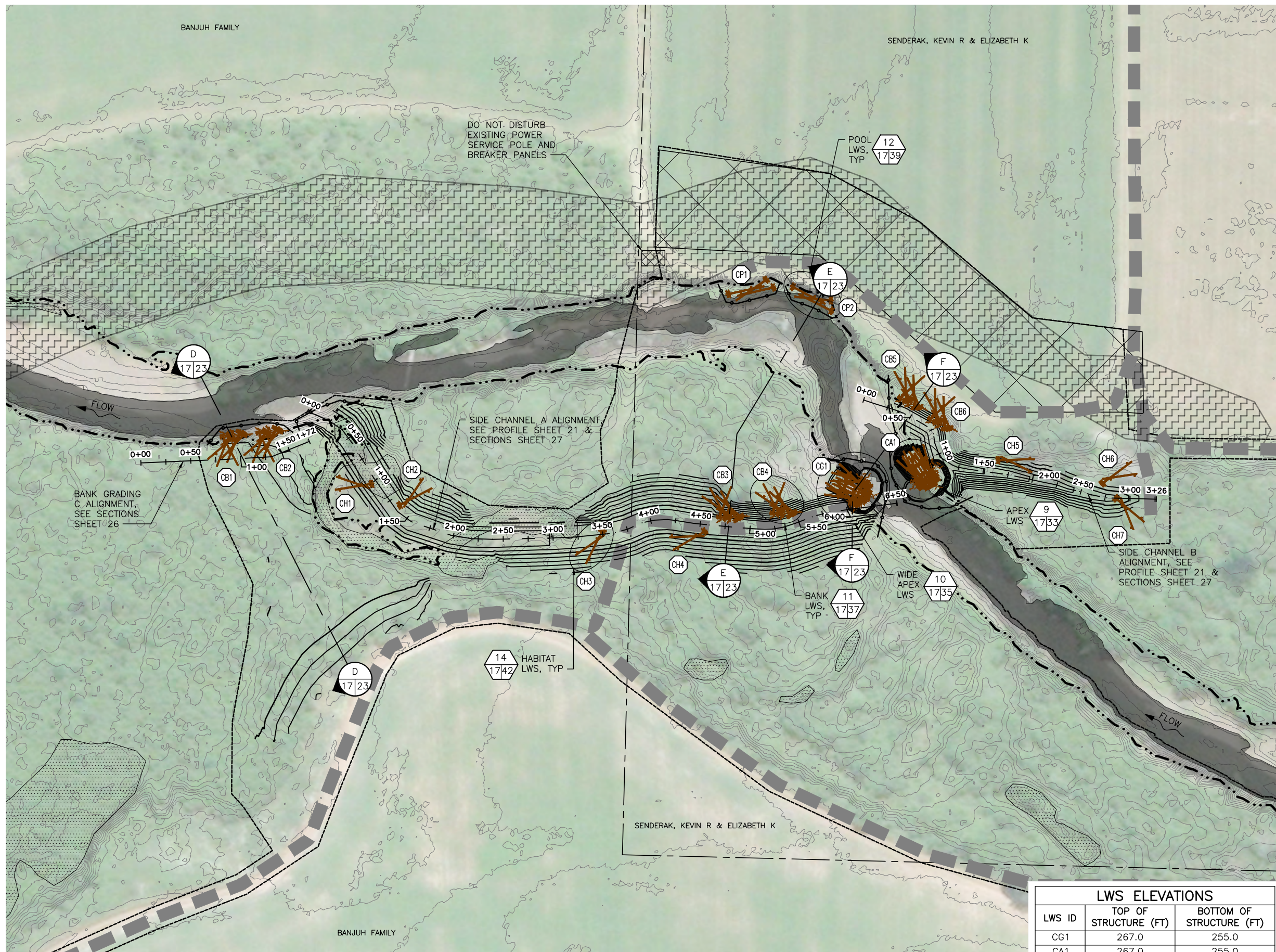
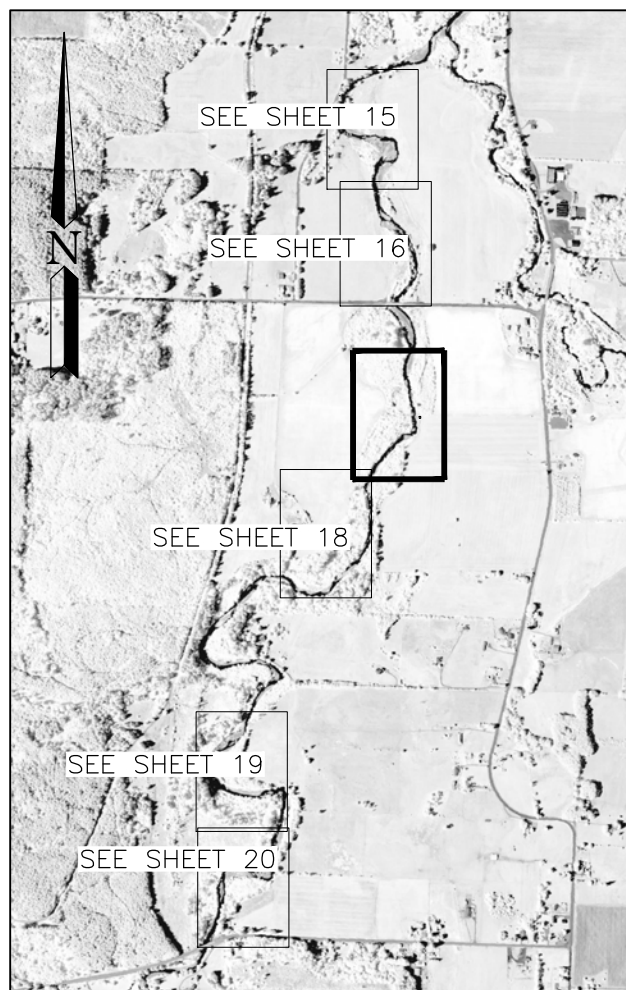
**STILLMAN CREEK**  
**CHEHALIS BASIN EAR RESTORATION**  
PROPOSED CONDITIONS PLAN (2 OF 6)

**LEGEND**

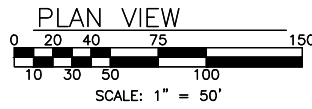
- EXISTING CONTOURS (2FT)
- PROPOSED CONTOURS (1FT)
- TAXLOTS
- ORDINARY HIGH WATER
- LIMITS OF DISTURBANCE
- PROPOSED SIDE CHANNEL WITH 100-FT STATION INCREMENTS
- TEMPORARY ACCESS ROUTE
- TEMPORARY STAGING AREA
- EXISTING WETLAND
- LOW-FLOW CHANNEL
- RESTRICTED ACCESS AREA
- COFFERDAM OR TURBIDITY CURTAIN (NOTE 1)

**NOTES**

1. LOCATIONS OF COFFERDAMS AND TURBIDITY CURTAINS ARE APPROXIMATE. ACTUAL LOCATION, EXTENT, AND TYPE OF WORK AREA ISOLATION SHALL BE DETERMINED DURING CONSTRUCTION. PRIOR TO STARTING WORK THE CONTRACTOR SHALL SUBMIT A STREAM DIVERSION AND DEWATERING PLAN TO THE WDFW PROJECT MANAGER FOR APPROVAL.
2. STAGING MAY OCCUR ALONG THE MARGINS OF ACCESS ROUTES. TOTAL WIDTH OF ACCESS ROUTE AND STAGING SHALL BE APPROVED BY THE WDFW PROJECT MANAGER BEFORE BEING UTILIZED.
3. MATERIAL EXCAVATED FROM THE RIGHT BANK (EAST SIDE) OF STILLMAN CREEK WITHIN THE SENDERAK PROPERTY SHALL REMAIN ON THE SENDERAK PROPERTY. MATERIAL SHALL BE STOCKPILED IN A LOCATION AND CONFIGURATION APPROVED BY THE WDFW PROJECT MANAGER.



LWS ELEVATIONS		
LWS ID	TOP OF STRUCTURE (FT)	BOTTOM OF STRUCTURE (FT)
CG1	267.0	255.0
CA1	267.0	255.0



DISCIPLINE SHEET #  
**CO.10**



**WASHINGTON STATE**  
**DEPARTMENT OF FISH AND WILDLIFE**



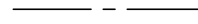


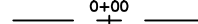

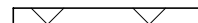
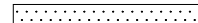


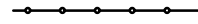
<b>BID SET</b>		0 1" BAR MEASURES ONE INCH ON ORIGINAL DRAWINGS	
SYM	DATE	REVISION DESCRIPTION	BY
APPROVED AND RELEASED FOR CONSTRUCTION			
CHIEF ENGINEER	DATE:	DESIGNED BY	JG, PB
PROGRAM	DATE:	CHECKED BY	JG
		DRAWN BY	NS, DF
		DATE	1/27/22

**STILLMAN CREEK**  
**CHEHALIS BASIN EAR RESTORATION**  
PROPOSED CONDITIONS PLAN (3 OF 6)

PROJECT NO.  
LS:231001:2019-1

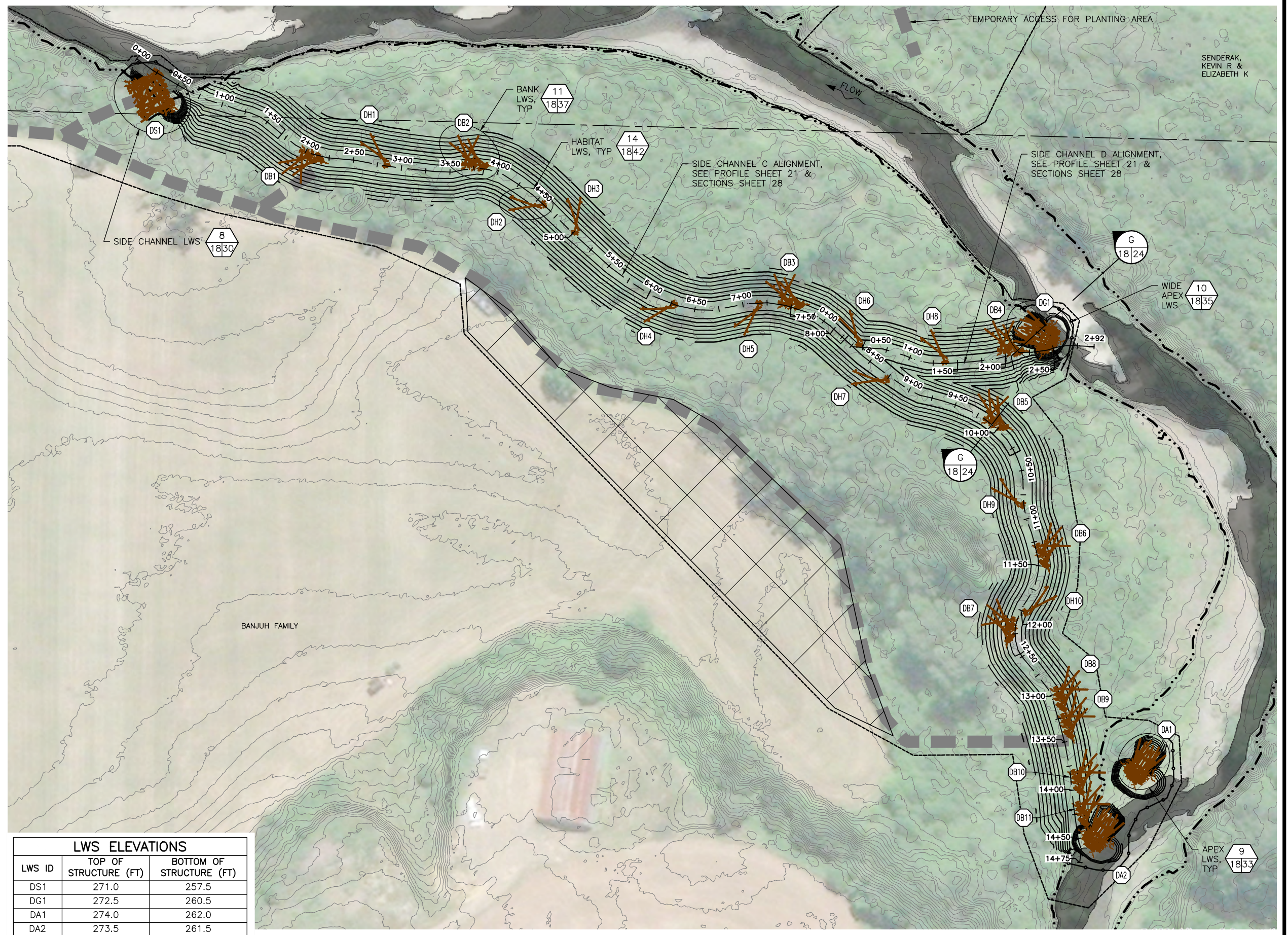
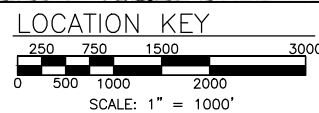
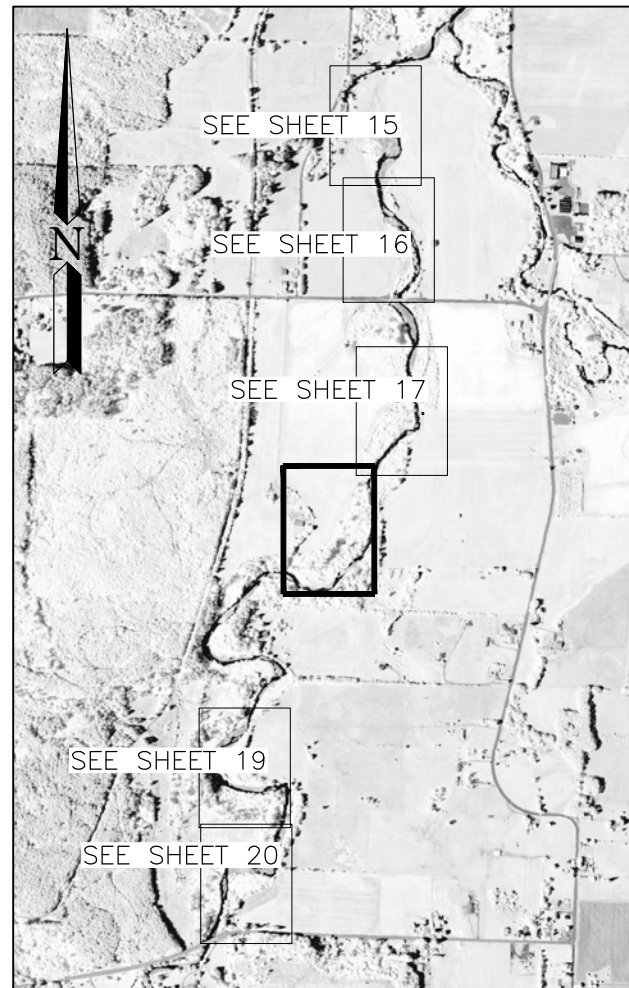
SHEET	OF
17	52

**LEGEND**

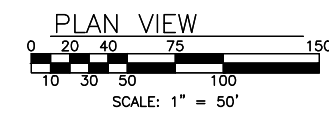
-  EXISTING CONTOURS (2FT)
-  PROPOSED CONTOURS (1FT)
-  TAXLOTS
-  ORDINARY HIGH WATER
-  LIMITS OF DISTURBANCE
-  PROPOSED SIDE CHANNEL WITH 100-FT STATION INCREMENTS
-  TEMPORARY ACCESS ROUTE
-  TEMPORARY STAGING AREA
-  EXISTING WETLAND
-  LOW-FLOW CHANNEL
-  RESTRICTED ACCESS AREA
-  COFFERDAM OR TURBIDITY CURTAIN (NOTE 1)

**NOTES**

1. LOCATIONS OF COFFERDAMS AND TURBIDITY CURTAINS ARE APPROXIMATE. ACTUAL LOCATION, EXTENT, AND TYPE OF WORK AREA ISOLATION SHALL BE DETERMINED DURING CONSTRUCTION. PRIOR TO STARTING WORK THE CONTRACTOR SHALL SUBMIT A STREAM DIVERSION AND DEWATERING PLAN TO THE WDFW PROJECT MANAGER FOR APPROVAL.
2. STAGING MAY OCCUR ALONG THE MARGINS OF ACCESS ROUTES. TOTAL WIDTH OF ACCESS ROUTE AND STAGING SHALL BE APPROVED BY THE WDFW PROJECT MANAGER BEFORE BEING UTILIZED.



LWS ELEVATIONS		
LWS ID	TOP OF STRUCTURE (FT)	BOTTOM OF STRUCTURE (FT)
DS1	271.0	257.5
DG1	272.5	260.5
DA1	274.0	262.0
DA2	273.5	261.5



**interfluve**  
 501 Portway Avenue, Suite 101  
 Hood River, OR 97031  
 541.386.9003  
 www.interfluve.com



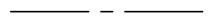

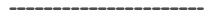
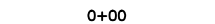


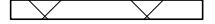



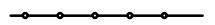
**WASHINGTON STATE**  
**DEPARTMENT OF FISH AND WILDLIFE**

<b>BID SET</b>		0 1" BAR MEASURES ONE INCH ON ORIGINAL DRAWINGS	
SYM	DATE	REVISION DESCRIPTION	BY
APPROVED AND RELEASED FOR CONSTRUCTION			
CHIEF ENGINEER	DATE:	DESIGNED BY	JG, PB
PROGRAM	DATE:	CHECKED BY	JG
		DRAWN BY	NS, DF
		DATE	1/27/22

**STILLMAN CREEK**  
**CHEHALIS BASIN EAR RESTORATION**  
 PROPOSED CONDITIONS PLAN (4 OF 6)

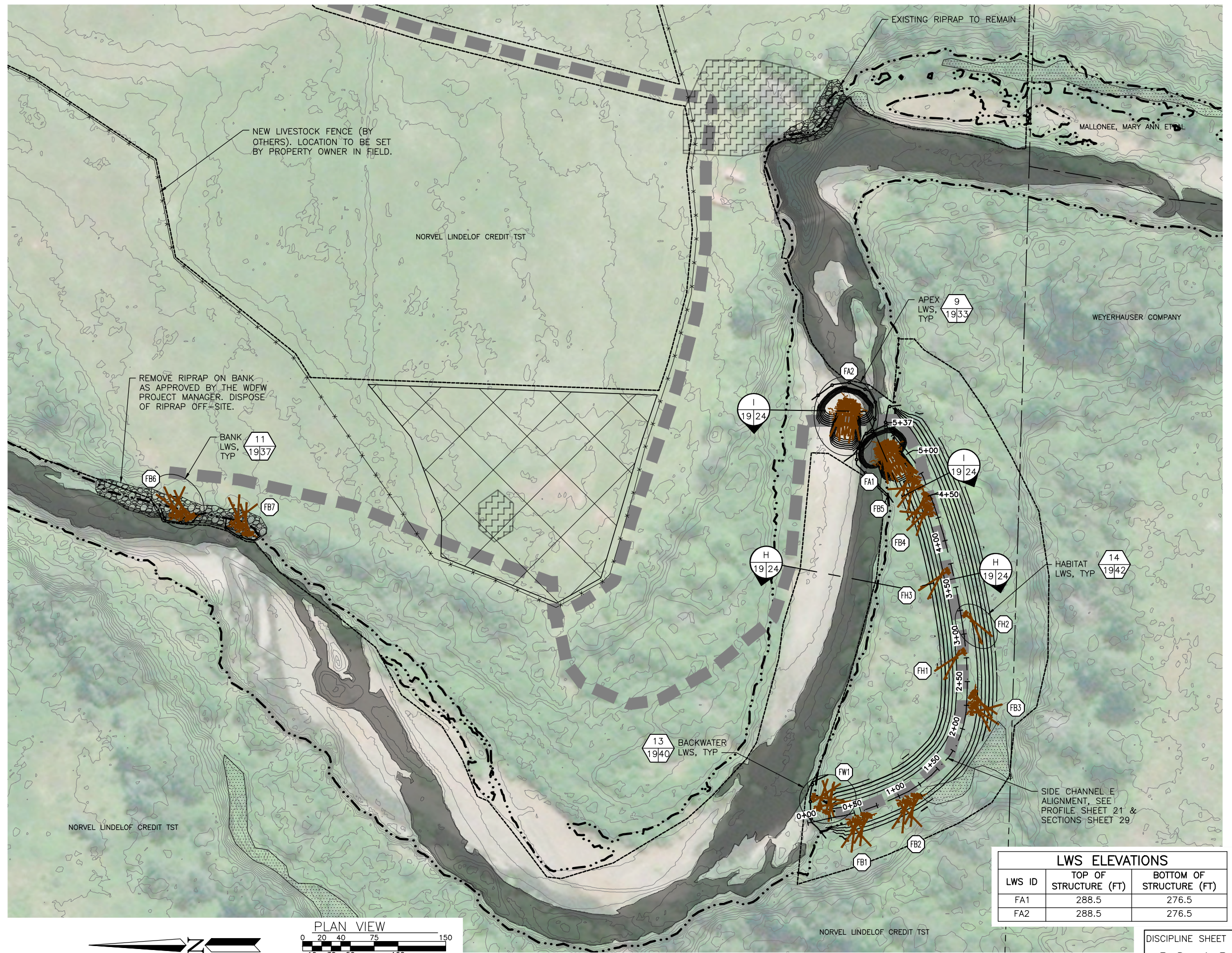
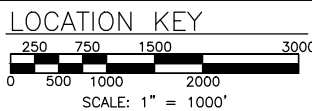
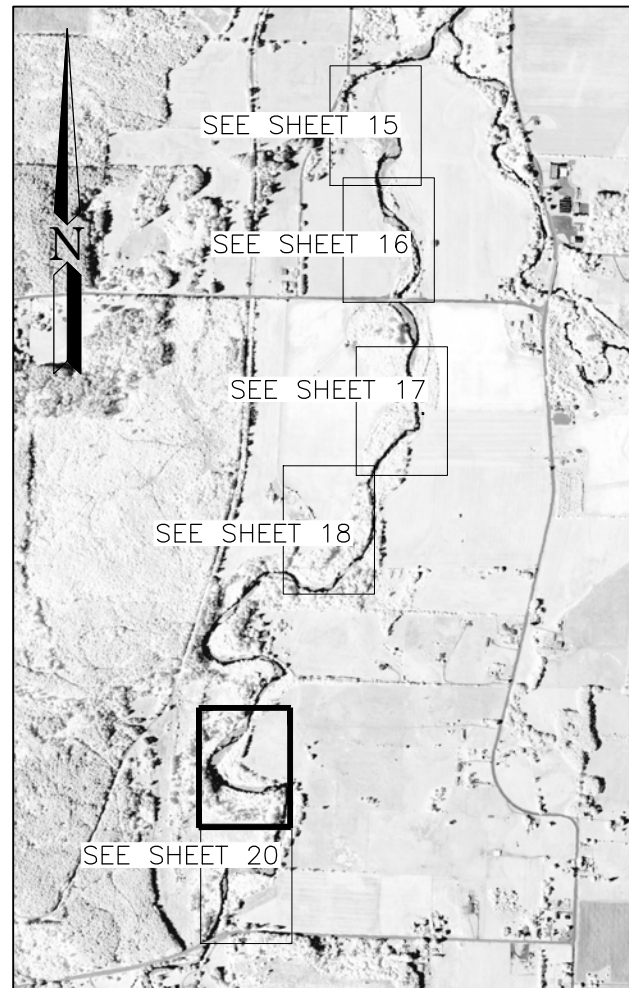
DISCIPLINE SHEET #	
<b>CO.11</b>	
PROJECT NO. LS:231001:2019-1	
SHEET	OF
18	52

**LEGEND**

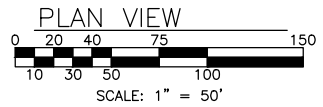
-  EXISTING CONTOURS (2FT)
-  PROPOSED CONTOURS (1FT)
-  TAXLOTS
-  ORDINARY HIGH WATER
-  LIMITS OF DISTURBANCE
-  PROPOSED SIDE CHANNEL WITH 100-FT STATION INCREMENTS
-  TEMPORARY ACCESS ROUTE
-  TEMPORARY STAGING AREA
-  EXISTING WETLAND
-  LOW-FLOW CHANNEL
-  RESTRICTED ACCESS AREA
-  COFFERDAM OR TURBIDITY CURTAIN (NOTE 1)
-  NEW FENCE

**NOTES**

1. LOCATIONS OF COFFERDAMS AND TURBIDITY CURTAINS ARE APPROXIMATE. ACTUAL LOCATION, EXTENT, AND TYPE OF WORK AREA ISOLATION SHALL BE DETERMINED DURING CONSTRUCTION. PRIOR TO STARTING WORK THE CONTRACTOR SHALL SUBMIT A STREAM DIVERSION AND DEWATERING PLAN TO THE WDFW PROJECT MANAGER FOR APPROVAL.
2. STAGING MAY OCCUR ALONG THE MARGINS OF ACCESS ROUTES. TOTAL WIDTH OF ACCESS ROUTE AND STAGING SHALL BE APPROVED BY THE WDFW PROJECT MANAGER BEFORE BEING UTILIZED.



LWS ELEVATIONS		
LWS ID	TOP OF STRUCTURE (FT)	BOTTOM OF STRUCTURE (FT)
FA1	288.5	276.5
FA2	288.5	276.5



**interfluve**  
 501 Portway Avenue, Suite 101  
 Hood River, OR 97031  
 541.386.9003  
 www.interfluve.com

**WASHINGTON STATE**  
**DEPARTMENT OF FISH AND WILDLIFE**

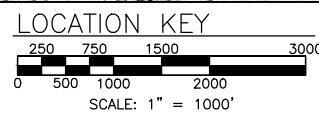
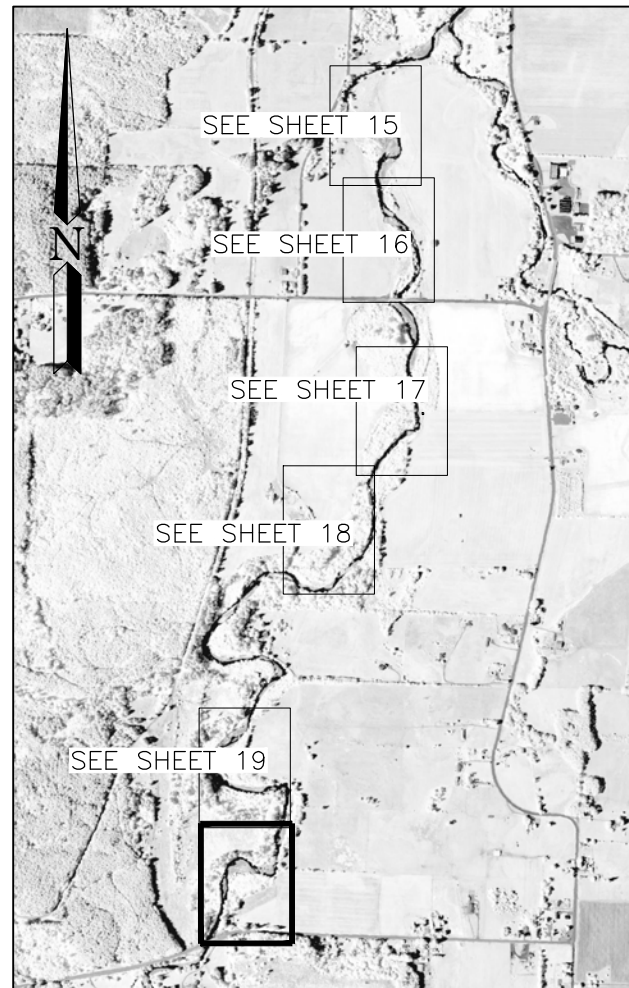
<b>BID SET</b>		DESIGNED BY JG, PB
APPROVED AND RELEASED FOR CONSTRUCTION		CHECKED BY JG
CHIEF ENGINEER	DATE:	DRAWN BY NS, DF
PROGRAM	DATE:	DATE 1/27/22

**STILLMAN CREEK**  
**CHEHALIS BASIN EAR RESTORATION**  
 PROPOSED CONDITIONS PLAN (5 OF 6)

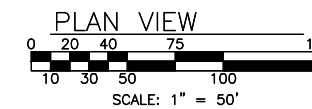
DISCIPLINE SHEET #  
**CO.12**  
 PROJECT NO.  
 LS:231001:2019-1  
 SHEET **19** OF **52**

- LEGEND**
- EXISTING CONTOURS (2FT)
  - PROPOSED CONTOURS (1FT)
  - TAXLOTS
  - ORDINARY HIGH WATER
  - LIMITS OF DISTURBANCE
  - TEMPORARY ACCESS ROUTE
  - TEMPORARY STAGING AREA
  - EXISTING WETLAND
  - LOW-FLOW CHANNEL
  - RESTRICTED ACCESS AREA
  - COFFERDAM OR TURBIDITY CURTAIN (NOTE 1)

- NOTES**
1. LOCATIONS OF COFFERDAMS AND TURBIDITY CURTAINS ARE APPROXIMATE. ACTUAL LOCATION, EXTENT, AND TYPE OF WORK AREA ISOLATION SHALL BE DETERMINED DURING CONSTRUCTION. PRIOR TO STARTING WORK THE CONTRACTOR SHALL SUBMIT A STREAM DIVERSION AND DEWATERING PLAN TO THE WDFW PROJECT MANAGER FOR APPROVAL.
  2. STAGING MAY OCCUR ALONG THE MARGINS OF ACCESS ROUTES. TOTAL WIDTH OF ACCESS ROUTE AND STAGING SHALL BE APPROVED BY THE WDFW PROJECT MANAGER BEFORE BEING UTILIZED.



LWS ELEVATIONS		
LWS ID	TOP OF STRUCTURE (FT)	BOTTOM OF STRUCTURE (FT)
GA1	297.5	285.5



DISCIPLINE SHEET #  
**CO.13**



**WASHINGTON STATE**  
**DEPARTMENT OF FISH AND WILDLIFE**

SYM	DATE	REVISION DESCRIPTION	BY
APPROVED AND RELEASED FOR CONSTRUCTION			
CHIEF ENGINEER		DATE:	
PROGRAM		DATE:	

0 1" BAR MEASURES ONE INCH ON ORIGINAL DRAWINGS  
 DESIGNED BY JG, PB  
 CHECKED BY JG  
 DRAWN BY NS, DF  
 DATE 1/27/22

**STILLMAN CREEK**  
**CHEHALIS BASIN EAR RESTORATION**  
PROPOSED CONDITIONS PLAN (6 OF 6)

PROJECT NO.  
LS:231001:2019-1

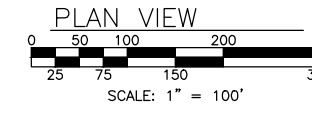
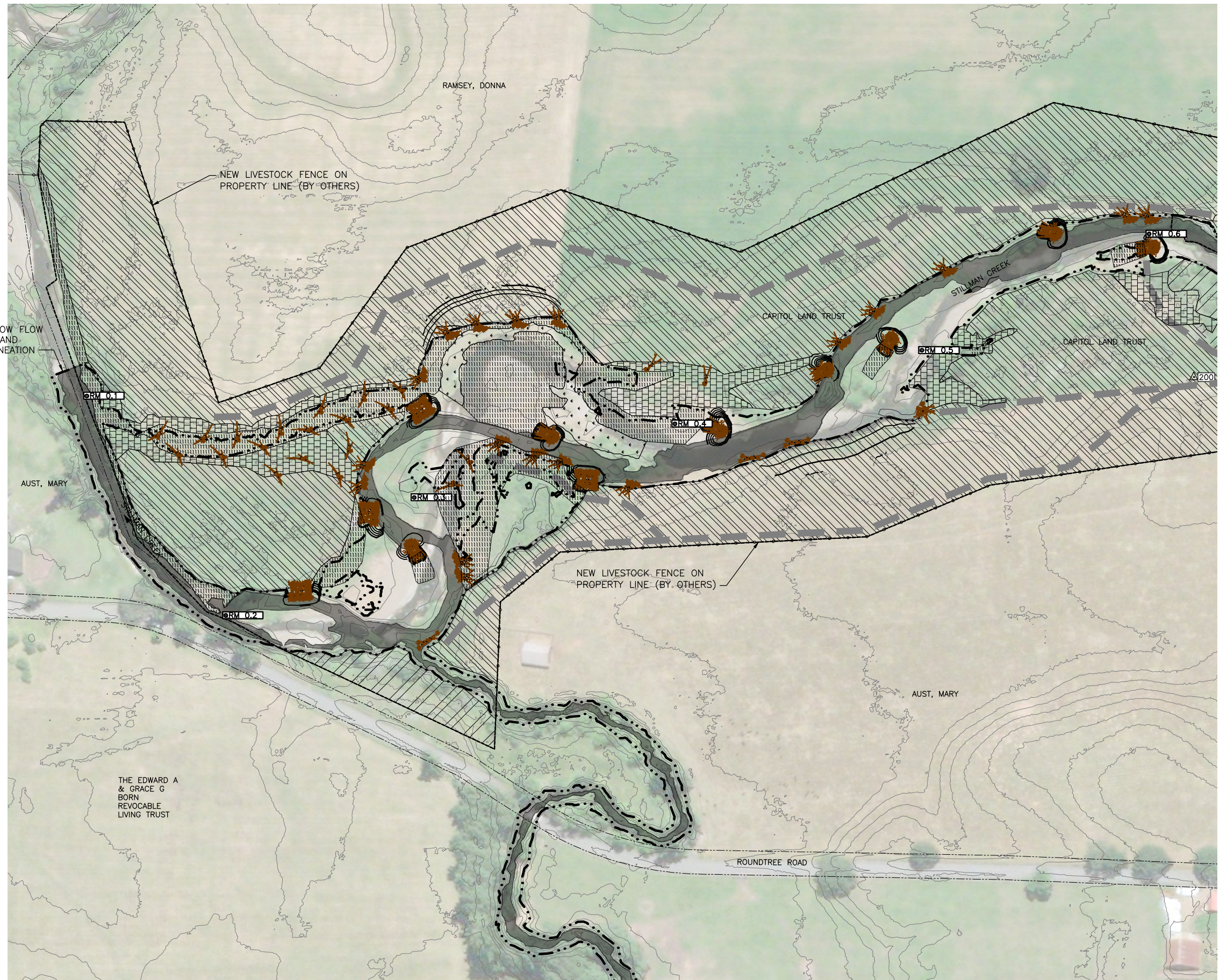
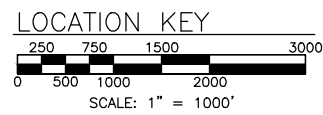
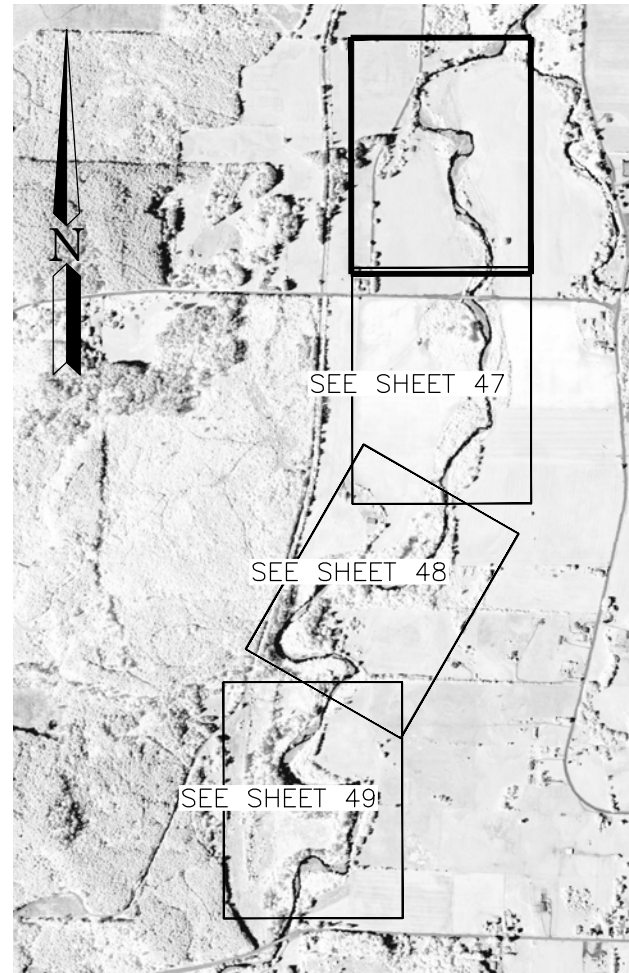
SHEET	OF
20	52

**LEGEND**

- EXISTING CONTOURS (2 FT)
- PROPOSED CONTOURS (2 FT)
- TAXLOTS
- LOW-FLOW CHANNEL
- RIPARIAN LIVE CUTTING REVEGETATION ZONE
- RIPARIAN PLANTING REVEGETATION ZONE
- UPLAND REVEGETATION ZONE
- EMERGENT SEEDING ZONE
- LOW DENSITY RIPARIAN UNDER-PLANTING REVEGETATION ZONE
- LOW DENSITY UPLAND UNDER-PLANTING REVEGETATION ZONE
- TEMPORARY ACCESS

**NOTES:**

1. WETLANDS ARE SHOWN AS DELINEATED IN 2018. SINCE 2018 CONDITIONS IN THE REACH DEPICTED ON THIS SHEET HAVE CHANGED SUBSTANTIALLY. THE TOPOGRAPHY, BATHYMETRY AND LOW FLOW CHANNEL REPRESENT CONDITIONS AS SURVEYED IN SEPTEMBER 2021.
2. RIPARIAN LIVE CUTTING, LOW DENSITY RIPARIAN UNDER-PLANTING AND LOW DENSITY UPLAND UNDER-PLANTING REVEGETATION ZONES WILL NOT BE SEEDED.



**WASHINGTON STATE**  
**DEPARTMENT OF FISH AND WILDLIFE**



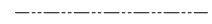


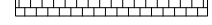
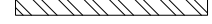
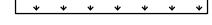
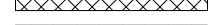
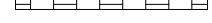
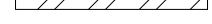

<b>BID SET</b>		0 — 1" BAR MEASURES ONE INCH ON ORIGINAL DRAWINGS
SYM	DATE	REVISION DESCRIPTION
APPROVED AND RELEASED FOR CONSTRUCTION		BY
CHIEF ENGINEER .....		DESIGNED BY JG, PB
PROGRAM .....		CHECKED BY JG
DATE: .....		DRAWN BY NS, DF
DATE: .....		DATE 1/27/22

**STILLMAN CREEK**  
**CHEHALIS BASIN EAR RESTORATION**  
  
REVEGETATION PLAN (1 OF 4)

DISCIPLINE SHEET #	
C0.39	
PROJECT NO. LS:231001:2019-1	
SHEET	OF
46	52

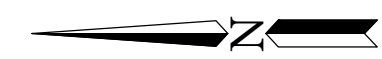
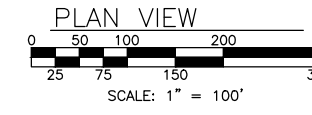
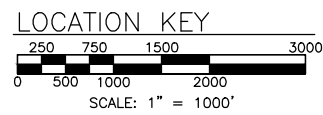
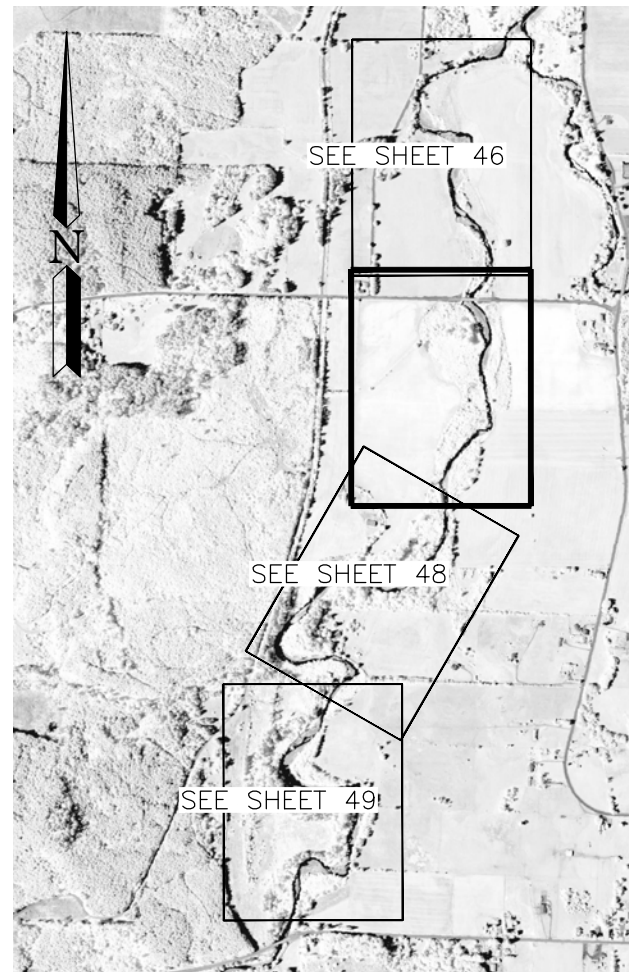


**LEGEND**

-  EXISTING CONTOURS (2 FT)
-  PROPOSED CONTOURS (2 FT)
-  TAXLOTS
-  LOW-FLOW CHANNEL
-  RIPARIAN LIVE CUTTING REVEGETATION ZONE
-  RIPARIAN PLANTING REVEGETATION ZONE
-  UPLAND REVEGETATION ZONE
-  EMERGENT SEEDING ZONE
-  AGRICULTURAL SEEDING ZONE
-  LOW DENSITY RIPARIAN UNDER-PLANTING REVEGETATION ZONE
-  LOW DENSITY UPLAND UNDER-PLANTING REVEGETATION ZONE
-  TEMPORARY ACCESS

**NOTES:**

1. PLANTING ZONE EXTENTS AND PLANT SPECIES ON THE SENDERAK PROPERTY TO BE AS DETERMINED BY THE LEWIS CONSERVATION DISTRICT. PLANT AND SEED QUANTITY TABLES DO NOT REFLECT PROPERTY OWNER SPECIFIC TAILORING.
2. RIPARIAN LIVE CUTTING, LOW DENSITY RIPARIAN UNDER-PLANTING AND LOW DENSITY UPLAND UNDER-PLANTING REVEGETATION ZONES WILL NOT BE SEEDED.



**interfluve**  
 501 Portway Avenue, Suite 101  
 Hood River, OR 97031  
 541.386.9003  
 www.interfluve.com


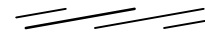


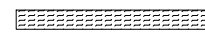
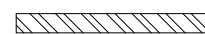
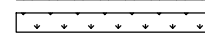

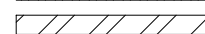

**WASHINGTON STATE**  
**DEPARTMENT OF FISH AND WILDLIFE**

<b>BID SET</b>		0 — 1" BAR MEASURES ONE INCH ON ORIGINAL DRAWINGS	
SYM	DATE	REVISION DESCRIPTION	BY
APPROVED AND RELEASED FOR CONSTRUCTION			
CHIEF ENGINEER	DATE:	DESIGNED BY	JG, PB
PROGRAM	DATE:	CHECKED BY	JG
		DRAWN BY	NS, DF
		DATE	1/27/22

**STILLMAN CREEK**  
**CHEHALIS BASIN EAR RESTORATION**  
 REVEGETATION PLAN (2 OF 4)

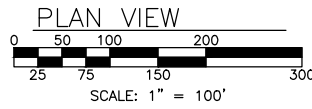
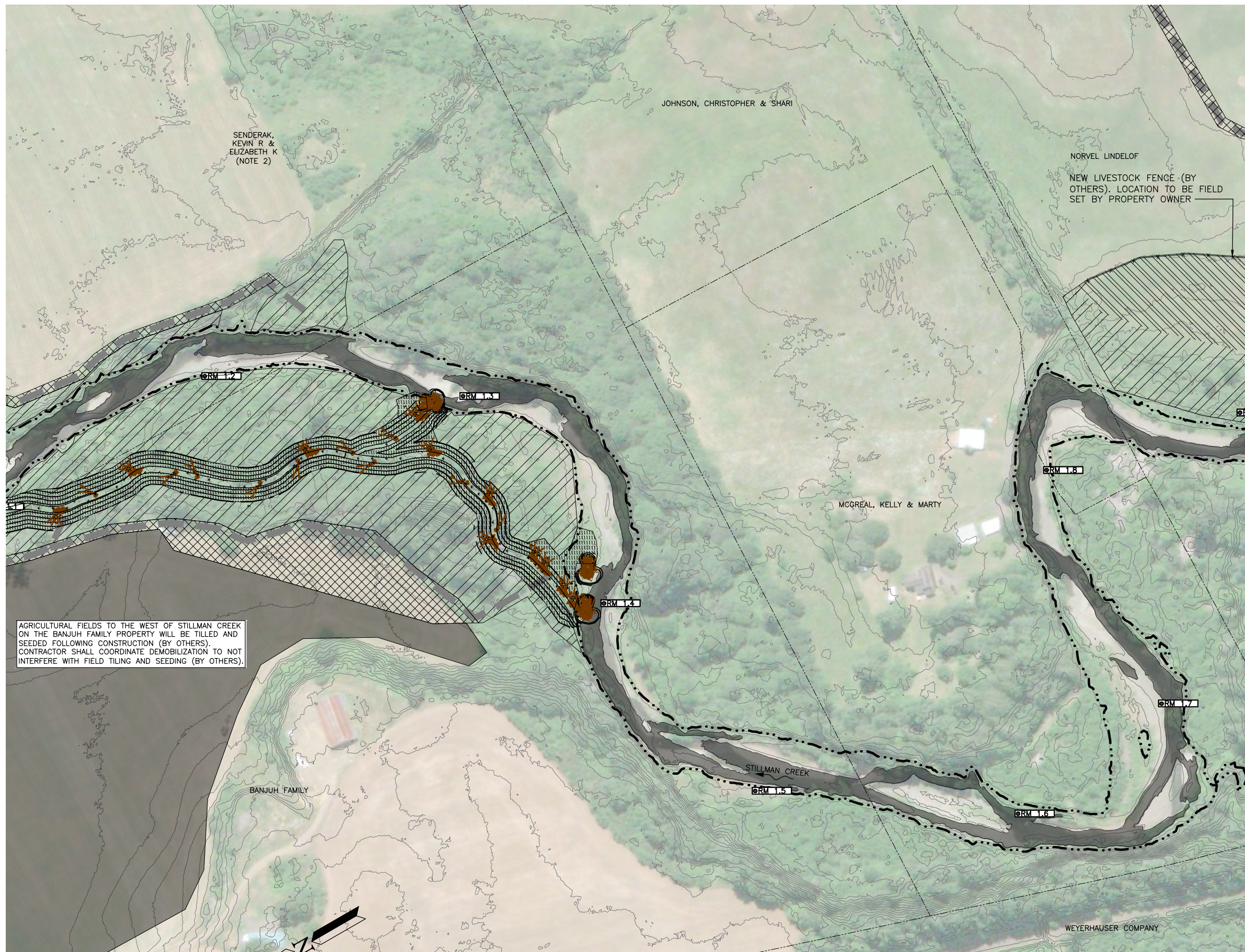
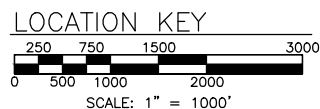
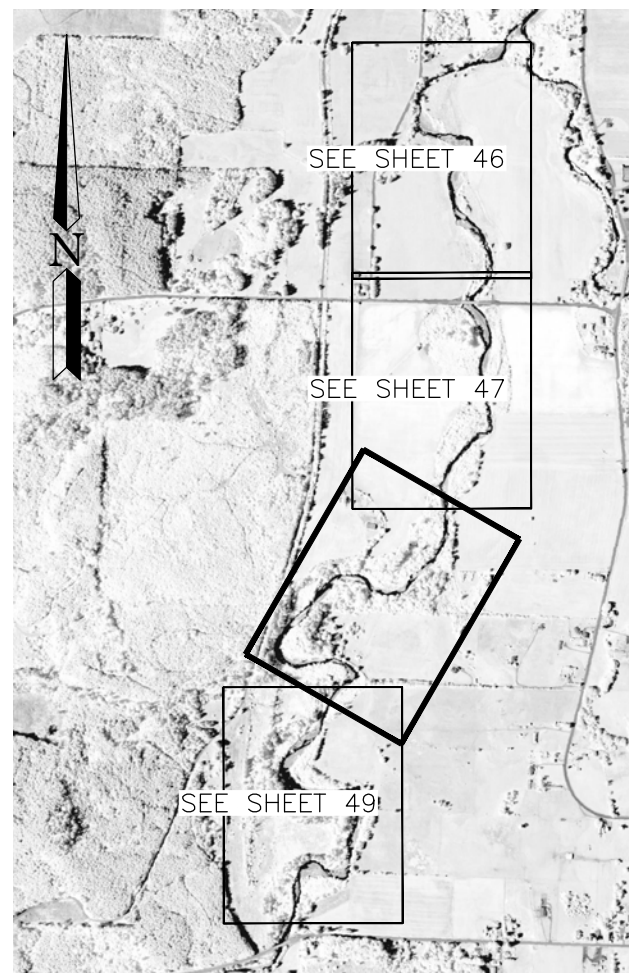
DISCIPLINE SHEET #	
CO.40	
PROJECT NO. LS:231001:2019-1	
SHEET	OF
47	52

**LEGEND**

-  EXISTING CONTOURS (2 FT)
-  PROPOSED CONTOURS (2 FT)
-  TAXLOTS
-  LOW-FLOW CHANNEL
-  RIPARIAN LIVE CUTTING REVEGETATION ZONE
-  UPLAND REVEGETATION ZONE
-  EMERGENT SEEDING ZONE
-  AGRICULTURAL SEEDING ZONE
-  LOW DENSITY UPLAND UNDER-PLANTING REVEGETATION ZONE
-  TEMPORARY ACCESS

**NOTES:**

1. PLANTING ZONE EXTENTS AND PLANT SPECIES ON THE SENDERAK PROPERTY TO BE AS DETERMINED BY THE LEWIS CONSERVATION DISTRICT. PLANT AND SEED QUANTITY TABLES DO NOT REFLECT PROPERTY OWNER SPECIFIC TAILORING.
2. PLANTING ZONE EXTENTS AND PLANT SPECIES ON THE LINDELOF PROPERTY TO BE AS DETERMINED BY THE LEWIS CONSERVATION DISTRICT. PLANT AND SEED QUANTITY TABLES DO NOT REFLECT PROPERTY OWNER SPECIFIC TAILORING.
3. RIPARIAN LIVE CUTTING, LOW DENSITY RIPARIAN UNDER-PLANTING AND LOW DENSITY UPLAND UNDER-PLANTING REVEGETATION ZONES WILL NOT BE SEEDED.



DISCIPLINE SHEET #  
**CO.41**



**WASHINGTON STATE**  
**DEPARTMENT OF FISH AND WILDLIFE**



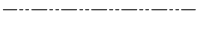

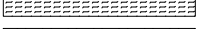
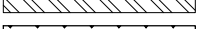
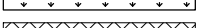
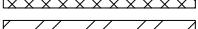
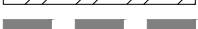

SYM	DATE	REVISION DESCRIPTION	BY	DESIGNED BY JG, PB
APPROVED AND RELEASED FOR CONSTRUCTION				CHECKED BY JG
CHIEF ENGINEER .....				DRAWN BY NS, DF
PROGRAM .....				DATE 1/27/22

**STILLMAN CREEK**  
**CHEHALIS BASIN EAR RESTORATION**  
  
REVEGETATION PLAN (3 OF 4)

PROJECT NO.  
LS:231001:2019-1

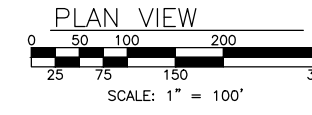
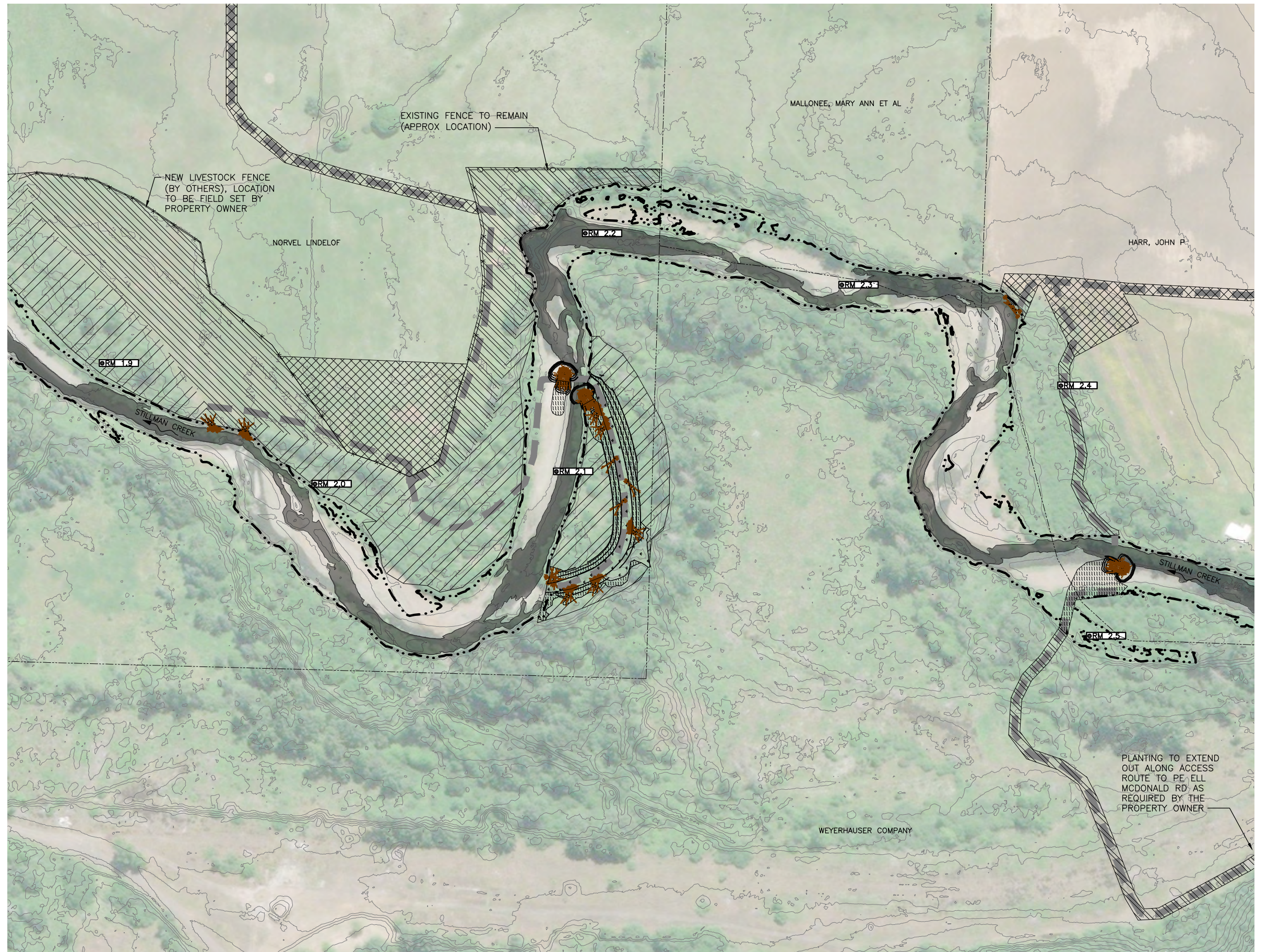
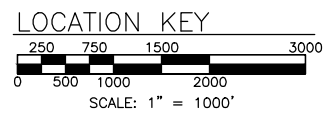
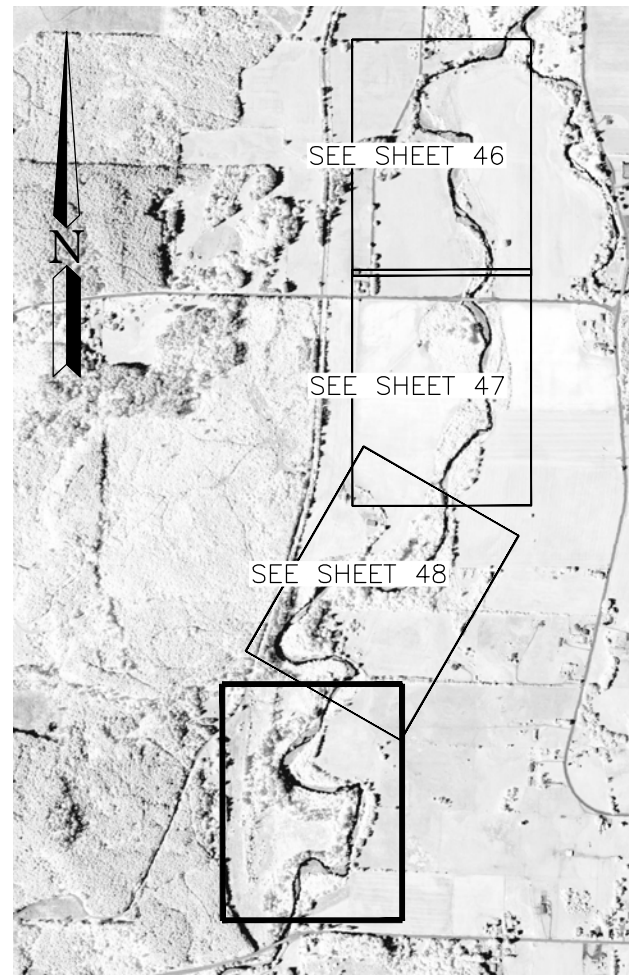
SHEET	OF
48	52

**LEGEND**

-  EXISTING CONTOURS (2 FT)
-  PROPOSED CONTOURS (2 FT)
-  TAXLOTS
-  LOW-FLOW CHANNEL
-  RIPARIAN LIVE CUTTING REVEGETATION ZONE
-  UPLAND REVEGETATION ZONE
-  EMERGENT SEEDING ZONE
-  AGRICULTURAL SEEDING ZONE
-  LOW DENSITY UPLAND UNDER-PLANTING REVEGETATION ZONE
-  TEMPORARY ACCESS

**NOTES:**

1. PLANTING ZONE EXTENTS AND PLANT SPECIES ON THE LINDELOF PROPERTY TO BE AS DETERMINED BY THE LEWIS CONSERVATION DISTRICT. PLAN AND SEED QUANTITY TABLES DO NOT REFLECT PROPERTY OWNER SPECIFIC TAILORING.
2. RIPARIAN LIVE CUTTING, LOW DENSITY RIPARIAN UNDER-PLANTING AND LOW DENSITY UPLAND UNDER-PLANTING REVEGETATION ZONES WILL NOT BE SEEDED.



DISCIPLINE SHEET #  
**CO.42**

**interfluv**  
501 Portway Avenue, Suite 101  
Hood River, OR 97031  
541.386.9003  
www.interfluv.com

**WASHINGTON STATE**  
**DEPARTMENT OF FISH AND WILDLIFE**

<b>BID SET</b>		0 — 1" BAR MEASURES ONE INCH ON ORIGINAL DRAWINGS
SYM	DATE	REVISION DESCRIPTION
		APPROVED AND RELEASED FOR CONSTRUCTION
CHIEF ENGINEER .....		DATE: .....
PROGRAM .....		DATE: 1/27/22
		DESIGNED BY JG, PB
		CHECKED BY JG
		DRAWN BY NS, DF

**STILLMAN CREEK**  
**CHEHALIS BASIN EAR RESTORATION**  
  
REVEGETATION PLAN (4 OF 4)

PROJECT NO.  
LS:231001:2019-1

SHEET	OF
49	52