

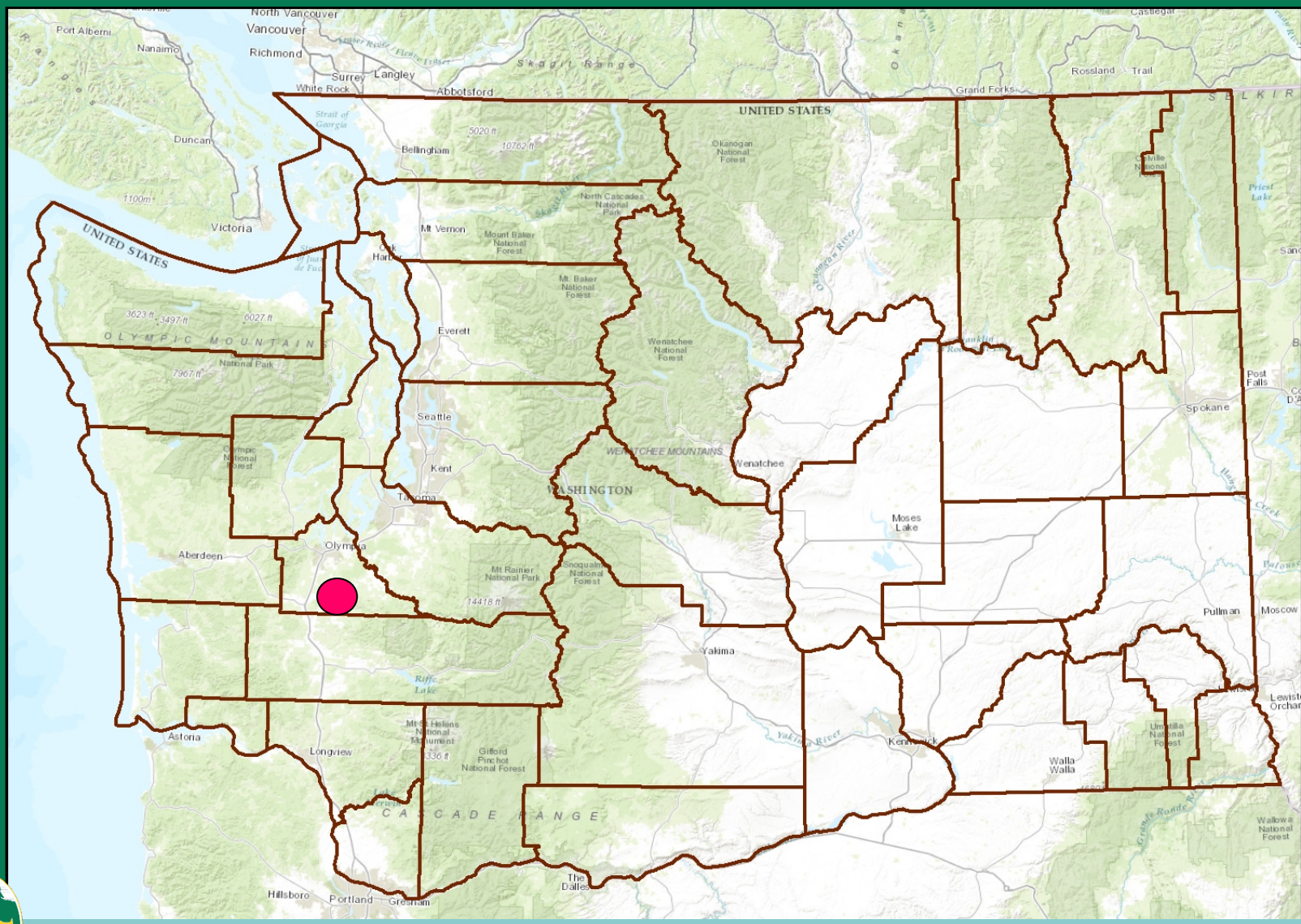
4. Land Transactions

Karen Edwards
Real Estate Manager, Wildlife Program

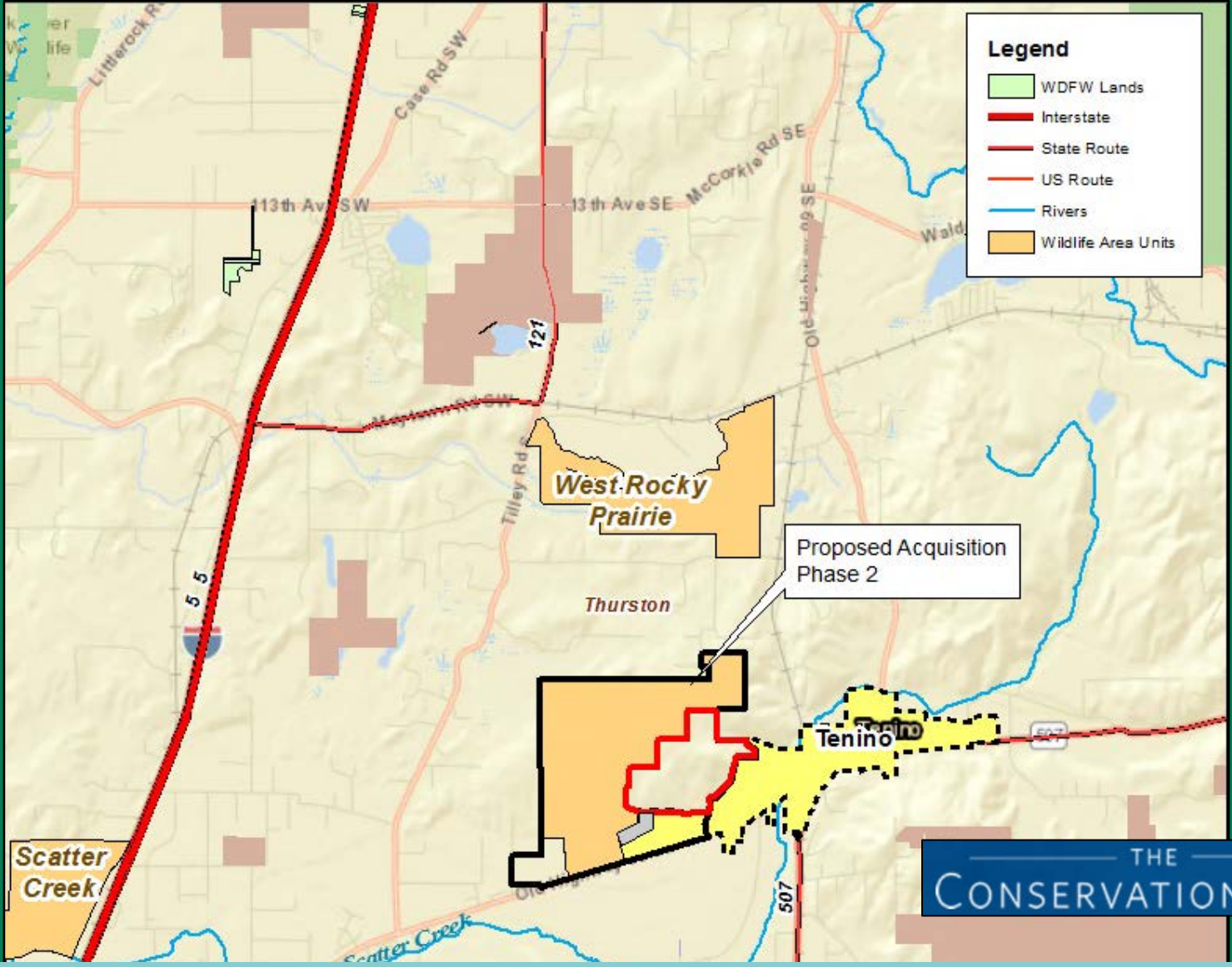


Proposed Acquisition – Violet Prairie/Scatter Creek WLA

350(+/-) Acres - Thurston County



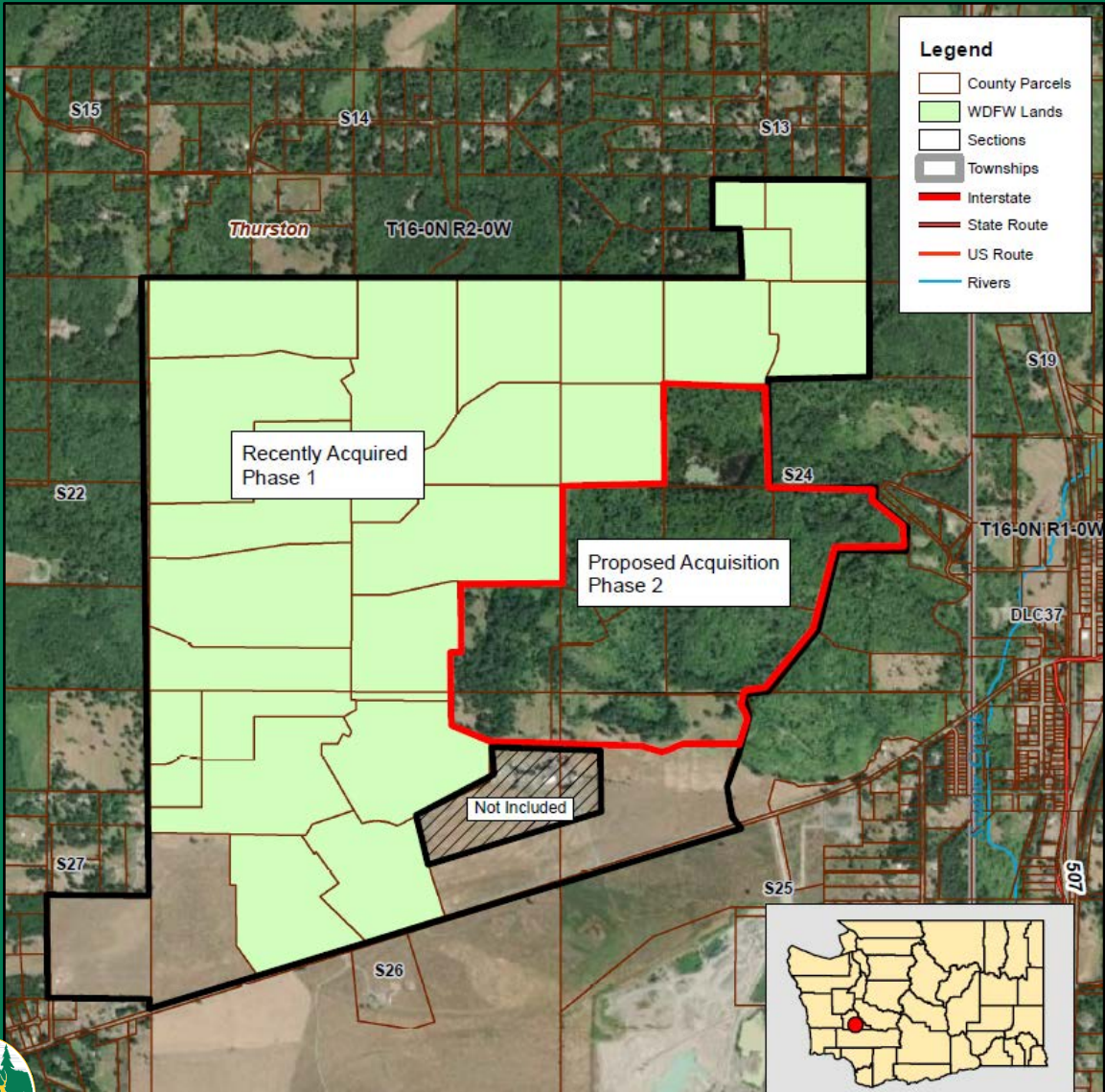
Proposed Acquisition – Violet Prairie/Scatter Creek WLA 350(+/-) Acres - Thurston County



THE
CONSERVATION FUND



Proposed Acquisition – Violet Prairie/Scatter Creek WLA 350(+/-) Acres - Thurston County



Appraised Value \$2,630,845



Proposed Acquisition – Violet Prairie/Scatter Creek WLA 350(+/-) Acres - Thurston County



Mardon skipper



Taylor's Checkerspot



Elk



Mazama pocket gopher



Puget Blue



A scenic landscape featuring a large, vibrant green field in the foreground. In the middle ground, there are several trees, including a prominent, large, leafy tree on the left and a cluster of taller, darker trees on the right. The background shows a clear blue sky and a distant, hazy horizon line. The overall scene is bright and clear, suggesting a sunny day.

Questions?