

## 2023 Lake and Stream Rehab Program Treatment Locations

### Stevens County:

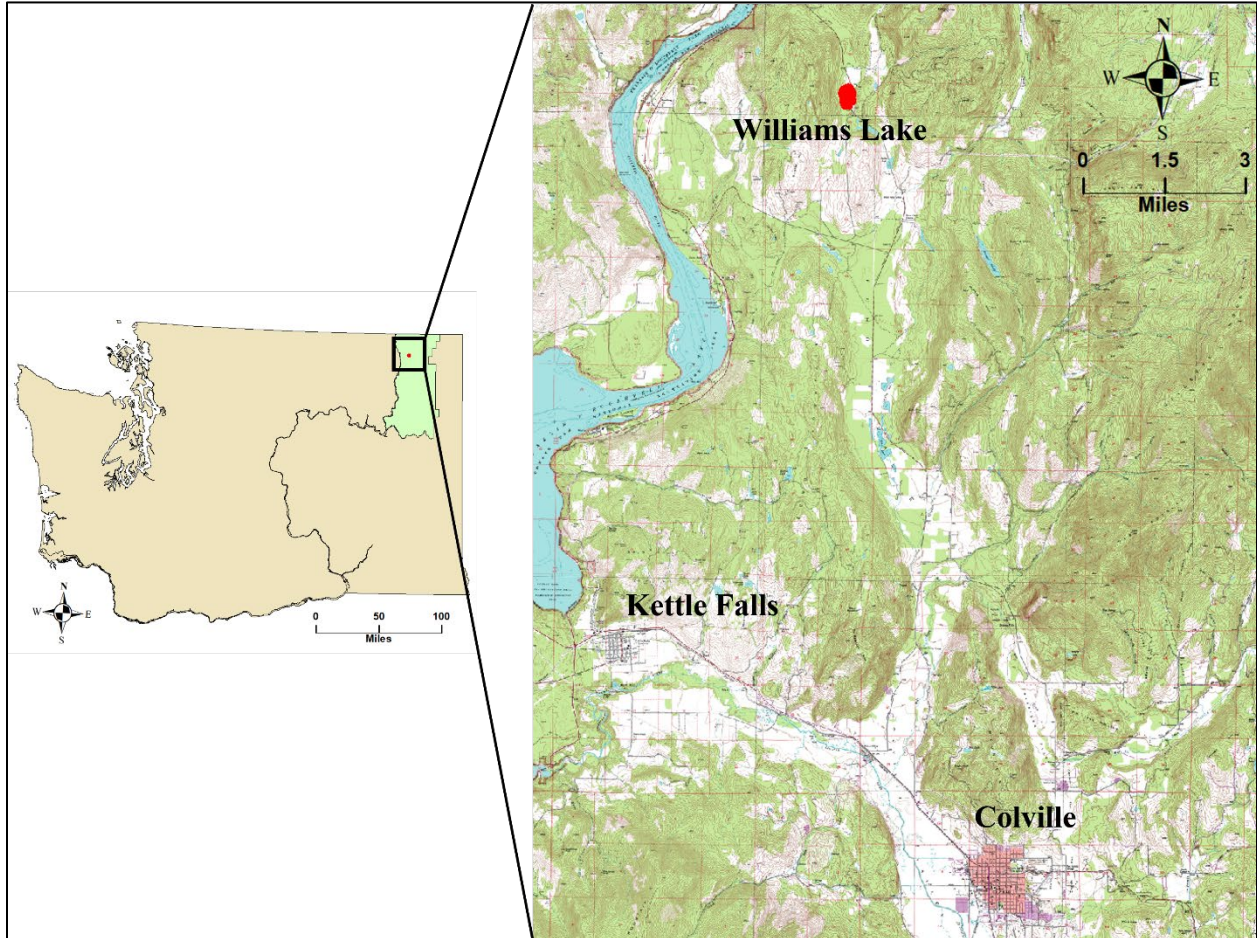
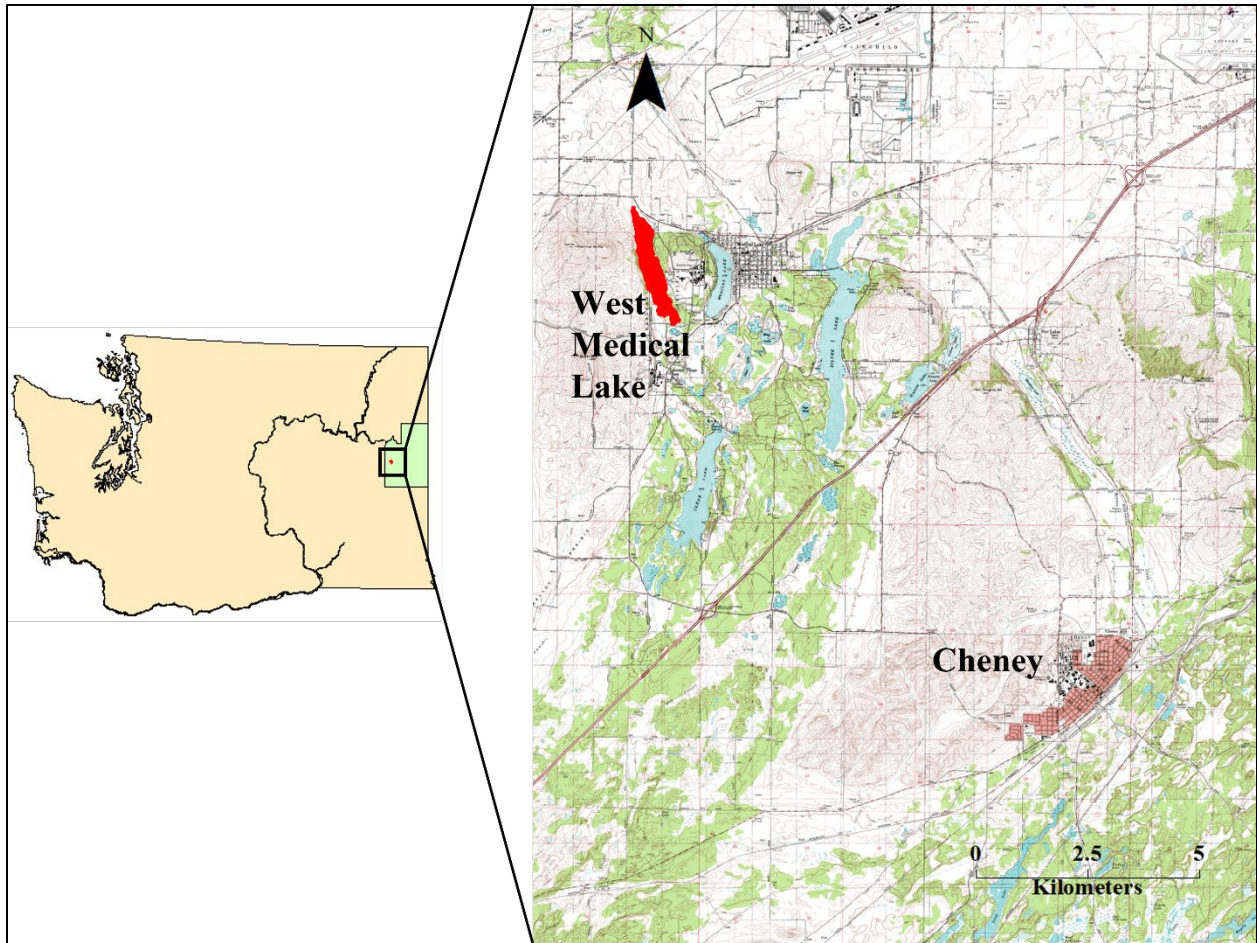


Figure 1. Williams Lake (red) area map, location in Stevens County (green), and Washington State.

**Williams Lake** – Located approximately 10.5 miles northeast of Kettle Falls, WA in Section 36, Township 38 North, Range 38 East, WM.

**Spokane County:**

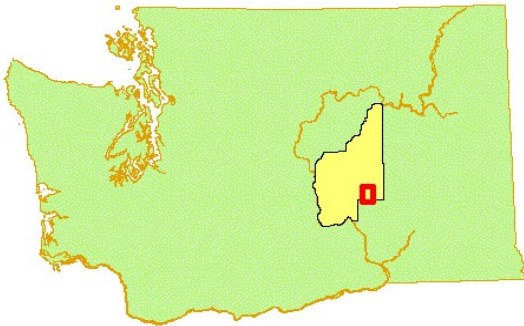


*Figure 2. West Medical Lake (red) area map, location in Spokane County (green), and Washington State.*

**West Medical Ponds** – Section 12 and 24, Township 24 North, Range 40E, WM.  
Pond 1 (47.58329N, -117.71100W), pond 2 (47.56172N, -117.70128W), pond 3  
(47.56159N, -117.70031W), and pond 4 (47.56198N, -117.70003W).



**Grant County:**



*Figure 3. Map of June, North-North Windmill, and North Windmill lakes located in southern Grant County, WA.*

The proposed waters in Grant County are a chain of lakes:

**June Lake** – Located approximately 5 miles southeast of O’Sullivan Dam and Potholes Reservoir in sections 21 and 22, Township 17 North, Range 29 East, WM.

**North-North Windmill Lake** – Located approximately 5 miles southeast of O’Sullivan Dam and Potholes Reservoir in section 22, Township 17 North, Range 29 East, WM.

**North Windmill Lake** – Located approximately 5 miles southeast of O’Sullivan Dam and Potholes Reservoir in section 27, Township 17 North, Range 29 East, WM.

**Windmill Lake** – Located approximately 5 miles southeast of O’Sullivan Dam and Potholes Reservoir in section 27, Township 17 north, Range 29 East, WM.

**Canal Lake** – Located approximately 5 miles southeast of O’Sullivan Dam and Potholes Reservoir in section 33, Township 17 North, Range 29 East, WM.