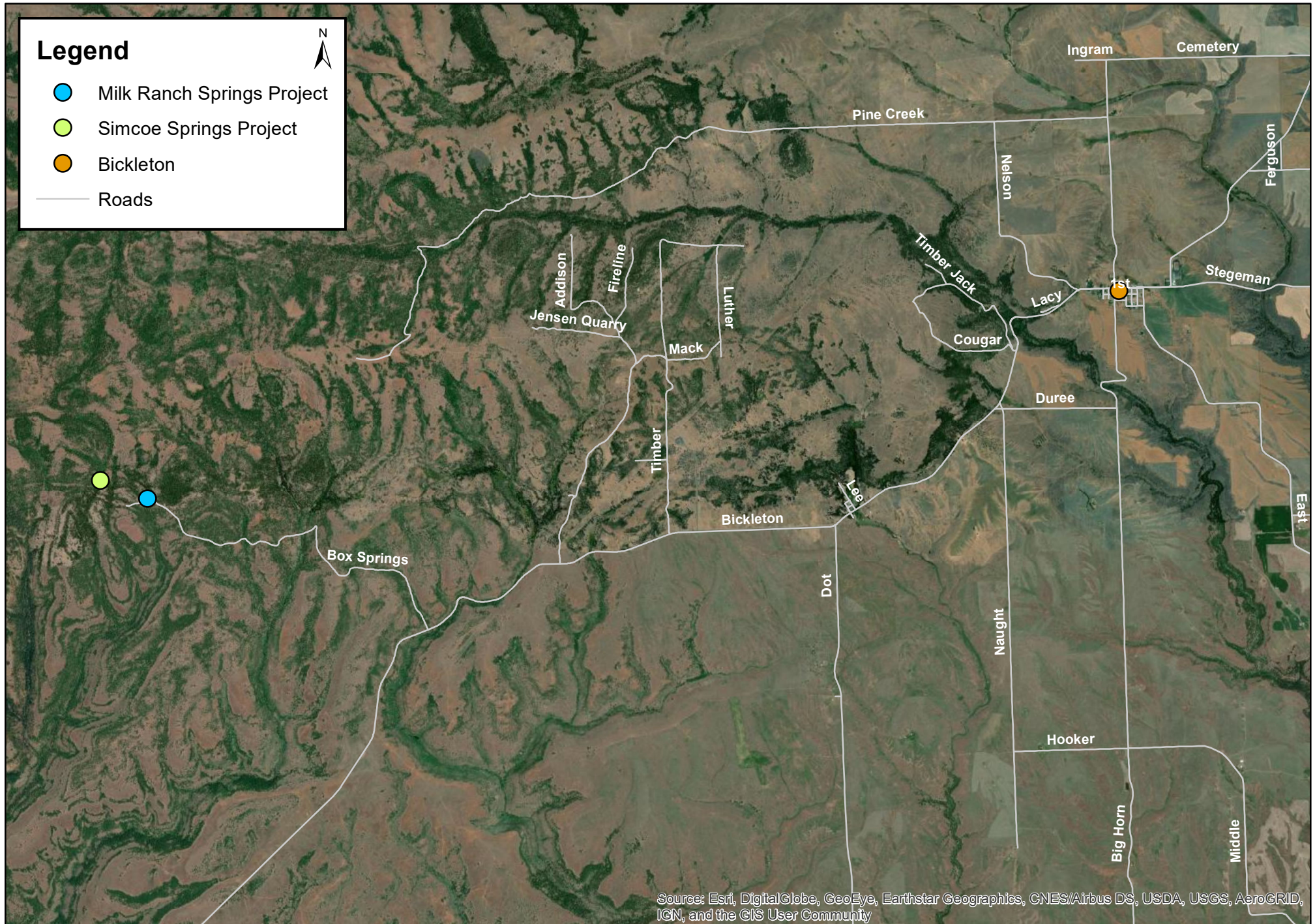




Simcoe Springs & Milk Ranch Springs General Location Map



Source: Esri, DigitalGlobe, GeoEye, Earthstar Geographics, CNES/Airbus DS, USDA, USGS, AeroGRID, IGN, and the GIS User Community

0 1 2 Miles

Milk Ranch Spring Site



Project Components:

- Connect to existing supply pipeline on southeast side of road
- Install new trough supply pipe (~150 ft) and new spring overflow pipe (~90 ft)
- Install new trough and remove old trough
- Install 4 strand fence (3 barbed, 1 smooth) around meadow, tie into new existing fence on North side of meadow (~750 total length)

Simcoe Springs Unit Site



Project Components:

- Connect to existing supply pipeline & install new supply pipeline to new troughs
- Install two new troughs
- Remove 3 existing 6 ft diameter circular troughs, ~150 ft of broken 1.5" PVC pipe, and metal tank (18 ft L x 8 ft W x 7 ft H)