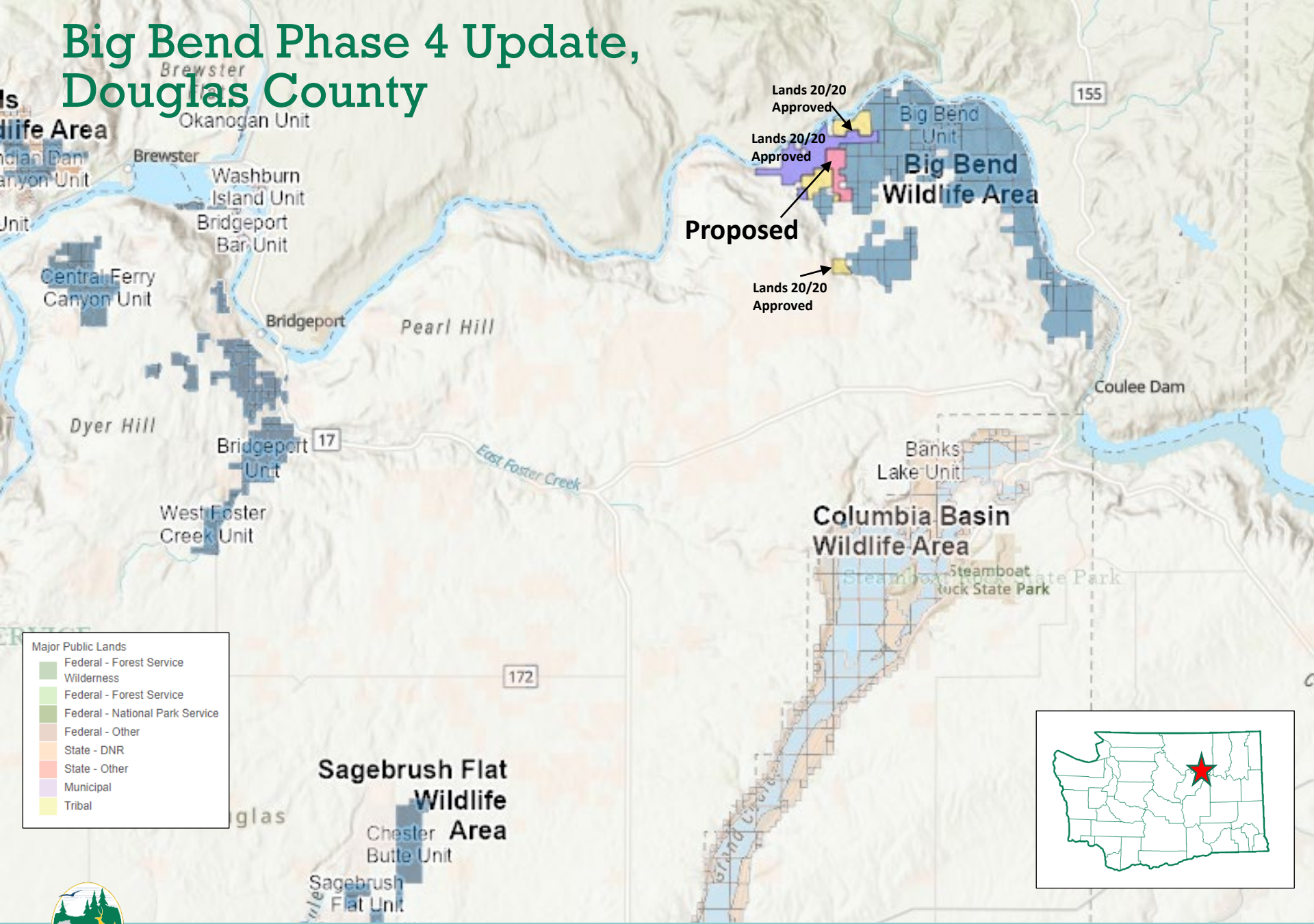


Big Bend Phase 4 Update, Douglas County

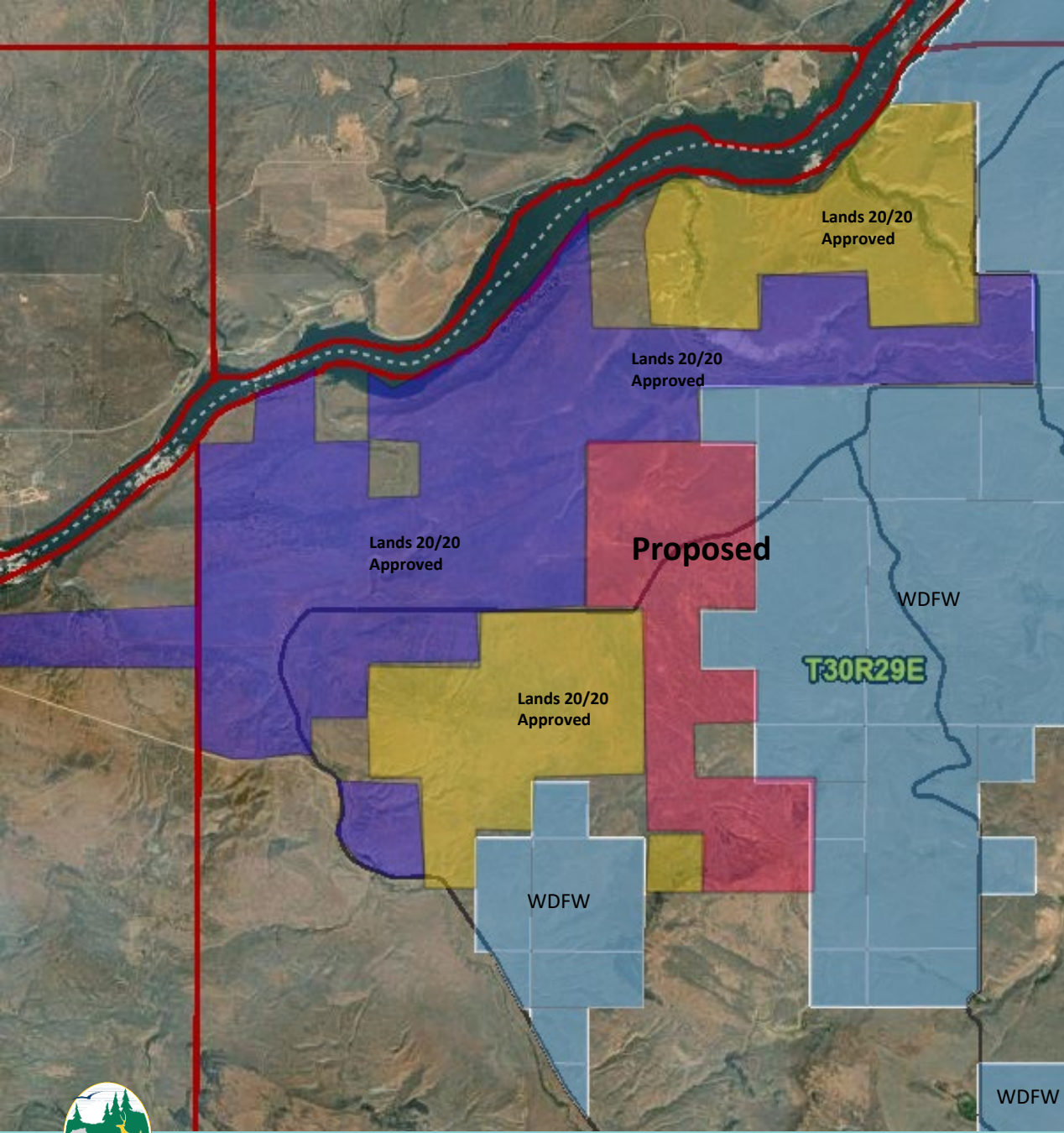


- Major Public Lands
- Federal - Forest Service Wilderness
 - Federal - Forest Service
 - Federal - National Park Service
 - Federal - Other
 - State - DNR
 - State - Other
 - Municipal
 - Tribal



Big Bend Phase 4 Update, Douglas County

- This property adds approximately 716 acres to a project area approved in Lands 20/20 in 2022 at the Big Bend Wildlife Area.
- Upon approval, WDFW will continue to work with Douglas County Commissioners on viable ways in which to acquire and manage the property.



Big Bend Phase 4 Update, Douglas County

- The project goal is the expansion of the Big Bend Wildlife area to support the conservation of threatened and endangered species. Including the Columbian sharp-tailed grouse and the rehabilitation and protection of shrubsteppe and riparian habitats.
- Other important species here include mule deer, turkey and waterfowl.
- Recreational opportunities include mule deer and upland bird hunting as well as opportunities for turkey and waterfowl. The site also provides 2.6 miles of Columbia River waterfront.

