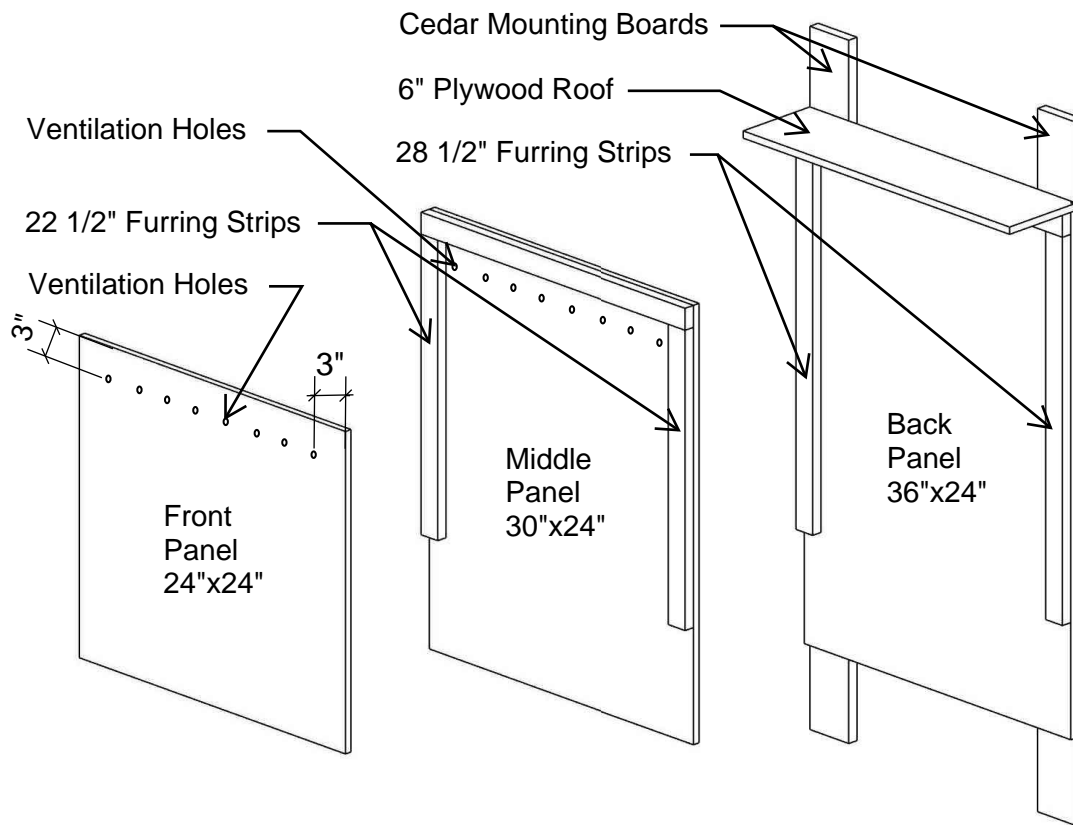


Woodworking Projects for Backyard Wildlife
Duel Chamber Economy Bat House



Duel Chamber Economy Bat House

- Materials (makes two duel-chamber houses)
- 1 sheet of 1/2" exterior plywood
 - 4 - 1 x 2 x 8' fr boards (furring strip) -
(note furring strip must be 3/4" or more actual dimension)
 - 2 - 1 x 4 x 8' cedar boards (mounting board)
 - 50 - 1 1/4" outdoor wood screws
 - 1 gallon of latex paint

Cutting Wood (diagrams on pg 2)

Cut a sheet of plywood in the long direction to make two 2'x8' pieces. Each piece should be cut into the following to make one house.

- Back Panel = 36"x24"
- Middle Panel = 30"x24"
- Front Panel = 24"x24"
- Roof Strip = 6"x24"

Cut furring strip into the following for each house

- Two 24" pieces for the top
- Two 22 1/2" pieces for the sides
- Two 28 1/2" pieces for the sides

Cut the cedar board into two 48" pieces

Assembly

Roughen all sides of plywood, including the back but not the front exterior, with a claw hammer or other tool. Remove any splintered wood.

Screw furring boards to back panel as shown above, top piece first.

Screw middle panel to the back panel furring boards. The top of each panel should align.

Screw furring boards to middle panel as shown above, top piece first.

Screw front panel to the middle panel furring boards. The top of each panel should align.

Attach cedar mounting boards to back with screws entering through plywood and furring

Paint with medium to dark exterior water-based paint or stain at least twice. If necessary, roughen landing area below front sheet again.

Caulk all seems that aren't tight with paintable silicone caulk.

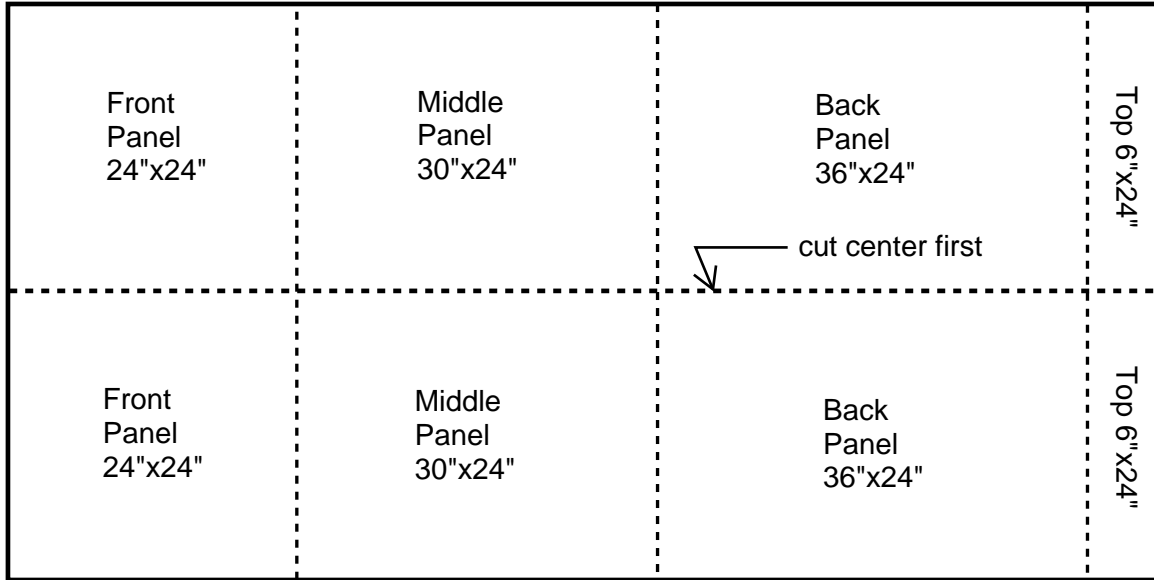
Drill 8 to 10, 1/2" holes in the front and middle panels approximately 3" down from the top to provide ventilation.



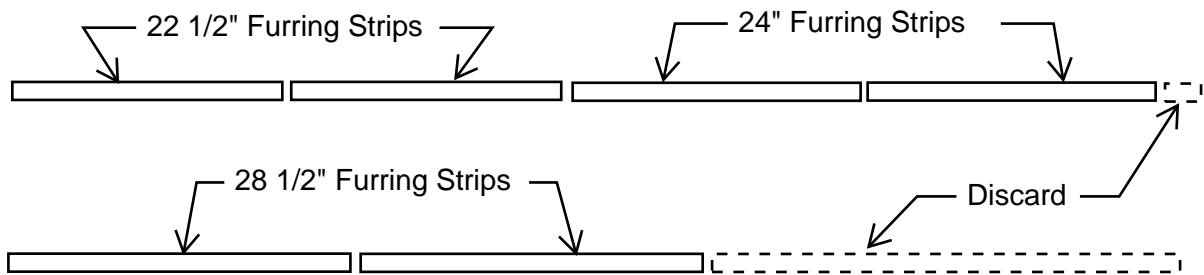
Woodworking Projects for Backyard Wildlife
Duel Chamber Economy Bat House

Cutting Diagrams

4'x8' Plywood Sheet



1"x2"x8' Furring Strips (perform cuts below x 2)



Cedar Mounting Boards (perform cut below x 2)

