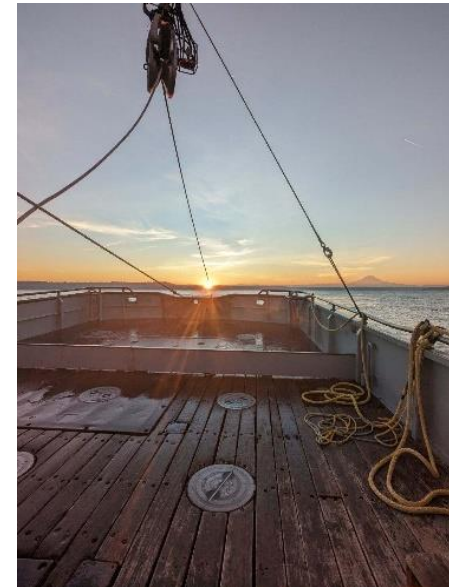


Puget Sound Commercial Salmon 2023 Post-Season Meeting

WDFW Puget Sound Commercial Salmon Team
Mill Creek 1/17/2024



Washington
Department of
**FISH &
WILDLIFE**



WELCOME – THANKS FOR JOINING US!

ZOOM MEET/ CALL LOGISTICS / GROUND RULES

- You can turn your camera on and mute or unmute yourself through the control panel at the bottom of your screen.
- We will keep folks muted during the beginning of our program, then will unmute folks when we open it up for questions and feedback. Callers can unmute yourself by pressing *6 on your phone.
- We ask that you “raise their hand” to ask a question which you can access through the control panel at the bottom of the screen. You can also raise your hand by hovering over your face or name on the list of participants. Callers can raise their hand by dialing *5 and mute or unmute by using *6.
- Be respectful of others
- Mute phone or line
- Be tough on issues and questions, not on people or organizations
- No personal attacks, insults or threats
- Listen
- Speak and act professional – *no offensive, disrespectful, or derogatory language, including profanity*
- Allow for a balance of speaking time – *limit length and number of times to speak on each topic*
- This meeting is being recorded.
- If you have any technical issues during the call, use the chat button and we will help you through those. Please do not use the chat for questions or comments on the presentation, we will take those live.



Agenda

Staff and Attendee Introductions

Catch, Effort, and 2023 Season Recap

South Sound Limited Participation Review

Data Collection, Trends, GSI and Summary

2024 Season and Preliminary NOF Schedule

Questions and Comments



Staff Introductions

Management Leadership

- Mark Baltzell – Statewide Salmon and Steelhead Manager
- Chad Herring – Anadromous Resources Policy Analyst
- Dr. Mickey Agha – Statewide Salmon Science and Policy Analyst

Commercial Management and Monitoring

- Christina Iverson – Puget Sound Salmon Manager
- David Low – Puget Sound Commercial Salmon Manager
- Kwasi Addae – Puget Sound Commercial Salmon Monitoring Biologist
- Sheila Smith – Statewide Ticket and Quick Report Manager
- Sarah Golden – Quick Reporter

Research and Data Team

- Matt Bogaard – Chum, Pink, Sockeye Specialist
- Elsa Toskey – Chum, Pink, Sockeye Biologist
- Dr. Kirsten Simonsen – Sonar Research Lead



2023 Recap, Effort & Catch

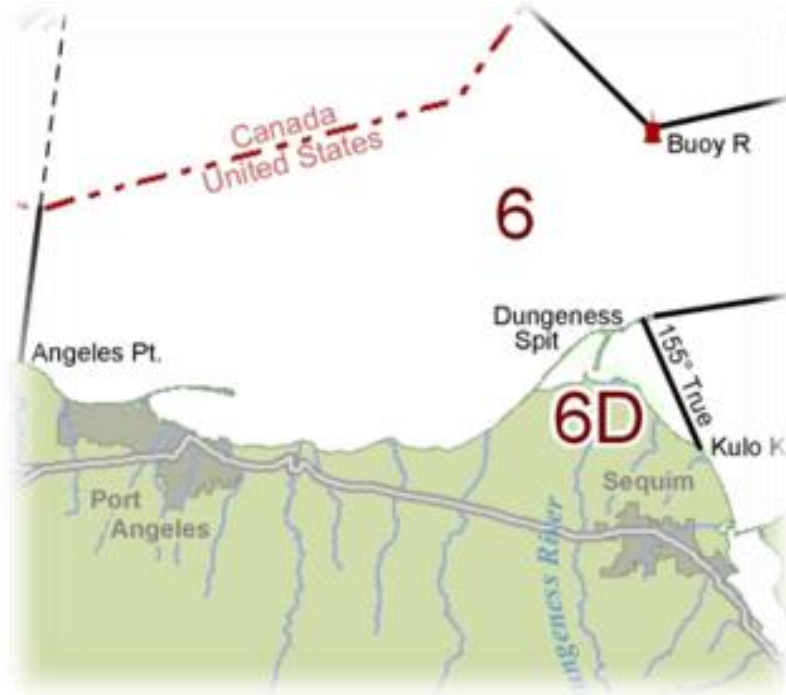


Puget Sound Non-Tribal Commercial Salmon Catch

Year	Chinook	Coho	Chum	Sockeye	Pink
2023*	15,785	10,076	65,502	-	229,770
2022	17,757	17,189	471,516	75,537	
2021	7,316	11,964	85,109	-	155,754
2020	9,286	6,652	103,069	-	
2019	9,509	2,980	135,230	-	92,790
2018	13,700	9,647	388,943	397,671	

*2023 numbers are preliminary and subject to change





Area 6D – Skiff Gillnet	
Year	Coho
2023*	1,378
2022	5,055
2021	5,157
2020	3,107
2019	966
2018	2,277

*2023 numbers are preliminary and subject to change

Area 6D – Dungeness Bay

2023 Fishery At-a-Glance

- Opened: Weeks 38 – 42
- Catch 31% of running 3yr Avg





Areas 7 & 7A – San Juans: Chinook, coho and pink

Areas 7/7A			
	Chinook	Coho	Pink
Gillnet	-	-	116
Purse Seine	-	-	101,310
Reef Net	17**	924	29,223
Total	17*	924*	137,914*

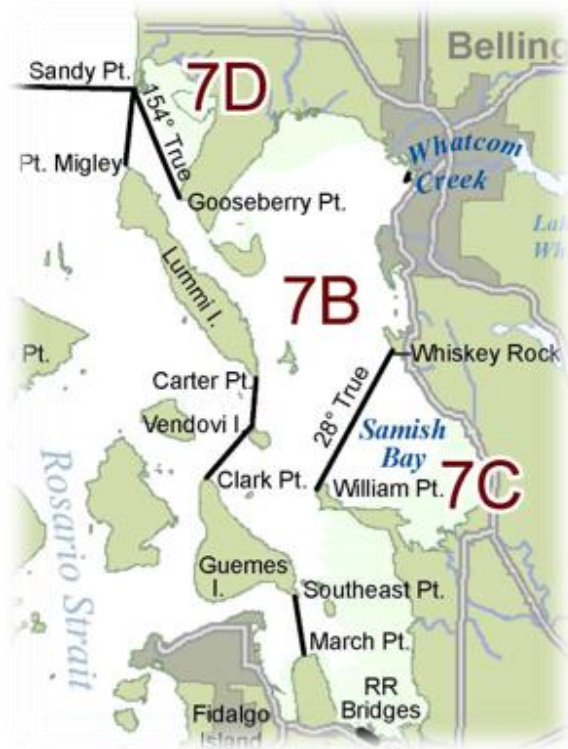
*2023 numbers are preliminary and subject to change

** Hatchery-origin, reported via logbook

2023 Fishery At-a-Glance

- Opened: Weeks 34 – 36
- Limited PS effort, due to low market value.
- Fishery closed: Fraser return updated below ~ 1M threshold.





Areas 7B & 7C – Bellingham and Samish Bay

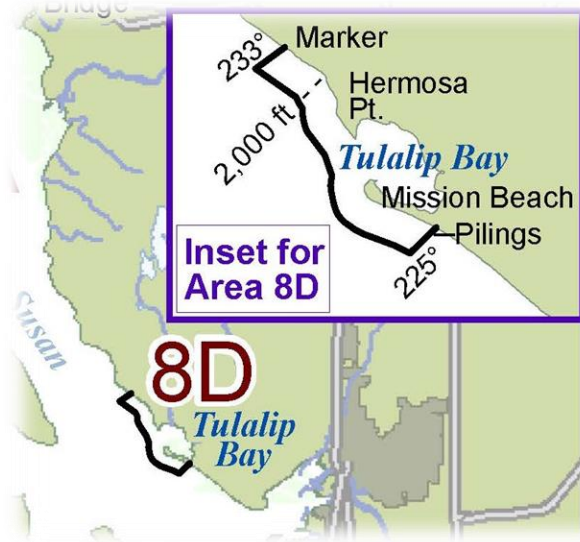
Areas 7B/7C				
	<u>Chinook</u>	<u>Coho</u>	<u>Chum</u>	<u>Pink</u>
Gillnet	9,740	1,457	1,162	53
Purse Seine	251	-	-	56
Total	9,991*	1,457	1,162*	109*

*2023 numbers are preliminary and subject to change

2023 Fishery At-a-Glance

- Opened:
 - Chinook Weeks 33 – 38
 - Coho Weeks 35 – 43
 - Chum Weeks 44 – 49
- Purse Seine effort in 7C





Area 8D		
	<u>Coho</u>	<u>Pink</u>
Gillnet	320	2
Purse Seine	-	-
Total	320*	2*

*2023 numbers are preliminary and subject to change

Area 8D –Tulalip Bay

2023 Fishery At-a-Glance

- Opened: Coho Weeks 38 – 43





Area 9A – Port Gamble Bay

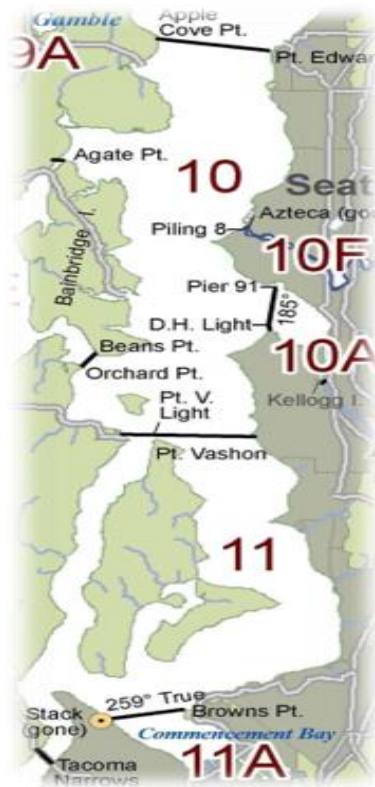
Area 9A – Skiff Gillnet	
Year	<u>Coho</u>
2023*	5,964
2022	1,512
2021	259
2020	804
2019	54
2018	66

*2023 numbers are preliminary and subject to change

2023 Fishery At-a-Glance

- Opened: Weeks 33 – 44
- Two creek closures in effect
- Average effort, high harvest rate
- Catch 694% above 3yr running avg.





Areas 10/11 - Seattle, East and West Passage

Areas 10/11			
	<u>Coho</u>	<u>Chum</u>	<u>Pink</u>
Gillnet	-	2,304	147
Purse Seine	-	5,211	91,274
Total	-*	7,515*	91,421*

*2023 numbers are preliminary and subject to change

2023 Fishery At-a-Glance

- Pre-season Forecast: 350,218 chum
- Final agreed to ISU: 264,788
- Opened: Week 42 - Limited Participation
- Closed remainder of season due to low chum abundances





Area 12A – Beach Seine	
Year	Coho
2023*	13
2022	4
2021	64
2020	171
2019	37
2018	973

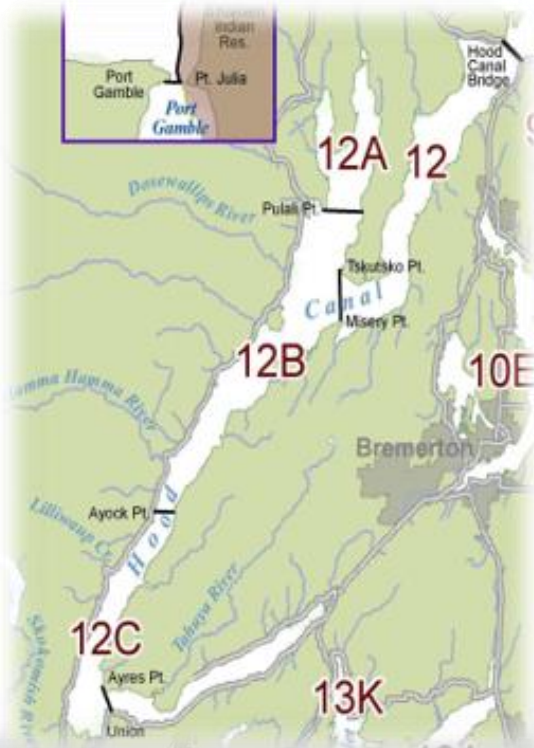
*2023 numbers are preliminary and subject to change

Area 12A – Quilcene Bay

2023 Fishery At-a-Glance

- Opened: Weeks 35 - 40 – Full schedule
- Limited effort





Areas 12/12B		
	<u>Coho</u>	<u>Chum</u>
Gillnet	2	6,827
Purse Seine	10	44,270
Total	12*	51,097*

*2023 numbers are preliminary and subject to change

Area 12/12B – Hood Canal

2023 Fishery At-a-Glance

- Pre-season Forecast: 231,153
- Final ISU: 231,153
- Opened: Weeks 42 – 45
- In-season restrictions: Hazel Point and 12C, and coho release requirements.





Area 12C – Hoodsport Hatchery Zone

- **2023 Fishery At-a-Glance**
- Pre-season Forecast: 231,153
- Final ISU: 231,153
- Opened: Weeks 42 – 45
- In-season restrictions: Hazel Point and 12C, and coho release requirements.

AREA 12C – BEACH SEINE		
Year	Chinook	Pink
2023*	5,886	312
2022	8,281	-
2021	6,084	1,362
2020	8,067	-
2019	7,303	2,148
2018	9,978	-

*2023 numbers are preliminary and subject to change





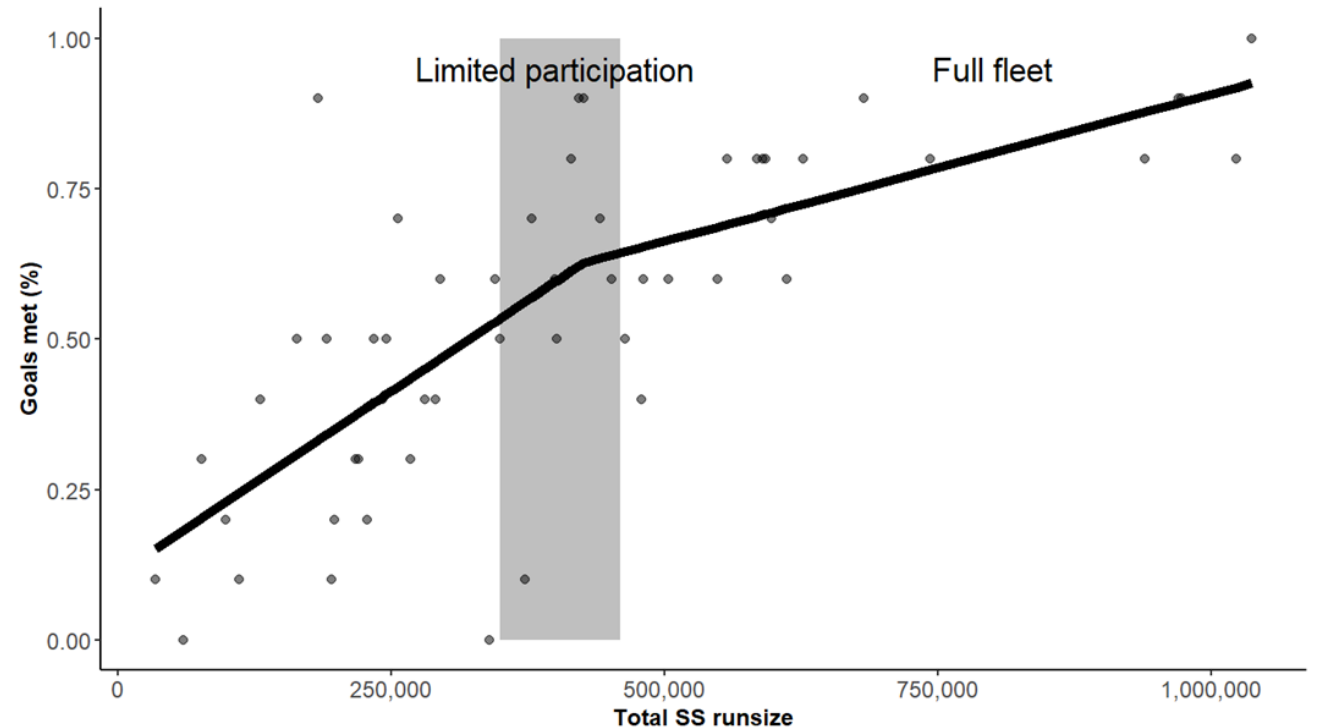
Limited Participation Review



Area 10/11 Limited Participation Chum Fishery

Goal of Limited Participation (LP):

- Access a harvestable share at low abundances, while meeting escapement goals
- A break-point analysis identified a harvestable share at run-sizes 350 – 460k
- Calculated LP weekly share to be 14,000 chum



Area 10/11 Limited Participation Chum Fishery

Selection:

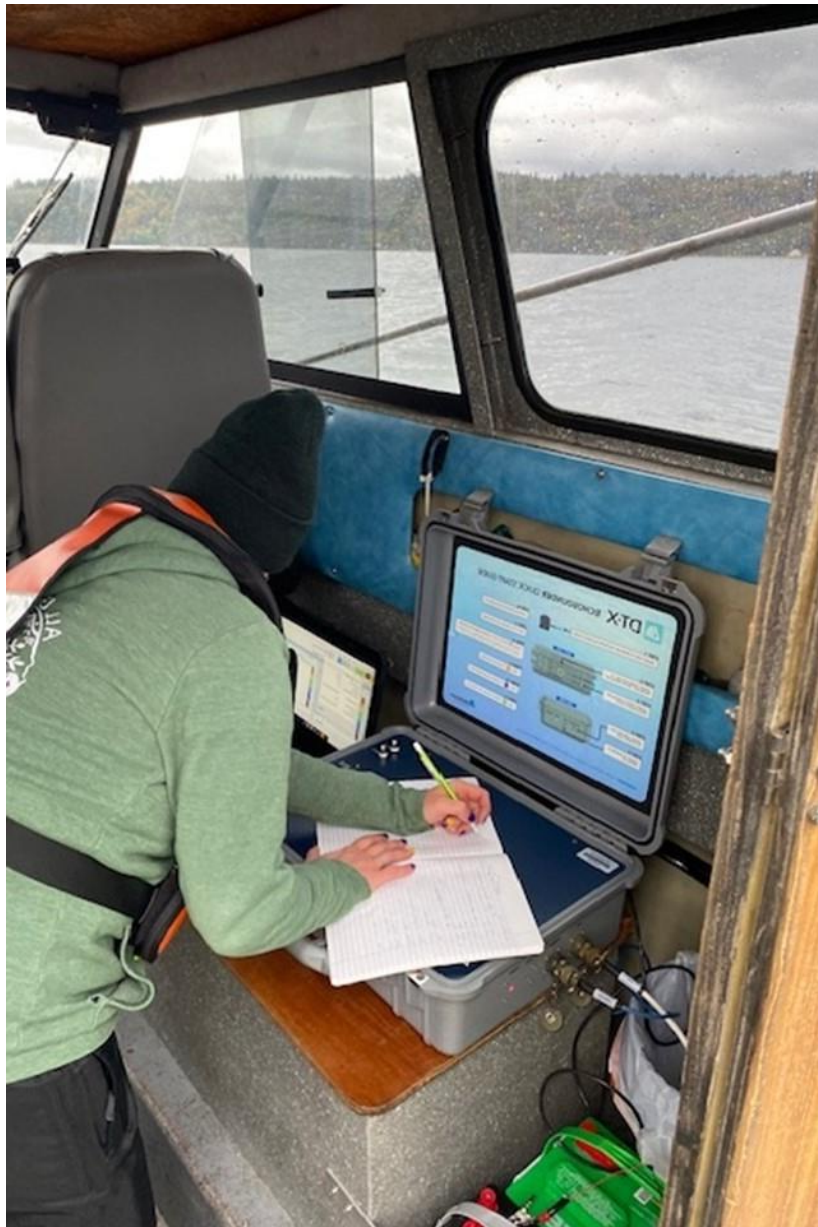
- Ten gillnet vessels were selected for a trip limit of 400 chum
- Six purse seine vessels were selected for a trip limit of 1,600 chum
- Limited Participation vessels were randomly selected preseason, for all weeks without replacement





Data Collection, Research, Genetic Sampling, and Summaries





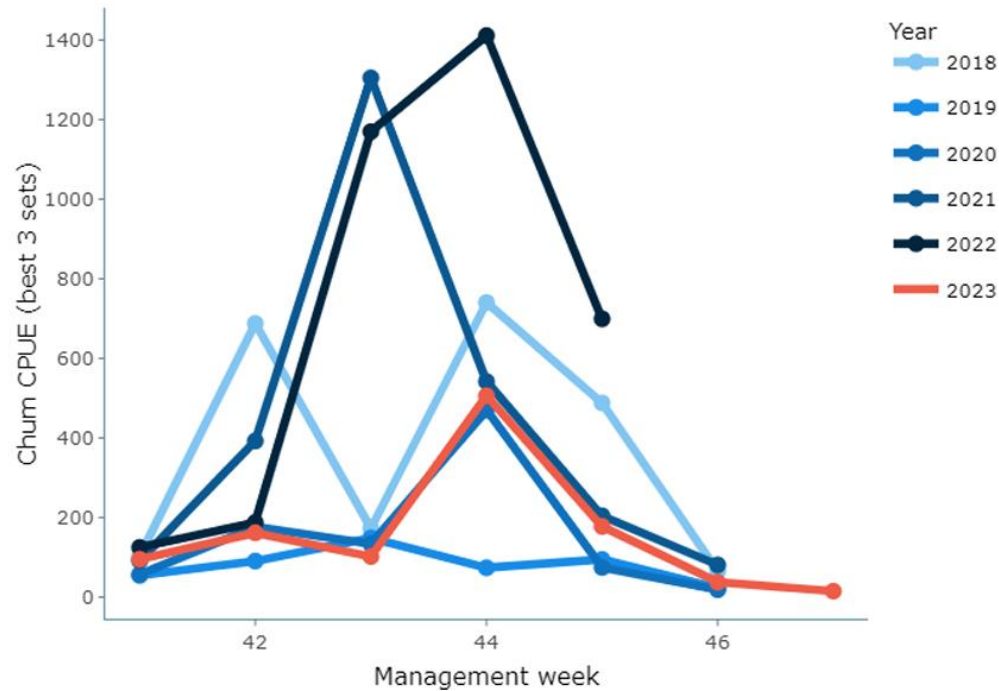
Test Fisheries and Data Collection: Apple Cove Test Fishery (ACP)

- ACP Test Fishery operated weeks 41 – 47.
- The fishery was extended to week 47 for GSI collection
- Sonar was conducted in conjunction with the ACP fishery to capture abundance in the water column



In-Season Test Fisheries and Data Collection

Apple Cove Test Fishery (ACP)





Test Fisheries and Data Collection: Area 11



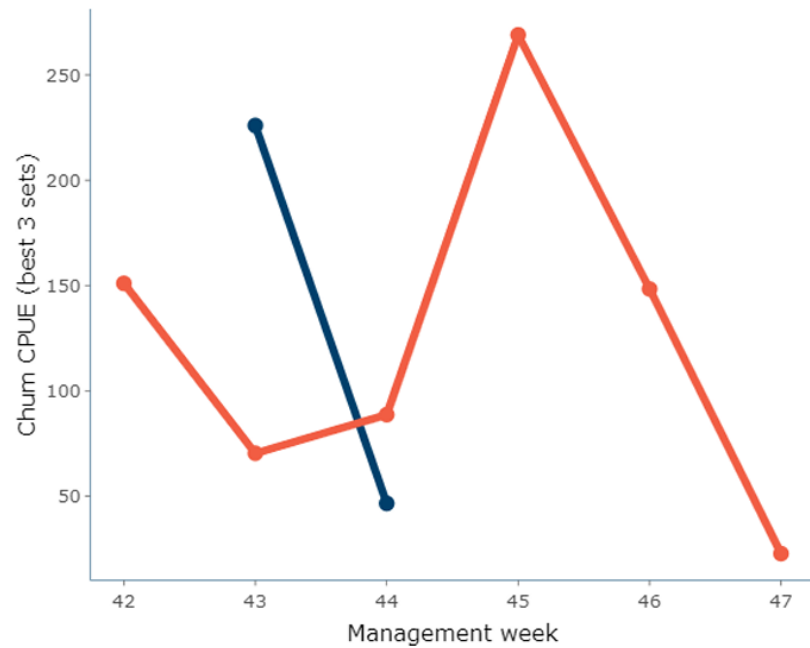
- Test Fisheries operated in both East and West Pass for weeks 42 – 47
- WDFW staffed the vessel. Chum were sampled for scales/length and GSI
- Identical methodology as ACP Test Fishery



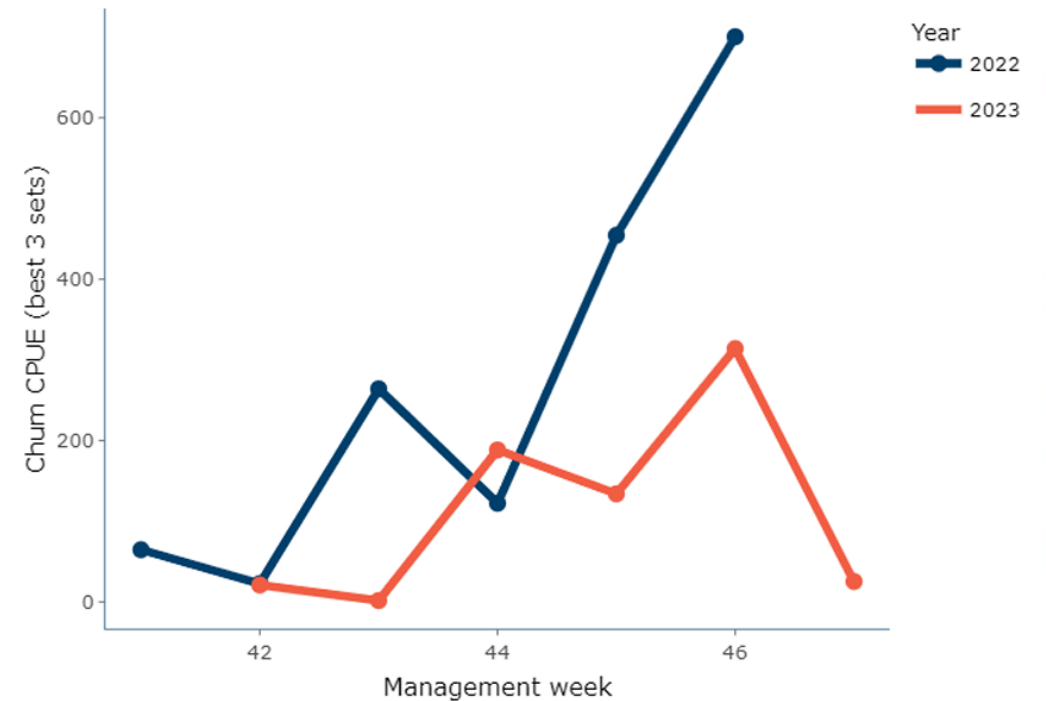
In-Season Test Fisheries and Data Collection

Area 11 Test Fisheries

East Pass

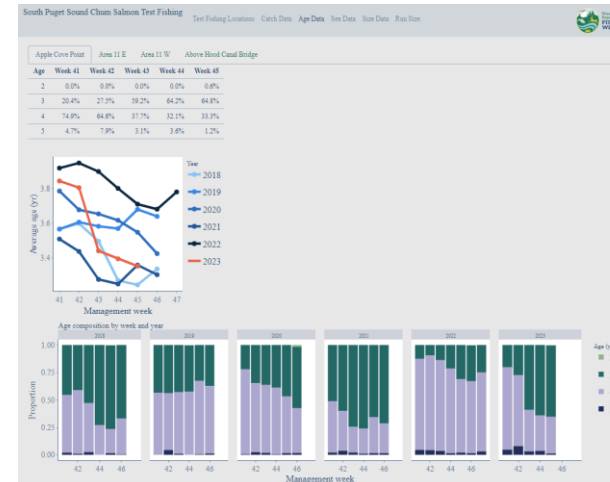
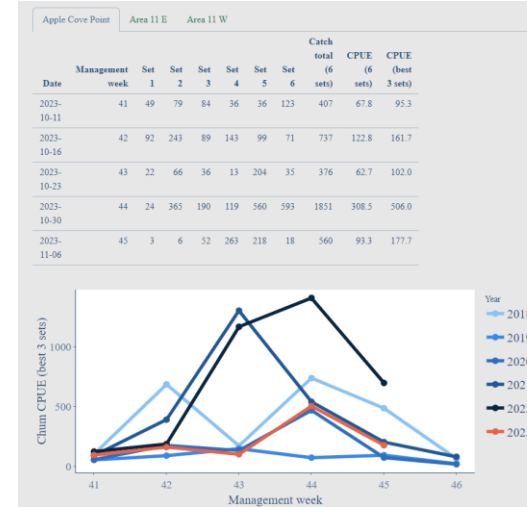
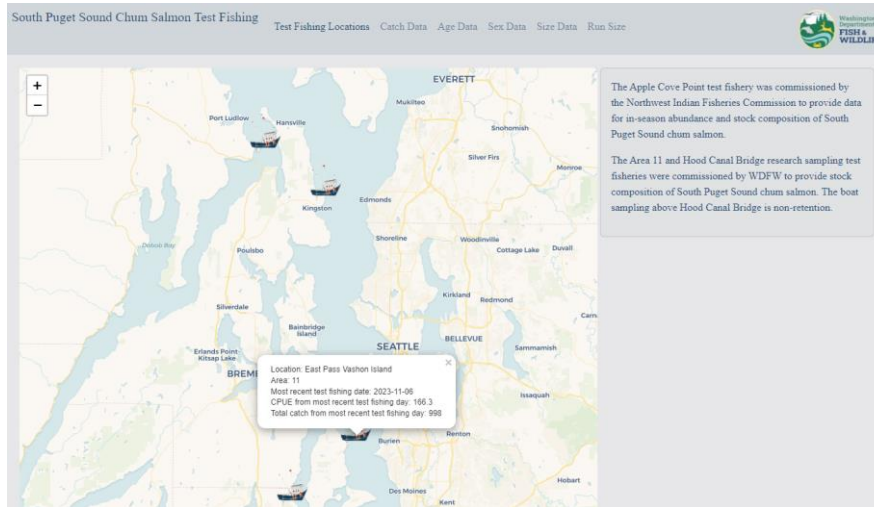


West Pass



Commercial Fishery Application Tool

 Still under development...



Test Fisheries and Data Collection: Area 9 (North Hood Canal)

- Test Fishery operated weeks 42 – 46
- Fished near Hood Head, north Hood Canal Area 9
- Non-retention sampling, targeting 200 chum per week
- Chum were sampled for scales, sex, length and GSI



Test Fisheries and Data Collection

Chum Genetic Stock Identification (GSI)

In-season objectives:

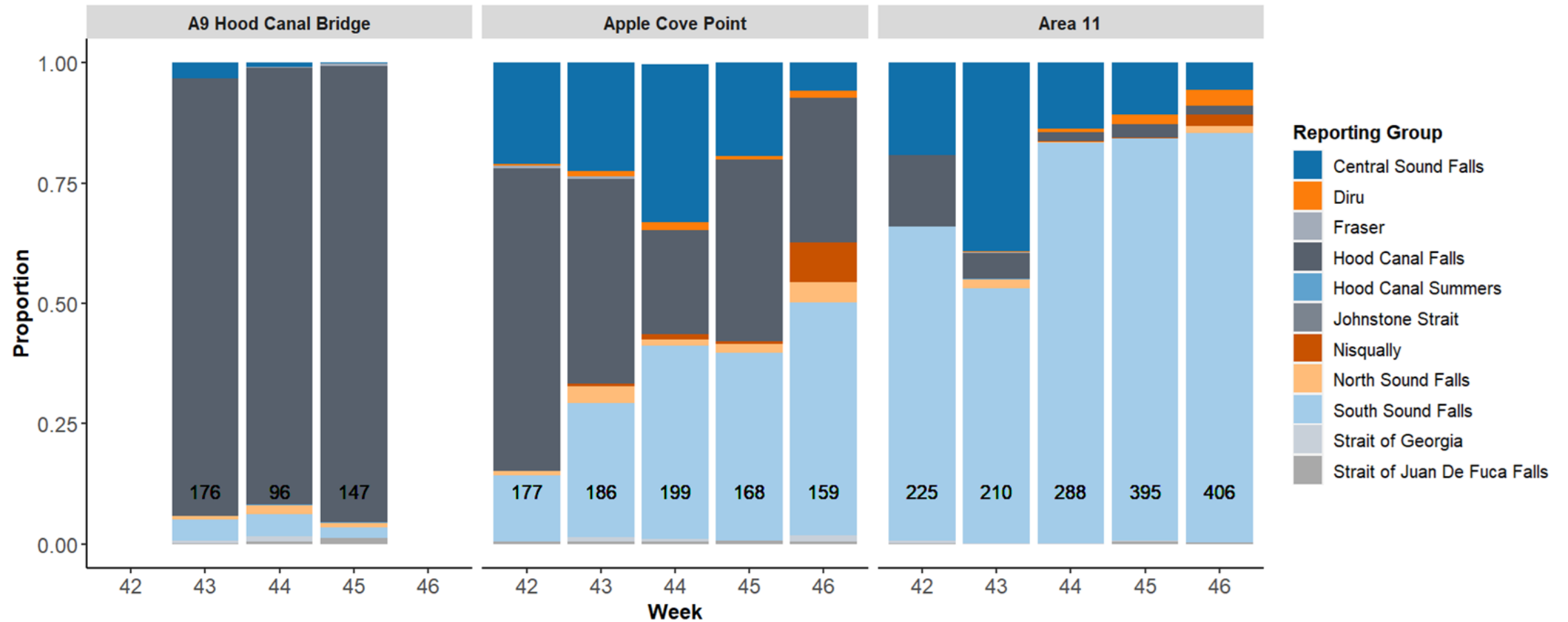
- Assess stock specific impacts
- Reduce impacts on stocks of concern, maintaining conservation goals
- Evaluate “non-local” composition

Long-term objectives:

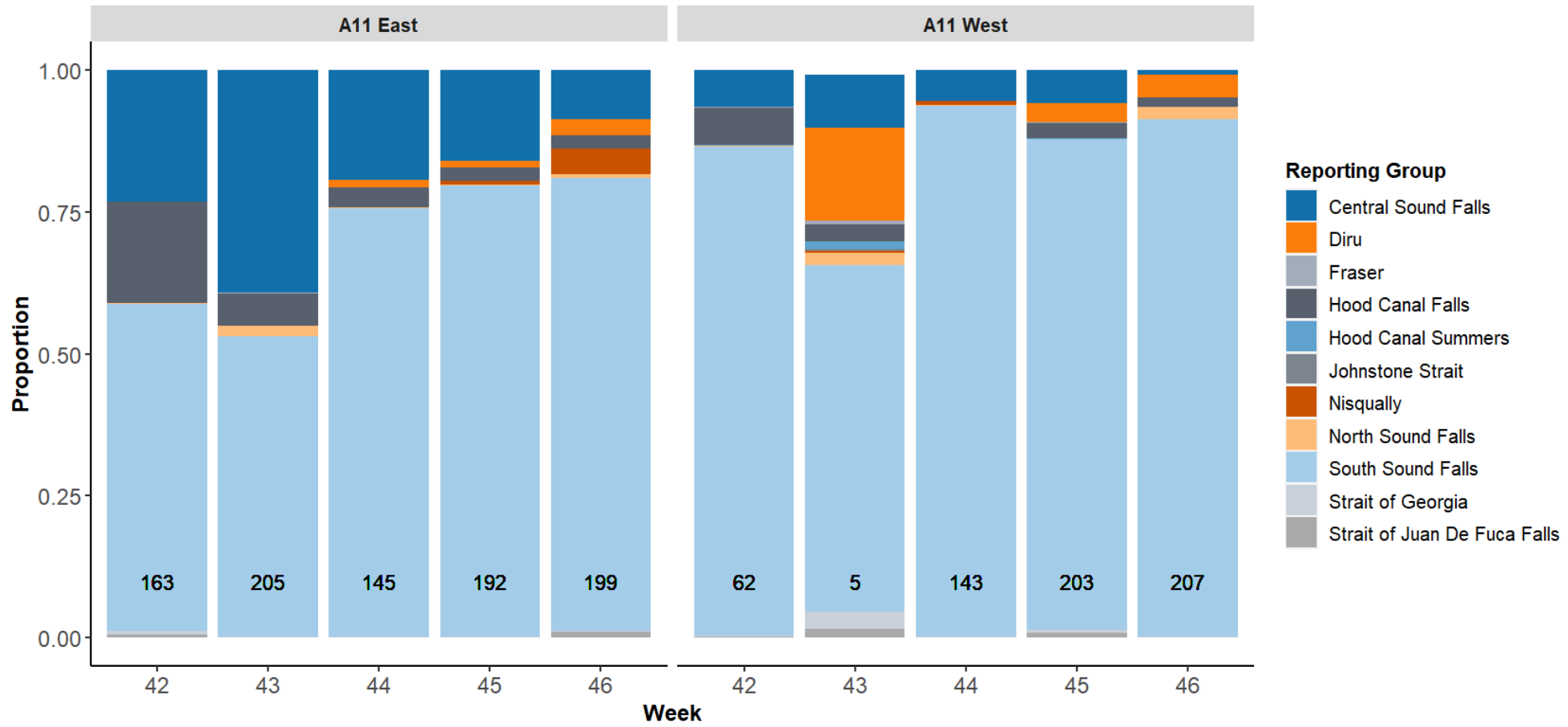
- Inform run reconstructions to better assess population trends and fishery impacts
- Predict pre-terminal timing and location of stock groups
- Predict run sizes of stock groups



Test Fisheries and Data Collection: Chum GSI



Test Fisheries and Data Collection: Chum GSI



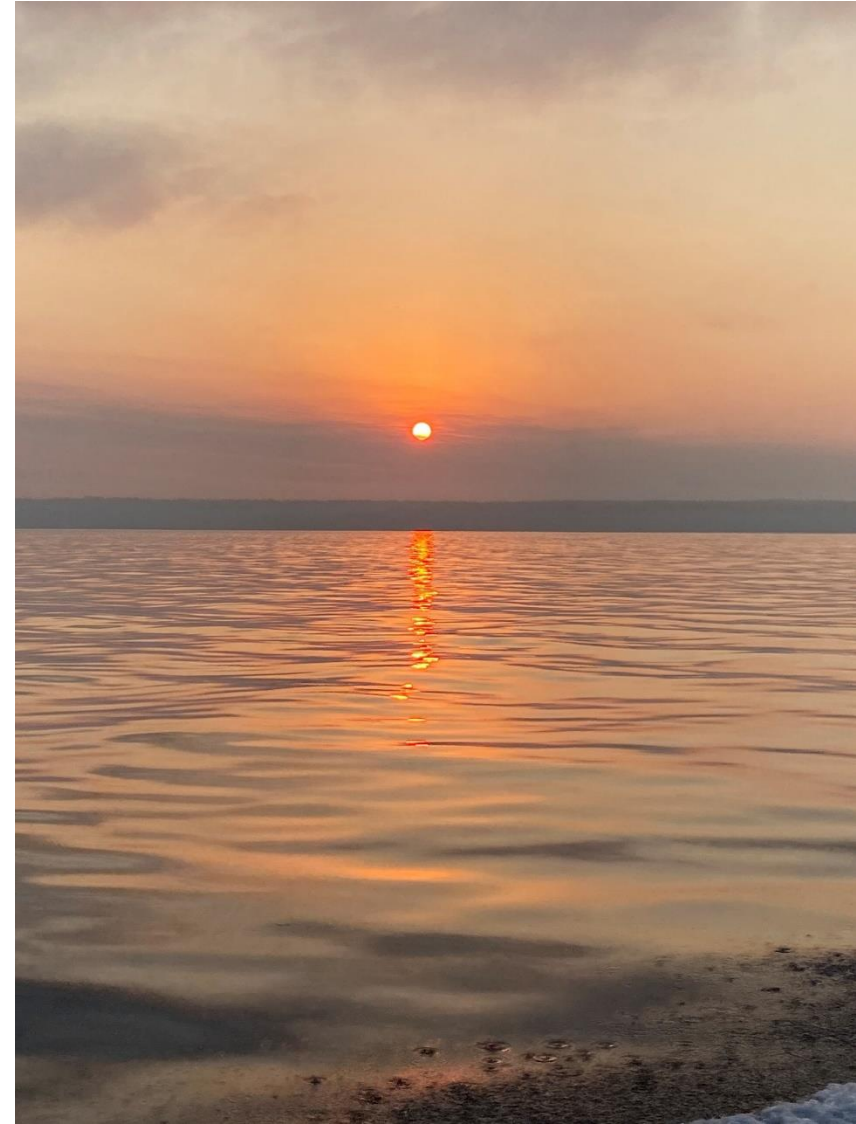
Test Fisheries and Data Collection: Hydroacoustic Surveys

2022

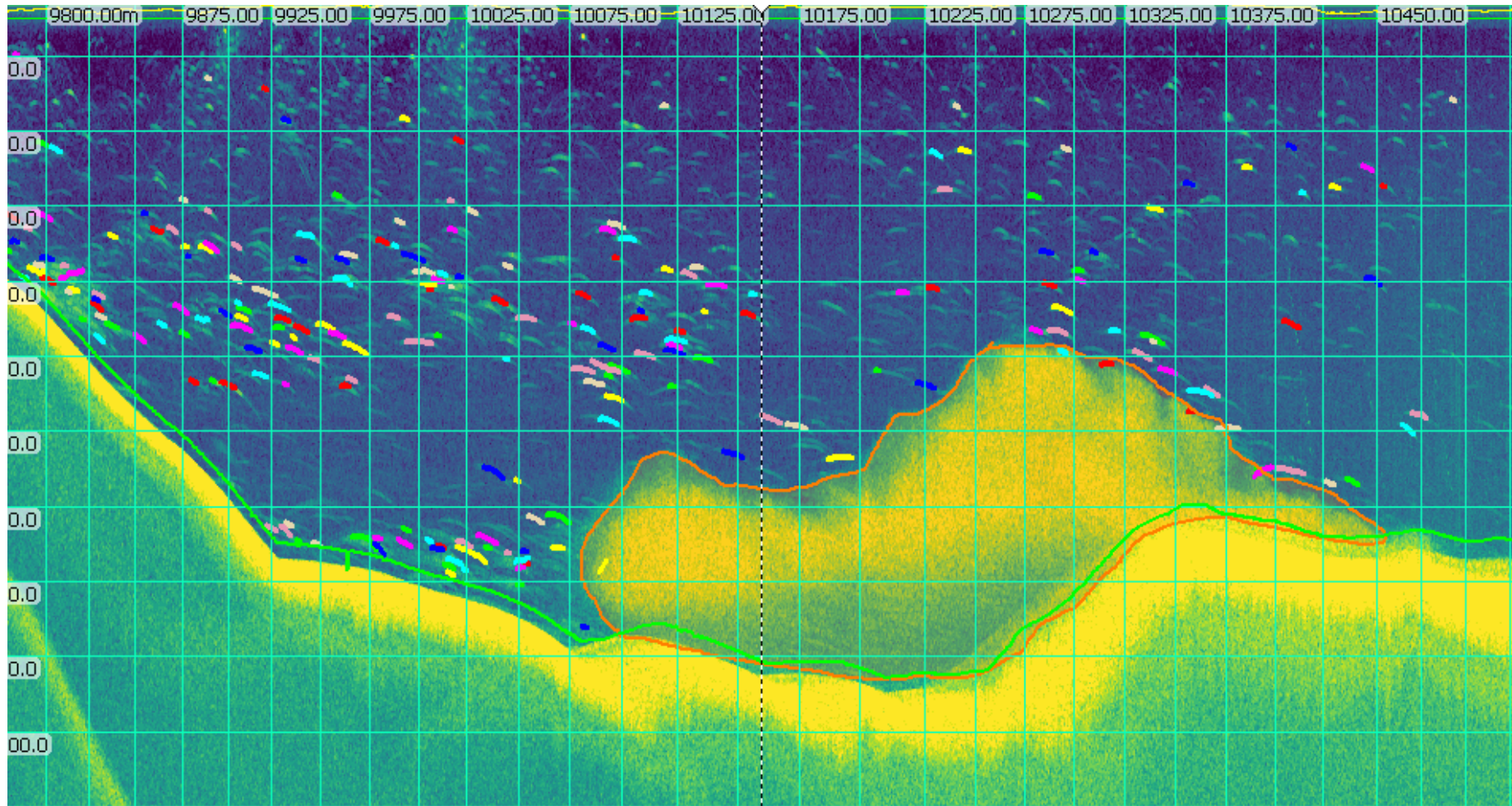
- 6 Surveys completed
- All days ACP was fishing in October were also sampled acoustically.
- One November survey missed due to weather

2023

- All weeks surveyed
- “New” vessel (WDFW 547) more stable platform, easier to survey in adverse conditions



Test Fisheries and Data Collection: Hydroacoustic Surveys

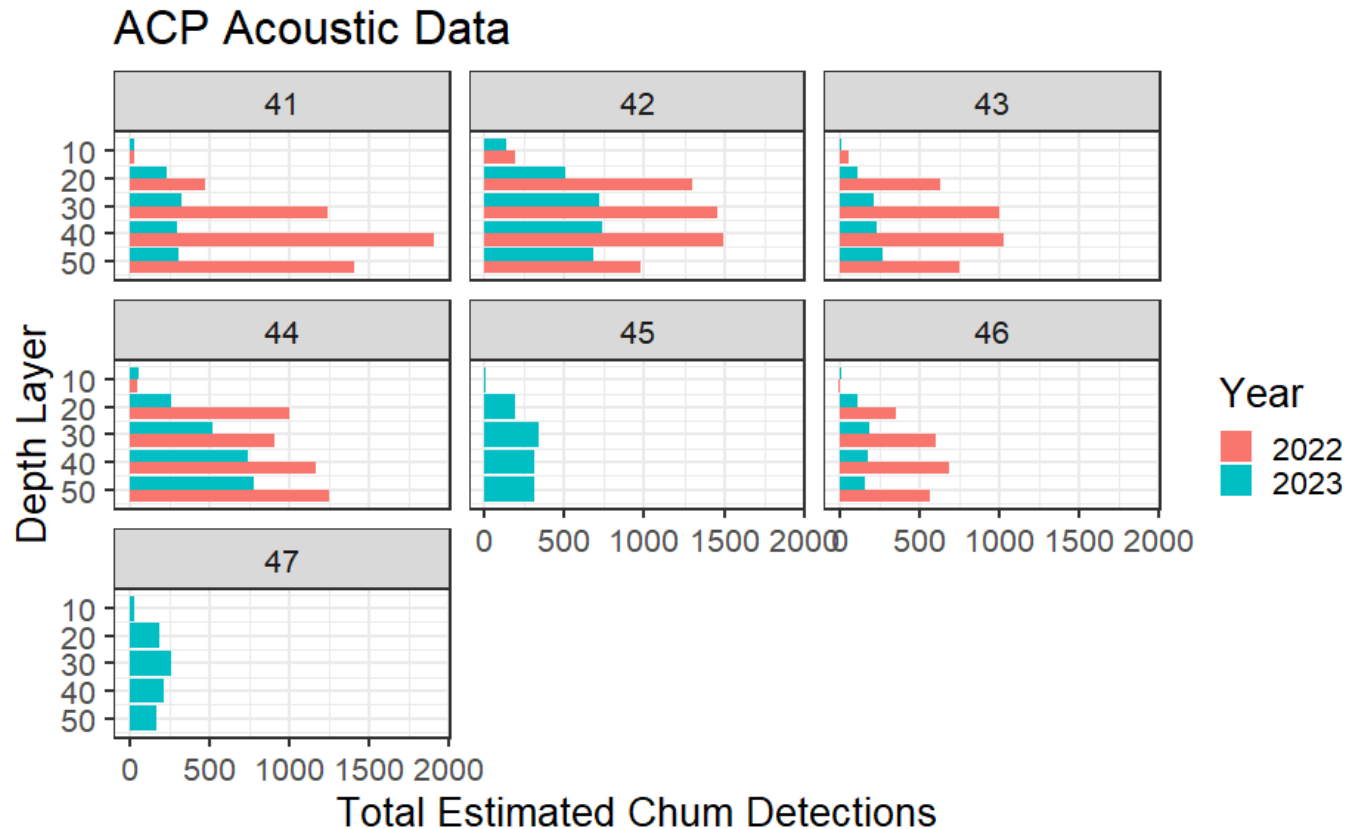


ACP Acoustic Chum Detections by Week

Total estimated chum targets detected over ACP survey

Data binned by 50m depth intervals

Similar pattern due to high proportion of chum



Preliminary Results

- Acoustic Survey is proving to be a quick, effective way to survey entirety of ACP historic test fishing area
 - Entire survey takes ~4 hours
 - Including set up / breakdown
- Test fishing catch data successfully used to inform acoustic detections
- More total detections in 2022 vs 2023
 - Pattern consistent with test fishing data





Next Steps

- Use length data from ACP test fishery to fine-tune target strength of Chum
 - TS based on length using standard formulas
- Continue to fine-tune using ACP test fishery data to determine proportion of acoustic targets that are Chum in mixed aggregations
 - Standard methodology used by NOAA, etc to assign species to acoustically detected targets



Test Fisheries and Data Collection:

On-board fishery observing:

- Standard fisheries observing for both Purse Seine and Gillnet
- Observers monitored fisheries in areas:
7/7A, 7B/C, 10 & 11, 12/12B, and 12C Hoodspout
- On-board data collection effort for 2023:
- Increased representation of fleet effort, by-catch distribution, and harvest rate
- GSI collection in South Sound (Areas 10 and 11) remained a high priority



Test Fisheries and Data Collection: On-board fishery observing

- Gillnets were monitored for bycatch and harvest rate via our research vessels
 - Combined vessel effort counts with “creeled” interviews
 - Collected data on the geographic distribution of our gillnet Fleet
 - WDFW used this methodology where GSI sampling was not a high priority
- Increased Area7A effort counts per agreement through Fraser Panel



2024 PSC Test Fishing Opportunity

CONTRACT OPPORTUNITIES

The Pacific Salmon Commission regularly requests the services of contractors to support salmon stock assessment programs in British Columbia.

EXPRESSION OF INTEREST APPLICATIONS

Contractors are asked to submit completed applications provided below to the Pacific Salmon Commission. Further instructions on how to submit an application are contained within each document. Enquiries regarding the Expression of Interest should be directed to info@psc.org.

Test Fish Contractors

Registered fishing vessel owners are invited to submit a non-binding Expression of Interest to document their interest in providing charter services for the Pacific Salmon Commission's test fishing program. Note that this is not a request for proposal and procurement of charter services will be performed in a separate process.

For more information please see:

<https://www.psc.org/about-us/history-purpose/contract-opportunities/>



2024 Season and Preliminary NOF Schedule



2024 North of Falcon Meetings

- March 1 – OB2 Olympia, WA → Kick Off - Pre-season Forecast and Fisheries Discussion
- March 13 – OB2 Olympia, WA → North of Falcon #1
- March 28 - Lynwood, WA → North of Falcon #2
- April 6 - 11 – Seattle, WA → Pacific Fisheries Management Council – Salmon #2





Questions?

