

PS Rec Advisor Meeting

August 3, 2021



Meeting Agenda

- Recreational Fishing Updates
 - MA-6 Closure and Updates
 - MA-9 Closure and Updates
 - Other MA updates
 - Tulalip Bubble
- Additional Questions / Concerns



MA-6

For 7/1/21 – 8/1/21

Marine Area	Retained / Legal Chinook Encounters		Sublegal Encounters		Unmarked Encounters	
6	Encounter Estimate	6,843	Estimate	4,752	Estimate	2,896
	Encounter Limit	6,843	Encounter Limit	3,573	Encounter Limit	2,158
	Percent of Encounter Limit	100% *	Percent of Encounter Limit	133%	Percent of Encounter Limit	134%

- Closed as of midnight last night
- Management objective is *legal sized* Chinook encounters
- Increased effort with closures in 5 and 7

* Denotes management control(s)



MA-9

For 7/16/21 – 8/1/21

Marine Area	Retained / Legal Chinook Harvest		Sublegal Encounters		Unmarked Encounters	
9	Harvest Estimate	4,418	Estimate	5,334	Estimate	3,159
	Harvest Quota	4,700	Encounter Limit	7,317	Encounter Limit	2,110
	Percent of Harvest Quota	94% *	Percent of Encounter Quota	76%	Percent of Encounter Quota	150%

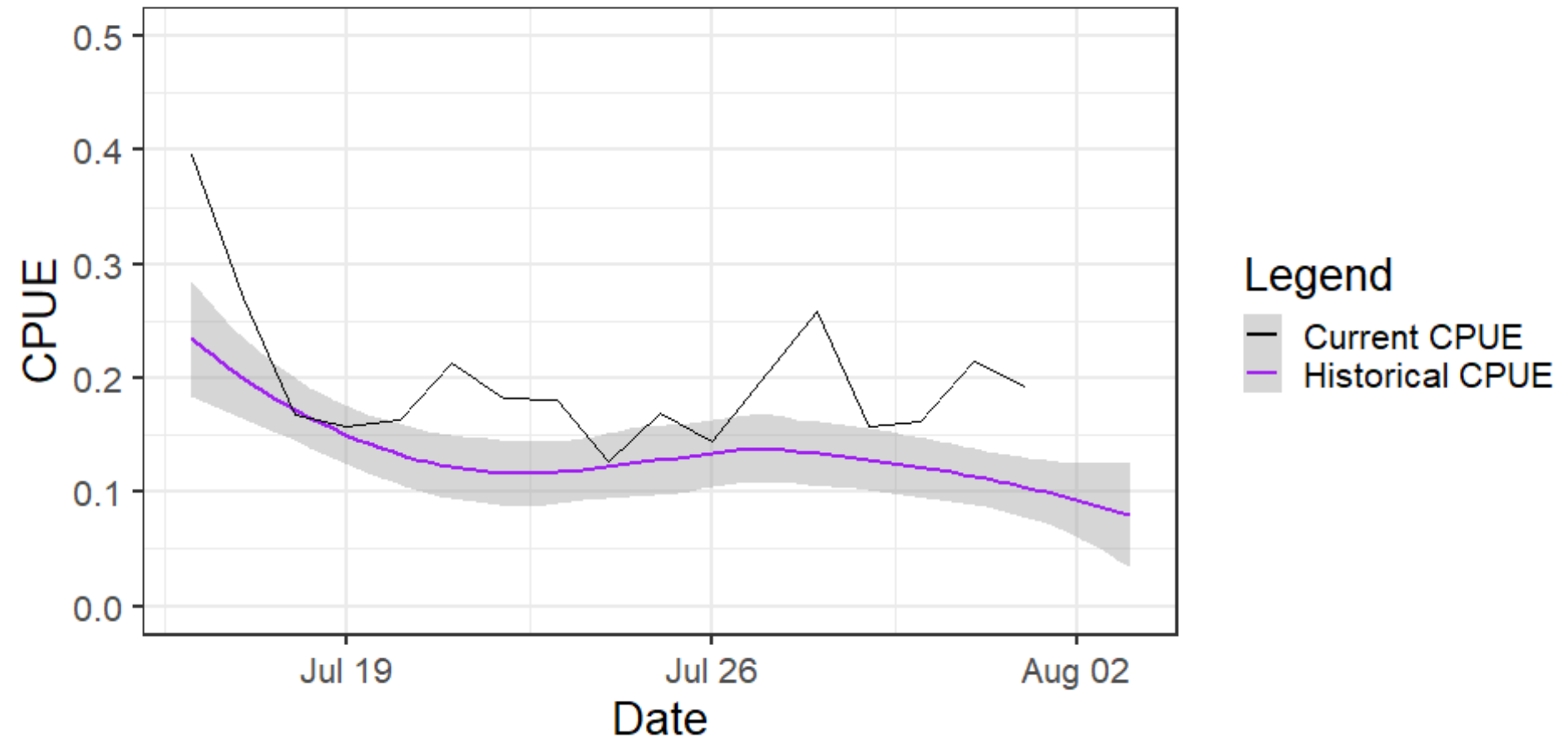
- Current catch total is 94% of available quota through Sunday.
- Timing of closure

* Denotes management control(s)



MA-9

Area 09 CPUE Comparison



MA-5

- Remains closed to Chinook retention
- Coho and Pink fisheries to continue as planned

MA-7

- MA-7 remains closed while we determine if there are impacts available for Coho / Pink fishery later in the season.
- There is no timeline for reopening at this time.



MA-10

For 7/16/21 – 7/25/21

Marine Area	Retained / Legal Chinook Harvest		Sublegal Encounters		Unmarked Encounters	
10	Harvest Estimate	410	Estimate	1179	Estimate	673
	Harvest Quota	3,718	Encounter Limit	6,592	Encounter Limit	2,586
	Percent of Harvest Quota	11% *	Percent of Encounters Quota	18% *	Percent of Encounters Quota	26%

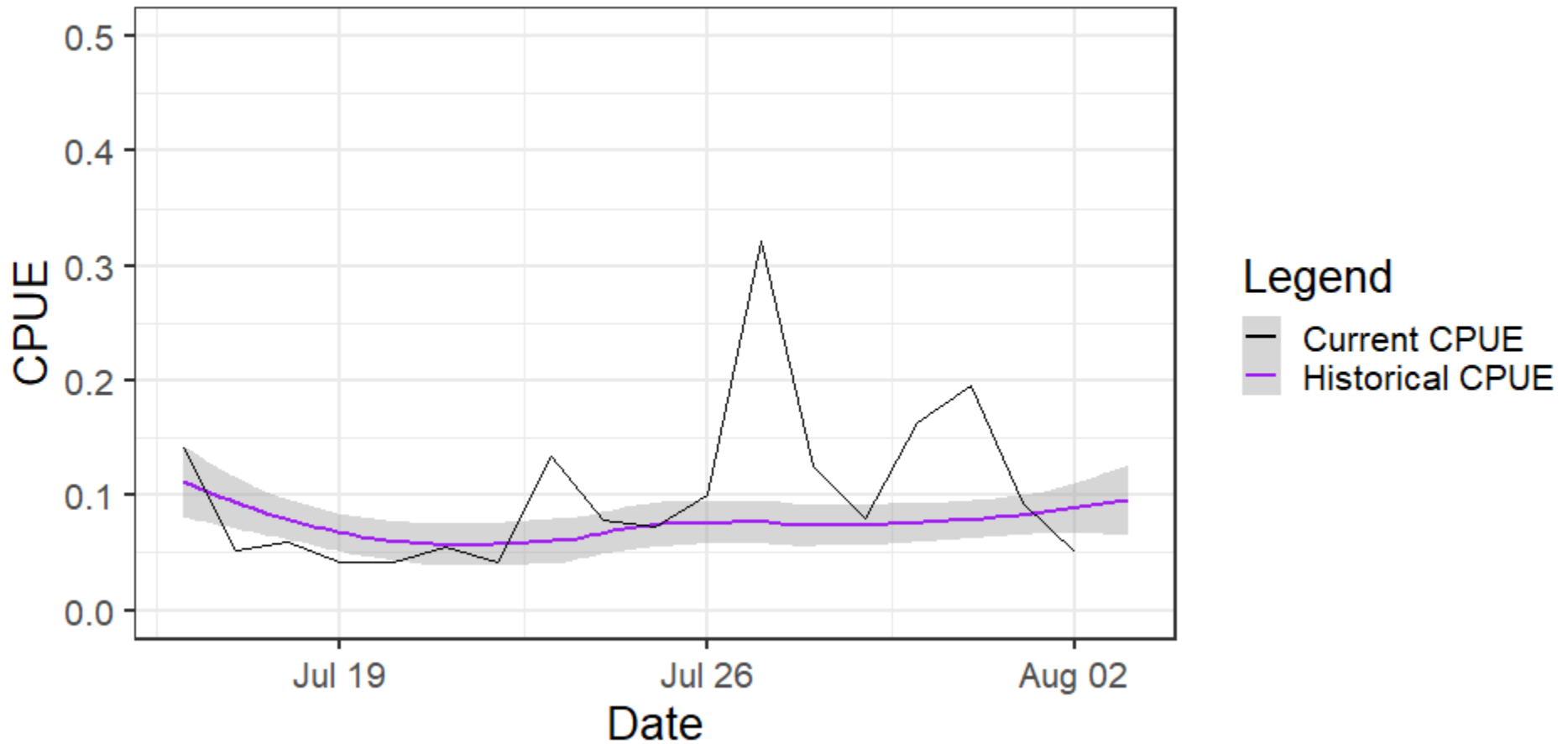
- CPUE increased since last week
- Update available soon!

* Denotes management control(s)



MA-10

Area 10 CPUE Comparison



MA-11

For 6/16/21 –7/25/21

Marine Area	Retained / Legal Chinook Harvest		Sublegal Encounters		Unmarked Encounters	
11	Harvest Estimate	1161	Estimate	1648	Estimate	824
	Harvest Quota	3,084	Encounter Limit	4,233	Encounter Limit	1,586
	Percent of Harvest Quota	38% *	Percent of Encounter Quota	39% *	Percent of Encounter Quota	52%

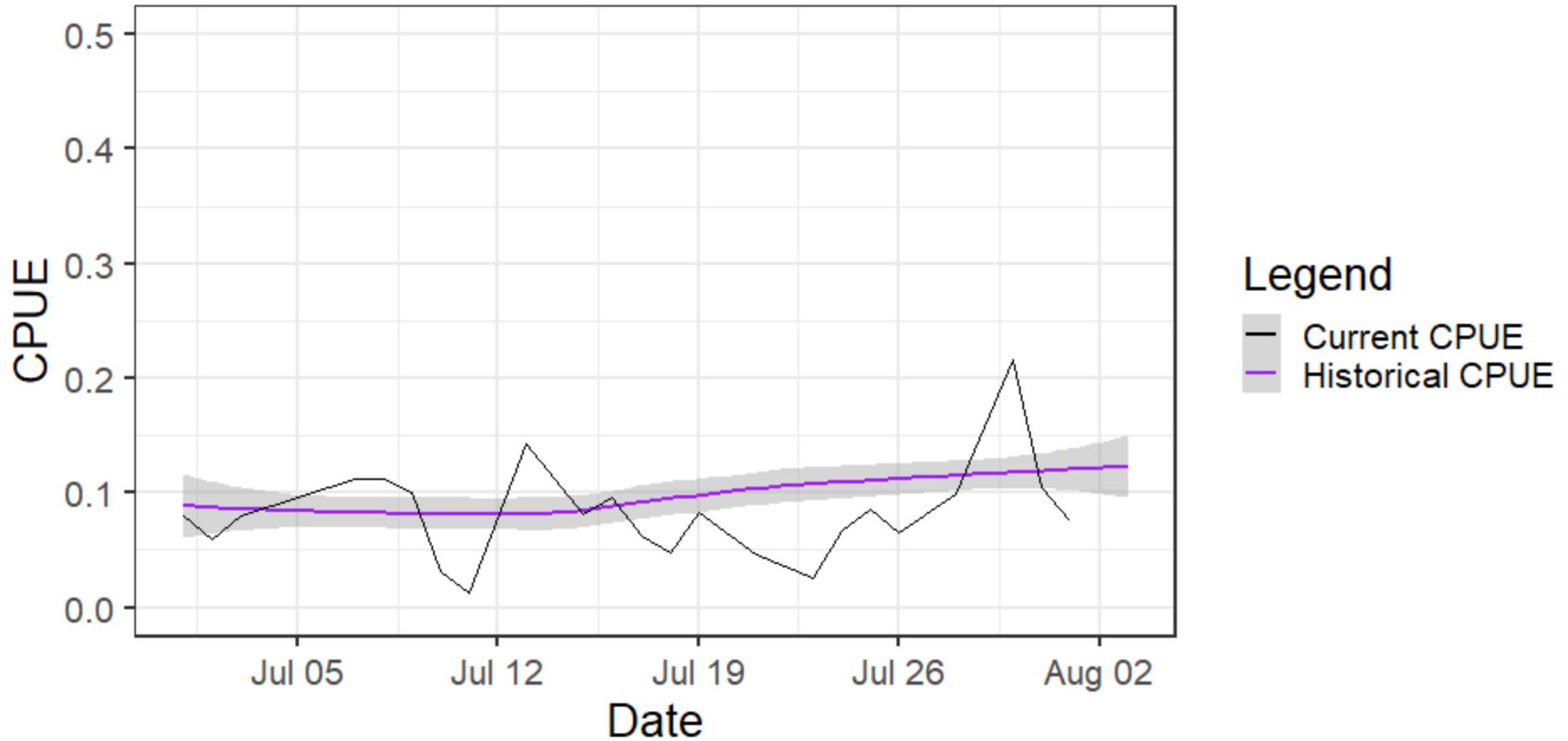
- CPUE has been relatively steady since the opening weekend.
- Update available soon!

* Denotes management control(s)



MA-11

Area 11 CPUE Comparison



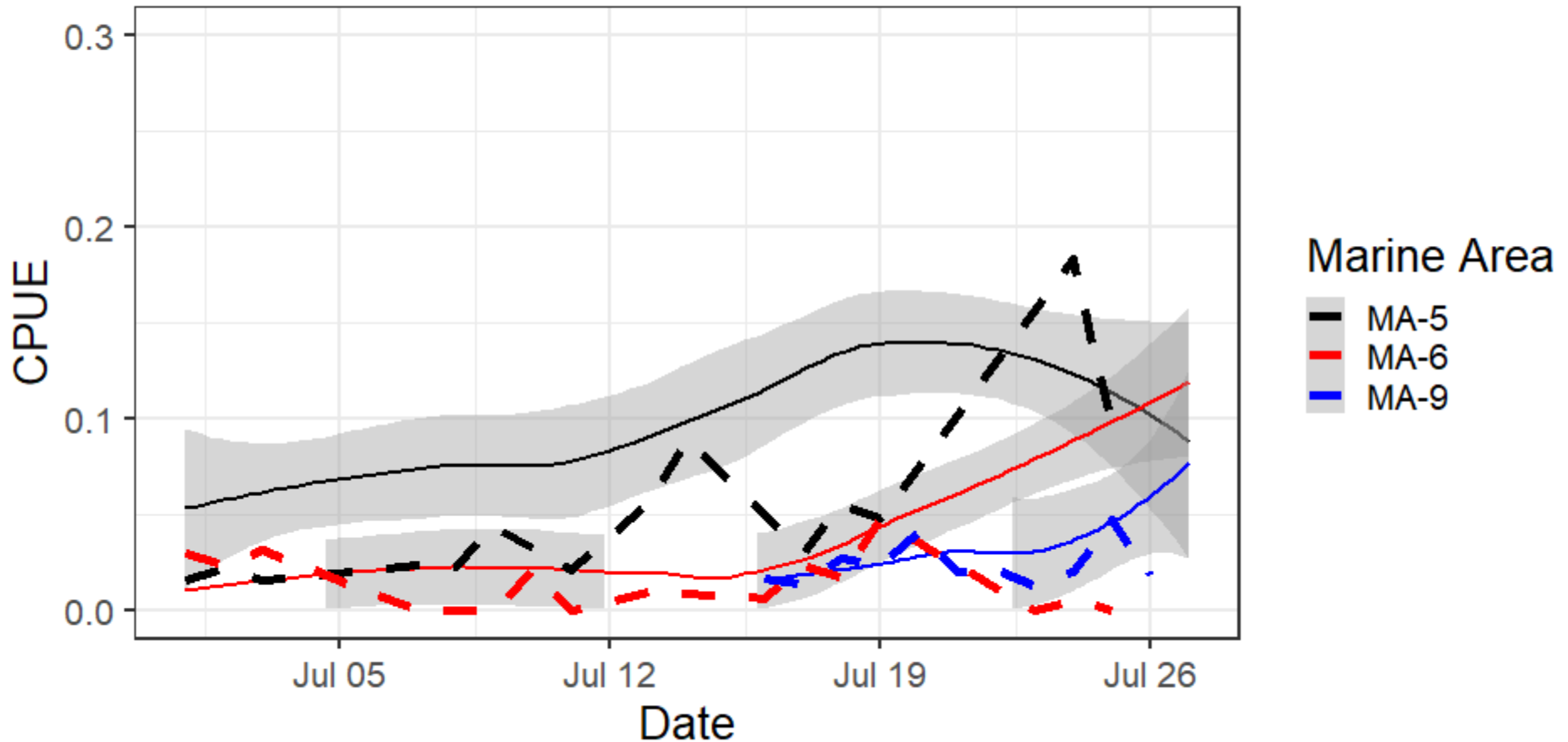
Tulalip Bubble

- Remains closed
 - Tulalip Bubble terminal fishery
 - Freshwater Chinook directed fisheries in the Snohomish Basin
 - Tulalip tribal fishery
- Broodstock concerns remain
 - Wallace-7/28: **2,721** hatchery, **20** wild
 - Pond Mortalities: **249** hatchery, **2** wild
- Broodstock Goals:
 - Wallace- 5,000
 - Bernie Gobin – 1,700
- Co-managers will continue to monitor returns and evaluate scenarios for possible fishery opportunities.



Pink Salmon CPUE MA -5,-6, and -9

Pink Salmon CPUE Comparison



Questions/Comments?

