

PS Rec Updates

September 2, 2021



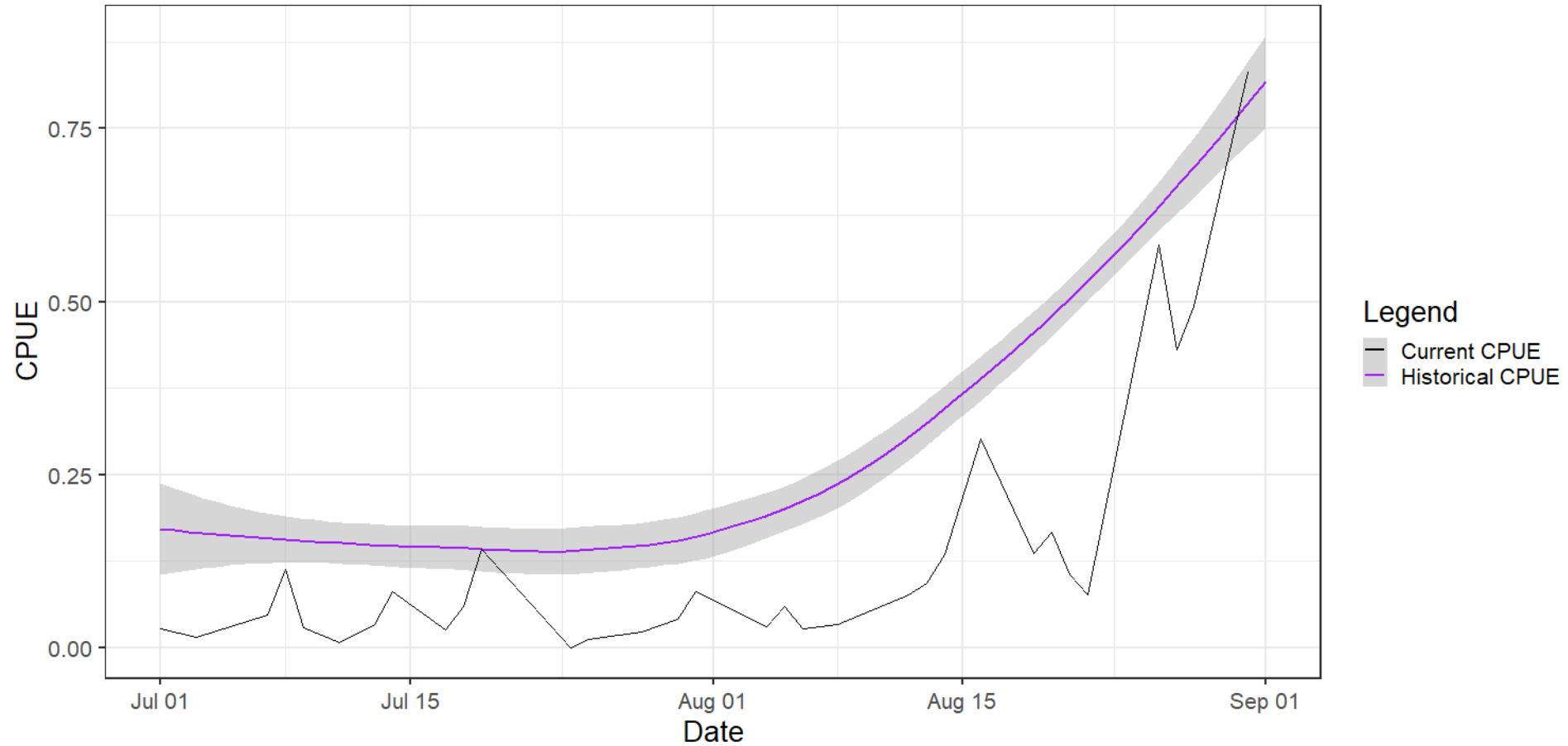
Meeting Agenda

- PS Rec Fishing updates
 - Coho
 - Pink
- MA-7 Update
- Additional Questions / Comments



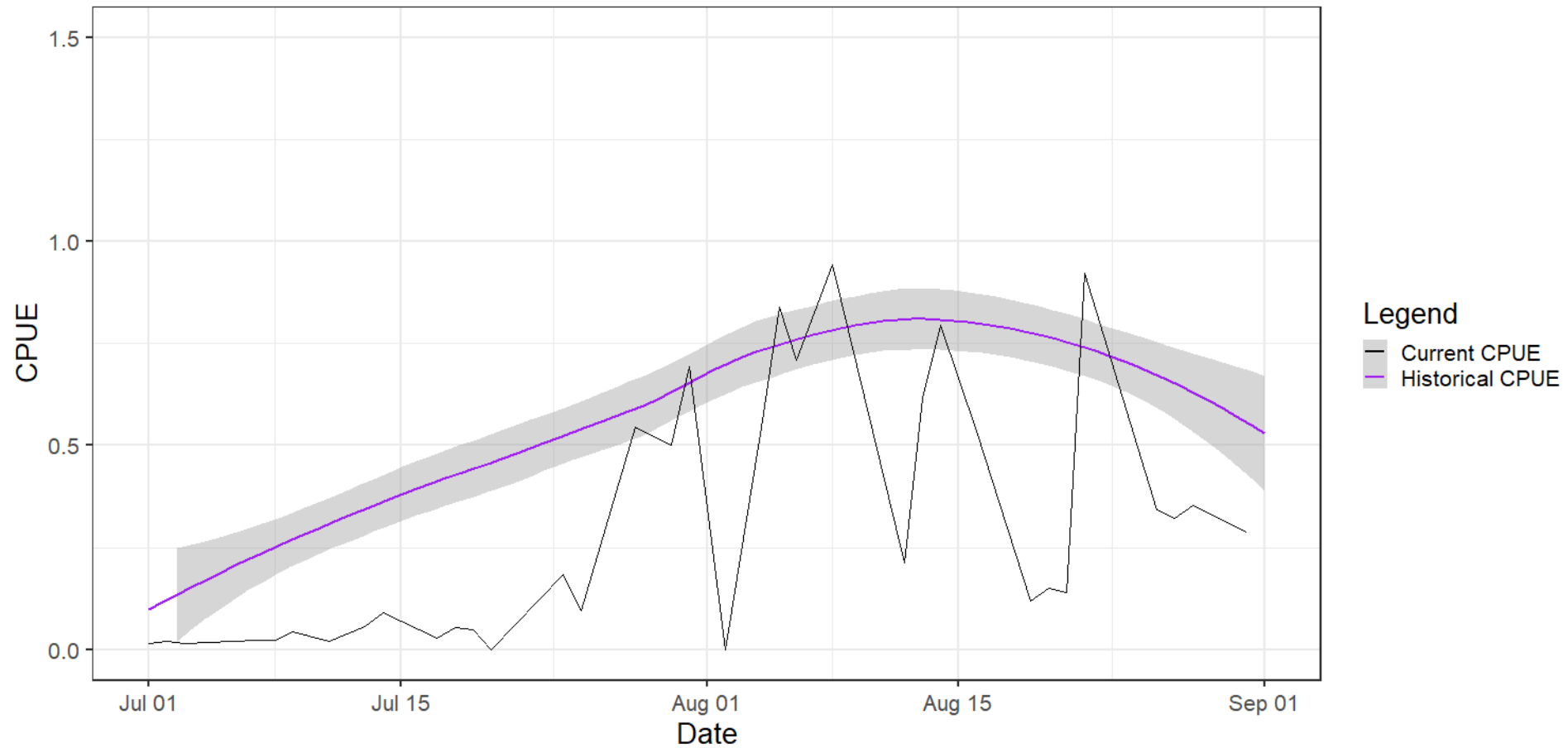
MA-5 Coho

Area 05 Coho CPUE Comparison



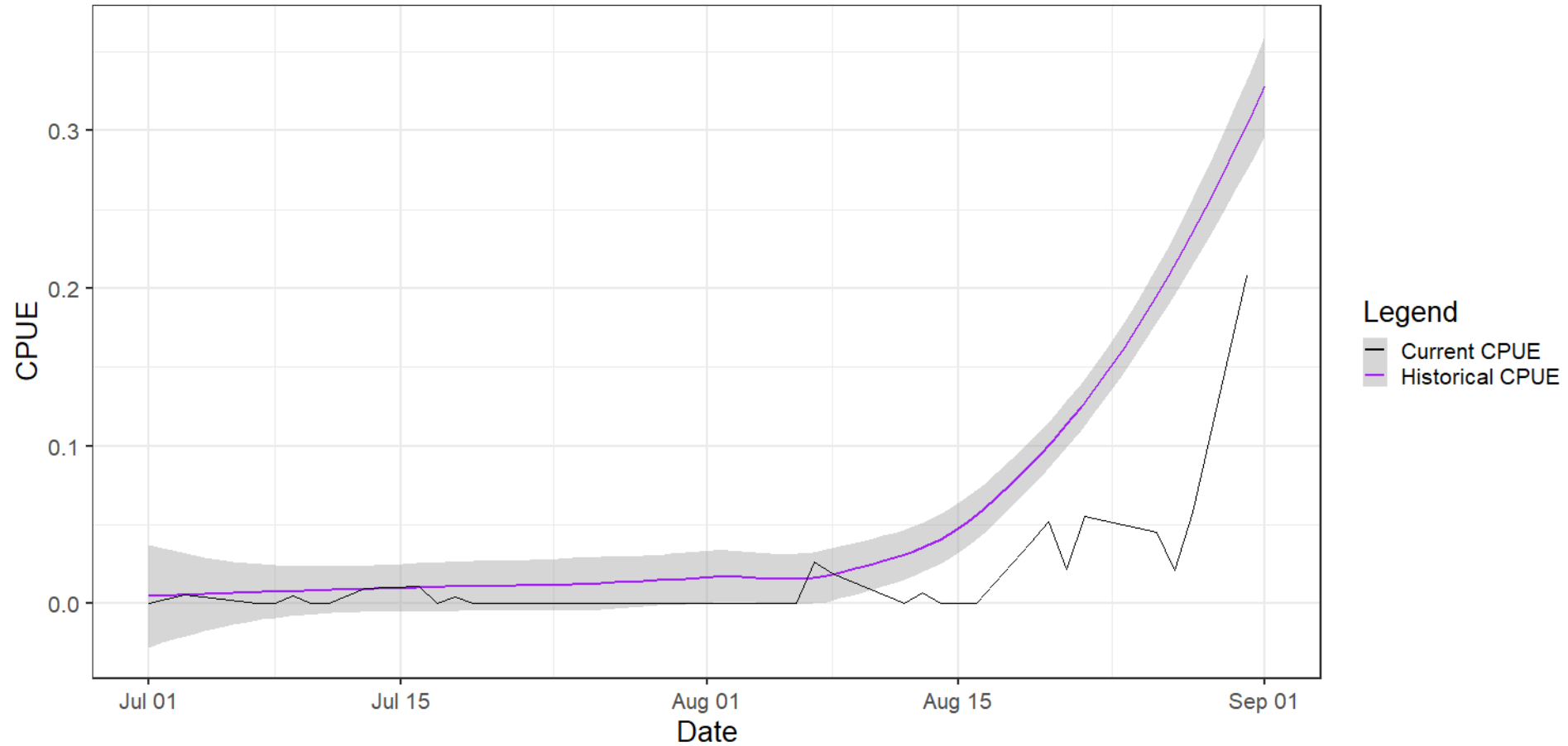
MA-5 Pink

Area 05 Pinks CPUE Comparison



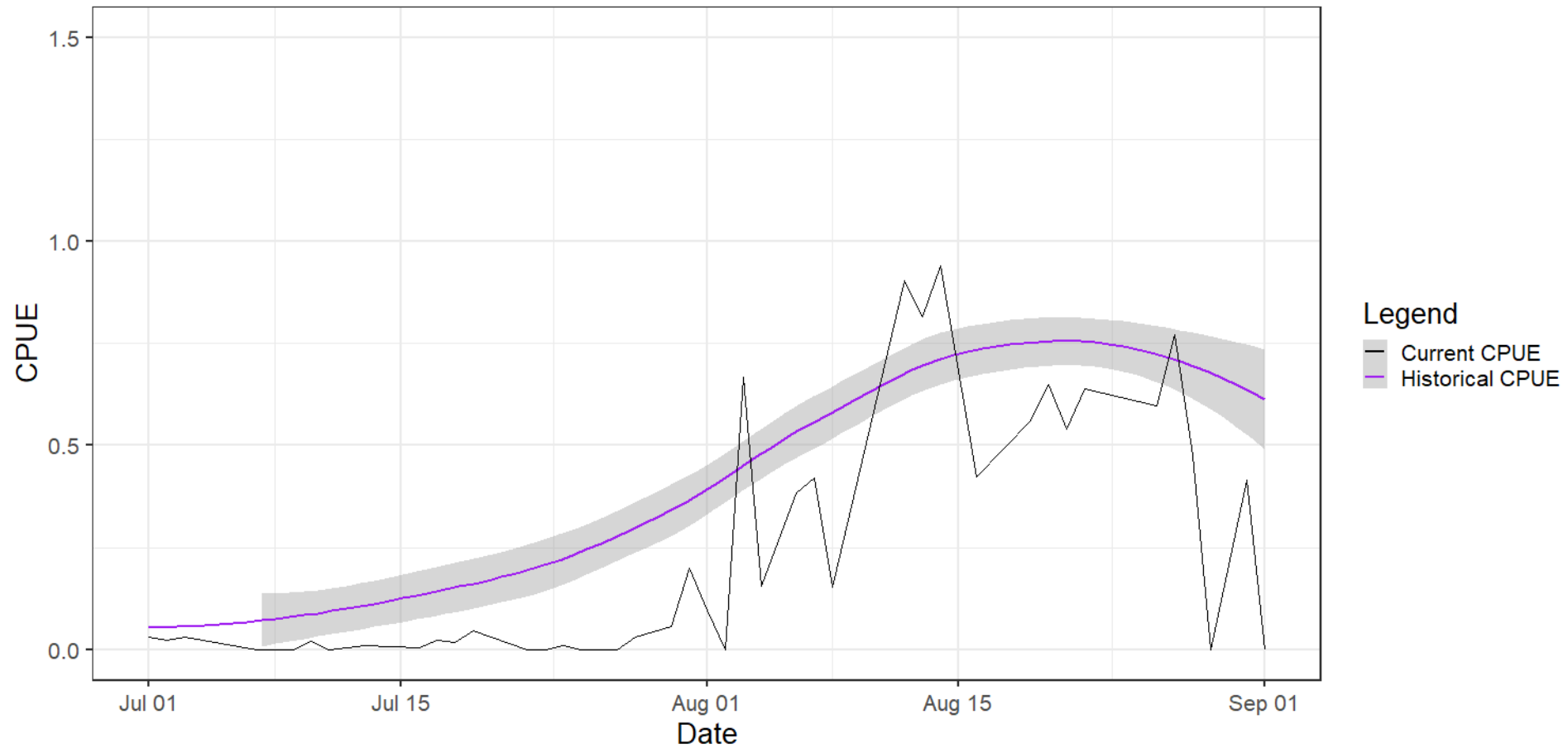
MA-6 Coho

Area 06 Coho CPUE Comparison



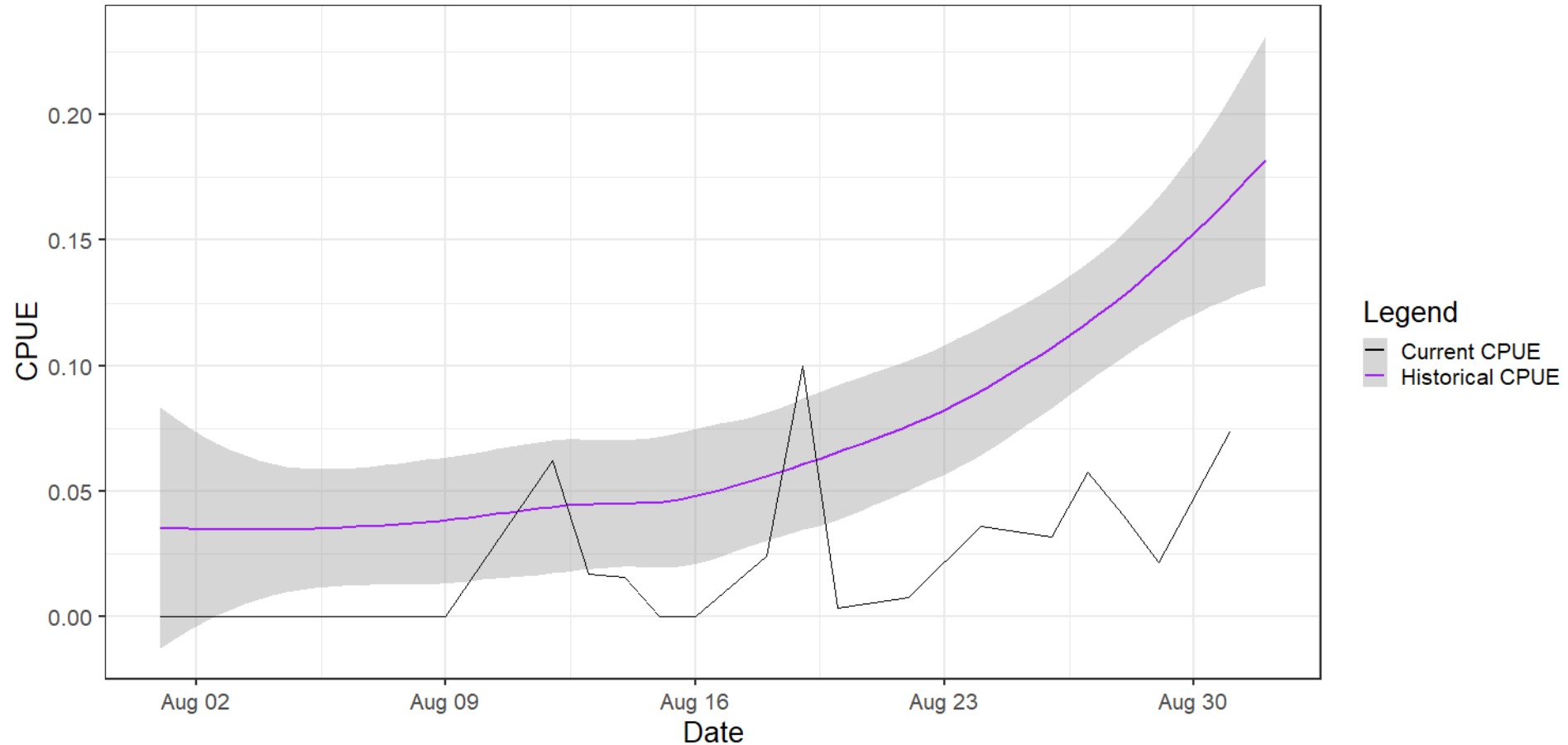
MA-6 Pink

Area 06 Pinks CPUE Comparison



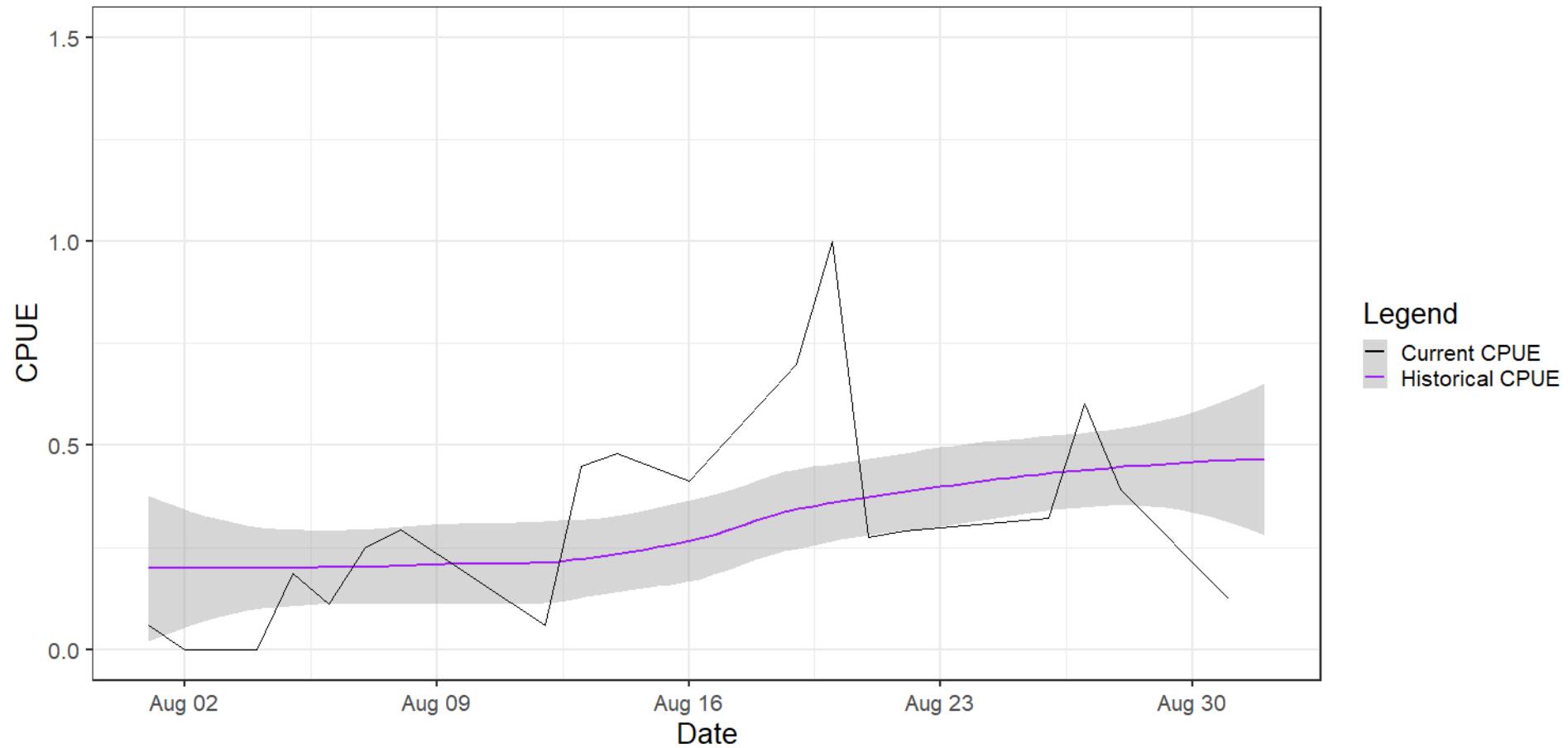
MA-8 Coho

Area 8-1 & 8-2 Coho CPUE Comparison



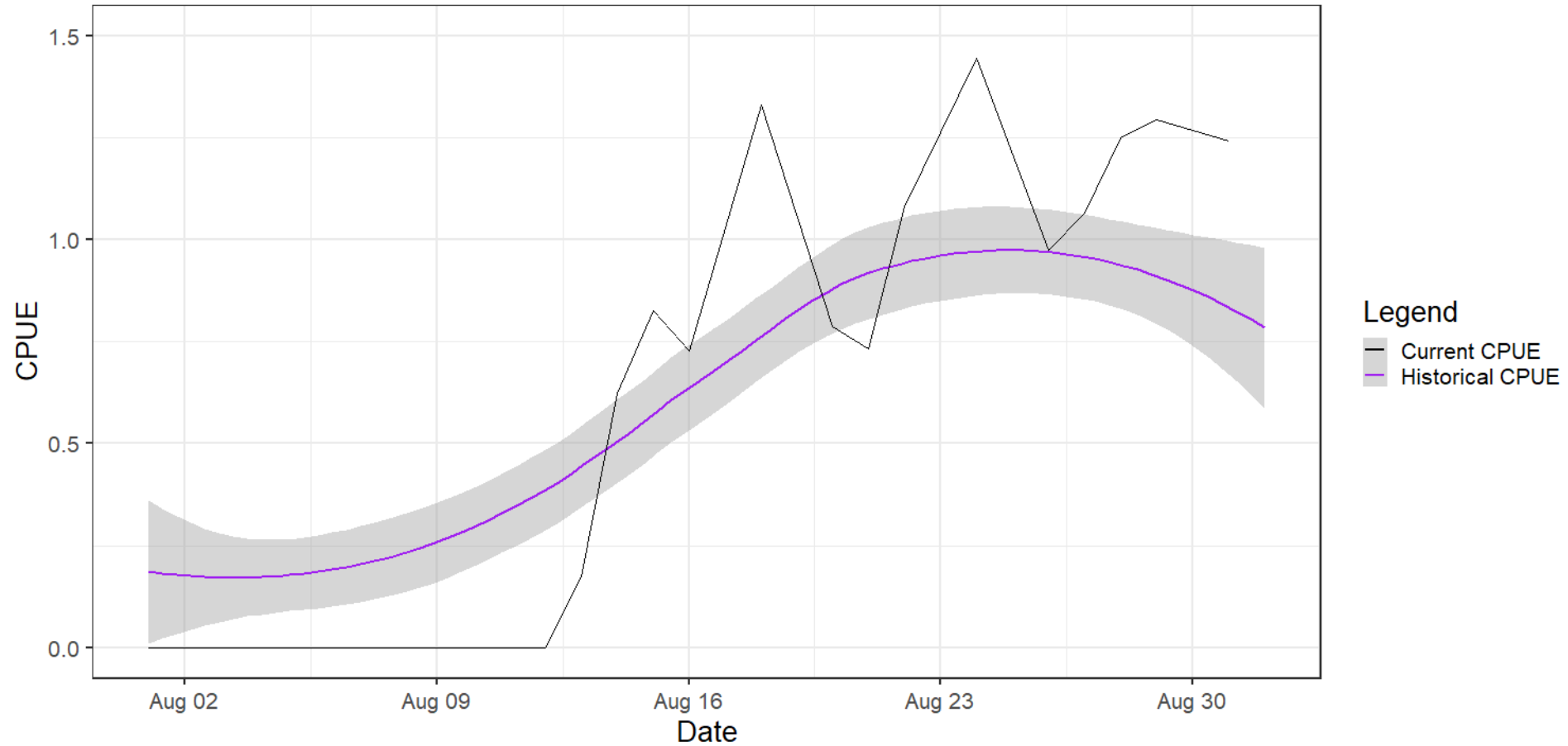
8-1 Pink

Area 81 Pinks CPUE Comparison



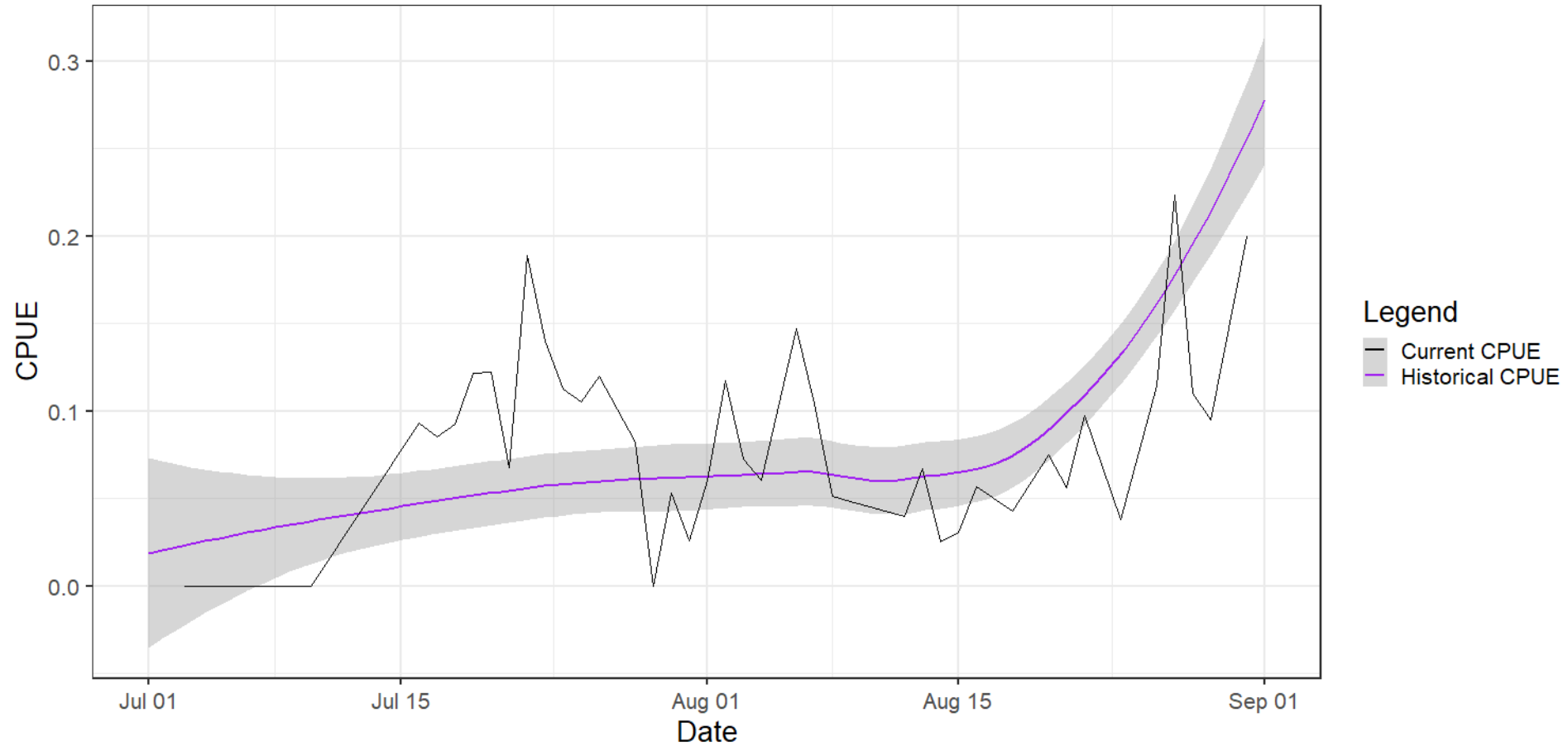
8-2 Pink

Area 82 Pinks CPUE Comparison



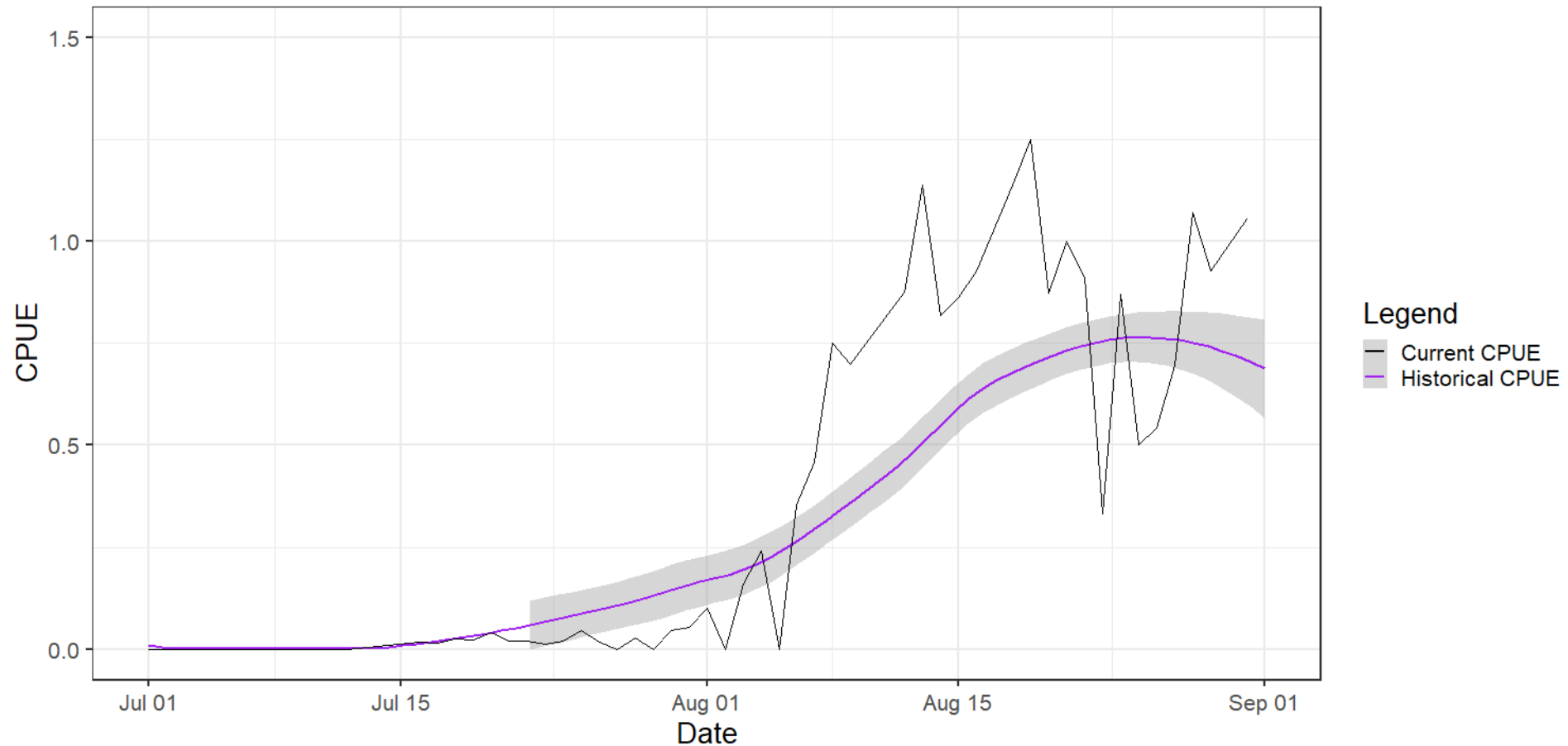
MA-9 Coho

Area 09 Coho CPUE Comparison



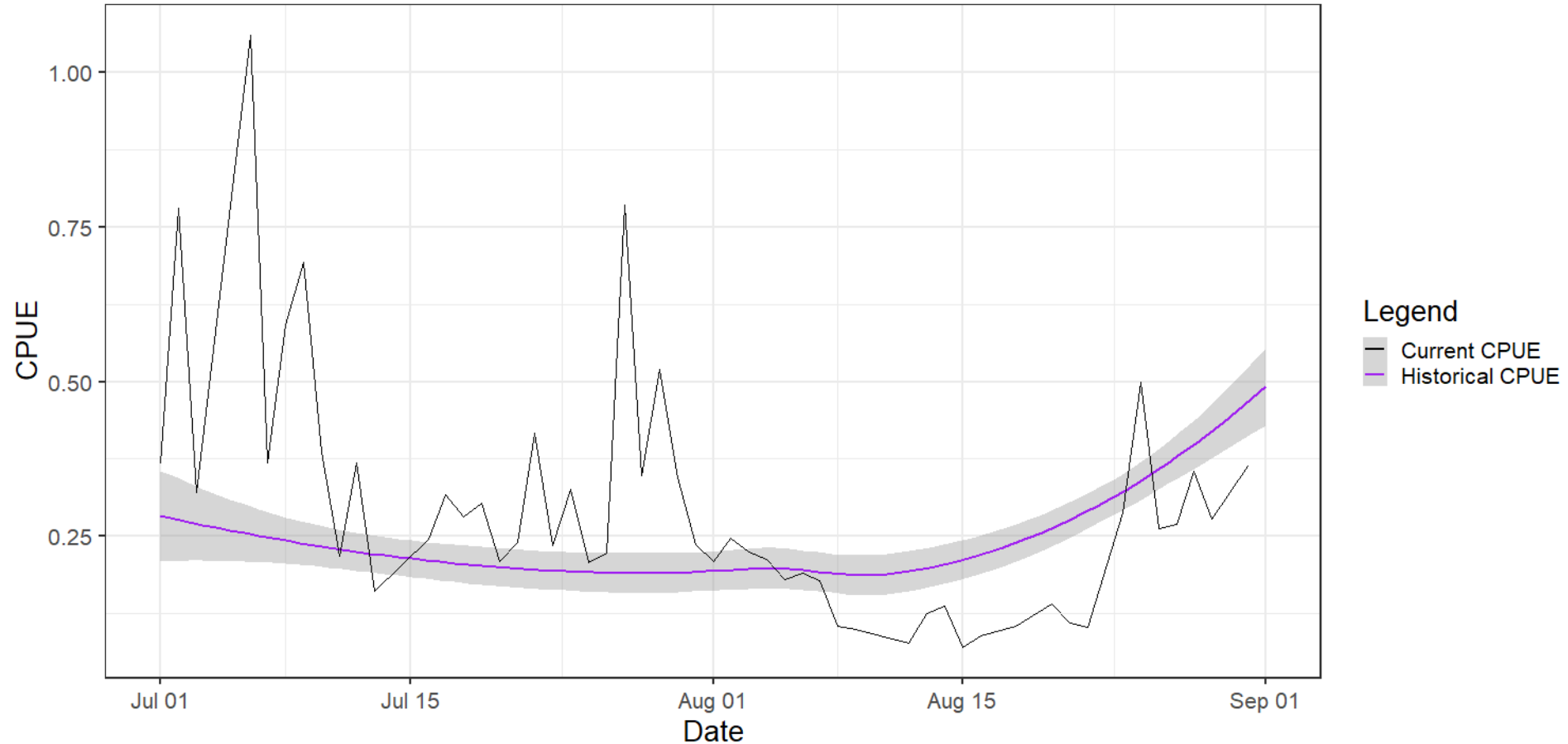
MA-9 Pink

Area 09 Pinks CPUE Comparison



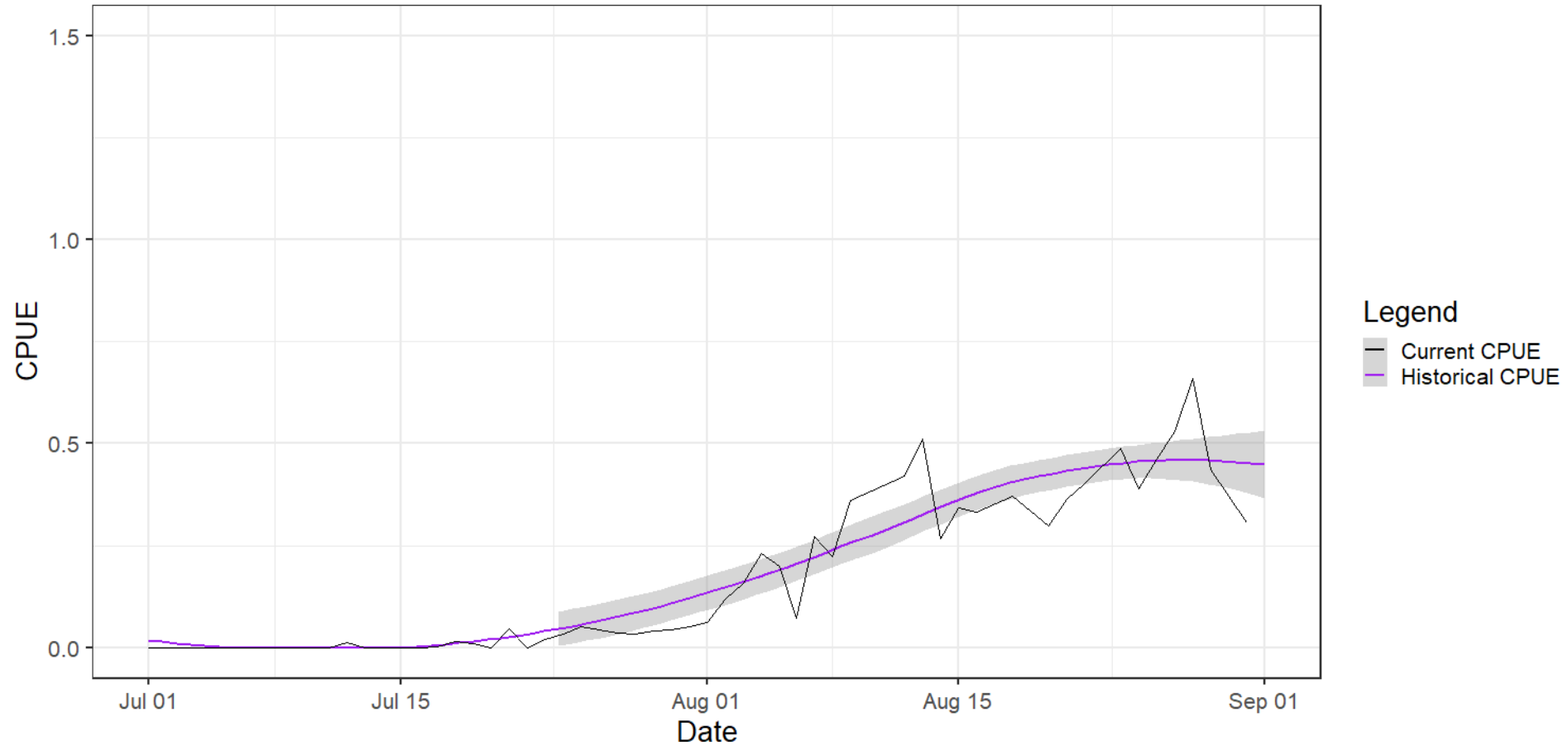
MA-10 Coho

Area 10 Coho CPUE Comparison



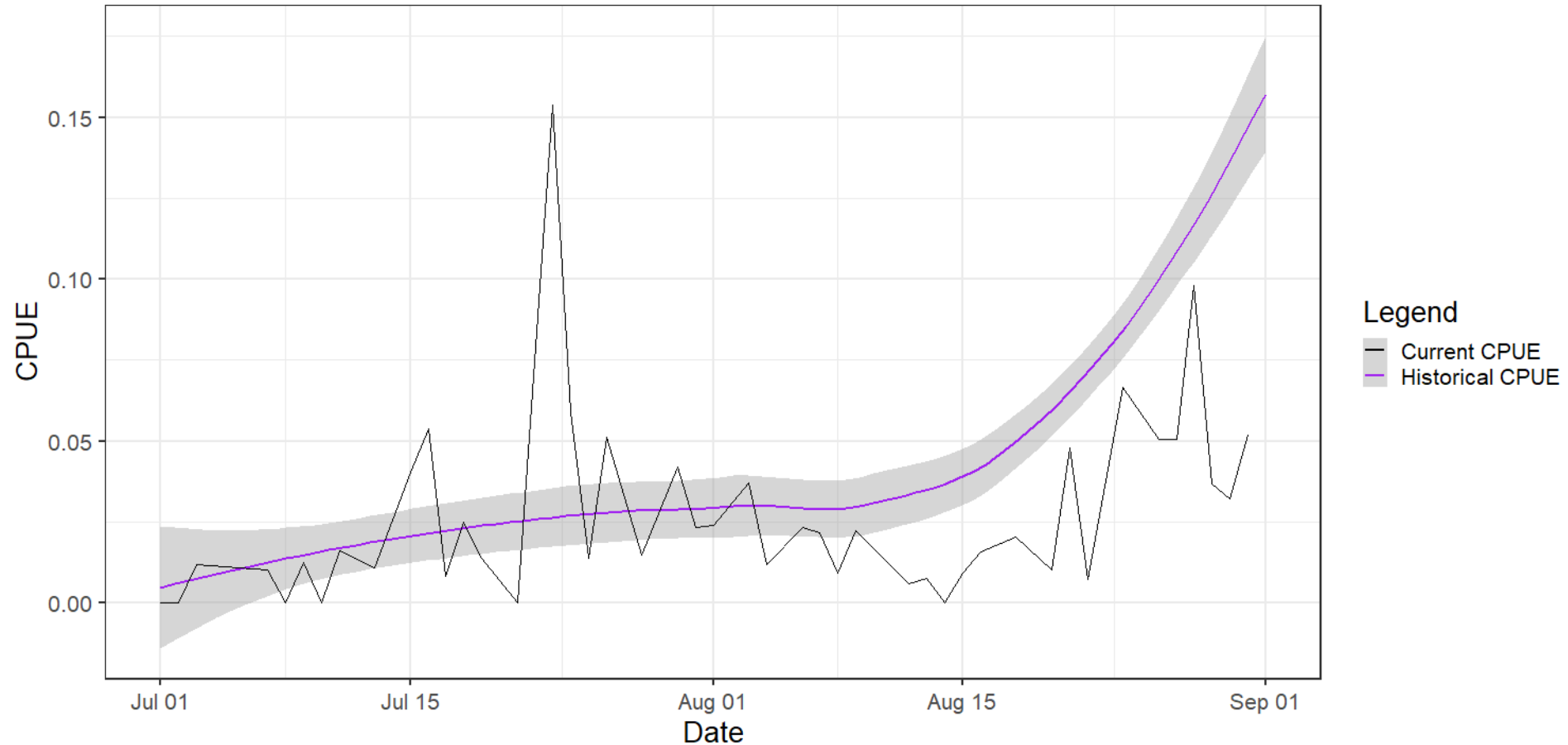
MA-10 Pink

Area 10 Pinks CPUE Comparison



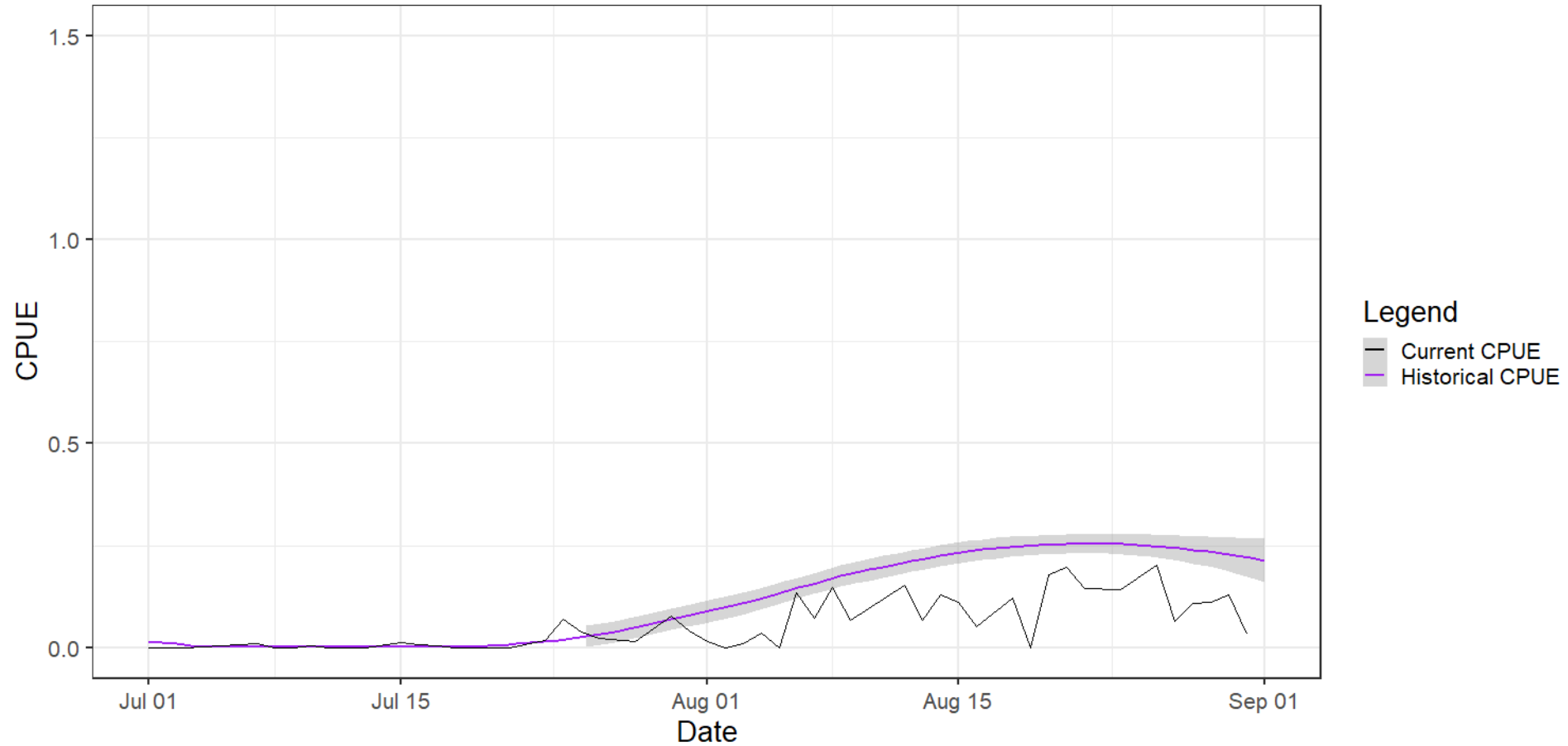
MA-11 Coho

Area 11 Coho CPUE Comparison



MA-11 Pink

Area 11 Pinks CPUE Comparison



MA-7

From 7/1/21 – 7/7/21

Marine Area	Retained / Legal Chinook		Sublegal Encounters		Unmarked Encounters	
	7	Harvest Estimate	2,550	Estimate	983	Estimate
Harvest Quota		1,382	Encounter Limit	1,899	Encounter Limit	2,466
Percent of Quota		185% *	Percent of Quota	52%*	Percent of Quota	52% *

- As we know – 185% of harvest quota



MA-7

Stillaguamish Impacts in the MA-7 Sport Fishery July-September, 2021

MARKED		
Preseason Model		Preseason Model with 2021 MA-7 Catch
MSF Landed	8.42	15.68
MSF Drop Off	0.48	0.90
MSF Sublegal	1.21	0.73
MSF Non-Retention	0.13	0.23
Total MSF	10.24	17.54
Non-Selective, Non-Retention	1.02	1.60
UNMARKED		
Preseason Model		Preseason Model with 2021 MA-7 Catch
MSF Landed	0.04	0.00
MSF Drop Off	0.22	0.09
MSF Sublegal	0.55	0.07
MSF Non-Retention	0.43	0.17
Total MSF	1.24	0.33
Non-Selective, Non-Retention	0.46	0.15

- We are above our pre-season modeled impacts on *marked* Stilly fish
- We are below our pre-season modeled impacts on *unmarked* Stilly fish
- We do not have enough impacts left on UM Stilly to compensate

MA-7

- Key points
 - Way over on harvest
 - Way over on marked Stilly fish
- Future Considerations
 - How do we use our impacts going forward



Questions/Comments?

