

Puget Sound Sport Fishing Advisory Group *Welcome Meeting*

January 19, 2022



WELCOME – THANKS FOR JOINING US!

ZOOM MEET/ CALL LOGISTICS / GROUND RULES

- You can turn your camera on and mute or unmute yourself through the control panel at the bottom of your screen.
- We will keep folks muted during the beginning of our program, then will unmute folks when we open it up for questions and feedback. Callers can unmute yourself by pressing *6 on your phone.
- We ask that you “raise their hand” to ask a question which you can access through the control panel at the bottom of the screen. You can also raise your hand by hovering over your face or name on the list of participants. Callers can raise their hand by dialing *9.
- Be respectful of others
 - Mute phone or line
 - Be tough on issues and questions, not on people or organizations
 - No personal attacks, insults or threats
 - Listen
 - Speak and act professional – *no offensive, disrespectful, or derogatory language, including profanity*
 - Allow for a balance of speaking time – *limit length and number of times to speak on each topic*
- If you have any technical issues during the call, use the chat button and we will help you through those.
Please do not use the chat for questions or comments on the presentation, we will take those live.



Agenda

- Orientation
 - Introduction of WDFW Staff
 - Introduction of New Members
 - Introduction of Existing Members
- Review of WDFW Advisory Group Handbook
 - Guidelines
 - Expectations
- Salmon Management 101
 - Recreational Fishing Management
 - Intro to North of Falcon (NOF)



WDFW Staff

- **Mark Baltzell** –Statewide Salmon and Steelhead Manager
- **Kirsten Simonsen** – Puget Sound Recreational Biologist
- **Chad Herring** – Anadromous Resource Policy Analyst
- **Kyle Adicks** – Intergovernmental Salmon Manager
- **Hailey Rosenthal** – Fisheries Implementation Biologist



Current PS Rec Advisory Group

Four new members

8 returning members





Guidelines and Expectations

ADVISORY GROUP HANDBOOK REVIEW

Welcome to PSSFAG!

You have been appointed as an advisory member for the next 2 years!

As a member you will provide insight, advice, and make recommendations through communication with WDFW staff.

By accepting membership, you assume certain responsibilities and expectations as outlined in next slides.



Expectations

- Strive to attend and participate in all meetings and review materials beforehand.
- Recognize that the group operates openly and transparently.
- Be respectful of the views and opinions of other advisors, citizens, and WDFW staff.
 - Understand that this advisory group represents a broad geographic range and a diverse set of interests unique to Washington State.
- Understand that the authority to advise the Department is granted to the advisory group as a whole; not to individual members.
- Recognize that individual members often will have to compromise to enable the advisory group to reach a recommendation.



Responsibilities

- Stay current with the regulations and issues in your focus areas, while also maintaining active participation in all fishing issues.
- Advise the department on regulations, policies and management plans and identify areas of concern, fishery trends and developments.
- Communicate the opinions and needs of relevant stakeholders to the department.



Responsibilities

- Be an effective communicator of the information and messages you receive as an advisor to other sport fishing enthusiasts and interested citizens
- Do not portray or speak on behalf of WDFW to the media or others without prior approval from coordinator and Public Affairs.
- Become familiar and participate in the North of Falcon salmon season setting process.



How will we support you?

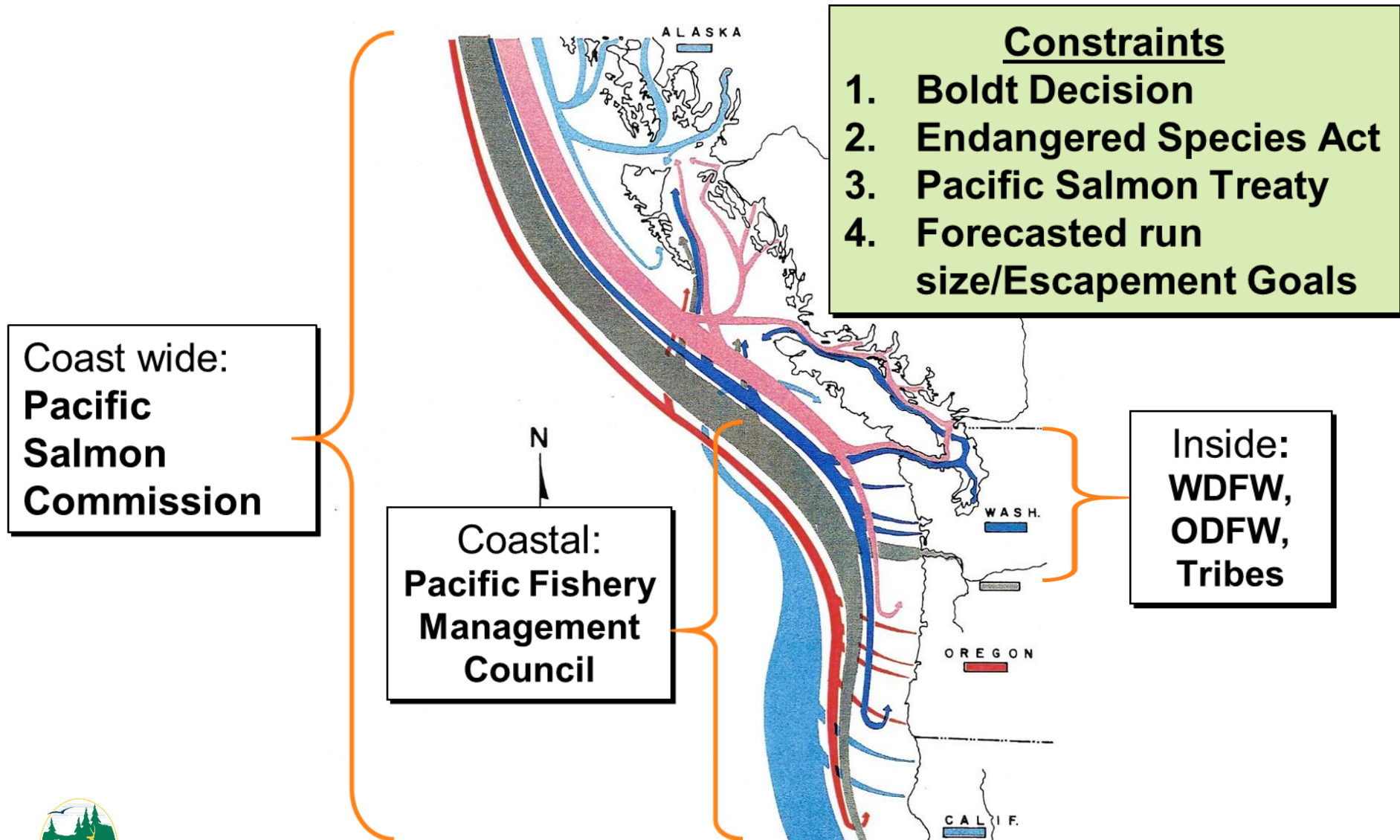
- Provide meeting support, scheduling, facilitation, agenda development and meeting summaries.
- Provide relevant background and other briefing materials.
- Provide timely opportunities for the group to advise the agency and provide timely communication on emerging issues
- Respect all views and perspectives represented by advisors
- Communicate advisor recommendations/ perspectives to agency leaders in time to influence decisions





SALMON MANAGEMENT OVERVIEW

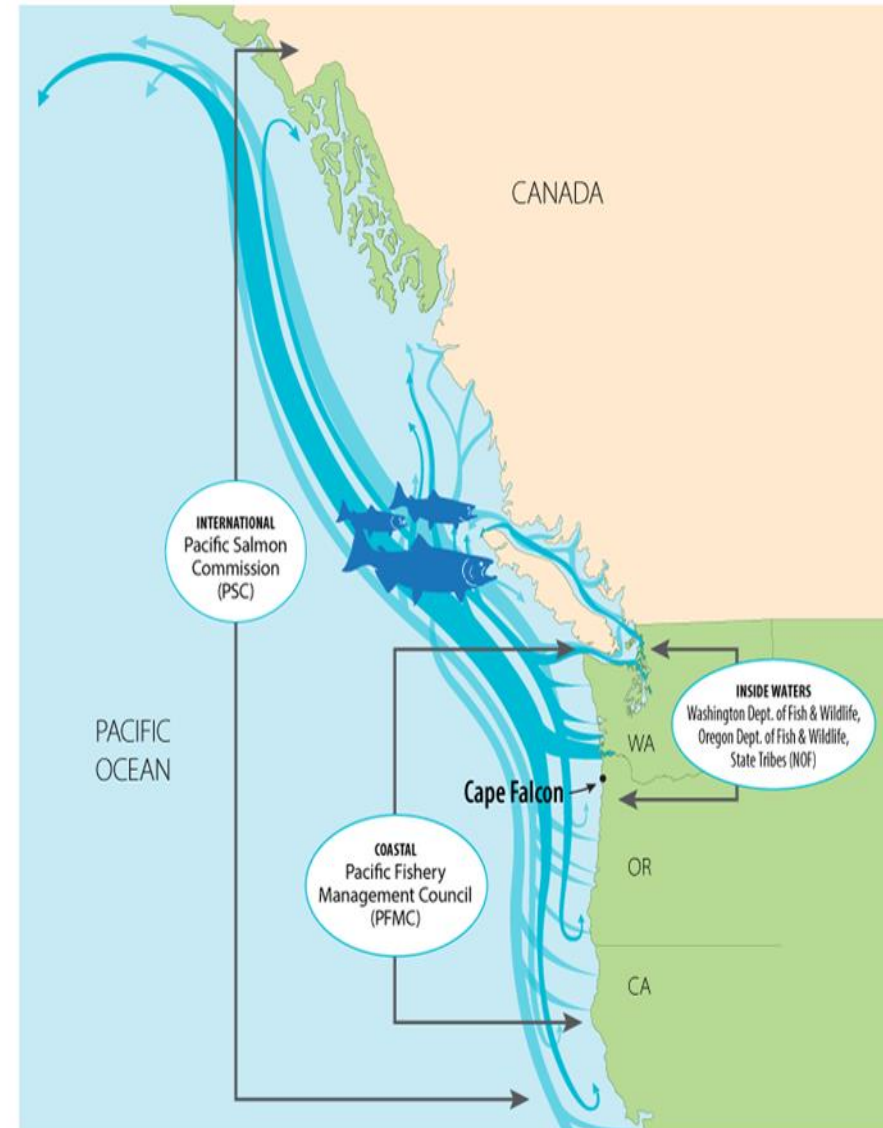
Management Framework



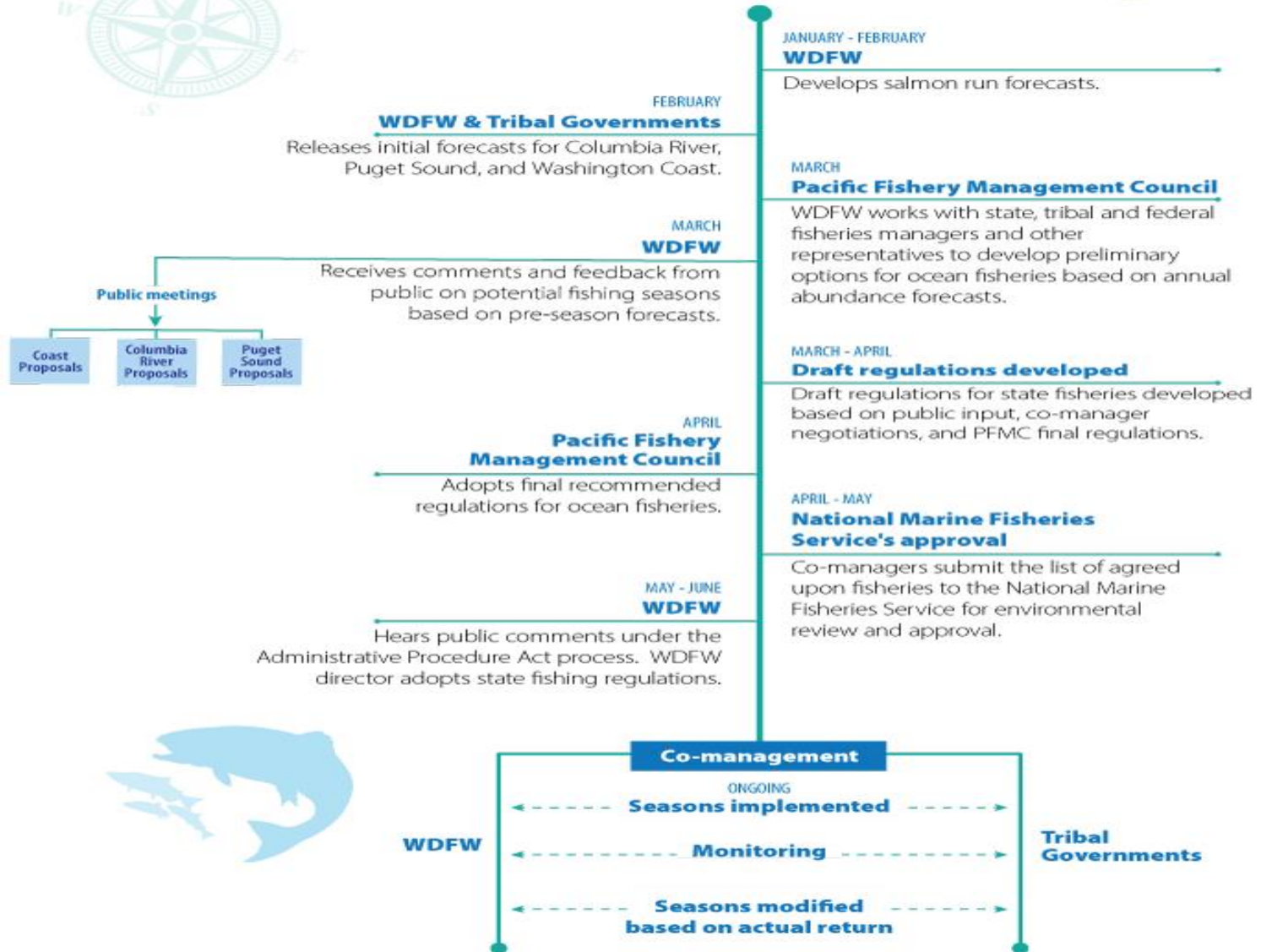
What guides North of Falcon?

Fishery managers must weigh many factors when developing salmon seasons, including:

- Endangered Species Act (ESA) constraints
- Commission policy
- Pacific Salmon Treaty obligations
- Tribal co-management: Washington's treaty tribes manage their own fisheries, sharing data and splitting harvest with the state
- Extensive monitoring and evaluation of fisheries statewide



North of Falcon Timeline



North of Falcon Process

1. FORECAST THE ABUNDANCE OF EACH STOCK.

2. DETERMINE IF THERE IS A HARVESTABLE SURPLUS.

3. PROPOSE FISHERIES.

4. MODEL FISHERIES TO DETERMINE WHICH STOCKS ARE OF CONSERVATION CONCERN, CONSTRAINING FISHERIES.

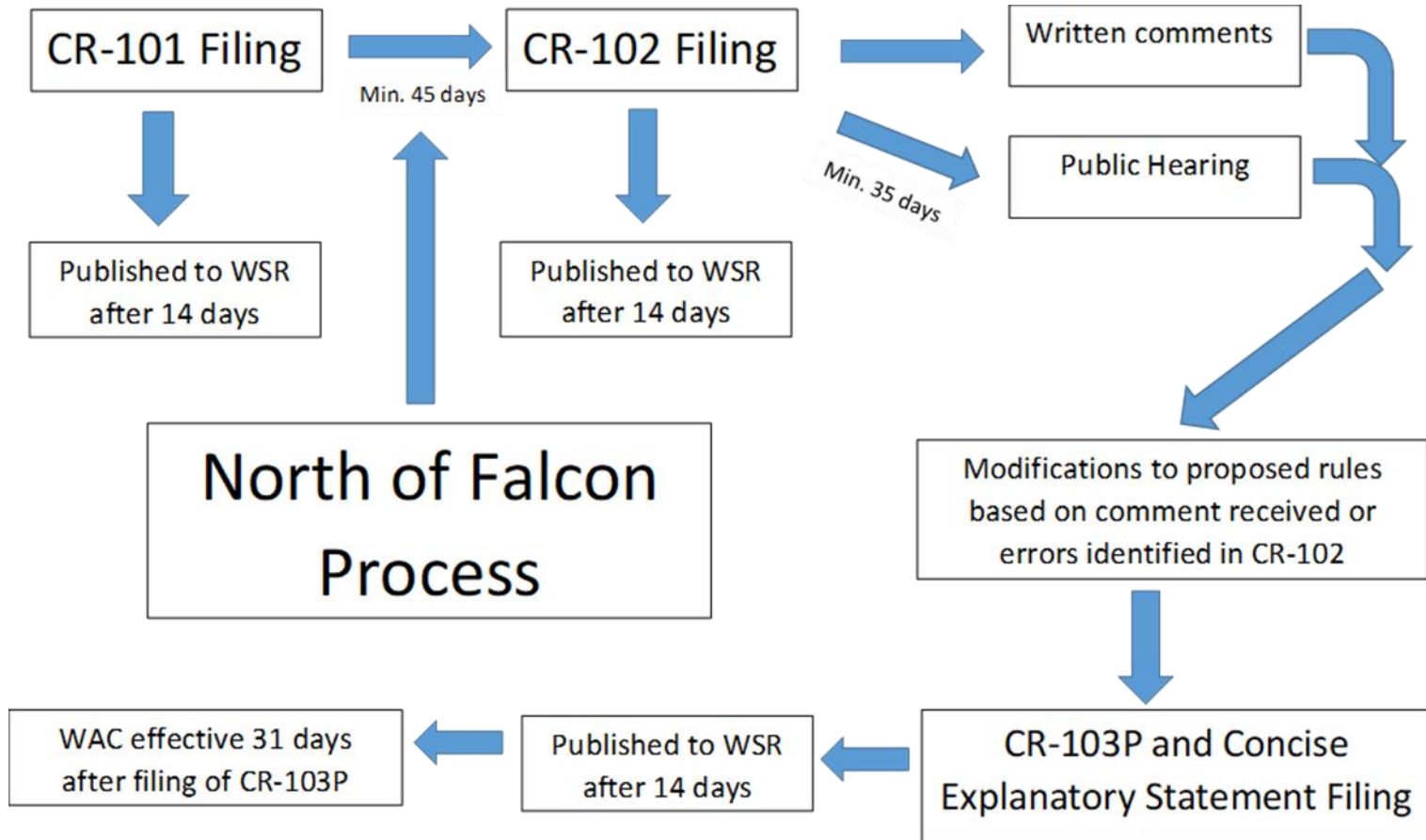
5. NEGOTIATE WITH TRIBES AND OTHER STATES FOR FAIR SHARING OF CATCH AND IMPACTS ON STOCKS THAT ARE CONSTRAINING.

6. FINAL AGREED-TO STATE AND TRIBAL SALMON FISHERIES (OCEAN, PUGET SOUND) ARE DESCRIBED IN THE "LIST OF AGREED FISHERIES" DOCUMENT.



2022 Salmon Fishery Rulemaking

Administrative Procedure Act Process



NOF Schedule (tentative)

Jan 18 – Emerging Issues Meeting

Jan 28 – Preliminary Forecasts

Feb 4 – Technical Forecast Agreement

Feb 14-18 – PSC Annual Meeting

Mar 4 – Forecast Meeting

Mar 16-18 – NOF #1

Mar 29-31 – NOF #2

<https://wdfw.wa.gov/fishing/management/north-falcon/public-meetings>





CURRENT HAPPENINGS

Current Season - PAUSED

MA-10 Winter Chinook

- Season planned for January 1 – March 30
- Saturday, Sunday, Monday only
- 1-fish limit for Chinook

- Currently on hold to preserve opportunity for February/March



MA-10 Winter Estimates

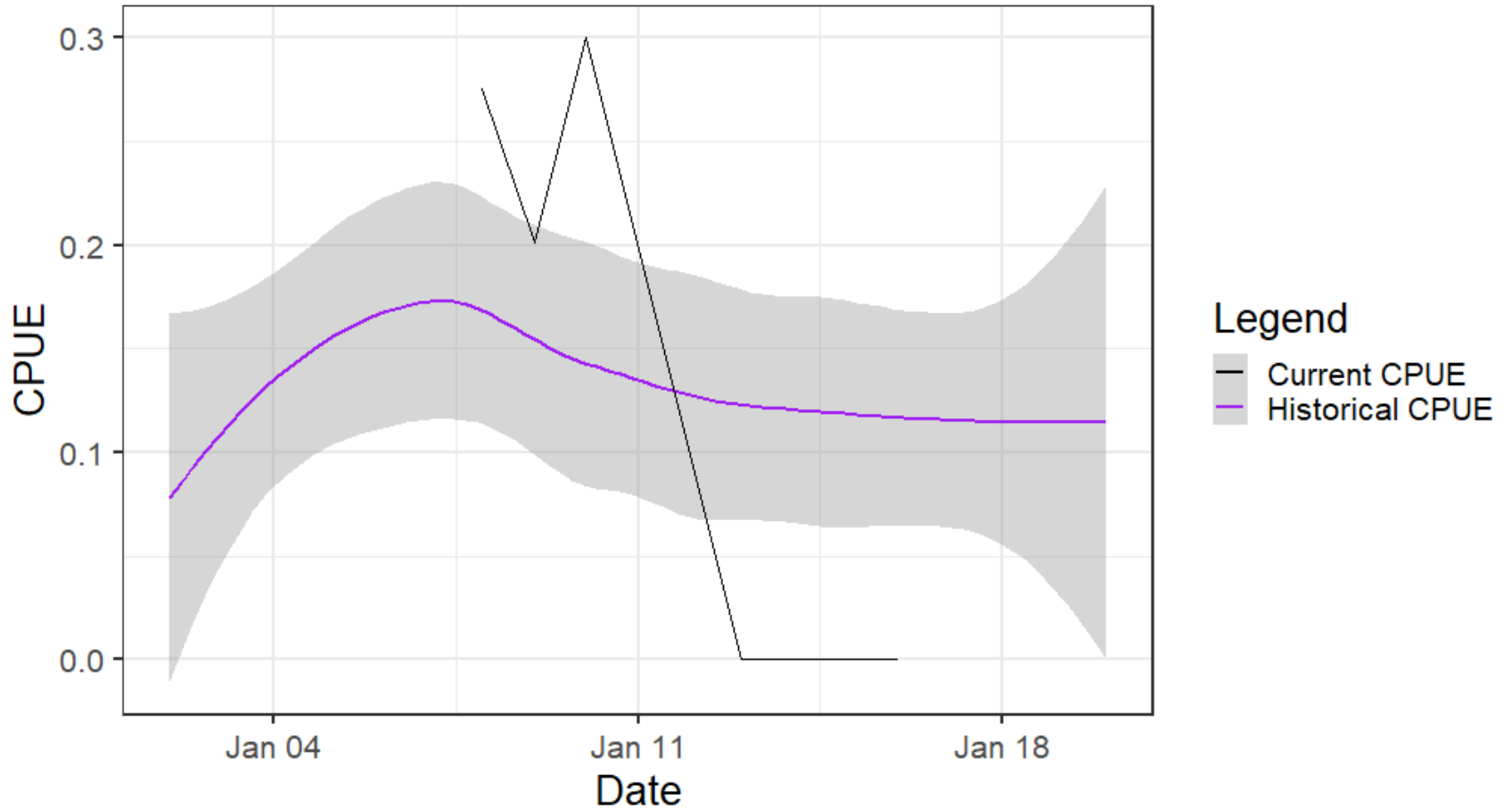
	Total Encounters	Sublegal Encounters	Unmarked Encounters
Estimate	2,054	1,797	514
FRAM	8,475	7,319	1,105
% of Total	24%	25%	46%

- Currently at 25% of Total and Sublegal Encounters and 46% of Unmarked Encounters



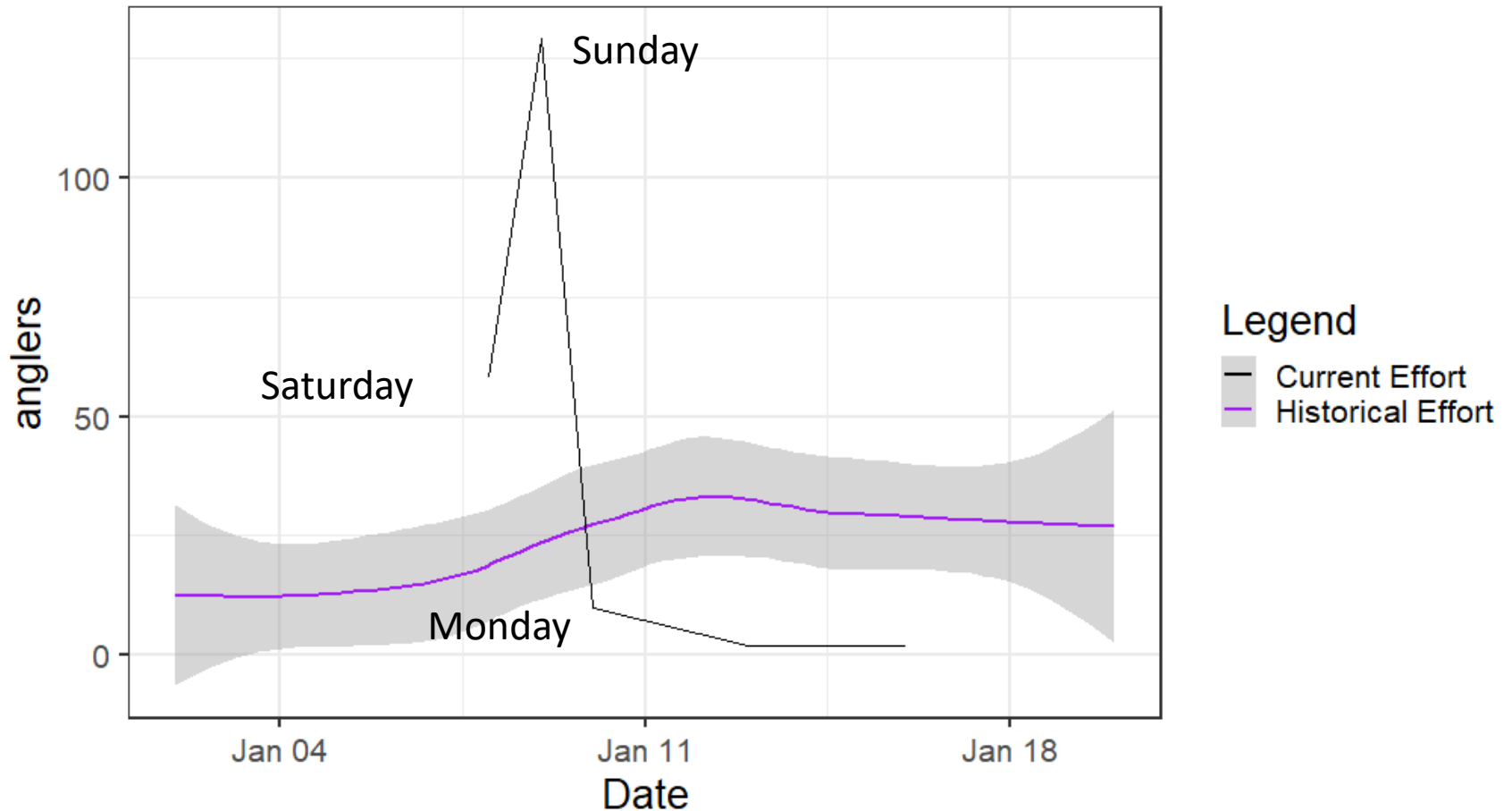
MA-10 CPUE

Area 10 CPUE Comparison



MA-10 Angler Effort

Area 10 Angler Effort Comparison



Looking Ahead

- MA-10 Reopening
- 2022 Priorities
 - Time on water
 - Opportunity for MA-7
 - Winter fishing opportunities
 - Coho opportunity in Snohomish Basin



Questions/Comments?

