

## WTS Advisory Committee – Straw Poll 2 Results

This document summarizes the responses to the WTS Advisory Committee’s second straw poll of draft recommendations. 16 of 18 remaining Committee members completed the straw poll. Responses were downloaded at noon on 12/12.

Based on the straw poll results, it appears there continues to be agreement on recommendations 2-15. (The one set of “I can’t live with it comments” here appears to refer to recommendation 1 and will be addressed there.) Based on the straw poll responses and the requested edits we believe that there will not be agreement on draft recommendation 1; we will instead capture the range of Committee Member perspectives on the issues contained there. We will provide revised draft text as soon as possible. We believe that the remaining recommendations -- 16, 17, and 18 – still have the potential for agreement on the main thrust of the recommendations, even as we know there also will be some sub-topics where there is not consensus. We are working through the comments on these recommendations and will provide revised draft text as soon as possible. Orange highlighting in the comment boxes indicates comments associated with a 4 or a 5 response.

### Part 1: Recommendations 2 through 15

#### Confirmation of support - Responses

Yes - I confirm I can support of live with these recommendations	14
No - I can't live with these; please use the section below to identify which recommendations you have concerns about and to describe your concerns	1

<p><b>Comments – Recommendations 2 through 15</b></p> <p>Section C: "Most respondents selected shooting or hunting as their primary activity at the Wenas, while hiking and nature walking were also popular." Can we please include the actual numbers, not just list "most", and include an attachment that summarizes the results. Recommendation 6: says "areas managed for concentrated shooting" needs to be changed to "areas enhanced for concentrated shooting". Recommendation 12, supporting language: At the end of the first paragraph, instead of saying "already devotes a significant", change to "already devotes 50-60% of available enforcement resources..." Since we have the actual percentage from Weaver, we should include it to be more specific and it's more objective.</p> <p>Item #2; at the end of the sentence: all should be allowed, etc. ADD the word "All" plus the following phrase; "all" should be allowed, "each accommodated as recommended by the Committee while recognizing and understanding the full scope and standard needs of each form of recreation". This changes are necessary realizing Region #3 is managed, staffed and operated primarily by educated, trained, experienced BIOLOGISTS creating an obvious bias, none of which prepares or qualifies Region #3 staff to manage Recreation or Law Enforcement. Item #4, same paragraph, ends with; and should remain so; however improvements etc. DELTE the words "dispersed shooting" from the phrase "improvement to management of dispersed shooting is needed. ADD the word "All" to the phrase; improvements to management of ALL forms of recreation is need. The existing terminology unnecessarily and unfairly condemn’s dispersed shooting as the ONLY form of recreation needing improved management. Nothing could be further from the truth. UNQUESTIONABLY ALL FORMS OF</p>
--

RECREATION ON THE WENAS (REQUIRE) NEED IMPROVEMENT TO MANAGEMENT, this for the reason stated in the edit for Rec. #2 above.
Still recommend that the WDFW's (easier to find and read) website address be put on the bottom of all the new signage.
It must me noted that Pittman-Robertson dollars were used in part to pay for to purchase and maintain these areas. Hunting and shooting should be the top priorities.

**Agreement on whether (or not) to prohibit certain types of firearms at locations enhanced for concentrated shooting - Responses**

I support limiting firearms at enhanced sites to only those best suited for discharge at those locations and the text captures my perspective adequately	6
I support limiting firearms at enhanced sites to only those best suited for discharge at those locations but the text does not capture my perspective	3
I do not support limiting firearms at enhanced sites to only those best suited for discharge at those locations, I think any firearm that can be used in compliance with applicable rules and requirements should be able to be used, and the text captures my perspective adequately	2
I do not support limiting firearms at enhanced sites to only those best suited for discharge at those locations, I think any firearm that can be used in compliance with applicable rules and requirements should be able to be used, but the text does not captures my perspective	5

<b>Comments – Prohibiting (or not) certain types of firearms at enhanced shooting locations</b>	
I don't think we should ban any fire arms from sheep company	
<p>On the south, each site recommended for enhancements has been chosen for specific reasons and considering; Pubic Safety, potential for wild Fire, damage to Habitat, Predictability, the sites natural features to accommodate a specific criteria of use, mitigate costs related to accommodation for recommended enhancements for use, accommodate current and future needs for the particular recreation. As such the Sheep Company site is determined to be best suited for rifle and handgun only. The site offers a natural vast open space which lay out and beyond the location intended for enhancements. The natural open space providing distance and surface land area adequate to provide for surface danger zones (SDZ) appropriate for use of firearms common to private ownership, as outlined in the USA DOE Shooting Range Criteria. SDZ are capable of containing projectiles discharged by all caliber of firearms anticipated to be discharged plus providing the added advantage of the rising terrain in the distance providing the additional capability of accommodating long range discharge of modern rifle calibers common to private ownership. Recognizing handguns are more commonly owned and operated together with rifle, handguns can safely be accommodated at the same site as rifle, this due to the form common to operation of each, as such allowing the handgun site to be separated a relatively short distance from the rifle area, whereas shotgun requires a much greater separation due to the form (elevated swing radius) common to operation of shotguns. It is much more common that persons operating rifles are likely to operate handguns in the same shooting session verses shotgun. Due to their very nature of use, shotgun disciplines are recognized as a recreational culture apart from rifle and handgun. The two, shotgun and rifle are not readily able to be mixed within the same immediate geographic are. All ranges commonly have shotgun separated from rifle or handgun. Shotgun simply cannot safely function in the same nearby area as rifle and handgun unless facilitated 180 degrees from each other which greatly increases the land area needed for safe operation, a primary reason for deleting shotgun at Sheep company. Handguns commonly require less yardage (distance, participant to target) for normal operation therefore are more easily positioned at a location having less distance to the open space the firearm is being fired into or to a</p>	

natural or manmade backstop. This criteria is the primary reason for the location/operation of handguns at Sheep Company (SC) as is indicated on the Google overhead previously provided to the committee. Rifle and to a lesser degree handgun, both require either many yards of distance and acres of open space, as is naturally provided at SC, for containment of the projectiles or provision of a natural or manmade backstop. Whereas SHOTGUN REQUIRES NO BACKSTOP only open space equal to the predictable distance of shot from a shotgun. Sheep Company has operated historically and continues to operate safely as an OPEN RANGE and should to continue operation as such due to its natural features supported in the USA DOE document; open space adequate to contain the projectiles being discharged, an unobstructed view into that open space and beyond to the natural back stop in the distance, land surface provides a slightly falling grade to the north northeast as best suited for rifle range operation. These natural features qualified the Sheep Company site as an OPEN RANGE as described in USA DOE Shooting Range Criteria already provided as reference to the committee. Green Dot Buffalo Road provides excellent surface area for Shotgun due to the unique operation (elevated swing radius) of shotguns verses operation of rifle and handgun (low, level and forward of the operator). Discharge of shotguns provides a near none existent risk of fire. This condition allowing retention of natural habitat in the shot fall area adequate to qualify as the SDZ. The natural open space provides predictability for all participants, observers and persons participating in alternative forms of recreation. The site provides for natural traffic flow and exit from the Green Dot road to near level land available for vehicle parking plus adequate space for standing for participation. Shotgun has no requirement for backstops, again benefiting habitat plus contributing significantly to lower the costs for needed enhancements to accommodate of the recreation. Green Dot Buffalo Road site provides an unobstructed view to and well beyond manufactures stated maximum range (SDZ) for shotguns providing predictability and maximum safety for alternative recreation outside predictable range for the firearms. The site provides a slightly rising grade in the surface of the lands which is preferred over a falling grade such as exits at Sheep Company, direction of fire is natural away from the Green Dot road, oriented to the north/northeast as best suited for shotgun. The site provides an unobstructed view for operator swing radius (Safe NO GO Zone) well beyond the known range for discharge of shotguns. Review Google Earth map previously provided as reference to the Committee.

An increased amount of education and enforcement will have to be applied in order to ensure compliance.

I believe it would be best to suggest firearms as best practice. If people can shoot a firearm in a safe manner in compliance was current laws they should be able. Many shooters go up to shoot multiple firearms and are not willing to drive to different locations. I could go up and want to shoot rifle, pistol, and shotgun all at the same time.

Dispersed shooting takes in any firearm. Our committee was set up to find a safe way for target shooting. Enhancing sites along with MORE education and signs would go a long way to suppress unsafe acts. This refers to any language referring to prohibiting firearms in recommendations.

In the final analysis, safety becomes the deciding factor. Complicating issues: After considerable practice, I can keep most or all shots from a large frame revolver (.45 Colt) in 6" to 7" at 100 yds. The vast majority of shooters cannot. Likewise, with a rifled choke tube in a shotgun, I can keep all or most shots within 4" at 100 yds. again without a rifled choke tube or rifled barrel, most shooters cannot. Those who cannot meet standards of keeping all shots in the backstop ought not to discharge firearms for which that level of performance is problematic. Yet prohibiting use of some firearm types denies those with sufficient skill and appropriate equipment from maintaining proficiency. On the other hand, there are some areas where I believe NO discharge of firearms for 'target practice' is safe or appropriate (a topic not addressed in this recommendation). All in all, I have to fall out at the choice I've made above, though perhaps some reasonable limits should be included in educational materials/expected behaviors handouts/web materials.

A question on the Buffalo road area. It will be enhanced for shotgun but if we aren't limiting the type of firearms that can be discharged a shooter can fire pistol and rifle there as long as the shooter is in compliance with regulations. Am I reading this correctly?
This sounds like the way most shooting clubs run their sites.
In NO WAY, SHAPE, OR FORM, has Sheep been discussed! This question is hard for me to answer. We have only discussed Buffalo, at which I believe dispersed shooting should be not allowed at the "current location". I'm not ok with adding Sheep into the mix. The only area that dispersed shooting needs to have limitations is at Buffalo road. Please remove Sheep from this, until further discussed with the advisory.
I support rules for enhanced target shooting sites which identify the type of firearm (handguns, rifles, shotguns) that is intended for each shooting location. The rules identifying type of firearm and shooting location must be posted by the Department at each enhanced shooting site.
I believe that limiting the types of firearms could lead up to the elimination of shooting altogether. This needs more discussion.

## Part 2: Recommendations 1, 16, 17, and 17

### Recommendation 1- Responses

1 - I strongly support this recommendation	2
2 - I support this recommendation in the context of the overall report	2
3 - I can live with this recommendation	3
4 - I am okay with this idea, but I need changes to the wording (please use comment section to describe changes below)	6
5 - I can't live with this recommendation (please use comment section below to describe your views and what you want to see)	2

<b>Comments – Recommendation 1</b>
"Dispersed shooting in compliance with applicable rules and regulations is currently allowed and should remain so throughout the Wildlife Area; however, improvements to the management of dispersed shooting are needed. WDFW should consider the following principals in their management of the Wenas Wildlife Area: 1) the purpose of the Wildlife Area is for recreation and for habitat/wildlife- both need to be supported by WDFW; 2) the WDFW should support and facilitate all types of recreational uses; 3) improvements to education and outreach are needed for all users so people can better understand the rules and expectations for behavior and know what to expect". Take out word "compatible". Statement on dispersed shooting needs to be clear, not listed last and not just as a "consideration" for WDFW. There may be a priority of user groups given funding for that area's management.
dispersed shooting needs to stop before someone gets hurt or worse
Statement #2; at the end of the sentence "all should be allowed", ADD; all should be allowed and accommodated as recommended by the Committee while recognizing and understanding the full scope and standard needs of each form of recreation. Statement #4; Delete; the unnecessary singling out of dispersed shooting as the bad guy. ADD; and should remain so, however improvements to management of ALL forms of recreation are needed. Throughout the text All forms of recreation is what is being discussed. Singling out dispersed shooting at the end is unnecessarily discriminatory. The intent of the Committee is to create a level playing field for All forms of recreation not continue to perpetuate an adversarial relationship between them.

<p>It is important to realize that most of this land was purchased with Pittman &amp; Robertson money (the excise tax from the sale of firearms, ammunition &amp; archery tackle-hunters &amp; target shooters). Other user groups have not contributed anything. It is illegal for individuals to build trails on state lands, yet it appears that there are many. Agencies would have to do a cultural resources study &amp; SEPA before they could construct trails.</p>
<p>I don't agree with this sentence: WDFW should apply the following principles to future decisions about dispersed shooting. Our committee is suppose to find safer uses for ALL recreation users. Sentence should state: WDFW should apply the following principles to future decisions about recreational uses on Wenas Wildlife Area.</p>
<p>I believe the statutory mandate to maintain and improve wildlife populations and habitat (not exact wording) should receive more emphasis, and that other uses/recreational activities should be secondary. That said, I can live with this wording as an improvement over prior language, especially that wildlife/habitat is listed first.</p>
<p>(2) there should be opportunities for all types of recreational uses that are compatible with the WDFW's primary mission- one use should not be prioritized over others, all should be allowed; I just want to emphasize that its not a given right to just do anything out there; activities must be in concordance with the primary use of the land, or take it elsewhere...thus a caveat to the "all should be allowed"</p>
<p>We say "one use should not be prioritized over others," but Mike Livingston says according to RCW 77.04.012 and WAC 220-500-010 that hunting and fishing are the RCW mandated recreation priorities for the department. It sounds like all other recreations come secondary to these and should be treated equally with each other. Something like "while hunting and fishing are the RCW mandated recreations for WDFW all other forms while secondary to these should be treated equally and one use should not be prioritized over others."</p>
<p>The purpose of the Wildlife Area is for habitat/wildlife conservation and compatible recreation. Conservation includes management of human use for public benefit and sustainable social and economic needs. Target shooting is compatible with other conservation goals when in compliance with current law and WDFW rules for use of the Wildlife Area. The Department has a responsibility to provide direction and support for recreational activities on the Wildlife Area including dispersed and more concentrated target shooting. Improvements to education and outreach are needed for all users so people better understand the rules and expectations for behavior. Applying the recommendations included in this report will improve the recreational objectives of the many people who visit the Wenas Wildlife Area.</p>
<p>This areas was paid for by hunters' and shooters' dollars, Pittman-Roberson dollars, the primary focus of this area has to be towards hunters and shooters. This languages sounds like shooters are red-headed step-children and we are begrudgingly being allowed to participate. Hunters and shooters need to be first in line.</p>

**Supportive Text for Recommendation 1 – Responses**

1 - I strongly support this text	1
2 - I support this text in the context of the overall report	7
3 - I can live with this text	3
4 - I am okay with this text, but I need changes to the wording	4
5 - I can't live with this text	1

Comments – Recommendation 1 Supportive Text

It will depend on the final recommendation wording.
The last sentence in the above statement; some additional limits "are" needed, etc. DELETE; THE WORD "ARE" ADD; the word "may" be needed etc.. As written the use of the word "are" implies an imperative which exists only as an opinion in the mind of a minority of the Committee. Use of the word is inappropriate. It suggests a decision has been made by the Committee or by WDFW neither of which is true. No decision should or can be made until the necessity for limits has been proven. A hypothetical is not evidence of reality. Determining the necessity for additional limits should be identified only following implementation of the Committee' recommendations, i.e., public education, improved signage and mapping, followed by evaluation of the effectiveness of each, over a reasonable period of time such as 2 years.
Don't like any statements referencing the closure of shooting anywhere on Wenas Wildlife Area.
I selected 2.) because of the opinion expressed in the comment above. <i>(Note this refers to the commenters earlier comment; not to the comment above this block.)</i>
The last paragraph concerns a small area in one location. (Buffalo Road area) I think it is appropriately addressed in Recommendation 17. I suggest that the last paragraph be deleted from supportive text for Recommendation One because it is a possible exception from Recommendation One and it remains undecided if it will apply to any location.
Dispersed shooting needs to limited to protect homeowners.

#### Recommendation 16- Responses

1 - I strongly support this recommendation	8
2 - I support this recommendation in the context of the overall report	5
3 - I can live with this recommendation	2
4 - I am okay with this idea, but I need changes to the wording	0
5 - I can't live with this recommendation	0

Comments – Recommendation 16
As noted in comments I sent to you earlier, I hold a minority opinion that improvements to East Umptanum should also be included in this priority list for safety reasons & habitat disruption reasons.
change wording of the last sentence to read ; Enhancements should be focused and designed .....

#### Sanitation Sites – Responses

I think there should be sanitation stations at sites enhanced for concentrated shooting and the text adequately captures my views	6
I think there should be sanitation stations at sites enhanced for concentrated shooting but the text does not capture my views	0
I do not think there should be sanitation stations at sites enhanced for concentrated shooting and the text adequately captures my views	7
I do not think there should be sanitation stations at sites enhanced for concentrated shooting but the text does not capture my views	2*

\*Respondents did not submit comments, so we are not able to propose revisions to address their concerns. Will follow up at the December meeting.

#### Supportive Text for Recommendation 16 – Responses

1 - I strongly support this text	3
2 - I support this text in the context of the overall report	6
3 - I can live with this text	4
4 - I am okay with this text, but I need changes to the wording	1
5 - I can't live with this text	1

<b>Comments – Recommendation 16 Supportive Text</b>	
Dot #3 Talks about using existing material for backstops Add; use of exiting material where and when practical. Dot #7; Discussed providing durable benches etc. Add either; "Where allowed" or "If approved", or "when practical", or "When funding allows", install durable benches etc. Personally I am open to these enhancements however due to the costs to provide them "sgs" has made no recommendation for them.	
I believe the focus should be on signage direction of fire, fire breaks, and berms for safety. With direction in mind I believe you can find safe ways to shoot all four of these areas. Things like bullet traps, parking, and restrooms are all great things but they are not the most important. we should first focus on safety which is direction of fire and fire breaks Signs and education. If you start moving access roads and locations the cost and the planning becomes huge	
Due to the recommendation on Sheep Company concentrated shooting site for only rifle and pistol I can't agree. Should be enhanced for shotguns too. To much disagreement on what, where and when Buffalo road ever reaches agreement.	
Again I personally hold the minority opinion that East Umptanum should be included in the list of sites where these improvements are appropriate.	

**Recommendation 17- Responses**

1 - I strongly support this recommendation	3
2 - I support this recommendation in the context of the overall report	8
3 - I can live with this recommendation	3
4 - I am okay with this idea, but I need changes to the wording (please use comment section to describe changes below)	1
5 - I can't live with this recommendation (please use comment section below to describe your views and what you want to see)	0

<b>Comments – Recommendation 17</b>	
I'm okay with the idea that this site is a good one for shotguns but the reality of WDFW improving Buffalo road for that distance won't happen. They have no road improvement money in their budget. So the problem here is what happens to shotgun use while a decision on Buffalo road goes on and on.	
I feel less qualified to comment on S. Wenas Area sites, but believe this is the best recommendation for the Buffalo Road.	
change last sentence to read ; ... and Durr Rd., enhancements should be focused and designed.....	

**Closure of Area Near Buffalo Road to Dispersed Shooting – Responses**

I believe there should be a small area closed to dispersed shooting at Buffalo Rd and the text adequately captures my views.	3
I believe there should be a small area closed to dispersed shooting at Buffalo Rd but the text does not adequately capture my views	1

I believe dispersed shooting in compliance with applicable rules and regulations should continue to be allowed at Buffalo Rd and the text adequately captures my views.	8
I believe dispersed shooting in compliance with applicable rules and regulations should continue to be allowed at Buffalo Rd but the text does not adequately captures my views	3

**Andy – where are the comments here?**

**Supportive Text for Recommendation 17 – Responses**

1 - I strongly support this text	1
2 - I support this text in the context of the overall report	5
3 - I can live with this text	7
4 - I am okay with this text, but I need changes to the wording (please use comment section to describe changes below)	0
5 - I can't live with this text (please use comment section below to describe your views and what you want to see)	2

Comments – Recommendation 17 Supportive Text	
I'm against saying any area is closed to disperse shooting. If there's an area on Buffalo Road there is no way that someone can be shooting there and be in compliance with the rules of shooting safe with the backstop then I am not opposed to putting up signs that say if you're shooting in this area that you may be acting illegally But before I was to close an area completely to disperse shooting I would need to be convinced that you just can't shoot in that area at all with anything and be safe	
Only problem I have is again while the committee tries to come to agreement on Buffalo Road where do shotguns go? WDFW does not have road improvement money in any of their budgets. Improving Buffalo Road likely will not happen just like WDFW's Cindi Confer closing Hardy Canyon road a few years back.	
I heard more concern for safety than a move to prohibit, and some (I believe accurate) observations that dispersed shooting in compliance with DNR regulations (recommended for WDFW) was not possible there.	
I guess I'm at a loss on this issue. WAC 332-52-145 states: "Persons shall not shoot within, from, along, across, or down roads or trails."...what part of this would allow the current shooting at the intersection of the buffalo road GD and powerline roads????? If we adapt the DNR regs to the DFW land, by administrative code we must stop shooting at that intersection. If we don't adopt the DNR regs, then I am 100% for having a closed zone at that intersection. "slippery slope" is another issue...if it deserves to be closed due to safety and habitat issues that can't be fixed thru changed WAC's and E/E, then it deserves to be closed...this is not a communist expansion, or suppression of 2nd amendment rights issue. Later in the text there is this note: "They note that in their view, horses, hiking, and motor and mountain bike riding adversely affect habitat as much, if not more than, dispersed shooting." This task force was formed to address safety and habitat issues, specifically wildfires that have decimated areas of the Wenas...I know that there are a bunch of folks who, like some others in D.C., are convinced that if you say a lie often enough, people will come to accept it, but even if they can't agree on how many of the fires on the Wenas were started by target shooting, I've never heard a single voice express the view that these fires and subsequent loss of habitat, were caused by "horses, hiking, and motor and mountain bikes".	
change the following statement wherever it occur " limited enhancements" to instead read " focused enhancements"	



The supportive text for Recommendation 17 can be better stated: I would recommend that it be limited to the issues considered such as location, orientation of enhanced shotgun area, and potential conflict with other users. The Buffalo Road area has a suitable location for an enhanced site for shotgun use. The location identified has suitable separation from homes and other user groups. The group also identified that dispersed target shooting that historically occurred in the Buffalo Road area has been impacted by increasing use of other forms of recreation. An agreement concerning restrictions on dispersed target shooting was not reached. One recommendation to reduce conflicts is to improve access to the Skyline Trail which was developed for use by hikers and horseback riders. This could occur by development of facilities near the trailhead which would provide greatly improved parking and access. This and other recommendations should be considered during Phase 2 of this project.

**Recommendation 18- Responses**

1 - I strongly support this recommendation	3
2 - I support this recommendation in the context of the overall report	6
3 - I can live with this recommendation	6
4 - I am okay with this idea, but I need changes to the wording (please use comment section to describe changes below)	0
5 - I can't live with this recommendation (please use comment section below to describe your views and what you want to see)	0

<b>Comments – Recommendation 18</b>	
I defer to the recommendations of small group north.	
I think east umtanum can be used as a shooting area if enhancements were properly done with direction of shooting in mind. I've offered to go out there with people and show them the direction we were planning on shooting. I personally think enhancements will make it safe for that it is right now Without enhancements and providing direction people continue to shoot out there the direction they have been shooting because it's still not going to be legal to shoot there.	
Only because I do not know the area so am relying on committee members who do know the area.	
...and the minority opinion I expressed earlier (late last week?) that somewhat more improvements at this location is preferable and more conducive to safe shooting.	
change " limited enhancements" to "focused enhancements"	

**Supportive Text for Recommendation 18 – Responses**

1 - I strongly support this text	1
2 - I support this text in the context of the overall report	6
3 - I can live with this text	7
4 - I am okay with this text, but I need changes to the wording (please use comment section to describe changes below)	1
5 - I can't live with this text (please use comment section below to describe your views and what you want to see)	0

<b>Comments – Recommendation 18 Supportive Text</b>	
"As with Buffalo Rd., the Committee believes that a number of the areas historically (and currently) used by dispersed shooters at East Umtanum are in fact not in compliance with requirements for	

shooting on public lands because..." Add the word "May" not be in compliance- I can't confirm or vouch for them not being in compliance without visiting each location for verify it.
However I defer to the wisdom and recommendation of the "small group north". Information has come to light which may affect the finale outcome of recommendations for EM. This pertaining to concerns for safety brought forward by a certain user group during the November meeting, this pertaining to they have or intend to establish trails which would be in conflict with historically established user identified firearm use at East Umtanum. These trails possibly being in conflict with established WDNR rules.
Depending on the direction of fire, there is an unobstructed view to the base of the hill out to 500+ yards to the north.
Again relying on committee members who know the area.
The observations collected by Bill noting that the trails cited by the mountain bikers were illegal are relevant. See also comments previously submitted by me in that regard. Similarly, it appears that there is a level of frustration with one group trying to exclude other users at this location. I continue to believe that safety would be enhanced, and habitat disruption minimized, if an off-road parking area is established (to prevent driving off the road to shoot) and more definition of firing lines, safe shooting lane directions and backstops are developed here.
I don't think the second paragraph of the supportive text is directly related to the development of the proposed enhanced shooting site at East Umptanum. The Department of Fish and Wildlife was unable to provide records of these violations by dispersed target shooters. The Committee has not established the location of these areas and has not verified actual violations. There are separate recommendations for education, outreach, and enforcement in this report.

### Part 3: Additional Comments to Accompany the Final Report

Open-Ended Response
In no particular order; General Edits, Observations and opinion. Observation; Page 3.C. of the Report; Described is the survey information taken by WDFW. It refers to 602 participants. Worth noting is the total absence of mention for use at Buffalo Road. Makes one wonder if the issue of dispersed shooting is an issue of a mole hill being made to look like a mountain. Opinion; Page 4 Item D. Safety Concerns Complaints. WDFW acknowledges the law enforcement division has no tracking method for identifying the very concerns WDFW states as issues of such importance action must be taken. In documents I have from public information requests, WDFW has been interested in closing so called dispersed shooting since 2001 when Cindi Confer Morris was hired, yet in 16 years WDFW has never invested in a system of developing evidence to support the action. Opinion; Page 6 Item F. Fire It is stated WDFW has no conclusive evidence establishing causes of fires on the Wenas. They don't because as has been confirmed WDNR investigates all fires on DNR land. However DNR makes no investigation on other lands unless requested. WDFW makes no request because DNR will bill them for the cost of the investigation. If an agency has no interest in identifying the cause of fires how can the public expected the agency to enact proactive measures to prevent future fire? EDITS other than requested; Edit Page 11 item C. of the draft. Known areas of, etc. Dot #1. Add; The "user defined trail known as" the Cutoff Trail, etc. Recommendation #4; signage at the Wenas Wildlife Area at (ADD ALL) access points and at points enhanced for concentrated shooting (ADD and at ALL trail heads) Recommendation #5; Third sentence; clear materials addressing regulations, (ADD Rules for Public Conduct) and best practices for (DELETE the word "SHOOTING") (ADD "ALL forms of recreation") on public lands. Recommendation #6, first sentence; Roads and trails, areas (DELETE the word "MANAGED") (ADD the word "ENHANCED") for concentrated shooting. Note;

No site enhanced for concentrated shooting will be managed in the true sense of the word. No one will be consistently on site telling anyone what they should and should not do. Recommendation #12. Third sentence; at site (ADD "enhanced for") (DELETE "of") concentrated shooting (ADD "and at all trail heads") during anticipated high use periods and, etc. Note all forms of recreation need improved oversight and management) Recommendation #16. Last sentence at the beginning (ADD the word "Physical") enhancements should be limited (ADD the phrase "yet specific to each site accommodating the specific shooting discipline determined as appropriate for each site"). Recommendation #16. Third paragraph; Make limited enhancements for short to mid-range (ADD the word "Rifle") (DELETE the word "and") (ADD the word "plus") shotgun/trap. Note; This is necessary to define that the site is being enhanced for two distinctly different shooting disciplines.

If WDFW is working on providing the public with a new website that is easy to find and understand, they need to use that website's address on all the new education and signage they are creating.

The only major point on which I disagree is East Umptanum, and I can live with that. Some Audubon members have expressed concerns about lead, and safety in the Buffalo Road/Skyline Trail area for hikers/wildflower/birding users.

I'm still working on these.

## Wenas Target Shooting Advisory Committee

### Public Comments Received via Web

Date	Category	Comment
12/10/2017	safety, signage	Hi- I'd like to report a recent incident and offer thoughts on preventing it in the future. Yesterday, 12/10/17 I was returning to my truck from hunting. Truck was parked at the fenced off designated parking area on Durr Rd., about a mile south of the turnoff from Umpatnum Rd. I was coming down the old double track from the East heading toward the yellow gate. I saw another truck and people moving at the gate, and when I was within about 2-300 yards the people shot directly down the road toward me. I heard the shot, a ricochet even closer, and yelled my location. When I got to the gate and told them that lots of hunters, hikers and horse riders use that trail, and they need to move to an area that is safe and where they are shooting into a hill. They understood and clearly felt pretty bad, which they should have because they were shooting directly at me and well within range. I think the dispersed shooting is fine, but there are areas where shooting is just a horrible idea. Trailheads should be an obvious one, but as demonstrated by this incident clearly isn't. I think this area, and others like it, should be no shooting zones. That does not mean dispersed shooting should not be allowed. It just means there are places we can identify that are clearly not safe and shooting should not be allowed there. If that is too difficult for everyone to agree upon, we at least need signage to make people aware that these areas are actively used and shooters need to be 100% certain of what is downrange of their target. Of course, these signs will be the first target of many shooters. I'm not sure what the solution to that is, perhaps the signs can be made inexpensively and planned to be replaced on a regular basis.
11/27/2017	Shooting safety	I like to hike and upland bird hunt. The existing shooting area on Durr rd. At Cottonwood canyon is a tragic accident waiting to happen. The target shooters shoot directly up the draw. This is a pheasant release area and has opportunities for quail and chukar hunts. Public areas to hunt are few and far between. WDFW relies on hunting licenses for a deal of their budget and needs to protect the rights and safety of hunters also. A well regulated target area is needed in an area that will not impact other beneficial uses that public areas provide. I have hunted in Washington for 57 years (since I was 10) and have bought licenses every year to hunt. Why not require a license to target practice. I realize I am a bit late with this comment but hope you take it into account. I would be happy to participate in the future if you need further help. Thank you.
10/6/2017	shooting	Myself and a bunch of my friends would like a designated place to go target shoot for fun and for practice
10/4/2017	Safety, shooting	I do not want a firing range near my property where I have to worry about a stray bullet hitting my kid. Also the fire danger is very high, I still remember the fire on memorial day, were I could of lost my home. I just heard about this proposal, why were property owners not informed?
8/28/2017	SHOOTING	I don't see how shooting and wilderness area go together.
7/25/2017	Management, safety, fire and shooting	First off, I am not against gun ownership or target shooting. I am however very concerned in regard to fire, destruction of public land by fire, and garbage that is left behind. I'm concerned with those who are going to the shooting range that have no training or knowledge of guns or gun ownership. They are young people that come out from Yakima. They have no gun safety skills at all and show up in groups. I'm not sure how it would work but I would like to see the range

		<p>somehow regulated for the sake of safety and saving public land. I'm not sure how it would work but if a foundation could be set up to manage the range area. Would volunteers be allowed to go onto the land with equipment and build safety bunkers to shoot into much like the shooting range in Moxee. People pay a tag fee to hunt. I don't see a problem with a range fee/pass. People pay to ski, boat, and hunt on public land. I'm not sure if a discover pass is needed in the area or not. Is there such a thing as grant or federal funding for development of public lands? We don't go to the shooting area because of problems we have seen and heard about from others. We can hear the rapid fire of high powered guns from our house. I know we have the option to call the sheriff. However, by the time an officer can become available the problem people have left. Sadly, we have come to a point in time where people are not responsible with their actions and not much is free anymore. It costs money to maintain public areas and pay fire fighters. Another options, put the land out for a lottery, new winner each year, to rent the public land to pasture sheep or cattle in the areas that are at high risk of fire. There is a lot of grass that is going to waste and becoming fuel. Grazing rights could be limited depending on the available grass on a year to year basis. A contract agreement could have something like any animals left beyond the exit date would become property of the state and sold at a livestock sale. I know some people think that wildlife eat all the grass. We live next to the LT, wild life is not eating the grass, but it burns really well. A huge THANK YOU to all the fire fighters!</p>
07/03/2017	General	<p>The Wenas is a very desirable destination for bird watching. Parts of it are designated as an IBA (Important Bird and Biodiversity Area) by BirdLife International. The Audubon chapters of Washington have met for a Memorial Day campout in the Wenas campground for well over half a century, due to the great birding. Birdwatchers utilize the Wenas WA heavily from late-April throughout the summer and early fall. While I used the term "birdwatcher" above, we actually call ourselves "birders", as watching is only a small part of our activity. The most important sense is the sense of hearing, for birds regularly sing and call, and they can often best be identified by voice alone. We find the birds by sound. So a quiet environment is essential for birders. This is doubly true because most birds will pause their singing if they sense a threat. Loud noises such as gunfire definitely decrease bird songs and calls. Therefore, I strongly encourage you to limit target shooting to a small number of sites within the Wenas WA. The sound of gunfire travel very far, disrupting bird life in large areas. Minimizing the number of areas subjected to loud gunfire is the only way to mitigate this effect.</p>
06/19/2017	The topic of my inquiry has to do with the relationship of the "Citizens Advisory Group" or similar clones that have been developed to make decisions regarding public lands management.	<p>Although the Citizens Advisory Groups were originally intended to advise, they seem to have expanded their influence to issues like the site for the original shooting range next to buildings and the building of the Wenas Chapter parking corral. Both of these projects did not have to pass a public hearing and although the corral was probably needed, not sure how it escaped the scrutiny of the public hearings. My question to the committee is, after you have made some decisions, will be Citizens Advisory Groups be able to overrule your work and conclusions over the next few months?</p>
06/18/2017	General	<p>People are going to shoot in the woods. Providing safe areas with good backstops and reduced risk of fire will make the woods and general public safer. Please do not listen to the antigun crowd that will pack meetings with their imported agenda. I've seen it happen often enough to know it's a thing.</p>
06/15/2017	General	<p>If people want more public lands open for shooting, make them pay money for the privilege. It's not free.</p>

06/14/2017	recreational shooting	Please continue to keep the Wenas Wildlife area open to recreational shooting. It is a family tradition for us and a time honored right the citizens of this nation enjoy.
06/14/2017	Shooting	As a person born and raised in Washington, with multi-generational family roots including the Yakima / Kittitas areas, I implore you to not use your committee to undertake bans or draconian anti shooting measures of a political nature. Of course, firearms safety must be exercised not matter where shooting or hunting occurs, and shooters must observe them. If the issue is debris, arrange for trash collection receptacles or periodic dumpster delivery for cleanups. In my experience, shooters clean up when they can, and sometimes have cleanup parties. If the issue is fire suppression, make sure your shooting backstop areas are clear of sagebrush and tumbleweeds. Banning steel plates and tracer ammunition may be in order if this won't work. Banning "tannerite" exploding targets is also something to consider. However, I do not support eliminating shooting areas in a politically motivated manner whatsoever. For those that don't like shooting, they don't have to! But they should also stay away from those that do.
06/14/2017	Hunting	Please keep the Wenas Wildlife area open to hunting.
06/14/2017	Shooting	Dear Sir: I would like all of the Wenas area to remain open to public shooting, as it currently is.
06/14/2017	shooting	Am against "target" shooting in the Wenas or any other hunting area. There should be designated target shooting areas outside the hunting grounds.
06/13/2017	Shooting	It seems borderline absurd to limit shooting to one or two areas. With the growth of the shooting sports this would put many shooters in the same area. Needless to say safety is going to be a real concern for everyone. One would think that four areas would be a minimum. It also seems like two areas will be an enforcement nightmare. My 2 cents. Thanks to all serving on this committee. Dennis Chapman
06/13/2017	General	I believe that recreational shooting should always be allowed in public lands. I also believe that the WTS and public should draft and pass a joint rules and guidelines for the Management, Safety, and any funding needs.
05/20/2017	safety	Two issues: (1) On 5-18-17 early evening I heard shots towards my house. I live near Black Canyon Road and my property borders state land but not by the elk fence. You can't see my house from Wenas Rd or BC road. The target shooters were behind a big natural berm which was good, but there is no way for them to know that my 2 horses in their corral and I were right over the top. Had they shot too high it could have been bad. (2) I never know where people are going to be shooting in the Black Canyon area or in the LT Murray. If I did, then I could avoid those areas when riding.
05/16/2017	General	For the roster of members, could you please post the member affiliation and/or interest that they are representing (i.e.- NRA/target shooting, Rocky Mt. Elk Foundation, resident, hunter, horse back rider, mt biker, horse back rider, Sierra Club, etc.)

# Wenas Wildlife Area Target Shooting Advisory Committee—Report and Recommendations

December 2017

## Signature Page

The Wenas Target Shooting Advisory Committee Report and Recommendations describes consensus recommendations of the Committee and, on topics where agreement was not reached, describes the different perspectives held by Advisory Committee members. Consensus was defined as a recommendation that all Committee members could support or live with, even if it was not their preferred alternative.

The Committee presents this report and recommendations to WDFW and looks forward to the prompt and complete implementation of its recommendations. Many Committee members also are available to continue to work together to find common ground on topics where agreement was not reached in a next phase of this effort.

---

John Baranowski

---

Steve Miller

---

Lee Davis

---

Clay Myers

---

Bill Essman

---

Craig O'Brine

---

Tim Funkhouser

---

Norm Peck

---

Bret Hollar

---

Mark Pidgeon

---

Keely Hopkins

---

Scott Robertson

---

Walt Hyde

---

Robert Schafer

---

Brian Lund

---

Tanya Stanley

---

Jim Lydigsen

---

Rachel Voss

Received on behalf of WDFW: \_\_\_\_\_

Mike Livingston, Regional Director

The Committee process was facilitated by Ross Strategic under contract to WDFW. The report and recommendations was prepared by Ross Strategic on behalf of the Committee, and reviewed and agreed to by Committee members.



## Table of Contents

I. Background and Introduction .....	4
II. Information Considered During Committee Deliberations.....	5
A. Management History and Priorities at the Wenas Wildlife Area .....	6
B. Existing Rules and Regulations for Shooting on Public Lands.....	6
C. Use and User Groups at the Wenas Wildlife Area .....	7
D. Safety Concerns and Complaints .....	7
E. Enforcement .....	8
F. Fire .....	9
III. Recommendations .....	10
A. Education and Outreach .....	11
B. Enforcement .....	16
C. Enhancement of Select Sites for Concentrated Shooting.....	18
D. Implementation .....	25
IV. Conclusion.....	26

## I. Background and Introduction

This report provides recommendations from the Wenas Wildlife Area Target Shooting Advisory Committee (“WTS Advisory Committee” or “Committee”) to the Washington Department of Fish and Wildlife (WDFW) regarding shooting opportunities on the Wenas Wildlife Area. The 105,000-acre Wenas Wildlife Area is located in Yakima and Kittitas counties, and includes Washington WDFW, Washington Department of Natural Resources (DNR) and federal Bureau of Land Management (BLM) lands managed primarily by WDFW. Dispersed shooting has long occurred on the Wildlife Area and will continue. Other recreationists also will continue using the Wenas Wildlife Area for activities such as hunting, watching wildlife, mountain biking, hiking, riding horses, and driving the green dot roads.

The WTS Advisory Committee represents broad recreational and neighbor interests in the Wenas Wildlife Area, and is comprised of ~~1820~~ members representing: neighbors and affected landowners, hunters, target shooters, horseback riders, mountain bike riders, hikers, wildlife watchers, bird dog trainers, motorized users, and others. WDFW sent a broad invitation asking stakeholders to apply to participate in the WTS Committee. WDFW selected Advisory Committee members based on the following:

- Active user of the Wenas Wildlife Area
- Acceptance of the basic problem statement and Committee purpose and objectives
- Interest in developing a sustainable solution to recreational target shooting management at Wenas Wildlife Area
- Past experience with collaborative processes
- Ability to represent a broader user group constituency
- Willingness to participate in regular Committee meetings

[A list of Committee members is in Attachment 1.](#)

The Committee met eight times between May and December 2017. Government agencies including WDFW and DNR participated in the Committee as Ex Officio participants. Local elected officials also (at their discretion) participated as Ex Officio participants. Ex Officio participants served as resources to the Committee. In addition to full Committee meetings, small subgroups of Committee members met numerous times to identify sites to recommend for improvement for concentrated shooting in the north and south areas of the Wenas Wildlife Area.

Public input was important to the Committee process. All Committee meetings were open to the public and opportunities for public comment were provided at each meeting. WDFW also hosted, and numerous Committee members attended, four listening sessions to facilitate the Committee receiving public input. Finally, the Committee maintained an on-line public comment form. Summaries of Committee meetings, listening sessions, and online comments are available at the [Committee website](#) [and in Appendix A.](#)

The Committee considered a variety of information in its discussions including information on WDFW management history and priorities for the Wenas Wildlife Area; existing rules and regulations applicable to shooting on public lands; complaints, concerns, and enforcement at the Wenas Wildlife Area; and, fires, littering and trash. Information considered by the Committee is summarized in Section II.

The Committee operated by consensus. For purposes of the Committee's deliberations "consensus" means that all members of the Committee can at least "live with" a recommendation, even if it is not their first (or even their preferred) choice. Consensus was evaluated through a variety of techniques, including one-on-one conversations with Committee members, straw polling during and between meetings, and documented review of Committee materials.

Ultimately the Committee reached consensus on most topics including recommendations addressing: increased education and outreach; the role of enforcement and need for increased enforcement resources; focused enhancements to increase safety at four sites that historically and currently have been locations of concentrated shooting activities; and a phased approach to implementation with continued engagement with the Advisory Committee going forward. Recommendations 1 – 15 in Section III describe the Committee consensus.

The Committee discussed but did not reach consensus on prohibiting certain types of firearms at enhanced locations, providing sanitation stations at enhanced locations for shooting, and how to address dispersed shooting in the vicinity of the Buffalo Rd. / Power Line crossing. The different Committee members perspectives on these topics are described in text under recommendations 8, 13, 14. The Committee also did not reach consensus on a set of principles to guide decision making on dispersed shooting. The Committee's deliberations on principals and Committee member perspectives are described in Attachment 2.

Even for the few topics on which the Committee did not reach consensus, there were many areas of common ground. It is possible that the Committee could reach agreement on these topics with additional time for deliberations. Most Committee members are interested in continuing to work with WDFW to see their consensus recommendations implemented fully and quickly and to continue deliberations on remaining topics. [summarize consensus here].

The Committee discussed but did not reach consensus on [summarize non-consensus issues here if needed]. For these issues, the report describes the full range of Committee Member perspectives and opinions.

Recommendations [and non-consensus issues if any] are described in Section III.

## II. Information Considered During Committee Deliberations

During early discussions, Committee members identified several types of information as important to informing the Committee's development of recommendations. In particular, Committee members were interested in gaining insight into the scope of safety and fire issues at the Wenas Wildlife Area.

Committee members sought information in the following areas:

- Wenas Wildlife Area management history & WDFW management priorities and mandates
- Existing rules and regulations related to wildlife area use
- Number of users, types of users, and when people use the Wildlife Area
- Safety concerns and complaints submitted to WDFW
- Enforcement by WDFW and other agencies
- Number of fires at the Wenas Wildlife Area and likely cause

Committee facilitators and WDFW worked with Committee members and member organizations to compile existing data in these areas and provide summaries and complete data sets to the Committee. A high-level summary of available data is provided in the following sections. Full data are available on the Committee's [website](#).

Overall, Committee members expressed frustration with the lack of detailed information available and noted that improved information collection will be needed to determine the impact of Committee recommendations, and to refine and adaptively manage actions at the Wenas Wildlife Area over time.

#### **A. Management History and Priorities at the Wenas Wildlife Area**

The Wenas Wildlife Area was created in 1997 by combining portions of the L.T. Murray and Oak Creek wildlife areas. WDFW is the primary land manager for the Wenas Wildlife Area, which includes lands owned by DNR and BLM. WDFW's management of the Wenas Wildlife Area is consistent with the Department's mission "To preserve, protect and perpetuate fish, wildlife and ecosystems while providing sustainable fish and wildlife recreational and commercial opportunities."

Since the Wenas Wildlife Area's inception, dispersed shooting opportunities have been available to the public; however, during the early 2000's WDFW began considering how to better manage dispersed shooting at the wildlife area. The Department's efforts were spurred by increasing public use not only from shooters but also from other users and associated concerns with user safety, trash, fire, and habitat loss.

One of WDFW's priorities is to continue offering shooting opportunities at the wildlife area while conserving habitat and providing safe recreational opportunities for all wildlife area users. To that end, the Department requested that the Committee provide recommendations which strike a balance between seven interrelated goals: (1) support by the local communities; (2) reduction in risk to wildlife area users and neighbors; (3) improved habitat protection; (4) reduction in fire risks; (5) identification of actions that are financially attainable and manageable; (6) improvement of predictability for all users; and (7) adherence to clear and concise standards.

#### **B. Existing Rules and Regulations for Shooting on Public Lands**

The three agencies (WDFW, DNR, and BLM) responsible for public land within the Wenas Wildlife Area each have their own rules and regulations governing shooting. In theory, the rules and regulations for each agency apply based on land ownership. However, the complexity of the checkerboard agency ownership within the Wenas Wildlife Area makes it impractical to try to enforce three different sets of rules and regulations.

Because of this, WDFW's enforcement desire is to apply WDFW rules and regulations across the entire Wenas Wildlife Area. WDFW's regulations for shooting on public lands (WAC 220-500-140 and WAC 220-500-220) were put in place before DNR's regulations (WAC 332-52-145) and are less detailed and less specific than DNR regulations. [The WDFW and DNR regulations on shooting are in Appendix B.](#) The lack of specificity in the WDFW regulations can present a challenge for enforcement. In addition, given the checkerboard nature of the lands, the difference between existing regulations can sometimes cause confusion.

Other law enforcement agencies, primarily Kittitas and Yakima County Sheriff's offices and the Washington State Patrol, apply the Revised Code of Washington (RCW) when responding to safety concerns at the Wenas Wildlife Area.

### C. Use and User Groups at the Wenas Wildlife Area

As part of its discussions, the Committee looked at available user data from WDFW to see if any conclusions could be drawn or patterns identified. Available WDFW data included demographic data from volunteer-administered surveys at the wildlife area, at commonly used concentrated shooting sites. The other primary background data source was from automated vehicle counters located at several key road sections within the wildlife area.

After reviewing the data, the Committee was interested to know more about when, where, and how people use the Wenas Wildlife Area. The Committee was also interested in gauging users' overall knowledge of behavioral expectations in relation to other users. The Committee designed an online survey with a series of questions intended to answer these questions. WDFW distributed the survey via its email distribution list for Wenas interested parties, a link to the survey was added to the Committee's webpage, and Committee members forwarded the survey link to their respective groups. In all, there were 602 respondents to the survey; a brief summary of responses is provided below ([complete survey results are provided in Appendix C](#)):

- [318 respondents selected shooting and 108 selected hunting](#) as their primary activity at the Wenas; hiking and nature walking were also popular activities
- The most popular locations for shooting were Durr Road ([58 respondents](#)) and Sheep Company Road ([57 respondents](#)), followed by Umtanum Road East ([34 respondents](#)) and West ([35 respondents](#))
- Users visit the wildlife area more in late spring and early summer, with a slight decrease during hotter late summer months; use increases again in the fall for hunting season – September and October – and then begins decreasing in November, with the lowest use in December, January, and February
- Weekends are the most popular for users, and Fridays; other weekdays had approximately even distribution of use.

[Results of the survey are in Appendix C.](#) More detailed analysis of the user survey results ~~may~~<sup>will</sup> help WDFW, and Committee members ~~(should they choose to continue advising WDFW)~~, determine potential conflicts from overlapping areas and times of use for different recreation activities.

### D. Safety Concerns and Complaints

WDFW tracks written complaints/concerns on an ad hoc basis. These complaints/concerns are received by various Department staff and through several other channels such as e-mail messages to WDFW staff, comment cards at public meetings, and letters. There is no formal tracking mechanism for written concerns or complaints – tracking relies on Department staff to save complaints and concerns in their working files.

Similarly, WDFW has no mechanism to track or record complaints or concerns that come from phone calls to the Department or are transmitted in one-on-one conversations between Department staff and the public (For example, if someone meets a WDFW employee on the Wenas Wildlife Area and complains about trash, a locked gate or a shooting incident, these complaints are not tracked unless they are subsequently submitted in writing and become a public record).

WDFW provided the Committee with all written complaints/concerns related to the Wenas Wildlife Area since 2004. During that time, 15 individuals described a first-hand experience where they felt unsafe due to shooting activities. [These reports are in Appendix D.](#) ~~(See Attachment 1)~~. The Committee attempted to reference the first-hand shooting experiences with WDFW enforcement data and was not able to document that any of the experiences were reported to or investigated by WDFW enforcement.

For the most part, complaints/concerns were sent in well after the fact, making an investigation impossible. In some cases, the dates are vague or not provided and therefore cannot be matched with certainty to enforcement data. WDFW enforcement staff told the Committee anecdotally, that, in most cases, by the time an officer arrives on scene of a reported shooting-related complaint at the wildlife area, the party that was shooting has already left the scene and it is practically impossible to assess what occurred.

## **E. Enforcement**

The WTS Advisory Committee received enforcement data from the Kittitas County Sheriff's Office and WDFW Region 3 Enforcement staff.

### **Kittitas County Sheriff's Office**

The Kittitas County Sheriff's Office reviewed their records of calls/contacts on the Wenas Wildlife Area from 2010 to present. During that timeframe, there were 13 target shooting-related calls logged as occurring on the Wenas Wildlife Area. On further investigation, 12 of these calls were on state land and one was on private property.

Of the 12 target-shooting related calls on state land, two were confirmed as illegal shooting that represented either public risk or a criminal violation, and for which citations were issued. Of the other 10 calls, five were from members of the public requesting information on where to shoot legally, four were investigated and confirmed to be legal shooting activity, and three were reported as fire hazards.

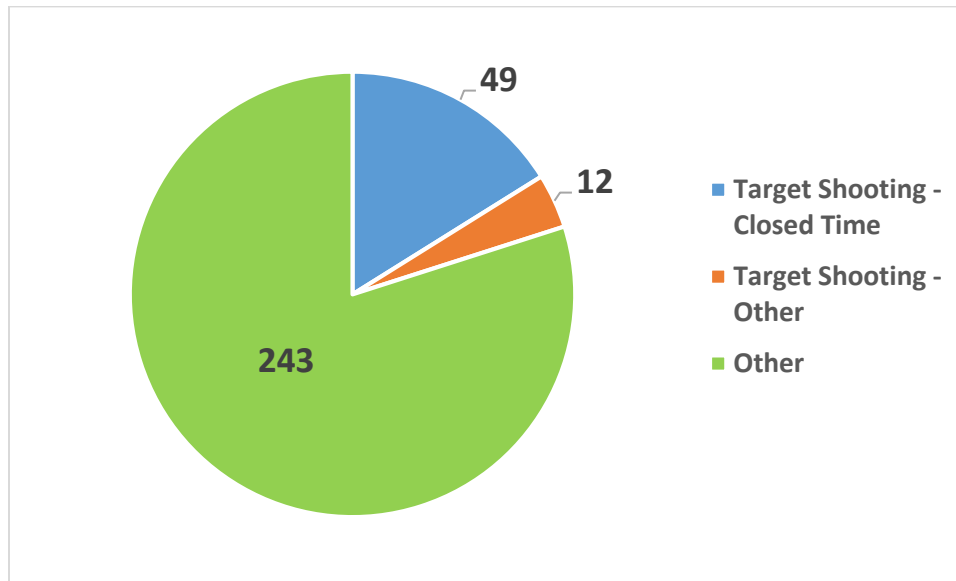
### **Yakima County Sheriff's Office**

According to information drawn from a public disclosure request, from 2010 to March 2017 Yakima County Sheriff's Office recorded 15 total shooting-related responses on the Wenas Wildlife Area. Of these 15 responses, 10 were confirmed as shooting outside of allowed hours, two were investigated and found to be legal shooting activity, two were investigated and found to be unsafe shooting and education/information was provided, and the reasons of the remaining response could not be determined. There are no records of citations issued.

### **WDFW Region 3 Enforcement**

WDFW Region 3 enforcement does not have data to summarize or evaluate contacts/calls that did not result in enforcement action, only summary data on citations issued (i.e., they do not track incidents of public contact or verbal warnings issued; only citations). Between July 2013 and July 20, 2017 there were 61 target-shooting-related citations issued on the Wenas Wildlife Area; 49 were for "Target Shooting - Closed Time" and 12 were for "Target Shooting - Other." During the time period examined, target-shooting-related complaints represented 20% of the total citations issued on the Wenas Wildlife Area (see Figure 1 below). WDFW is not able to further break down citations by geography (i.e., in their tracking they do not distinguish between the north and south ends of the wildlife area).

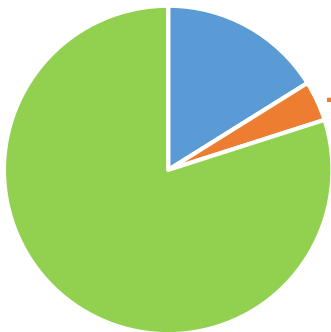
Figure 1: WDFW Citations at Wenas Wildlife Area (7/2013 to 7/20/2017)



The 12 enforcement actions for “Target Shooting – Other” included failure to remove target material, illegal targets, and use of exploding targets; Details are provided in Table 1 below:

Table 1: Shooting-Related Enforcement Data by Incident Type/Citation

Incident Number	Incident Type/Citation	Number of Citations Issued
WA-16-003284	Failure to remove target material	1
WA-14-000036	Illegal Targets	3
WA-14-001492	Illegal Targets	1
WA-15-005591	Illegal Targets	2
WA-15-010197	Illegal Targets	1
WA-13-013163	Use Exploding Targets	2
WA-14-004992	Use Exploding Targets	1
WA-16-001910	Use Exploding Targets	1



## F. Fire

Between 2003 and 2014 there were 30 fires at the Wenas Wildlife Area that burned approximately 11,700 acres and cost nearly \$3 million in fire suppression and subsequent habitat restoration. WDFW and the Advisory Committee had extensive discussion of fire data for the Wenas Wildlife Area to try to determine with some certainty how many fires could be attributed to target shooting. The Committee specifically discussed 15 of these fires because of evidence suggesting they were caused by human activity.

For six of the fifteen fires discussed, the individuals responsible for starting the fire called 911 and reported that the fire started as a result of target shooting; these claims were investigated but the exact cause was not definitively determined and no charges resulted. For the remaining nine fires discussed, WDFW is confident that the fires were human caused but acknowledges that, because their fire

investigation is focused on documenting the response costs and damages from fires, not on establishing cause, they cannot be certain as to what human activity caused the fire. While the exact number of fires that can be attributed to target shooting is not known, given that there is *some* fire risk from shooting activity, the Committee recommendations include steps to mitigate fire risk at concentrated shooting sites.

In 2012 WDFW began implementing time-of-use restrictions on shooting at the Wenas Wildlife Area. Although the exact dates of these restrictions vary, they generally begin in late May or early June and remain in effect through the end of September. In 2012-2014 shooting was prohibited after 11:00 am; from 2015-2016 shooting was prohibited after 10:00 am. From June 19 to September 30, 2014 and from July 1 to September 30, 2015 shooting was completely prohibited due to high fire risk.

### III. [DRAFT] Recommendations

The Committee is making four types of interrelated recommendations to WDFW.

~~A. Overall recommendations which describe a phased approach to improving the experience for shooters and all other users at the Wenas.~~

~~AB. Recommendations describing much needed education and outreach for all user groups and calling for significant increases in increased education and outreach activities and resources.~~

~~BC. Recommendations describing the role of enforcement and calling for increased enforcement resources.~~

~~CD. Recommendations for focused limited enhancements to increase safety at four sites that historically and currently have been locations of concentrated shooting activities to increase safety.~~

~~D. Recommendations on implementation which describe a phased approach and continued engagement with the Advisory Committee going forward.~~

In some areas the Committee reached agreement on the main recommendation but did not reach agreement on a related topics. Differences in perspective on prohibiting certain types of firearms at enhanced locations, providing sanitation stations at enhanced locations for shooting, and how to address dispersed shooting in the vicinity of the Buffalo Rd. / Power Line crossing, are described in text under recommendations 8, 13 and 14.

There were many areas of common ground even around topics on which the Committee did not reach agreement. It is possible that the Committee could reach agreement on these topics with additional time for deliberation; however, that time was not available during this phase of the process.

In addition, the Committee deliberated at length to try to reach agreement on a set of principles to inform ongoing decision-making and management of dispersed shooting on the Wenas. Ultimately the Committee did not reach agreement on this topic, due largely to differences in perspective on the meaning of WDFW's mission for management of shooting and other forms of recreation, and differences in perspective on the priority of shooting relative to other forms of recreation. The Committee's deliberations on this topic and the different perspectives expressed are described in Attachment 2. As with other topics on which the Committee did not reach agreement, there were many areas of common ground and it is possible the Committee could reach agreement on this topic with additional time for deliberation.

WDFW requested the Committee develop recommendations which meet the Department's mission: "To preserve, protect and perpetuate fish, wildlife and ecosystems, while providing sustainable fish and wildlife recreational and commercial opportunities" and which: (1) are supported by the local communities; (2) reduce risk to Wildlife Area users and neighbors; (3) improve habitat protection; (4) reduce fire risks; (5) are financially attainable and manageable; (6) provide predictability for all users;



and (7) adhere to clear and concise standards. The Committee believes that these recommendations, taken as a package, meet this request and represent an appropriate balance between the multiple goals WDFW expressed for this effort.

The Committee notes that these recommendations are not intended to affect hunting. The Committee recommends no changes to, or limitations on, legal hunting within the Wenas.

**[12/12-- Discussion of the concepts in draft recommendation 1 was moved to Attachment 2; there does not seem to be agreement on these concepts.]**

**[12/12 -- Recommendation 2, on phasing, and recommendation 3, on continued involvement of the Committee, were moved to a new section D on implementation, unchanged.]**

#### **BA. Education and Outreach**

Education and outreach are the cornerstone of a long-term strategy to improve safety, reduce littering, reduce fire risk, ensure habitat protection, and create a better overall environment for all users at the Wenas Wildlife Area. Committee recommendations are based on the notion that visitors to the Wenas Wildlife Area need the following types of information to recreate safely and compatibly with other users:

- When are you entering the Wildlife Area?
- What are the applicable rules/regulations for each user group?
- What are the expectations for each user group (shooters, horseback riders, hikers, mountain bikers, dog trainers, motorized users)? How can each group behave responsibly, both within its own activity and around other types of activity?
- Where are more commonly used areas for shooting?
- Where are more commonly used areas for other uses?
- Where are habitat conservation areas?

The Committee believes most people are interested in doing the right thing (or doing things the right way), and that the main obstacle to being able to do this is a lack of information. The Committee's recommendations address this information gap through several different approaches, most prominently:

- Development of clear materials describing what types of uses to expect at the Wenas Wildlife Area and requirements and best practices for various uses, including shooting
- Improvements to WDFW's website to make it easier to find materials, as well as rules and regulations
- Aggressive and coordinated distribution of materials
- Increased staff presence at the Wildlife Area during peak use times
- Better signs and maps
- Continued and increased use of volunteers to amplify education and outreach efforts (including the Crime Observation and Reporting Training (CORT) course)
- Presentations and information sharing at user group meetings

Except for recommendation [eightfive](#), which the Committee understands will take longer, the Committee recommends all the education and outreach recommendations be part of Phase 1 and that they be implemented by WDFW as soon as possible. The Committee also notes that education and outreach is ongoing and will not be "complete" at any specific point in time.

**1. WDFW should develop and install clearer and increased signage at the Wildlife Area including at all access points and at areas enhanced for concentrated shooting and all trail heads.**

The Committee believes that signage at the Wenas Wildlife Area could be improved for clarity of message as well as general visibility. WDFW should develop a strategy around both the content and placement of signage in and around the wildlife area as part of its overall education and outreach efforts – this should ensure the right sign, with the right information, at the right place. The Committee is sensitive to the notion of “sign pollution” and “sign overload” and has structured its recommendations to highlight only the types and locations for signage that it believes are most necessary. Specifically, signs are recommended at the following locations:

**A. Access points.** Signs at access points should include information welcoming users to the Wenas Wildlife Area and describing the various uses that might be encountered, including shooting, indicating where various uses that might be encountered, and encouraging respect between user groups. Information at access points should give users the ability to easily locate themselves on the map of the wildlife area and understand the relative locations of roads, trails, areas enhanced for concentrated shooting, and other major uses (e.g., the designated dog training area). Including a map on entrance signs would meet this need.

**B. Locations enhanced for concentrated shooting.** Signs at locations enhanced for concentrated shooting should include:

- The type of firearm best suited for discharge at each location
- The intended shooting lanes and direction of fire
- Requirements and expectations for shooting behavior
- Fines and penalties if requirements are not met
- Specific (directional) information on other nearby uses and users shooters might expect to encounter. Paragraph C below identifies an initial set of these areas. Additional areas, if necessary, should be identified in coordination with the Advisory Committee.

~~The Committee discussed but did not reach agreement on the idea of prohibiting use of certain types of firearms at the locations enhanced for concentrated shooting, and listing the prohibited firearm types on signs at the enhanced locations. Committee Members who support prohibiting use of certain types of firearms at locations enhanced for concentrated shooting believe that shooting at these locations should be limited to the types of firearm best suited for discharge at that location. For example, at the Sheep Company enhanced site, rifle and pistol shooting would be encouraged and shotgun shooting would be prohibited. This is intended to provide more space for the firearms best suited for each location so the locations can serve more users. Committee Members who did not support prohibiting certain types of firearms at locations enhanced for concentrated shooting were comfortable encouraging use of the firearm best suited for that location but were not comfortable prohibiting use of firearms that, while not the focus of the enhancements, could nonetheless be safely discharged in compliance with applicable regulations. [12/12 – this text is more related to enhanced sites and therefore was moved to the discussion of that recommendation and revised to address comments received during straw polling; language on signs was maintained in that section.]~~

**C. Known areas of likely heavy overlap between shooters and other users.** Areas near or adjacent to locations enhanced for concentrated shooting, and areas where shooting has historically been practiced that are not planned for enhancement, where topography, lack of adequate backstop, the crossing of

trails or roads, or the proximity of houses render shooting unsafe should be signed. For example, the Committee has identified three such areas so far:

- The user defined “cut off” trail to access the Skyline trail in the vicinity of the at-Buffalo Road / Power Lines crossing, which has heavy use by hikers and horseback riders
- The Umptanum creek crossing at Durr Road
- The Umptanum Falls parking area

Signs also should be placed on trails, roads, and other routinely used locations to notify users that they are near an area enhanced for concentrated shooting. For example, the Committee has identified one such area so far:

- The Cottonwood drainage (above Sheep Company) warning hikers and horseback riders they are nearing an enhanced area used for concentrated shooting

The Committee emphasizes that areas signed in these ways should be identified in consultation with the Advisory Committee and with an eye towards limiting signs to only the locations most in need of them to reduce the overall number and type of signs on the wildlife area. Good maps showing roads, trails, and areas enhanced for shooting should go a long way towards providing the necessary information and should minimize the need for signs.

The Committee acknowledges that signs alone are not enough to curb inappropriate behavior or educate the public about “where to go and what to do” at the Wildlife Area. The Committee also acknowledges that signs may be vandalized or destroyed and will require regular maintenance or replacement (as one Committee member said, “Whoever invents a bullet proof sign will be a very rich person”). However, proper signage is still an important part of education for visitors to the wildlife area and should not be neglected. All signs should include the web address for WDFW’s re-designed website to help users easily find additional information.

***2. WDFW, working with user groups such as those represented on the WTS Advisory Committee, should develop simple and clear educational materials for all users of the Wenas Wildlife Area, with a particular emphasis on clear materials addressing regulations, ~~and best practices,~~ and codes of public conduct for shooting and recreation on public lands.***

Educational materials should describe requirements and conduct expectations on public lands and where on the Wenas Wildlife Area users might expect to encounter different activities. At a minimum, this information should address:

- Different uses at the wildlife area and common locations of different uses including roads, trails, horse riding areas, dog training areas, locations enhanced for concentrated shooting, and other relevant information on where different uses commonly happen
- Different types of habitat at the wildlife area and plants and animals which depend on the habitat
- Requirements for public conduct
- What constitutes an adequate backstop in a natural environment
- “Good Neighbor” expectations for what users should expect when encountering other uses, and polite behavior/etiquette between user groups

Materials could include one-page handouts, flyers, maps (see also recommendation 6-3 on maps, below) or postcards. They could even include paper targets with safety/use information printed on the back. As

with other materials, WDFW should make these resources easily accessible through the redesigned, easier to use website, and all materials should include the web address for WDFW's redesigned website to help users easily find additional information.

WDFW does not have to start from scratch to develop these materials; other public agencies and organizations have developed materials that could be adapted for use at the Wenas Wildlife Area.

Examples include:

- DNR
  - o [Shooting Flyer](#)
  - o [Mountain Biking Flyer](#)
  - o Multiple Use Flyer
- Trash No Land
  - o [Brochure: Common Rules for Shooting on Public Lands](#)
- National Shooting Sports Foundation
  - o [Fire Warning Flyer](#)
- BLM
  - o [Shooting Flyer](#)

**3. WDFW should develop maps showing access points, primary roads and trails, areas *managed enhanced* for concentrated shooting, and any other designed use areas (e.g., dog training areas).**

Maps should be available on paper (for handout), prominently posted at all entrances and trailheads, and readily available online. They could also incorporate information on times of year when uses increase. Committee members note that the Green Dot map is a successful example of a clear, easy to understand map that indicates the appropriate trail system for motorized use at the Wenas Wildlife Area. It might be used as the basis for the more comprehensive map recommended here. A similar approach should be undertaken for other uses. An [example map](#) showing multiple uses was recently developed for the Teanaway Community Forest.

**4. WDFW, working with groups such as those represented on the WTS Advisory Committee, should ensure broad distribution of educational materials and maps via multiple distribution methods.**

Educational materials will only make a difference if they get in the hands of users. WDFW should consider and to the maximum extent practical, make use of, the following distribution methods for educational materials:

- Outreach to local stores that sell firearms and ammunition (for example, ask retailers to hand out a “best practices” flyer when people purchase a firearm and/or ammunition)
- Shared at events (including sharing by supporting organizations, e.g., shared at the NRA table at the Central Washington fair)
- Available at WDFW offices and easily locatable on the WDFW website
- Shared with local groups such as NRA chapters, Mule Deer Foundation, Field and Stream, 4H clubs, Master Hunters, Backcountry Horsemen, mountain bikers, local Audubon chapters, and hiking groups (note: this list is not comprehensive and is meant to illustrate that there are many local groups that could help distribute information)
- Distributed to local law enforcement and fire departments
- Distributed to Central Washington University for distribution to incoming classes and, particularly to University police and the part of the University that operates firearms lockers for students

- Shared at presentations and meetings with user groups

People take in information from a variety of sources and methods, from television to newspaper to Facebook posts. Educating the public on proper use at the Wenas Wildlife Area is no different, and will require a mix of traditional media outreach, social media channels, and personal contact such as talking with users at trailheads, meeting with local groups, and having a presence at local events.

Recommendations [85 through 117](#) below address the notion that successful education and outreach will require not only written materials but also one-on-one contact with Wenas users.

***5. WDFW should increase Department staff presence at the Wildlife Area especially at high-use times to offer information to users.***

Every public contact is an opportunity to educate people on appropriate use of the wildlife area. WDFW staff should take advantage of these opportunities by handing out informational materials and communicating with members of the public whenever possible (for example, if WDFW staff are undertaking maintenance work and encounter a group of hikers, take the opportunity to provide information). Additionally, WDFW should coordinate staff efforts related to education and outreach during times of high user activity such as weekends and the 2-3 weeks prior to hunting season when a large number of hunters typically access the wildlife area to sight in their firearms. As with other recommendations, local volunteer groups can bolster WDFW staff presence.

As part of rolling out the new educational information described above, the Committee recommends a concerted effort to increase staff visibility and get information in the hands of users by stationing WDFW staff and/or volunteers at heavily used entrances to the Wenas during days and hours of peak use (likely weekends) for at least 4 weeks to meet a broad cross-section of users and get them information. The Committee recognizes that resources are limited and that this sort of effort will involve decisions to move staff from other tasks to this work, and/or assign resources (managers, planners, etc.) that normally do not work in the field to temporary field duty. As described in recommendations [9-6](#) and [10-7](#) below the Committee also is recommending an additional staff position to focus on ongoing education and outreach, and ongoing and increased use of volunteers for education and outreach.

***6. To further increase Department staff presence at the Wenas Wildlife Area and provide for ongoing education and outreach, WDFW should create and fill the position of Outreach Liaison for WDFW Region 3.***

At a minimum, the Outreach Liaison should be tasked with coordinating distribution of education and outreach material to increase knowledge of expected behavior and what to anticipate among all Wenas Wildlife Area user groups, identifying gaps in education and outreach materials, and working with user groups to create new materials as needed. The Committee discussed whether this should be a Department staff or a volunteer position; ultimately the Committee determined that a Department staff position would more reliably fulfill this important role. The Committee recognizes that state funding for new positions is very difficult in the current state budget atmosphere. It encourages WDFW to collaborate with NGOs or other interested groups to explore joint funding for this position. Grant funding also may be available for positions such as this and should be pursued.

***7. WDFW, in coordination with local groups, should support and expand the use of volunteers at the Wenas Wildlife Area to help distribute information, continue cleanups, and assist with other activities in support of use of the wildlife area as appropriate.***

Volunteers have been, and will continue to be, an important part of WDFW's outreach and education efforts. While volunteers are not a substitute for WDFW staff, many of the recommendations described

above will be bolstered by volunteer actions, which WDFW can help coordinate to maximize outreach and education activities. In addition to the recommendations described above, volunteers might help WDFW by:

- Providing information at areas commonly used for shooting, to encourage safe and responsible behavior
- Providing information at wildlife area access points about where various types of uses are most likely to occur and how users can safely co-exist
- Expanding trash pickup beyond the annual cleanups, for example by creating an “Adopt an Area” program like the “Adopt a Highway” program

## **CB. Enforcement**

Enforcement is intended to back up education and outreach activities. Recommendations are focused on clarifying regulations for shooting on public lands and optimizing existing enforcement resources, with the understanding that additional resources may be difficult to obtain. However, the Committee is recommending at least one new enforcement officer (see Recommendation [129](#), below) and is supportive of WDFW budget requests to establish these new resources. The Committee understands that the Legislature makes decisions about WDFW’s budget.

Except for recommendation [11-8](#) to clarify requirements for shooting on public lands, and recommendation [15-12](#) on information management, which the Committee believes should be implemented as soon as possible, enforcement recommendations are intended to be part of Phase 2 after initiation of increased education and outreach.

### ***8. WDFW should revise its regulations on shooting on public lands (WAC 220-500-140 and WAC 220-500-220) to match DNR’s regulations on shooting on public lands (WAC 332-52-145) so the regulations are consistent.***

Currently, WDFW and DNR regulations for shooting on public lands are different. WDFW’s regulations for shooting on public lands were put in place before DNR’s and are less detailed and less specific. The lack of specificity in the WDFW regulations can present a challenge for enforcement. In addition, given the checkerboard nature of the lands, the difference between existing regulations can sometimes cause confusion. Revising the regulations for shooting on public lands to make them consistent would alleviate these concerns, clarify requirements, and simplify enforcement. In general, the Committee anticipates that the WDFW regulations will move in the direction of the DNR regulations in this revision; however, if there are concerns with the clarity of the DNR regulations, this also is an opportunity to address those. The outcome the Committee is looking for is one set of reasonably specific, reasonably detailed, clear regulations for shooting on public lands that execute existing requirements. One way to accomplish this is for WDFW to simply incorporate the DNR regulations by reference. Incorporation by reference has the added benefit of ensuring that the regulations would remain consistent into the future. As described more fully in the discussion of recommendation [413](#), the Committee also discussed but did not reach agreement on the idea of prohibiting use of certain types of firearms at the locations enhanced for concentrated shooting. Committee members who support prohibiting use of certain types of firearms at locations enhanced for concentrated shooting supported including these prohibitions in the regulations.

### ***9. WDFW should enhance coordination with local law enforcement, non-enforcement WDFW programs, and volunteer groups (as appropriate) to focus their available patrols and on-site***

*presence for the Wenas at sites ~~enhanced for~~ concentrated shooting and at trail heads during anticipated high-use periods, and should create and fill at least one additional enforcement officer position for Region 3.*

The Committee was briefed on the challenges associated with enforcement at the Wenas Wildlife Area. These included the need for enforcement officers to cover a broad area encompassing not just the Wenas Wildlife Area but other wildlife areas as well, the difficulty in responding quickly (i.e., which an incident is occurring) given the distances that must be covered, and the need to address multiple enforcement priorities at any given time. The Committee understands these challenges; the Committee also understands that WDFW Region 3 enforcement already devotes ~~50-60% of a significant amount of~~ available enforcement resources for wildlife areas to the Wenas Wildlife Area.

To address these challenges the Committee recommends a two-pronged approach. First, the Committee recommends that WDFW meet with local law enforcement, and other enforcement agencies, to discuss concerns at the wildlife area and develop a plan for emphasis enforcement patrols and presence. This should emphasize existing areas of concentrated shooting and times of known and anticipated high use. Education and outreach should be the focus of these patrols initially, however the focus should shift to issuing citations (when warranted) over time. Increased enforcement patrols should be coordinated with the increased presence of WDFW staff and volunteers (see recommendations ~~85-118~~) so the two activities can be mutually reinforcing.

Second, to supplement existing enforcement resources WDFW should add one additional enforcement officer for Region 3. The Committee understands that additional resources will be required to implement this recommendation and that Legislative action will be needed for these resources to become available. Committee members are willing to support WDFW in seeking resources to implement this recommendation.

***10. WDFW should collaborate with the Eyes in the Woods organization and offer one or more Crime Observation and Reporting Training (CORT) courses and related support for the Wenas Wildlife Area, preferably with an initial CORT course in early spring 2018.***

Eyes in the Woods is endorsed by Committee members as an important organization and the CORT program empowers hunters and others to report inappropriate behavior without the need for direct confrontation. The Committee recommends an ongoing partnership with Eyes in the Woods to routinely offer and support courses focused on the Wenas Wildlife Area.

***11. WDFW should improve existing tools and/or develop new tools to make it simpler for people to document and report illegal behavior.***

The ability to identify, understand, and manage concerns at the Wildlife Area depends on participation from users. WDFW currently has a text-tip line that can be used to report concerns; however, Committee members who have experience with the line found it difficult and cumbersome to use. The Committee recommends improvement of existing tools and/or development of new tools, so people can more easily communicate concerns and document and report tips and illegal behaviors. The Committee was especially interested in development of a mobile application for reporting. This could be similar (and perhaps use some of the same technology) as mobile applications the Department has developed for reporting invasive weeds and other invasive species.

***12. WDFW should improve its enforcement records management and work towards a records management system capable of producing analysis-ready reports specific to public safety.***

The Committee was frustrated by the limited information available on WDFW enforcement activities at the wildlife area and by the time (and level of effort) required to produce summaries and reports. Additional information on enforcement would allow better tracking and understanding of emerging problem areas and issues and promote more focused education and outreach, and more targeted enforcement follow up. At the same time, the Committee recognizes that records management technology is expensive both in the sense of acquiring the system and in the sense of training on the system and maintaining it. The Committee recommends that over time WDFW move towards a more robust records management system that can produce results similar to those available to most local law enforcement, including sufficient detail to allow for identification of “hot spots” of bad behavior, and tracking of public safety issues such as:

- Type of call (question, accusation etc.)
- Where, when, date/time reported, date/time investigated/ date/time closed.
- Type of closure (arrest, citation, filed with prosecutor for review, warning, unfounded, not sustained etc.)

#### DC. Enhancement of Select Sites for Concentrated Shooting

The Committee recommends that two specific sites at which shooting has historically concentrated be enhanced for continued concentrated shooting. The Committee does not recommend development of formal shooting ranges at these sites. Rather it recommends that the sites be clearly identified as areas enhanced for concentrated shooting so that all users can plan their activities accordingly, and that the inherent safety features of the sites be improved and amplified to make them more obvious to users, particularly users who may be unfamiliar with the Wenas Wildlife Area.

Locations recommended for enhancement for concentrated shooting were identified by Committee members after visiting many of the existing, user-defined, ad hoc locations of concentrated shooting. The Committee preferred to use existing, user-defined locations for the enhanced shooting sites, both because those locations are already known to and used by shooters, and because they already are impacted by active use, so relying on them minimizes disturbance of unimpacted habitat.

During their visits to the existing, user-defined, concentrated shooting sites, Committee members considered several factors such as: the inherent safety features of each area based on topography, surrounding land uses, other uses at the shooting area (e.g., proximity of trails), access, proximity to residences, history of user conflicts and/or real or perceived safety issues, and potential for fire response. The Committee preferred sites with inherent safety features that could be enhanced, sites with good access, near the entrances to the wildlife area, and sites with good fire response. In most cases, Committee members visited the sites multiple times, together in small groups, individually, and with staff from WDFW. In response to Committee member requests, WDFW provided information on areas under consideration for recommendation, including information on past evaluations of the sites. From these deliberations, the Committee identified four sites for further consideration for enhancement for concentrated shooting: Sheep Company Rd. and Buffalo Rd. in the South Wenas, and Durr Rd. and East Umtanum in the North Wenas. Committee members made additional visits to those sites, considered details of potential enhancements such as the types of firearms most appropriate for the sites, layout of firing lanes and directions, access, and construction of backstops. Committee members published the names and locations of sites under consideration in draft recommendations made available to the public and broadly distributed, and took comments on the locations under consideration at listening sessions in Selah and Ellensburg and at Committee meetings in September and October. Based on the additional site visits and comments received at the Committee meetings and listening sessions, the Committee ultimately decided to recommend Sheep Company Rd. and Durr Rd. be fully



enhanced for concentrated shooting – with enhancements designed to meet the needs of the shooting public and encourage shooters to use these sites over other sites that historically have been used (see recommendation ~~46~~13). The Committee is recommending enhancements oriented for shotgun shooting only for Buffalo Rd. (see recommendation ~~47~~14) and only limited, very specific, enhancements at East Umtanum designed to increase predictability and safety but not intended to draw additional use to that site (see recommendation ~~48~~15).

**13. WDFW should immediately identify existing concentrated shooting sites at Sheep Company Rd. and Durr Rd as locations to be enhanced for concentrated shooting, and should implement initial enhancements – particularly around education and outreach – at these sites as soon as possible and other enhancements as quickly as funding can be secured. Physical eEnhancements should be limited-focused and designed to increase the likelihood of safe and predictable behavior and encourage compliance with requirements and expectations.**

The Committee identified four existing locations of concentrated shooting for enhancement. Two – Sheep Company Road and Durr Road -- are discussed here. Buffalo Rd. is described in recommendation ~~47~~14, and East Umptanum is described in recommendation ~~48~~15.

At the existing concentrated shooting area at Sheep Company Rd. WDFW should make limited enhancements~~focused enhancements~~ for rifle and handgun with northeast orientation. Some Committee members believe provisions for shotgun also should be provided, and suggest that this be considered during phase II of the Committee effort.

At the existing concentrated shooting area at North Durr Rd. WDFW should make limited enhancements~~focused enhancements~~ for short-to-mid-range pistol and rifle, plus~~and~~ shotgun/trap. Some Committee members believe provisions for long-range shooting also should be provided, and suggest that the North Durr Rd. enhancements should be expanded to address this during phase II of the Committee efforts.

Enhancements should be designed to increase the likelihood of safe and predictable behavior and encourage compliance with requirements and expectations. The Committee had extensive deliberations on the types of enhancements that would be appropriate for enhanced concentrated shooting sites. The goal was to develop an approach to these sites that offered flexibility to make enhancements over time and could be implemented relatively inexpensively. The Committee recognizes that implementing these enhancements will require resources. Committee members are prepared to support implementation of these recommendations by supporting resource requests and with volunteer time.

The following limited-focused enhancements are recommended, in order of importance. They are recommended in addition to the signs at areas enhanced for concentrated shooting described in recommendation 4, earlier in this report.

- Install fences, signs, or other deterrents to prevent unsafe direction of fire. This is largely addressed in recommendation ~~41~~, but is reiterated here for emphasis
- Manage vegetation and install fire breaks to reduce fire risk, including clearing vegetation for a distance of at least 10 feet from backstops
- Improve backstops using existing materials from within the site where practical, commercially sold bullet traps, or other means to achieve a backstop that is at least 10 feet in height
- Identify shooting lanes and direction of fire and install separation berms of at least 8 feet in height between shooting areas

- Improve or relocate existing access roads so they are more easily accessible by passenger cars and improve parking including graveling parking areas, maintaining them relatively level and free of vegetation, and separating parking areas from roads and from shooting areas by rocks or other means
- Clearly mark intended firing lines with marking paint, signage, or other means
- Where practical, install durable bench rests for sites used for rifle shooting and durable elevated stands at sites used for pistol and shotgun shooting suitable for placing ammunition, supplies, tools, etc.
- Provide consideration(s) for the disabled
- Provide enhancements that will reduce the likelihood of littering, such as trash collection if feasible (note that the Committee recognizes that creative approaches may be needed for trash collection, since commercial collection may not be available at these locations)

Public and private grant funding may be available for these sorts of site enhancements and should be pursued.

Movement of lead in the environment should be minimized and safe removal (harvesting) of lead, if possible, is encouraged. Some Committee members suggested a separate, stand-alone recommendation on lead should be made. This idea was not fully discussed and consideration of it may be part of the next phase of the Advisory Group process.

The Committee also discussed, but did not reach full agreement on, enhancements to provide for sanitation stations (outdoor toilets). Some Committee members were in favor of outdoor toilets at enhanced shooting sites, while others were concerned that these facilities would present a safety hazard.

Some Committee members also suggested that the enhanced sites be referred to and managed as "Open Range[s]" as described in the US Department of Energy Office of Health, Safety and Security publication "Range Design Criteria" dated 6/4/2012. This idea was not fully discussed and consideration of it may be part of the next phase of the Advisory Group process.

Finally, the Committee discussed but did not reach agreement on the idea of prohibiting use of certain types of firearms at the locations enhanced for concentrated shooting, ~~and listing the prohibited firearm types on signs at the enhanced locations.~~ Committee members who support prohibiting use of certain types of firearms at locations enhanced for concentrated shooting believe that shooting at these locations should be limited to the types of firearm best suited for discharge at that location to increase safety and to provide more space for the firearms best suited for each location, so the enhanced locations can serve more users. For example, at the Sheep Company enhanced site, this would mean rifle and pistol shooting would be encouraged and shotgun shooting would be prohibited. ~~This is intended to provide more space for the firearms best suited for each location so the locations can serve more users.~~ Committee members who hold this perspective believe the types of firearms intended for use at the enhanced sites, and the types of firearms prohibited, should be listed on signs at the enhanced sites and readily available on the re-designed WDFW website.

Committee members who did not support prohibiting certain types of firearms at locations enhanced for concentrated shooting were comfortable encouraging use of the firearm best suited for that location but were not comfortable prohibiting use of firearms that, while not the focus of the enhancements, could nonetheless be safely discharged in compliance with applicable regulations. For example, at the

Sheep Company enhanced site, this would mean that shotgun shooting in compliance with applicable regulations would continue to be allowed even though the enhancements at the site are focused on rifles and pistols. They note that many shooters go out to shoot multiple firearms and would be unwilling to drive to different locations. Committee members who prohibiting certain types of firearms at the enhanced sites also noted that the schedule for enhancements at Buffalo Rd. is unknown, making a prohibition on use of shotguns at ~~at~~ Sheep Company particularly troubling to them. Some Committee members who were opposed to limiting use of certain types of firearms at the enhanced sites also expressed the concern that these limits might lead to the elimination of shooting altogether. The issue of whether to limit use of firearms at locations enhanced for concentrated shooting to only those firearms which are the focus of the enhancements was not resolved and will required further deliberations in the next phase of the Committee process. Overall, Committee members who commented on this issue emphasized the importance of education and outreach to increase the understanding of safety requirements and the compliance with them – and emphasized that this likely would go a long way toward curbing unsafe behaviors.

Appendix Attachment 3B includes conceptual drawings prepared by a Committee Member showing:

- A recommended approach to focused ~~limited~~ enhancements including a conceptual layout of shooting orientation, backstops, berms, firing lines, and lanes
- A conceptual drawing of enhancements at North Durr Rd.
- A conceptual drawing of enhancements at Sheep Company Rd.
- A conceptual drawing of enhancements at Buffalo Rd.

**14. WDFW should identify and enhance an area for concentrated shooting of shotgun at Buffalo Rd. approximately .8 miles north of the intersection of the power line and the green dot road. The orientation of the area should be discussed with the Advisory Group during phase II of this effort. As with Sheep Company and Durr Rd., enhancements should be ~~limited~~ focused and designed to increase the likelihood of safe and predictable behavior and encourage compliance with requirements and expectations.**

The Committee deliberated extensively about the Buffalo Rd. area. It is the location with the most reported perceived user safety concerns and has a high concentration of overlapping uses – with a user-defined access trail currently used to approach the Skyline Trail cutting through an area historically, and currently, used for dispersed shooting.

While the Committee was interested in identifying a site that could be enhanced to support a variety of firearm types at Buffalo Rd., ultimately, they decided to recommend enhancements oriented only for shotgun shooting. This is due to the high concentration of use in the area, the perceived difficulty of locating/laying out appropriate backstops for use of firearms other than shotguns, and the proximity of homes. The Committee could not, during this phase of the process, identify a site that all could agree on for additional enhancements.

The Committee identified a location for shotgun oriented enhancements approximately .8 miles beyond the intersection of the powerlines and the Green Dot road. Committee members recognized pros and cons to different orientations of an enhanced area at that location. Orienting the area to the north/northeast provides relatively level and open ground and more space for enhancements including parking. Orienting to the west/northwest may ease concerns over the potential for people to use inappropriate firearms; however, because of the topography and limited level space adjacent to the road it presents more of a challenge for enhancement. Ultimately, the Committee recommends that the

orientation of the enhanced site at Buffalo Rd be a topic of discussion for the next phase of the Advisory Committee effort, during which time a recommendation can be made.

Whatever the eventual orientation selected, Committee members agreed that the enhanced area should provide ample space for vehicle parking to encourage use by shotgun users while, at the same time, limiting disruption to habitat. Committee members noted that one advantage to enhancements for shotgun-only in this regard is that the shot drop field (estimated at approximately 40 acres) can remain in natural cover. Because backstops and side berms are not needed, enhancements necessary for shotgun-only at Buffalo Rd. will be significantly less than those recommended for Sheep Company and Durr Rd. (see Recommendation 1613). As with the Sheep Company and Durr Rd. enhanced sites, access will need to be improved and maintained so the enhanced area can be easily reached by passenger car. Also as with the Sheep Company and Durr Rd. ~~enhanced sites~~ enhancements, a safety zone around the enhanced area at Buffalo Rd. should be clearly signed to prevent users from accidentally wandering into the impact area. The Committee estimated the total area for enhancements, including parking, operating area, shot fall area, and safety zone at 70 acres, although, as discussed above, most of the acreage would remain in natural cover.

The Committee discussed but did not reach agreement on how best to address the area in the vicinity of where the power lines cross Buffalo Rd., which is currently used for dispersed shooting. This area has seen increasing use by multiple groups, including by horseback riders and hikers using a user-defined access trail to reach the Skyline Trail. Ultimately, four Committee members suggest that there should be a small area closed ~~the idea of closing a small area at Buffalo Rd to dispersed shooting at this location. The remaining 14 Committee members do not support this approach, or any closer of dispersed shooting in compliance with applicable requirements, and instead favor other approaches to reduce user conflicts and increase safety. Ultimately two [may need to update this number] Committee members favored such a closure and the rest [may need to update this number] did not.~~ The Committee members who were in favor of closing a small area in the vicinity of the Buffalo Rd. / Power Line crossing to dispersed shooting a small closed area at Buffalo Rd. believe that a closure is needed to ensure safety given that the area is heavily used by multiple user groups. They expressed concern that education and outreach, signs, enforcement, and encouraging use of the new enhanced shooting areas might not adequately reduce inappropriate shooting in that area, particularly shooting with high-caliber, long-range firearms. They note that much of this area appears to not be in compliance with rules for target shooting, especially for rifles or other long-range firearms, in that it lacks an unobstructed earthen backstop capable of stopping all projectiles and debris in a safe manner, or it involves shooting into a road or a trail. Ultimately, they believe that a prohibition on dispersed shooting in this area would best promote safety, given the specific conditions at that location. Most Committee members who hold this view do not support any other closers to dispersed shooting at the Wenas and are, in fact, supportive on continued support for dispersed shooting in compliance with applicable requirements.

While all Committee members shared concerns about safety, Committee members who were not in favor of closure of any areas to dispersed shooting in compliance with applicable requirements supported other means to achieve safety improvements. They believe the best approach is to ~~most did not support closing any part of the wildlife area, including at Buffalo Rd., to dispersed shooting in compliance with applicable rules and requirements. Instead, they recommend using~~ use the combination of education and outreach, signs, enforcement, and encouraging use of the new enhanced shooting areas to reduce inappropriate shooting behavior and increase safety as described in the rest of this report. They believe that user conflicts could be addressed by ~~Finally, the Committee discussed that over time, there also may be need to further increase separation of user groups at Buffalo Rd. Some Committee members supported discussion of increasing separation of user groups through~~ by, for

example, relocating the current user-defined access trail to the Skyline Trail, providing additional parking south and east of the current parking (as discussed in the draft Wenas Management Plan), and/or improving access and parking for the Skyline Trail trailhead, believing it to be the approach most likely to successfully provide for all users over time. Other Committee members expressed interest in enhancing a second (or alternative) site for shooting in the canyon east of Twin Canyons, which would provide increased user separation and, because of topography, could have the added benefit of providing for additional shooting disciplines.

Committee members who do not support closing any part of the wildlife area to dispersed shooting provided such shooting is in compliance with applicable rules and regulations also were concerned that such a closure would prioritize one or more user groups (e.g., hikers) over another (e.g., shooters), and that it would represent a “slippery slope” and might lead to more and more extensive closures over time. These Committee members recognize that if education and outreach, enforcement, encouraging use of the enhanced areas, etc., are not working there will be a need to reevaluate how to move forward; however, they favor giving these recommendations time to work before making decisions about what (if any) additional measures might be needed. They note that in their view, horses, hiking, and motor and mountain bike riding adversely affect habitat as much, if not more than, dispersed shooting.

Both groups of Committee members – those in support of a small closure and those not in support – expressed concern and frustration that one user group seemed to want to shut down an area for other users. Committee members in support of a small closure indicated that horseback riders and hikers were already limiting their use of the Buffalo Rd. area and would not use the area if dispersed shooting continues.

Committee members in support of continued dispersed shooting, provided it complies with applicable rules and requirements, felt that horseback riders and hikers were trying to take away a long-used dispersed shooting location for their convenience rather than working with dispersed shooters to try to come up with a solution. They note that a fuller exploration of the seasonality and days and times of use by various user groups should be part of any future discussion of a closure. Based on an informal public poll carried out by the Committee early in the process, it appears that shooting uses occur frequently and year around, while hiking and horseback riding uses may tend to be more seasonal, concentrated in spring and fall. More complete information – and discussion – of the seasonality of uses could help tailor future actions to better meet the needs of all users.

Regardless of their views on how best to address safety and user conflicts in the vicinity of the Buffalo Rd. / Power Line crossing, Committee members agree that the Buffalo Rd. area should be a priority for intense education and outreach efforts. These should include the access point signs and other signs described in recommendation 41, and a concerted effort to reach out to users and user groups to ensure that these individuals and groups are aware of one another and can plan their uses accordingly. The Committee also agrees ~~believes~~ that a number of the areas historically (and currently) used by dispersed shooters at Buffalo Rd. ~~may are~~, in practice, not be in compliance with requirements for shooting on public lands because, for example, they result in shooting across a trail, or they do not have an unobstructed line of sight to an earthen backstop capable of stopping all projectiles and debris in a safe manner. Committee members agree that a significant increase in education and outreach, backed up by appropriate enforcement follow up, is needed to change these behaviors. Habitat rehabilitation in areas historically used for dispersed shooting where shooting is not discouraged might further encourage use of the enhanced sites or other more appropriate sites.

~~Finally, the Committee discussed that over time, there also may be need to further increase separation of user groups at Buffalo Rd. Some Committee members supported discussion of increasing separation of user groups by, for example, relocating the current user defined access trail to the Skyline Trail,~~

~~providing additional parking south and east of the current parking (as discussed in the draft Wenas Management Plan), and/or improving access and parking for the Skyline Trail trailhead, believing it to be the approach most likely to successfully provide for all users over time. Other Committee members expressed interest in enhancing a second (or alternative) site for shooting in the canyon east of Twin Canyons, which, because of topography, could have the added benefit of providing for additional shooting disciplines.~~

**15. WDFW should make limited-focused enhancements to the existing area of user-defined shooting at East Umtanum with a goal of improving safety and the predictability of firing direction for dispersed shooting users who avail themselves of that site.**

As with Buffalo Rd., the Committee had extensive deliberations about the East Umtanum site. This site has historically, and is currently, used by numbers of dispersed shooters and the Committee considered recommending it for enhancement for concentrated shooting. However, the Committee ultimately decided not to recommend larger-scale enhancements at the East Umtanum site for concentrated shooting and instead to focus enhancements in the north part of the Wenas Wildlife Area on the Durr Rd. site. This was due largely to concerns expressed by neighbors and other user groups at Committee meetings and during listening sessions. At the same time, the Committee recognizes that the East Umtanum site likely will continue to be used by dispersed shooters and therefore is recommending some very limited-focused enhancements in the form of signs, other markings, and potential enhancement of existing natural backstops to ensure all users are aware of one another and to increase the predictability and safety of shooting uses, but not designed to draw additional shooting use to the area or to encourage more concentrated shooting.

Some Committee members support additional enhancements at East Umtanum, including a defined and improved parking off-road parking area to prevent additional habitat disruption from driving off the road/shoulder, and a more formal firing line/backstop enhancement along with marked firing lines and/or benches to be more directive of safe shooting directions. A Committee Member notes that some shooters at East Umtanum shoot north or a little east of north, which is a safety concern, and drive off the road to shoot from their vehicles here shoot N or a little E of N, a concern for habitat degradation. Trails noted by some users as being of concern in this area appear to not be part of the official Wenas trail system and are user defined, rather than expressly authorized or maintained by DNR or WDFW. Further deliberation around the exact enhancements at East Umtanum that will best promote safety, limit habitat degradation, and reduce user conflicts should be included in phase 2 of the Committee process.

As with the Buffalo Rd. / power line crossing location, some Committee members expressed frustration that, in their view, particular user groups, in this case mountain biker and hiders, were trying to take away a long-used dispersed shooting location for their convenience rather than working with dispersed shooters to try to come up with a solution.

Also as with the Buffalo Rd. / power line crossing location, the Committee believes that a number of the areas historically (and currently) used by dispersed shooters at East Umtanum ~~may are~~ in fact not ~~be~~ in compliance with requirements for shooting on public lands because, for example, they do not have an unobstructed earthen backstop capable of stopping all projectiles and debris in a safe manner. A significant increase in education and outreach, backed up by appropriate enforcement follow up, is needed to ~~o~~ change these behaviors ensure dispersed shooting occurs in compliance with applicable requirements.

Similar to other concentrated shooting sites, movement of lead in the environment should be minimized and safe removal (harvesting) of lead, if possible, is encouraged.

#### D. Implementation

##### ***16. WDFW should take a phased approach to making improvements at the Wenas Wildlife Area with identifiable and measurable milestones.***

The Committee acknowledges that implementing these recommendations will take time and effort and that the resources needed, in particular to make ~~focused enhancements~~ ~~limited improvements~~ at sites improved for concentrated shooting, will take time – and possibly legislative action – to obtain. The Committee recommends beginning with actions that are quicker and less expensive to implement, followed by monitoring, and then moving towards more intensive management and investment if and where warranted.

Phase 1 is comprised of the majority of the recommendations on education and outreach, including development of new education and outreach materials, distribution of these materials, increased staff and volunteer presence on the Wildlife Area, and signs including signs at areas enhanced for concentrated shooting. It also includes revisions to the WDFW regulations on shooting on public lands to improve clarity and predictability, improving the WDFW website to make it easier to find rules and regulations, improved information collection, and signing and initial education and outreach actions at areas which will be enhanced for concentrated shooting (see Recommendations [4-81-5](#), [107](#), [118](#), [1512](#), and [1613](#)). Phase 1 should begin as soon as possible.

Phase 2 includes hiring an education and outreach liaison, increased enforcement emphasis and resources (including hiring an additional enforcement officer), and construction of ~~limited focused~~ on-the-ground ~~enhancements to improve improvements to enhance~~ sites for concentrated shooting. (See recommendations [96](#), [129-1411](#), and [174](#).)

Phase 1 and 2 are not intended to be strictly sequential, they can overlap. For example, if resources are available, priority on-the-ground improvements to sites enhanced for concentrated shooting might begin immediately and overlap with development and distribution of education and outreach materials. One of the intentions of the phased approach is to ensure that WDFW begins implementation of recommendations that can be accomplished quickly immediately and makes real progress, rather than waiting until resources enough for everything are available to start. Overall, the Committee anticipates the phased approach will take four or more years to complete, with the first phase being completed in the first year if not sooner.

[Attachment 4](#)~~Appendix A~~ lists the Committee's recommendations by phase. Detailed discussion of education and outreach recommendations begins on page 11, enforcement recommendations begin on page 16, and recommendations on improving a limited number of sites for concentrated shooting begin on page 18.

##### ***17. The WTS Advisory Committee should continue to meet to offer WDFW advice and support as recommendations are implemented. Meetings should be quarterly for the first year and semi-annually after that until the Department and the Committee determine that further support is not needed.***

Many members of the WTS Advisory Committee are willing to continue to be engaged as recommendations are implemented. Future committee roles could include: Support and assistance for

WDFW as it works with user groups, and local and state elected officials to implement recommendations, ongoing advice and perspectives on adaptive management as more information emerges over time, and direct assistance through volunteering. The Committee acknowledges that some members may not be willing or able to commit to continuing involvement; in those cases, members should be replaced by a representative of a similar constituency/user group.

#### IV. Conclusion

Committee members dedicated significant time and effort to the long-standing question of how to address dispersed shooting in the Wenas Wildlife Area and reached consensus on most topics. This includes consensus recommendations on —much needed education and outreach for all user groups and calling for increased education and outreach activities and resources; the role of enforcement and calling for increased enforcement resources; focused enhancements to increase safety at four sites that historically and currently have been locations of concentrated shooting activities; and a phased approach to implementation with continued engagement with the Advisory Committee going forward. Even for the few topics on which the Committee did not reach consensus, there were many areas of common ground even around topics on which the Committee did not reach agreement. It is possible that the Committee could reach agreement on these topics with additional time for deliberations. Most Committee members ~~They reached consensus on the majority of their recommendations and are~~ interested in continuing to work working with WDFW to see their consensus recommendations implemented fully and quickly and to continue deliberations on remaining topics.



**Attachment 1: List of Committee Members**

*John Baranowski*

*Lee Davis*

*Bill Essman*

*Tim Funkhouser*

*Bret Hollar*

*Keely Hopkins*

*Walt Hyde*

*Brian Lund*

*Jim Lydigsen*

*Debby McCandless*

*Steve Miller*

*Clay Myers*

*Craig O'Brine*

*Norm Peck*

*Nick Perry*

*Mark Pidgeon*

*Scott Robertson*

*Robert Schafer*

*Tanya Stanley*

*Rachel Voss*

*Two Committee members, Nick Perry and Debby McCandless, chose not to complete the process and left after the third and sixth meeting, respectively.*

## ***Attachment 2: Committee deliberations and different perspectives on principles to govern future decisions about dispersed shooting.***

*The Committee deliberated on the types of principles that should govern future decisions about dispersed shooting. Although there were many areas of common ground in these discussions, ultimately the Committee was not able to reach agreement on principles due largely to differences in perspective on the meaning of WDFW's mission for management of shooting and other forms of recreation and the priority of shooting relative to other forms of recreation. The lack of agreement on how to address shooting in the vicinity of the Buffalo Rd. / Power Line crossing, and the support by some Committee members for closure of a small area to dispersed shooting in that vicinity, also made agreement on principles difficult, given that other Committee members hold a strong value for preserving all dispersed shooting that can be carried out in compliance with applicable rules and regulations.*

*The final draft of principals and supportive text reviewed by Committee members was:*

*"WDFW should apply the following principles to future decisions about dispersed shooting: (1) the purpose of the Wildlife Area is for habitat/wildlife conservation and compatible recreation – both need to be supported by WDFW; (2) there should be opportunities for all types of recreational uses - one use should not be prioritized over others, all should be allowed; (3) improvements to education and outreach are needed for all users so people better understand the rules and expectations for behavior and know what to expect; (4) dispersed shooting in compliance with applicable rules and regulations is currently allowed and should remain so; however, improvements to management of recreation, including dispersed shooting, are needed."*

*"The Committee offers these principles to set the context for its other recommendations, and to set the tone for implementation. The Committee drew these principles from the content of its deliberations and by looking across their recommendations, and believes they represent a valuable compass for future management of dispersed shooting in the context of other recreation and uses of the Wildlife Area. In addition, the Committee has offered to remain involved in future decisions about implementing the recommendations in this report, and adaptive management of dispersed shooting on the Wenas (see Recommendation 3), and can assist with implementing these principles as future decisions arise."*

*"Note that all Committee members agreed with these principles, including the Committee Members who support closure of a small area at Buffalo Rd to dispersed shooting. These Committee members are not in opposition to dispersed shooting generally, even as they believe that, at Buffalo Rd., some additional limits are needed (see Recommendation 17 for a fuller discussion of the Committee's recommendation and different perspectives on Buffalo Rd.)."*

*Committee members offered the following comments on this final draft:*

- [Suggested alternative language] "Dispersed shooting in compliance with applicable rules and regulations is currently allowed and should remain so throughout the Wildlife Area; however, improvements to the management of dispersed shooting are needed. WDFW should consider the following principals in their management of the Wenas Wildlife Area: 1) the purpose of the Wildlife Area is for recreation and for habitat/wildlife- both need to be supported by WDFW; 2) the WDFW should support and facilitate all types of recreational uses; 3) improvements to education and outreach are needed for all users so people can better understand the rules and expectations for behavior and know what to expect". Take out word "compatible". Statement*

*on dispersed shooting needs to be clear, not listed last and not just as a "consideration" for WDFW. There may be a priority of user groups given funding for that area's management.*

- *Dispersed shooting needs to stop before someone gets hurt or worse*
- *Statement #2; at the end of the sentence "all should be allowed", ADD; all should be allowed and accommodated as recommended by the Committee while recognizing and understanding the full scope and standard needs of each form of recreation. Statement #4; Delete; the unnecessary singling out of dispersed shooting as the bad guy. ADD; and should remain so, however improvements to management of ALL forms of recreation are needed. Throughout the text All forms of recreation is what is being discussed. Singling out dispersed shooting at the end is unnecessarily discriminatory. The intent of the Committee is to create a level playing field for All forms of recreation not continue to perpetuate an adversarial relationship between them.*
- *It is important to realize that most of this land was purchased with Pittman & Robertson money (the excise tax from the sale of firearms, ammunition & archery tackle-hunters & target shooters). Other user groups have not contributed anything. It is illegal for individuals to build trails on state lands, yet it appears that there are many. Agencies would have to do a cultural resources study & SEPA before they could construct trails.*
- *I don't agree with this sentence: WDFW should apply the following principles to future decisions about dispersed shooting. Our committee is suppose to find safer uses for ALL recreation users. Sentence should state: WDFW should apply the following principles to future decisions about recreational uses on Wenas Wildlife Area.*
- *I believe the statutory mandate to maintain and improve wildlife populations and habitat (not exact wording) should receive more emphasis, and that other uses/recreational activities should be secondary. That said, I can live with this wording as an improvement over prior language, especially that wildlife/habitat is listed first.*
- *(2) there should be opportunities for all types of recreational uses that are compatible with the WDFW's primary mission- one use should not be prioritized over others, all should be allowed; I just want to emphasize that its not a given right to just do anything out there; activities must be in concordance with the primary use of the land, or take it elsewhere...thus a caveat to the "all should be allowed"*
- *We say "one use should not be prioritized over others," but Mike Livingston says according to RCW 77.04.012 and WAC 220-500-010 that hunting and fishing are the RCW mandated recreation priorities for the department. It sounds like all other recreations come secondary to these and should be treated equally with each other. Something like "while hunting and fishing are the RCW mandated recreations for WDFW all other forms while secondary to these should be treated equally and one use should not be prioritized over others."*
- *The purpose of the Wildlife Area is for habitat/wildlife conservation and compatible recreation. Conservation includes management of human use for public benefit and sustainable social and economic needs. Target shooting is compatible with other conservation goals when in compliance with current law and WDFW rules for use of the Wildlife Area. The Department has a responsibility to provide direction and support for recreational activities on the Wildlife Area including dispersed and more concentrated target shooting. Improvements to education and outreach are needed for all users so people better understand the rules and expectations for*

*behavior. Applying the recommendations included in this report will improve the recreational objectives of the many people who visit the Wenas Wildlife Area.*

- This area was paid for by hunters' and shooters' dollars, Pittman-Roberson dollars, the primary focus of this area has to be towards hunters and shooters. This language sounds like shooters are red-headed step-children and we are begrudgingly being allowed to participate. Hunters and shooters need to be first in line. It will depend on the final recommendation wording.*
- The last sentence in the above statement; some additional limits "are" needed, etc. DELETE; THE WORD "ARE" ADD; the word "may" be needed etc.. As written the use of the word "are" implies an imperative which exists only as an opinion in the mind of a minority of the Committee. Use of the word is inappropriate. It suggests a decision has been made by the Committee or by WDFW neither of which is true. No decision should or can be made until the necessity for limits has been proven. A hypothetical is not evidence of reality. Determining the necessity for additional limits should be identified only following implementation of the Committee's recommendations, i.e., public education, improved signage and mapping, followed by evaluation of the effectiveness of each, over a reasonable period of time such as 2 years.*
- Don't like any statements referencing the closure of shooting anywhere on Wenas Wildlife Area.*
- I selected 2.) because of the opinion expressed in the comment above. (Note this refers to the commenters earlier comment; not to the comment above this block.)*
- The last paragraph concerns a small area in one location. (Buffalo Road area) I think it is appropriately addressed in Recommendation 17. I suggest that the last paragraph be deleted from supportive text for Recommendation One because it is a possible exception from Recommendation One and it remains undecided if it will apply to any location.*
- Dispersed shooting needs to be limited to protect homeowners.*

Although agreement on principles was not reached during these deliberations, given the many areas of common ground that appear to exist, it is possible that the Committee could reach agreement on principles with additional time and discussion. This could be taken up again during the next phase of the Committee process.

### Attachment 3: Conceptual Drawings for Enhanced Shooting Locations

Figure 1: General Conceptual Diagram for an Enhanced Concentrated Shooting Site

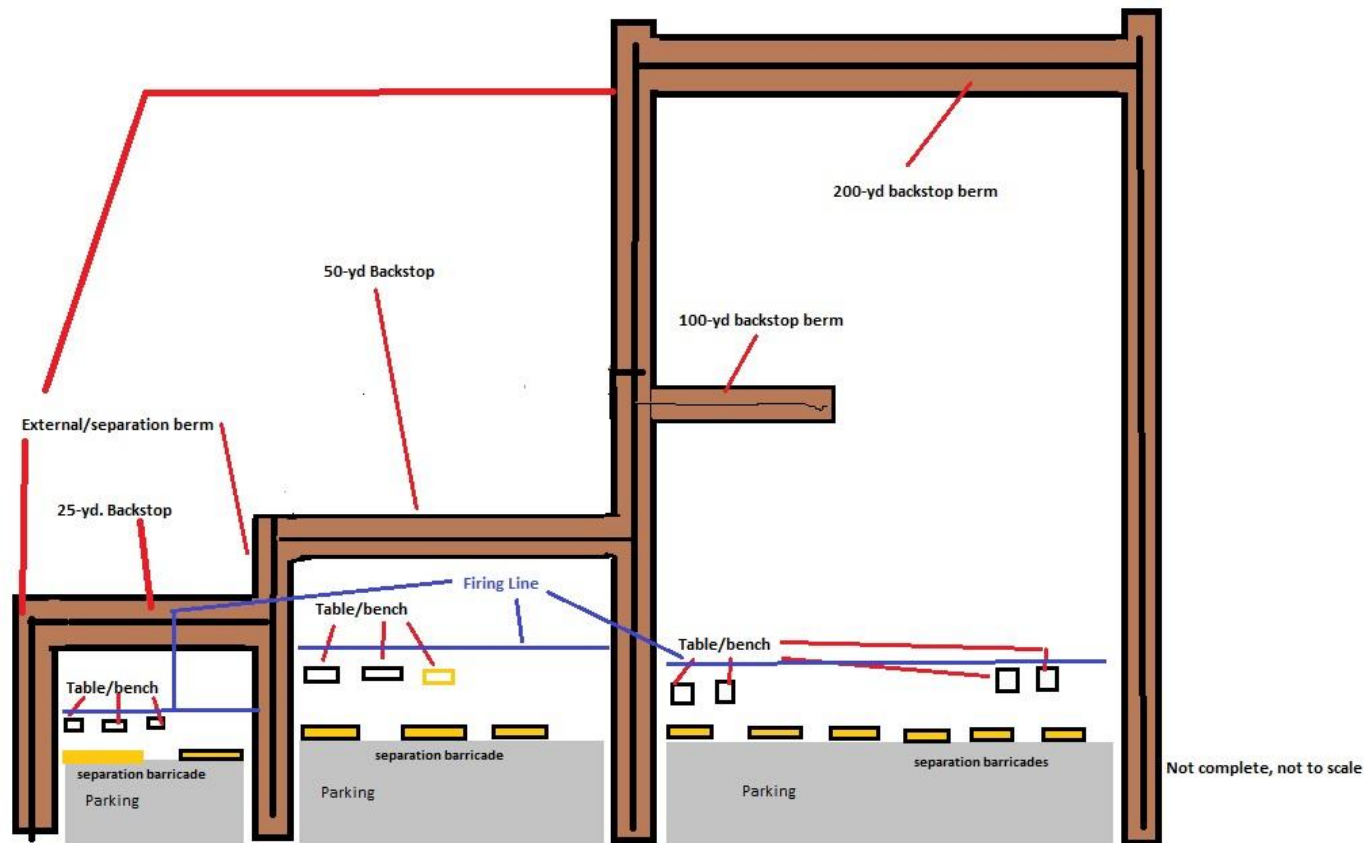


Figure 2: North Durr Road Conceptual Map

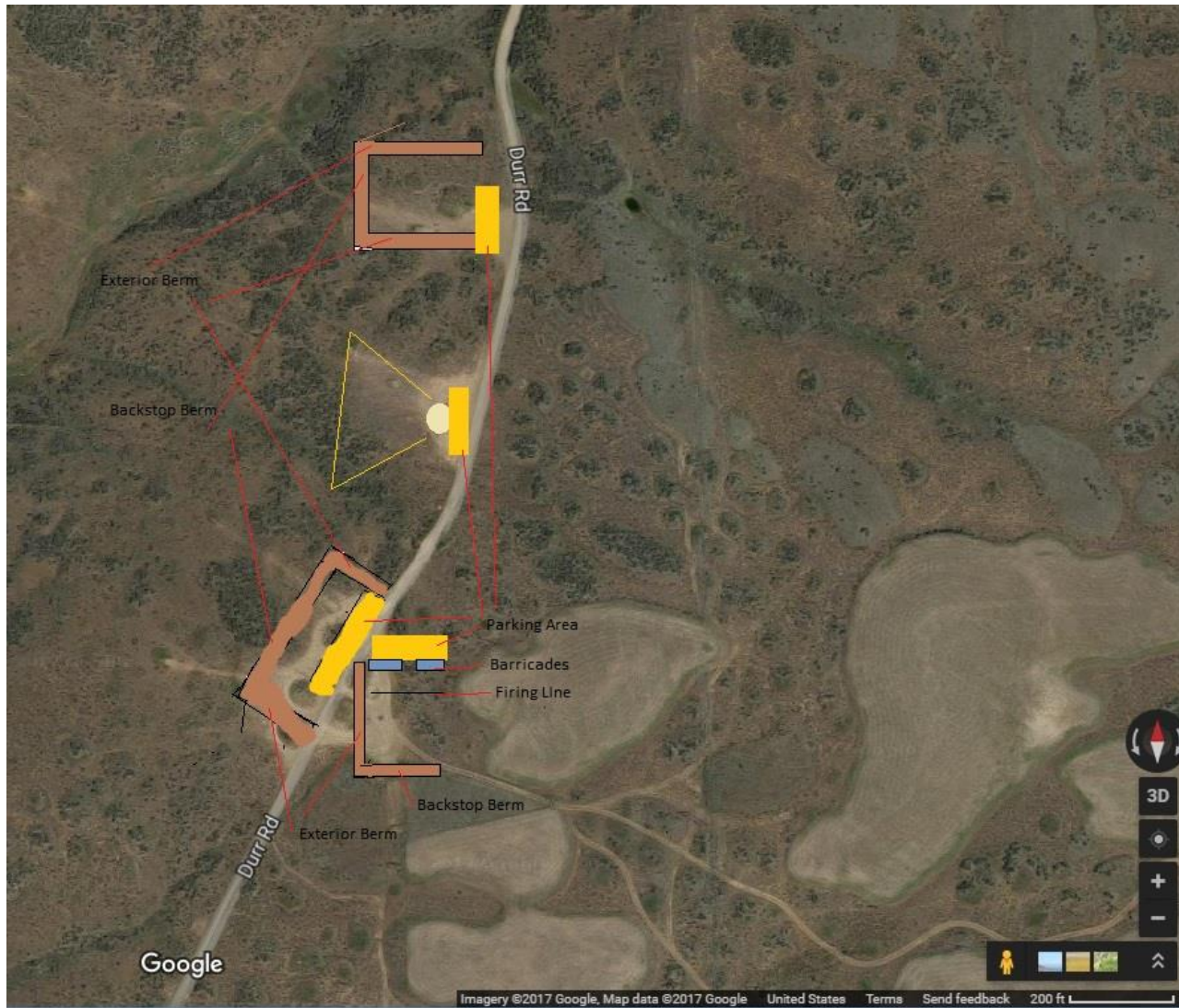


Figure 3: Sheep Company Rd. Conceptual Map

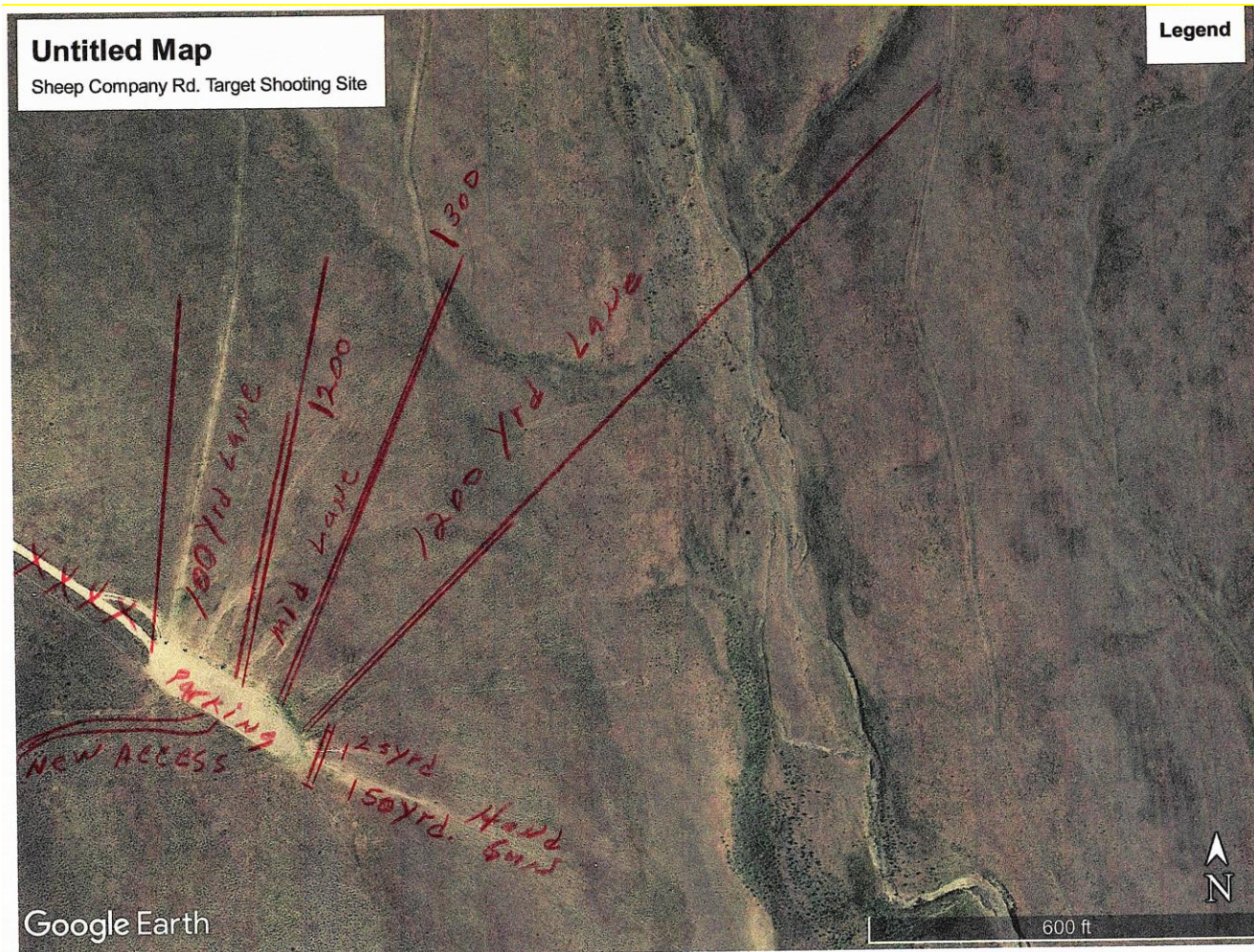
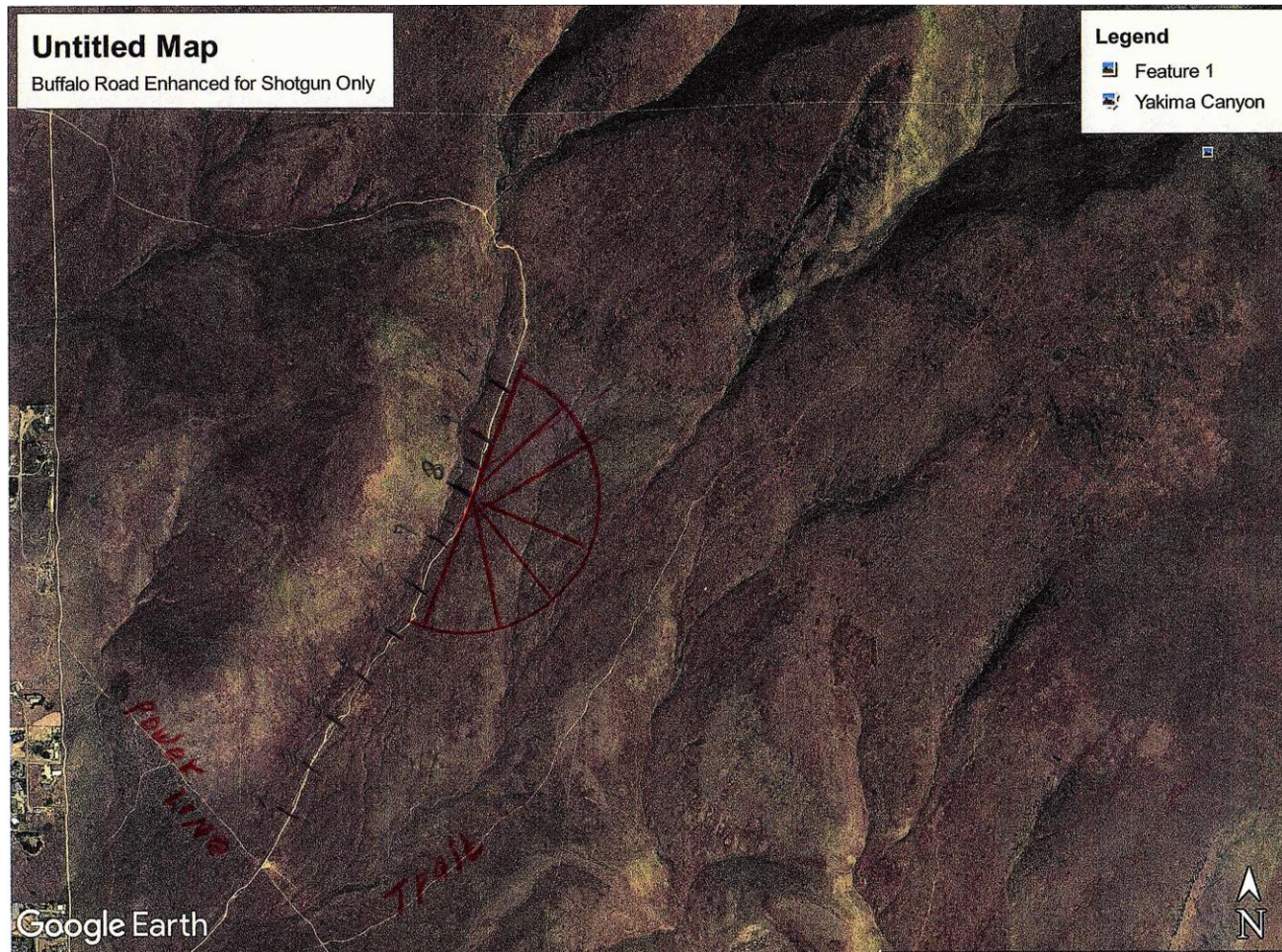


Figure 4: Buffalo Rd. Conceptual Map





**Attachment 4: Committee Recommendations by Phase**

Draft Recommendation	Phase I	Phase II
1. WDFW should develop and install clearer and increased signage at the Wildlife Area including at all access points and at areas enhanced for concentrated shooting and all trail heads.	X	
2. WDFW, working with user groups such as those represented on the WTS Advisory Committee, should develop simple and clear educational materials for all users of the Wenas Wildlife Area, with a particular emphasis on clear materials addressing regulations, best practices, and codes of public conduct for shooting and recreation on public lands.	X	
3. WDFW should develop maps showing access points, primary roads and trails, areas enhanced for concentrated shooting, and any other designed use areas (e.g., dog training areas).	X	
4. WDFW, working with groups such as those represented on the WTS Advisory Committee, should ensure broad distribution of educational materials and maps via multiple distribution methods.	X	
5. WDFW should increase Department staff presence at the Wildlife Area especially at high-use times to offer information to users.	X	
6. To further increase Department staff presence at the Wenas Wildlife Area and provide for ongoing education and outreach, WDFW should create and fill the position of Outreach Liaison for WDFW Region 3.		X
7. WDFW, in coordination with local groups, should support and expand the use of volunteers at the Wenas Wildlife Area to help distribute information, continue cleanups, and assist with other activities in support of use of the wildlife area as appropriate.	X	
8. WDFW should revise its regulations on shooting on public lands (WAC 220-500-140 and WAC 220-500-220) to match DNR's regulations on shooting on public lands (WAC 332-52-145) so the regulations are consistent.	X	
9. WDFW should enhance coordination with local law enforcement, non-enforcement WDFW programs, and volunteer groups (as appropriate) to focus their available patrols and on-site presence for the Wenas at sites enhanced for concentrated shooting and at trail heads during anticipated high-use periods, and should create and fill at least one additional enforcement officer position for Region 3.		X
10. WDFW should collaborate with the Eyes in the Woods organization and offer one or more Crime Observation and Reporting Training (CORT) courses and related support for the Wenas Wildlife Area, preferably with an initial CORT course in early spring 2018.		X
11. WDFW should improve existing tools and/or develop new tools to make it simpler for people to document and report illegal behavior.		X
12. WDFW should improve its enforcement records management and work towards a records management system capable of producing analysis-ready reports specific to public safety.		X
13. WDFW should immediately identify existing concentrated shooting sites at Sheep Company Rd. and Durr Rd as locations to be enhanced for concentrated shooting, and should implement initial enhancements – particularly around education and outreach – at these sites as soon as possible and other enhancements as quickly as funding can be secured. Physical enhancements should be focused and designed to increase the likelihood of safe and predictable behavior and encourage compliance with requirements and expectations.	X	
14. WDFW should identify and enhance an area for concentrated shooting of shotgun at Buffalo Rd. approximately .8 miles north of the intersection of the power line and the green dot road. The orientation of the area should be discussed with the Advisory Group during phase II of this effort. As with		X

Sheep Company and Durr Rd., enhancements should be focused and designed to increase the likelihood of safe and predictable behavior and encourage compliance with requirements and expectations.		
15. WDFW should make focused enhancements to the existing area of user-defined shooting at East Umtanum with a goal of improving safety and the predictability of firing direction for dispersed shooting users who avail themselves of that site.		
16. WDFW should take a phased approach to making improvements at the Wenas Wildlife Area with identifiable and measurable milestones.	X	X
17. The WTS Advisory Committee should continue to meet to offer WDFW advice and support as recommendations are implemented. Meetings should be quarterly for the first year and semi-annually after that until the Department and the Committee determine that further support is not needed.	X	X

[Wenas Advisory Committee Meeting 8 – Attachment 3 \(of 3\)](#)

