

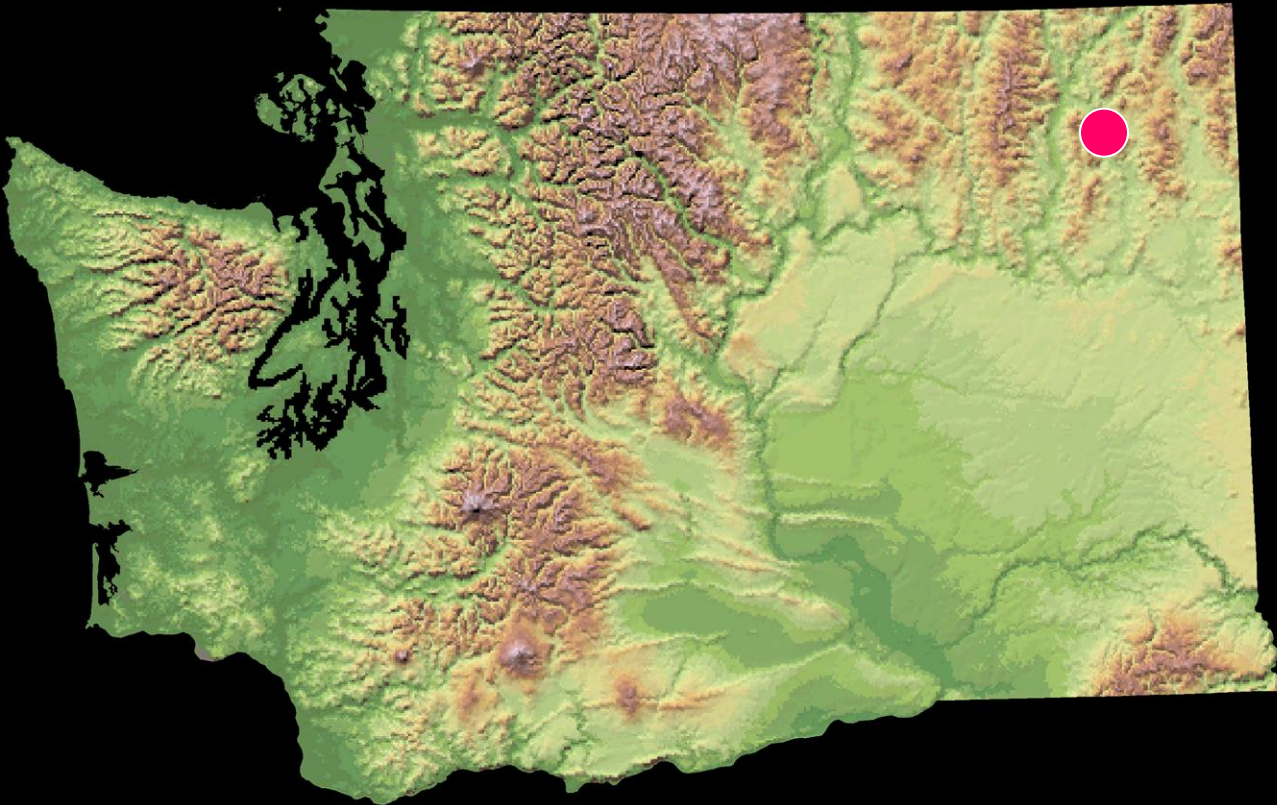
A large school of fish, likely salmon, swimming in clear, shallow water over a sandy bottom. The fish are densely packed and moving in various directions. The water is bright and clear, and the sand is visible at the bottom. The overall scene is dynamic and natural.

Land Transactions

January 11 & 12, 2013

Colville Fish Hatchery Stevens County

Project Location



Colville Fish Hatchery Stevens County



19.4 acres



Colville Fish Hatchery Stevens County



Colville Fish Hatchery Stevens County

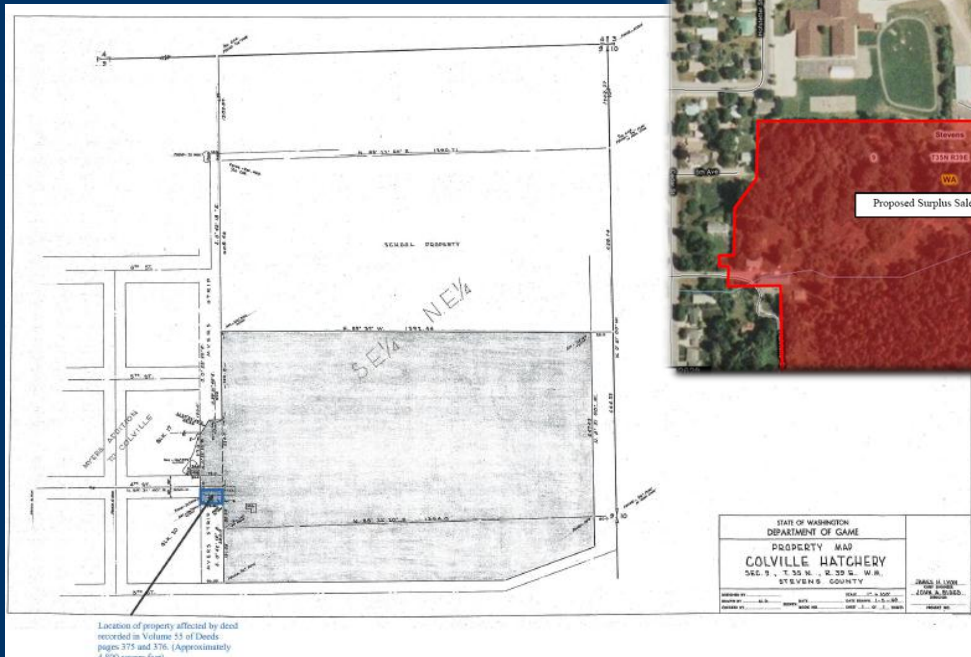


- Creates a fish rearing vocational education program with the local high school
- Potential to provide fish for Department use stocking area lakes



Colville Fish Hatchery Stevens County

State/Local Government partnership



BEFORE THE BOARD OF STEVENS COUNTY COMMISSIONERS

IN THE MATTER OF A PROPOSAL TO
PURCHASE THE COLVILLE HATCHERY

Resolution No. 72-2012

RESOLUTION OF INTEREST IN ACQUIRING
THE COLVILLE HATCHERY

Elements of the Sale and Real Estate Contract for the Colville Hatchery:

The Department of Fish and Wildlife (WDFW) has concluded that the Colville Hatchery is a surplus property and is proposing its sale to Stevens County.

The 19.4 acre hatchery property was acquired in 1933 from Stevens County pursuant to Section 35-A of Initiative Measure No. 52 which created the Washington State Game Department. Since that time the hatchery has been used for nearly 80 years as a fish rearing facility. The hatchery property includes a hatchery building, an employee residence, a garage and an out-building. A small portion of the property upon which the hatchery building is located has a reversionary deed requiring that the parcel be used for hatchery purposes.

The purchase price of the property will be the reviewed, appraised value of \$150,000.

The purchase will be made through a real estate contract between Stevens County and the Washington Department of Fish and Wildlife.

The length of the term of the contract is to be negotiated between the parties but will likely be 15 or 20 years; bearing interest at current market rate.

The Department of Fish and Wildlife anticipates that the purchase by Stevens County will be a cash transaction. The real estate contract will, however, allow WDFW to accept non-cash compensation as partial payment consistent with RCW 39.33.10 (e.g. WDFW may accept fish produced at the hatchery for local lake stocking in-lieu of cash).

Elements of a Memorandum of Agreement:

WDFW will work with Stevens County and any partners that they delegate to provide fish eggs or fish fry for production at the county owned facility.

WDFW will provide technical assistance and respond to general fish culture questions and concerns about fish production in a timely manner.

WDFW will provide technical assistance in response to fish health and disease incidences.

Passed by the Board of Stevens County Commissioners meeting in regular session at Colville, Washington, by the following vote, then signed by its membership and attested to by its Clerk in authorization of such passage the 24th day of December, 2012.

3 YEA; 0 NAY; 0 ABSTAIN; and 0 ABSENT

BOARD OF COUNTY COMMISSIONERS OF
STEVENS COUNTY, WASHINGTON

Chairman Malcolm Friedman

Commissioner Don Dashiell

ATTEST:

Polly Coleman
Polly Coleman
Clerk of the Board

---telephonically approved---
Commissioner Larry Guenther

A large school of fish, possibly salmon, swimming in clear, shallow water over a sandy bottom. The fish are densely packed and moving in various directions. The water is bright and clear, and the sand is visible at the bottom.

Land Transactions

Questions?

Public Comments?