

# **Agenda Item 13**

**2012 – 2014 Deer General Seasons  
and**

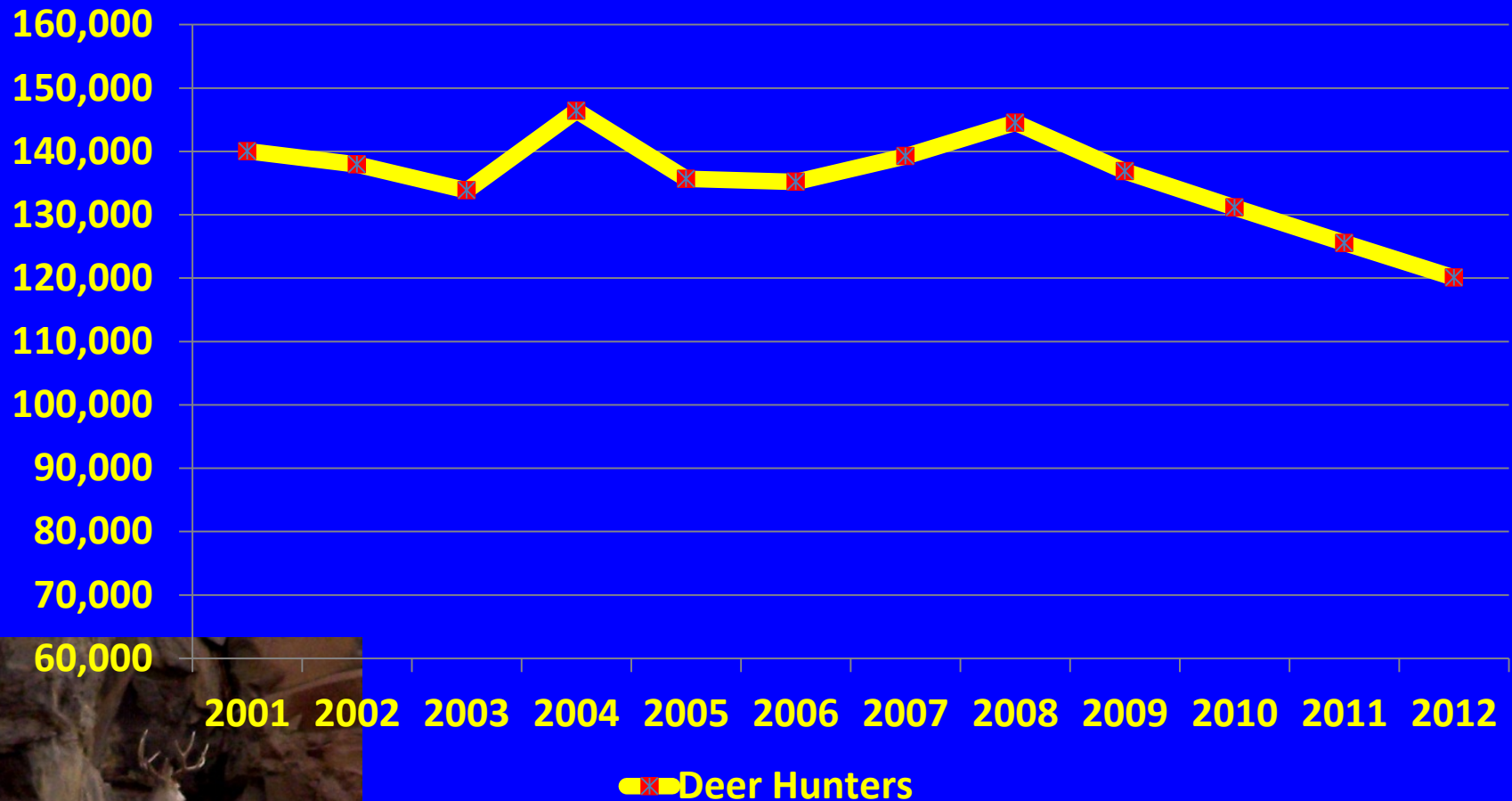
**2013 Deer Special Permits**

**WAC 232-28-357**

**WAC 232-28-359**

**Rule Adoption**

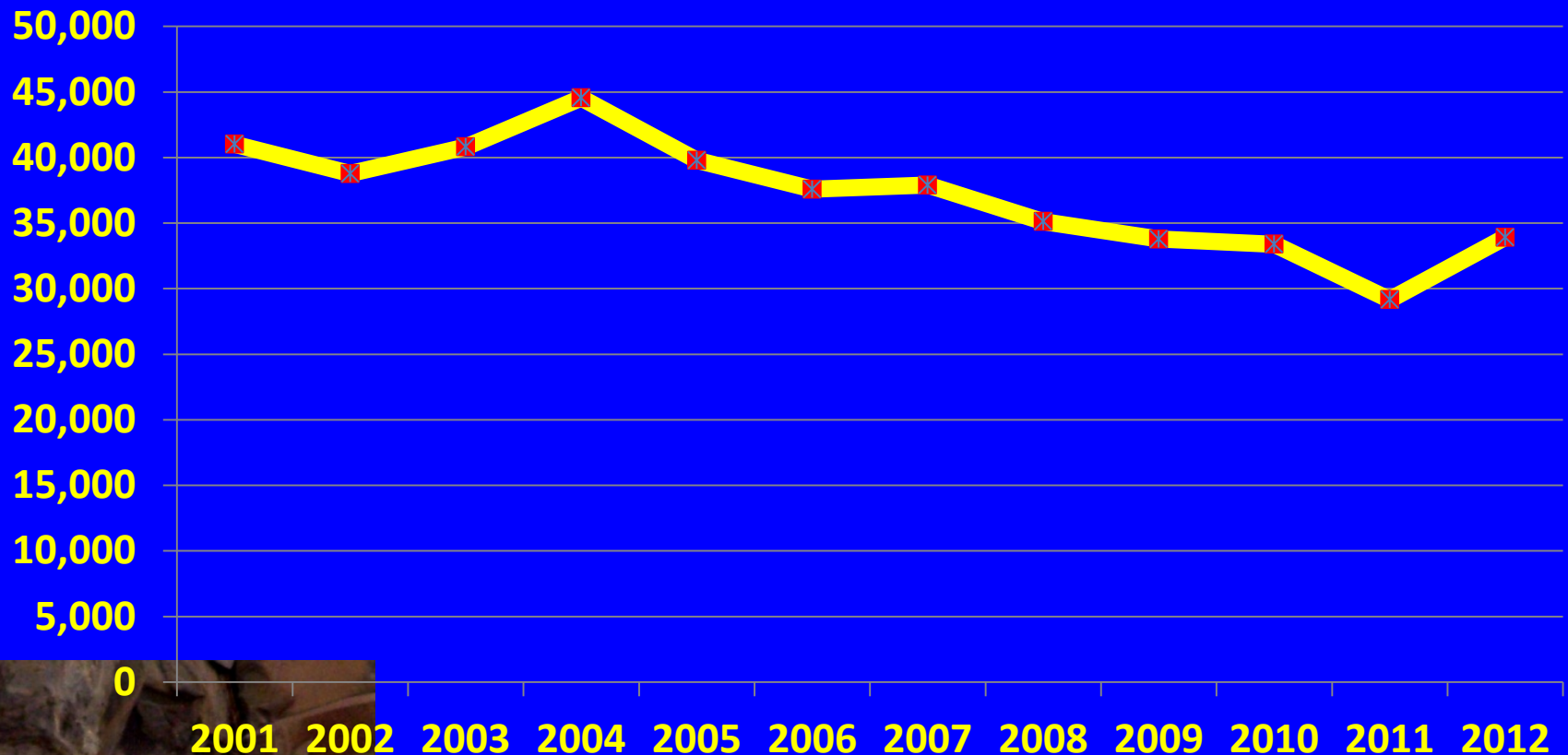
# Statewide Deer Hunter Estimates



4/19/2013

Washington Dept. of Fish & Wildlife  
Information subject to change and  
amendment over time.

# Statewide Deer Harvest Estimates



Total Deer Harvest



4/19/2013

Washington Dept. of Fish & Wildlife  
Information subject to change and  
amendment over time.

# Deer Season Recommendations

- **Status Quo for Most Seasons**
- **Initiate Seasons in “New” GMUs That Were Formerly Deer Area Islands**
- **Adjust  $\uparrow\downarrow$  Special Permits via Special Permit Allocation Formula**
- **Adjust Antlerless Special Permits to Address Agricultural Damage Issues**
- **Adjust Special Permits in Response to Population Numbers**

# Floor Changes- Deer

- **Page 16: For Deer Special Permits, under the Quality category, Kitsap, Archery, change the dates from Nov. 1-24 to Nov. 1-13. This change avoids an overlap with the modern firearm late buck general season.**
- **Page 16: For Deer Special Permits, under the Quality category, Skokomish, Archery, change the dates from Nov. 1-24 to Nov. 1-13. This change avoids an overlap with the modern firearm late buck general season.**
- **Page 16: For Deer Special Permits, under the Quality category, Olympic, Muzzleloader, change the dates from Nov. 1-24 to Nov. 1-13. This change avoids an overlap with the modern firearm late buck general season**



# Questions