

**Lands 20/20 Overview
and
Proposed Acquisition Grant
Submittals For 2015**

**Cynthia Wilkerson and Lauri Vigue
Wildlife Program**

Lands 20/20 Presentation

- WDFW Mission/Strategic Plan
- Conservation tools
- Land acquisition priorities
- Acquisition steps
- Acquisition funding sources
- 2015 Project Proposals
- Public comment summary
- Next steps

Preserve, protect and perpetuate fish, wildlife and ecosystems while providing sustainable and wildlife recreational and commercial opportunities

Goal #1: Conserve and protect native fish and wildlife.

Goal #2: Provide sustainable fishing, hunting, and other wildlife- related recreational and commercial experiences.

Goal #3: Promote a healthy economy, protect community character, maintain an overall high quality of life, and deliver high-quality customer service.

Goal #4: Build an effective and efficient organization by supporting our workforce, improving business processes, and investing in technology.

WDFW Conservation Tools

Regulatory

Species Augmentation

Land Use Planning Assistance

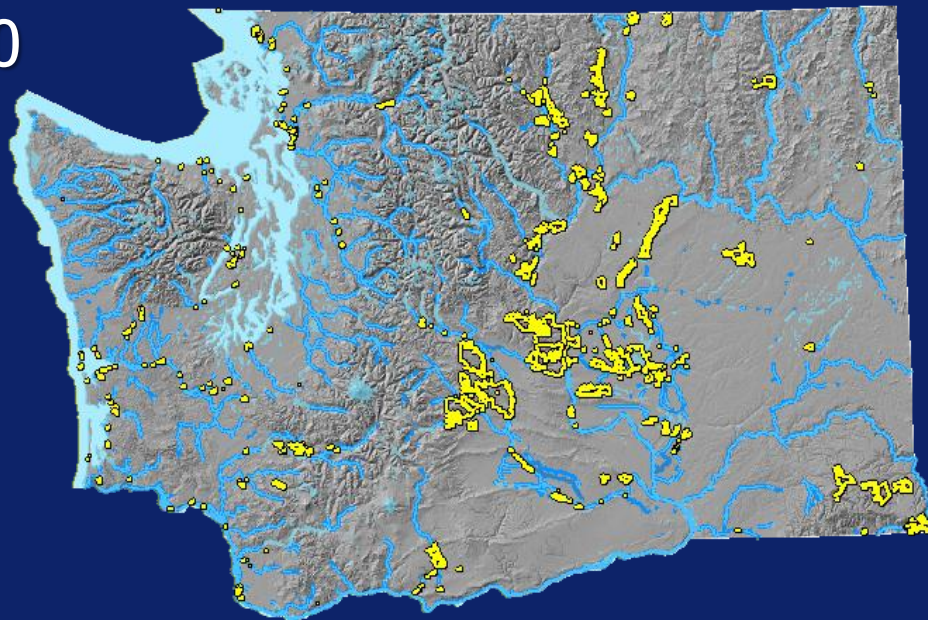
Private Lands Partnerships

Real Property Management and Transactions



WDFW Lands

- ▣ Wildlife Areas = ~1,000,000 acres
 - Open 365 days/ year
 - Four million visitors/ year
- ▣ Boat launch/Water Access Sites = 700



WDFW Land Acquisition Principles Conservation Initiative

- ❑ Optimize, pursue, and use partnerships
- ❑ Evaluate whether acquisition is the best conservation alternative
- ❑ Pursue lands that provide long-term opportunities
- ❑ Pursue lands that will provide long-term ecological value
- ❑ Place a higher value on acquisitions that create blocks of ownership
- ❑ Pursue easements or other non-fee title options on smaller tracts
- ❑ Prioritize lands that are ecologically or socially important

WDFW Land Acquisition Priorities

Aquatic Habitats



WDFW Land Acquisition Priorities

Critical Habitat for Specific Species



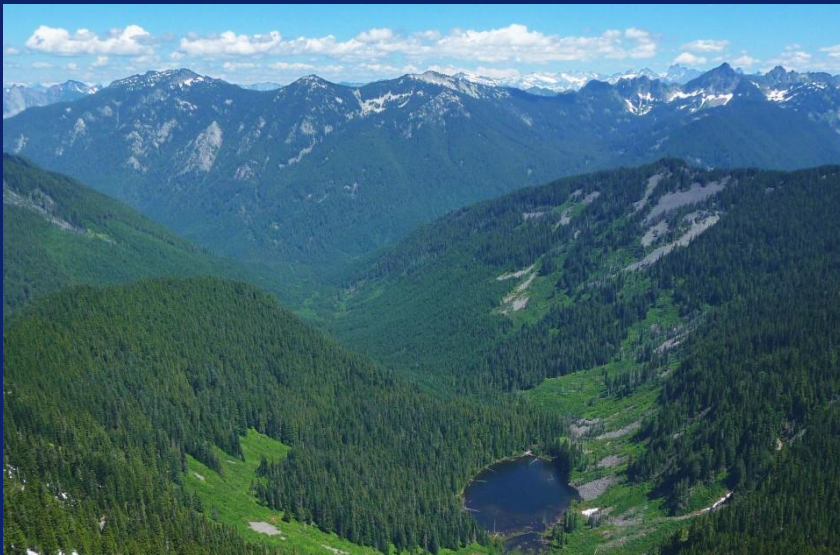
WDFW Land Acquisition Priorities

Terrestrial Habitats



WDFW Land Acquisition Priorities

Statewide Priority Landscapes



Acquisition Steps

Scoping and Need

Evaluation and Prioritization

Acquisition Implementation

Integrating Ownership



STATE OF WASHINGTON March 2011
Lynx Recovery Plan

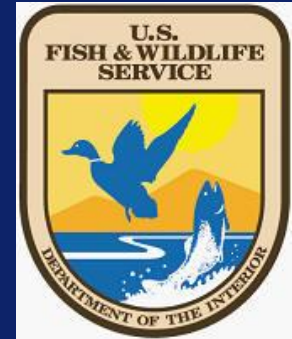
Washington's
Washington Department of Fish and Wildlife

Game Management Plan
July 2015 - June 2021

Washington Department of FISH and WILDLIFE

Acquisition Steps

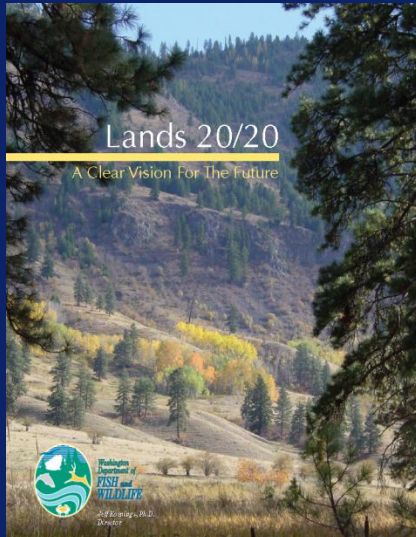
Scoping
and Need



Evaluation and
Prioritization



Acquisition
Implementation



Integrating
Ownership

Acquisition Steps

Scoping and Need

Evaluation and Prioritization

Acquisition Implementation

Integrating Ownership



Acquisition Steps

Scoping and Need

Evaluation and Prioritization

Acquisition Implementation

Integrating Ownership



Major Acquisition Funding Sources

- ▣ WA State Recreation and Conservation Office (RCO)
 - Aquatic Lands Enhancement Account (ALEA), Washington Wildlife and Recreation Program (WWRP), Salmon Recovery Funding Board (SRFB)



- ▣ USFWS
 - Cooperative Endangered Species Conservation Fund "Section 6"
 - National Coastal Wetland Conservation Act
 - North American Wetland Conservation Act



Strengthen common, shared values

Open Spaces



Protection of Water



Working Lands



Rural Economy



Outdoor Recreation



Conservation Partners

Recreation & Conservation Funding Board
Trust for Public Lands
Local Land Trusts
Conservation Northwest
The Nature Conservancy
Mule Deer Foundation
Duke Foundation
US Fish & Wildlife Service
US Forest Service
DNR
State Parks
BLM
Private landowners.



2015 WDFW Land Acquisition Project Proposals



0 10 20 30 40 Miles

Copyright: © 2013 ESRI, i-cubed, GeoEye

Lands 20/20 Overview

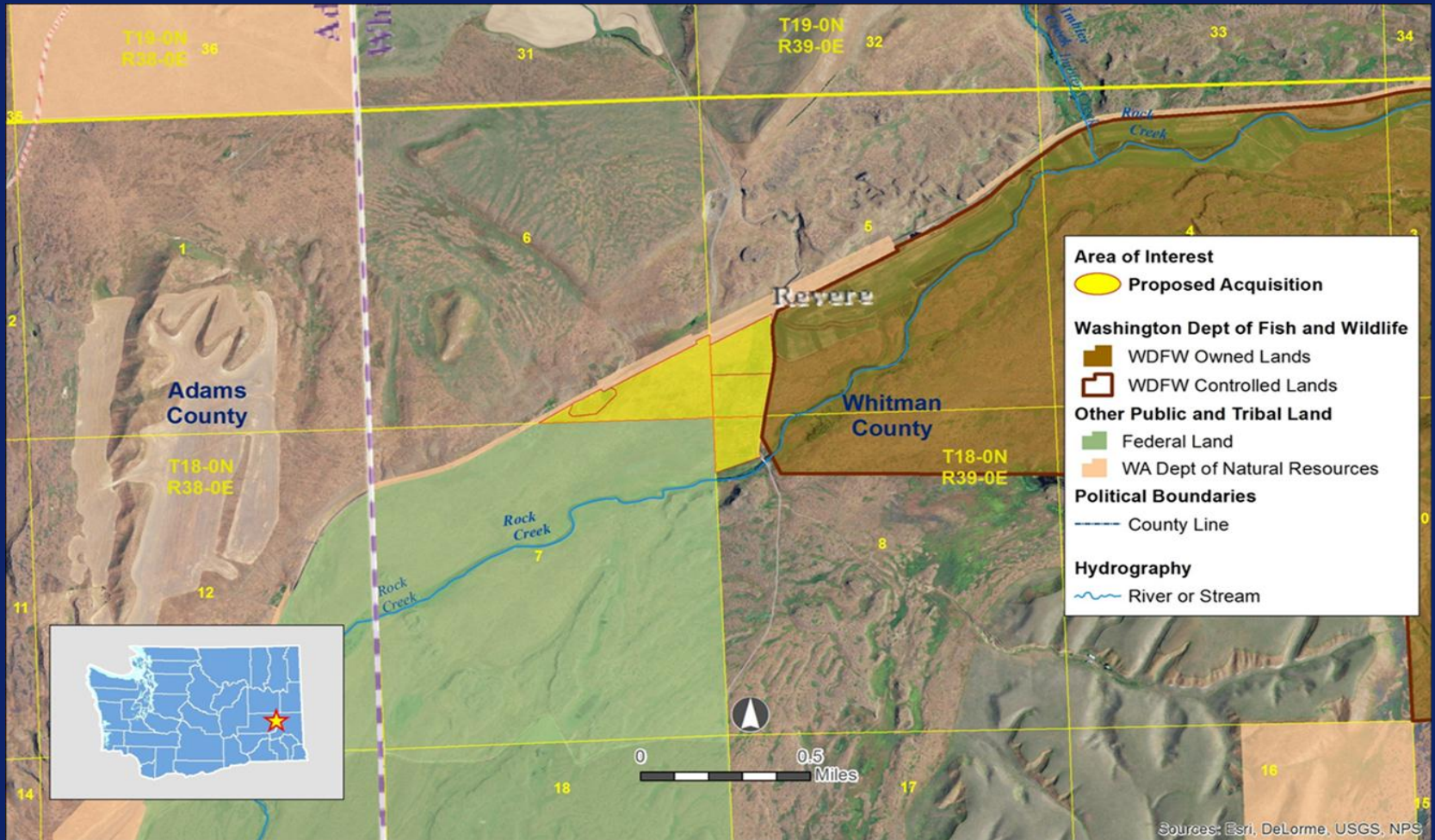
Region 1

- ▣ Revere Addition

Region 4

- ▣ Lower Nooksack River Project

Revere Addition



Region 1 Proposed Project

Revere Addition

Acres: 94

Funding Request: Donation

Acquisition Type: Fee Simple



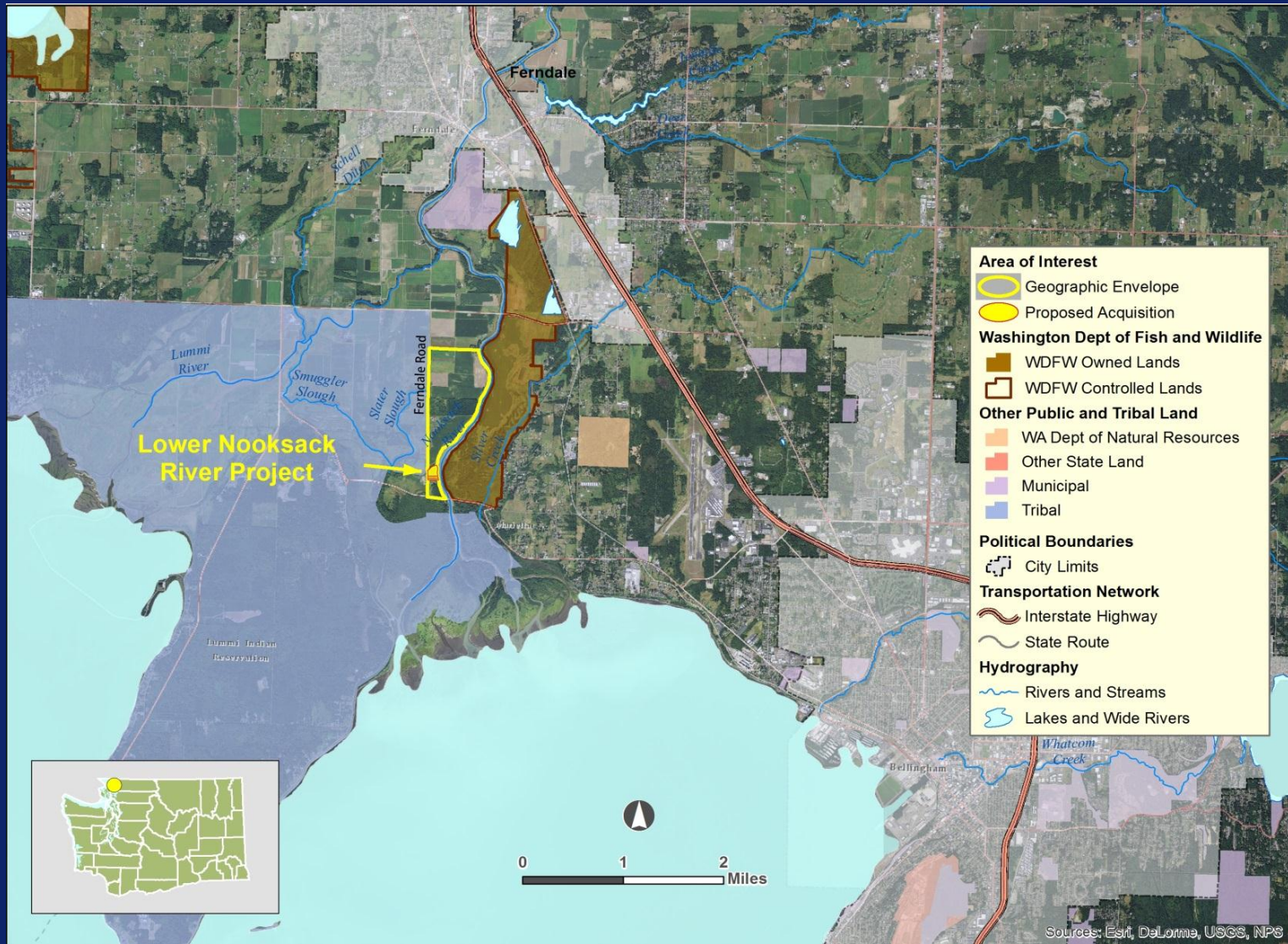
Region 1 Proposed Project

Revere Addition

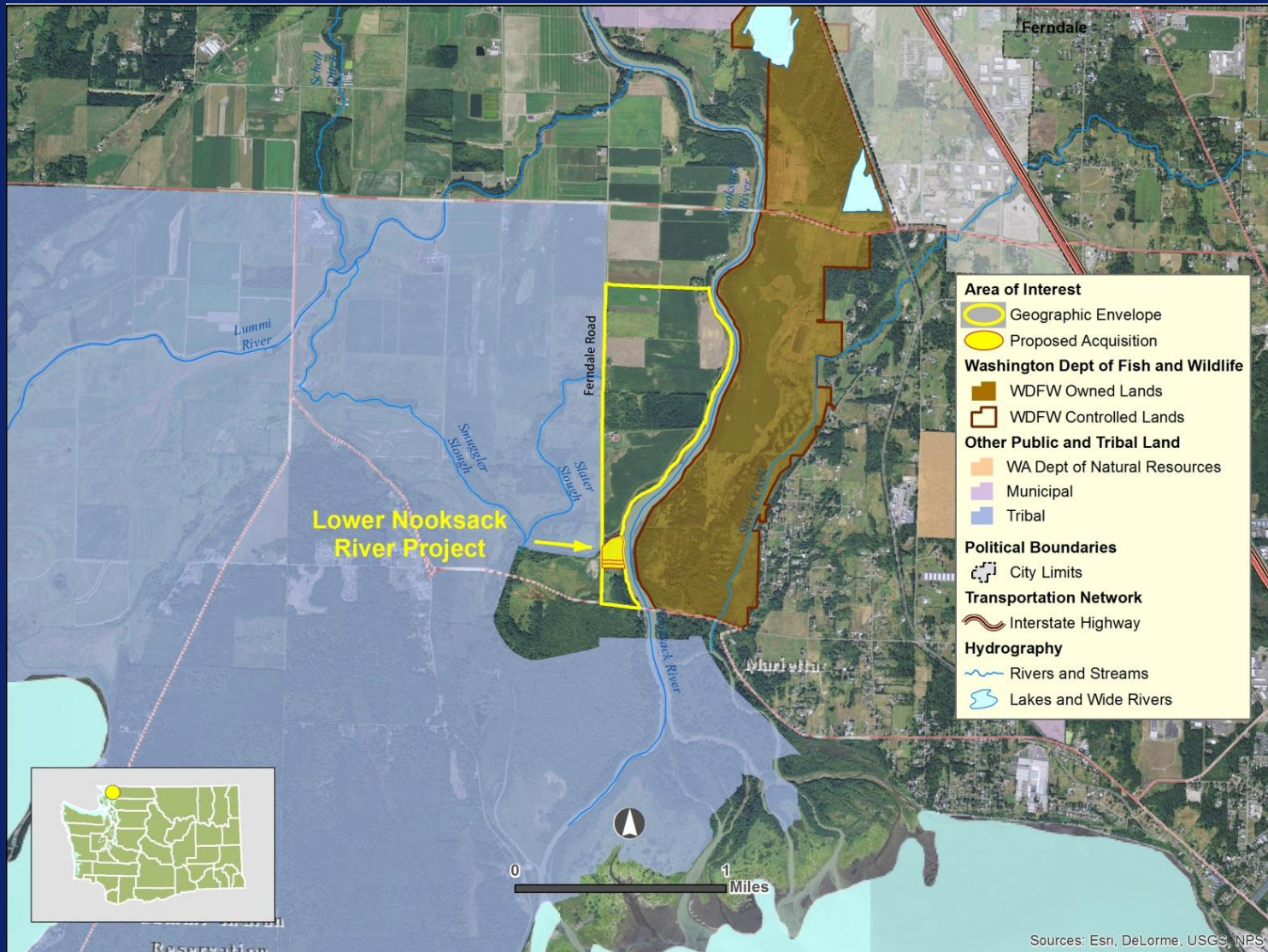
- ▣ Located between Revere Wildlife Area and BLM lands
- ▣ 10 year commitment for habitat restoration
- ▣ Rainbow trout, sharp-tail grouse, upland birds
- ▣ Connectivity corridor for mule deer
- ▣ Palouse prairie grassland/shrub-steppe, channel scablands
- ▣ Hunting, wildlife viewing and hiking

Local support: Pheasants Forever, Mule Deer Foundation, Inland Northwest Wildlife Council, Spokane Bird Dog Association

Lower Nooksack River Project



Lower Nooksack River Project



Region 4 Proposed Project

Lower Nooksack River Project

Acres: 10

Funding Source: Funded by USFWS Coastal Wetland

Acquisition Type: Fee Simple



Region 4 Proposed Project

Lower Nooksack River Project

- ▣ Part of a 1,200 acre Lower Nooksack River Conservation and Restoration project
- ▣ Chinook, steelhead bull trout, waterfowl concentrations
- ▣ Wildlife viewing, hunting, fishing, hiking
- ▣ Multi-partner (Whatcom Co, Nooksack Salmon Enhancement Assoc., Lummi Tribe, Nooksack Tribe)

Lands 20/20 Public Comments

Public Comment Summary

▣ Total comments received	14
▣ Support	10
▣ Opposed	4

Public Comments

- ▣ Support Letters
 - Revere Addition supported by 5 individuals
 - Lower Nooksack River Project supported by 1 individual
 - Support for land acquisition in general - 5 individuals

Next Steps

- ▣ Respond to public comments as needed
- ▣ RCO Lands Forum - March 2015
- ▣ Finalize acquisitions
- ▣ Director approval