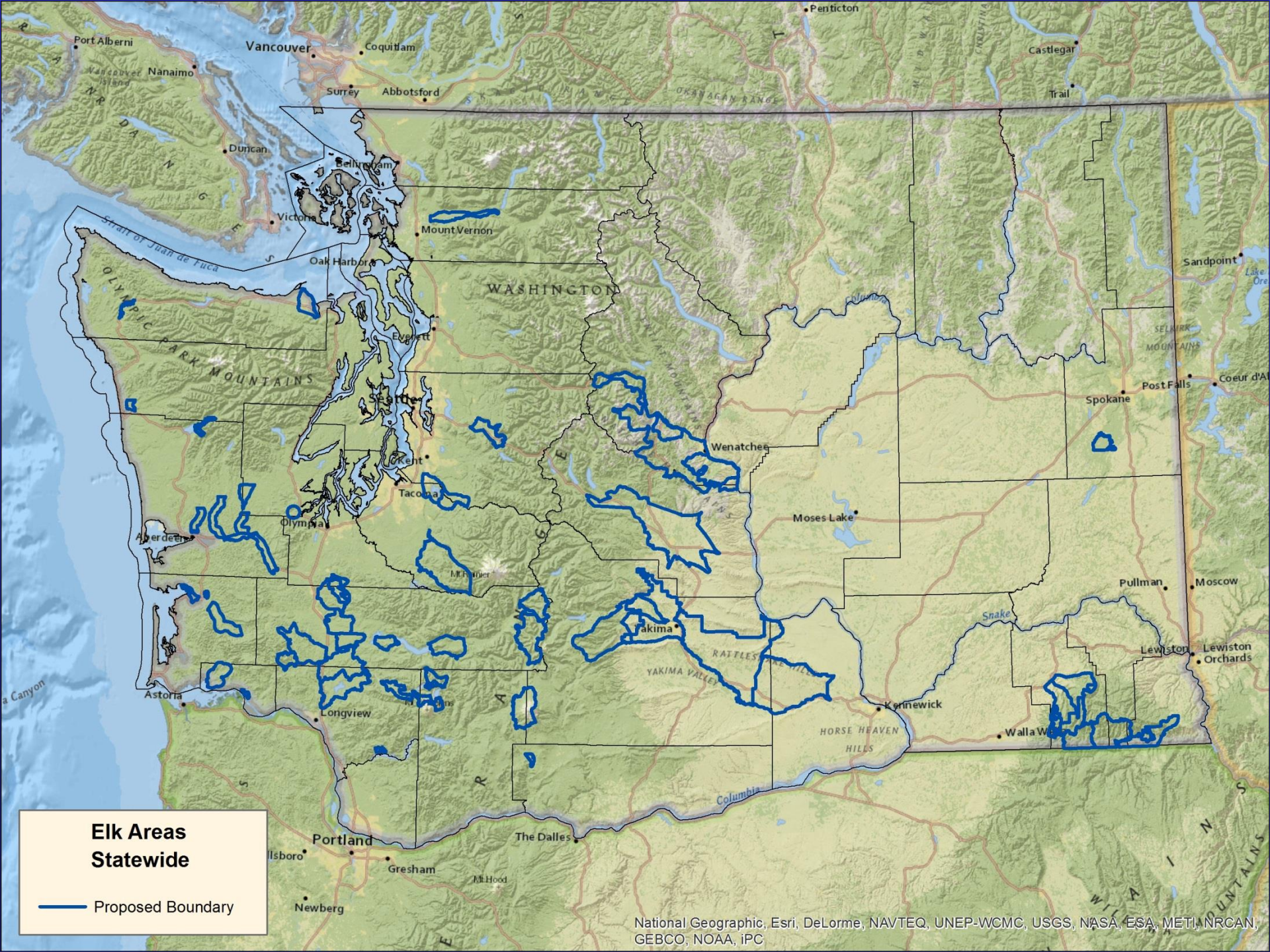


Elk Areas, Deer Areas, Firearm Restriction Areas

**Jerry Nelson, Deer and Elk
Section Manager, Game
Division, Wildlife Program**

Special Closures and Firearm Restriction Areas

- **WAC 232-28-248**
- **Proposals adjust boundaries/dates of firearm restriction areas to make them safer and more effective**
- **Proposed adjustments are in GMUs 660, 681, and 684**
- **Also would allow .40 caliber or larger semi-auto handguns during modern**



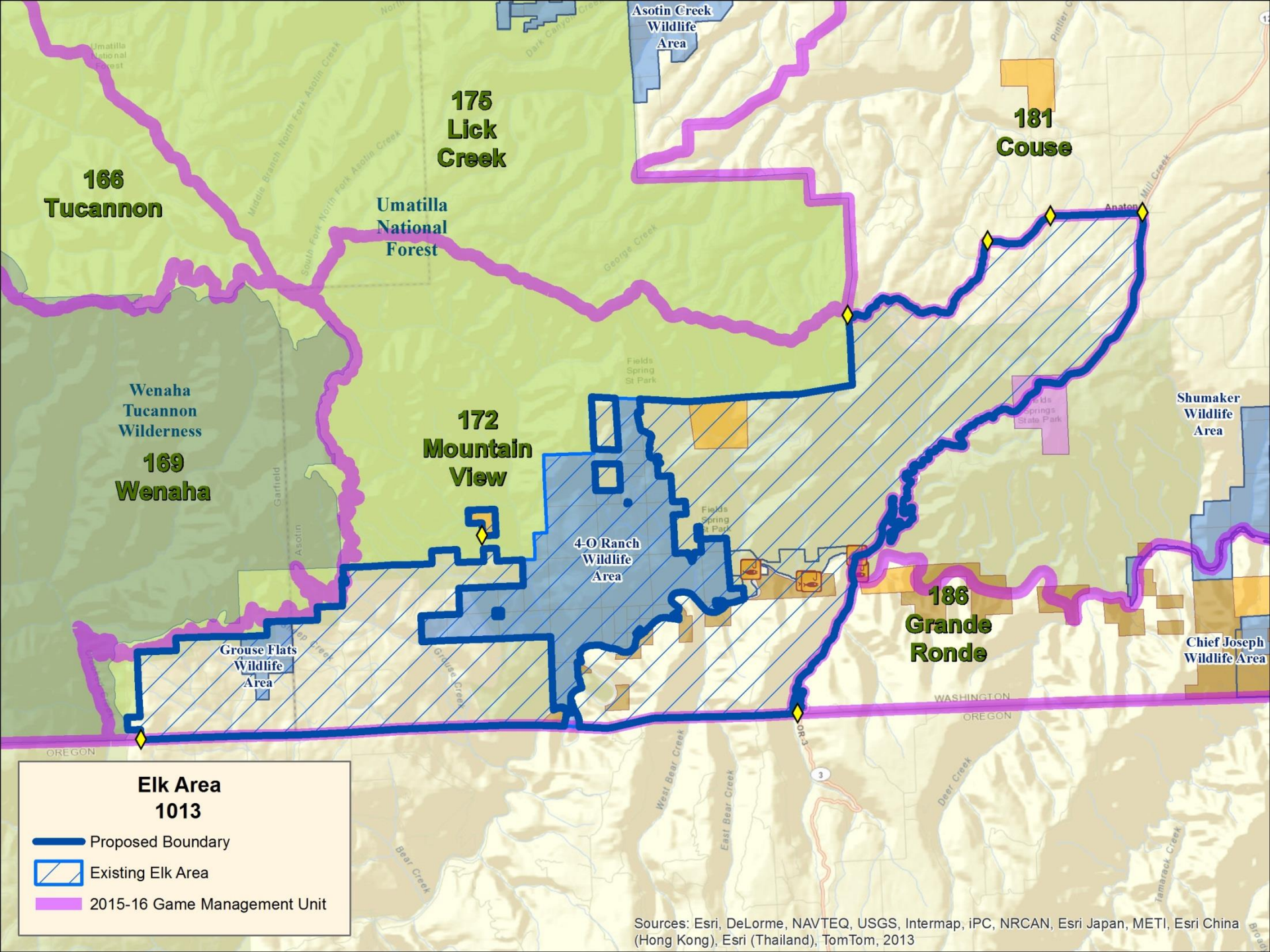
Elk Areas Statewide

— Proposed Boundary



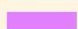
Elk Areas

WAC 232-28-337 Proposals:

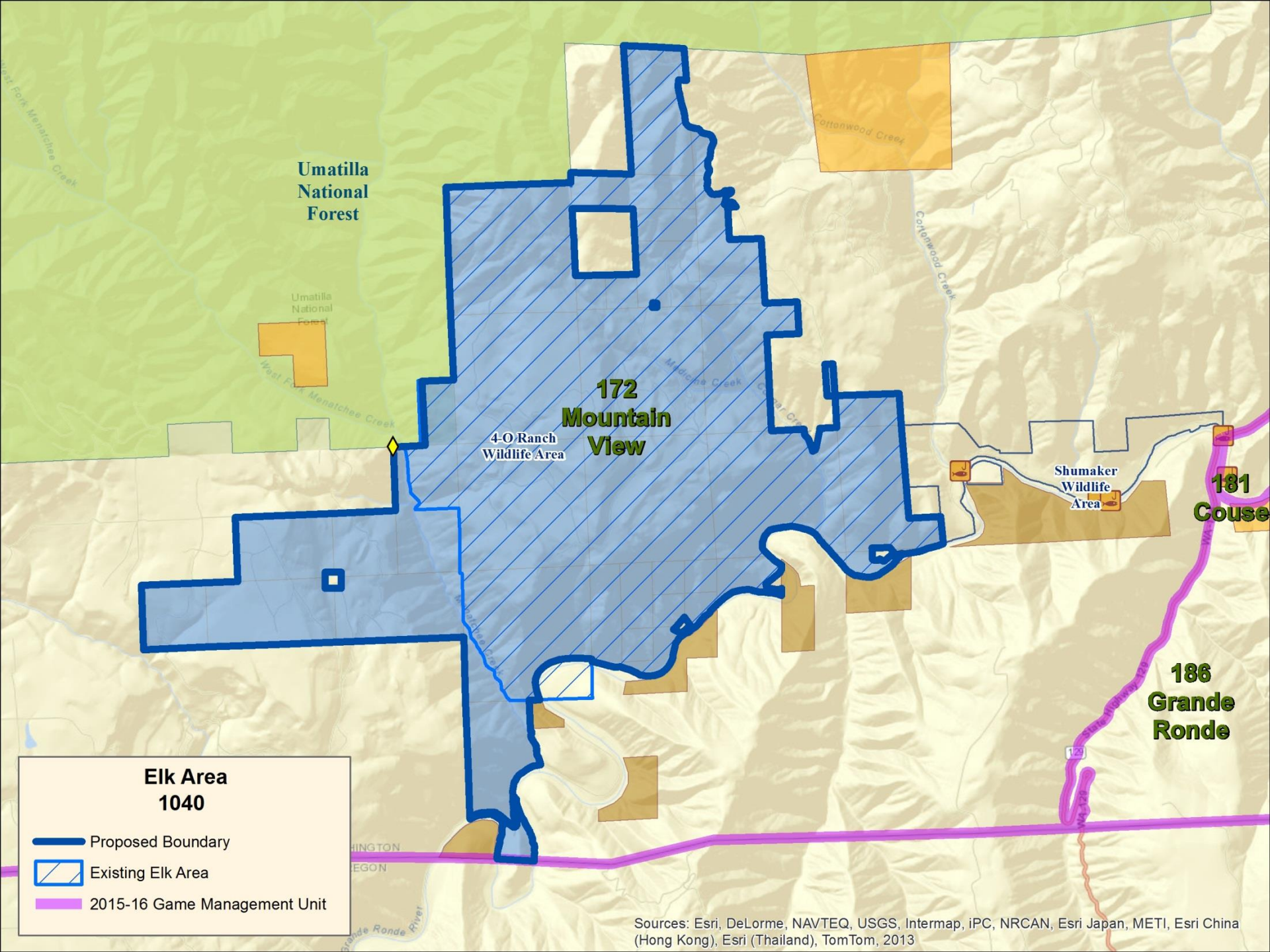
- **Adjust boundaries on Elk Area 1040 and Elk Area 1013 to accommodate hunts on 4-0 Ranch Wildlife Area**
- **Adjust EA 3911 boundary to remove public land**
- **Adjust EA 5062 to refocus to current elk problems**






Elk Area 1013

-  Proposed Boundary
-  Existing Elk Area
-  2015-16 Game Management Unit

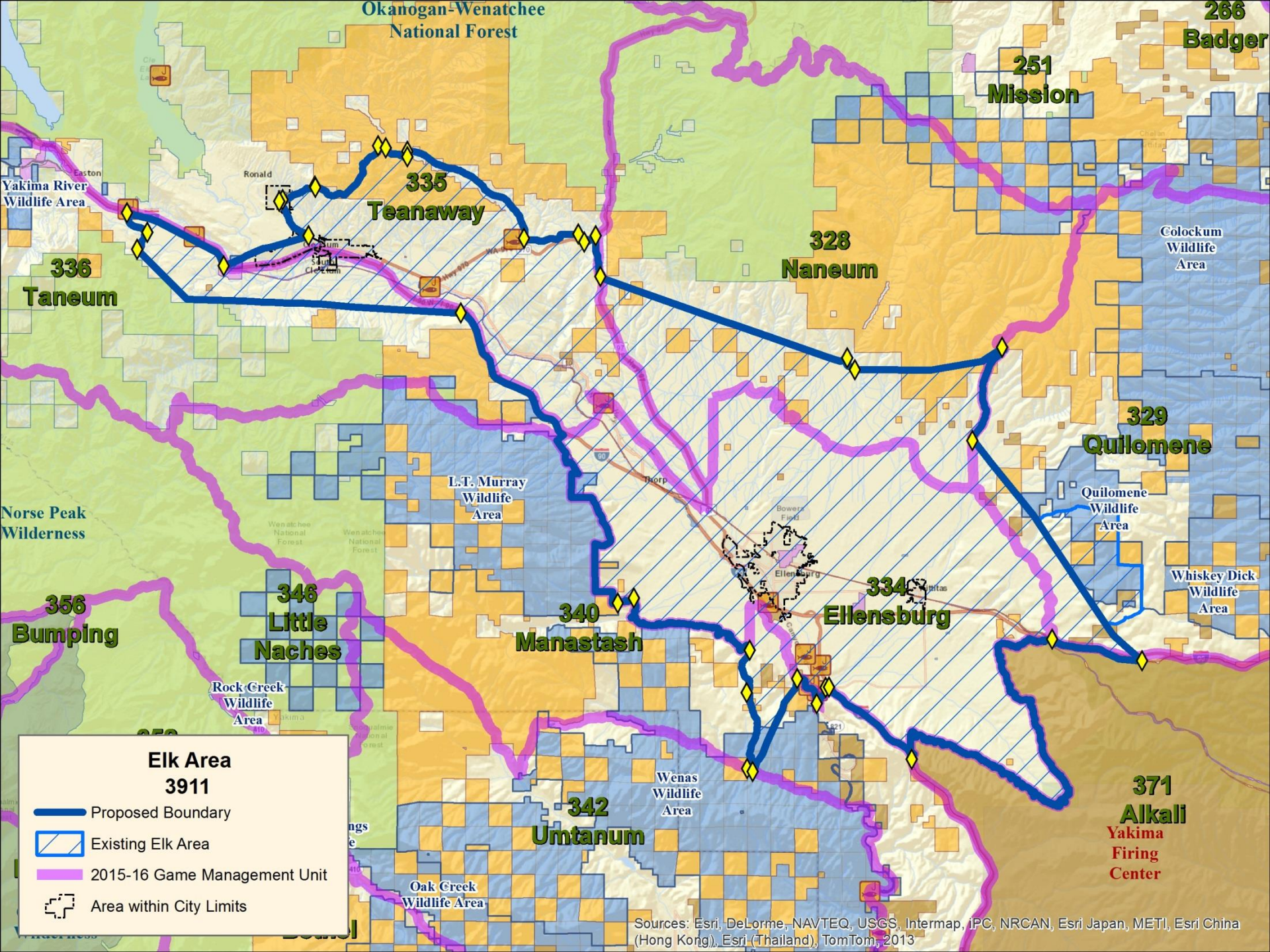
Sources: Esri, DeLorme, NAVTEQ, USGS, Intermap, iPC, NRCAN, Esri Japan, METI, Esri China (Hong Kong), Esri (Thailand), TomTom, 2013





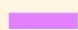
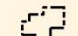
Elk Area 1040

-  Proposed Boundary
-  Existing Elk Area
-  2015-16 Game Management Unit

Sources: Esri, DeLorme, NAVTEQ, USGS, Intermap, iPC, NRCAN, Esri Japan, METI, Esri China (Hong Kong), Esri (Thailand), TomTom, 2013



**Elk Area
3911**

-  Proposed Boundary
-  Existing Elk Area
-  2015-16 Game Management Unit
-  Area within City Limits

Okanogan-Wenatchee National Forest

266 Badger

251 Mission

Yakima River Wildlife Area

335 Teanaway

328 Naneum

Colockum Wildlife Area

336 Taneum

329 Quillomene

Norse Peak Wilderness

L.T. Murray Wildlife Area

Quillomene Wildlife Area

Whiskey Dick Wildlife Area

356 Bumping

346 Little Naches

340 Manastash

334 Ellensburg

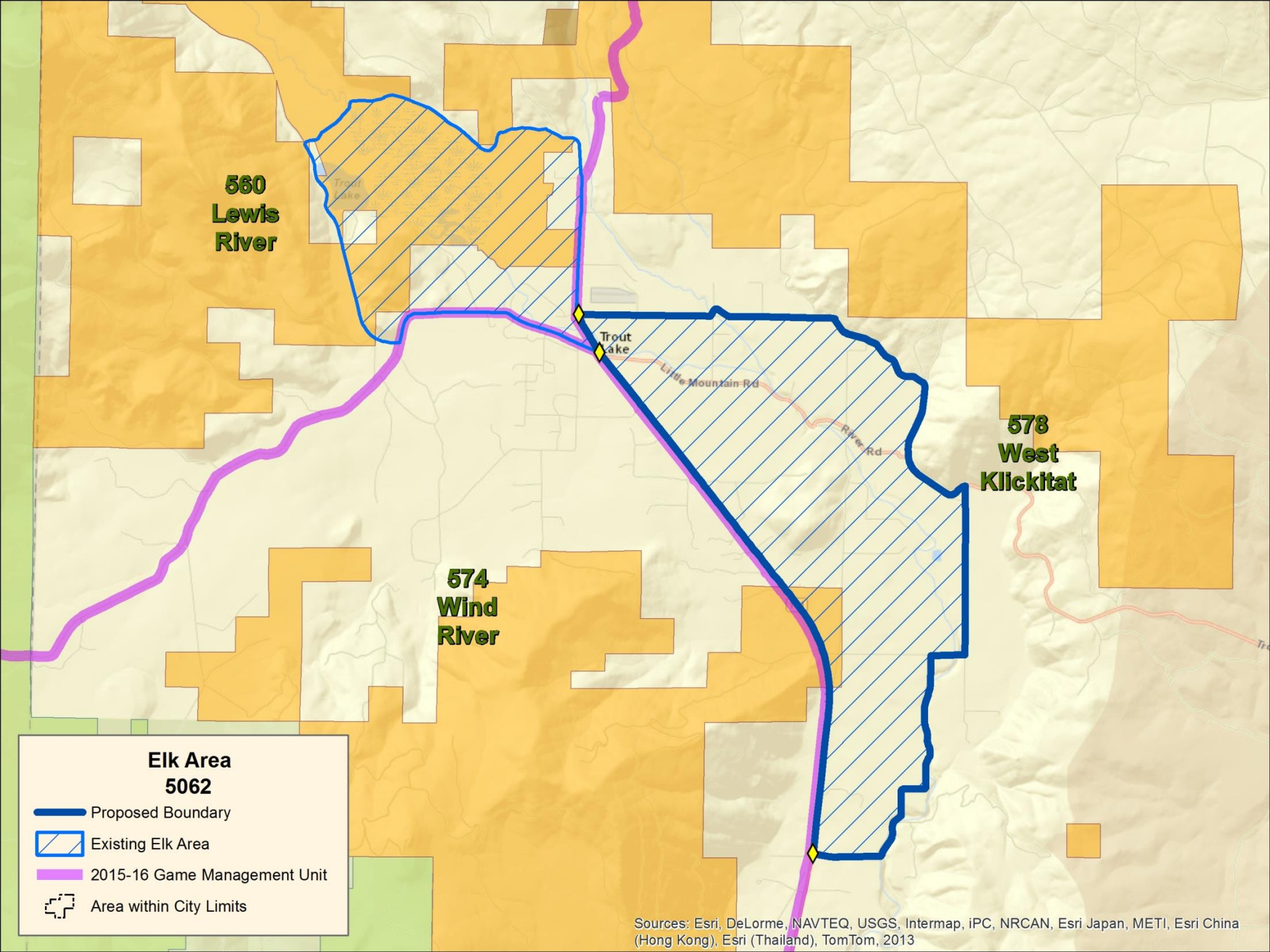
Rock Creek Wildlife Area

342 Umtanum

Wenas Wildlife Area

371 Alkali
Yakima Firing Center

Oak Creek Wildlife Area



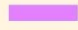
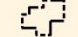


**560
Lewis
River**

**574
Wind
River**

**578
West
Klickitat**

**Elk Area
5062**

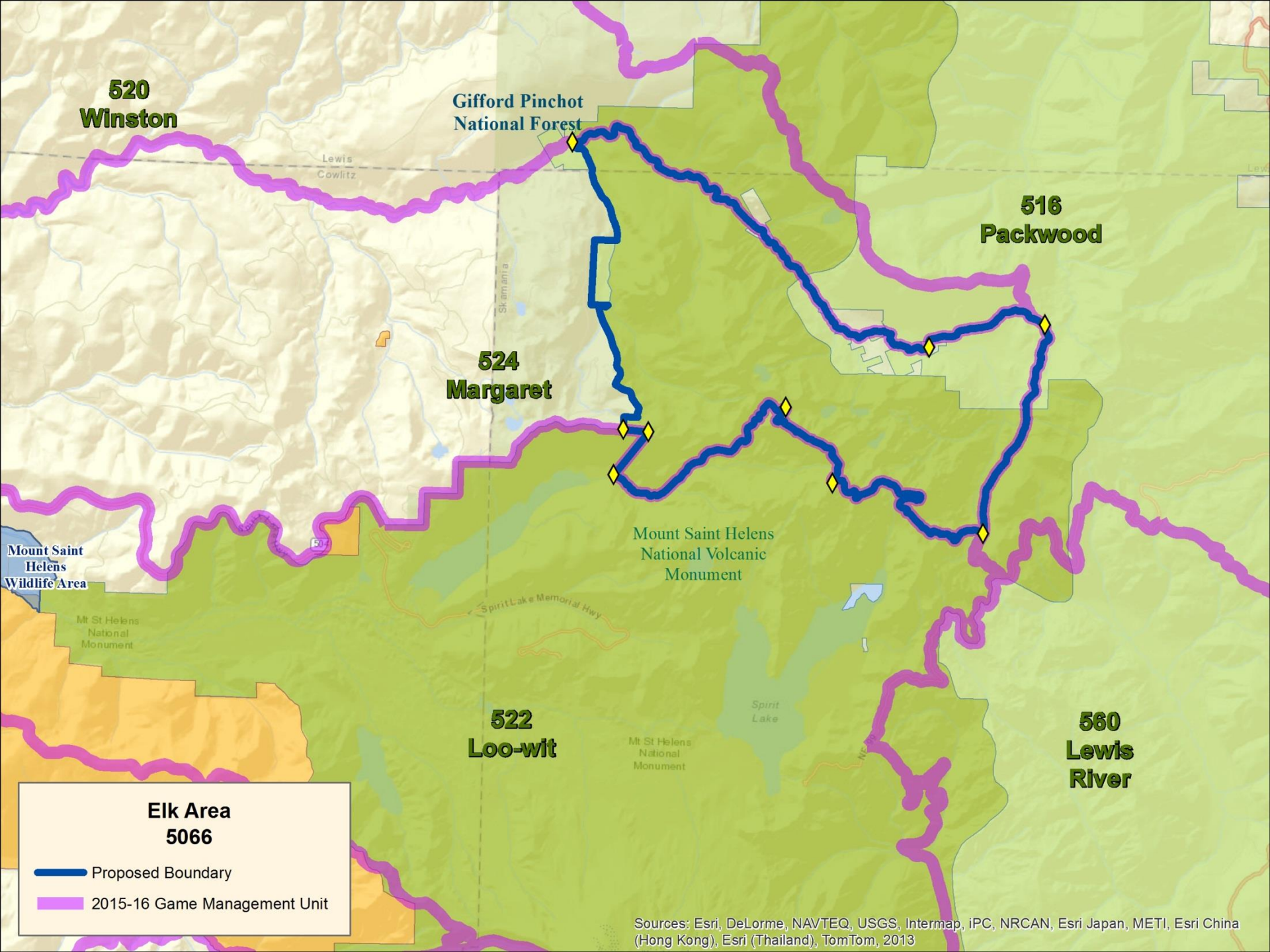
-  Proposed Boundary
-  Existing Elk Area
-  2015-16 Game Management Unit
-  Area within City Limits

Sources: Esri, DeLorme, NAVTEQ, USGS, Intermap, IPC, NRCAN, Esri Japan, METI, Esri China (Hong Kong), Esri (Thailand), TomTom, 2013

Elk Areas

WAC 232-28-337 Proposals

- **Create EA 5066 Norway Pass**
- **Divide EA 6013 into EA 6013 and new EA 6014 to better address elk damage in Pierce County**
- **Shrink EA 6071 to better focus on damage area**



**520
Winston**

**Gifford Pinchot
National Forest**

**516
Packwood**



**524
Margaret**

**Mount Saint Helens
National Volcanic
Monument**

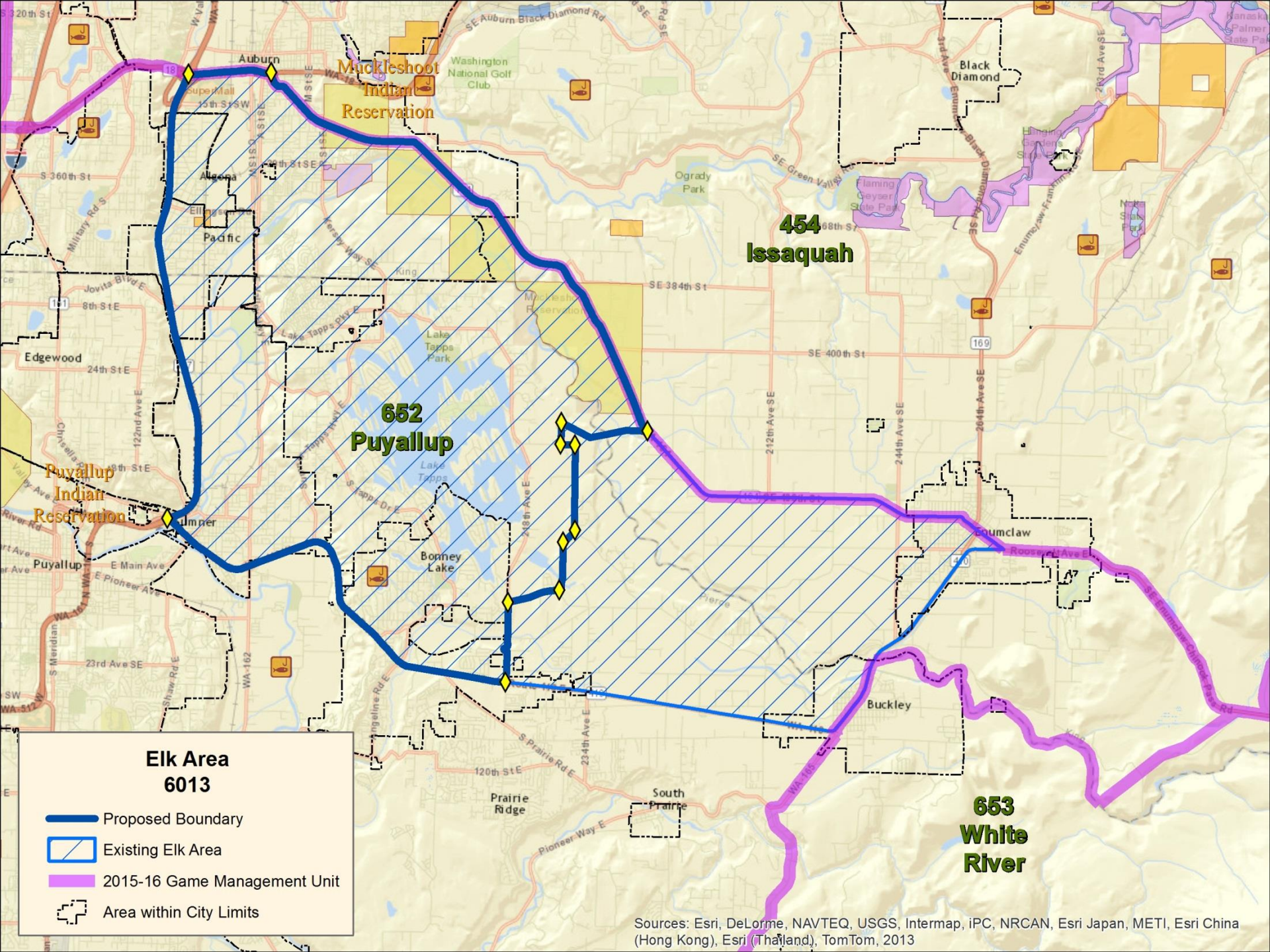
**522
Loo-wit**

**560
Lewis
River**





**Elk Area
5066**

-  Proposed Boundary
-  2015-16 Game Management Unit

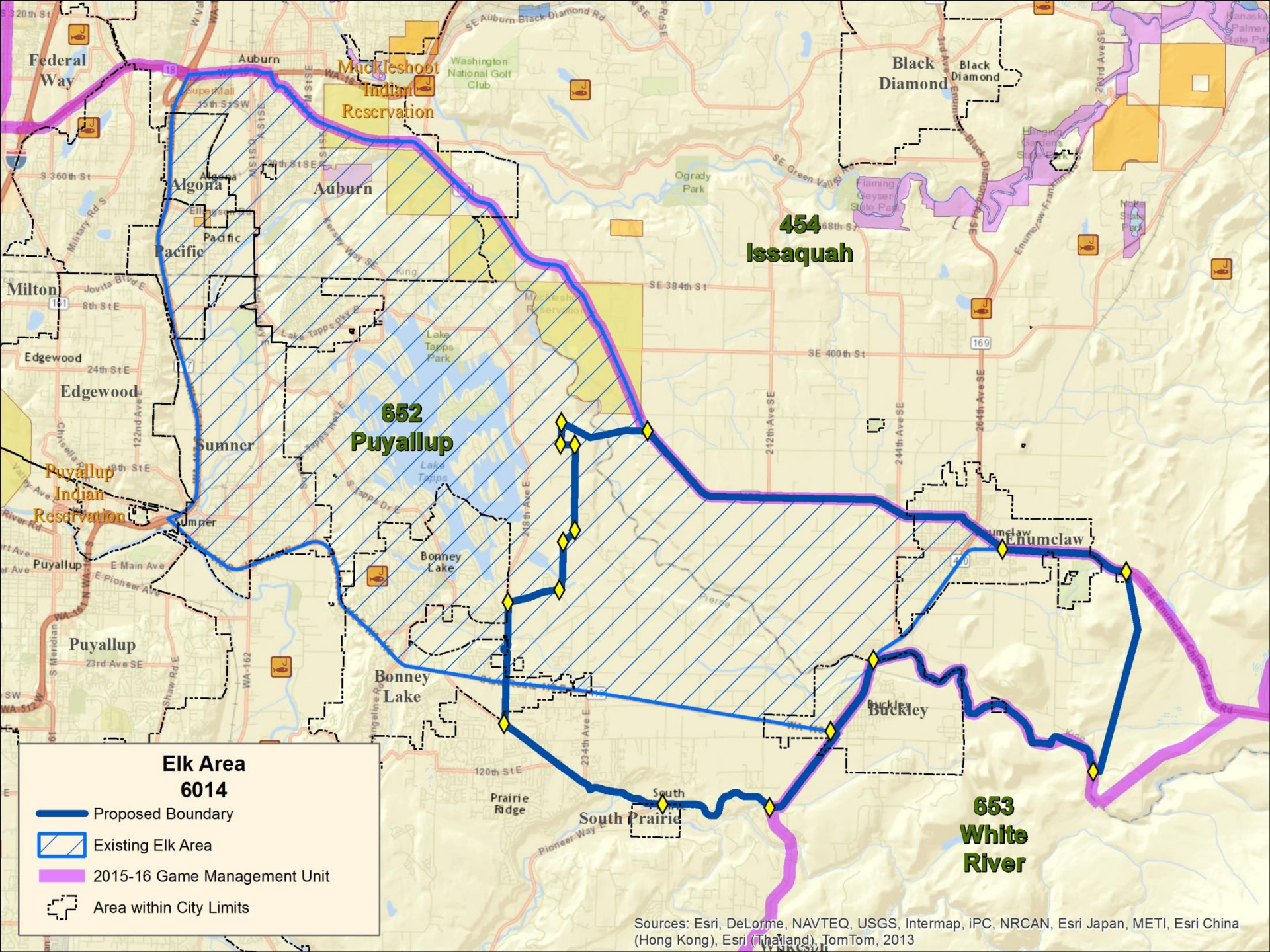
Sources: Esri, DeLorme, NAVTEQ, USGS, Intermap, IPC, NRCAN, Esri Japan, METI, Esri China (Hong Kong), Esri (Thailand), TomTom, 2013





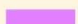
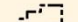
**Elk Area
6013**

-  Proposed Boundary
-  Existing Elk Area
-  2015-16 Game Management Unit
-  Area within City Limits

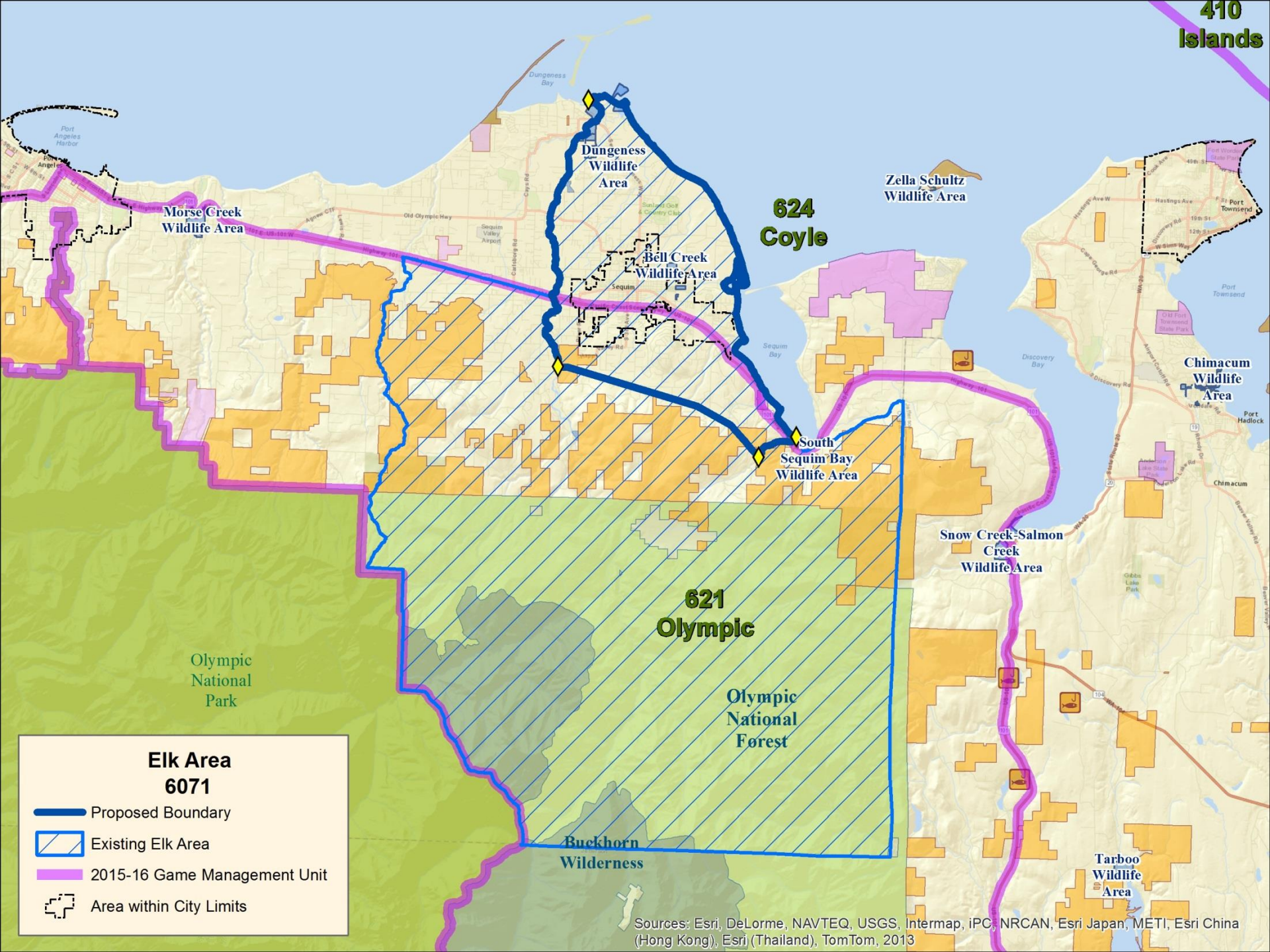
Sources: Esri, DeLorme, NAVTEQ, USGS, Intermap, iPC, NRCAN, Esri Japan, METI, Esri China (Hong Kong), Esri (Thailand), TomTom, 2013





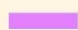
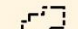
Elk Area 6014

-  Proposed Boundary
-  Existing Elk Area
-  2015-16 Game Management Unit
-  Area within City Limits

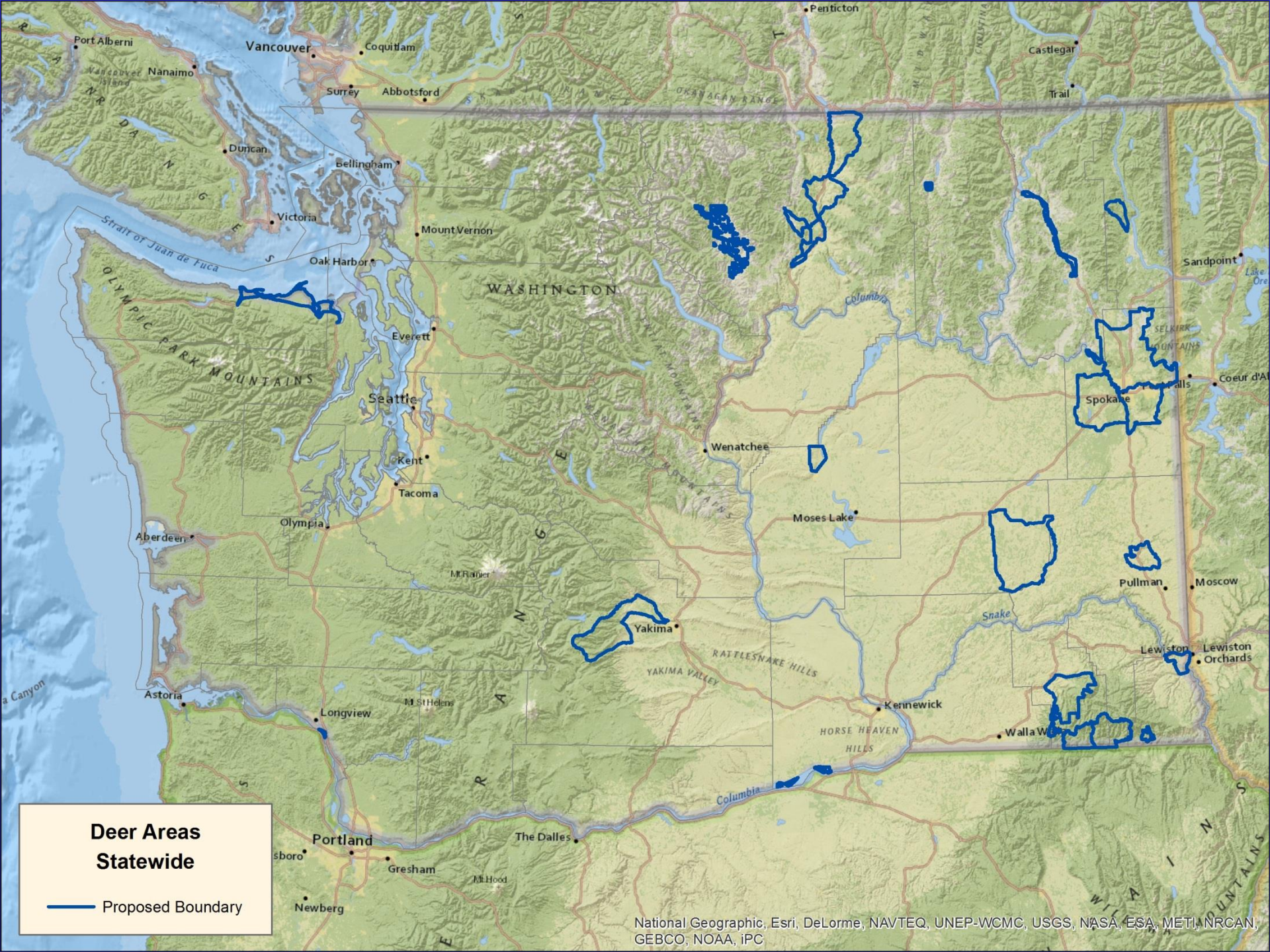
Sources: Esri, DeLorme, NAVTEQ, USGS, Intermap, iPC, NRCAN, Esri Japan, METI, Esri China (Hong Kong), Esri (Thailand), TomTom, 2013



**Elk Area
6071**

-  Proposed Boundary
-  Existing Elk Area
-  2015-16 Game Management Unit
-  Area within City Limits

Sources: Esri, DeLorme, NAVTEQ, USGS, Intermap, IPC, NRCAN, Esri Japan, METI, Esri China (Hong Kong), Esri (Thailand), TomTom, 2013



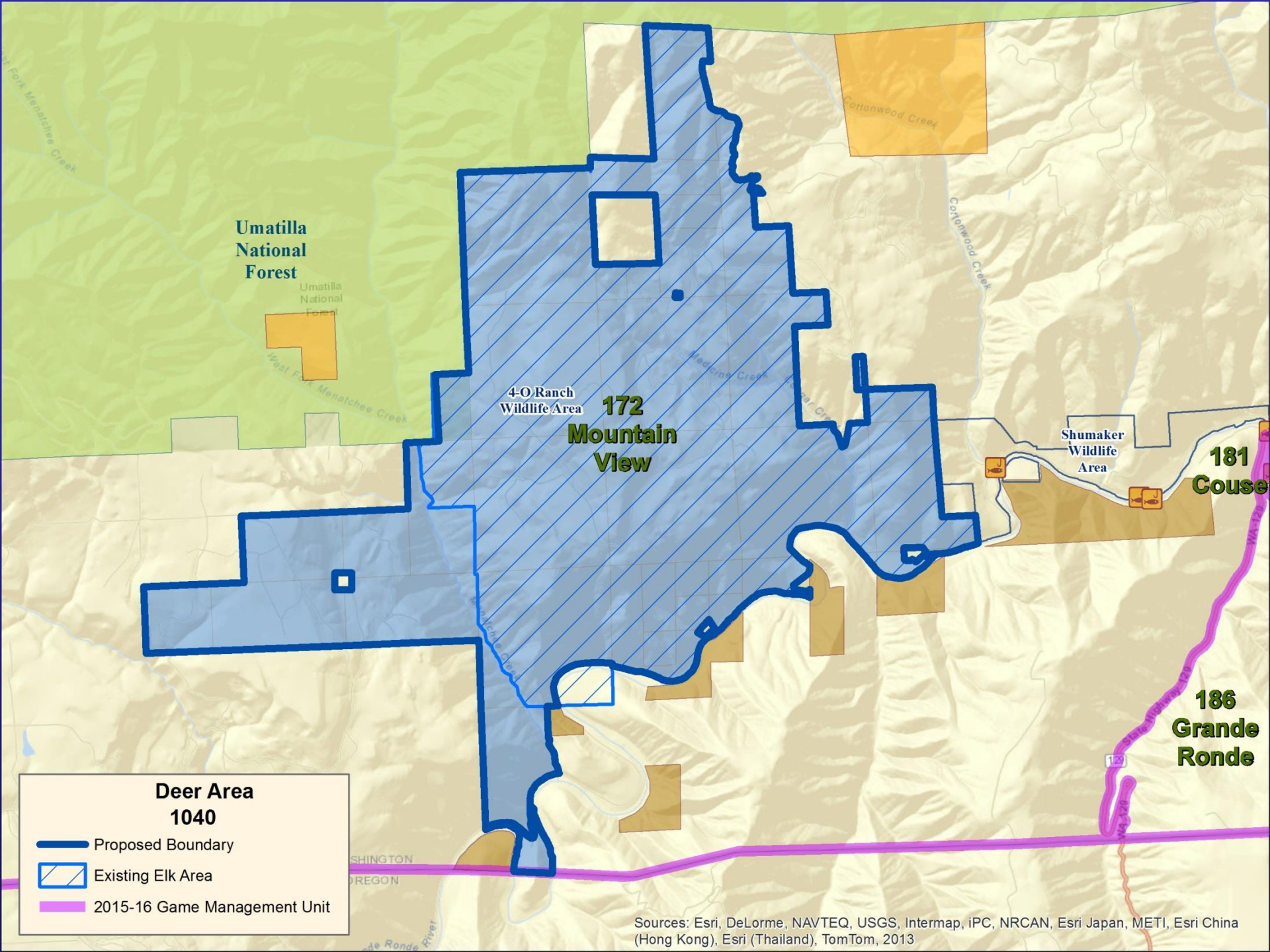
Deer Areas Statewide

— Proposed Boundary

Deer Areas

WAC 232-28-624 Proposals

- **Adjust Deer Area 1040 to accommodate hunts on 4-0 Ranch Wildlife Area**



Umatilla
National
Forest

Umatilla
National
Forest

4-O Ranch
Wildlife Area

**172
Mountain
View**

Shumaker
Wildlife
Area

**181
Couesville**

**186
Grande
Ronde**

**Deer Area
1040**

— Proposed Boundary

Existing Elk Area

2015-16 Game Management Unit

Questions