

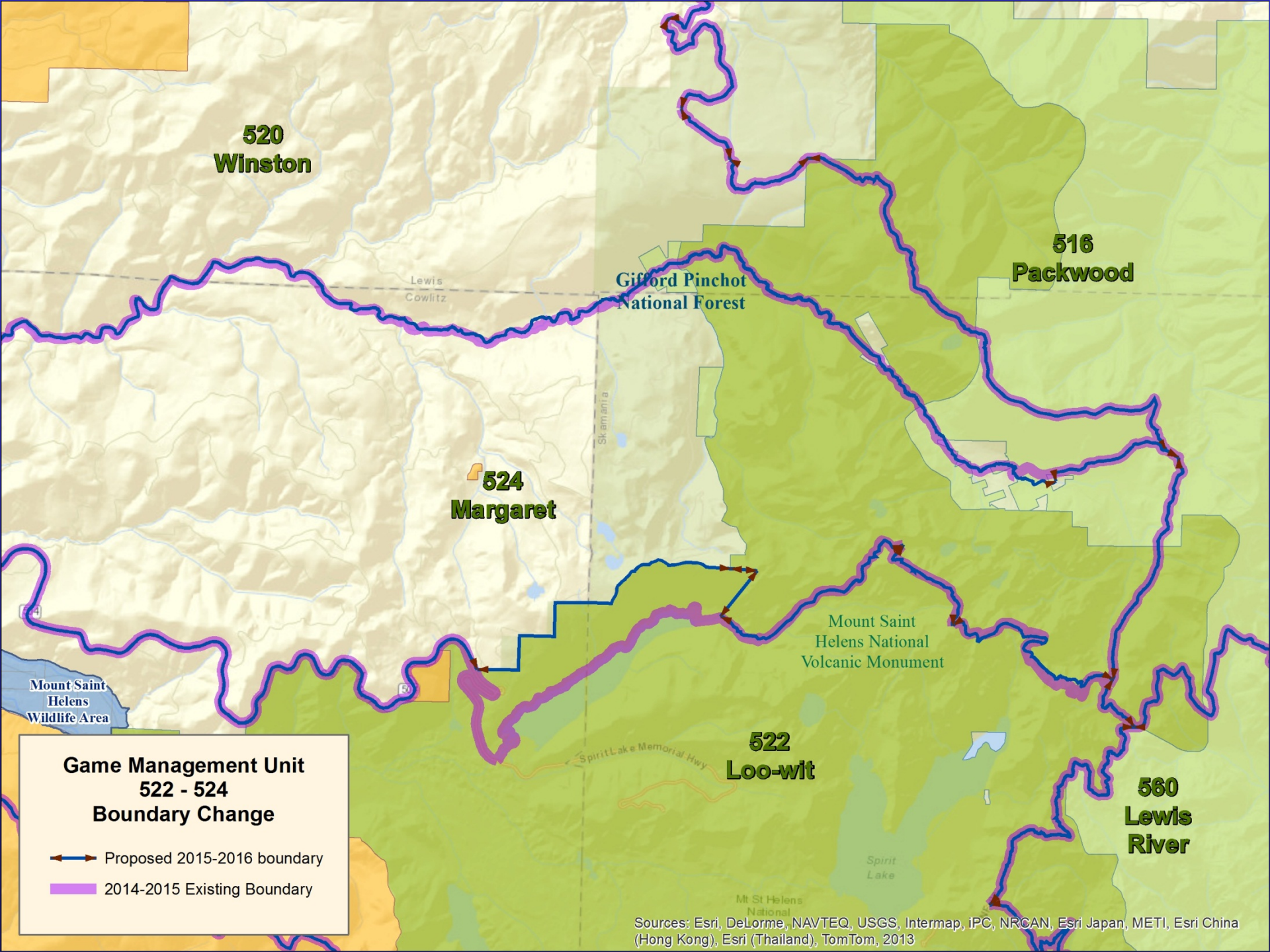
Game Management Units

Jerry Nelson

**Deer and Elk Section Manager
Game Division, Wildlife Program**

Game Management Units Region 1 and Region 5

- **WAC 232-28-331**
 - Clarify which intersection between 2 roads makes up the boundary.
 - Proposed change will address current confusion and challenges with enforceability
- **WAC 232-28-335**
 - Proposed change moves a small portion of land from GMU 524 to GMU 522
 - This strip of land is managed as a sensitive area by Mount St. Helens National Monument



**520
Winston**

**516
Packwood**

**524
Margaret**

**Gifford Pinchot
National Forest**

**Mount Saint
Helens National
Volcanic Monument**

**522
Loo-wit**

**560
Lewis
River**

**Mount Saint
Helens
Wildlife Area**

**Game Management Unit
522 - 524
Boundary Change**

- ←→ Proposed 2015-2016 boundary
- 2014-2015 Existing Boundary

Sources: Esri, DeLorme, NAVTEQ, USGS, Intermap, IPC, NRCAN, Esri Japan, METI, Esri China (Hong Kong), Esri (Thailand), TomTom, 2013

Questions?