

# Coastal Pelagic Commercial Fisheries: Briefing

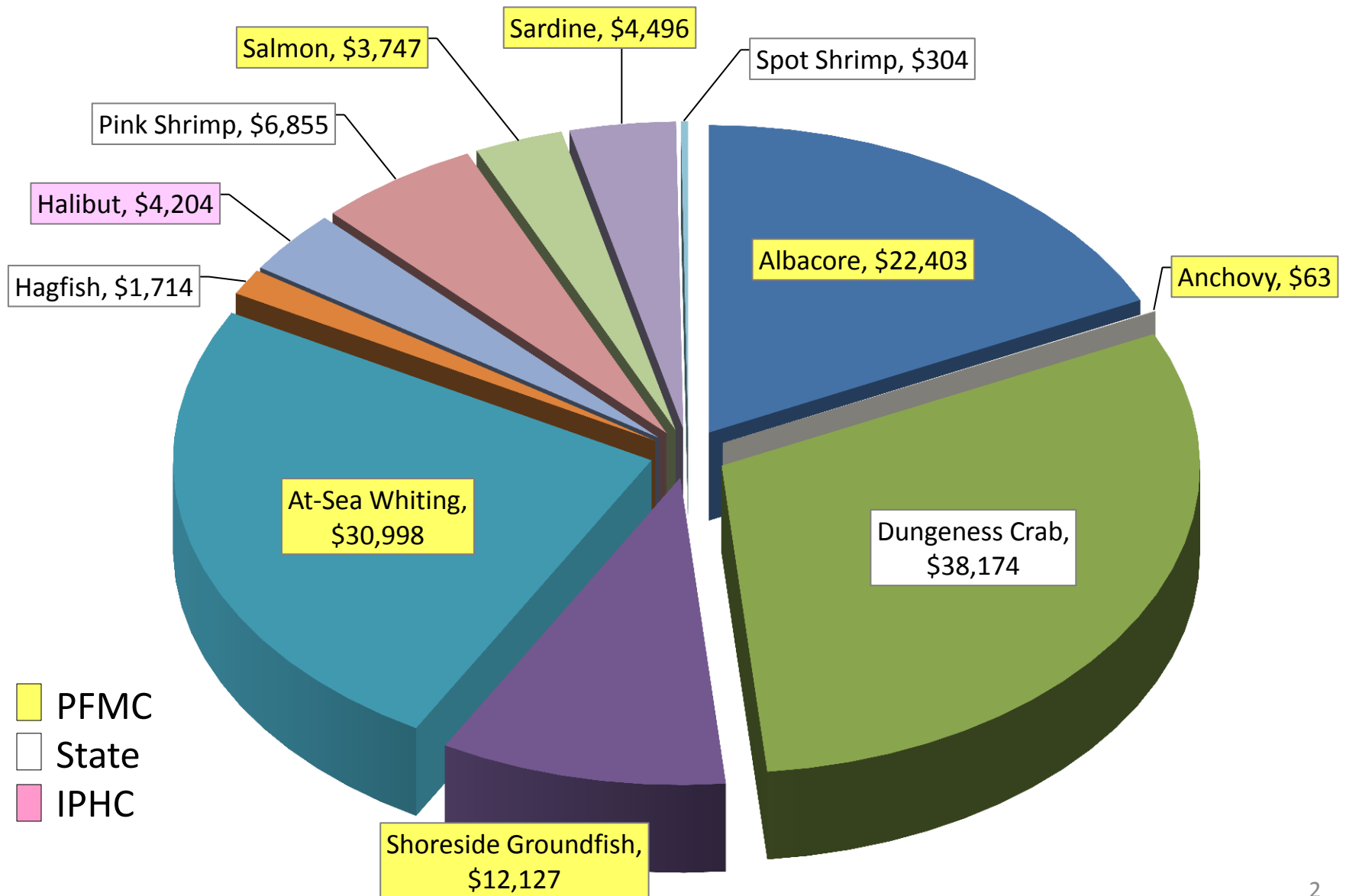


Washington  
Department of  
**FISH and  
WILDLIFE**

*Michele Culver, Regional Director*  
*Lorna Wargo, Coastal Pelagic Fisheries Manager*

*August 7, 2015*

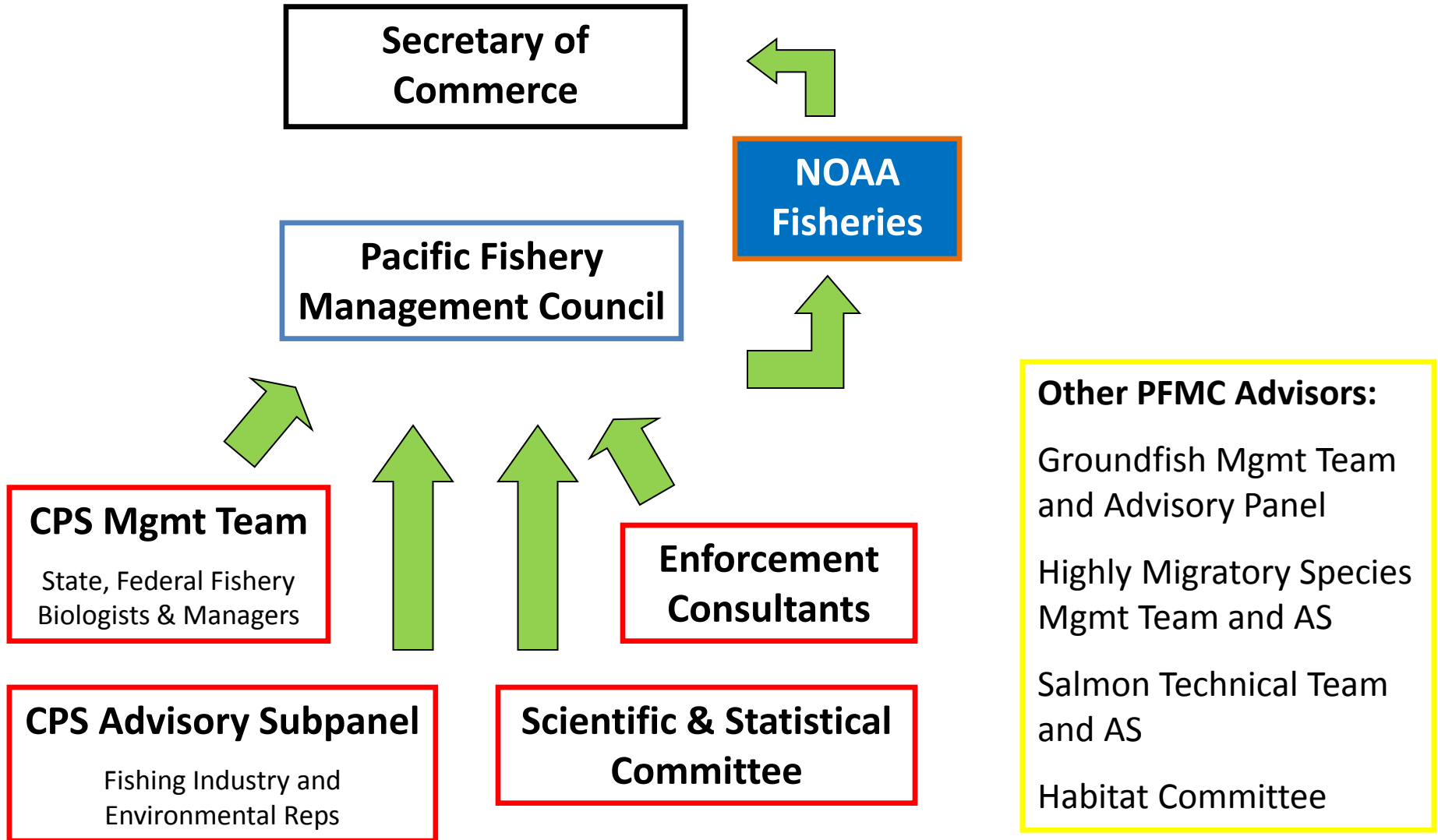
# WA Coastal Commercial Fisheries Average Ex-Vessel Revenue (thousands \$) 2010-2014



# Pacific Fishery Management Council

- **Magnuson-Stevens Fishery Conservation and Management Act (MSA)**
- **Exclusive Economic Zone (EEZ): 3-200 Miles Offshore**
- **Federal Fishery Management Plans:**
  - **Salmon (Primarily Chinook and Coho)**
  - **Groundfish (~ 100 Species, except Halibut)**
  - **Coastal Pelagic Species (e.g., Sardines, Anchovy)**
  - **Highly Migratory Species (e.g., Albacore Tuna)**
- **Regulations Adopted by NMFS**
- **State Regulations May be More Restrictive and/or Specific**

# Pacific Fishery Management Council Process



# CPS Fishery Management Plan

## Species

Manage:

**Pacific Sardine**

**Pacific Mackerel**

Market Squid

Monitor:

**Northern Anchovy**

Jack Mackerel

Ecosystem: Pacific Herring

Jacksmelt

Krill (*Prohibited*)



## **Stock Assessments**

Research Surveys

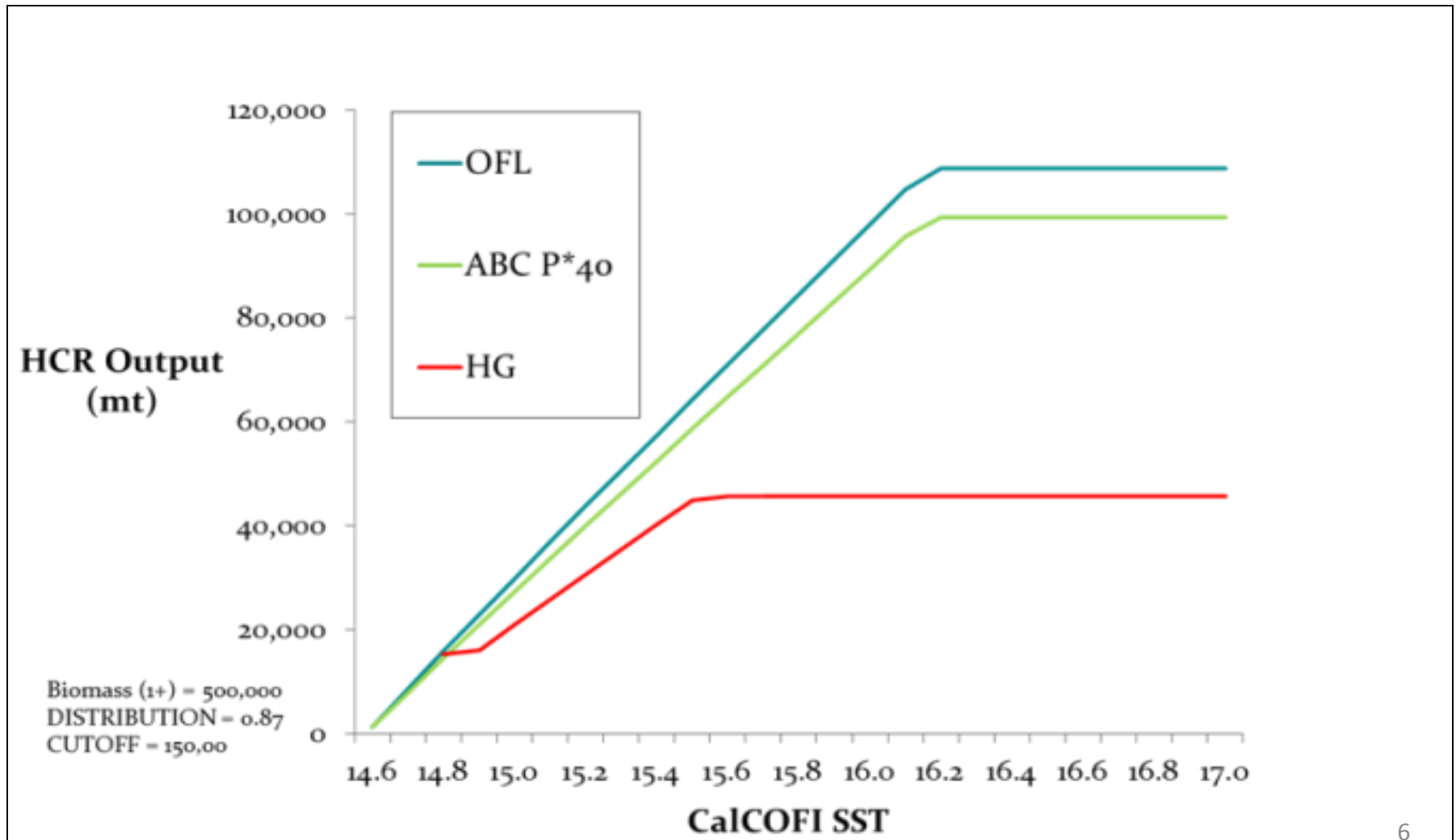
Biological Data

Catch Accounting

## **Harvest Control Rules**

# Sardine Harvest Guideline

**(BIOMASS – CUTOFF)\*FRACTION\*DISTRIBUTION**



# WDFW Forage Fish Policy and Management Plan (1998)

“This plan emphasizes the role of forage fish in the ecosystem and considers catch on a secondary basis.

The availability of forage fish to provide a source of food for salmon, other fish, marine birds and marine mammals will be a primary consideration.

To achieve this, potential catch will be foregone if needed.”

# Sardine



## Federal Management

- Federal Survey and Stock Assessment
- Annual Harvest Guideline for US West Coast
- **Emergency Closure 2014-2015 Season**
- **2015-2016 Season Closed**

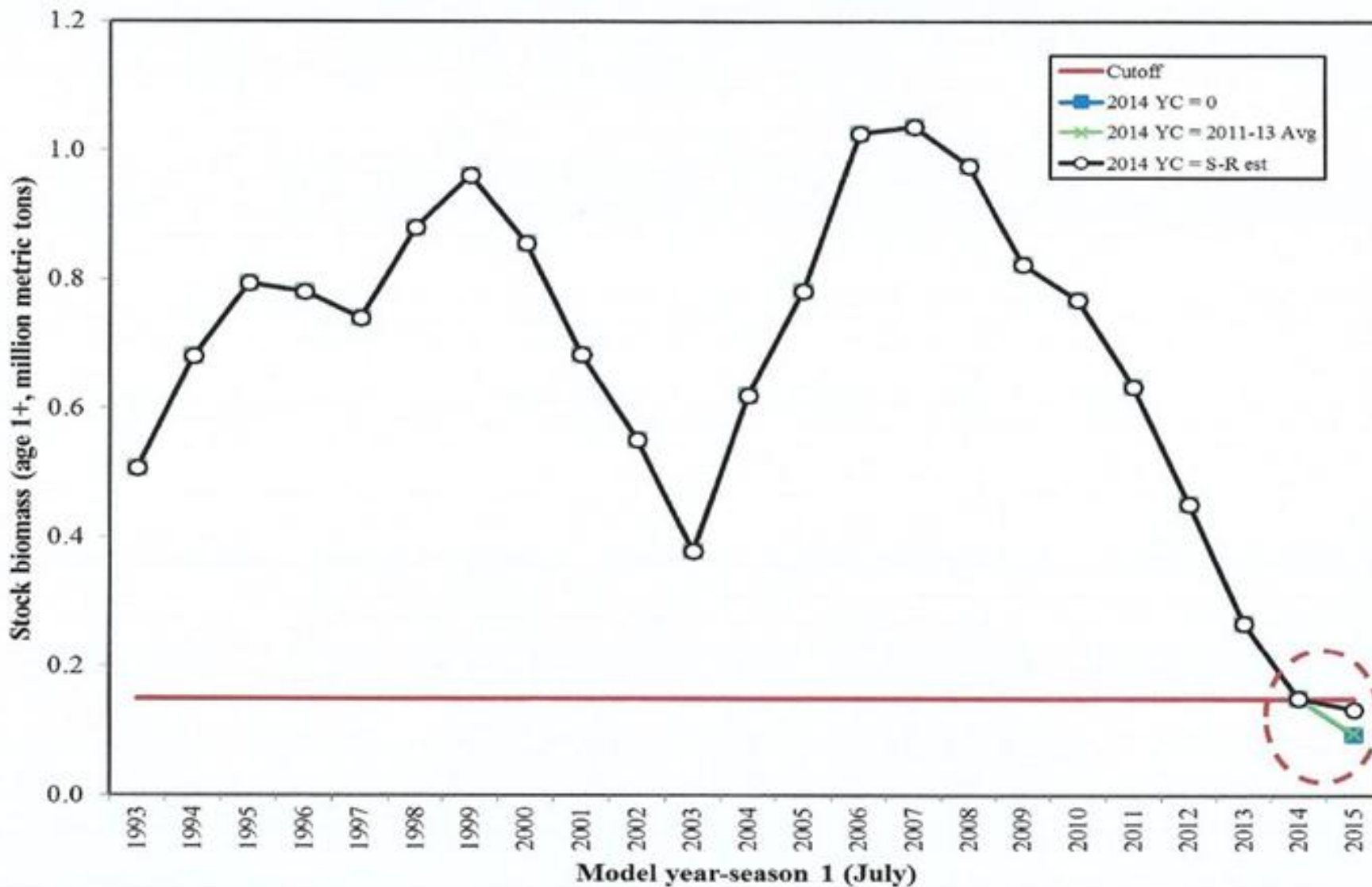
## State Commercial Fishery Regulations

- Purse Seine - Limited Entry: 16 Licenses, ~ 8 Active
- Fishery Open April 1 – Dec 31
- Closed Inside 3 Miles (State Waters)
- Reduction Restriction: 15% Across Season
- Prohibited Species (Bycatch): Salmon

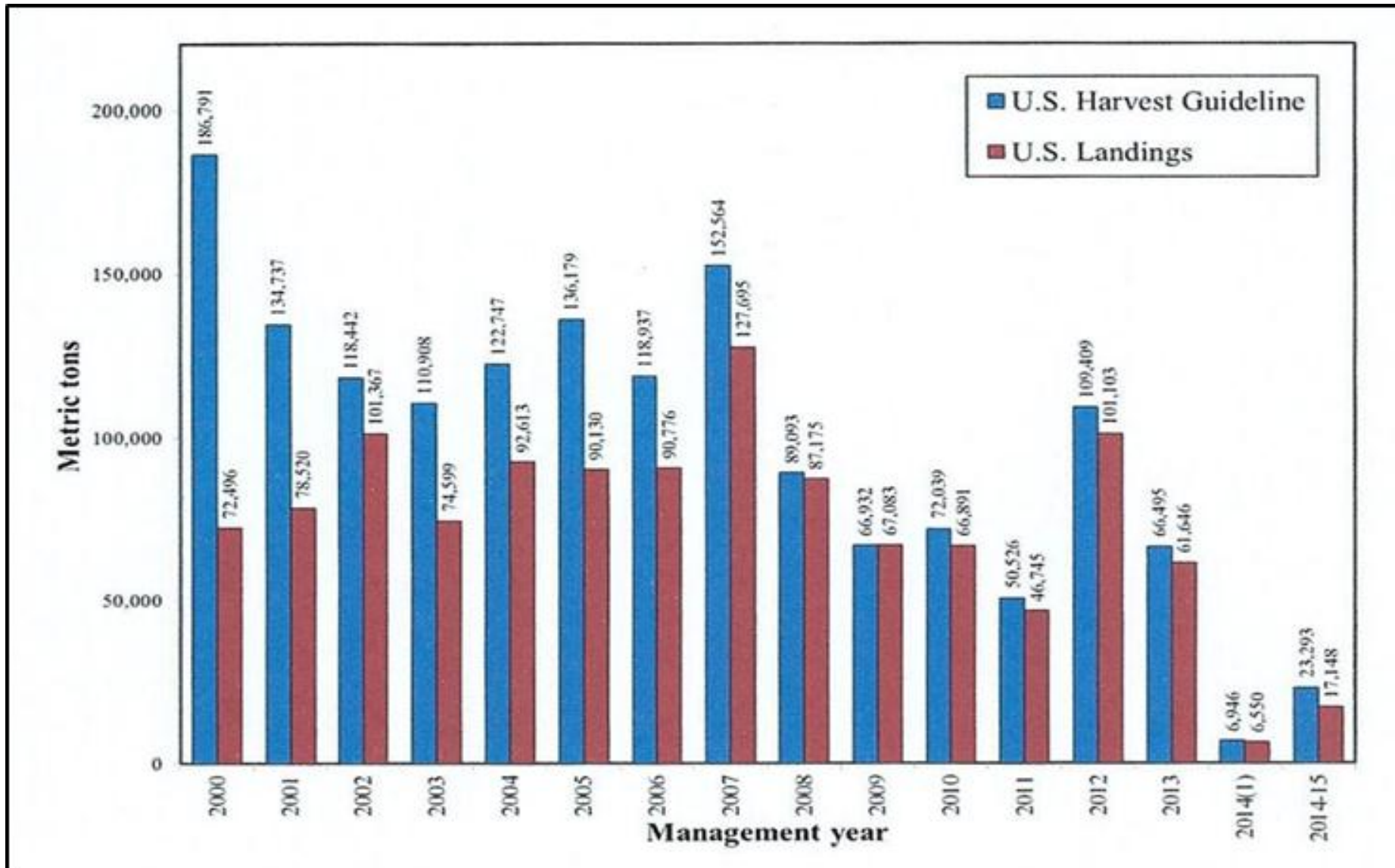


# Sardine

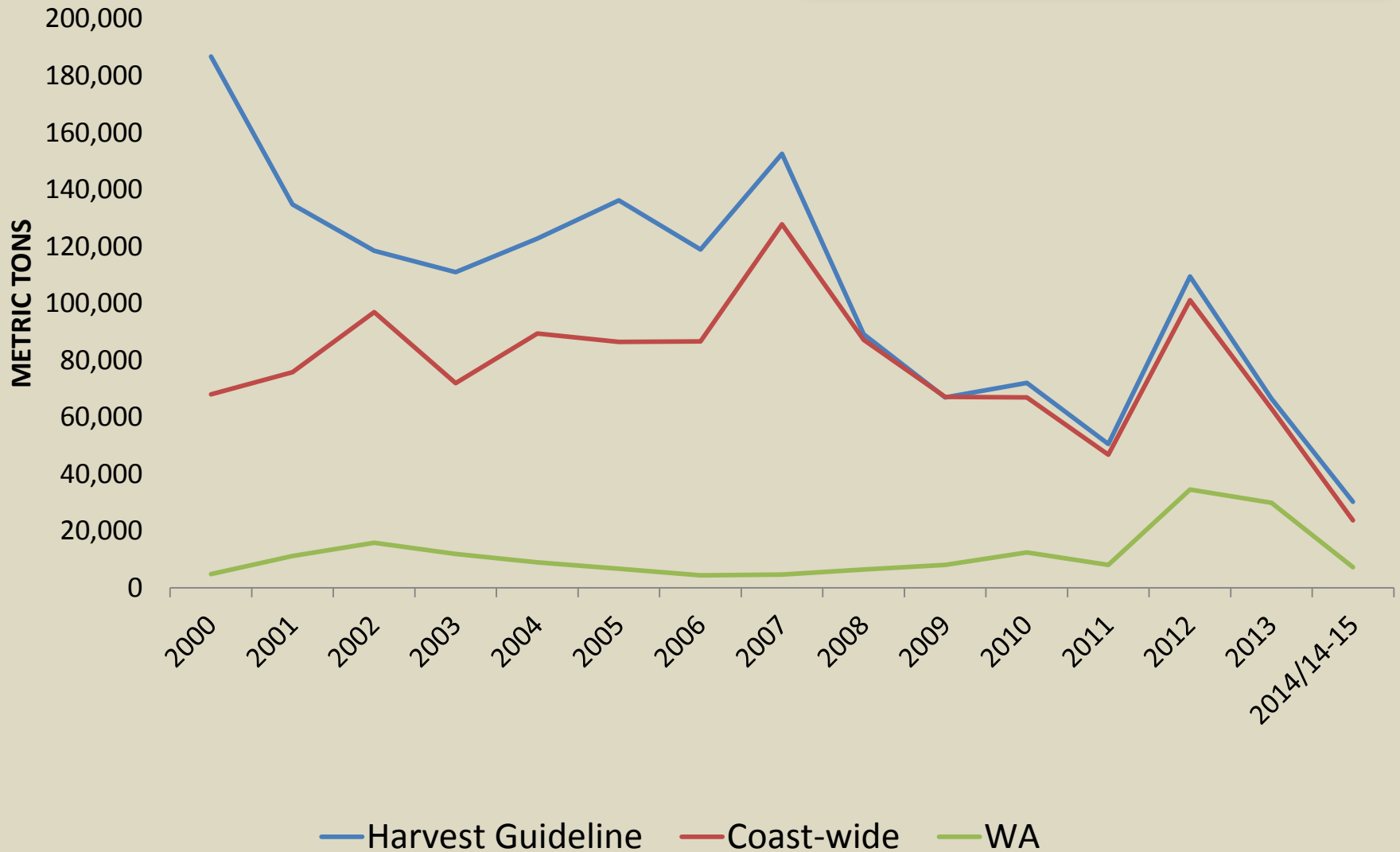
## Estimated Stock Biomass Series For Three 2014 YC Scenarios



# Sardine



# Sardine Landings



# Northern Anchovy



## Federal Management

- No Survey or Assessment
- Fixed Catch Limit (ACL) for US West Coast
- **Oceana Settlement Agreement with NMFS/PFMC**

## State Commercial Fishery Regulations

- Licenses: Open Access
  - Purse Seine (2/yr), Lampara (~ 3-10/yr)
- Spring Closure to Protect Out-Migrating Salmon
- Landing Limits: 11,000 lbs/day; 22,000 lbs/week
- Reduction Restriction: 15% per Landing

# Pacific Mackerel



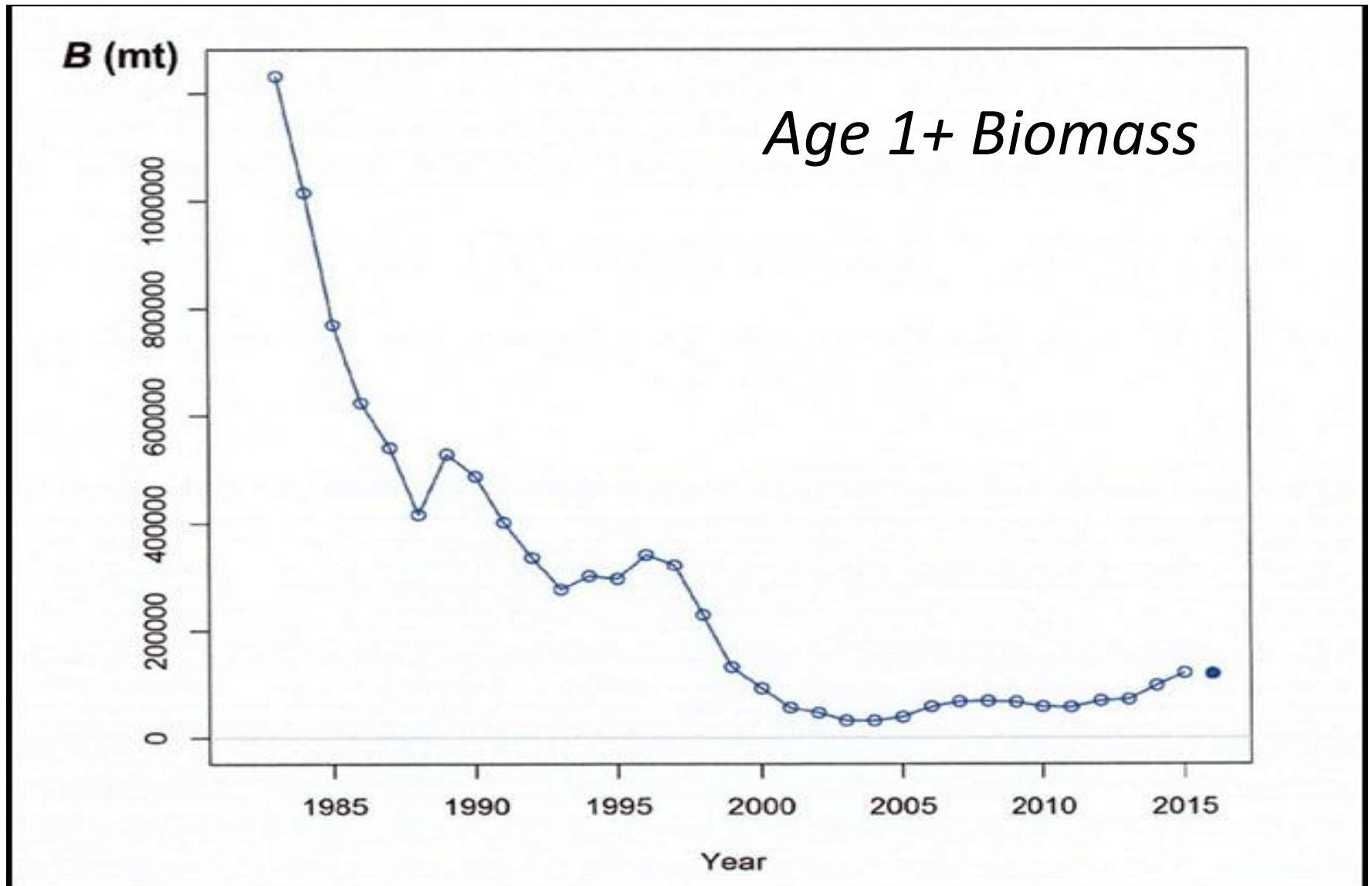
## Federal Management

- No Survey, but “Fully Assessed”
- Annual Harvest Guideline for US West Coast
- **Difficult to Target Without Incidental Sardine Harvest**

## State Commercial Fishery Regulations

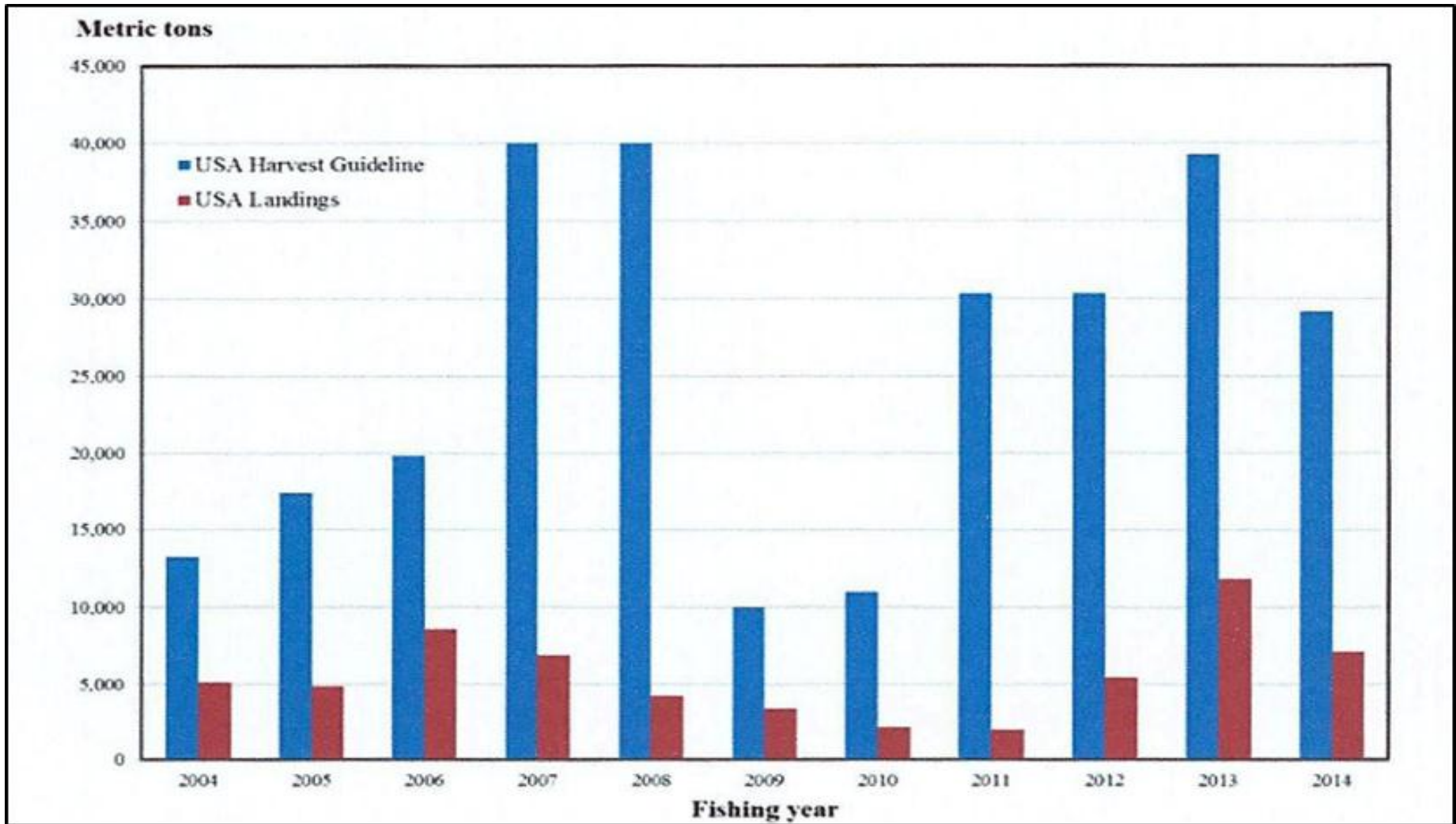
- No Directed Fishery Allowed
- Incidental Catch Allowed in Sardine Fishery

# Pacific Mackerel Abundance





# Pacific Mackerel Harvest Levels



# Pacific Mackerel:

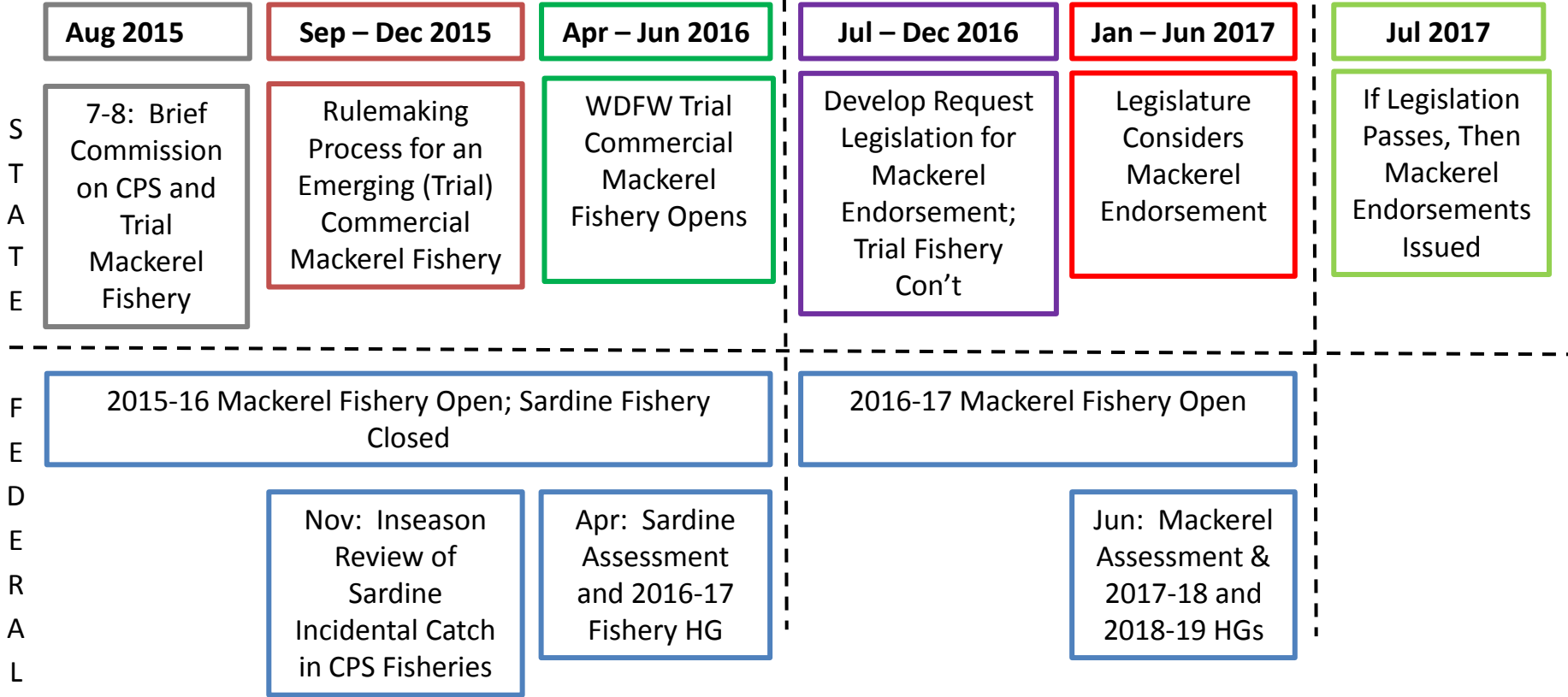


## Emerging Commercial Fishery Proposal

- **Washington and Oregon Processors**
  - Ocean Gold (Westport) and Ilwaco Fish Company
  - Pacific Seafood and Bornstein’s Seafood, Astoria, OR
- **2-3 Washington Sardine Harvesters**
- **Managed as a “Trial” Fishery – Open Access**
- **Need to Develop Specific Fishery Regulations**
  - May Include Season Dates, Trip Limits, Catch Monitoring, Reduction Restrictions



# State and Federal Processes and Timeline for Consideration of Mackerel Fishery



# In Summary

- **West Coast Sardine Biomass is Down and Will Likely Continue to be Low**
- **Pacific Mackerel Status is Somewhat Uncertain, but Acceptable Harvest Levels are Underachieved**
- **WA Sardine Industry Requesting Access to Federal Harvest Guideline for Mackerel**

## *Therefore:*

- **We Intend to Proceed Cautiously**
- **If We Move Forward with a Trial Fishery, We Will Develop Management Measures for Monitoring and Landing Limits to Ensure Appropriate Action Can be Taken in a Timely Manner, if Needed**