

Agenda Item 10

Deer Areas, Elk Areas, Special Closures and Firearm Restriction Areas, Hunting by Persons with a Disability

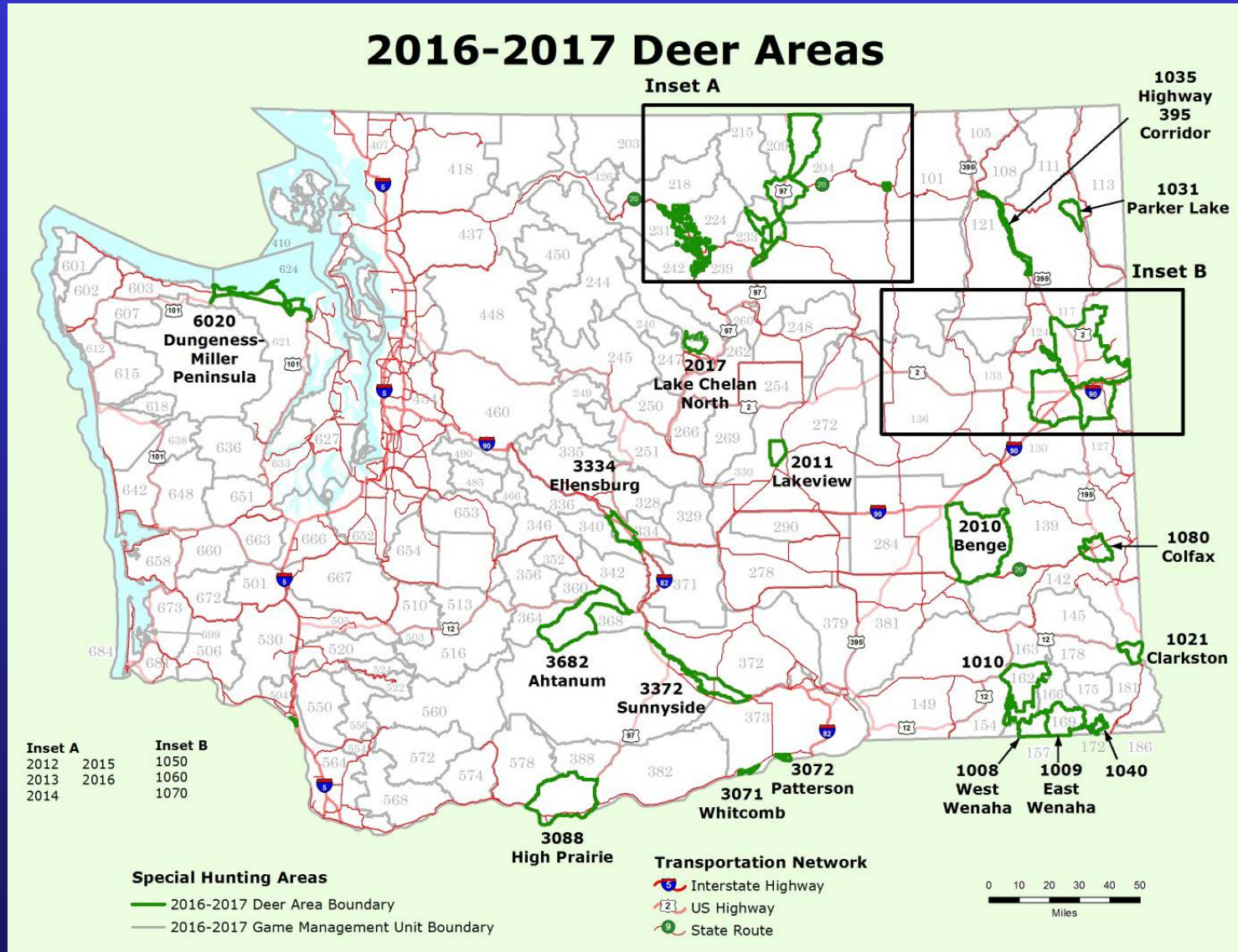


Washington Department of
FISH and WILDLIFE

Jerry Nelson, Ph.D.

Deer and Elk Section Manager, Game Division
Wildlife Program

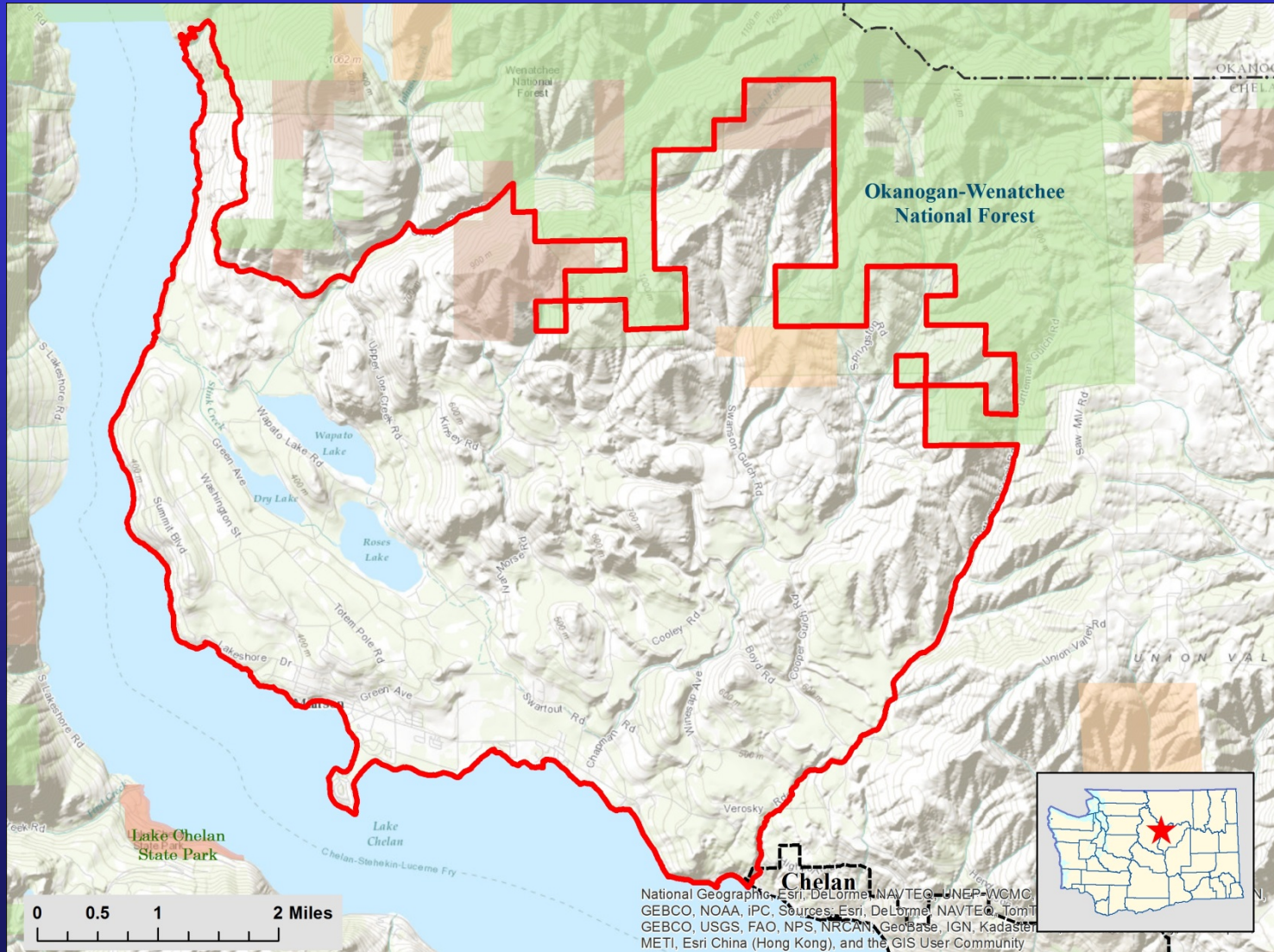
Deer Areas WAC 232-28-624



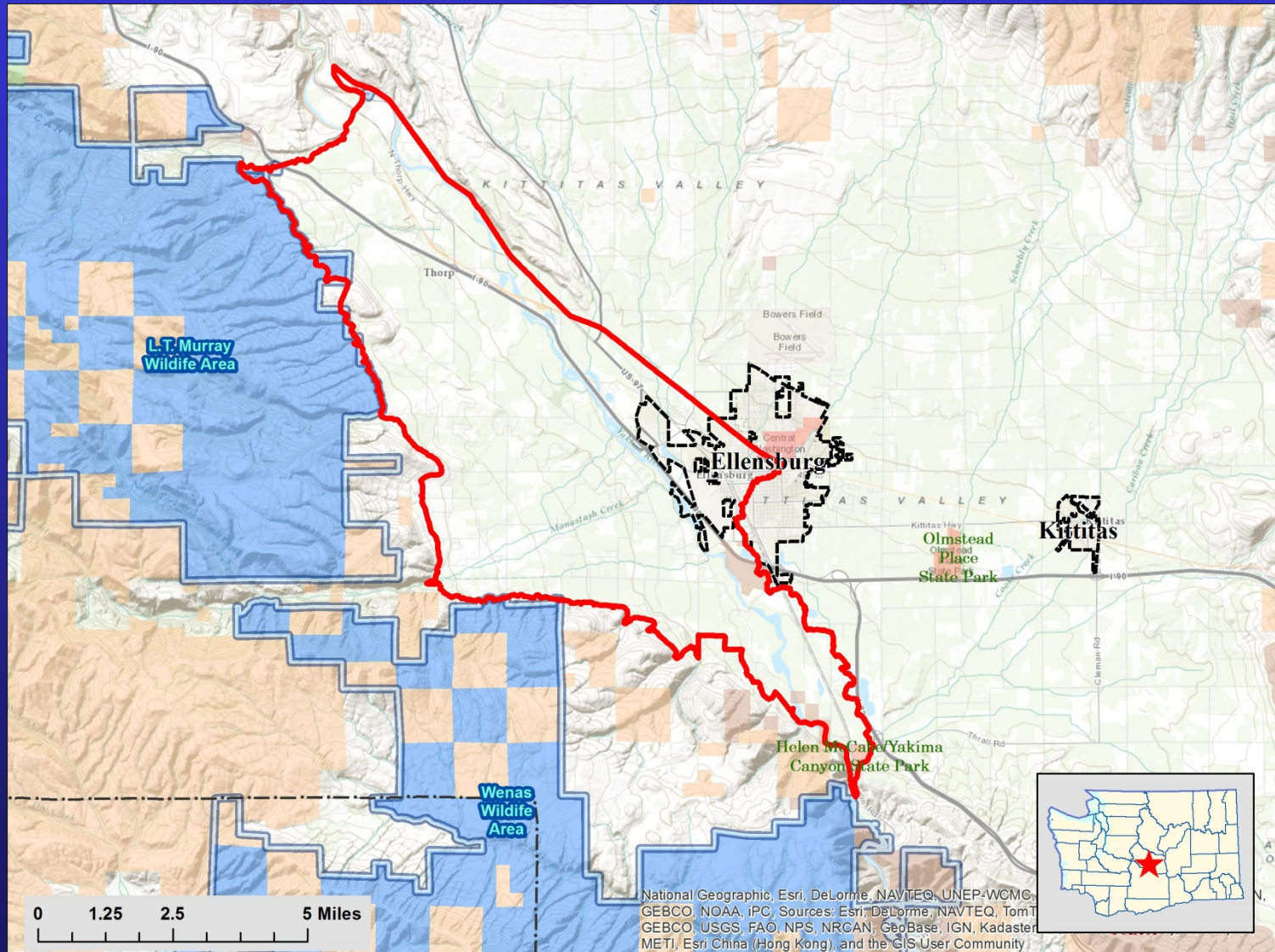
Deer Areas WAC 232-28-624

- Proposed new Deer Area in Chelan County
 - Deer Area 2017 Lake Chelan North
- Proposed new Deer Area in Kittitas County
 - Deer Area 3334 Ellensburg
- Proposed new Deer Area in Yakima County
 - Deer Area 3372 Sunnyside

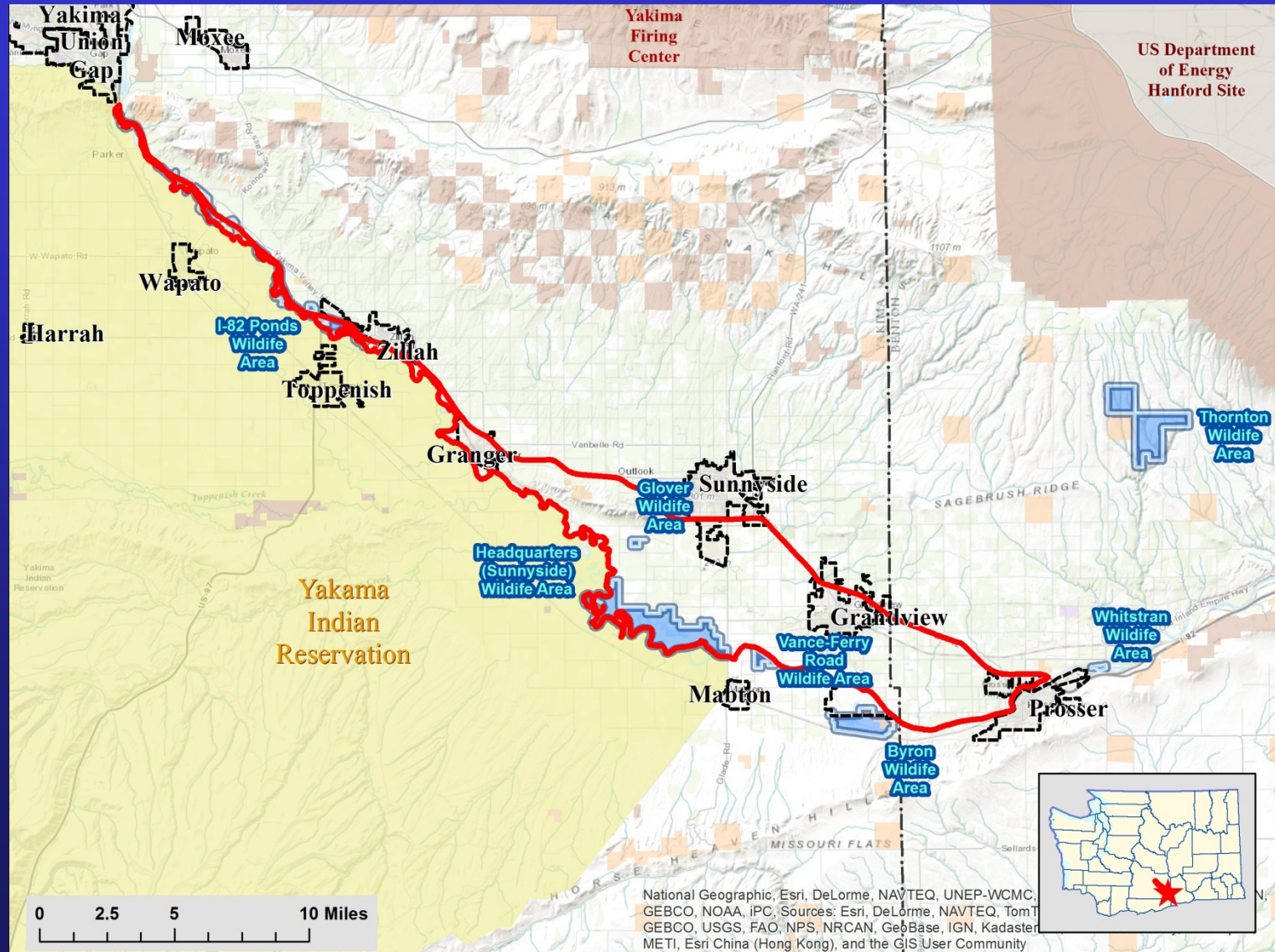
Deer Area 2017



Deer Area 3334



Deer Area 3372



US Department of Energy Hanford Site

Yakama Indian Reservation



National Geographic, Esri, DeLorme, NAVTEQ, UNEP-WCMC, GEBCO, NOAA, IPC, Sources: Esri, DeLorme, NAVTEQ, TomTOM, GEBCO, USGS, FAO, NPS, NRCAN, GeoBase, IGN, Kadaster, METI, Esri China (Hong Kong), and the GIS User Community



Deer Areas WAC 232-28-624

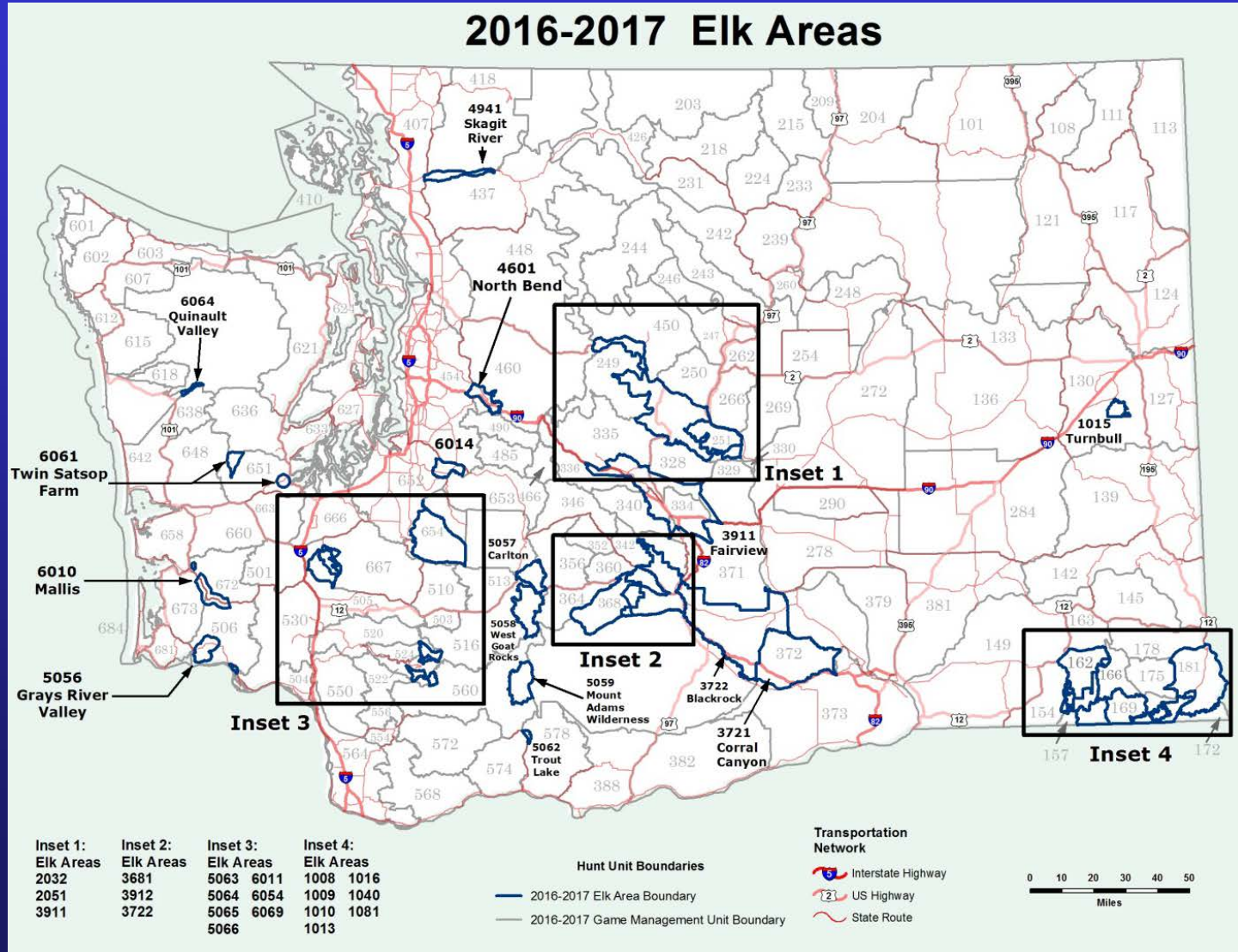
The new Deer Areas are designed to help mitigate agricultural damage at a scale smaller than the GMU level.



Questions on WAC 232-28-624



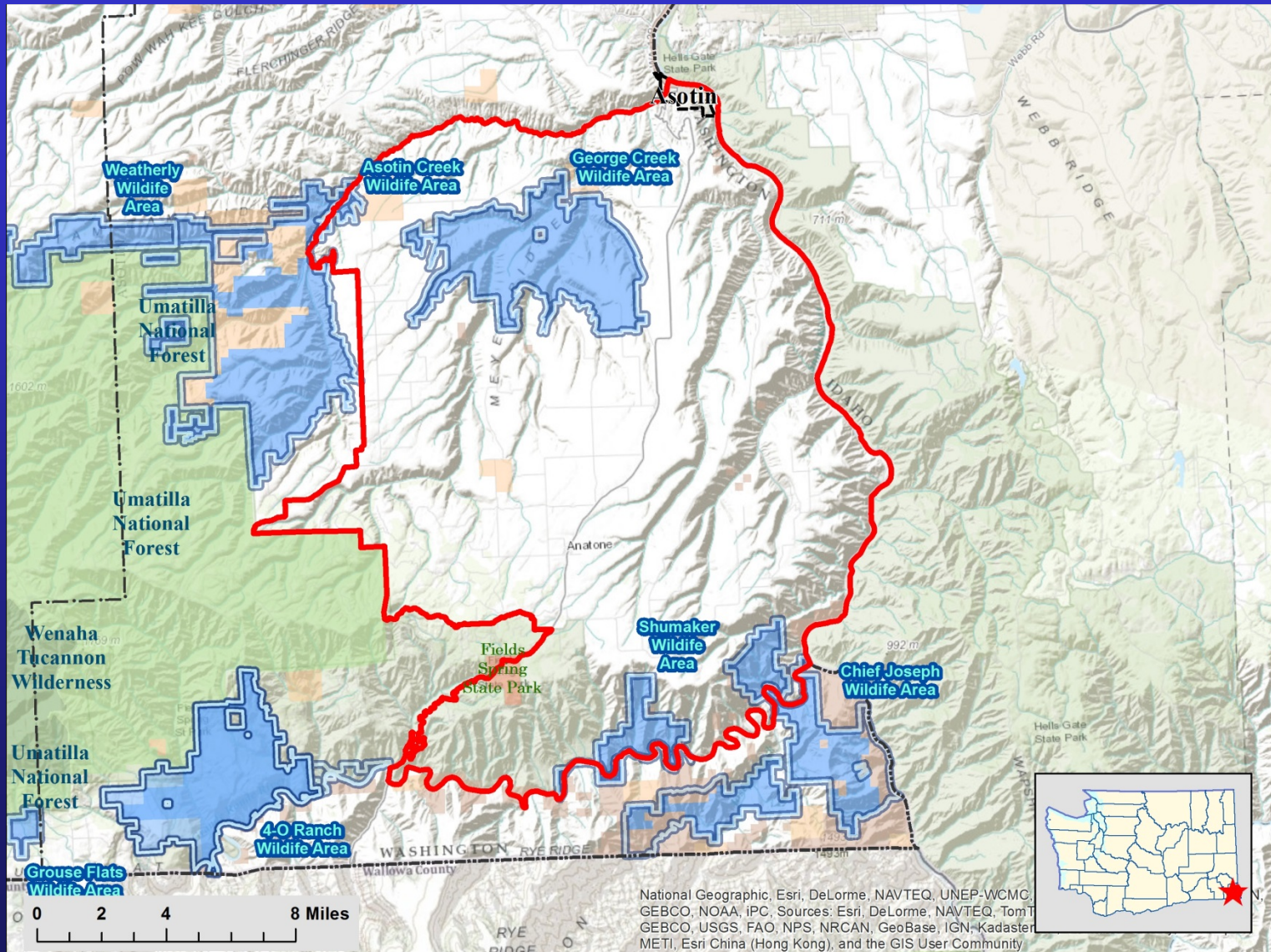
Elk Areas WAC 232-28-337



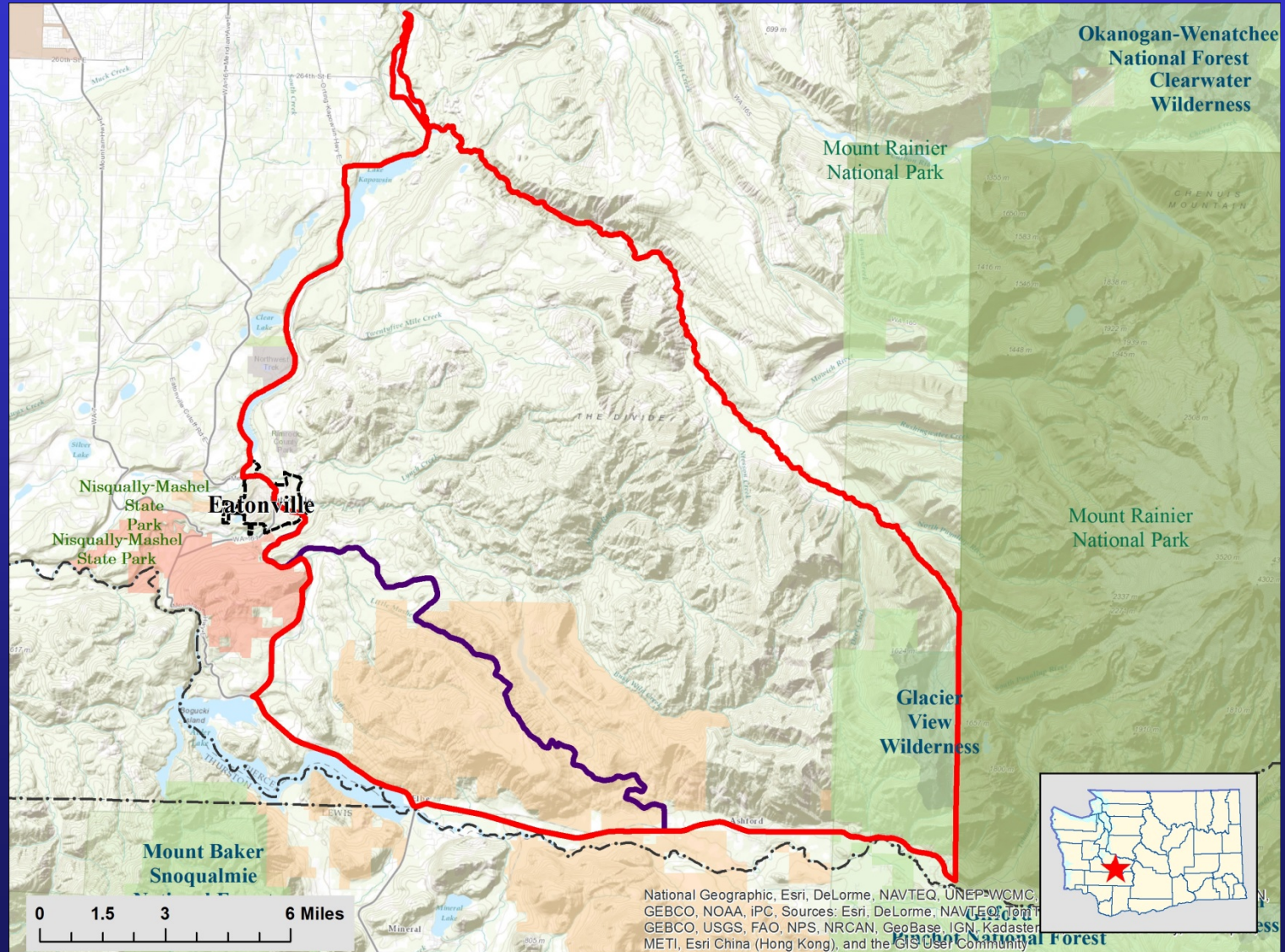
Elk Areas WAC 232-28-337

- Proposed new Elk Area in Asotin County
 - Elk Area 1081
- Proposed modification to Elk Area in Pierce County
 - Elk Area 6054 Puyallup River
- Proposed removal of Elk Area in Grays Harbor and Jefferson Counties
 - Elk Area 6063
- Proposed modification to Elk Area in Grays Harbor and Jefferson Counties
 - Elk Area 6064 Quinault Valley

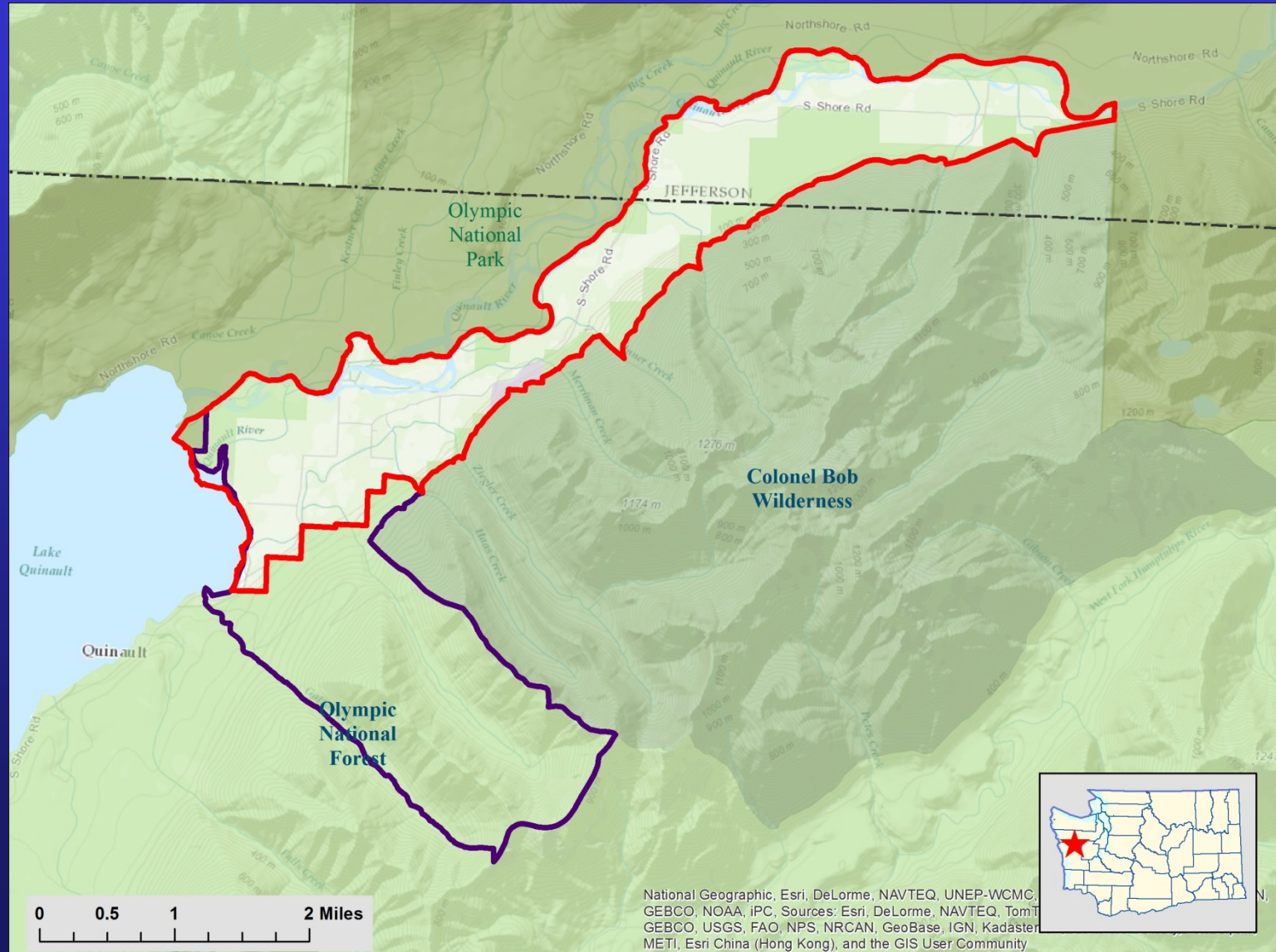
Elk Area 1081



Elk Area 6054



Elk Area 6064



Elk Areas continued

- Elk Areas are designed to help mitigate agricultural damage at a scale smaller than the GMU level
- Proposed removals are Elk Areas that are no longer needed
- Proposed modifications are adaptations to the changing wildlife conflict landscape



Questions on WAC 232-28-337

Special Closures and Firearm Restriction Areas

WAC 232-28-248

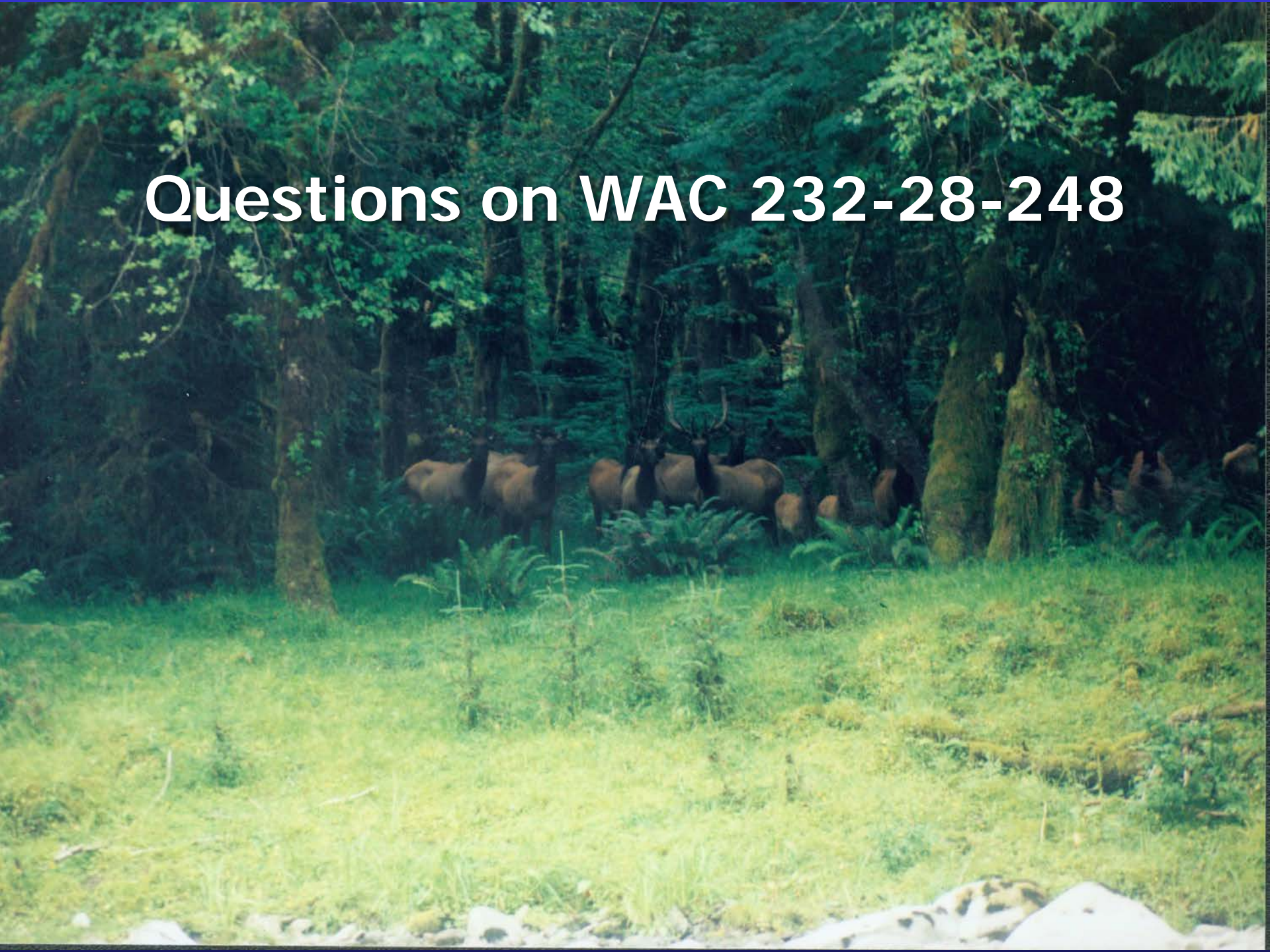
Proposed Changes

- Proposed adjustments are for a Firearm Restriction Area in Grays Harbor County
- The proposal clarifies that the restriction is intended to apply only during modern firearm deer and elk seasons

Direction and Rationale

- Firearm Restriction Areas maintain hunting as a management tool while taking into account safety and effectiveness
- Proposal clarifies the timing of the firearm restriction
- Maintains safety without being unnecessarily burdensome to landowners and small game hunters outside of modern firearm deer and elk seasons

Questions on WAC 232-28-248



Hunting by Persons With a Disability

WAC 232-12-828

Background

- Hunters with disabilities are permitted to shoot from their vehicles under RCW 77.32.238
- Enforcement and County Prosecutors requested clarification of the RCW
- Previous WAC language was removed in anticipation of RCW change that didn't happen
- The proposal reinstates language that was removed

Proposed Changes

While in a vehicle, hunters with a disability may not possess a loaded firearm or shoot unless:

- The vehicle is stopped and off the maintained portion of roadway
- The motor is turned off
- They have a disabled hunter vehicle placard



Rationale

- Previous WAC language was removed in preparation for the RCW change
- Currently hunters with disabilities do not have defined rules for shooting from a vehicle

Questions on 232-12-828

