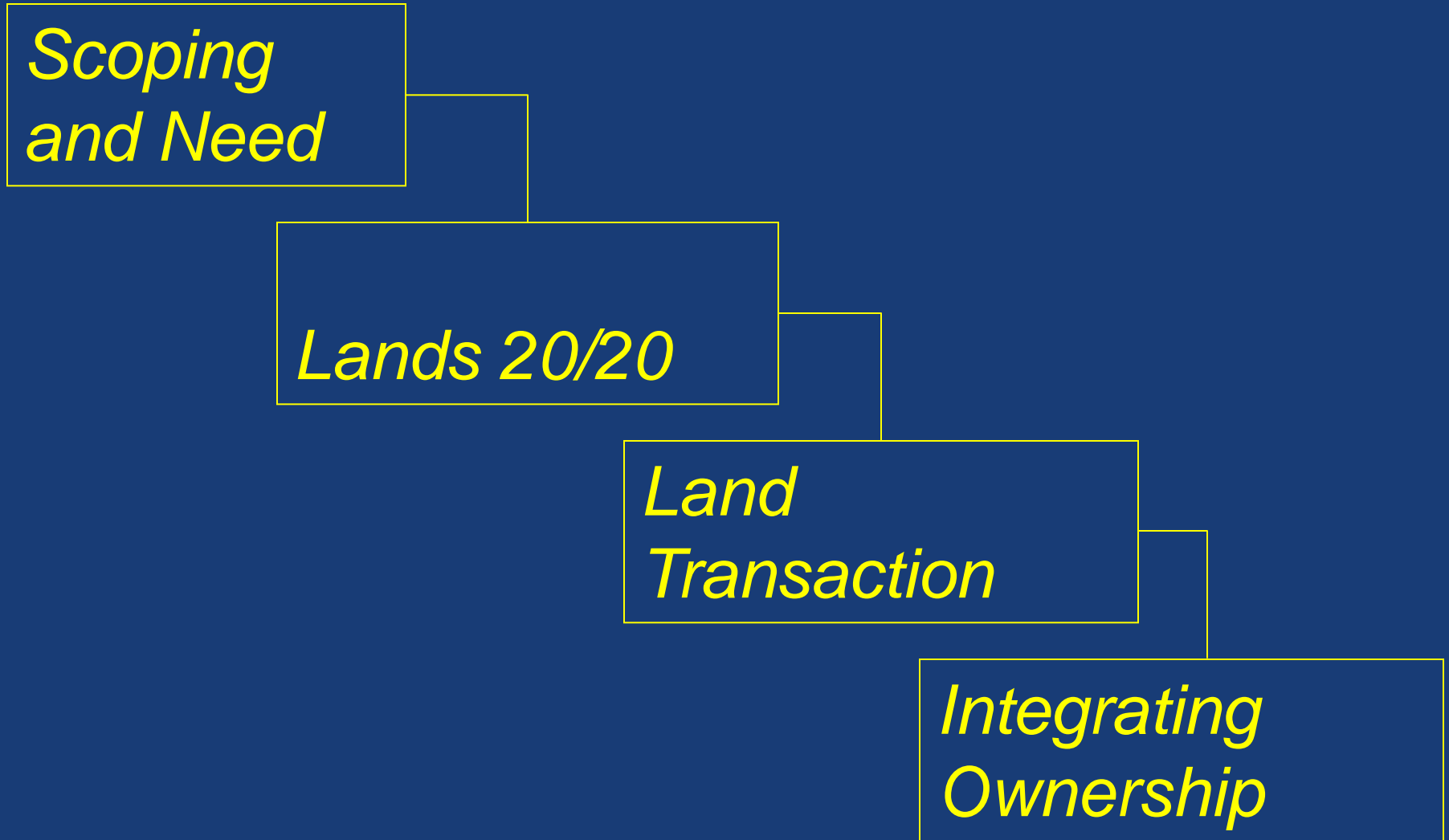


A large, gnarled tree with sparse green leaves stands in a grassy field. In the background, there are rolling hills and several wind turbines under a blue sky with scattered clouds.

Land Transactions

June 10 & 11, 2016

Acquisition Steps



Acquisition Steps

*Scoping
and Need*

```
graph TD; A[Scoping and Need] --> B[Land 20/20]; B --> C[Land Transaction]; C --> D[Integrating Ownership]; style C stroke:#ffff00
```

Land 20/20

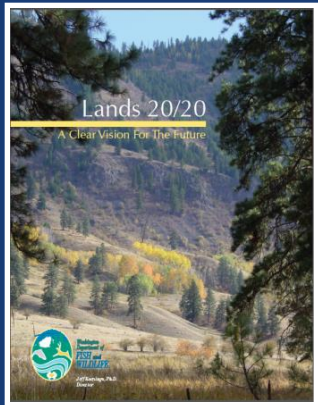
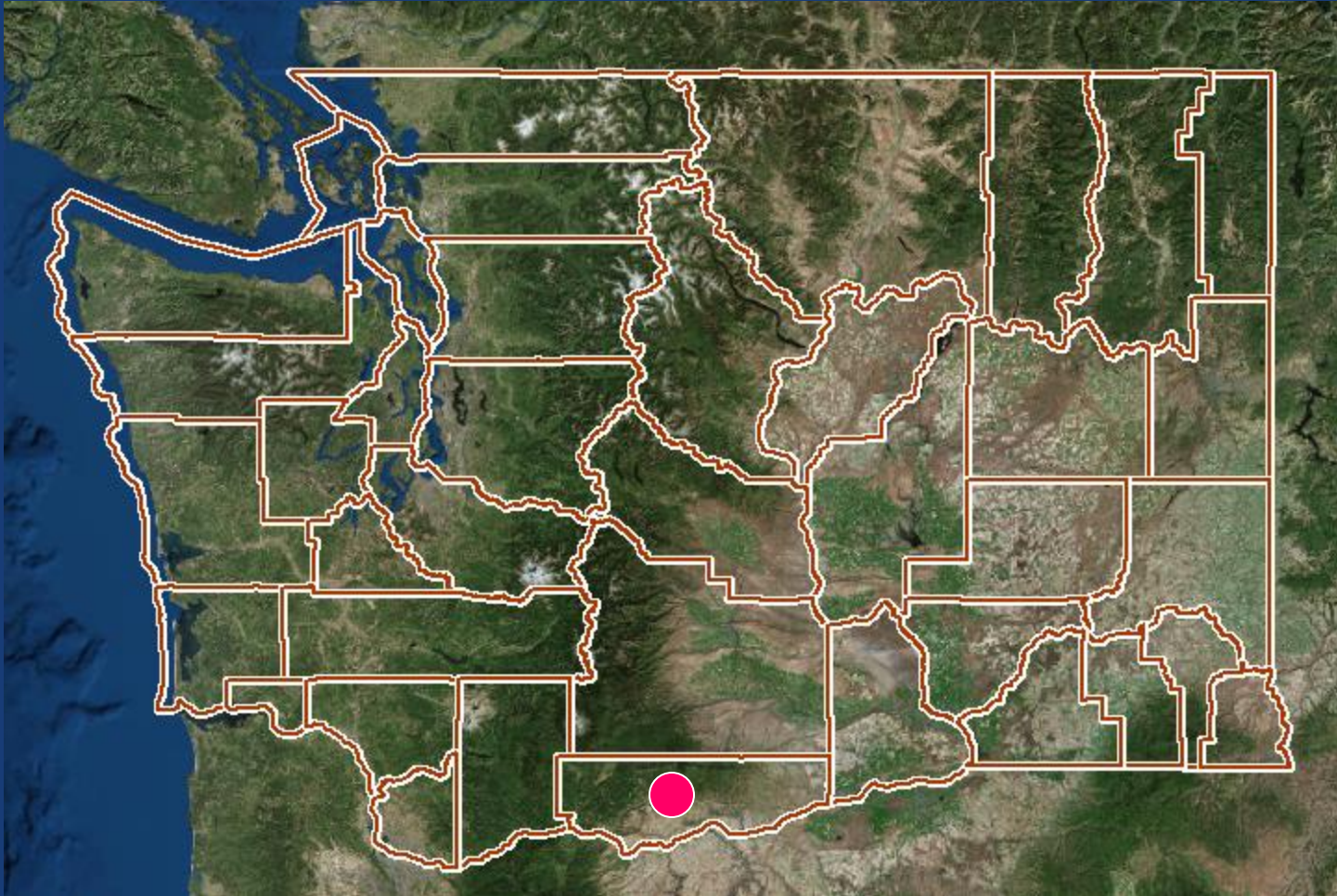
*Land
Transaction*

*Integrating
Ownership*

Land Transaction Stages

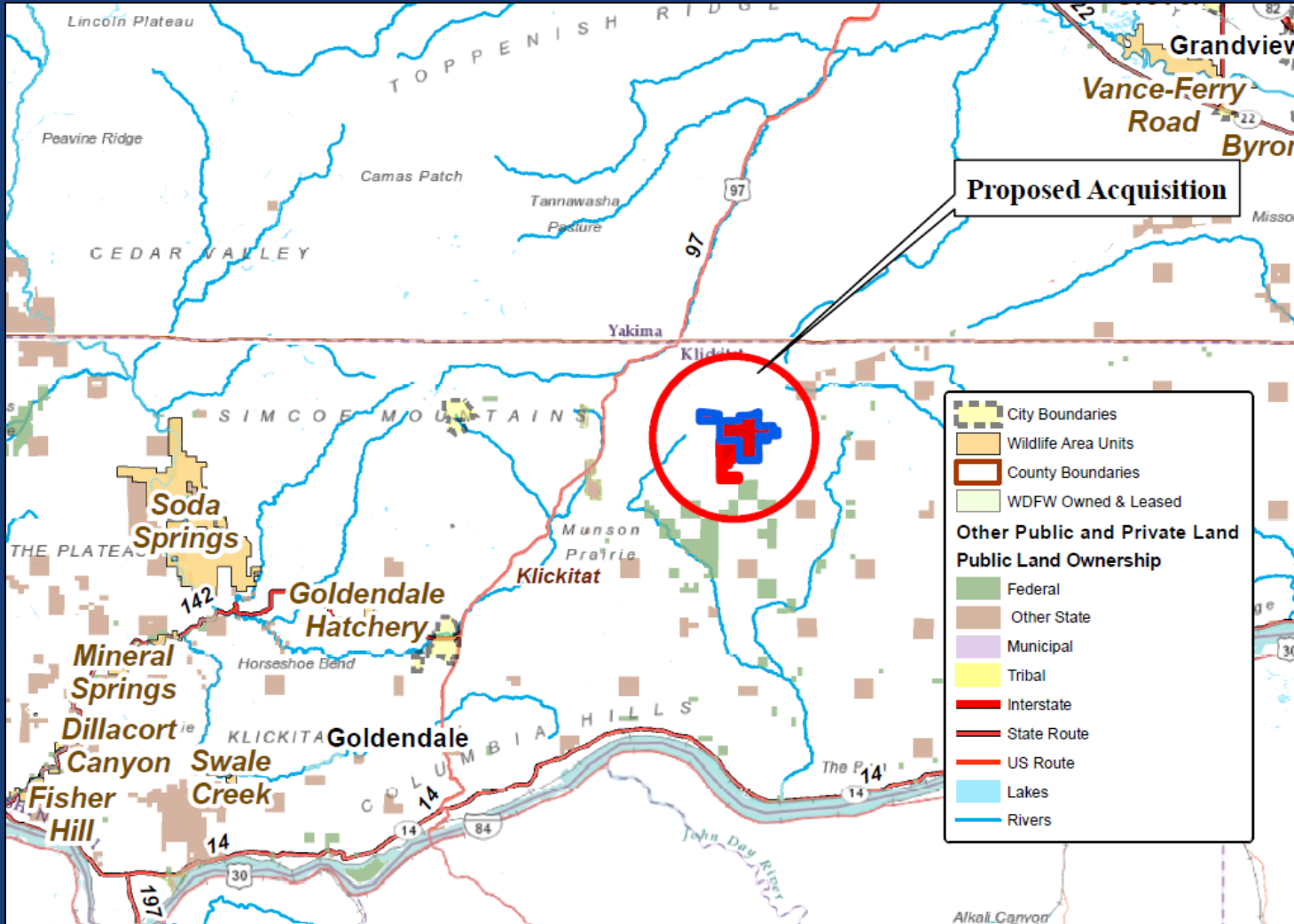
- *Appraisal*
- *Appraisal Review*
- *Negotiations*
- *Purchase Option*
- *Fish and Wildlife Commission Approval*
- *Close*

Simcoe Property Klickitat WLA Complex, Klickitat County



Simcoe Property

Klickitat WLA Complex, Klickitat County

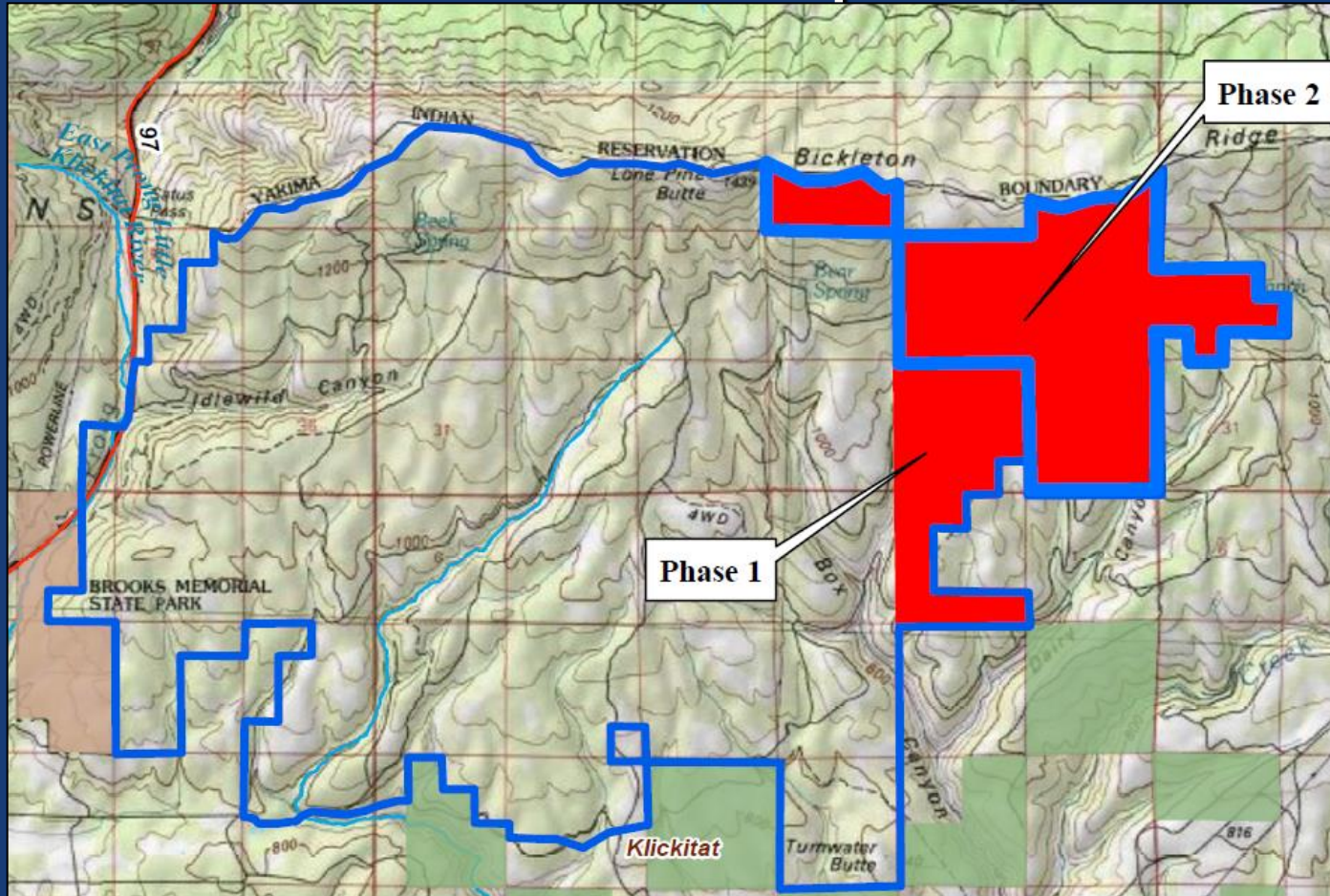


3,613 acres



Simcoe Property

Klickitat WLA Complex, Klickitat County



Funded by two
WWRP grants

Appraised Value
\$1,982,000



Simcoe Property

Klickitat WLA Complex, Klickitat County



Quality of Habitat



Simcoe Property Klickitat WLA Complex, Klickitat County



Simcoe Property

Klickitat WLA Complex, Klickitat County

Working Lands Partnership

Eastern Klickitat Conservation District



Central Klickitat Conservation District



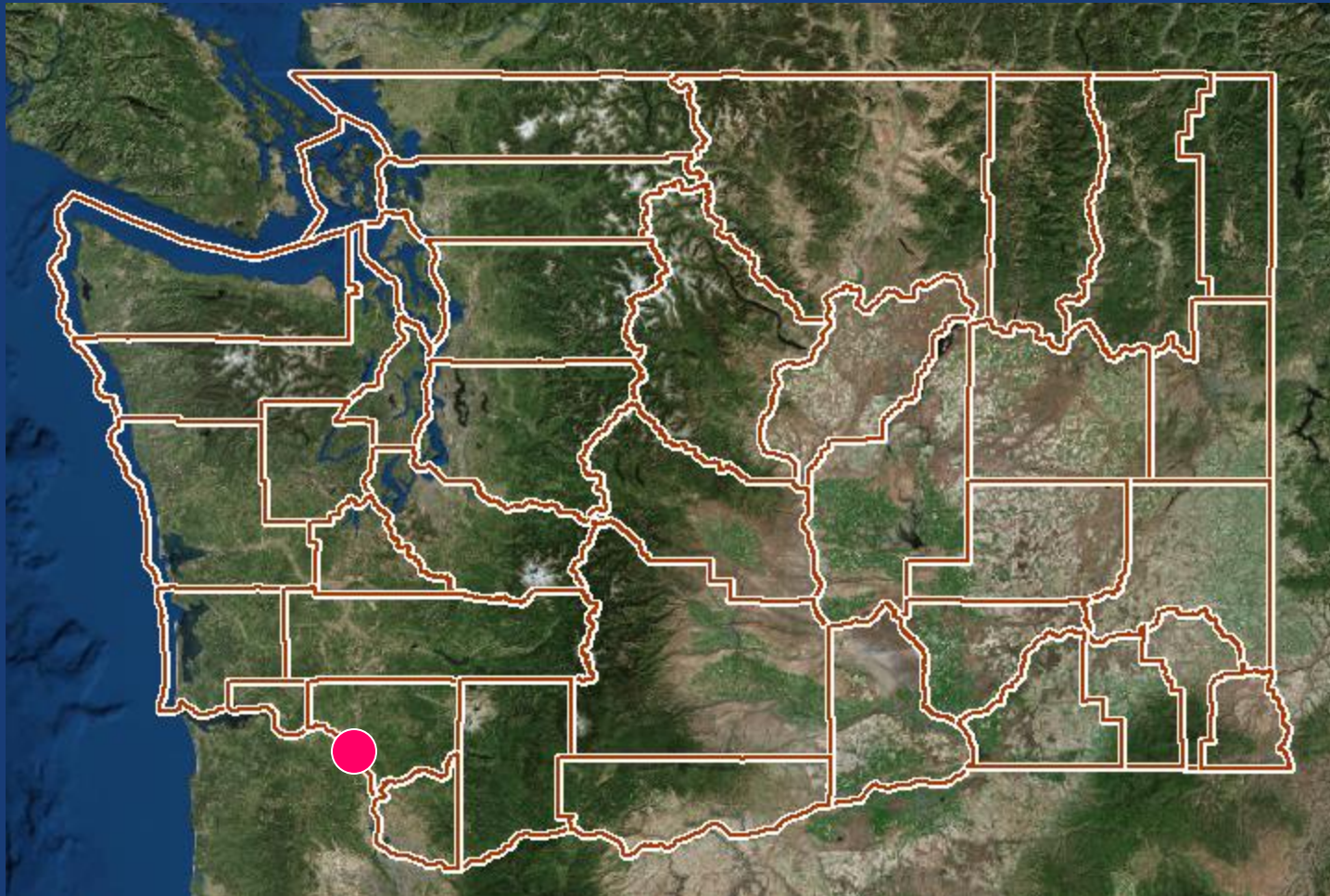
Simcoe Property

Klickitat WLA Complex, Klickitat County

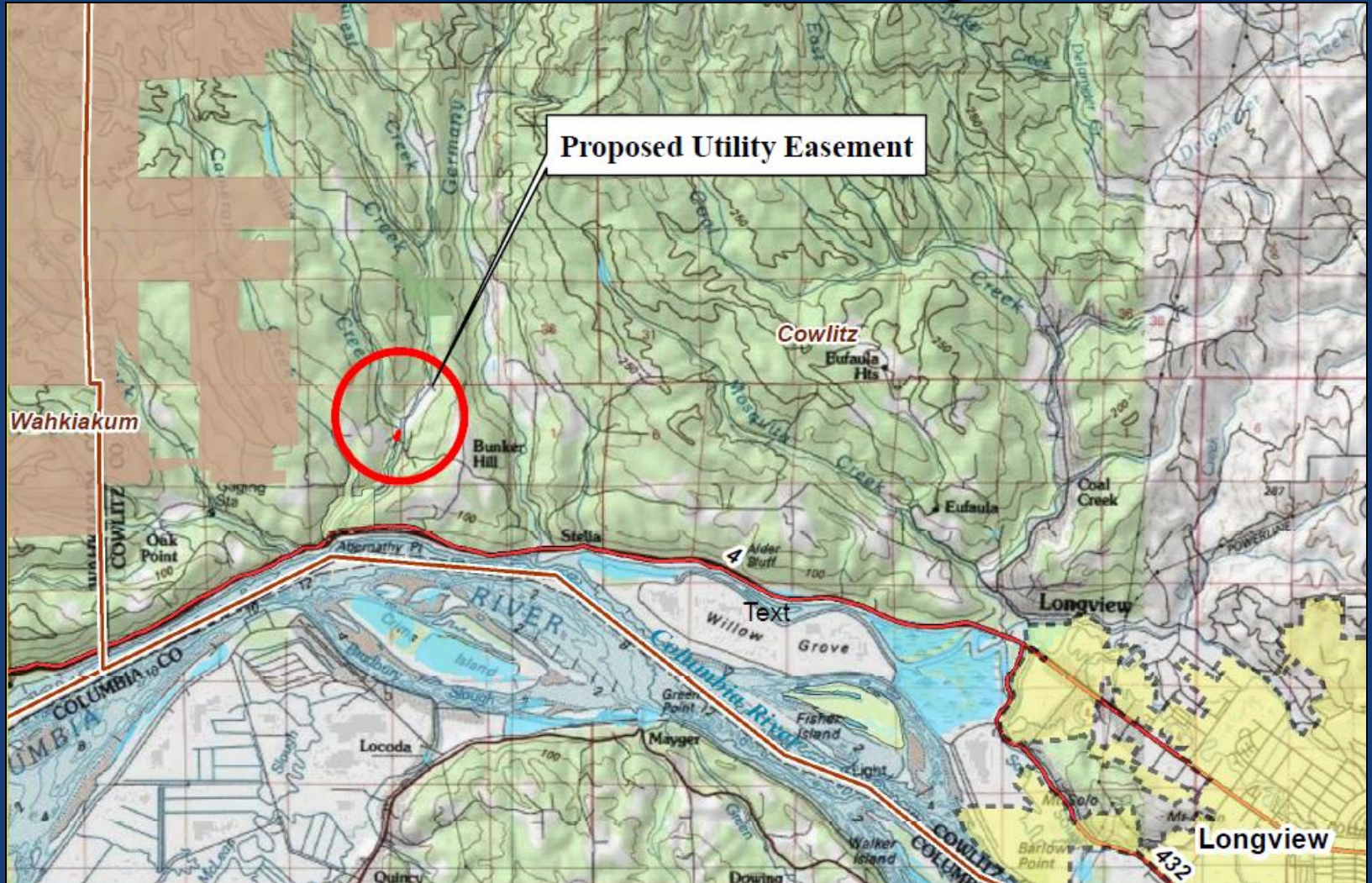


- Public hunting and fishing opportunity
- Estimated operation and maintenance annual costs: \$36,130
- Estimated annual Payment in Lieu of Property Tax: \$2,529

Abernathy Creek Easement Cowlitz County



Abernathy Creek Easement Cowlitz County



Abernathy Creek Easement Cowlitz County



**Utility Access
Easement**

10' x 90'

Abernathy Creek Easement Cowlitz County



PUBLIC COMMENT

Land Transactions

June 10 & 11, 2016