



Land Transactions

December 9 & 10, 2016

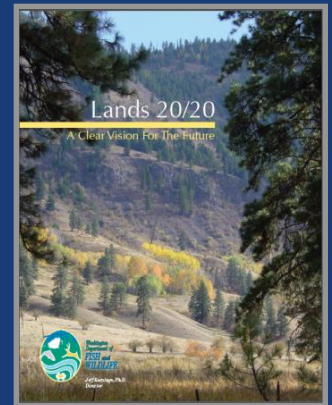
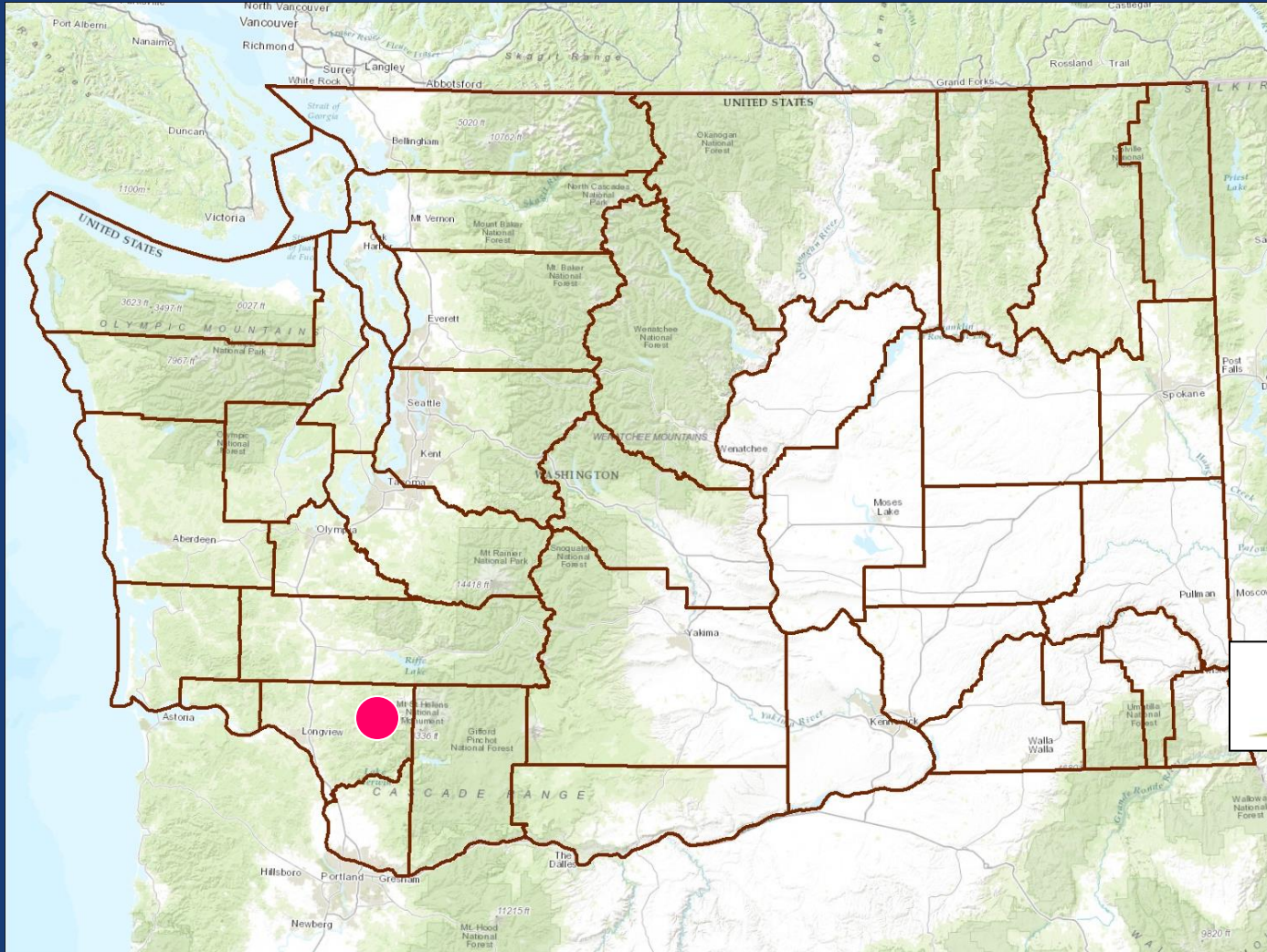
Merrill Lake Property
WDFW photo

Land Transaction Stages

- *Appraisal*
- *Appraisal Review*
- *Negotiations*
- *Purchase Option*
- *Fish and Wildlife Commission Approval*
- *Close*

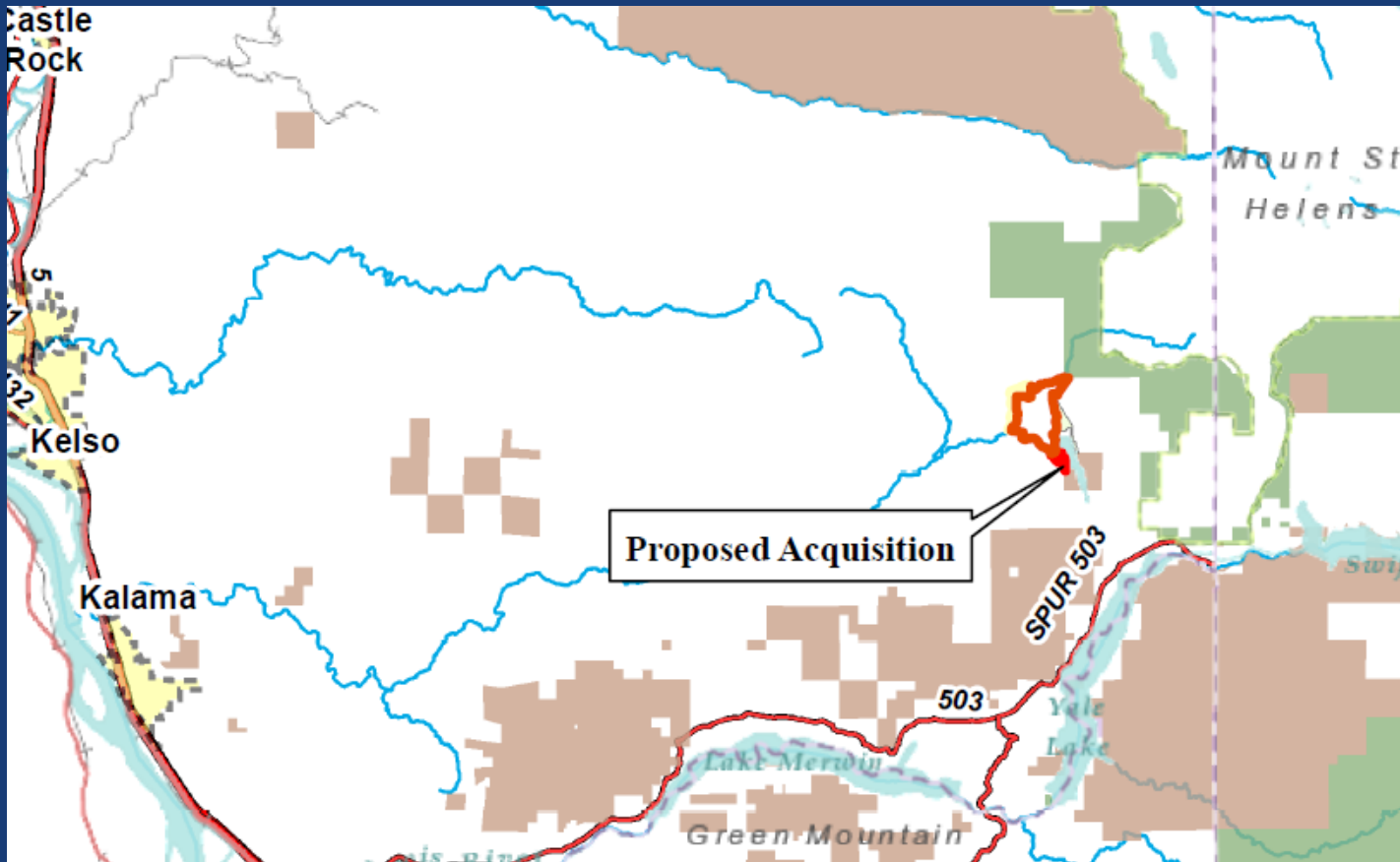
Merrill Lake LLC

Mt. St. Helens Wildlife Area, Cowlitz County



Merrill Lake LLC

Mt. St. Helens Wildlife Area, Cowlitz County

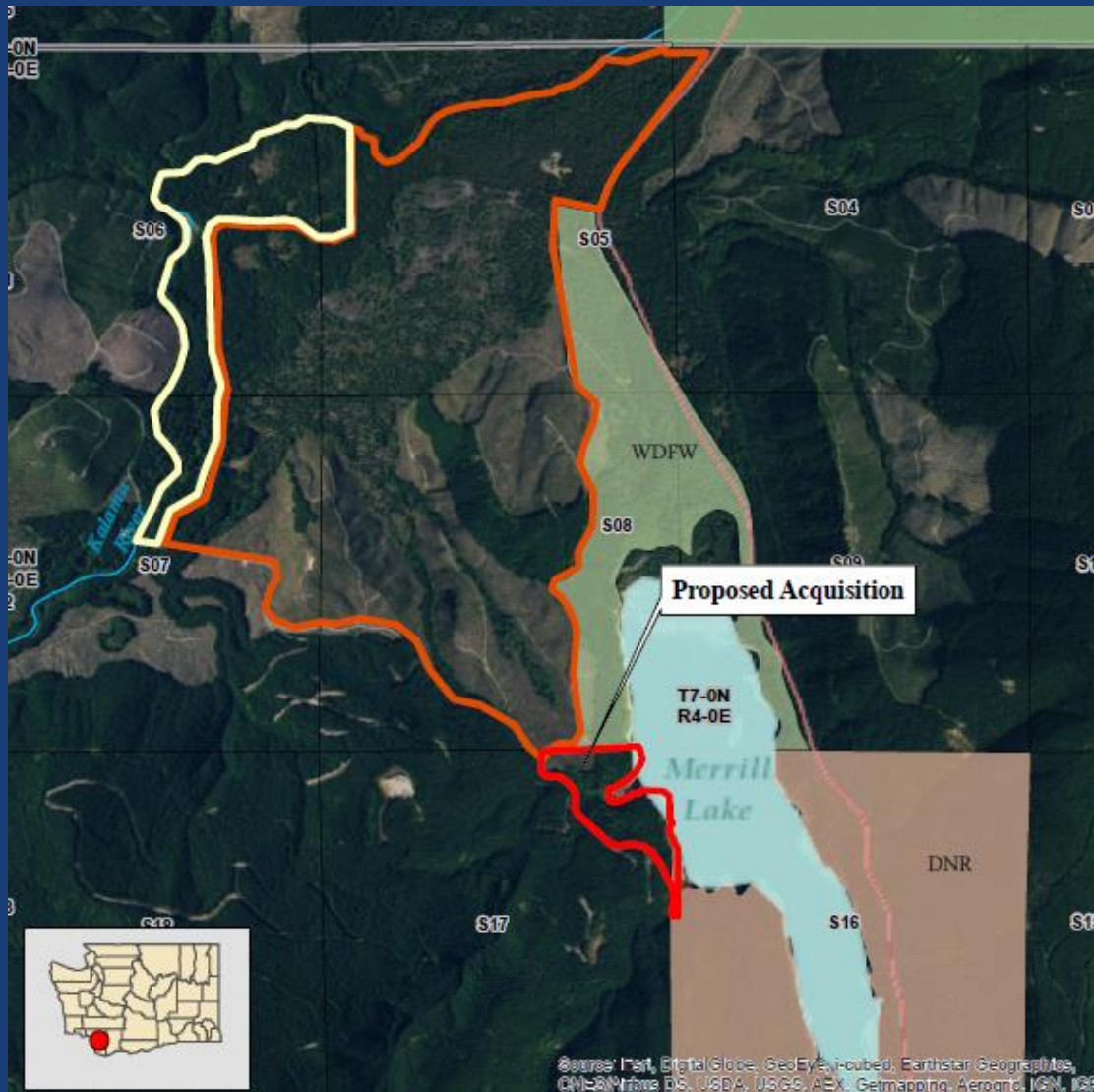


Phase 2
additional
~ 40.5 acres



Merrill Lake LLC

Mt. St. Helens Wildlife Area, Cowlitz County



Appraised Value
\$219,254



Photo credit
RMEF

Merrill Lake LLC

Mt. St. Helens Wildlife Area, Cowlitz County



Photos RMEF &
WDFW

Merrill Lake LLC

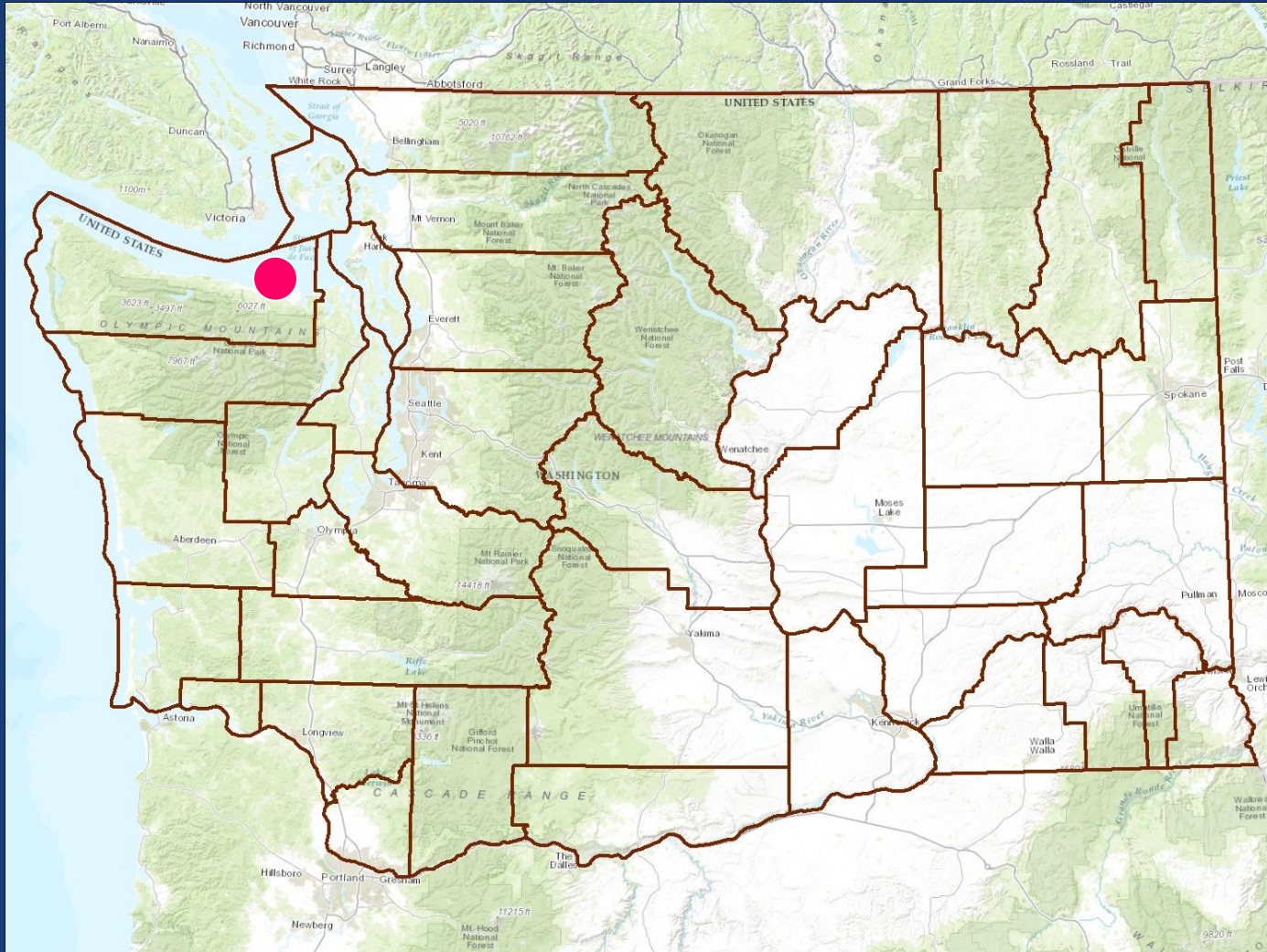
Mt. St. Helens Wildlife Area, Cowlitz County



Photos credit
RMEF

December 9 & 10, 2016
WDFW Commission Meeting

Three Crabs Right of Way North Olympic WLA, Clallam County



- ROW Exchange
- County Road Vacation

Three Crabs Right of Way

North Olympic WLA, Clallam County



Three Crabs Right of Way

North Olympic WLA, Clallam County



PUBLIC COMMENT

Merrill Lake
Photo WDFW

Land Transactions

November 4 & 5, 2016