

# REGION 2



## CHIEF CHRIS ANDERSON

Sgt. Dan Christensen- Detachment 14

Sgt. Danyl Klump- Detachment 15

Sgt. Mike Jewell- Detachment 16

# Regional Approach

(Tied to Strategic Objective #7)

- ▣ Region 2 adapted a Regional Approach to addressing major issues.
- ▣ This concept was necessary as a result of :
  - Limited/Reduced Staffing
  - Limited Resources
  - Competing Priorities

# Regional Approach:

## Big Game Hunting Seasons (Strategic Objective #1)



Late-Season Archery Deer



# Regional Approach:

## Salmon Enforcement (Strategic Objective #2)



Lake Wenatchee Sockeye



# Regional Approach: Smelt- Region 5 (Strategic Objectives 1 and 2)

▣ Utilize  
Regional



assist



▣

# Regional Approach:

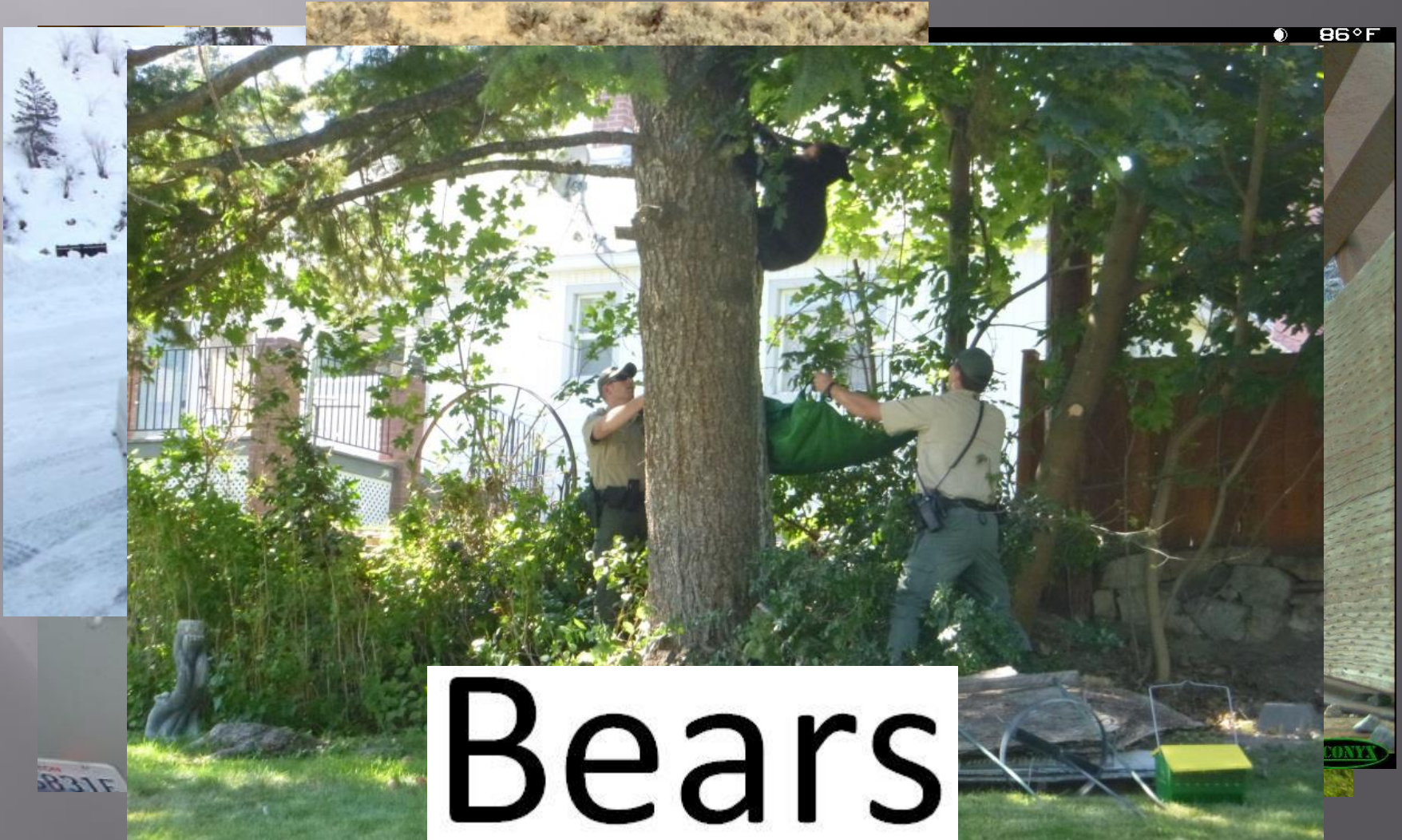
## AIS Prevention (Strategic Objectives 3 and 5)

- ▣ 440 hours focused on AIS education and prevention.
- ▣ 323 written AIS Inspections
- ▣ Regional emphasis patrol.
- ▣ Highway Check Stations



# Dangerous Wildlife

(Tied to Strategic Objective #6)



**Bears**



# Dangerous Wildlife

(Tied to Strategic Objective #6)

- ▣ Sep  
in C

- ▣ Mu

- ▣ Me

- ▣ Sep  
Om



e



# Dangerous Wildlife

(Tied to Strategic Objective #6)



**Cougars**



# Dangerous Wildlife

(Tied to Strategic Objective #6)





# Public Land Protection

(Tied to Strategic Objectives 4 and 6)





# Public Land Protection

(Tied to Strategic Objectives 4 and 6)





# Public Land Protection

(Tied to Strategic Objectives 4 and 6)





# Public Land Protection

(Tied to Strategic Objectives 4 and 6)



## **WDFW NEWS RELEASE**

Washington Department of Fish and Wildlife  
600 Capitol Way North, Olympia, WA 98501-1091  
<http://wdfw.wa.gov/>

June 8, 2016

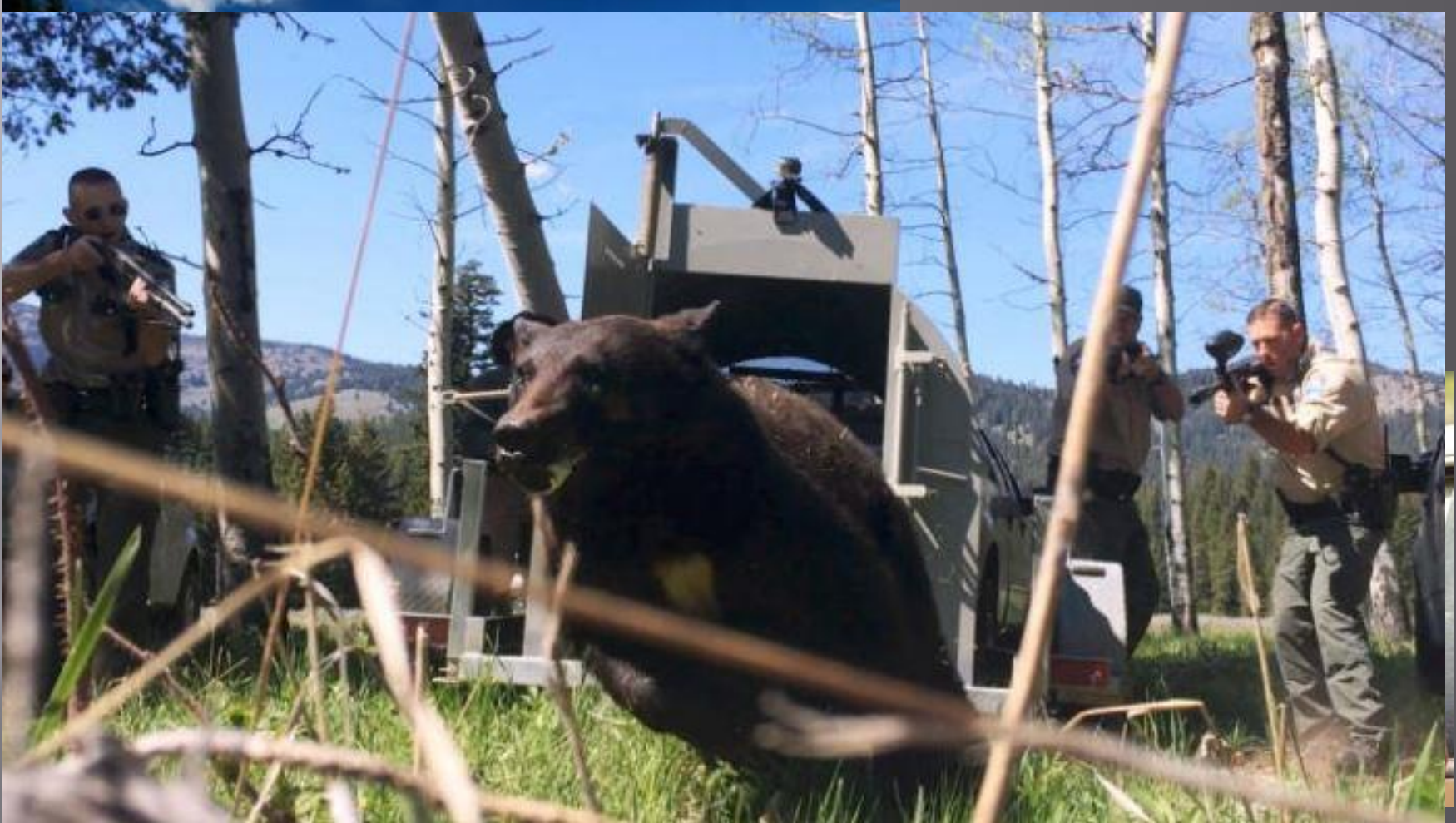
Contact: Jim Brown, 509-754-4624, Ext. 219

### **Fireworks prohibited year-round on WDFW lands**

OLYMPIA – With wildfire season already underway, the Washington Department of Fish and Wildlife (WDFW) rem prohibited year-round on all 33 WDFW wildlife areas and 700-plus water access sites

# Public Outreach

(Tied to Strategic Objective #5)





# Boating Under the Influence (BUI) Enforcement

(Tied to Strategic Objectives 6 and 7)

- E
- 4
- a
- E



tions



# Future Goals/Regional Focus

- ▣ INCREASE STAFFING!!!!
- ▣ New/Additional Fund Sources.
- ▣ Succession Planning