



Land Transactions

January 13 & 14, 2017

Acquisition Steps

Scoping
and Need

Lands 20/20
and
Funding

Land Transaction

Integrating
Ownership

Acquisition Steps

Scoping
and Need

Lands 20/20
and
Funding

Land
Transaction

Integrating
Ownership

Land Transaction Stages

- Appraisal
- Appraisal Review
- Negotiations
- Purchase Option
- Fish and Wildlife Commission Approval
- Close

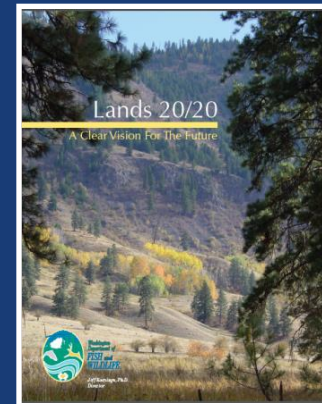
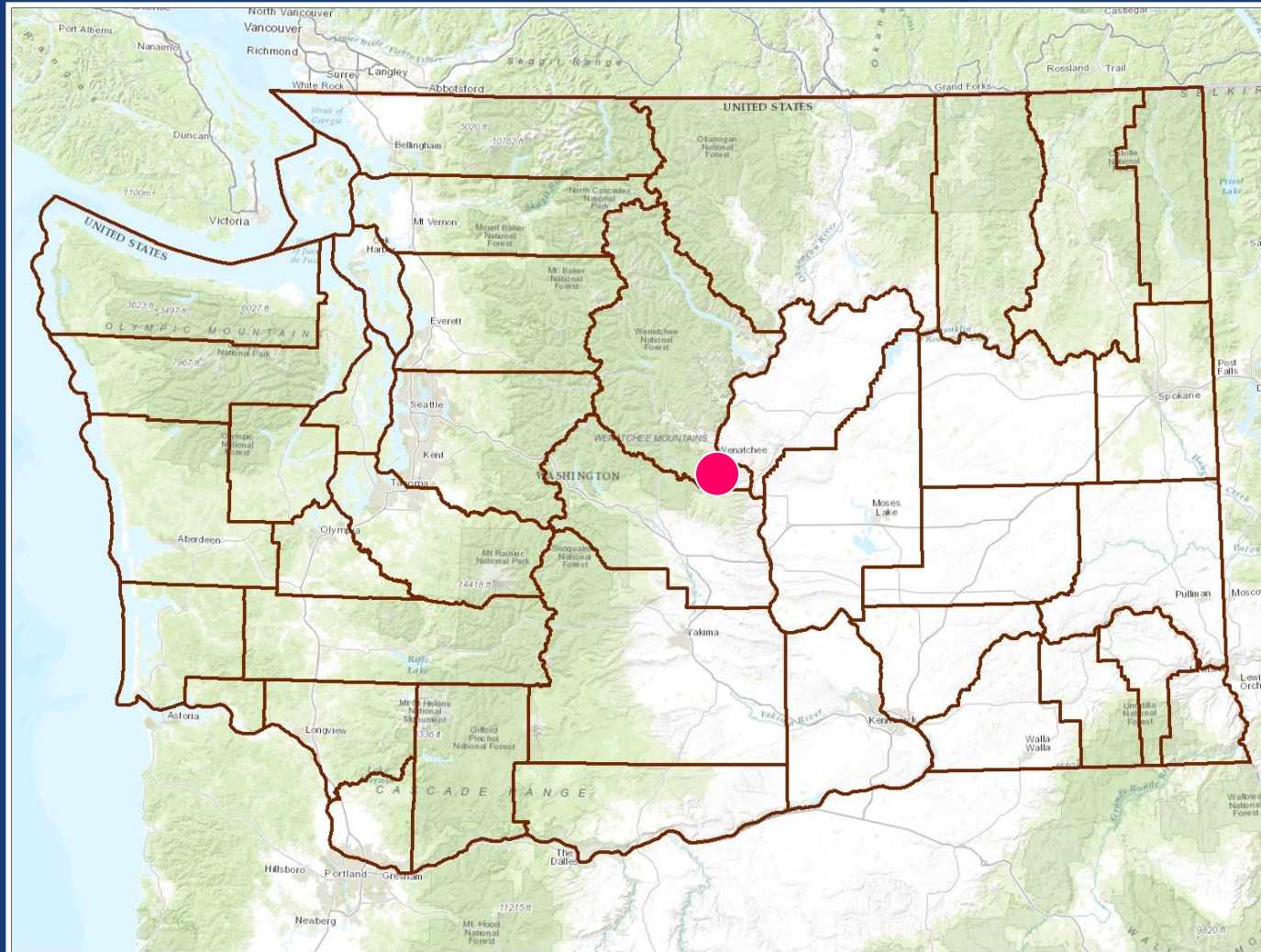
Land Transaction Appraisal

- Appraisal Required by RCW 8.26.180
- Appraisal Standards
- Independent Fee Appraisers
- Appraisal Review

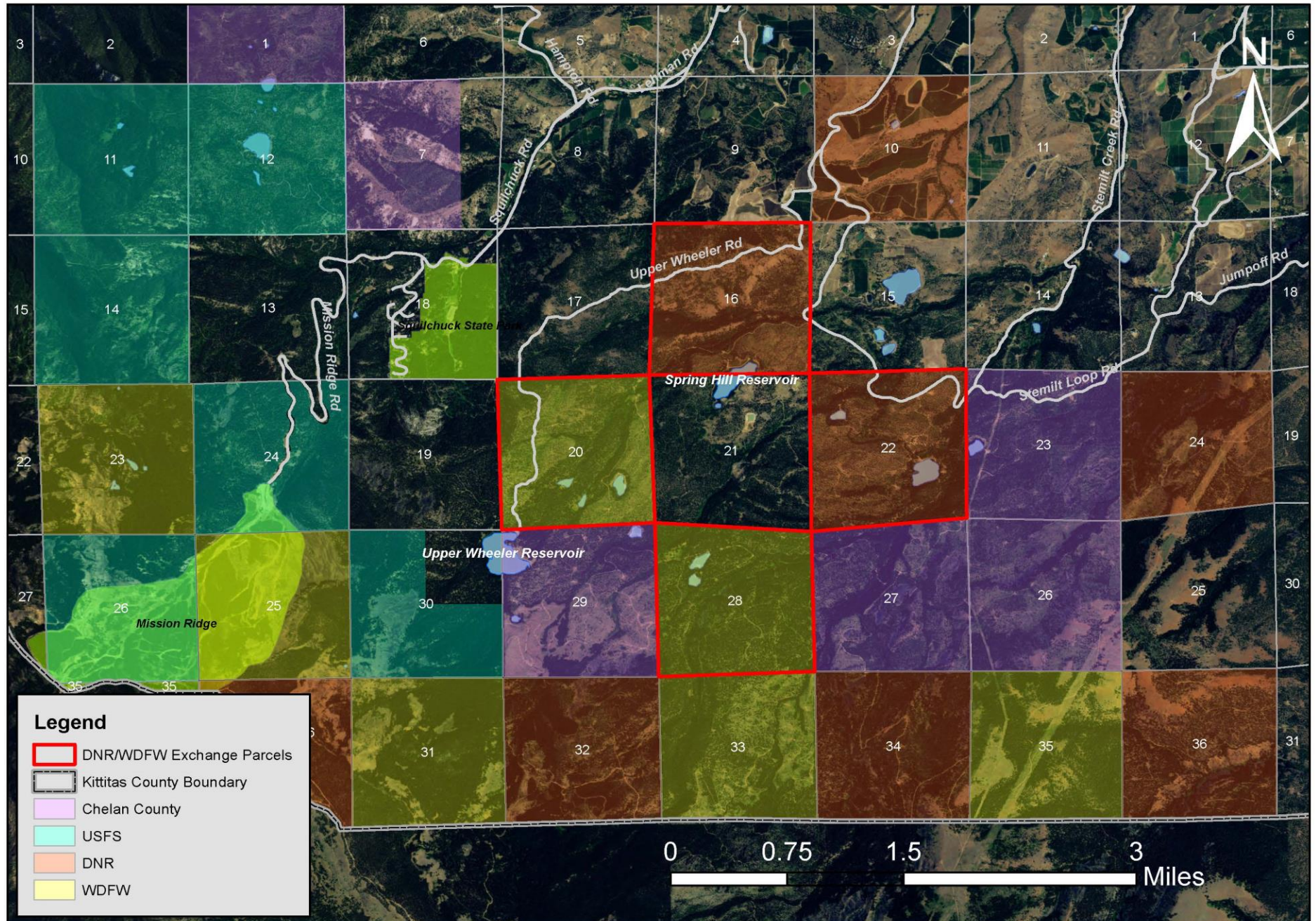
Land Transaction

- Just Compensation Established
- Negotiations Begin
- Purchase or Option Signed
- Fish and Wildlife Commission Approval
- Close

Stemilt Property Chelan County

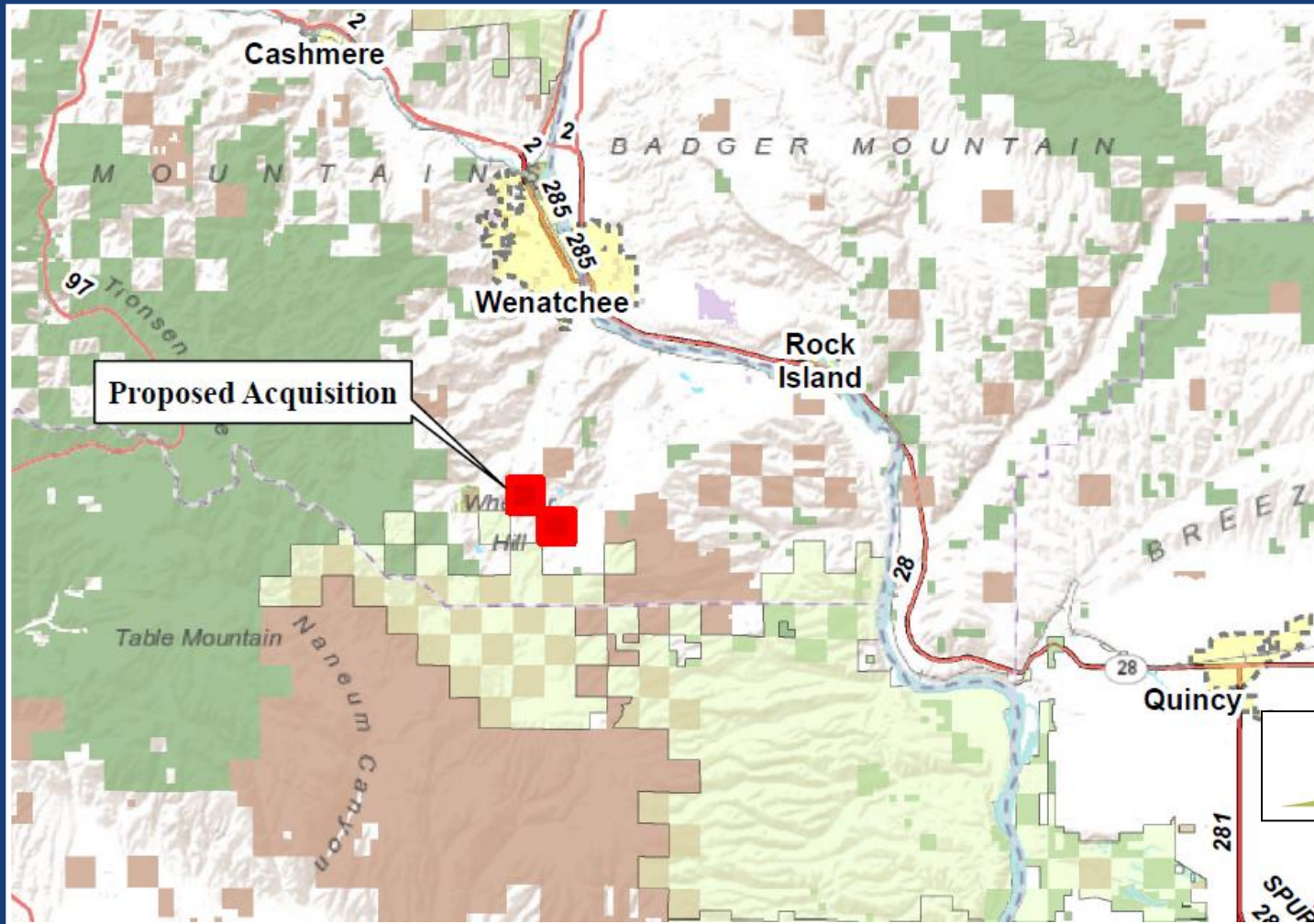


Stemilt Partnership Land Acquisition Initiative



Data credits: Chelan County GIS

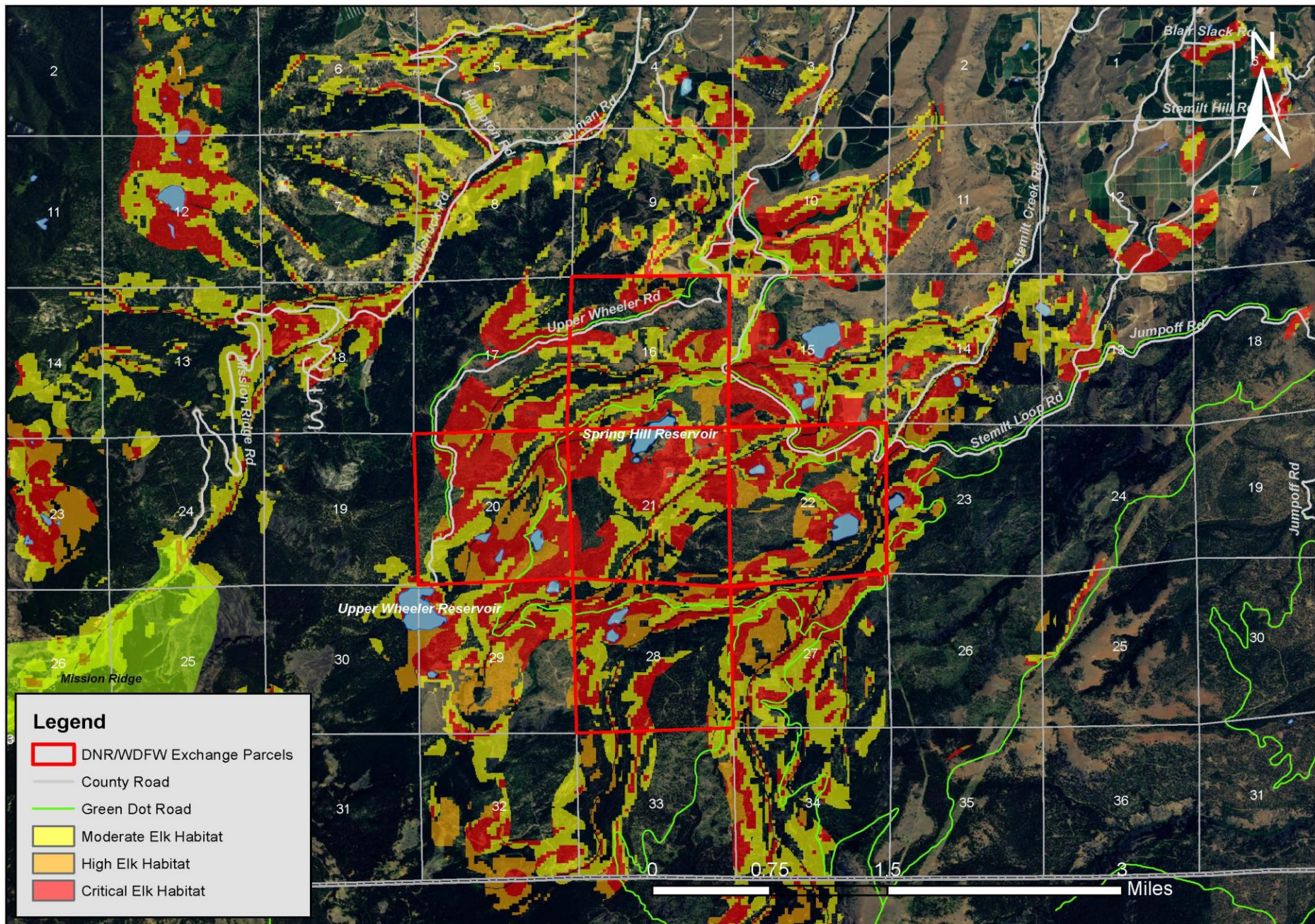
Stemilt Property Chelan County



1276 +/- acres
for
\$1,950,000



Colockum Elk Herd Summer Habitat as Assessed by WDFW

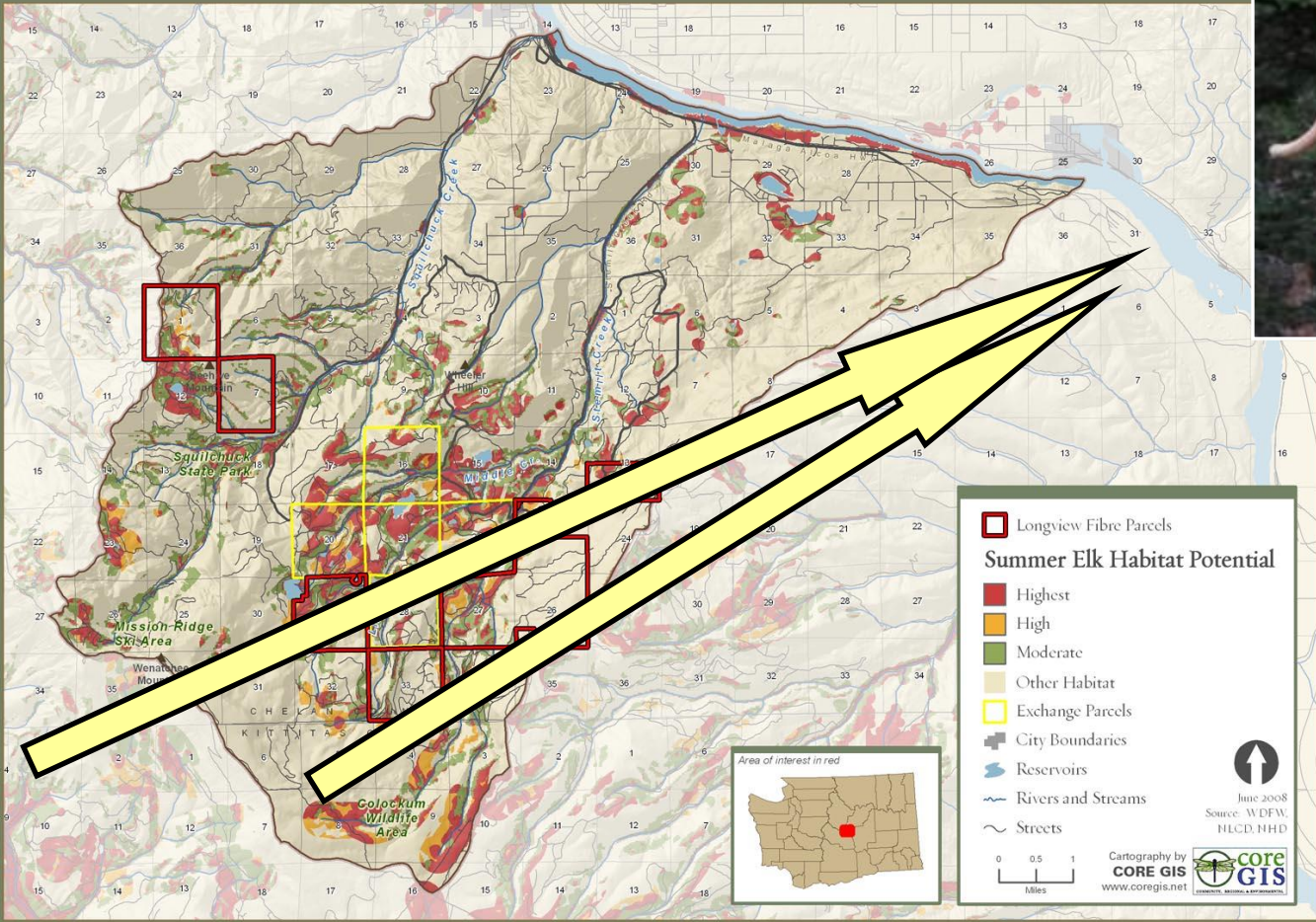


Data credits: Chelan County GIS, WDFW, Stemlit Vision Document

Stemilt Property



Summer Elk Habitat Potential--Model Results Stemilt-Squilchuck Community Vision



Stemilt Property Chelan County

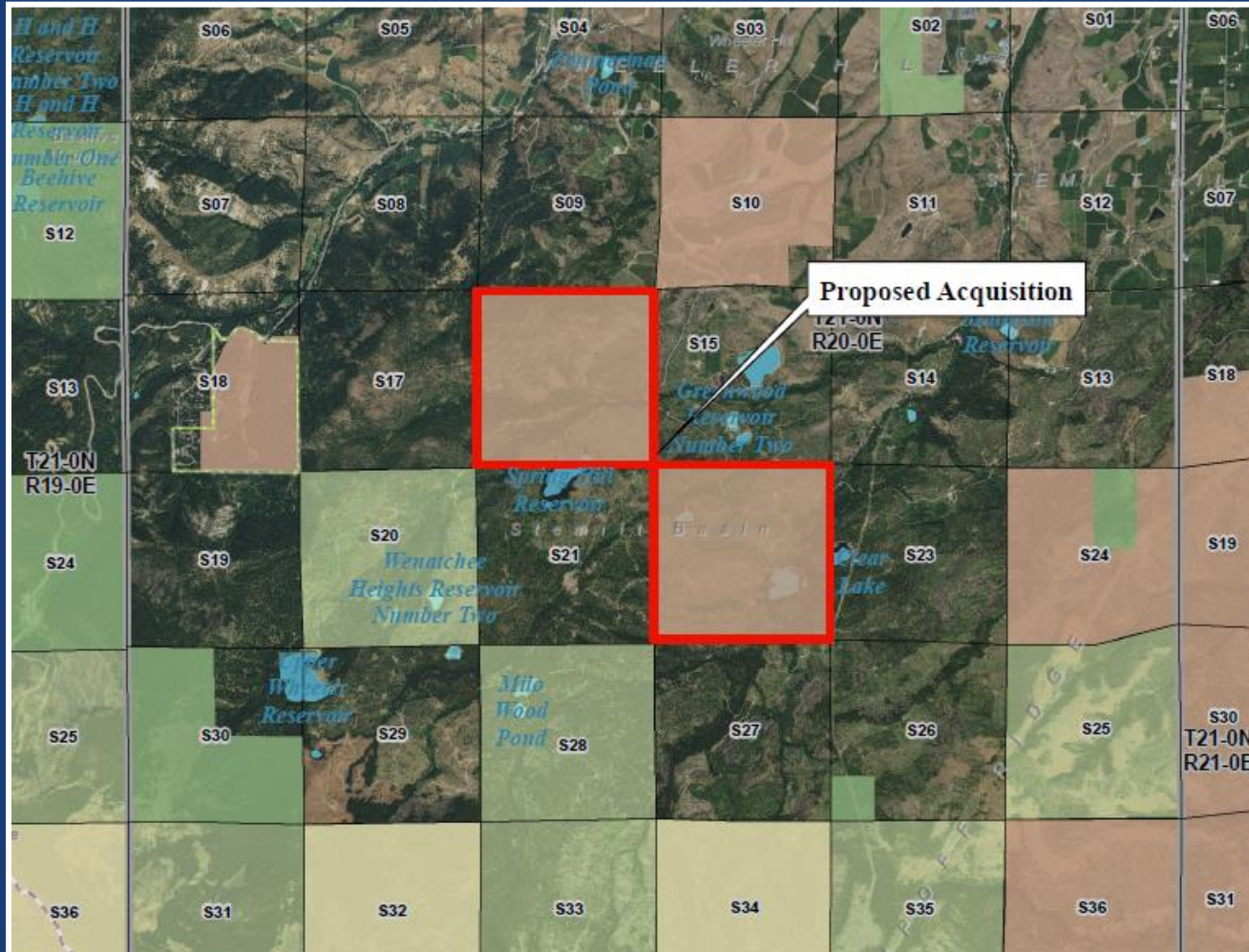


Spotted Owl



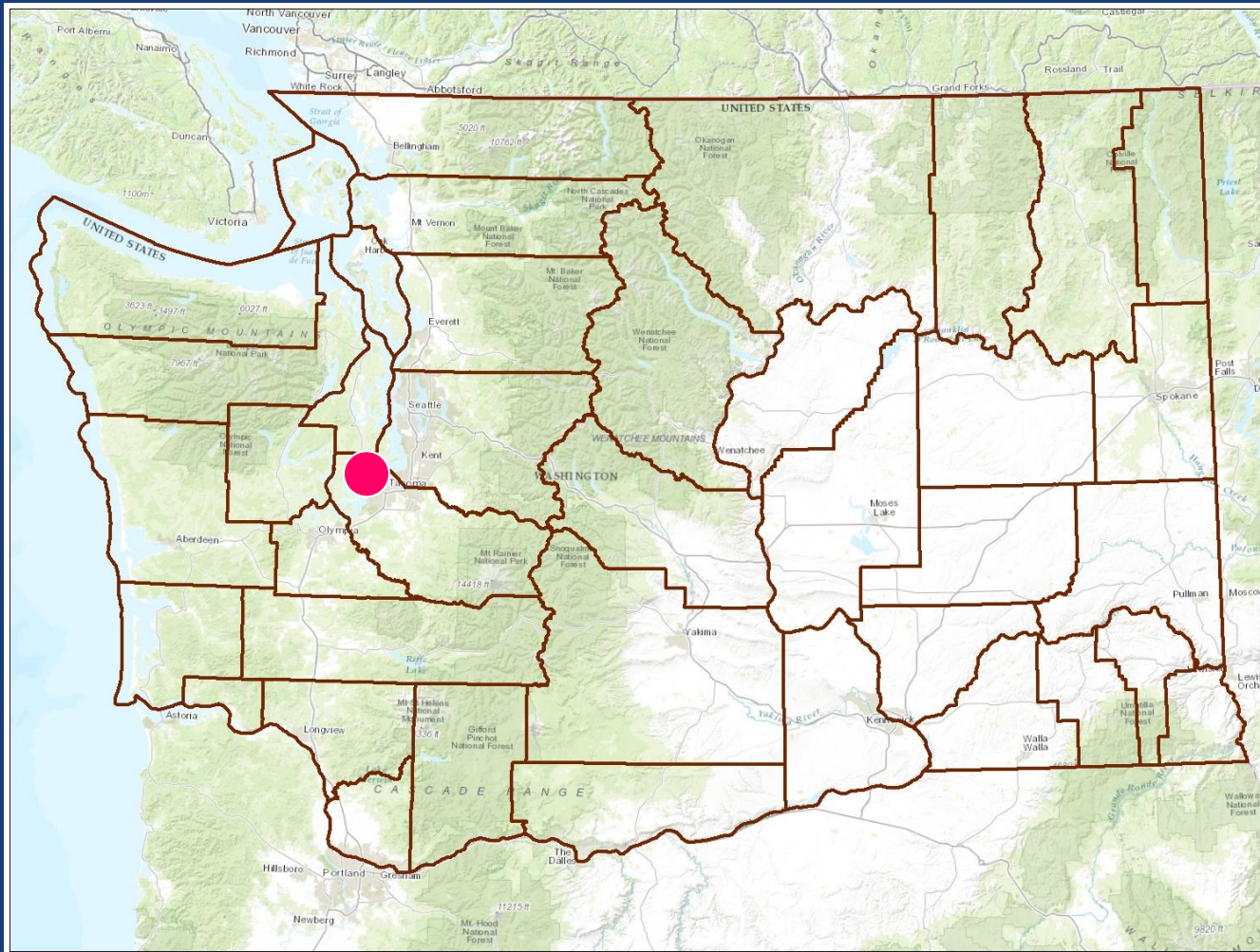
Pileated Woodpecker

Stemilt Property Chelan County



Estimated O & M
\$16,640 annually

Anderson Island Transfer Pierce County



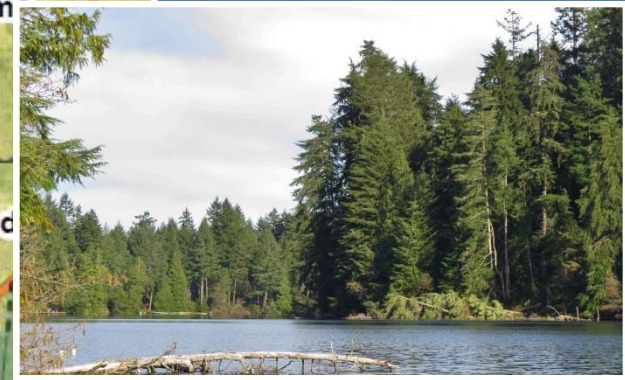
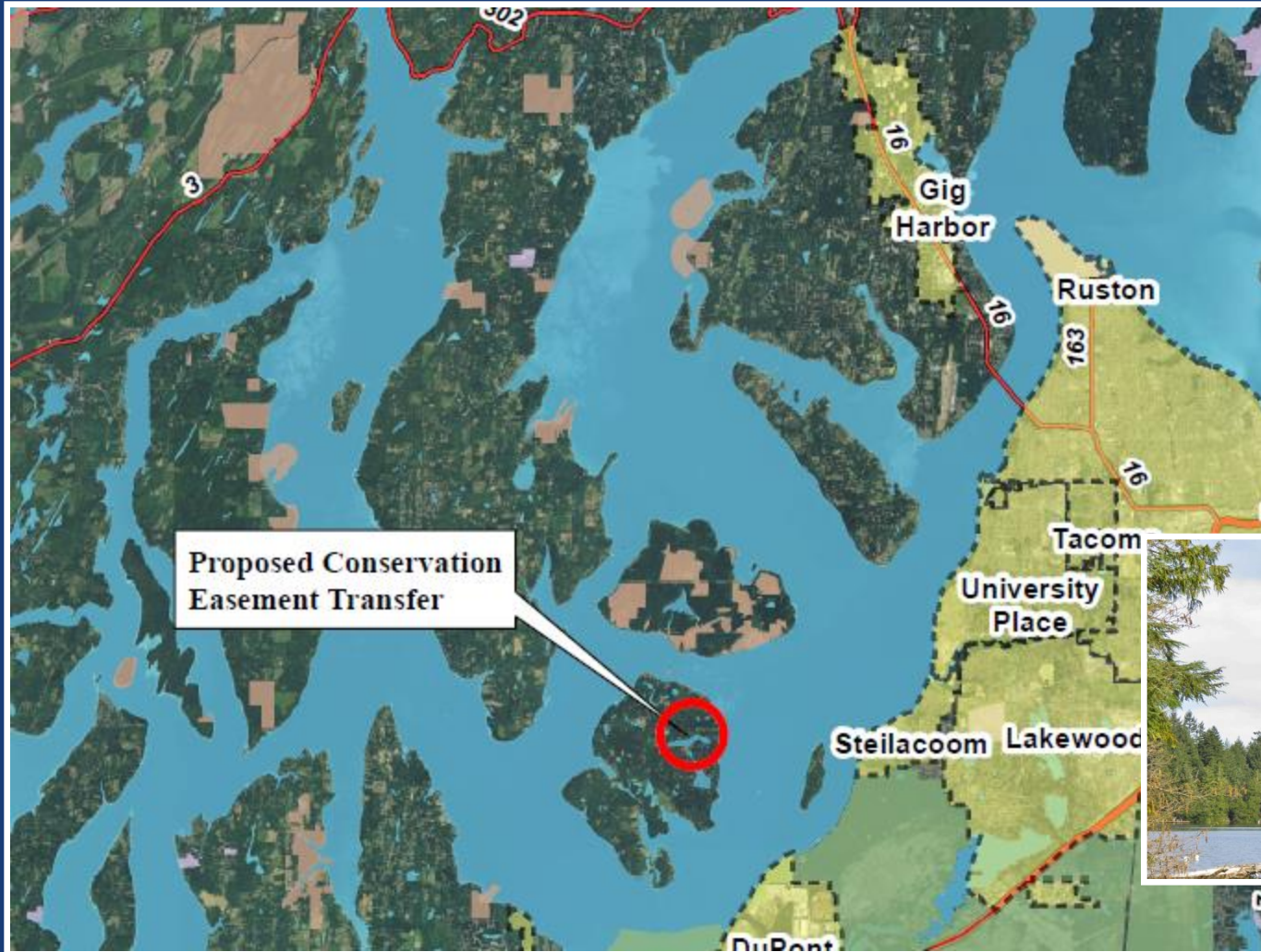
Conservation
Easement
Transfer

Anderson Island Park
and Recreation District



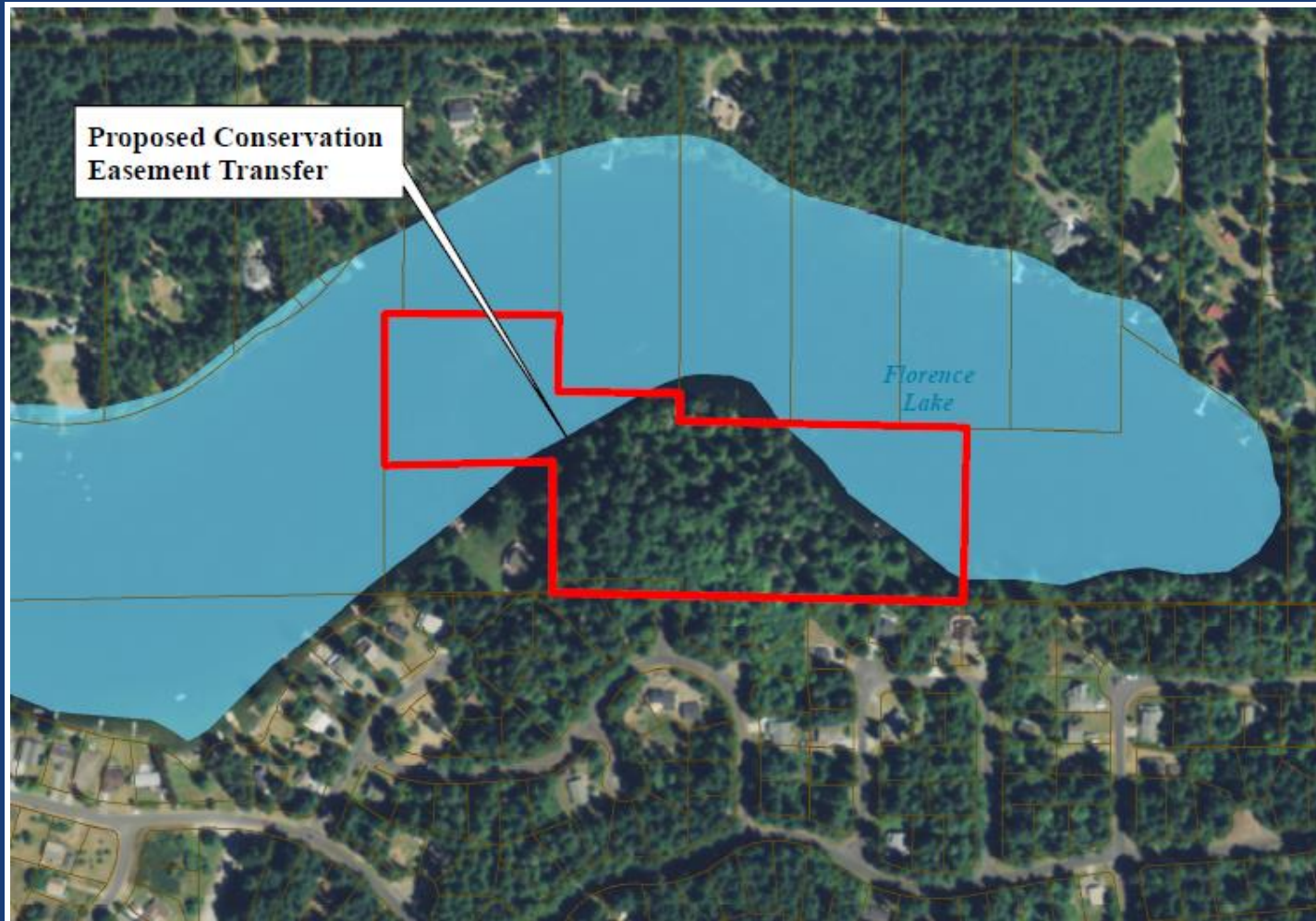
Anderson Island Transfer

Pierce County



Anderson Island Transfer

Pierce County

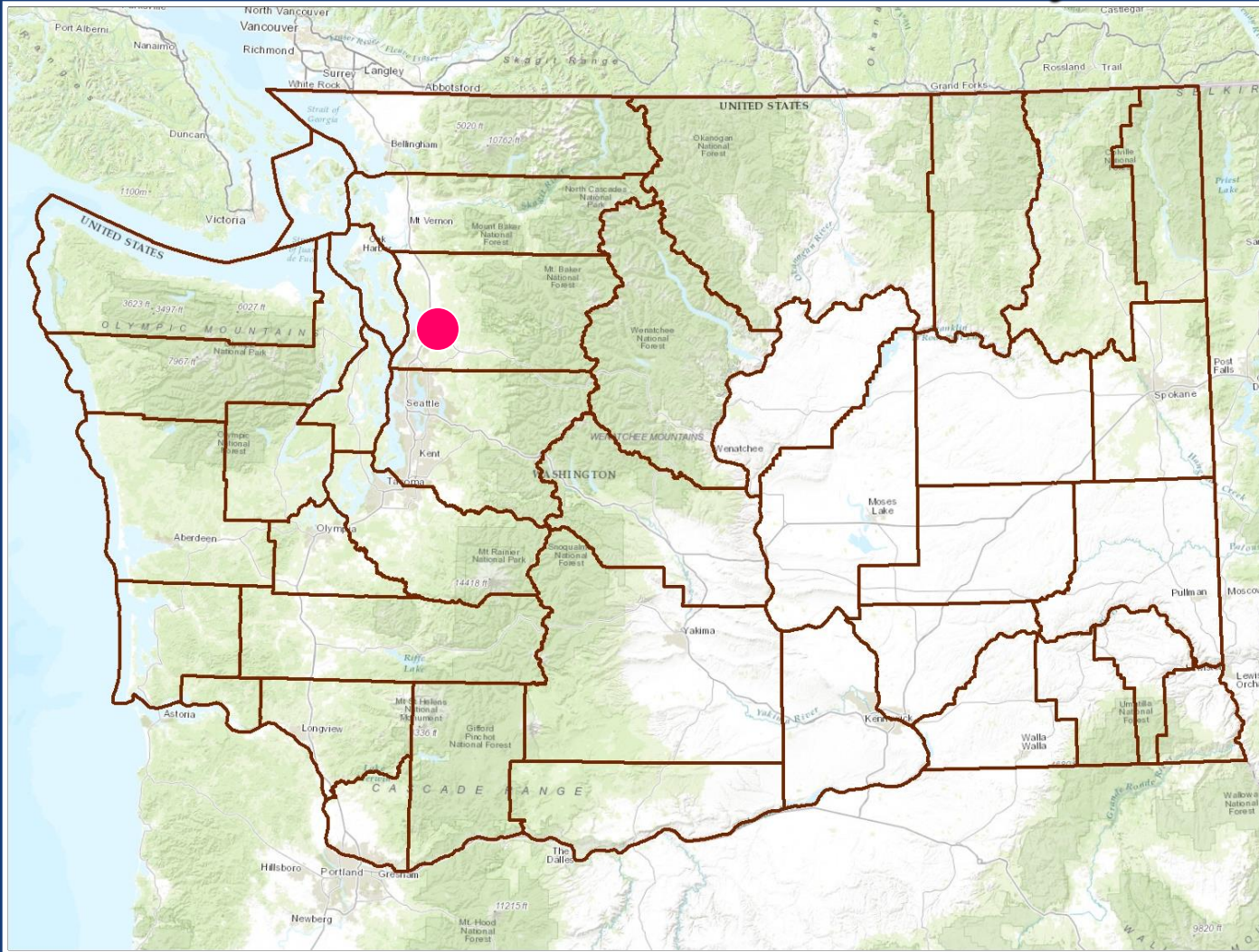


10 Acres

CE
received in
1982

Granite Falls ROW

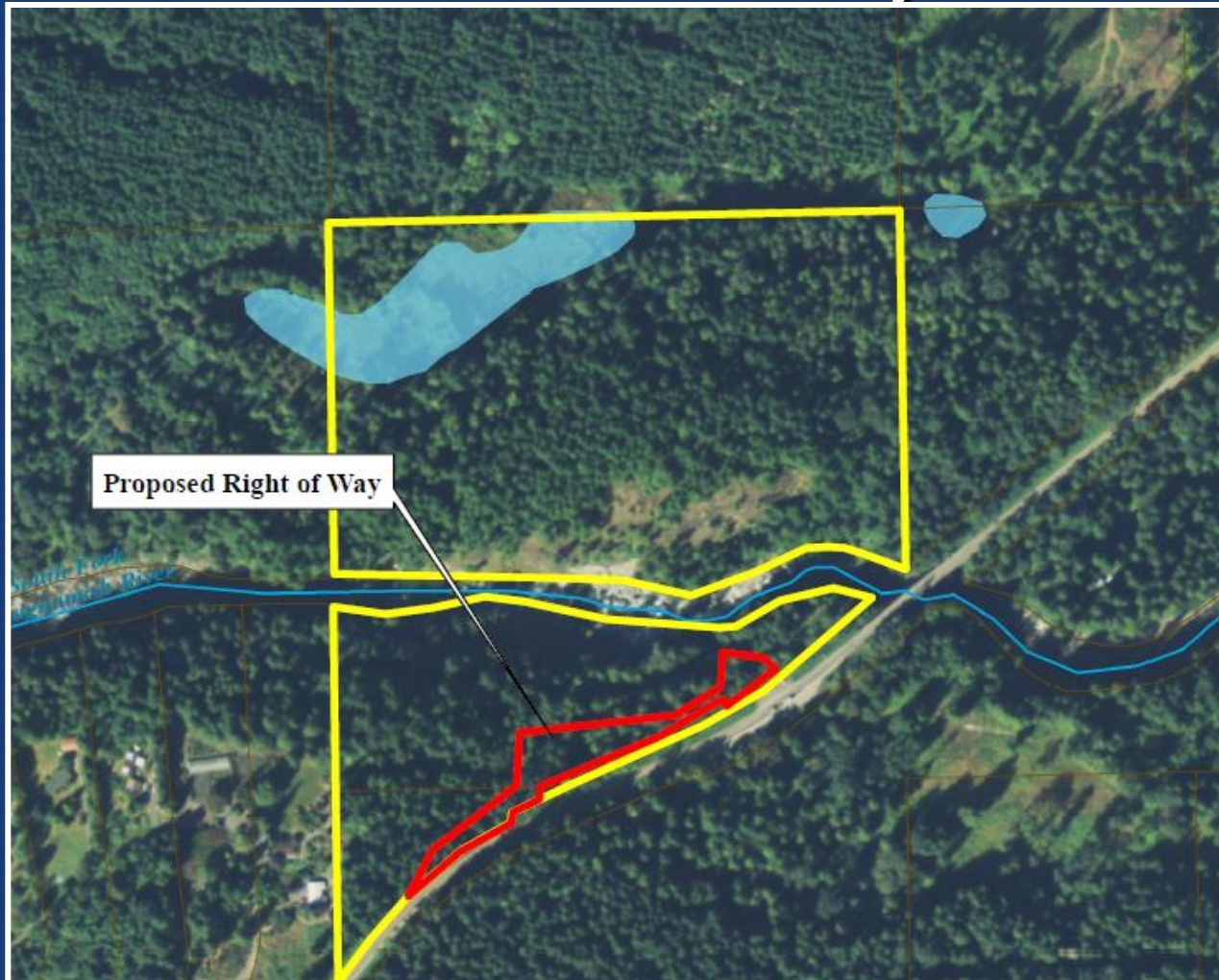
Snohomish County



January 13 & 14, 2017 WDFW Commission Meeting Presentation

Granite Falls ROW

Snohomish County



PUD paid
\$2,400 for
.37 Acres



PUBLIC COMMENT

Stemilt Basin
Photo WDFW

Land Transactions
January 13 & 14, 2017