

Is Washington Ready For A Rewilding?

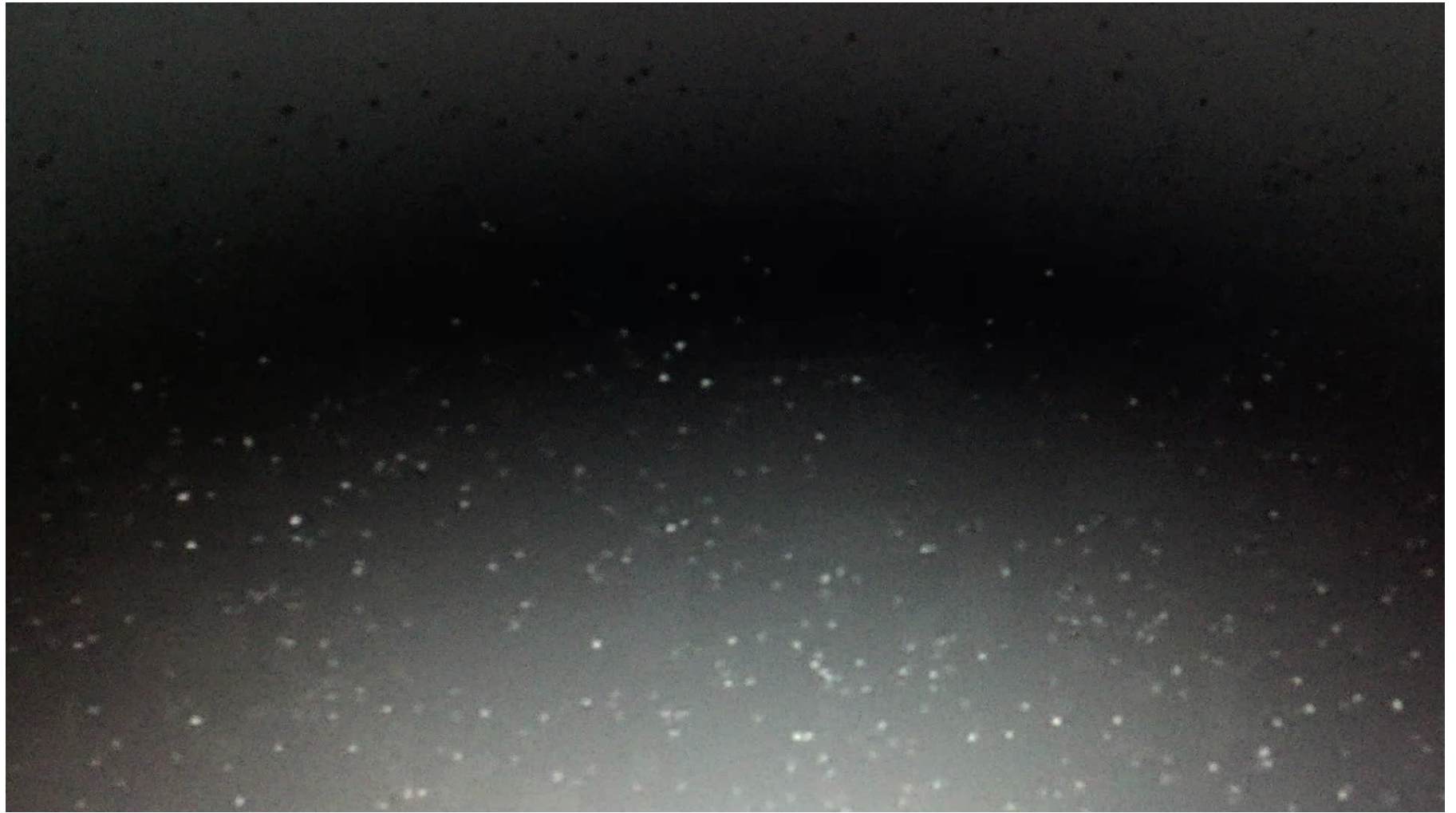


**Reardan FFA Agriculture
Issues Forum**

**Washington Department
of Fish and Wildlife
Board of Commissioners**

April 14th, 2017





THE
REWILDING
ZONE













Photo by Daniel J. Cox







Do they belong?

What will it take?

Is Washington ready?

WASHINGTON

IDAHO

PACIFIC

OCEAN

Portland

VICTORIA

Everett

Seattle

Tacoma

Wenatchee

Yakima

Spokane

Kootenay L.

Columbia

Franklin D. Roosevelt Lake

Priest Lake

Lake Pend Oreille

Coeur d'Alene L.

Dworshak Reservoir

Banks Lake

Potholes Res.

Columbia

Snake

Snake

Columbia

Is Washington Ready for a Rewilding?





DANGER

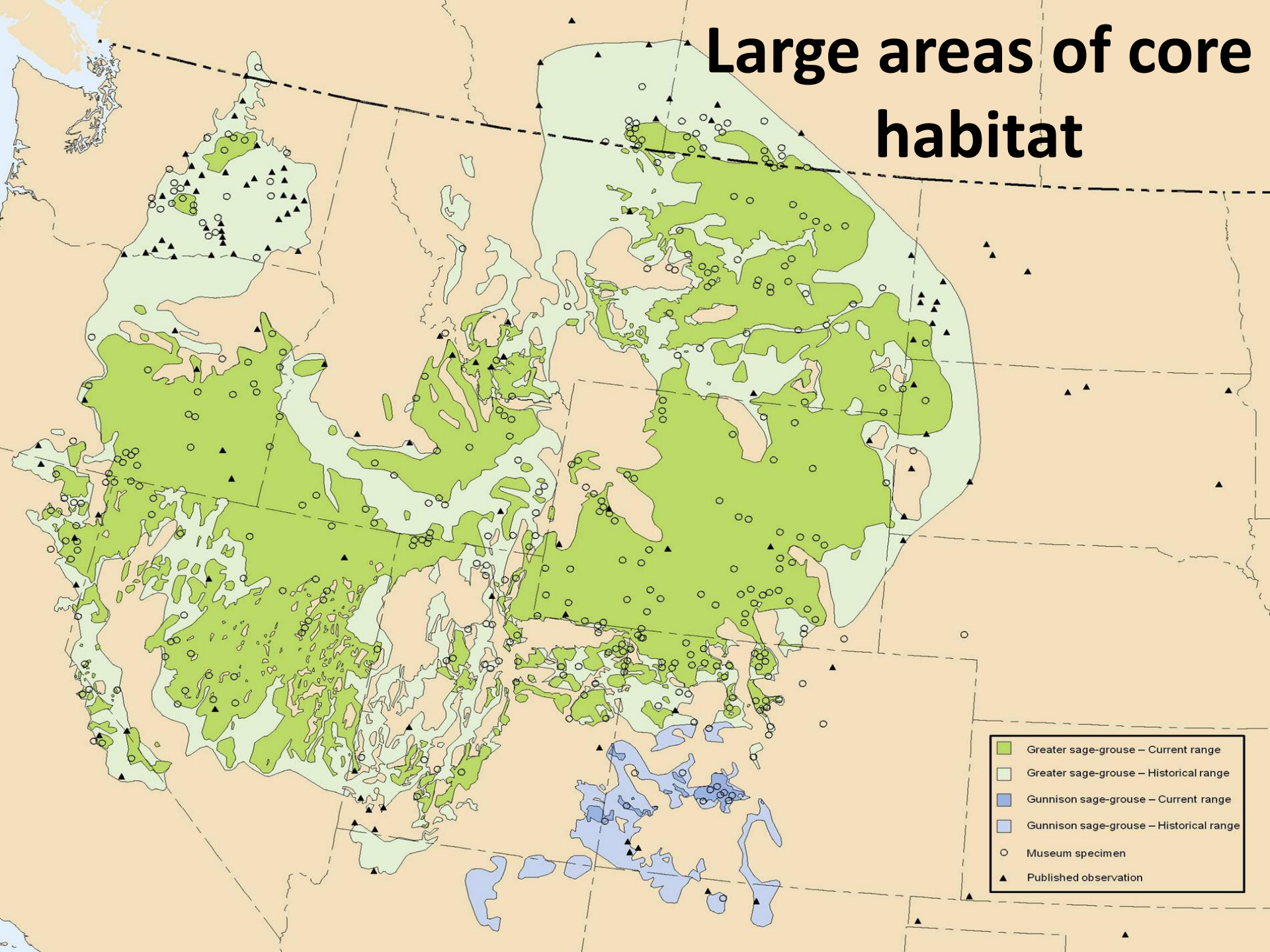
**ENTER AT YOUR
OWN RISK**

Key Concepts of Rewilding

- Cores
- Corridors
- Carnivores



Large areas of core habitat



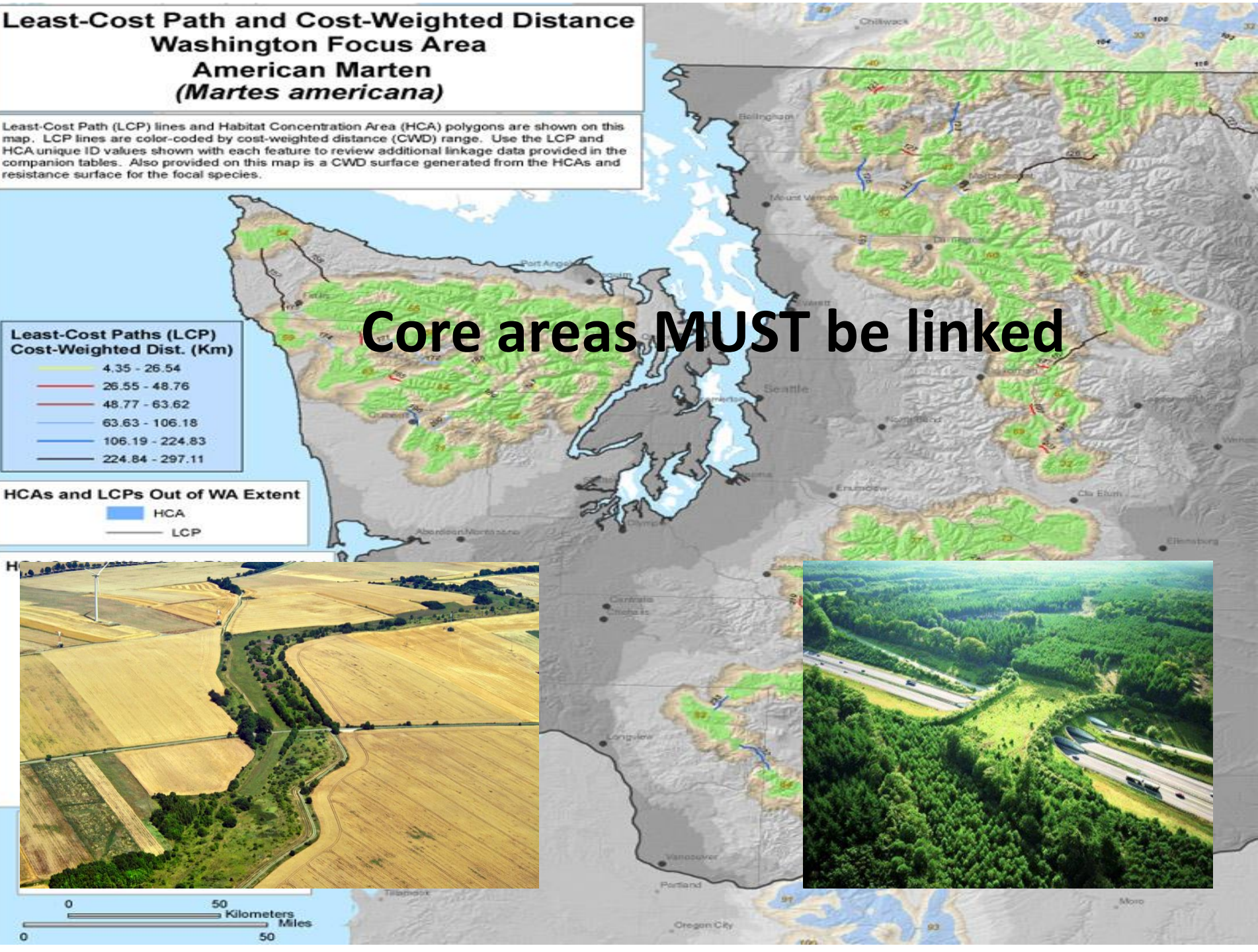
Least-Cost Path and Cost-Weighted Distance Washington Focus Area American Marten (*Martes americana*)

Least-Cost Path (LCP) lines and Habitat Concentration Area (HCA) polygons are shown on this map. LCP lines are color-coded by cost-weighted distance (CWD) range. Use the LCP and HCA unique ID values shown with each feature to review additional linkage data provided in the companion tables. Also provided on this map is a CWD surface generated from the HCAs and resistance surface for the focal species.

Least-Cost Paths (LCP)	Cost-Weighted Dist. (Km)
	4.35 - 26.54
	26.55 - 48.76
	48.77 - 63.62
	63.63 - 106.18
	106.19 - 224.83
	224.84 - 297.11

HCAs and LCPs Out of WA Extent	
	HCA
	LCP

Core areas MUST be linked



Top Predators are Instrumental



Restore

Reconnect

Rewild



Spine of the Continent

Boreal/Arctic

Atlantic

Proponent Introduction

Top carnivores have ecological benefits

Land management makes it feasible

Intact ecosystems are important



Opponent Introduction

Carnivore reintroduction does more damage than good

Geography and population make it almost impossible

Cooperation necessary is too complex

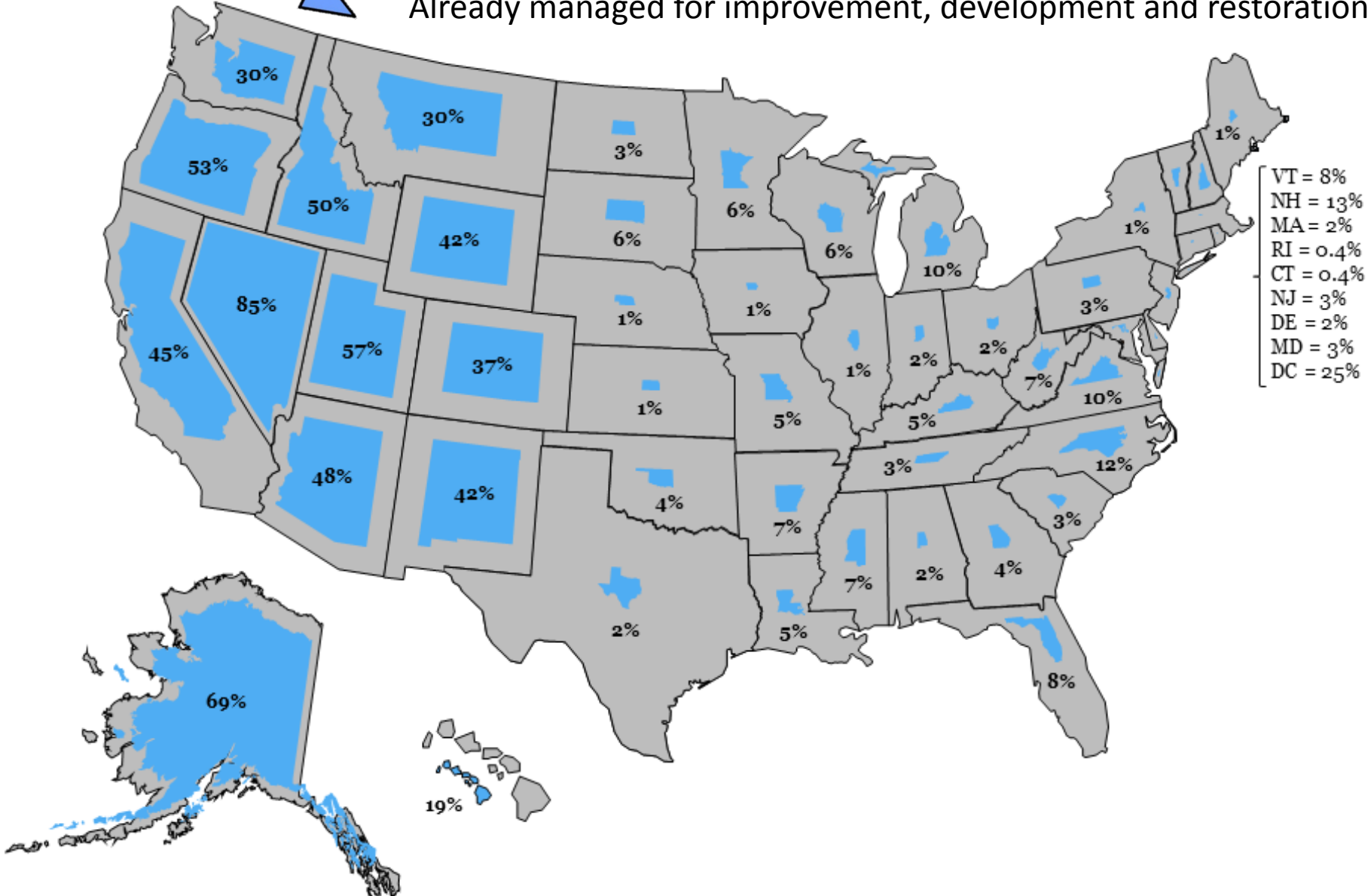


Portion of each state that is federal land



19.8 million acres of public land

Already managed for improvement, development and restoration



More work needs to be done!

Minimize conflicts

Provide for multiple use

Works well for humans AND wildlife



State Summary

AGENCY TOTAL ACRES COMPARED

City and County: 4,445,195
 Dept. of Natural Resources Aquatic Lands: 2,365,000
 Dept. of Natural Resources Uplands: 3,173,100
 Dept. of Fish and Wildlife: 622,543
 Federal: 13,795,325
 State Parks: 112,282

Total acres: 25,627,750 of 45,663,000

More about this map

Restore? Really?

AREA CLOSED

**RESTORATION
IN PROGRESS**

PLEASE KEEP OUT

Growing not shrinking!



Preserving
REARDAN'S
AUDUBON LAKE

Rich refuge for birds – treasure for our community



DUCKS UNLIMITED



Audubon Lake



Welcome to

REARDAN



Tax dollars = Gone?
Development = Gone?
Agriculture = Gone?





Reconnect!



Habitat Loss and Fragmentation



When large ecosystems become fragmented, species with large ranges may not have enough area to survive.

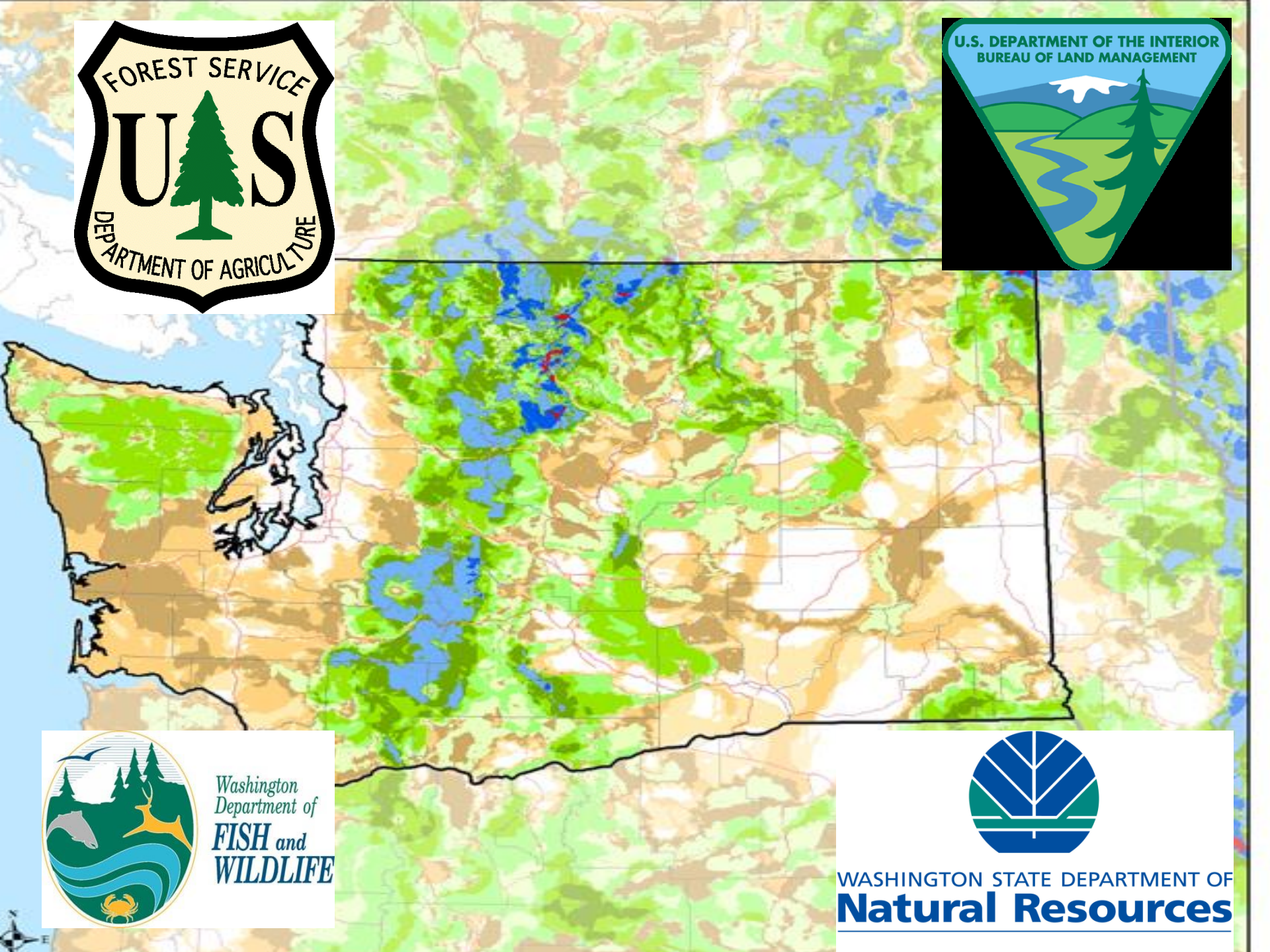




If you build it, they will come.









0 100 200 300 MILES
0 100 200 300 KILOMETERS



British Columbia

Baker

Glacier

RANGE

Rainier

St. Helens

Washington



\$100,000,000

Portland

Hood

Salem

Jefferson



100,000 Acres

Eugene

Thurston

Ben

Crater Lake

Western Cascades
CASCAD
Cascades
High

Medford

Klamath Falls

Oregon

Idaho

Shasta

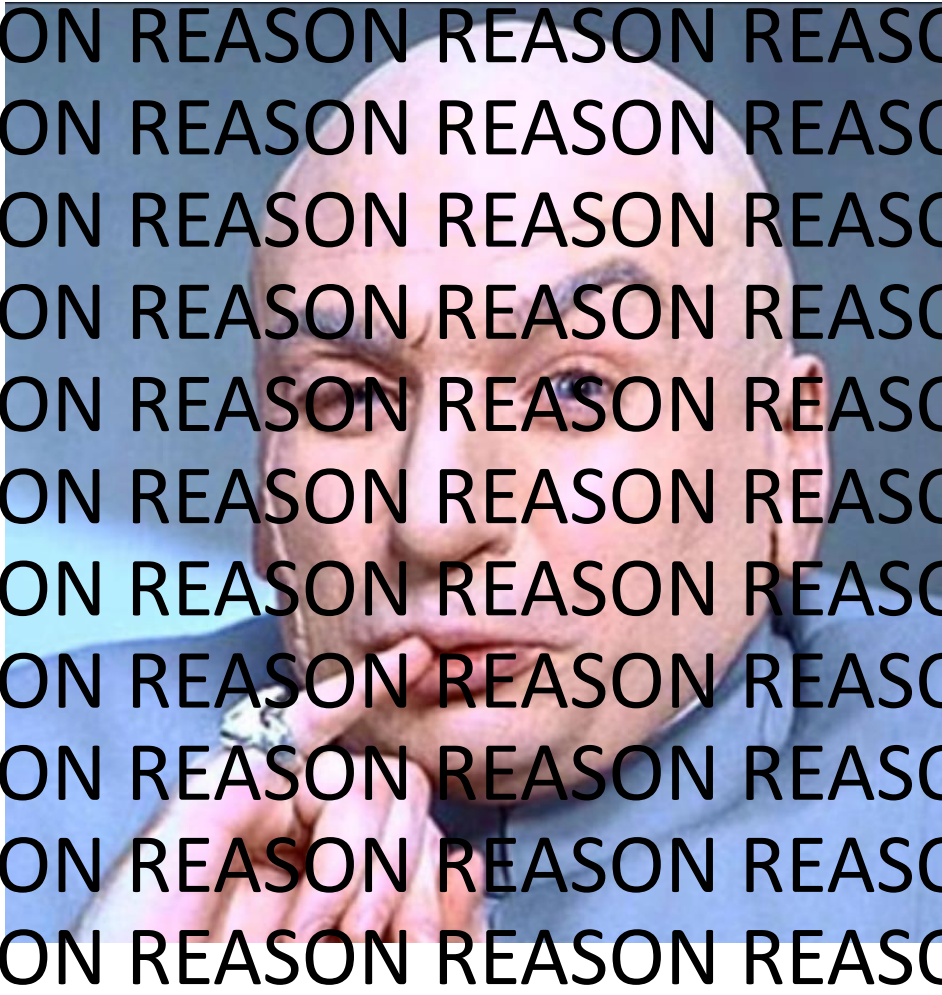
California

Nevada

Pacific Ocean

\$\$\$One Hundred Million Reasons\$\$\$

REASON REASON REASON REASON REASON REASON
REASON REASON REASON REASON REASON REASON
REASON REASON REASON REASON REASON REASON
REASON REASON REASON REASON REASON REASON
REASON REASON REASON REASON REASON REASON
REASON REASON REASON REASON REASON REASON
REASON REASON REASON REASON REASON REASON
REASON REASON REASON REASON REASON REASON
REASON REASON REASON REASON REASON REASON
REASON REASON REASON REASON REASON REASON
REASON REASON REASON REASON REASON REASON
REASON REASON REASON REASON REASON REASON
REASON REASON REASON REASON REASON REASON
REASON REASON REASON REASON REASON REASON
REASON REASON REASON REASON REASON REASON

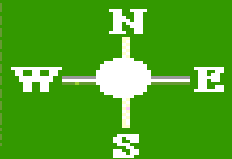


MONTANA

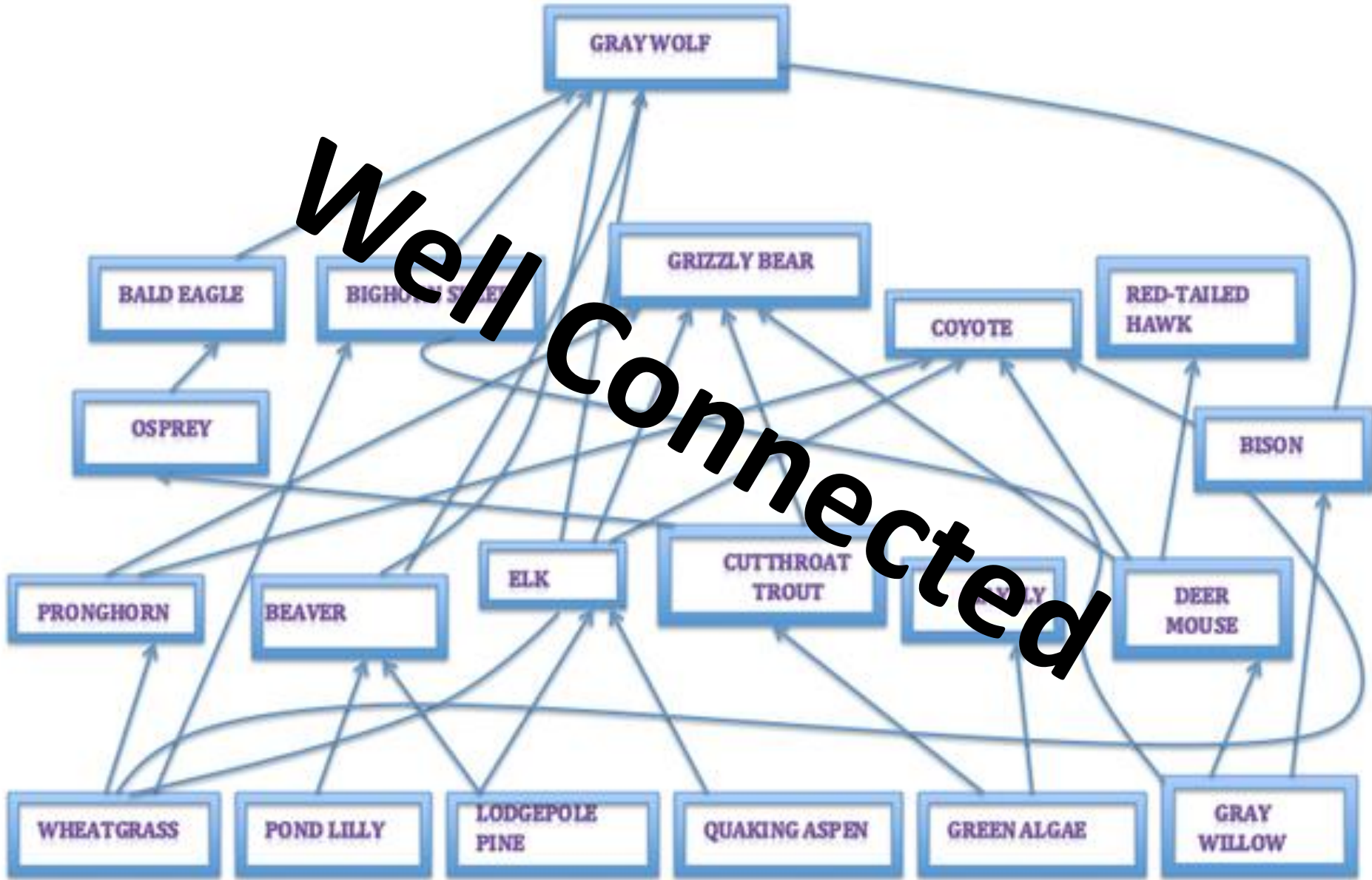


West Entrance

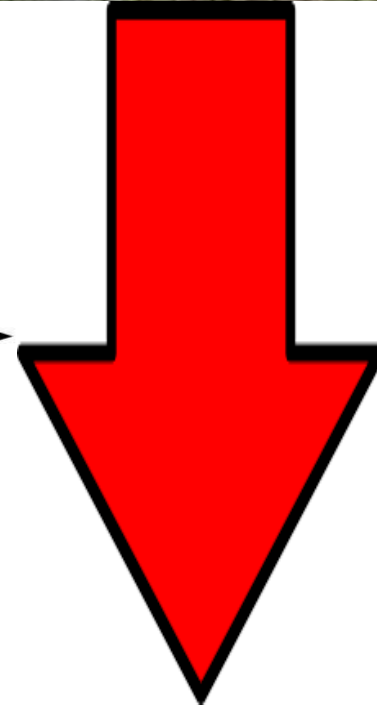
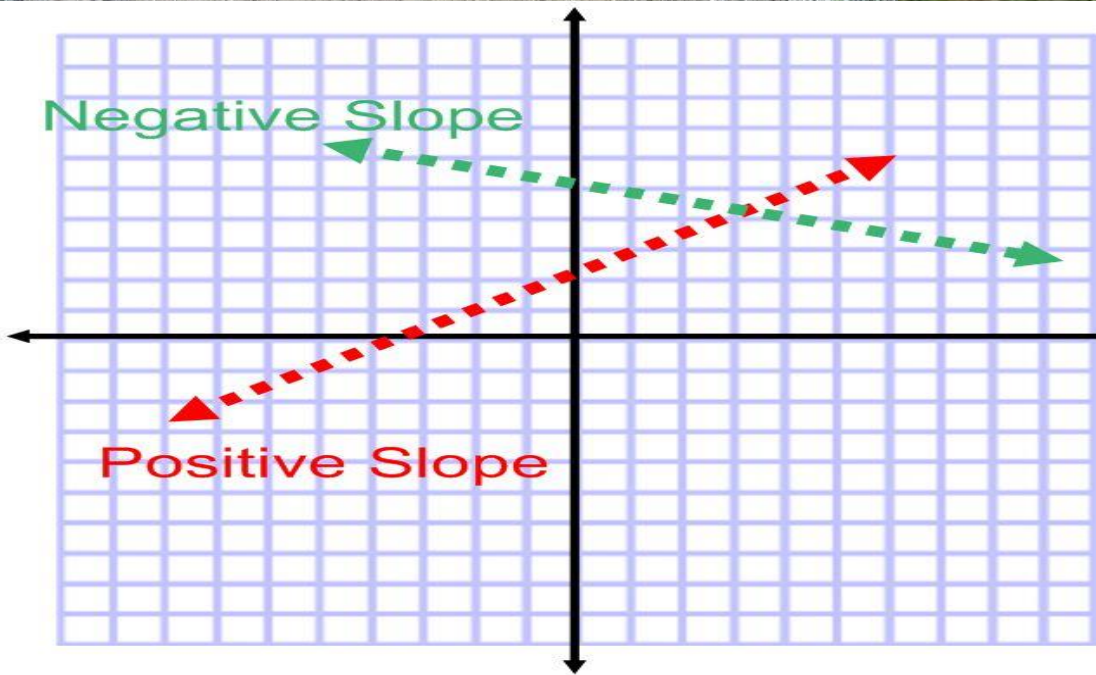
IDAHO



Well Connected







Electric Marked Fencing



Range Riders



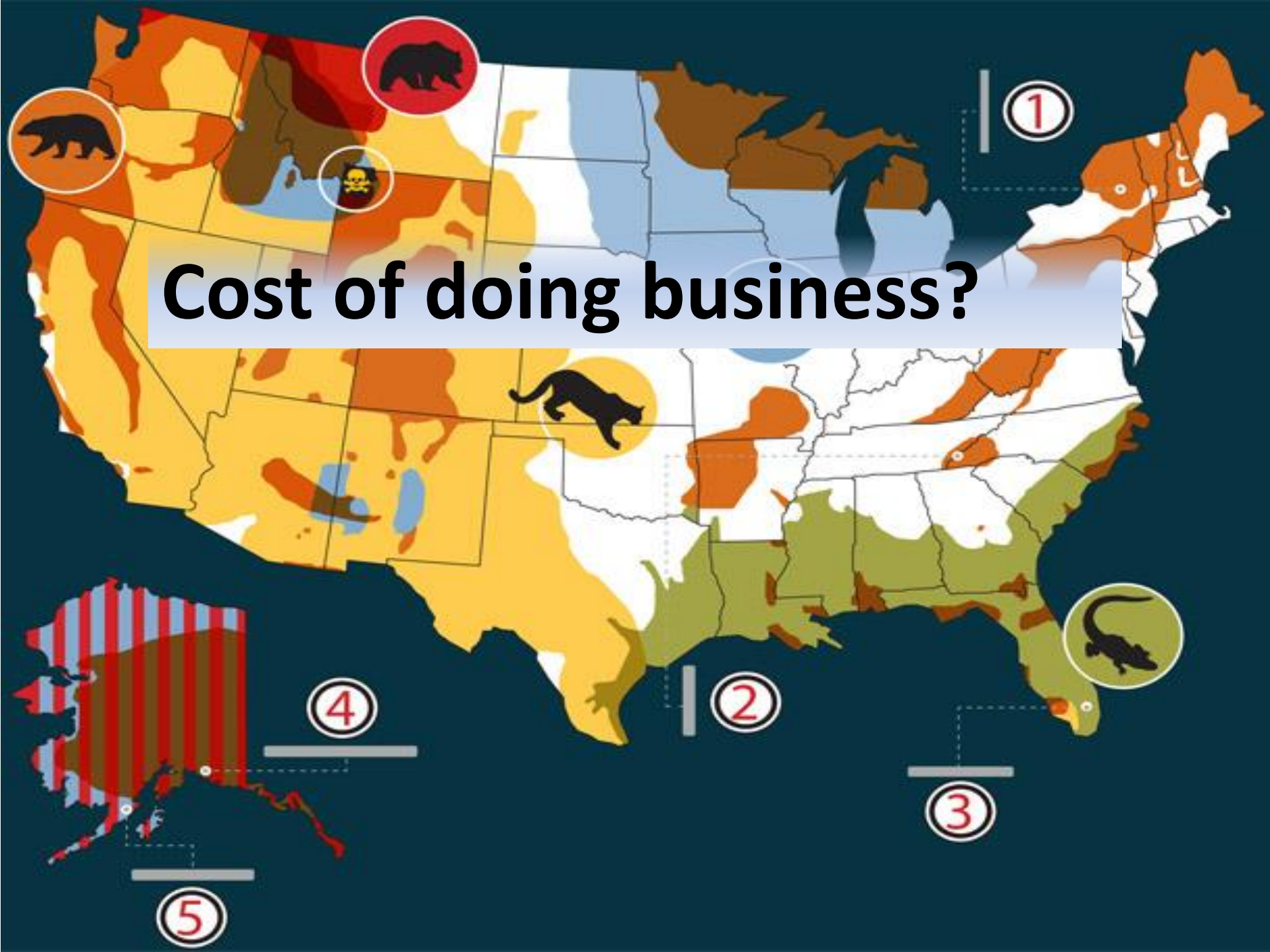
Guard Dogs



Rotating Pastures and Timing



Cost of doing business?



“When selling dollar calves, cattlemen aren’t going to make a nickel!”

2016- Craig Grub - Cattleman

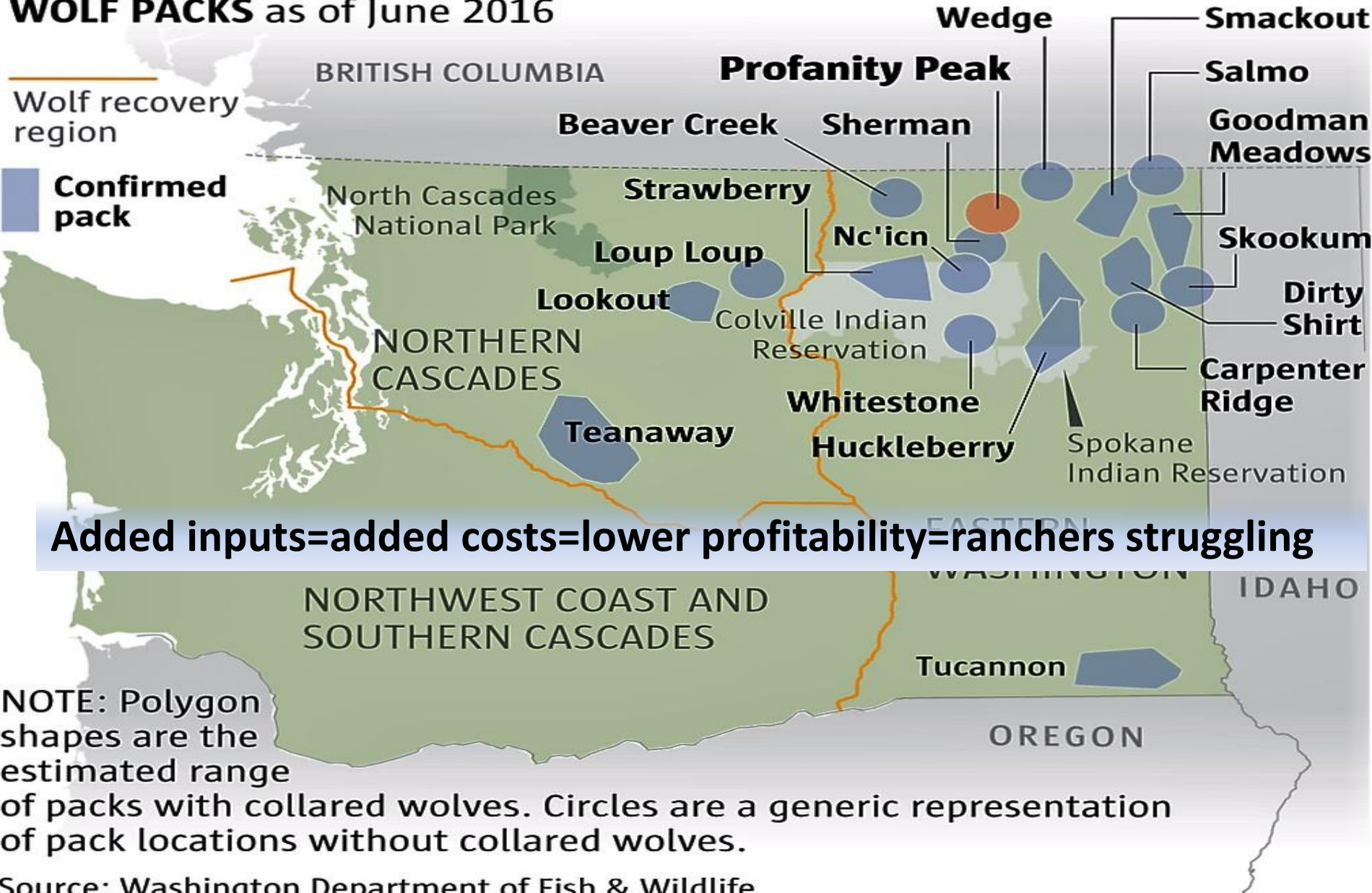


Wolves in Washington

WOLF PACKS as of June 2016

Wolf recovery region

Confirmed pack




Added inputs=added costs=lower profitability=ranchers struggling

NOTE: Polygon shapes are the estimated range of packs with collared wolves. Circles are a generic representation of pack locations without collared wolves.

Source: Washington Department of Fish & Wildlife

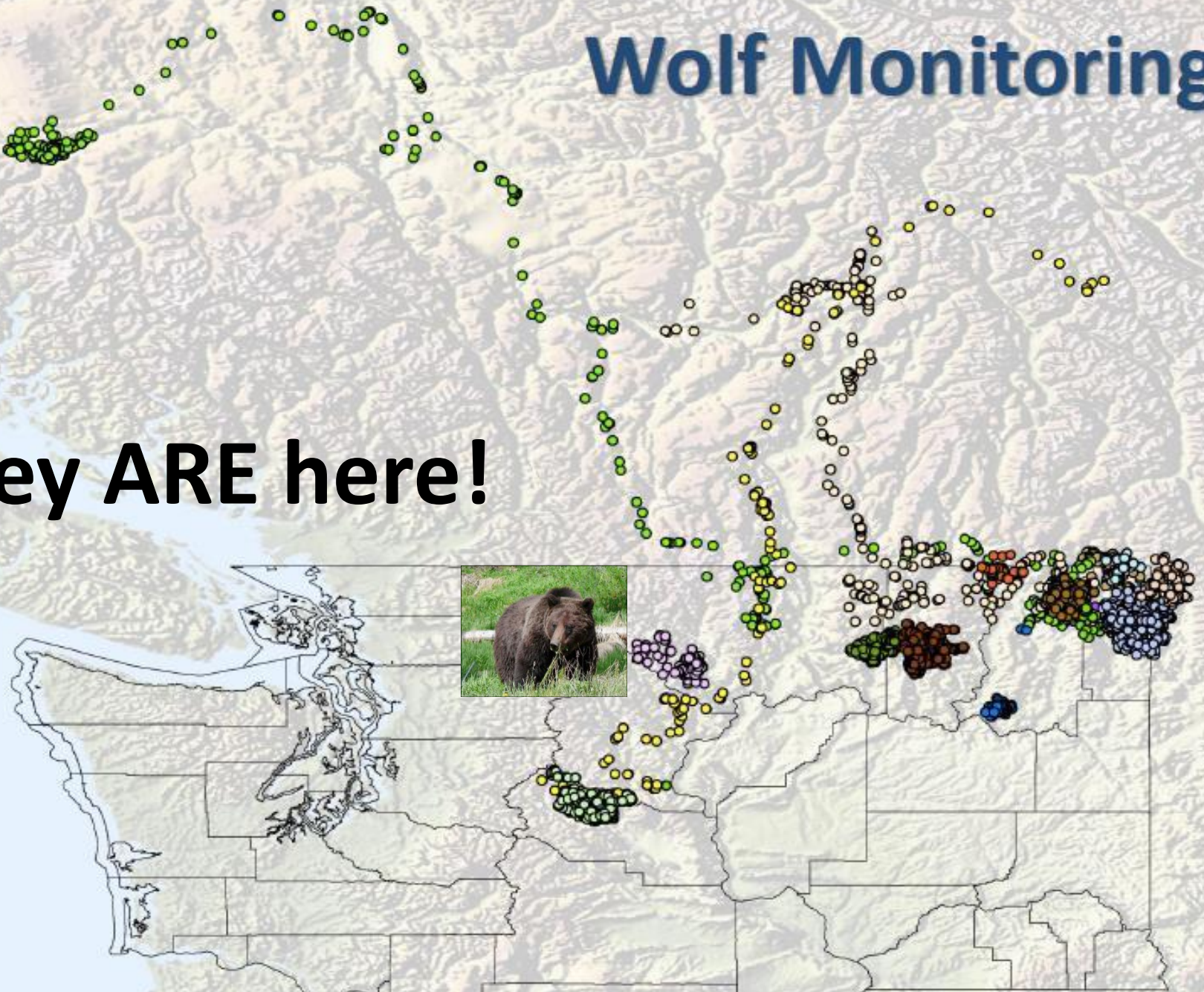
MARK NOWLIN / THE SEATTLE TIMES

A group of six people, including men and women, are riding horses across a vast, open field of dry, yellowish grass. They are wearing cowboy hats and casual attire. In the background, there are rolling hills and a range of large, rugged mountains with significant snow cover under a clear blue sky.

Alberta success can serve as a model!

Wolf Monitoring

They ARE here!



Grizzly Bears in the West

North Cascades
(~6)

Selkirks
(30-50)

Cabinet-Yaak
(38-48)

Northern Continental Divide
(~800 bears)

Greater
Yellowstone
(~700)

Selway-Bitterroot
(occasional sightings)



Current Recovery Areas



Potential Habitat



Historic Range



Opponent Summary

- Land use policy is counterproductive to multiple use mentality
- Corridors already exist/Agencies already manage
- Apex predators pose multiple risks



Proponent Summary

- **Development of core habitat NEEDS to continue**
- **Connectivity KEY for future success**
- **Reestablishment of top carnivores to ecosystems makes ecosystems stronger**





THE
REWILDING
ZONE

Thank You

Is Washington Ready For A Rewilding?

