

Agenda Item 12

Migratory Bird Hunting Regulations

WAC 232-28-436



Washington Department of
FISH and WILDLIFE

Kyle Spragens

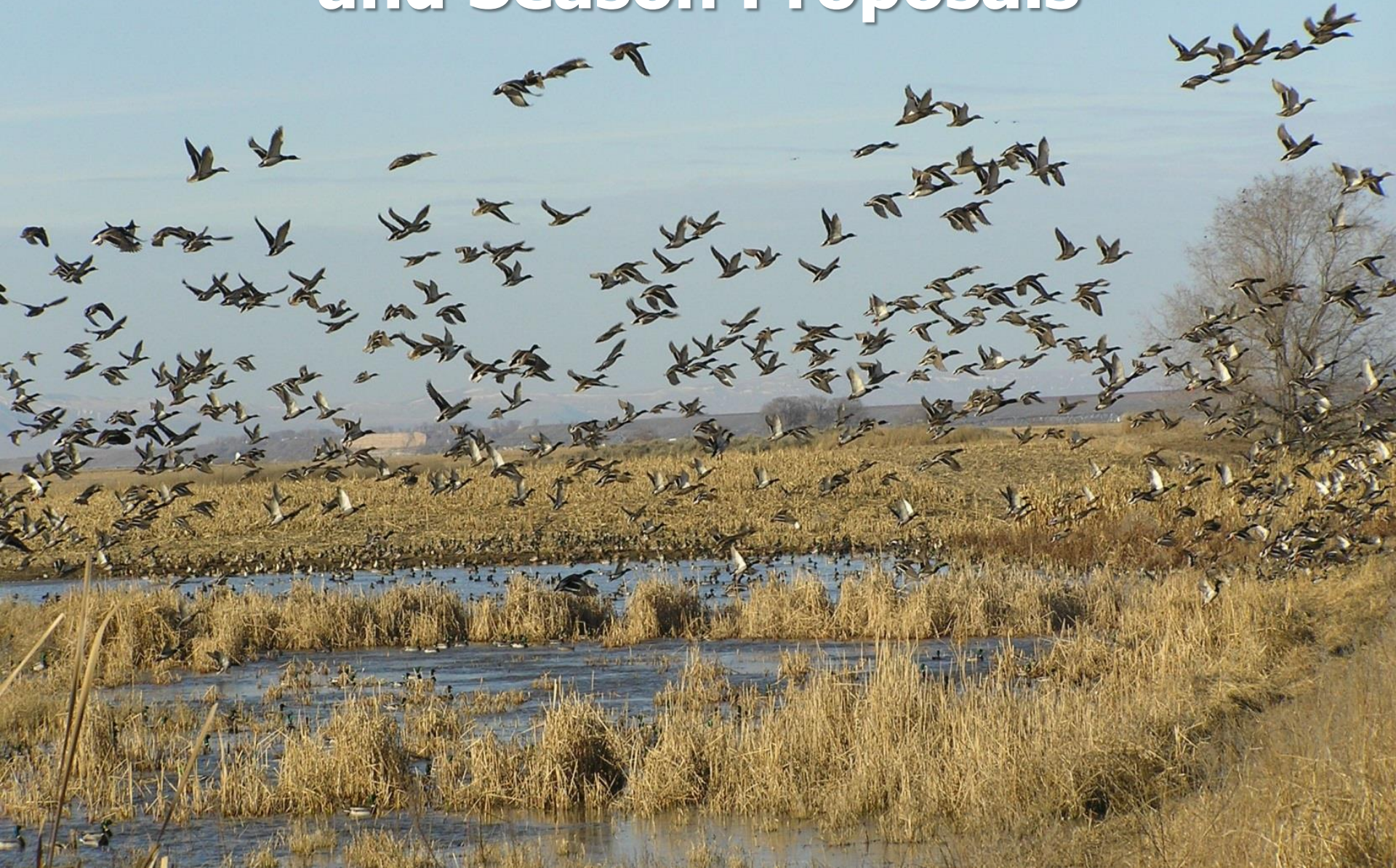
Waterfowl Section Manager
Game Division, Wildlife Program

Migratory Bird Hunting Seasons Authorities

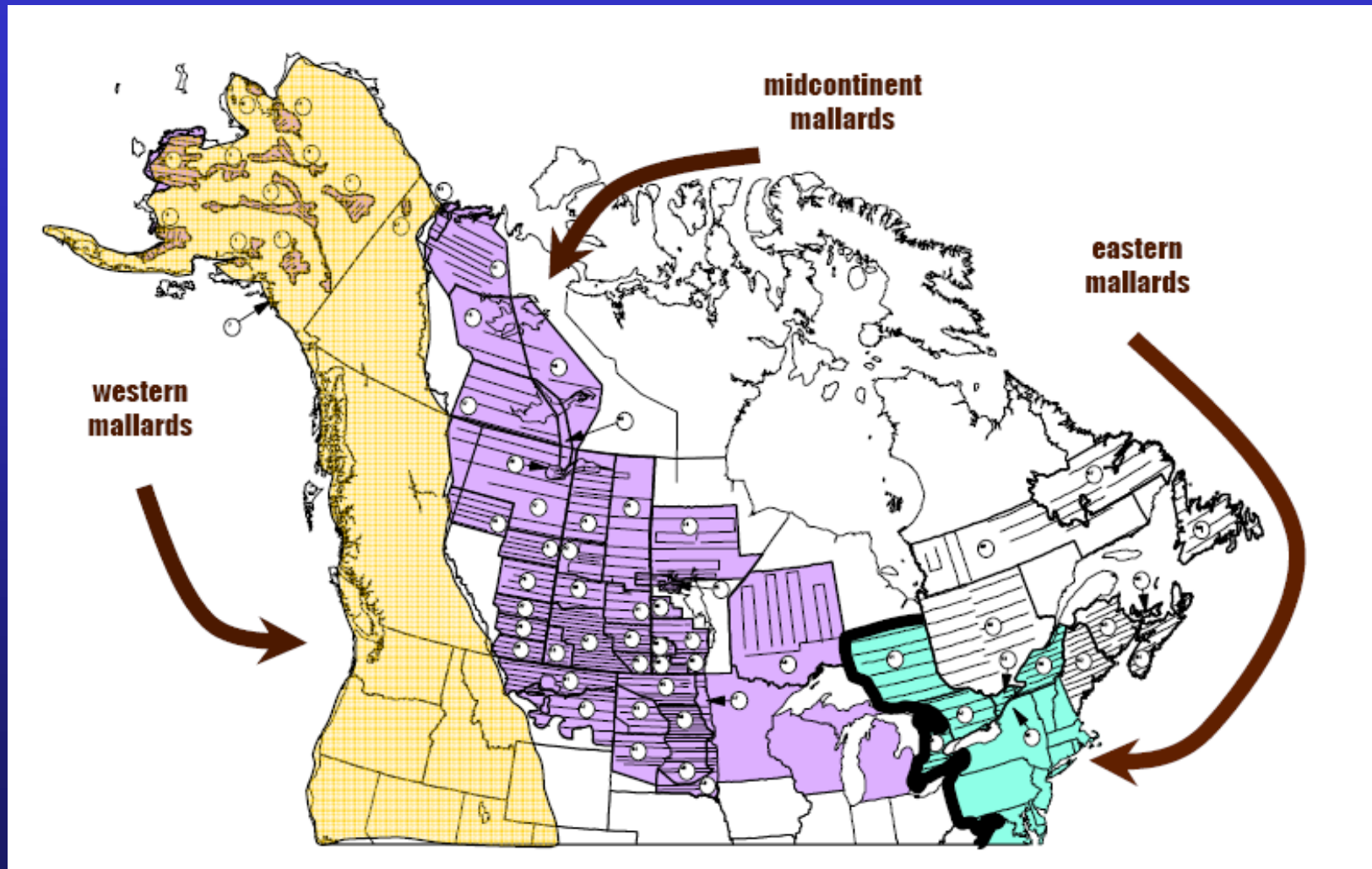
- **USFWS Authority: Federal Framework**
 - Earliest opening date
 - Latest closing date
 - Limits
 - Season length
- **State Discretion: WAC within Federal Framework**
 - Can be more restrictive but not more liberal
 - Season timing within outside dates



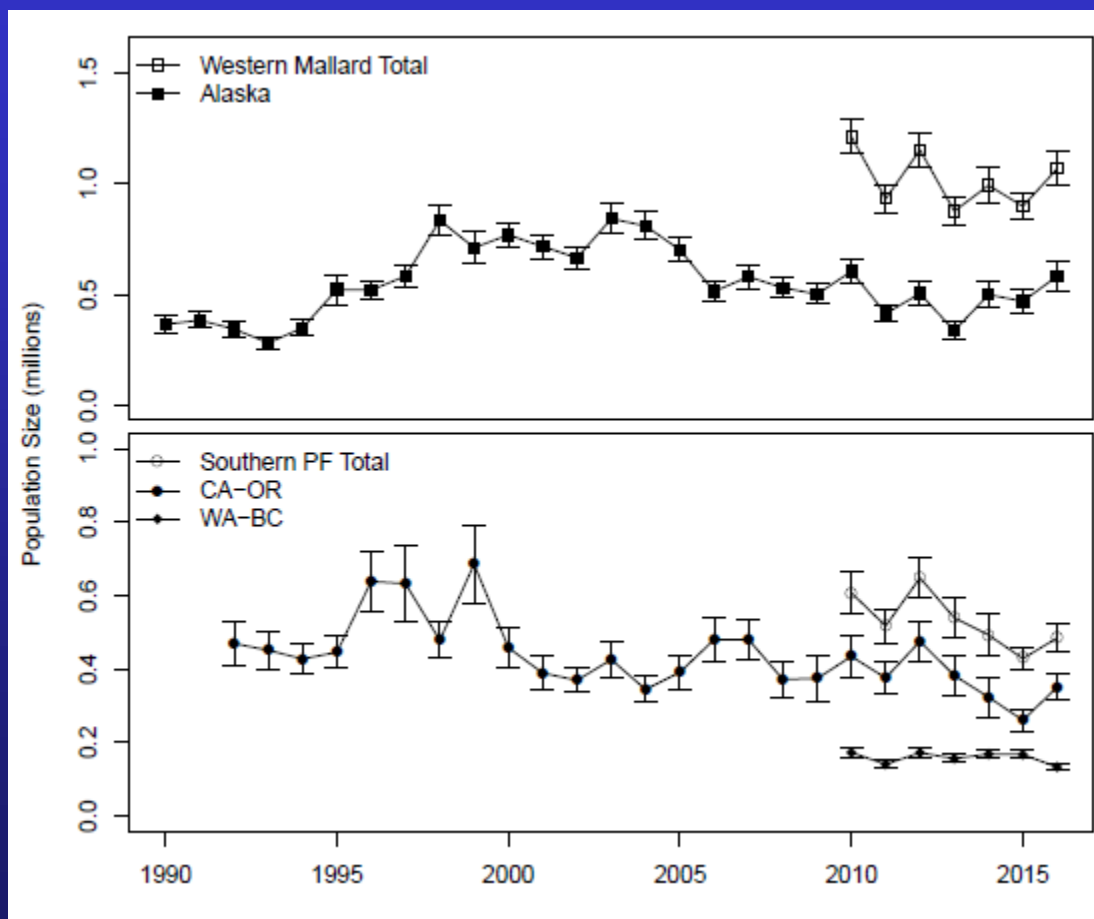
Duck Population Status and Season Proposals



North American Mallard Stocks



2016 Western Mallard Trends



2017-18 Western Mallard Regulatory Prescription

Southern Pacific Flyway BPOP ^b	Alaska BPOP ^c														
	0.05	0.1	0.15	0.2	0.25	0.3	0.35	0.4	0.45	0.5	0.55	0.6	0.65	0.7	≥0.75
0.05	C	C	C	C	C	C	C	C	C	C	C	C	R	R	L
0.1	C	C	C	C	C	C	C	C	C	C	R	R	L	L	L
0.15	C	C	C	C	C	C	C	C	R	R	L	L	L	L	L
0.2	C	C	C	C	C	C	R	R	M	L	L	L	L	L	L
0.25	C	C	C	C	C	R	M	L	L	L	L	L	L	L	L
0.3	C	C	C	R	R	L	L	L	L	L	L	L	L	L	L
0.35	C	C	C	R	L	L	L	L	L	L	L	L	L	L	L
0.4	C	C	R	L	L	L	L	L	L	L	L	L	L	L	L
0.45	C	R	L	L	L	L	L	L	L	L	L	L	L	L	L
0.5	R	L	L	L	L	L	L	L	L	L	L	L	L	L	L
0.55	L	L	L	L	L	L	L	L	L	L	L	L	L	L	L
0.6	L	L	L	L	L	L	L	L	L	L	L	L	L	L	L
0.65	L	L	L	L	L	L	L	L	L	L	L	L	L	L	L
0.7	L	L	L	L	L	L	L	L	L	L	L	L	L	L	L
≥0.75	L	L	L	L	L	L	L	L	L	L	L	L	L	L	L

^a C = closed season, R = restrictive, M = moderate, L = liberal.

^b Estimated number of mallards (in millions) observed in Alaska (WBPMS strata 1-12).

^c Estimated number of mallards (in millions) observed in the southern Pacific Flyway (California, Oregon, Washington, and British Columbia).

2017-18: Liberal Season

AHM / Washington Season Timing (From Game Management Plan)

Table 2. AHM Regulation Packages and Washington Season Timing.

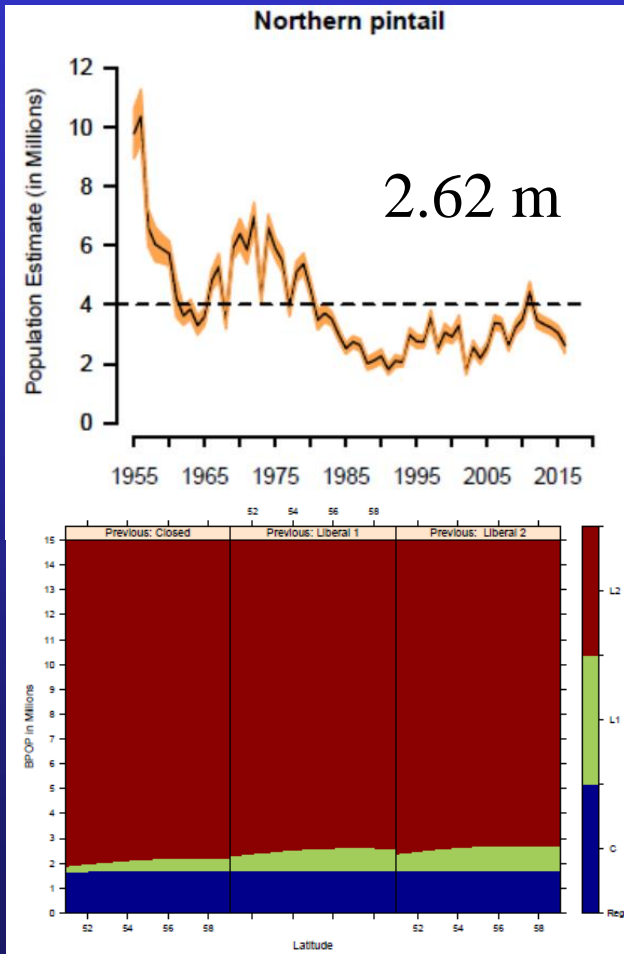
Regulation package	EASTERN WASHINGTON			WESTERN WASHINGTON		
	Days	Limit total/mall/♀mall	Season Timing*	Days	Limit total/mall/♀mall	Season Timing*
Liberal	107	7/7/2	mid-Oct. thru late Jan.	107	7/7/2	mid-Oct. thru late Jan.
Moderate	93	7/5/2	mid-late Oct. – 9 days; remainder early-Nov. thru late-Jan.	86	7/5/2	mid-late Oct. – 9 days; remainder mid-Nov. thru late-Jan.
Restrictive	67	4/3/1	mid-late Oct. – 9 days; remainder mid-Nov. thru mid-Jan.	60	4/3/1	mid-late Oct. – 9 days; remainder mid-Nov. thru early-Jan.
Very Restrictive	45	4/3/1	mid-Nov. thru early Dec.; late Dec. thru mid-Jan.	38	4/3/1	mid-Nov. thru early Dec.; late Dec. thru early-Jan.

* USFWS rules on duck season timing:

1. Washington zones (2) – E. Washington and W. Washington
2. Season dates must be the same within each zone
3. Seasons may only be split into 2 segments
4. Youth days in addition to above days, except for liberal package

Pintail Optimal Regulatory Strategy

Northern Pintail



BPOP ^a	Mean latitude ^c																				
	55	55.2	55.4	55.6	55.8	56	56.2	56.4	56.6	56.8	57	57.2	57.4	57.6	57.8	58	58.2	58.4	58.6	58.8	59
≤1.7	C	C	C	C	C	C	C	C	C	C	C	C	C	C	C	C	C	C	C	C	C
1.75-2.5	L1	L1	L1	L1	L1	L1	L1	L1	L1	L1	L1	L1	L1	L1	L1	L1	L1	L1	L1	L1	L1
2.55	L1	L1	L1	L1	L1	L1	L1	L1	L1	L1	L1	L1	L1	L1	L1	L1	L1	L1	L1	L1	L1
2.6	L1	L1	L1	L1	L1	L1	L1	L1	L1	L1	L1	L1	L1	L1	L1	L1	L1	L1	L1	L1	L1
2.65	L1	L1	L1	L1	L1	L1	L1	L1	L1	L1	L1	L1	L1	L1	L1	L1	L1	L1	L1	L1	L1
2.7	L2	L2	L2	L2	L2	L2	L2	L2	L2	L2	L2	L2	L2	L2	L2	L2	L2	L2	L2	L2	L2
≥2.75	L2	L2	L2	L2	L2	L2	L2	L2	L2	L2	L2	L2	L2	L2	L2	L2	L2	L2	L2	L2	L2

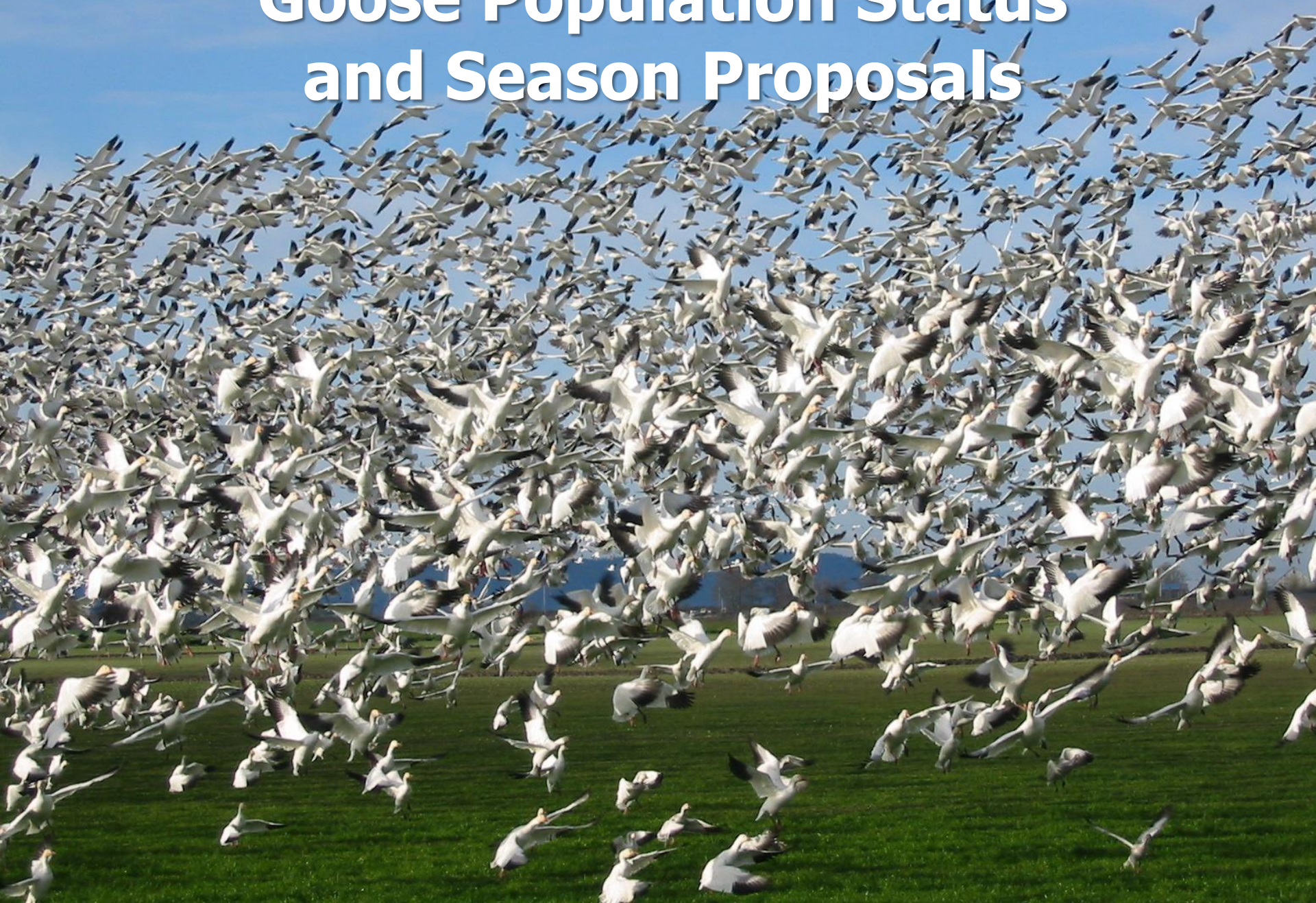
^a C = closed season, L1 = liberal season with 1-bird daily bag limit, L2 = liberal season with 2-bird daily bag limit.
^b Observed northern pintail breeding population size (in millions) from the WBPBS (strata 1-18, 20-50, 75-77).
^c Mean latitude (in degrees) is the average latitude of the WBPBS strata weighted by population size.

2017-18 Duck Season Proposals

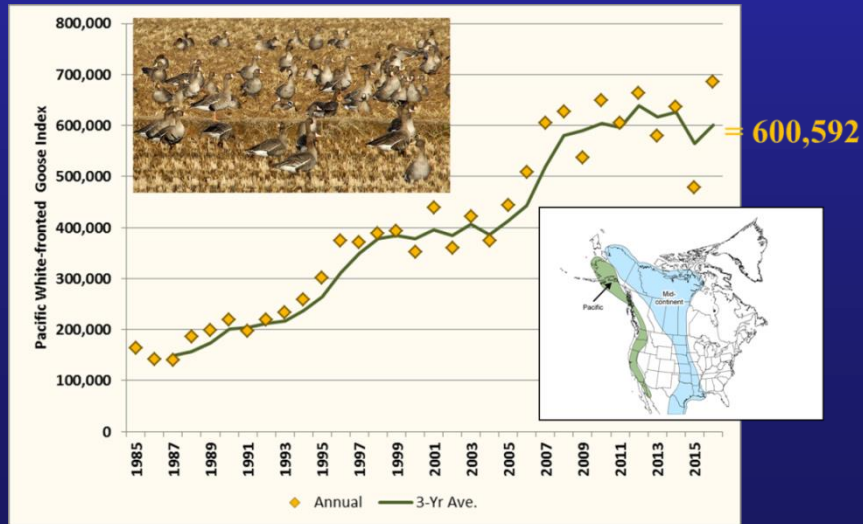
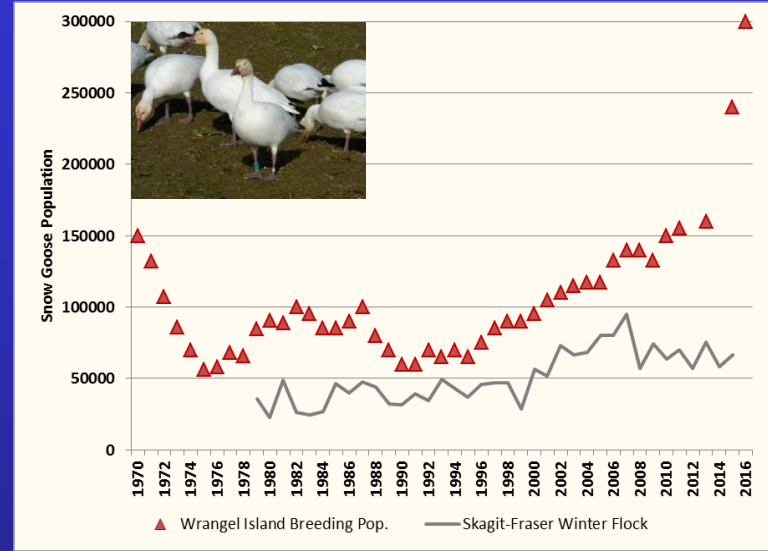
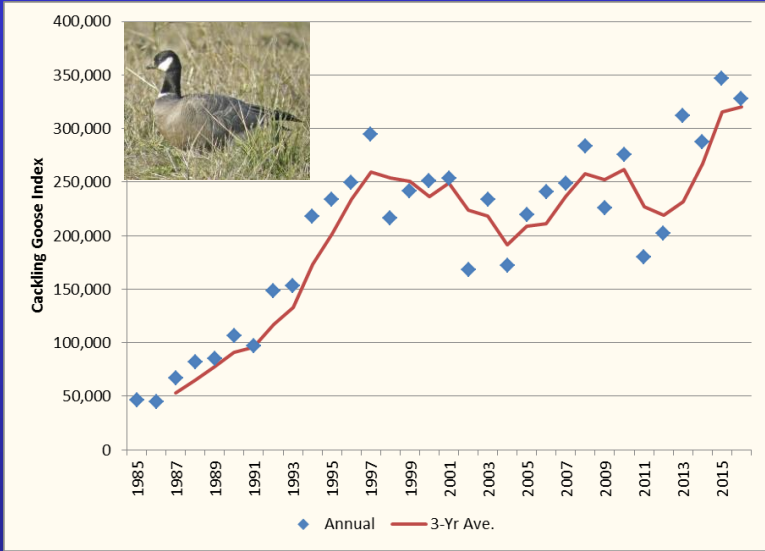
WAC 232-28-436

- Proposed general duck season dates and limits similar to 2016-17, except pintail bag limit
 - 107 days
 - 2 day youth hunt
 - 105 day general season
 - 7 ducks, to include not more than:
 - 2 hen mallard, 1 pintail (p. 3-4 changes)
 - 2 redhead, 2 canvasback, 3 scaup
 - W. WA: 2 scoter, 2 long-tail, 2 goldeneye, 1 harlequin (season limit)
- Proposed Change: p. 3 (2017-18)

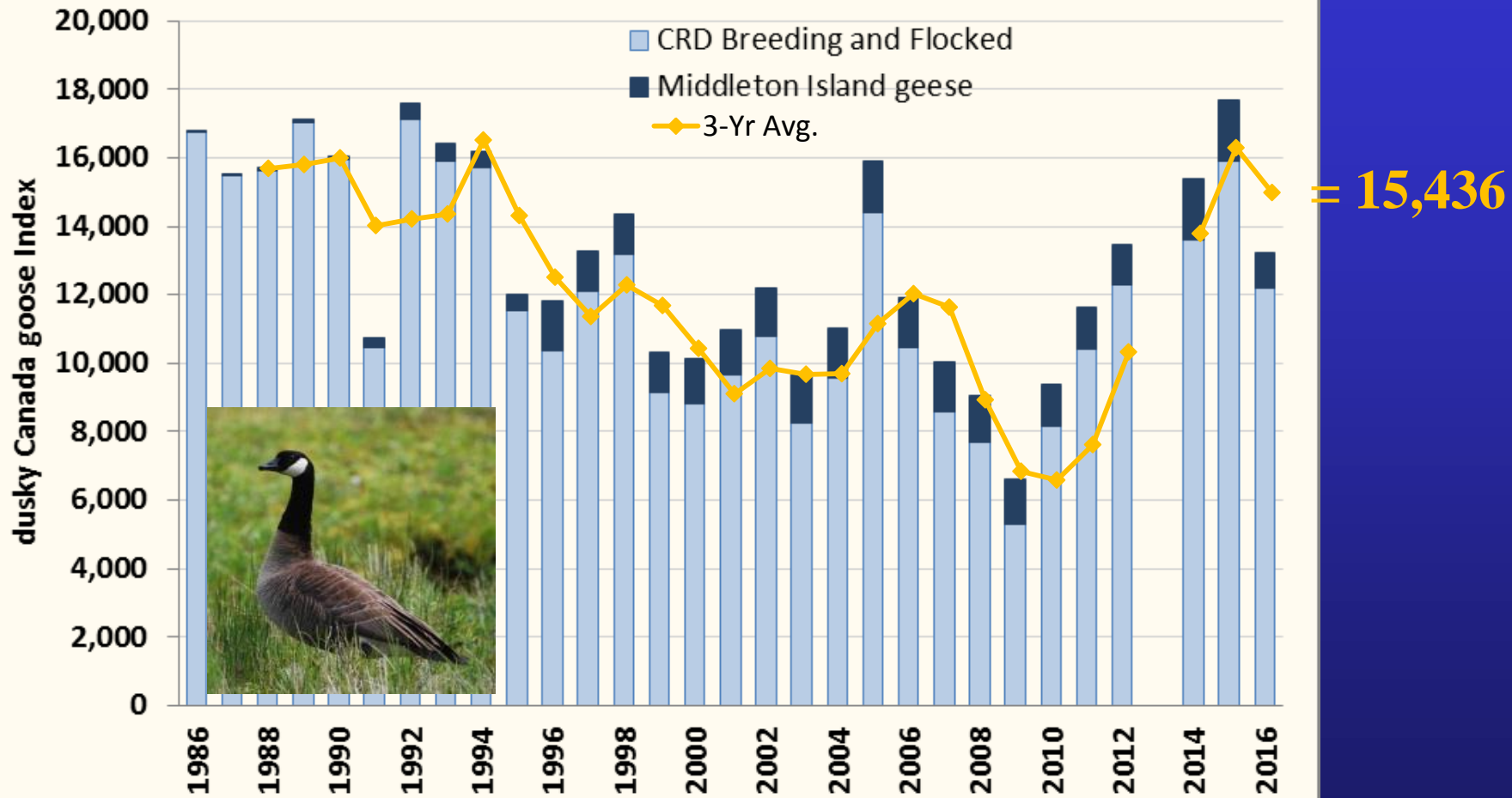
Goose Population Status and Season Proposals



Goose Trends



Dusky Canada Goose Trends



2017-18 Goose Season Proposal

WAC 232-28-436

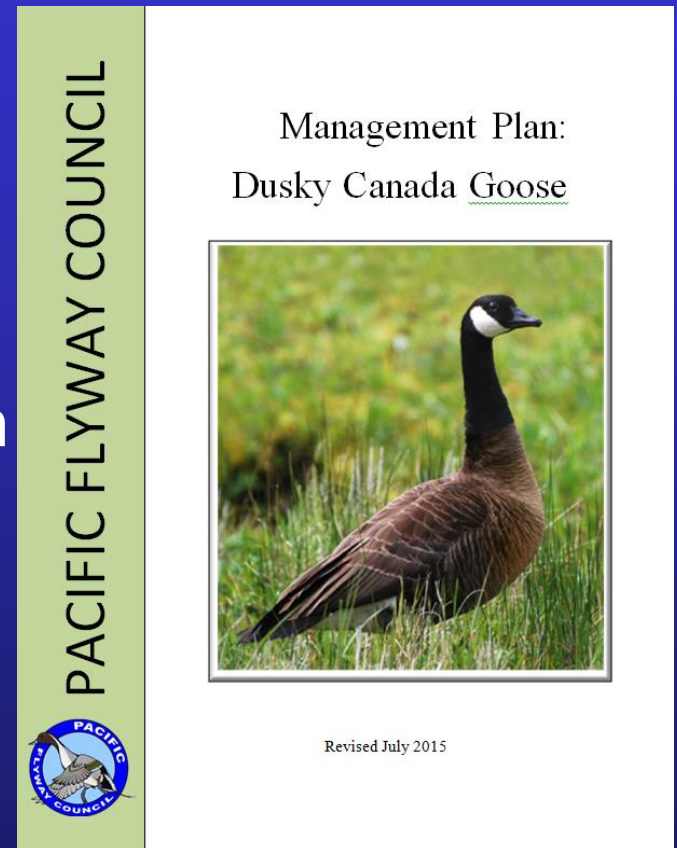
- Allows independent season selection.
- Parallels bag limits in Oregon NW permit zone.
- **Proposed Changes** (p. 6, 8, 10-12):
 - 4 Canada geese (dusky Canada geese closed)
 - 6 white geese
 - 10 white-fronted geese



SW Goose Public Comments

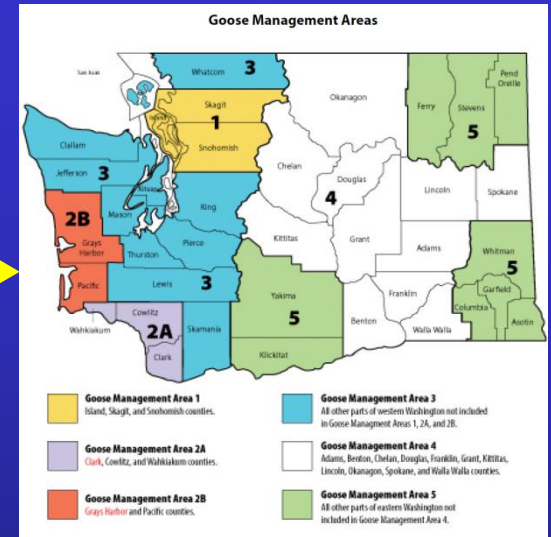
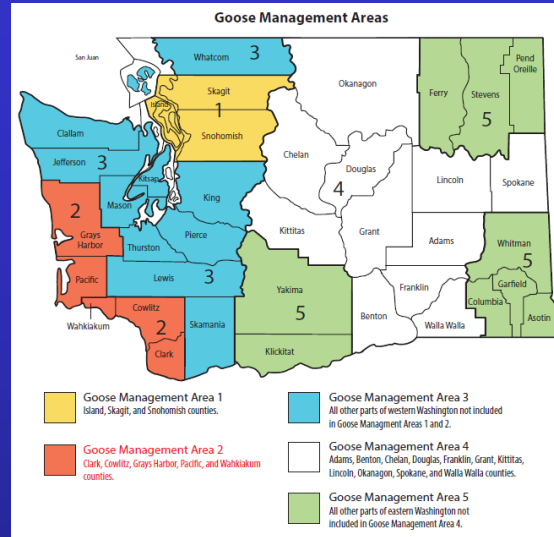
Objectives:

- Maintain dusky Canada goose abundance, distribution, and winter survival.
- Maximize length and timing of the goose season to address depredation concerns.
- Reduce agency costs.
- Reduce regulation complexity and hunter reporting requirements.



SW Goose Zones and Season

- Appropriate zones and season timing?

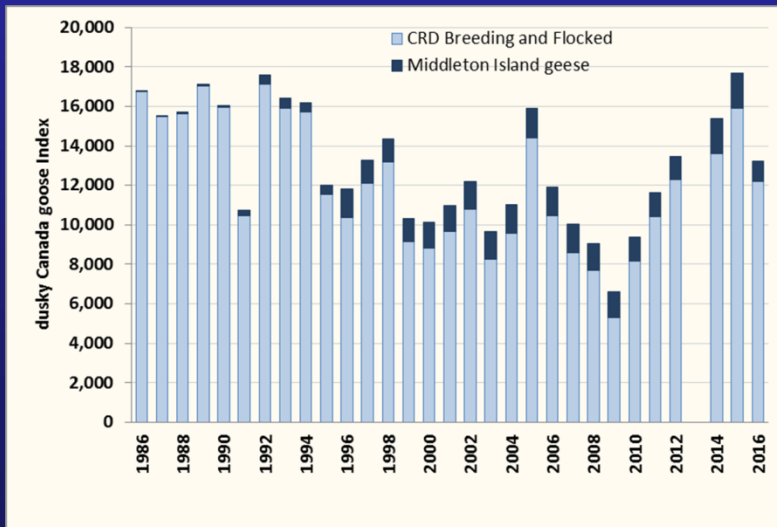


Alternative Season Scenarios	September		October				November				December				January				February				March	
	w1	w2	w3	w4	w1	w2	w3	w4	w1	w2	w3	w4	w1	w2	w3	w4	w1	w2	w3	w4	w1	w2		
A continuous, no split no late																								
B late split; 3 splits																								
C no change; 3 splits																								
D EVEN SPLIT OPTION																								
E mid split, shorter late																								
F 1 late split; no change late																								
G late split, short late; 3 splits																								
H 3 split; similar to previous?																								
I continuous, no splits																								

2016-17 SW Goose Season Recent Changes

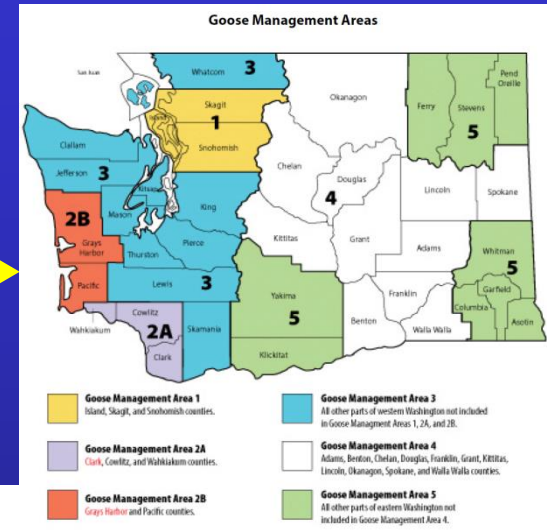
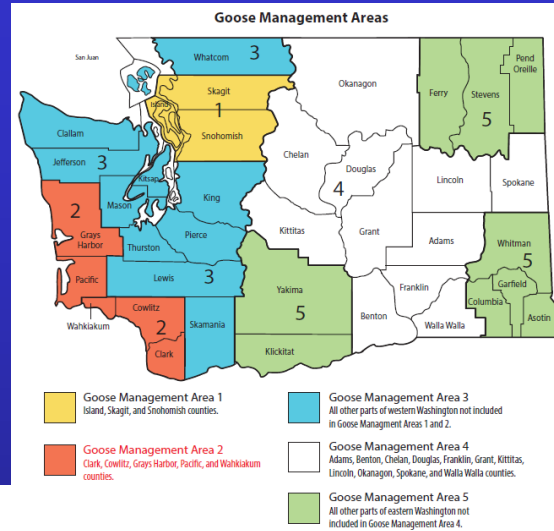
Area 2 proposed season dates; why?

- Arrival to PNW
 - 31 Oct = CRD
 - 5 Nov = MI
 - 14 Nov = PWS



SW Goose Zones and Season

- Appropriate zones and season timing?



Alternative Scenario

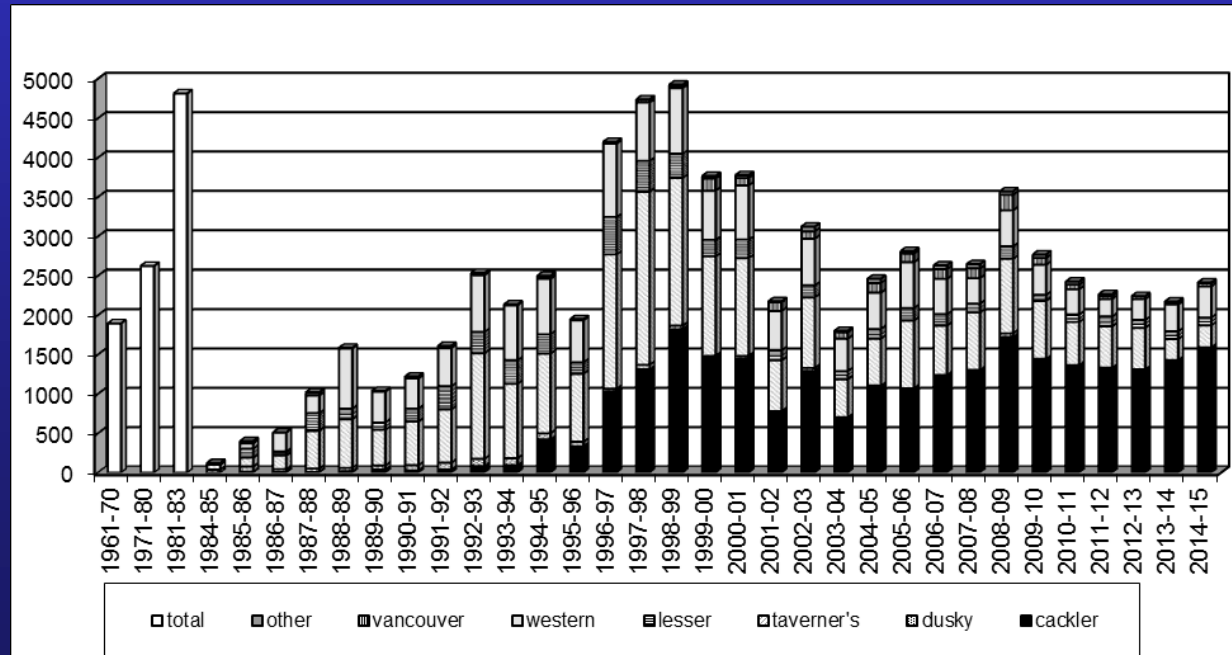
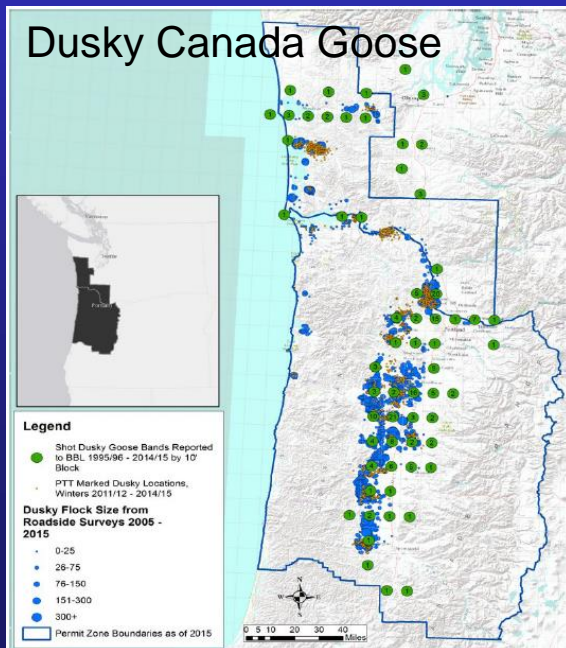
2017-2018 season windows

Oct 14	Oct 22	4	12	1	9	96	2	9	0	107
Nov 25	Jan 21	4	12	2	58					
Feb 10	Mar 10	4	12	3	29					
Oct 14	Oct 29	4	12	1	16	96	2	9	0	107
Nov 25	Jan 14	4	12	2	51					
Feb 10	Mar 10	4	12	3	29					
Oct 14	Oct 29	4	12	1	16	96	2	9	0	107
Nov 22	Dec 3	4	12	2	12					
Dec 23	Feb 28	4	12	3	68					
Oct 14	Nov 26	4	12	1	44	96	2	9	0	107
Dec 23	Jan 17	4	12	2	26					
Feb 3	Feb 28	4	12	3	26					

SW Goose Season: What We Know

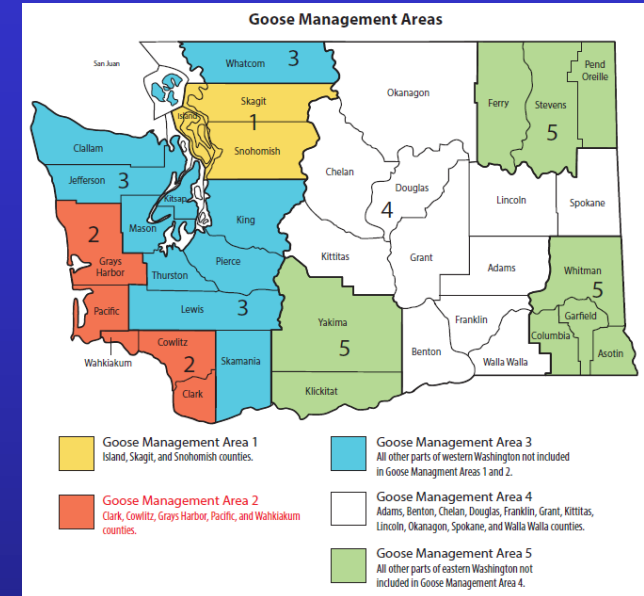


Dusky Encountered Harvest						
	November	December	January	February	March	Total Harvest
2012-2013	2	5	7	0	0	14
2013-2014	4	7	1	0	2	14
2014-2015	1	6	6	2	1	16
2015-2016	5	1	6	0	0	12
2016-2017	0	3	5	2	1	11
Total	12	22	25	4	4	67



SW Goose Zones and Season

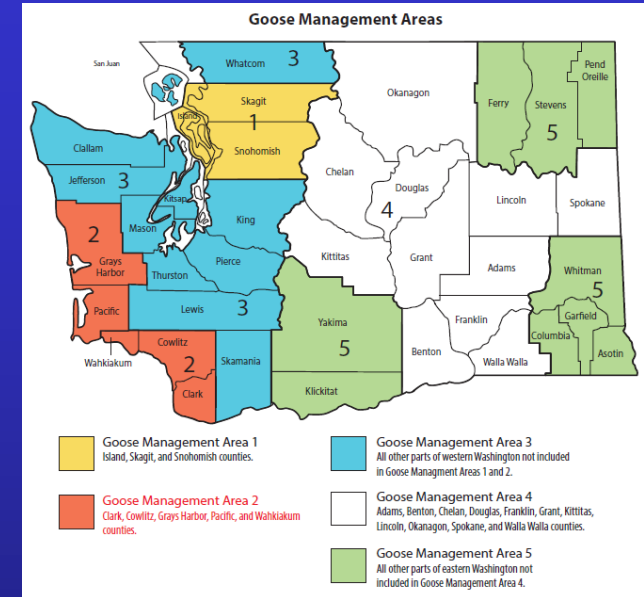
- Appropriate zones and season timing?
- Proposed Changes (p. 6):



Period	Start	End	# days
First	Oct 14	Oct 29	7-days per week
Second	Nov 25	Jan 14	Sat, Sun, Wed only* - Ridgefield NWR hunts Tues, Thurs, Sat
Third	Feb 10	Mar 10	Sat, Sun, Wed only

SW Goose Zones and Season

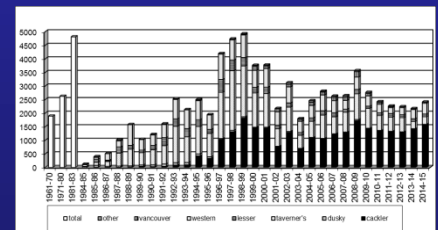
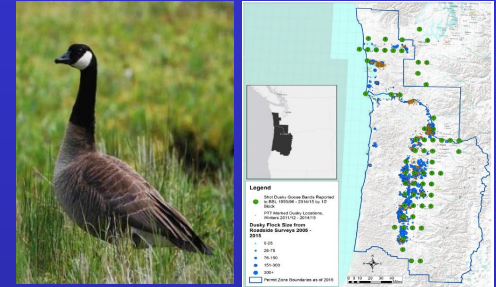
- Appropriate zones and season timing?
- Proposed Changes (p. 6):



Dusky Zone (GMA2)	OR 2016-2017	WA current	WA	WA proposed	WA	WA		
# Hunt Period	Windows & Days	Windows	Hunt Days	Windows	Hunt Days	DIFFERENCE	NOTES	
First	9	9	9	5	16	16	11	starting one week prior to OR, ending same date.
Second	52	58	58	26	51	23	-3	starting one week after OR, ending one week after OR
Third	35	26	26	12	29	13	1	starting one week after OR, ending same date.
subtotal	96	93	93	43	96	52	9	
Youth + Sept dates	11	11	11	11	11	11	0	
	107	104	104	54	107	63	9	

SW Goose Zone and Season Needs

- Dusky Canada Goose monitoring
- Appropriate **zones** and **season timing** to balance sport harvest and agricultural depredation with Dusky Canada conservation
 - Input: public, regional, enforcement
 - Stated strategies regarding # days in relation to Dusky population status
- Harvest reporting card
- Clarification of public lands intent



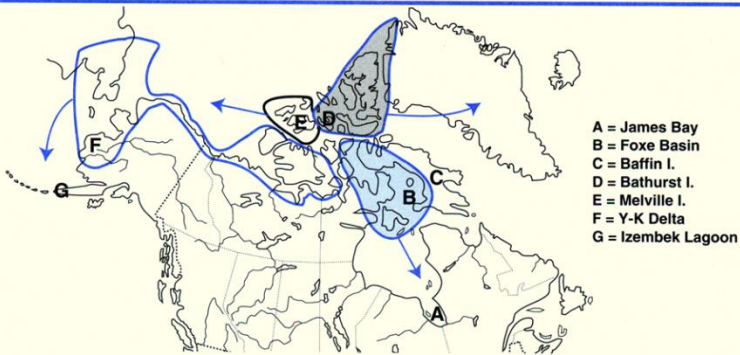
Alternative Season Scenarios	September		October		November		December		January		February		March	
	w1	w2	w1	w2	w1	w2	w1	w2	w1	w2	w1	w2	w1	w2
A continuous, no split, no late														
B late split; 3 splits														
C no change; 3 splits														
D EVEN SPLIT OPTION														
E mid split, shorter late														
F 1 late split; no change late														
G late split, short late; 3 splits														
H 3 split; similar to previous?														
I continuous, no splits														

Brant Midwinter Survey Trends

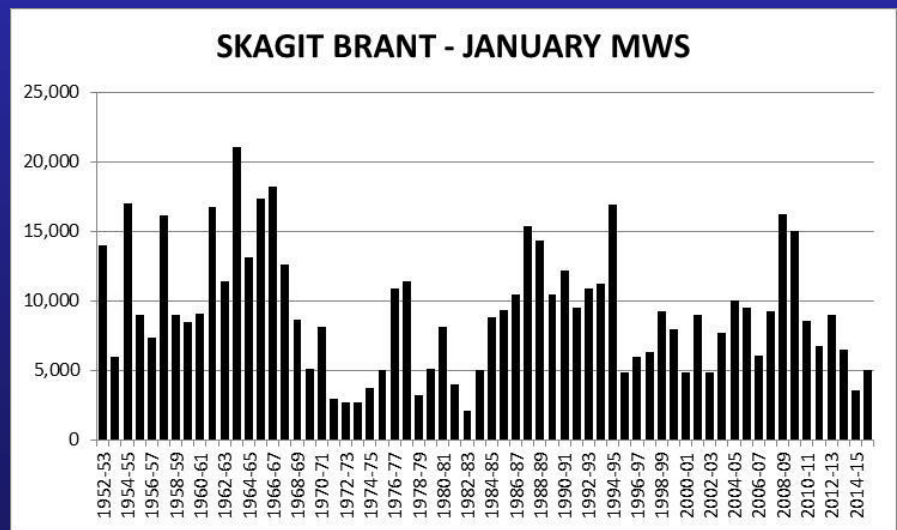
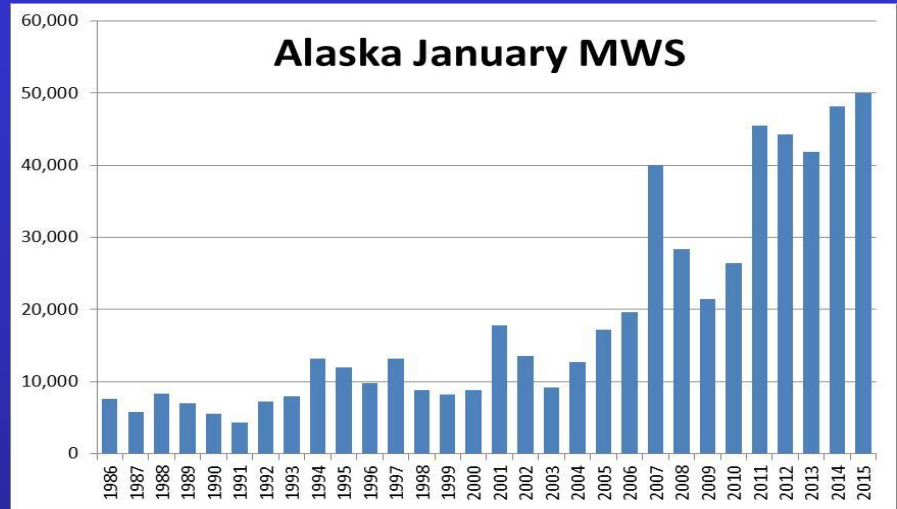


The American Ornithologists' Union

A. REED, D. H. WARD, D. V. DERKSEN,
AND J. S. SEDINGER



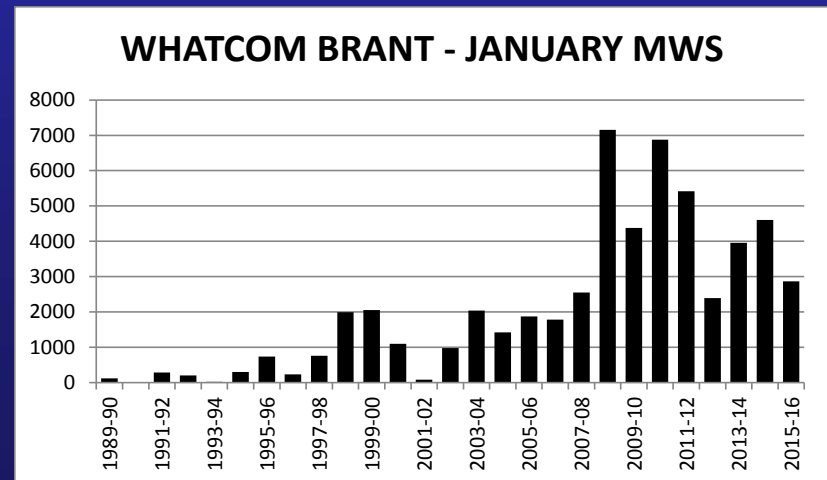
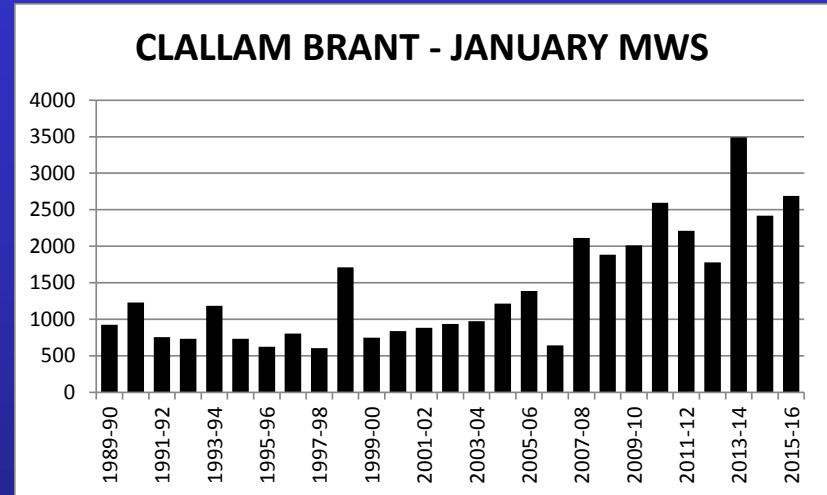
- **Atlantic Brant** (*Branta bernicla hrota*).
Breeds around Foxe Basin in eastern low Arctic; winters on Atlantic coast of U.S.
- **Eastern High-Arctic Brant** (*B. b. hrota*).
Breeds on islands of eastern high Arctic and on Greenland; migrates via Greenland and Iceland to winter mainly in Ireland.
- **Black Brant** (*B. b. nigricans*).
Breeds in central and western low Arctic, in Alaska, and in western Russia; winters along Pacific coast, mainly in Mexico.
- **Western High-Arctic Brant** (intermediate between *hrota* and *nigricans*).
Breeds on islands of western high Arctic and winters in Puget Sound, WA.



2017-18 Brant Season Proposal

WAC 232-28-436

- Numbers of Brant have increased over the last 25 years
- <25% WHA Brant (3-yr avg.) assessed through population surveys or bag checks (PFC Brant Plan harvest strategy)
- **Proposed Changes** (p. 12-13):
 - Open in Clallam and Whatcom Counties 3 set dates
 - Requires authorization and harvest report card

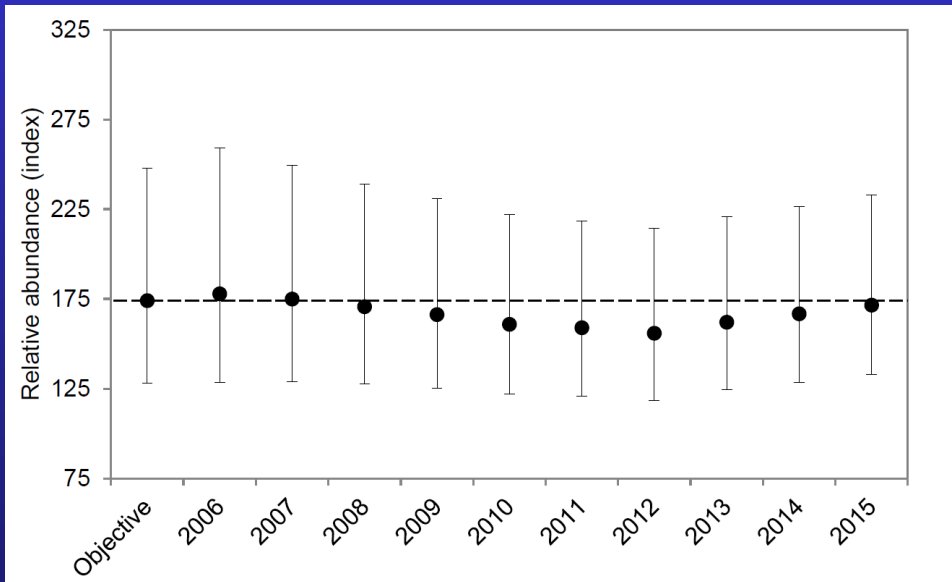


Status of Other Migratory Bird Populations and Season Proposals

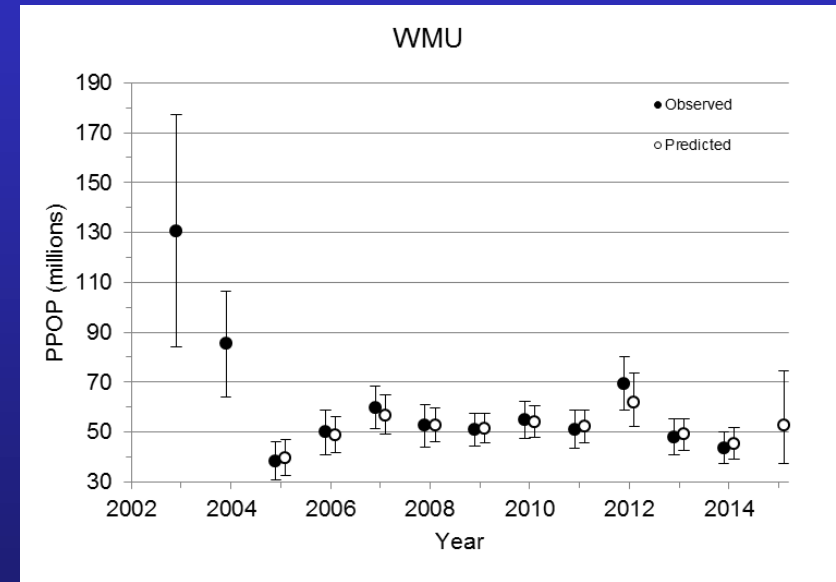


Status of Other Migratory Bird Populations and Season Proposals

WAC 232-28-436



Band-tailed Pigeons



Mourning Doves

Recommend same seasons as last year.

Questions?

