



# *Land Transactions*

June 2 & 3, 2017

# Acquisition Steps

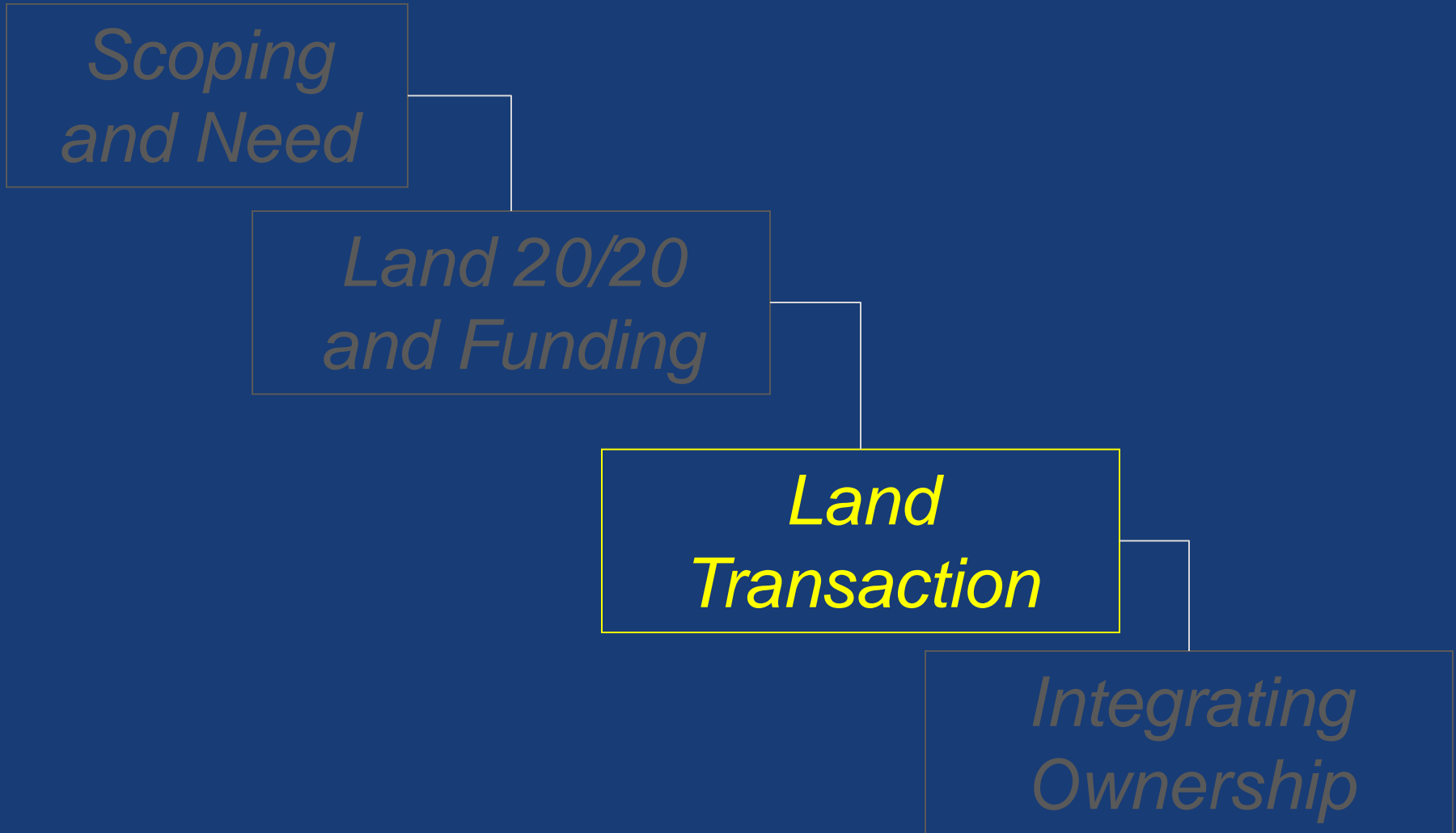
Scoping  
and Need

Lands 20/20  
and  
Funding

Land Transaction

Integrating  
Ownership

# Acquisition Steps



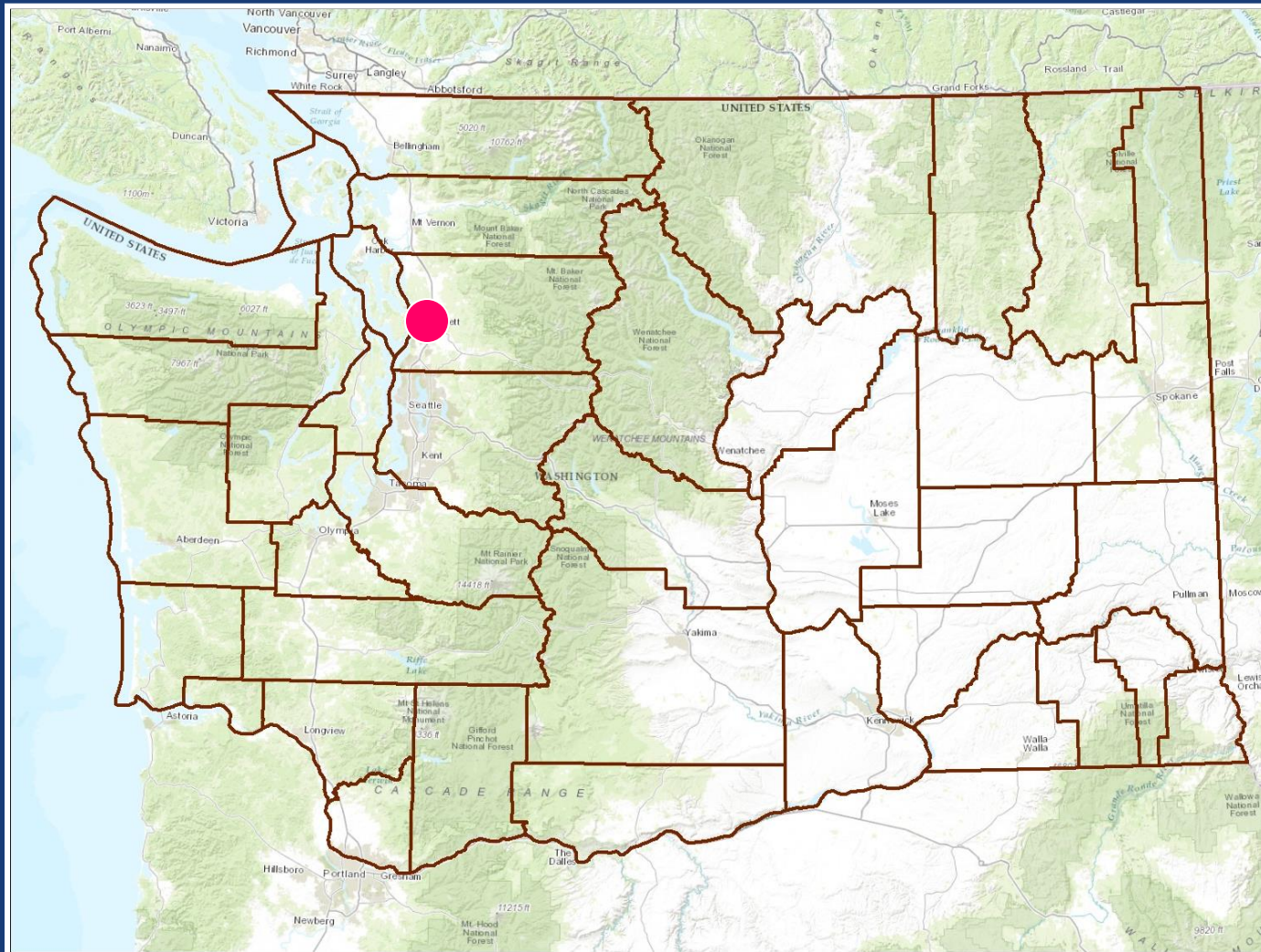


# Land Transaction Stages

- Appraisal
- Appraisal Review
- Negotiations
- Purchase and Sale Agreement
- Fish and Wildlife Commission Approval
- Close

# Alexander Property

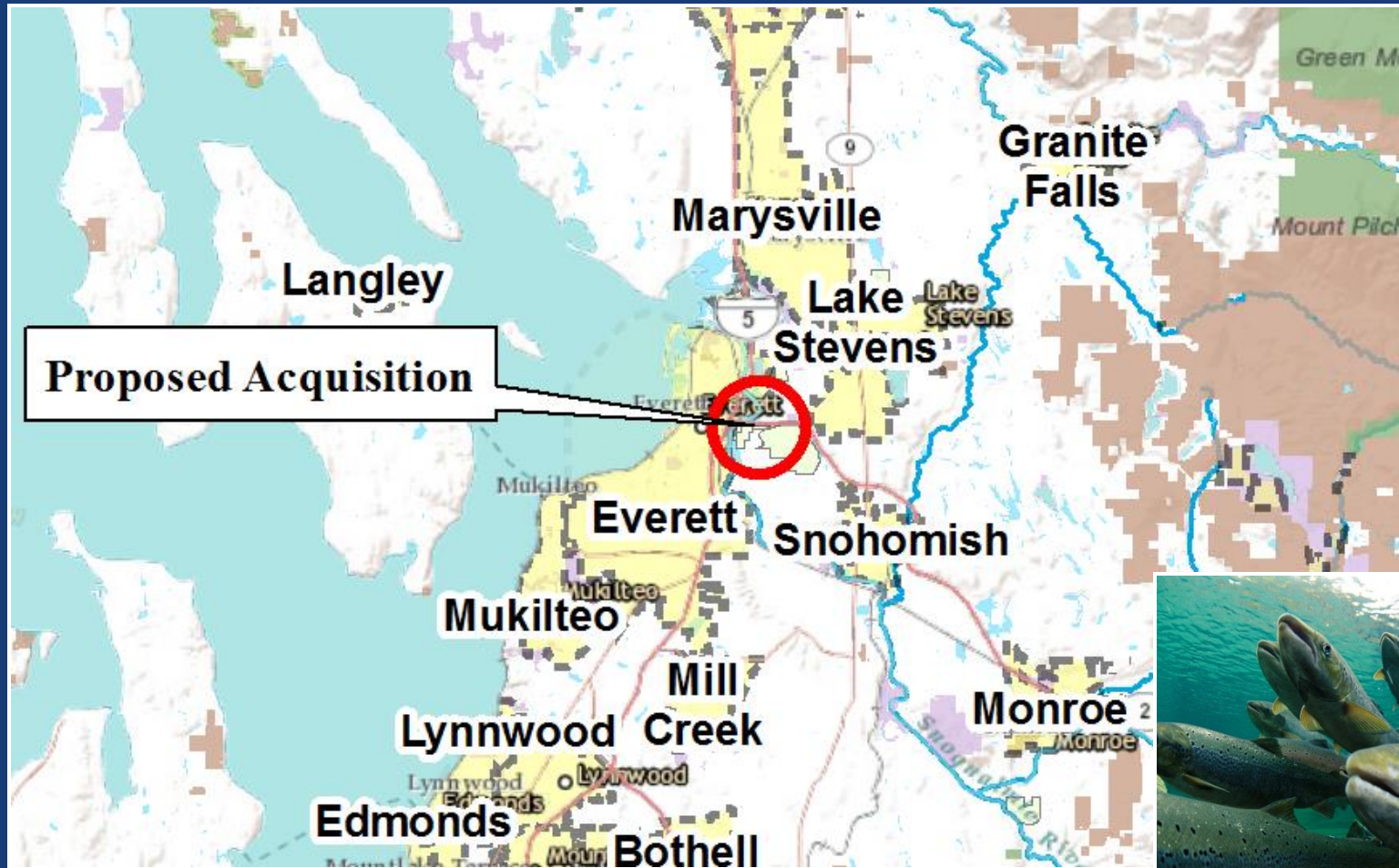
## Snoqualmie WLA, Snohomish County





# Alexander Property

## Snoqualmie WLA, Snohomish County

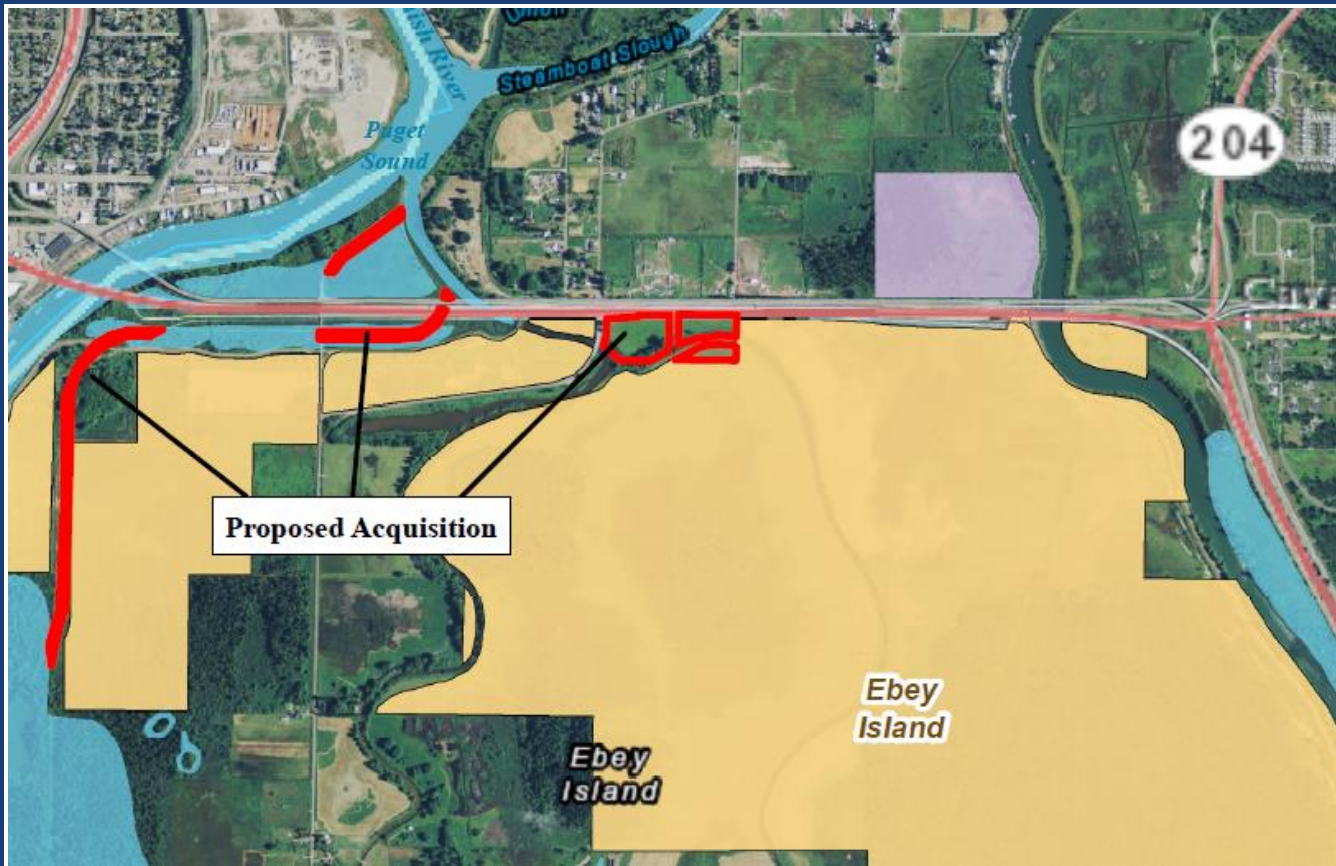


~18 acres



# Alexander Property

## Snoqualmie WLA, Snohomish County



Appraised  
Value  
\$61,900



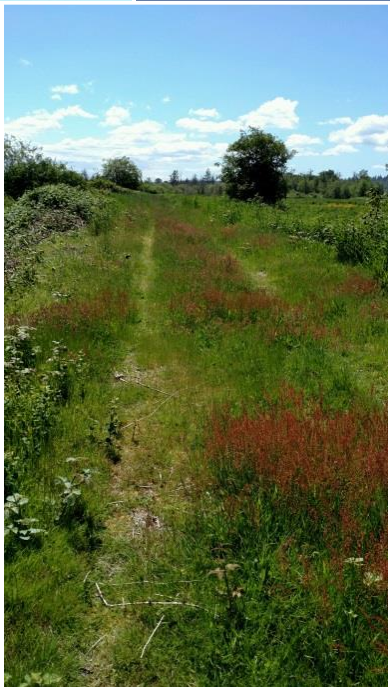


# Alexander Property

## Snoqualmie WLA, Snohomish County



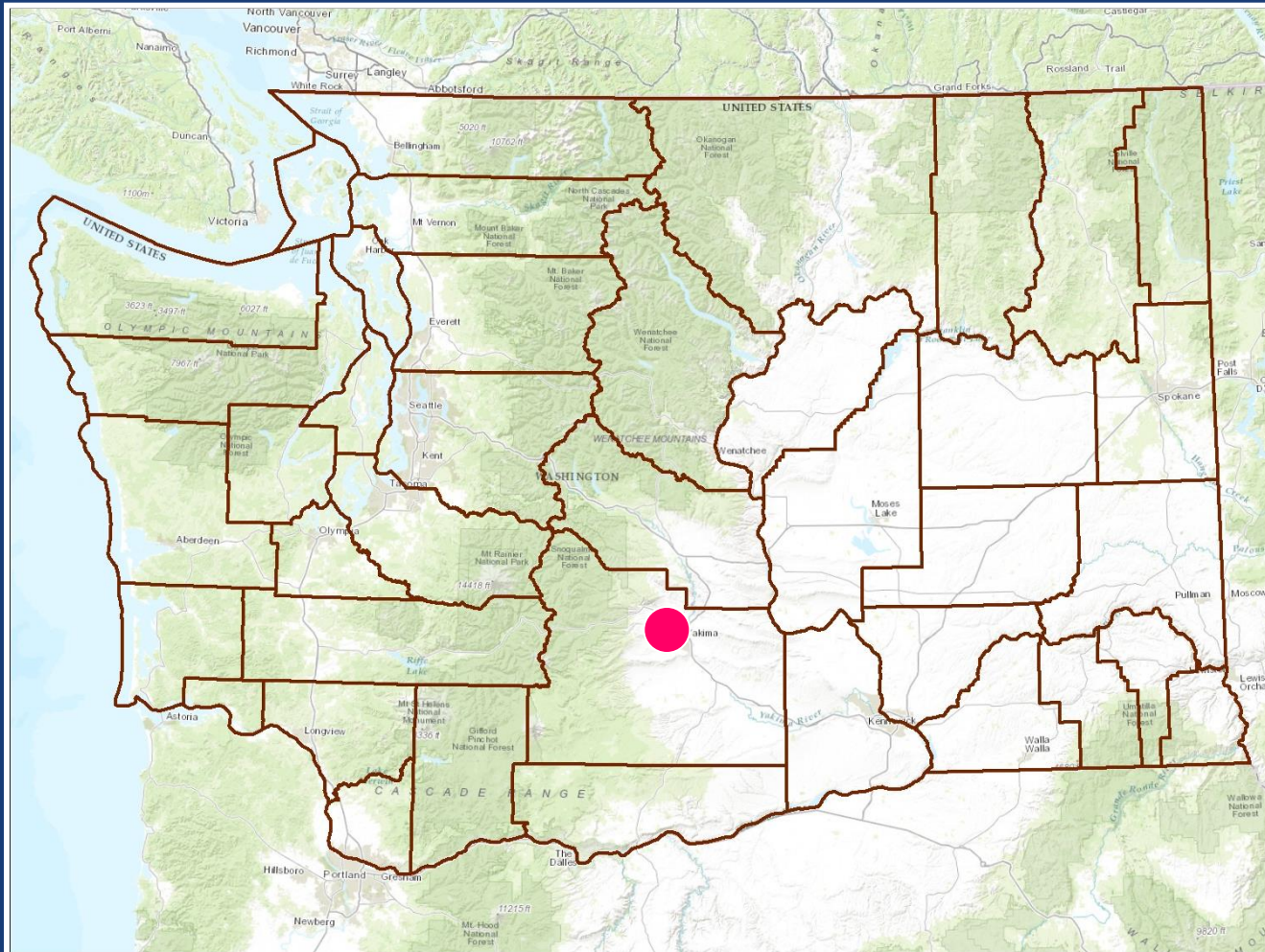
Annual O & M  
\$ 234





# Sunnyside Properties

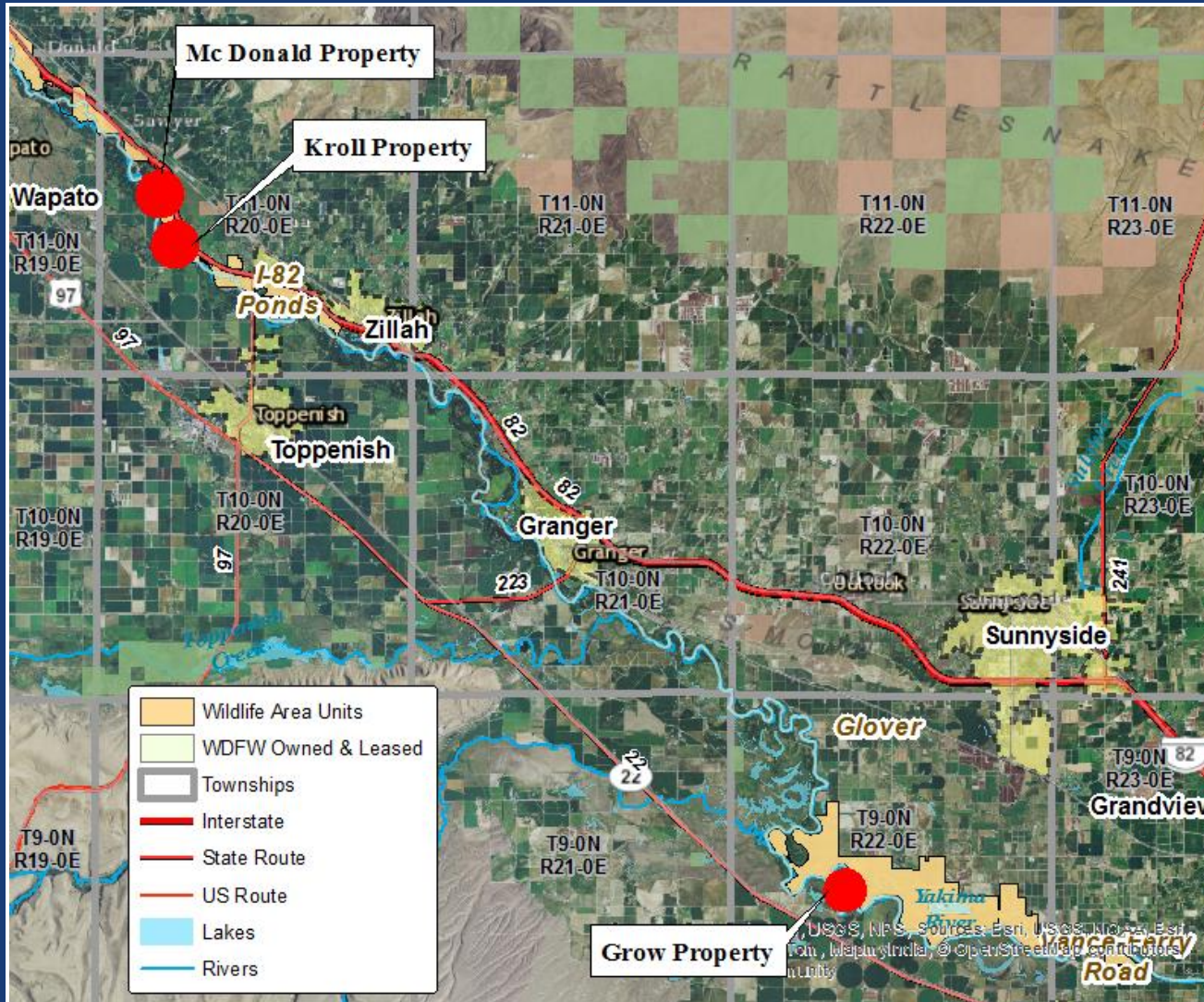
## Sunnyside WLA, Yakima County





# Sunnyside Properties

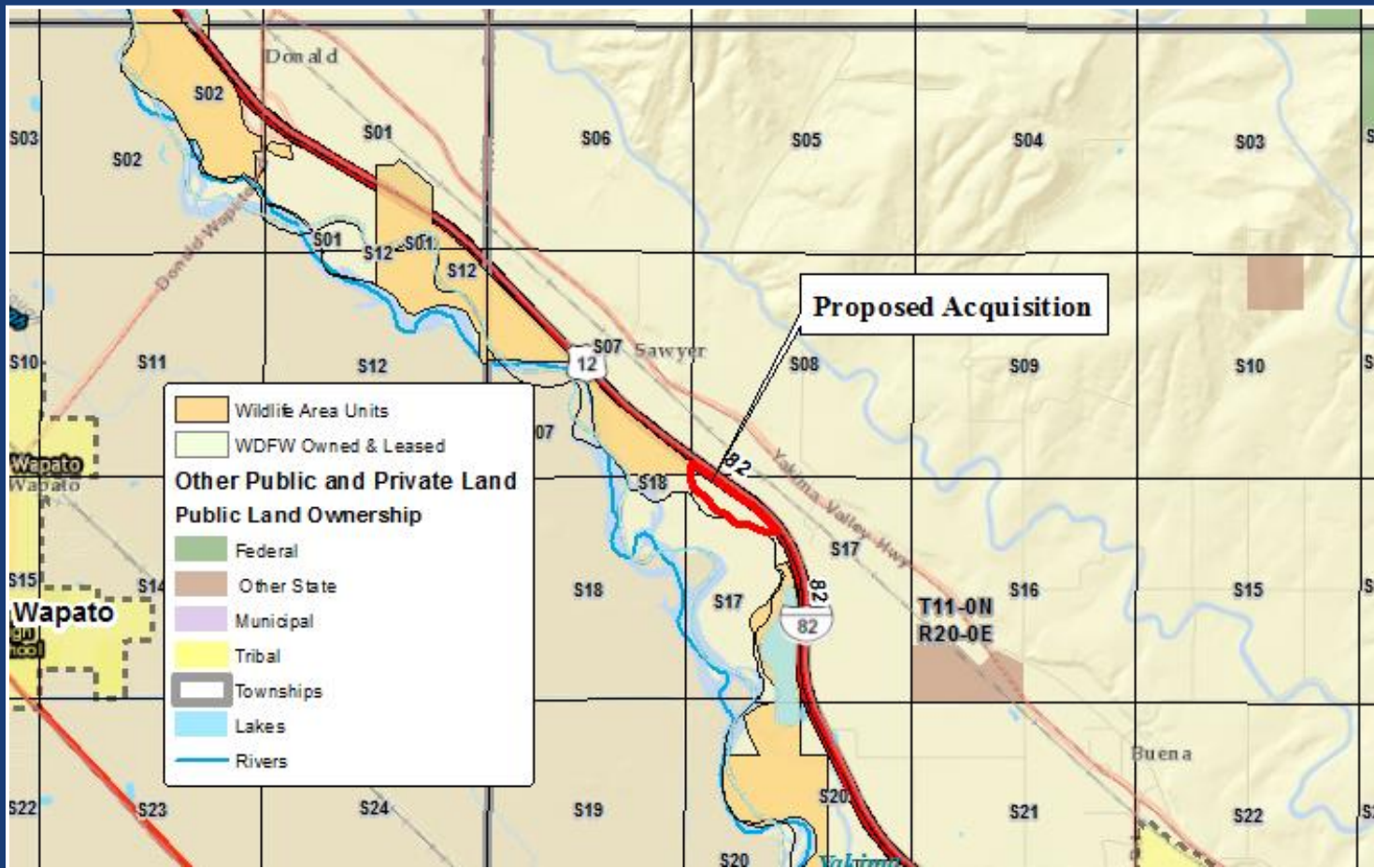
## Sunnyside WLA, Yakima County





# McDonald Property

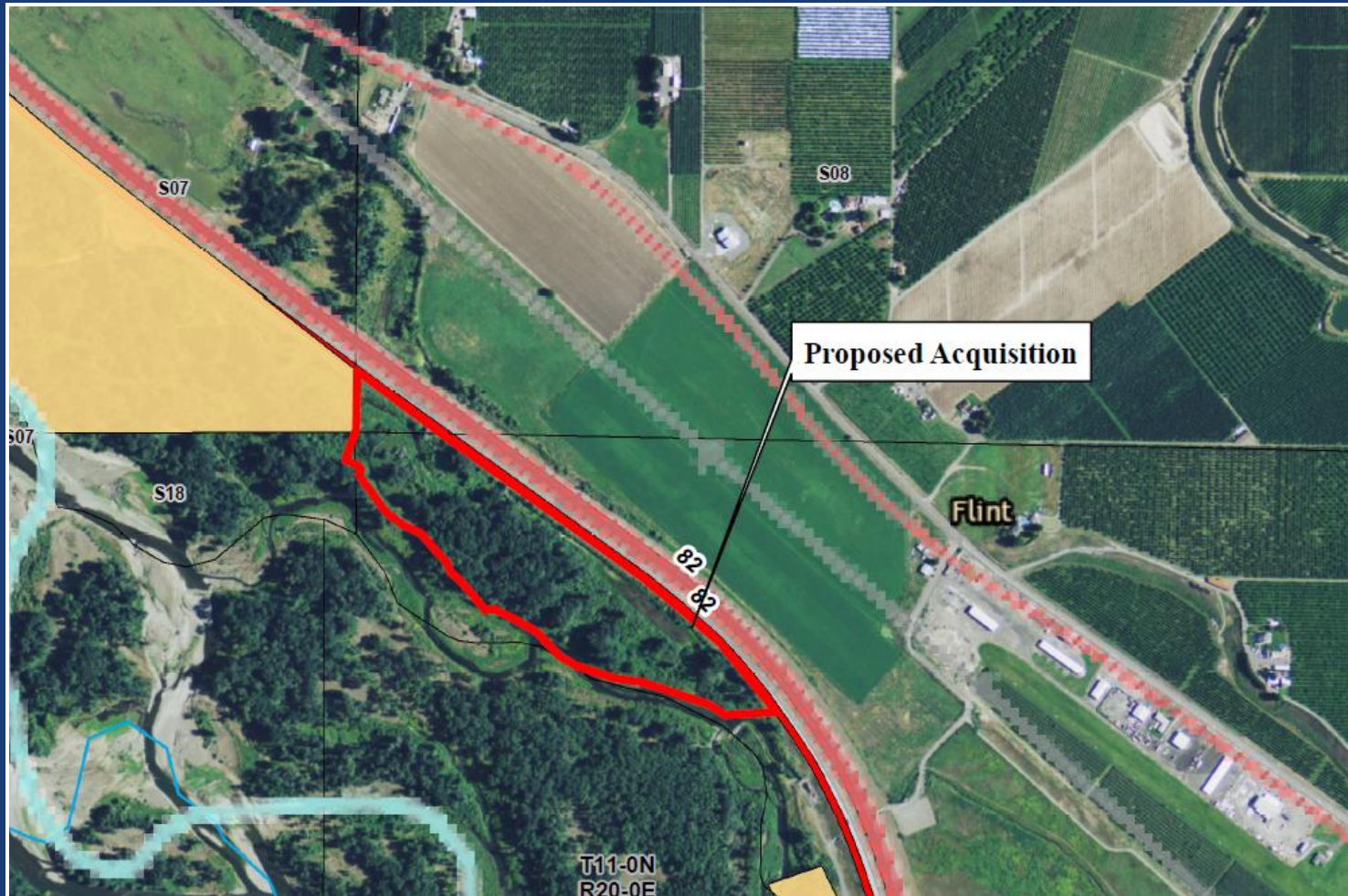
## Sunnyside WLA, Yakima County



~ 27 acres

# McDonald Property

## Sunnyside WLA, Yakima County



Appraised  
Value  
\$36,400

PILT =  
\$128/year



# McDonald Property

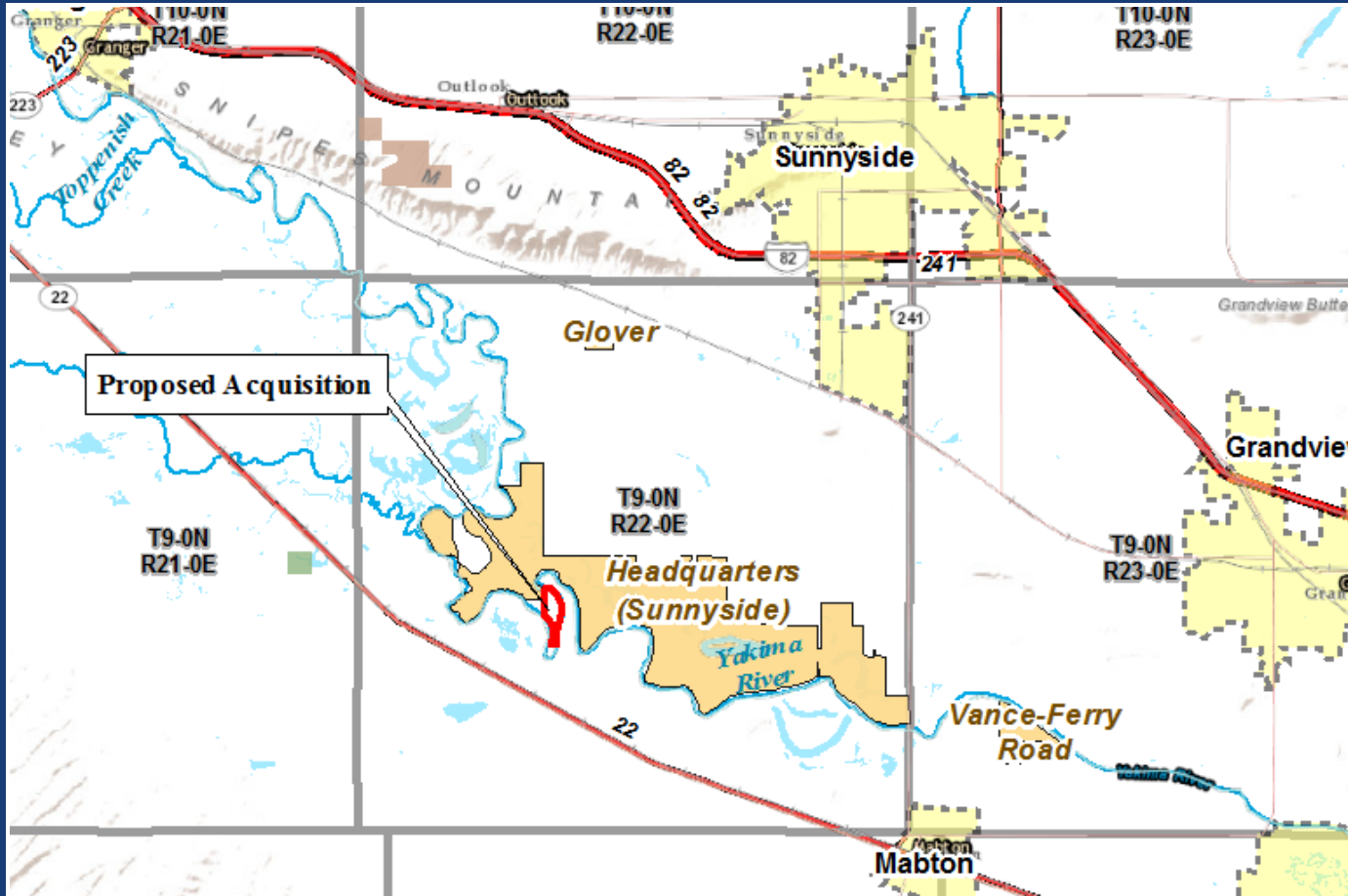
## Sunnyside WLA, Yakima County





# Grow Property

## Sunnyside WLA, Yakima County

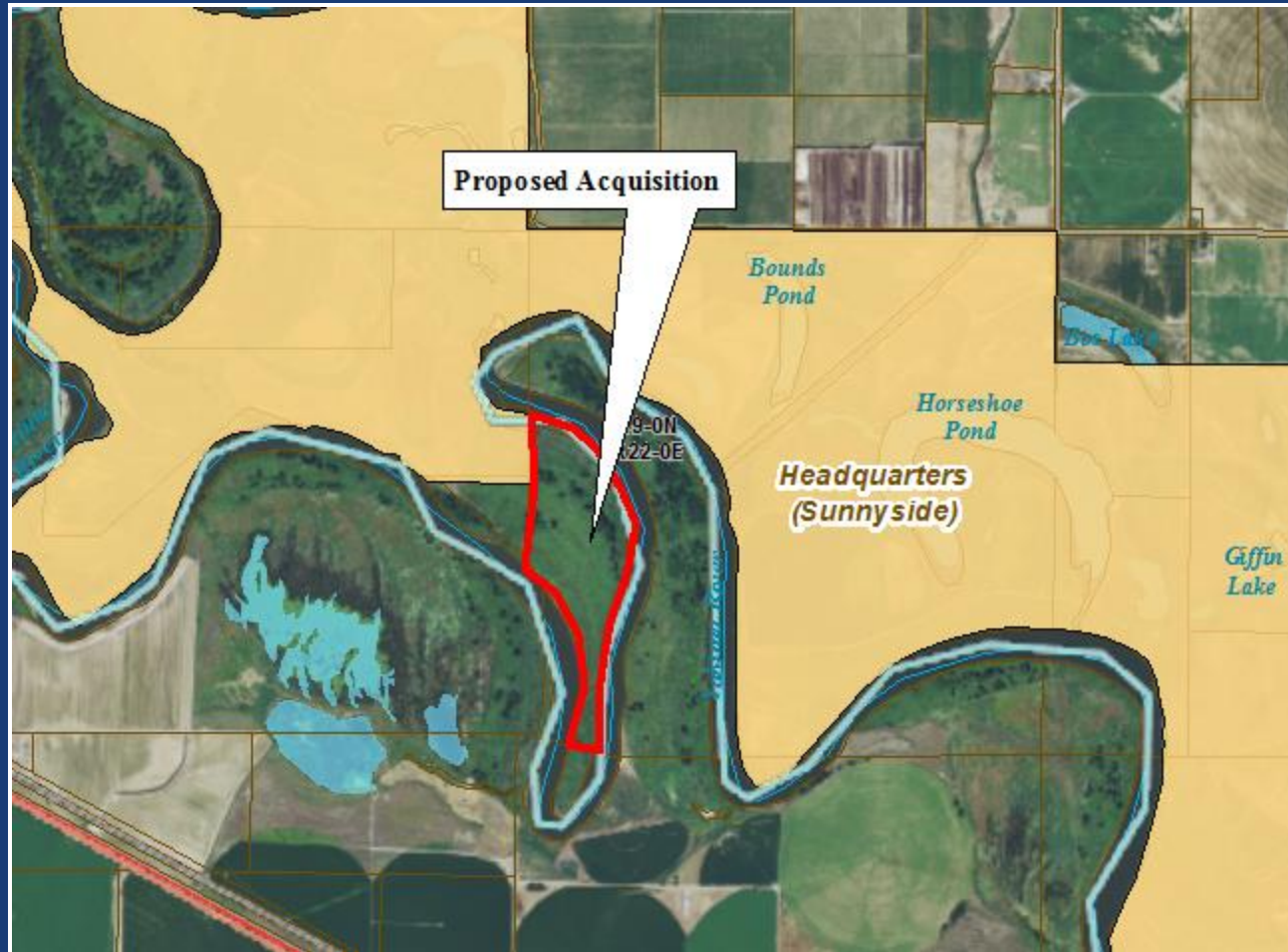


~ 41 acres



# Grow Property

## Sunnyside WLA, Yakima County



Appraised  
Value  
\$65,000

PILT =  
\$194/year



# Grow Property

## Sunnyside WLA, Yakima County





# Kroll Property

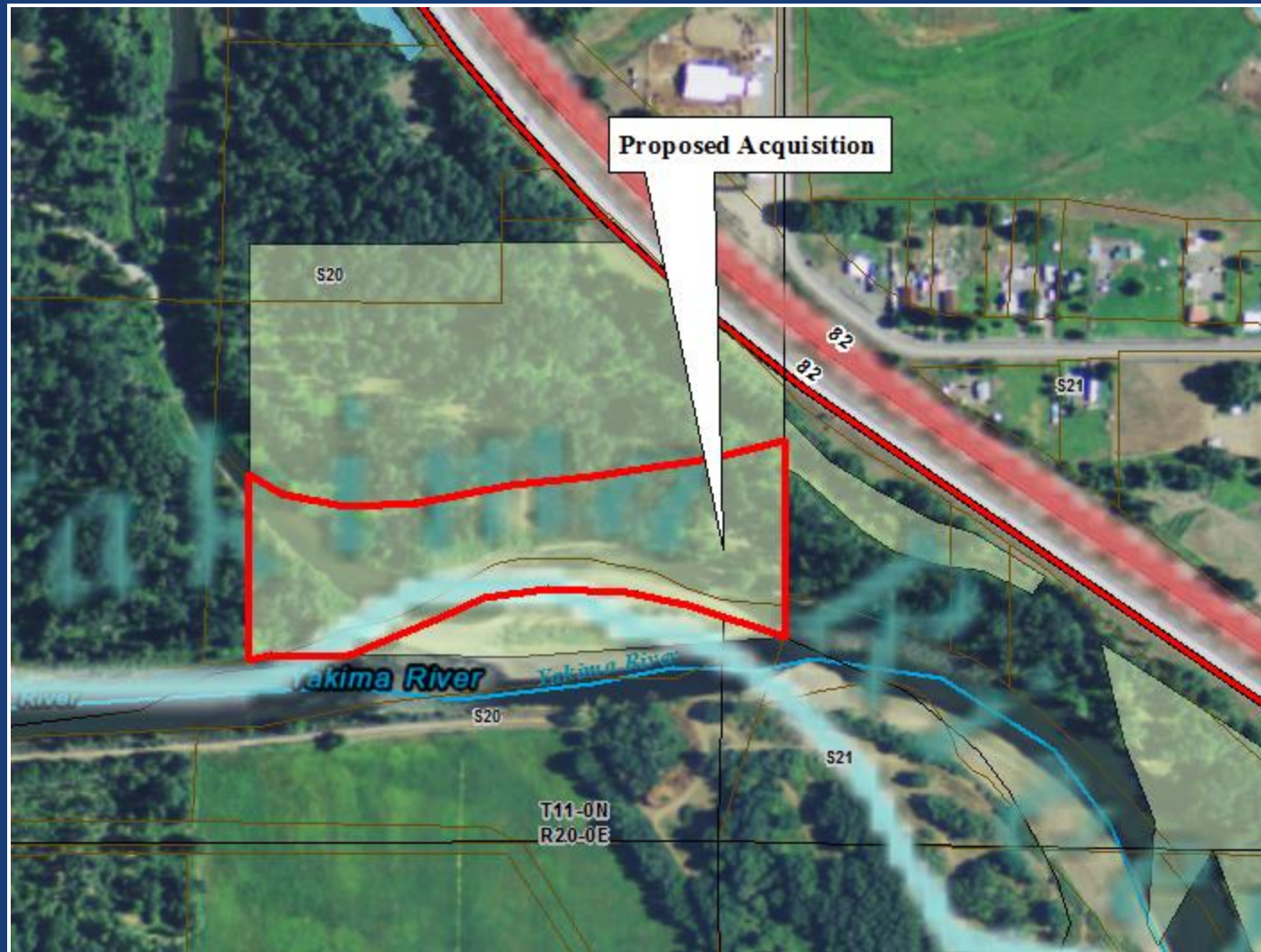
## Sunnyside WLA, Yakima County



~ 9 acres

# Kroll Property

## Sunnyside WLA, Yakima County



Appraised  
Value  
\$16,000

PILT  
\$43/year



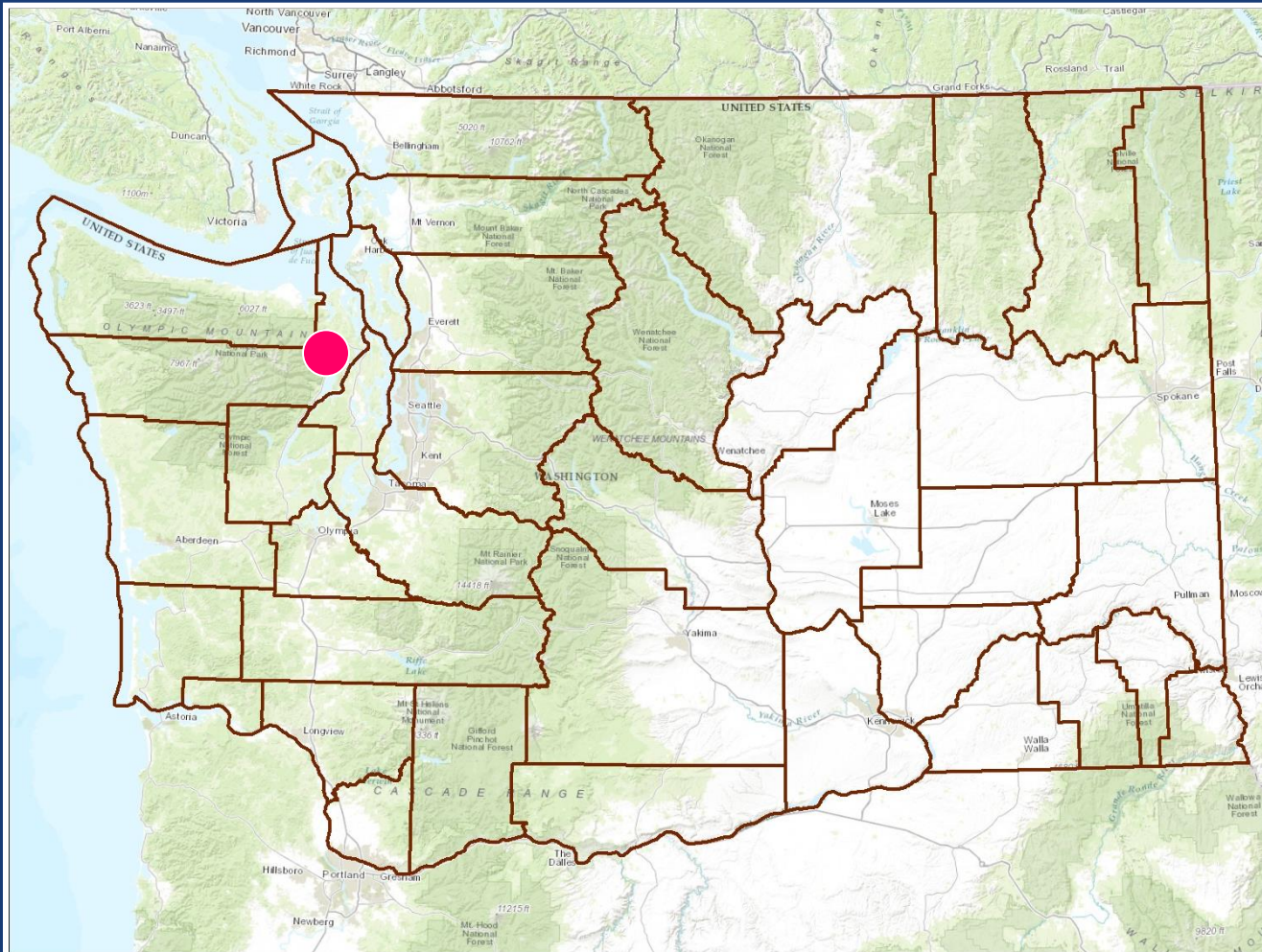
# Kroll Property

## Sunnyside WLA, Yakima County





# Point Whitney Lease Jefferson County



10-year  
lease  
renewal  
~ 156 sq. ft



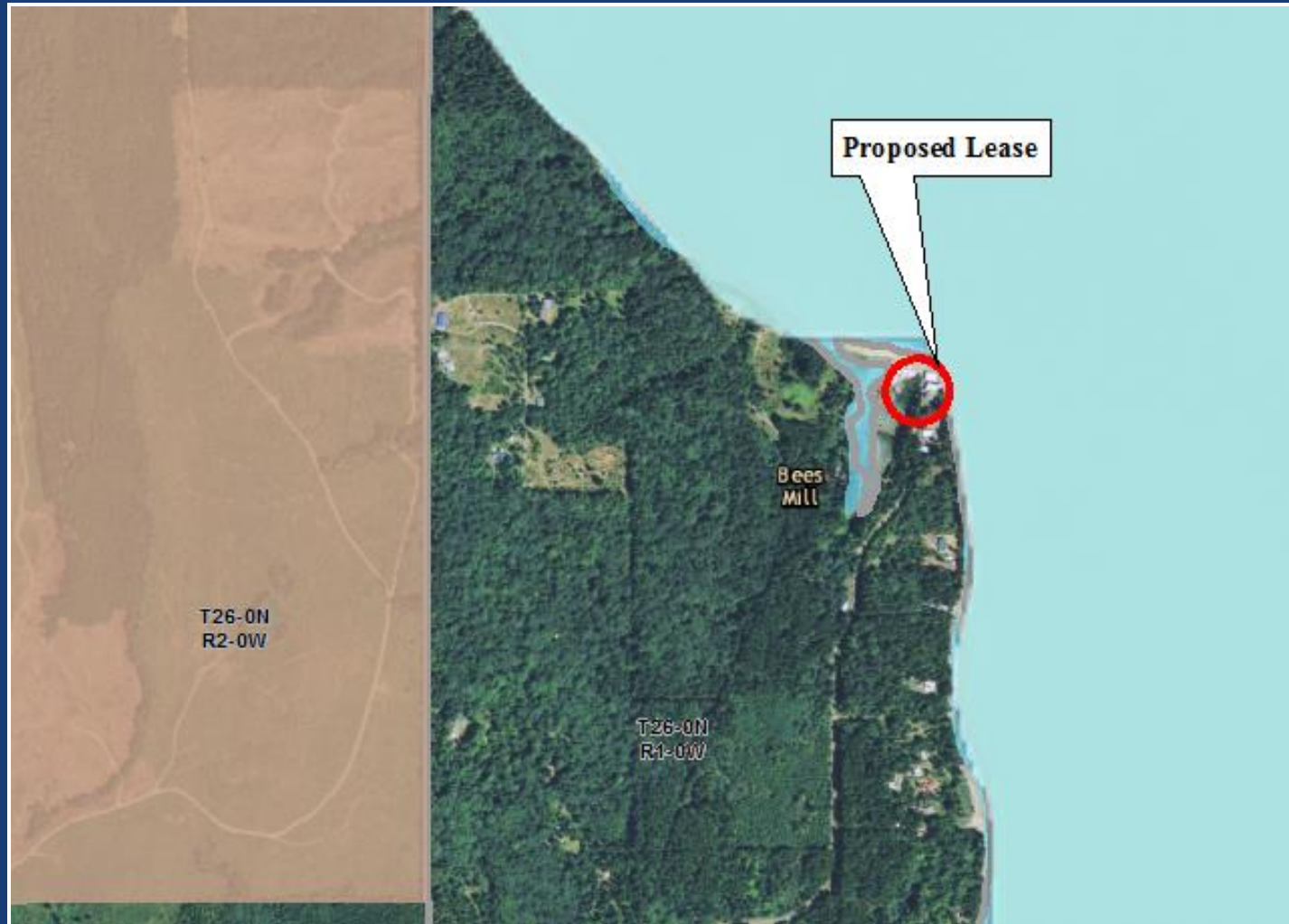
# Point Whitney Lease

## Jefferson County



# Point Whitney Lease

## Jefferson County





# Point Whitney Lease

## Jefferson County







# PUBLIC COMMENT

## *Land Transactions*

June 2 & 3, 2017