

PROPOSED LAND TRANSACTIONS

TABLE OF CONTENTS

January 19, 2017

Decision Page.....		i
Budget Page.....		ii
Proposed Acquisition	Gervol Property Whatcom County	
Highways Map		1a
Aerial Map		1b
Proposed Acquisition	Kettle River Access Ferry County	
Highways Map		2a
Aerial Map		2b

Summary Sheet

Meeting dates: January 19, 2018 COMMISSION MEETING
Agenda item: PROPOSED LAND TRANSACTIONS
Presenter(s): Julie Sandberg, Real Estate Services Section Manager

Background summary:

ITEM 1: Gervol Property – This acquisition is for 1.3 (+/-) acres in Whatcom County and is part of the larger Lower Nooksack River Conservation and Restoration Project. The project is a multi-partner, multi-year effort focused on restoration of floodplain connectivity and habitats along two miles of the tidally influenced Lower Nooksack River. While located in the floodplain this non-agriculture property is outside the levy system and will provide public river access. This parcel will be managed as part of the Whatcom Wildlife Area, Nooksack Unit.

ITEM 2: Kettle River Access Properties - This acquisition of 115 (+/-) acres in Ferry County includes 3.4 miles of undeveloped shoreline along the Kettle River in northern Ferry County. The two parcels, located approximately ten miles northwest of Curlew, will allow WDFW to increase public access to the Kettle River for a variety of non-motorized, water-related recreational activities in this underserved area of the state. The primary recreational opportunities offered by this project are wildlife watching, shoreline and wading access to quality trout fishing and non-motorized boating. The properties will be managed as water access sites included in the Sherman Creek Wildlife Area. The PILT obligation to Ferry County is estimated to be \$782 annually.

Policy issue(s) you are bringing to the Commission for consideration:

Protecting critical fish and wildlife habitat and providing public recreational opportunities.

Public involvement process used and what you learned:

Item 1 is funded by a grant through the National Coastal Wetland Conservation Program and was approved through the agency's Lands 20/20 in the summer of 2017.

Item 2 is funded by a grant from the Recreation and Conservation Office through the Washington Wildlife and Recreation Program (WWRP) and was approved through the agency's Lands 20/20 process in 2014.

Action requested:

Approval of the proposed land transactions as presented.

Draft motion language:

Move to approve the acceptance of these items.

Justification for Commission action:

This action will provide protection for critical fish and wildlife habitat and enhance public recreation.

Communications Plan:

WDFW will distribute a press release informing the public of this action and proceed to closing.

Budget Detail
 January 19th - 20th, 2018
 Fish and Wildlife Commission
 Land Transaction Agenda Item

Item 1	Acres	Purchase Price	Project or Grant Name	Fund Source	Original Grant Amount	Pre Action Balance	Post Action Balance
<i>Gervol</i>	1.3 (+/-)	\$ 40,000.00	Lower Nooksack River Conservation & Restoration	USFWS-Coastal Wetlands Conservation Grant	\$ 759,281.00	\$ 577,092.62	\$ 535,892.62
Item 2	Acres	Purchase Price	Project or Grant Name	Fund Source	Original Grant Amount	Pre Action Balance	Post Action Balance
<i>Kettle River</i>	115 (+/-)	\$ 374,000.00	Kettle River Access	RCO-WWRP-WA	\$ 995,000.00	\$ 961,082.37	\$ 575,862.37

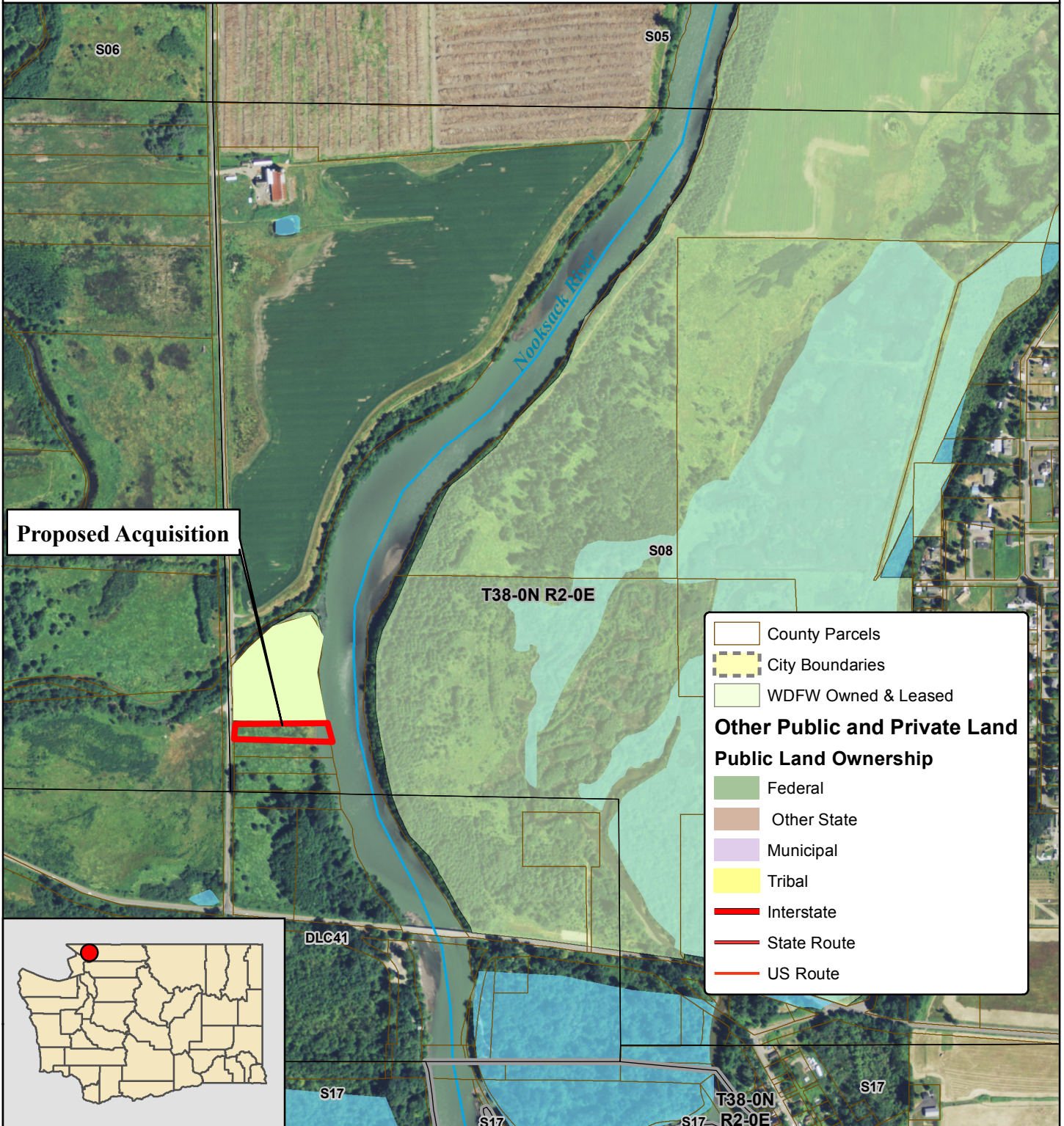
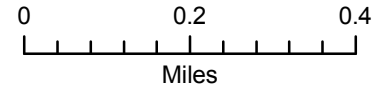
USFWS = United States Fish & Wildlife Service
 RCO = Recreation and Conservation Office
 WWRP = Washington Wildlife and Recreation Program
 CH = Critical Habitat
 WA = Water Access

ITEM 1: GERVOL PROPERTY

COUNTY: WHATCOM COUNTY

LEGAL: SECTION 8, TOWNSHIP 38N, RANGE 2E, W.M.

ACRES: 1.3 (+/-)

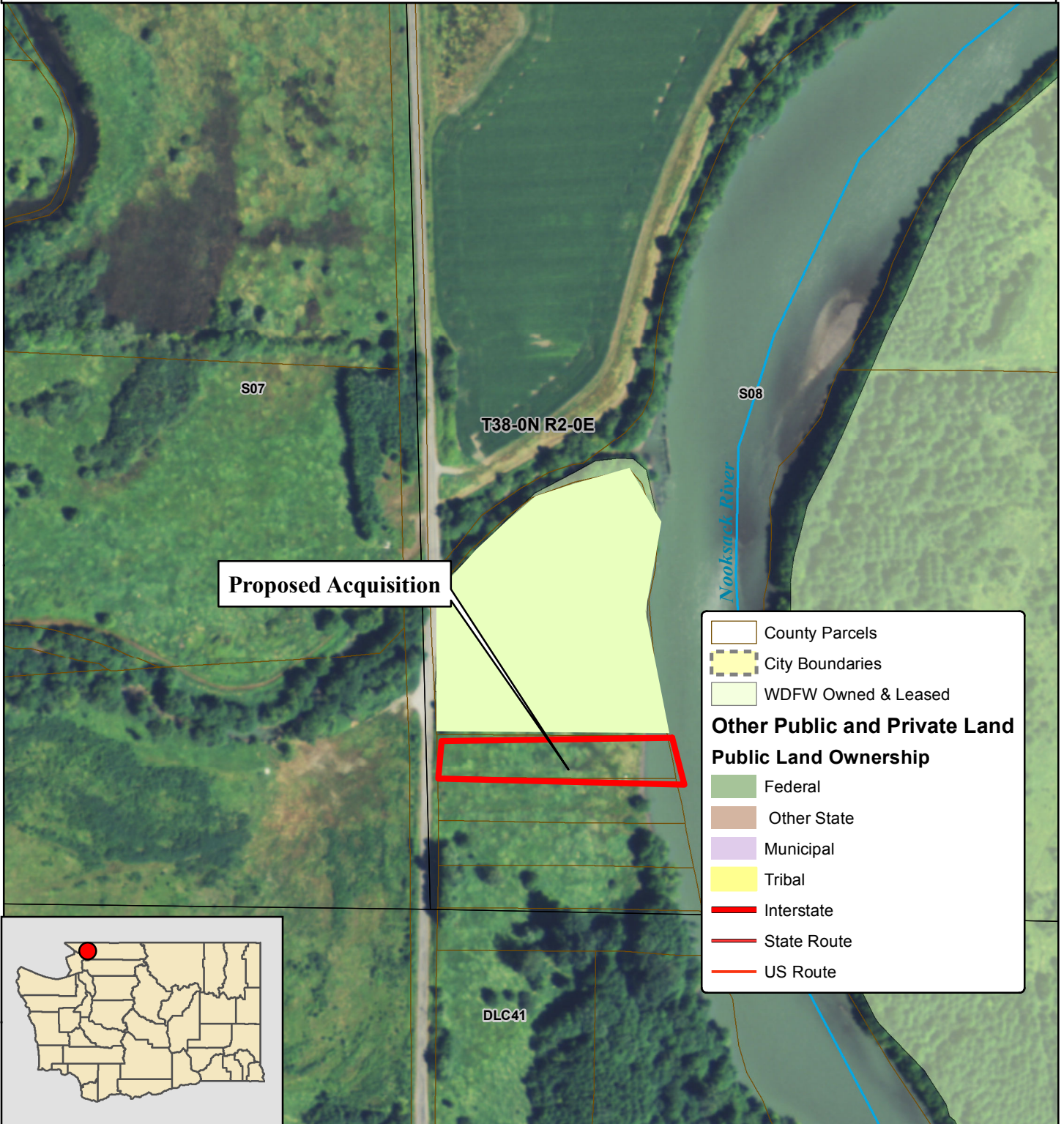
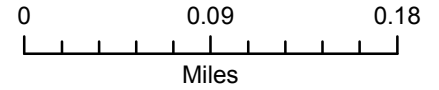


ITEM 1: GERVOL PROPERTY

COUNTY: WHATCOM COUNTY

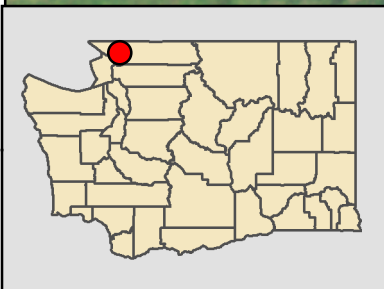
LEGAL: SECTION 8, TOWNSHIP 38N, RANGE 2E, W.M.

ACRES: 1.3 (+/-)



Proposed Acquisition

	County Parcels
	City Boundaries
	WDFW Owned & Leased
Other Public and Private Land	
Public Land Ownership	
	Federal
	Other State
	Municipal
	Tribal
	Interstate
	State Route
	US Route

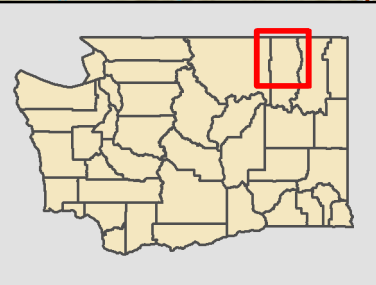
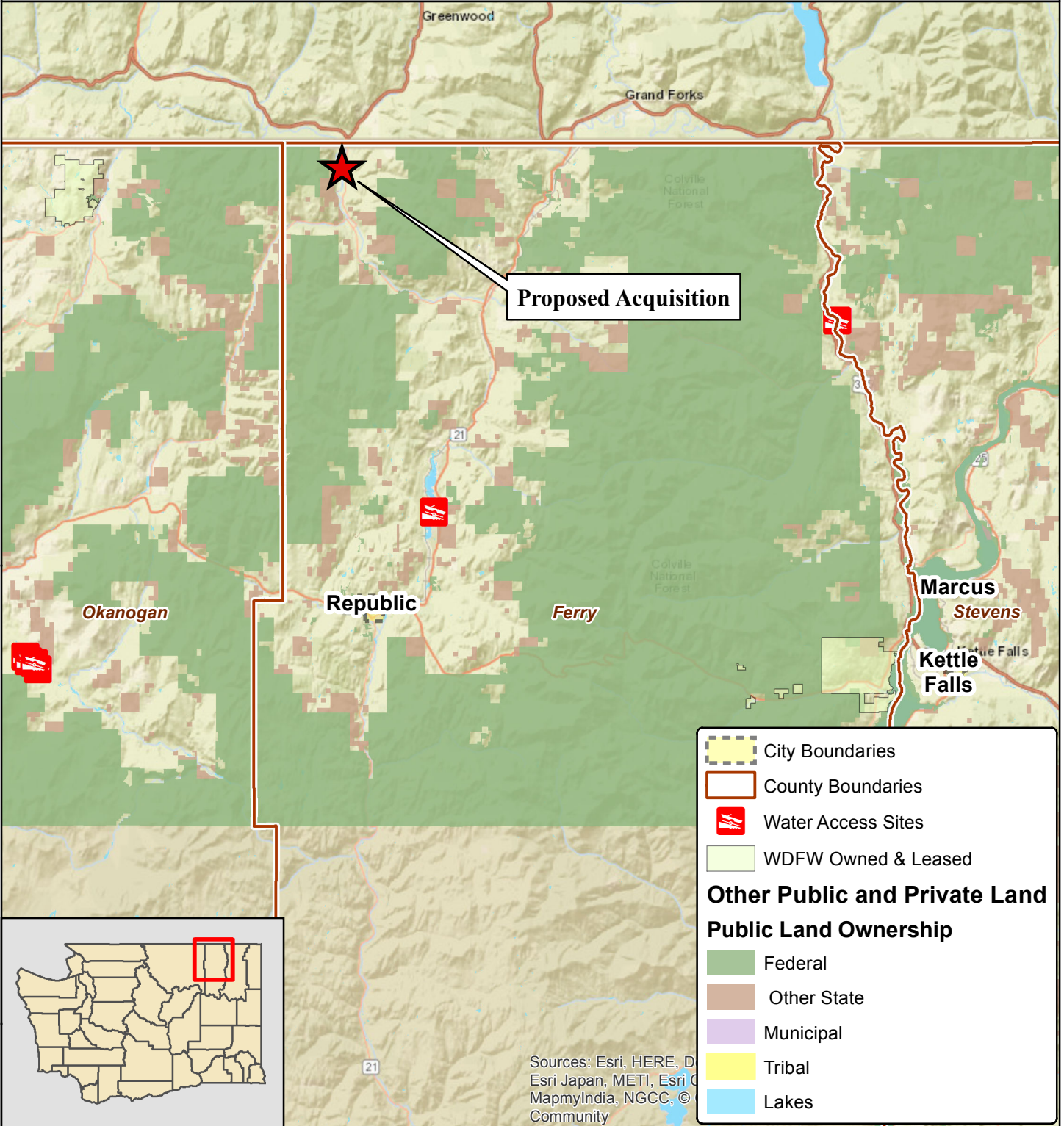


ITEM 2: Proposed Kettle River Access Property

COUNTY: Ferry

LEGAL: Township 40 N, Range 32 E., W.M. Sections 3, 4, 15 & 16

ACRES: 115 (+/-)



Other Public and Private Land Ownership

- City Boundaries
- County Boundaries
- Water Access Sites
- WDFW Owned & Leased
- Federal
- Other State
- Municipal
- Tribal
- Lakes

Sources: Esri, HERE, DeLorme, Esri Japan, METI, Esri China, MapmyIndia, NGCC, © Esri, © Community

ITEM 2: Proposed Kettle River Access Property

COUNTY: Ferry

LEGAL: Township 40 N, Range 32 E., W.M. Sections 3, 4, 15 & 16

ACRES: 115 (+/-) Acres

