

# Fish & Wildlife Planner



Washington  
Department of  
**FISH and  
WILDLIFE**

## Department's Fish and Wildlife Planning Newsletter Provides Information Clearinghouse

*Jeff Azerrad, Wildlife Biologist*

Good stewardship of Washington's diverse fish and wildlife resources is a complex process. It involves good science and a clear line of communication among all stakeholders. In past years, WDFW circulated a newsletter called *Wildlife Planner*, to inform citizens about planning efforts that affected Washington's fish and wildlife habitat. It also was used to distribute technical information to aid in local and regional planning.

This was a great way to exchange information with our conservation planning partners. We have decided to bring this newsletter back and rename it the *Fish and Wildlife Planner*. This newsletter will be used to review and explain WDFW's recent management efforts, addressing activities such as our

Regional Assessment Initiative and our involvement in activities related to the Growth Management Act. It will also identify sources of current scientific information, such as WDFW's Priority Habitat and Species maps and publications. The newsletter will direct readers to those who can best answer certain planning questions, and it will provide information on successful conservation planning efforts occurring at the local and regional level.

We hope you find the *Fish and Wildlife Planner* valuable, and we would greatly appreciate comments and suggestions for future discussion topics. We also would like to hear reactions to subjects discussed in the newsletter. Please send all comments or suggestions to Jeff Azerrad at [azerrjma@dfw.wa.gov](mailto:azerrjma@dfw.wa.gov).

### CONTENTS

Bird Management Recommendation .....	1
PHS Data Update .....	2
Survey of Planners .....	3
Recent Happenings .....	4
Agency Planning Contacts .....	4

## Management Recommendations for Bird Species Published

*Jeff Azerrad, Wildlife Biologist*

In May 2004, WDFW announced the publication of Volume IV of its Priority Habitat and Species (PHS) series. This volume is composed of 33 chapters – each providing useful information to guide the management of specific priority bird species. Also in the PHS series are volumes addressing the management of priority amphibian, reptile, invertebrate, and mammalian species as well as critical riparian and Oregon white oak woodland habitat.



Sage Grouse

Darrell Pruett

< BIRDS cont. from pg. 1 >

This volume provides information on the geographic distribution of priority species as well as the rationale for the inclusion of each species on the PHS list (see <http://wdfw.wa.gov/hab/phslist.htm>).

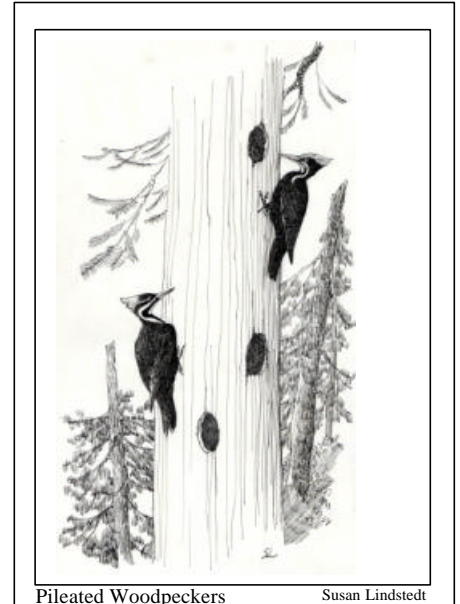
The habitat requirements and factors that limit each species are detailed, and recommendations addressing key management issues are discussed in a way that can assist the needs of planners, landowners, and other decision-makers.

The information contained in this volume is meant to identify ways in which to manage the habitat of priority species using the best available scientific information. Each chapter includes a bibliography

of the scientific literature used for its development, and each has a “key points” section that concisely summarizes the habitat requirements and management recommendations for the species.

This publication is written for both the scientist as well as the planner.

A copy of “Management Recommendations for Washington’s Priority Species: Volume IV – Birds” can be obtained on the Web at <http://wdfw.wa.gov/hab/phs/vol4/birds.htm>. Questions regarding WDFW’s PHS publications can be directed to Jeff Azerrad at (360) 906-6754 or by email at [azerrjma@dfw.wa.gov](mailto:azerrjma@dfw.wa.gov).



Pileated Woodpeckers Susan Lindstedt

## Status of Priority Habitat and Species Data

Terry Johnson, Information Technology Specialist

The Priority Habitat and Species (PHS) database is one of several fish and wildlife databases that are managed by WDFW. The PHS database

illustrates species use areas and habitat types as defined in the PHS list. Other databases managed by WDFW that contain “priority” species data are the Wildlife Heritage, Spotted Owl, Marbled Murrelet, and StreamNet Anadromous and Resident fish databases which is soon to be replaced by the 1:24,000 scale Washington Lakes and Rivers Information System.

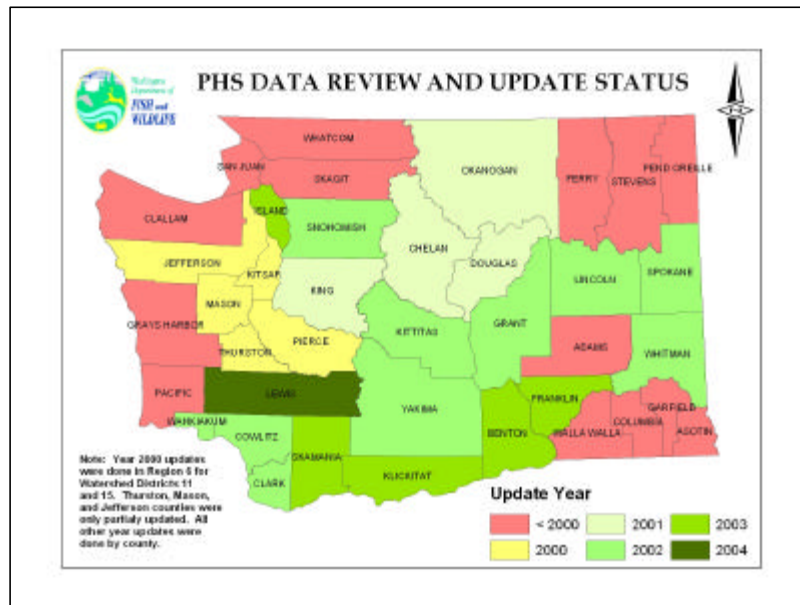
When you make a data request to WDFW, the

maps you receive will display these data and the reports will contain data attribute information. The maps come in nine section, township, and USGS 7.7-minute quadrangle size. When you order digital information, you receive these data as ArcInfo coverages or shape files along with the attribute information as Info or Dbase tables.

WDFW has set a three-year review and update cycle for the PHS database. The map shown below displays the status of the data review and

updates by county. The counties where reviews and updates are planned for December 2004 and January 2005 are Pacific, Grays Harbor, and the western halves of Jefferson and Clallam counties. We are hoping to add Adams, Douglas, and San Juan counties to the list of upcoming updates.

To see how to order PHS data please visit our web site at <http://wdfw.wa.gov/hab/release.htm> or call our data request telephone line at (360) 902-2543.



# Agency Surveys Washington's Planning Community

*Jeff Azerrad, Wildlife Biologist*

During the fall of 2003, WDFW mailed a survey to 1,200 planners from all across the state.

The survey was developed to determine the value planners place on the series of publications, "Management Recommendations for Washington's Priority Habitats and Species." The agency developed PHS as a tool to assist those working on projects that may affect priority fish or wildlife habitat.

Surveys were mailed to planners working for city, county, and regional governments, as well as to private consultants working with local government. The agency developed questions focusing on issues identified to be important to planners in Washington.

Some questions were asked to see how effectively PHS addressed wildlife conservation issues under different planning scenarios (i.e., urban vs. rural planning, small- vs. large-scale projects). WDFW also sought to determine how often PHS is used during various activities such as critical areas planning under the Growth Management Act (GMA). Based on the survey results, WDFW plans to modify this publication series to better address the needs of planners.

## RESULTS

The agency received about 400 completed surveys in October 2003. WDFW determined that many planners are indeed using these publications to answer questions about projects linked to critical areas planning under GMA, State Environmental Policy Act, and the Shorelines Management Act.

The department discovered that planners used PHS more often to assist in long-range planning activities (e.g., developing local regulations under GMA), and less often for individual projects (current planning). Issues of scale may be one reason why some planners are not getting as much use of PHS for project/current planning. Many planners said that PHS tended to be written at scales that are sometimes not applicable to smaller projects. Respondents also revealed that PHS could be improved if the series contained more information applicable to projects within urban and suburban environments. This was not surprising because agency habitat biologists have heard planners express similar concerns.

## PHS "NEXT EVOLUTION"

WDFW already has begun to modify and expand upon PHS to address many of the conclusions of this survey. The agency is beginning to develop

publications that can be more easily applied to smaller projects (e.g., residential subdivisions) and also decided to develop this newsletter to distribute to planning professionals as an information clearinghouse.

Based on the survey participant's responses, the agency decided to begin developing a publication that addresses landscape-scale planning and provides recommendations for development that is of low impact to wildlife. The agency also is considering a publication that specifically addresses conservation and planning issues common to the urban environment. During the process of developing the "next evolution" of PHS, WDFW plans to consult with planners to ensure the agency is creating products that will address their needs.

"Management Recommendations for Washington's Priority Habitats and Species" can be viewed at [wdfw.wa.gov/hab/phsrecs.htm](http://wdfw.wa.gov/hab/phsrecs.htm).

Questions about this survey, the PHS series, or the new PHS resources can be directed to Jeff Azerrad by phone at (360) 906-6754 or by e-mail at [azerrjma@dfw.wa.gov](mailto:azerrjma@dfw.wa.gov).

## Other Recent Happenings

### PHS LIST ADDENDUM

Several months ago, WDFW developed an addendum to the PHS List that was originally written in 1999. The addendum addresses the inclusion or deletion of a number of species from the list. Most changes to the PHS List resulted from species that recently were added to or removed from Washington's Endangered, Threatened, Sensitive, and Candidate Species List. The addendum can be viewed at <http://wdfw.wa.gov/hab/phsinsert.pdf>. The remainder of the PHS list can be viewed at <http://wdfw.wa.gov/hab/phslist.htm>.

## Agency Planning Contacts

### Growth Management Issues

**Eastern Washington** – Jeff Lawlor, 509.456.4082, (Pend Oreille, N. Spokane); Karin Divens, 509.255.6103, (S. Spokane, Lincoln, Whitman); Allen Palmanteer, 509.738.2364, (Ferry, Stevens); Mark Grandstaff, 509.527.4141, (Walla Walla, Columbia); Tom Schirm, 509.382.1266, (Garfield, Asotin)

**North-central Washington** – Vacant  
(Chelan, Okanogan, Douglas, Grant, Adams)

**South-central Washington** – Mark Teske, 509.962.3421,  
(Kittitas, Yakima, Benton, Franklin)

**Southwest Washington** – Carl Dugger, 360.906.6729,  
Wahkiakum, Cowlitz, Lewis, Clark, Skamania, Klickitat)

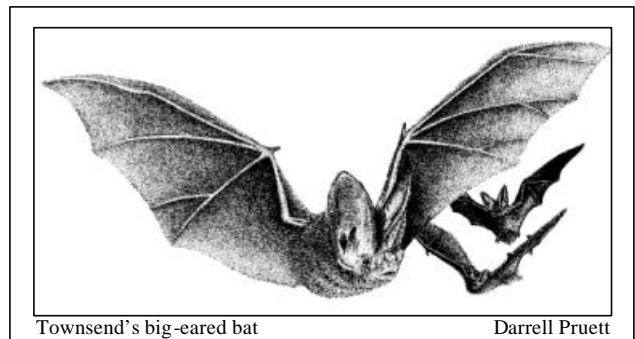
**Puget Sound** – Daniel Penttila, 360.466.4345 x242,  
(Whatcom, Skagit, Snohomish, King, Island, San Juan)

**Olympic Peninsula** – Jeff Davis, 360.895.3965, (Kitsap, Jefferson); Chris Byrnes, 360.895.6123, (Clallam); Gloria Rogers, 360.249.4628, (Mason); Key McMurry, 360.249.4628, (Grays Harbor, Pacific); Debbie Carnevali, 360.264.5148, (Thurston); Travis Nelson, 253.848.5113, (Pierce)

### PHS Mammal Volume

WDFW is currently in the process of writing a publication titled "Management Recommendations for Washington's Priority Species: Volume V, Mammals." Similar to the bird volume that was just published, we will be writing this volume on a species-by-species basis.

As species accounts are completed, they are added to our PHS Web Page. Chapters can currently be viewed at <http://wdfw.wa.gov/hab/phs/vol5/mammalreccs.htm>.



### Abbreviated PHS Publications

The agency is tailoring abbreviated versions of the PHS management recommendations for application to smaller projects (e.g., residential subdivisions). We will be seeking comment from interested planners over the next month. If you would like to review any of the abbreviated recommendations, please email Jeff Azerrad at [azerjma@dfw.wa.gov](mailto:azerjma@dfw.wa.gov).

### Ecoregional Assessment

George Wilhere – 360.902.2369

Erik Neatherlin – 360.902.2559 (Local Assessments)