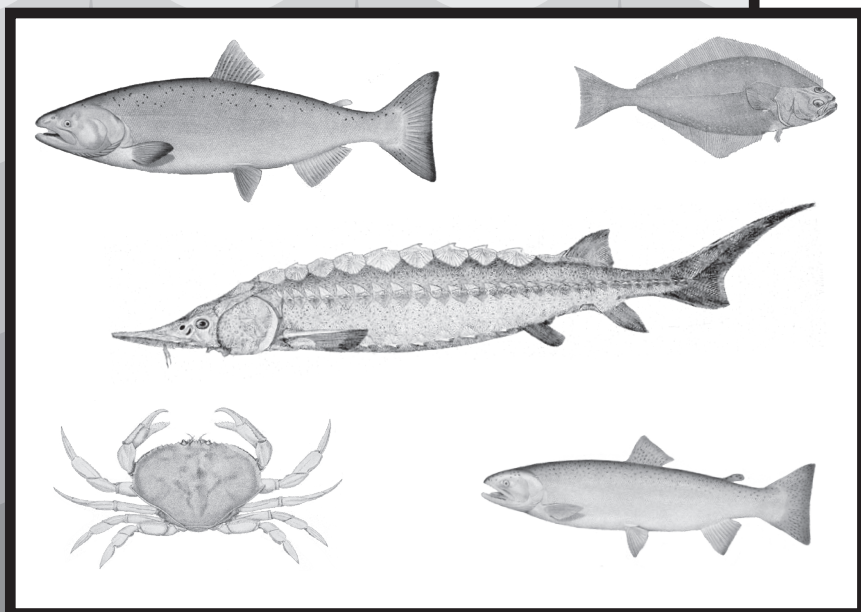


# Washington State Sport Catch Report 2008



by Eric Kraig



Washington Department of  
**FISH AND WILDLIFE**  
Fish Program  
Science Division



# WASHINGTON STATE SPORT CATCH REPORT 2008

by

Eric Kraig

State of Washington  
Christine Gregoire, Governor

Washington State Department of Fish and Wildlife  
Phillip Anderson, Director

Fish Program  
Jim Scott, Assistant Director

Department of Fish and Wildlife  
Fish Science Division  
600 Capitol Way N  
Olympia, Washington 98501



July 2012





## **ACKNOWLEDGEMENTS**

---

Many Department of Fish and Wildlife biologists and program staff contributed to the compilation and editing of this report. Thanks go to the staff in Licensing, Information Systems, Support Services Unit, and Fish Management. Special thanks are due to Lynette Bounds, Kate McClain, Susan Markey, Shelley Peterson, Deb Naylor, Steve Thiesfeld, Tracey Scalici, Sheila Smith, Bob Leland, Bill Gill, Glen Mendel, Joe Hymer, Olaf Langness, and David Bramwell.

# TABLE OF CONTENTS

---

List of Tables .....	iii
Introduction .....	1
Sport Licenses .....	5
Technical Data .....	7
Salmon .....	11
Map of Salmon Catch Record Card Areas .....	12
Description of Salmon Catch Record Card Areas .....	13
Sturgeon .....	47
Map of Sturgeon Catch Record Card Areas .....	48
Description of Sturgeon Catch Record Card Areas .....	49
Steelhead .....	55
Marine Fish .....	75
Shellfish .....	79

# LIST OF TABLES

---

## SPORT LICENSES

Table 1.	Number and Value of Sport Fishing Licenses Sold in Washington in the 2008-2009 Fishing Year.....	6
----------	--	---

## TECHNICAL DATA

Table 2.	Number of Catch Record Cards Issued 1971-2008 .....	9
Table 3.	2008-2009 Catch Record Card Technical Data.....	12

## SALMON

Table 4.	Annual Sport Salmon Catch, 1971 – 2008 .....	14
Table 5.	2008-2009 Total Sport Salmon Catch .....	15
Table 6.	2008-2009 Sport Salmon Marine Catch, Area 1 – Ilwaco: Ocean .....	16
Table 7.	2008-2009 Sport Salmon Marine Catch, Area 1 – Ilwaco: River .....	16
Table 8.	2008-2009 Sport Salmon Marine Catch, Area 2 – Westport.....	17
Table 9.	2008-2009 Sport Salmon Marine Catch, Area 2-1 – Willapa Bay .....	17
Table 10.	2008-2009 Sport Salmon Marine Catch, Area 2-2 – Grays Harbor .....	18
Table 11.	2008-2009 Sport Salmon Marine Catch, Area 3 – LaPush .....	18
Table 12.	2008-2009 Sport Salmon Marine Catch, Area 4 – Neah Bay .....	19
Table 13.	2008-2009 Sport Salmon Marine Catch, Area 5 – Sekiu – Pillar Point .....	19
Table 14.	2008-2009 Sport Salmon Marine Catch, Area 6 – East Juan de Fuca Strait .....	20
Table 15.	2008-2009 Sport Salmon Marine Catch, Area 7 – San Juan Islands .....	20
Table 16.	2008-2009 Sport Salmon Marine Catch, Area 8-1 – Deception Pass / Hope Island .....	21
Table 17.	2008-2009 Sport Salmon Marine Catch, Area 8-2 – Port Susan / Port Gardner .....	21
Table 18.	2008-2009 Sport Salmon Marine Catch, Area 9 – Admiralty Inlet .....	22
Table 19.	2008-2009 Sport Salmon Marine Catch, Area 10 – Seattle / Bremerton .....	22
Table 20.	2008-2009 Sport Salmon Marine Catch, Area 11 – Tacoma / Vashon Island.....	23
Table 21.	2008-2009 Sport Salmon Marine Catch, Area 12 – Hood Canal .....	23
Table 22.	2008-2009 Sport Salmon Marine Catch, Area 13 – South Puget Sound .....	24
Table 23.	2008-2009 Sport Freshwater Catch, By Area and Month .....	25
Table 24.	2008-2009 Washington Sport Salmon Fishing, By Residence .....	44
Table 25.	2008-2009 Frequency Distribution of Salmon Cards and Catch .....	45
Table 26.	2008-2009 Inventory of Salmon Catch Record Cards Received .....	46

# LIST OF TABLES

---

## STURGEON

Table 27.	2008-2009 Sport Sturgeon Catch.....	50
Table 28.	2008-2009 Sport Sturgeon Fishing, By Residence .....	53
Table 29.	2008-2009 Frequency Distribution of Sturgeon Cards and Catch.....	54
Table 30.	2008-2009 Inventory of Sturgeon Catch Record Cards.....	54

## STEELHEAD

Table 31.	2008-2009 Sport Steelhead Catch.....	56
Table 32.	2008-2009 Sport Steelhead Fishing, By Residence .....	71
Table 33.	2008-2009 Frequency Distribution of Steelhead Cards and Catch.....	72
Table 34.	2008-2009 Inventory of Steelhead Catch Record Cards Received .....	73

## MARINE FISH

Table 35.	2008 Coastal Sport Bottomfish Catch .....	76
Table 36.	2008 Washington Recreational Pacific Halibut Catch.....	77
Table 37.	2008 Sport Bottomfish Catch by Boat-Based Anglers in Puget Sound.....	78

## SHELLFISH

Table 38.	2008-2009 Seasonal Summary of Sport Razor Clam Digging on Ocean Beaches .....	80
Table 39.	2008 Clam and Oyster Recreational Use and Harvest Estimates from Intertidal Areas East of Dungeness Spit .....	81
Table 40.	2008 Hood Canal Sport Shrimp Fishery.....	83
Table 41.	2008 Puget Sound Sport Shrimp Fishery .....	83
Table 42.	2008-2009 Sport Dungeness Crab Catch.....	84



# INTRODUCTION

---

The Washington State Sport Catch Report was first published in 1967. The report originally provided salmon catch estimates, which were and still are based on data from catch record cards (punch cards). In 1975, marine fish sport harvest estimates were added to the report, followed by shellfish estimates in 1976. Marine fish and intertidal shellfish sport harvest estimates are based on field and creel surveys. In 1994, with the merger of the departments of Fisheries and Wildlife, steelhead sport harvest estimates were added to the report. Now, catch record card data are collected for salmon, sturgeon, steelhead, Dungeness crab and halibut. The card data is supplemented with field or creel survey data or telephone surveys where available to improve recreational harvest estimate accuracy. The sport harvest estimates for salmon, steelhead, sturgeon, marine fish and shellfish are produced at varying times of each year. For this reason, coupled with an increase in the number of catch record cards issued, budget, and staffing constraints, the 2008 edition of the Washington State Sport Catch Report is being published in July 2012.

The 2008 sport estimates reflect harvest from April 1, 2008, through March 31, 2009. Historically, salmon, sturgeon, halibut, marine fish and shellfish estimates were made on a calendar year basis from January 1 through December 31. Steelhead estimates were summarized from May 1 through the next April 30 to better capture the results of steelhead “run years”. Effective January 1, 1999, the sport license system adopted an April 1 to March 31 license year for all species. To adjust to the new reporting time frames, the 1999 sport report included 15 months of salmon and sturgeon catch and 11 months of steelhead catch (May 1, 1999 – March 31, 2000). When comparing past years’ sport harvest estimate tables, please note the changes in the license structure and reporting year as described above.

## SPORT LICENSES AND CATCH RECORD CARDS

In 2008, the following licenses and catch record cards were required to fish in Washington:

- A saltwater license was required for resident and non resident anglers 16 years of age and over. This license allowed the holder to fish for finfish species in saltwater. This license was available in resident annual, resident senior (ages 70 and over), and non-resident annual. In addition, a free catch record card was required for all anglers of all ages to fish for salmon, steelhead, for halibut in Puget Sound and the Strait of Juan de Fuca, and for sturgeon in the Columbia River, Grays Harbor, Willapa Bay and all tributaries of these three systems.
- A freshwater license was required for resident anglers 16 years of age and over, to fish for finfish species existing in freshwater. This license was available in resident annual, resident senior (ages 70 and over), and non-resident annual. A free catch record card was also required for anglers of all ages to fish for salmon, steelhead and for sturgeon in Columbia River, Grays Harbor, Willapa Bay and all tributaries of these three systems.
- A shellfish/seaweed license was required for resident and non-resident fishers 15 years of age and older. This license allowed the holder to fish for crab, gooseneck barnacles, mussels, octopus, scallops, oysters, razor clams, sea cucumbers, clams, squid and seaweed. A free catch record card was required for crabbers of all ages to fish for Dungeness crab, in Puget Sound.
- A combination license was available for annual and two-day resident fishers and non-resident fishers 15 years of age and older to fish for all legal species in all water of the state.

Catch record cards were significantly changed beginning in 2000. Previously, separate cards were issued for each species group: salmon, sturgeon, steelhead, or halibut. In 2000, these four species groups plus Dungeness crab were combined onto one card record document. A catch record card was issued at no charge to anyone wishing to fish for any of these groups.

In 2001 WDFW implemented the Washington Interactive Licensing Data (WILD) system to electronically capture recreational license issuance information at the point of sale. The catch record card remained the same paper document distributed by sport license vendors, but demographic data about persons receiving the cards became available almost immediately.

Table 1 lists license sales from April 1, 2008, to March 31, 2009, based on a direct count of sales. Tables 2, 3, and 4 list the estimated number of salmon, sturgeon and steelhead catch record cards issued. Note that the number of catch record cards issued shown in these tables are estimated from the catch record card databases, and are not directly comparable to the license sales number. These numbers cannot be compared because anglers under 15 and over 70 are required to obtain a catch record card but not a license. Also, not all dealers returned their catch record card issuance stubs, nor did all anglers return their catch record cards, therefore, correction factors were applied.

## METHODS

---

Sport harvest estimates are made in Washington State using various methods. These include catch record cards for salmon, steelhead, and sturgeon statewide, and for halibut in Puget Sound and the Strait of Juan de Fuca. Estimates from catch record cards are available six months to one year after the end of the season. Creel, telephone interviews and mail surveys are carried out for salmon, sturgeon, steelhead, halibut, and shellfish in areas where management requires more timely estimates. Creel surveys consist of checking anglers who are exiting the fishery and asking specific questions about catch and effort. The creel survey estimates for some species and areas are substituted for catch record card estimates (this is noted in the tables). Dungeness crab estimates are based on creel and phone estimates.

The sport catch record card is used to produce the annual sport harvest estimates for salmon, steelhead, sturgeon, and halibut. Anglers holding in-sample cards are sent reminders to return their CRC's. Harvest summed from returned in-sample cards is expanded to account for the un-sampled cards (75%) and unreturned cards. A bias adjustment factor is applied in some areas and species to account for successful anglers returning cards at a higher rate than unsuccessful anglers. Creel survey data are substituted for CRC data when available. The preliminary sport harvest estimates are sent to WDFW and Tribal biologists statewide for review. After review comments are compiled and investigated, final sport harvest estimates are prepared and distributed.

The methods used produce estimates of sport harvest, which have some level of uncertainty. This uncertainty, or variance, is estimated and expressed with confidence levels, which are not provided in this report. These variance estimates are available upon request.

## OCEAN CATCH DATA

Sport catch data from coastal areas 1 – 4 were reported using “port sampling” (creel survey) catch estimates. Such estimates were derived by monitoring daily landings at four coastal ports: Ilwaco, Westport, La Push, and Neah Bay. Catch is reported in the area where the fish was caught and not the area where it was landed.

## STATISTICAL MONTHS AND STATISTICAL WEEKS

Some catch data (i.e. salmon and bottomfish) are reported using statistical months or statistical weeks. Statistical weeks (defined as Monday-Sunday) are consecutively numbered weeks beginning on January 1 and continuing through week 53 or 54, ending on December 31. The first and last weeks of any year usually contain less than 7 days. Statistical months are made up of a set number of statistical weeks, which approximate calendar months but do not coincide with calendar month start and end dates. For example, in 2008, the statistical month of January begins January 1 and ends February 1 and the statistical month of February starts on February 2 and ends March 24. Due to the differences between calendar and statistical months, some catch may be reported during what appears to be a closed period.

## SALMON

Annual sport salmon catch estimates for 1971 through 2008 are shown in Table 6. Between April 1, 2008, and March 31, 2009 a total of 90,053 salmon were caught in marine areas, and 158,746 salmon were caught in freshwater. The marine totals by species, as shown in Table 7, are: 45,195 chinook; 41,803 coho; 2,710 chum; 4 pink; 25 sockeye; and 316 jacks (all species combined). Freshwater species breakdowns are: 63,324 chinook; 59,361 coho; 14,494 chum; 35 pink; 5,550 sockeye; 17,473 jacks (all species combined).

Catch record cards are used to estimate sport salmon catch in marine and freshwater areas with some exceptions. In marine areas, creel survey estimates were substituted for the catch record card estimates in ocean areas 1-4 (excluding area 2.1 Willapa Bay and area 2.2 Grays Harbor), in Area 5 from July 1 to September 30 and in Area 6 from July 1 to August 1. In freshwater areas, creel survey estimates were substituted for the catch record card estimates in the Lower Columbia River for February–October, and for the Lake Washington sockeye fishery in July. All other estimates are from catch record cards.

## STURGEON

On the new combined sport catch record card, sturgeon fishers were required to record their catch statewide. The total sport harvest for 2008, based on creel surveys and catch record card returns, was 14,328 fish. Of this total, 12,978 white sturgeon came from the Columbia River and Snake River systems combined (Table 30). Catch from coastal rivers (including Willapa Bay and Grays Harbor) totaled 475 white sturgeon. Puget Sound rivers and marine areas produced 501 white sturgeon. For monthly catch information see Table 30.

## **STEELHEAD**

Harvest estimates for sport-caught summer and winter steelhead are based on catch record card returns. Steelhead caught during the months of May through October are considered “summer-runs,” designated SSH. Steelhead caught from November through April are considered “winter-runs,” designated WSH, with the exception of steelhead caught above Bonneville Dam on the Columbia River, where all steelhead are considered “summer-runs,” because of run and spawn timing.

Table 34 presents steelhead sport harvest estimates for the 2008-2009 season geographically by stream and river system. Monthly estimate totals are given for marked and unmarked steelhead.

## **MARINE FISH**

Marine fish are those species of fish which live their entire lives in salt water. There are four general groups of marine fish for management purposes: 1) bottomfish, which are species such as rockfish, lingcod and most species of sole and flounder; 2) forage fish, which are small, schooling fish such as herring and smelt; 3) tunas and mackerels; 4) Pacific halibut.

The recreational catch of bottomfish and halibut in ocean waters (Catch Areas 1-4) is estimated from marine surveys (Table 38 and 39). The estimates are made for each of the four main coastal fishing areas: Ilwaco, Westport, La Push and Neah Bay.

The Puget Sound (Catch Areas 5-13) catch of bottomfish, excluding halibut, is estimated using a combination of two surveys: a creel survey of anglers to determine the catch rate and species composition and a phone survey of licensed anglers to determine total fishing effort. These estimates are shown in Table 40. The recreational catch of forage fish is not routinely monitored and no harvest estimate is available

## **SHELLFISH**

Razor clam harvest on the coastal beaches is summarized in Table 41. During the fall of 2008 and the spring of 2009 248,728 digging trips resulted in a harvest of 3,216,167 clams, for an average of 12.9 clams per trip.

Puget Sound recreational clam and oyster harvest estimates are shown in Table 42. Harvest totals for Manila and native littleneck clams, butter clams, cockles, softshell clams, horse clams, geoducks and oysters are shown for public access beaches. Estimates show 100,111 sport harvester trips gathered 321,178 total pounds of clams and 615,740 oysters in 2007.

The Hood Canal sport shrimp fishery harvest is reported in Table 43. A total of 84,154 pounds of shrimp were caught during the seven days of the season. Puget Sound shrimpers caught 35,718 pounds of shrimp between May and September. The sport crab fishery in the Puget Sound areas is summarized in Table 45. Crabbers harvested an estimated 1,349,424 pounds of Dungeness crab.

# SPORT LICENSES

**Table 1. Number and Value of Sport Fishing Licenses Sold in Washington**

April 1, 2008 - March 31, 2009 - License Year			
Type of License	Price	Number Sold	Value
<b>Saltwater</b>			
Resident	\$18.50	38,617	\$714,414.50
Non-Resident	\$36.50	2,504	\$91,396.00
Senior	\$5.50	13,260	\$72,930.00
<b>Freshwater</b>			
Resident	\$20.00	350,746	\$7,014,920.00
Non-Resident	\$40.00	20,713	\$828,520.00
Senior	\$5.00	33,483	\$167,415.00
<b>Shellfish/Seaweed</b>			
Resident	\$7.00	80,906	\$566,342.00
Non-Resident	\$20.00	5,128	\$102,560.00
Senior	\$5.00	13,266	\$66,330.00
<b>Combination (Saltwater/Freshwater/Shellfish)</b>			
Resident	\$36.50	145,976	\$5,328,124.00
Non-Resident	\$72.50	2,188	\$158,630.00
Disabled	\$5.50	11,099	\$61,044.50
Youth	\$5.50	13,190	\$72,545.00
<b>Short-term Combination (after July 2005)</b>			
1-day Resident	\$6.89	38,314	\$263,983.46
1-day Non-Resident	\$13.29	30,109	\$400,148.61
2-day Resident	\$9.63	12,284	\$118,294.92
2-day Non-Resident	\$18.77	11,071	\$207,802.67
3-day Resident	\$12.37	10,356	\$128,103.72
3-day Non-Resident	\$24.24	8,276	\$200,610.24
4-day Resident	\$14.20	737	\$10,465.40
4-day Non-Resident	\$27.90	2,119	\$59,120.10
5-day Resident	\$16.03	1,211	\$19,412.33
5-day Non-Resident	\$31.55	4,161	\$131,279.55
<b>Razor Clam</b>			
Annual Resident	\$5.50	22,856	\$125,708.00
Annual Non-resident	\$11.00	2,102	\$23,122.00
3-day	\$3.50	38,277	\$133,969.50
<b>PS Crab Endorsement</b>			
Annual	\$2.28	174,715	\$398,350.20
1-5 day	\$0.45	10,598	\$4,769.10
<b>Charter/Guide Stamps</b>			
Charter Stamps	\$6.89	23,239	\$160,116.71
Guide - Resident	\$6.89	2,110	\$14,537.90
Guide - Non-resident	\$13.29	730	\$9,701.70
<b>Duplicate Catch Cards</b>			
Resident		13,123	\$131,230.00
Non-Resident		993	\$9,930.00
Youth		997	\$9,970.00
Senior		560	\$5,600.00
Disabled		301	\$3,010.00
<b>Duplicate Licenses</b>			
Resident		10,782	\$75,975.00
Non-Resident		426	\$2,980.00
Youth		285	\$1,995.00
Senior		702	\$3,898.00
Disabled		197	\$1,379.00
<b>Total</b>			<b>\$17,900,634.11</b>

# TECHNICAL DATA

## Example of 2008 Sportfish Catch Record Card (front and back)



### WASHINGTON DEPARTMENT OF FISH AND WILDLIFE SPORTFISH CATCH RECORD

Immediately upon retaining a salmon, steelhead, sturgeon, halibut (in Puget Sound), or Dungeness crab as authorized by the fishing license purchased, you are required to record your catch by completing (in ink) the record provided below. Failure to do so is a violation of RCW 77.

Refer to area and other codes and fish identification instructions on the separate code and instruction sheet or in the "Fishing in Washington" regulations pamphlet for the current year.

Regulations (WAC 220-56-175) require sport harvesters to return catch record card(s) to WDFW by April 30 of the next license year. Return this card to a WDFW regional office or mail to:

Washington Department of Fish and Wildlife  
Fish Program Catch Record Card Office  
600 Capitol Way N  
Olympia, WA 98501-1091

### STURGEON

	AREA CODE	MON (1-12)	DAY (1-31)	CATCH TYPE	TOTAL LENGTH		AREA CODE	MON (1-12)	DAY (1-31)	CATCH TYPE	TOTAL LENGTH
1						6					
2						7					
3						8					
4						9					
5						10					

### STEELHEAD

	AREA CODE	MON (1-12)	DAY (1-31)	MARK TYPE *		AREA CODE	MON (1-12)	DAY (1-31)	MARK TYPE *
1					16				
2					17				
3					18				
4					19				
5					20				
6					21				
7					22				
8					23				
9					24				
10					25				
11					26				
12					27				
13					28				
14					29				
15					30				

(\* M=Marked U=Unmarked)

### SALMON

	AREA CODE	MON (1-12)	DAY (1-31)	CATCH TYPE		AREA CODE	MON (1-12)	DAY (1-31)	CATCH TYPE
1					14				
2					15				
3					16				
4					17				
5					18				
6					19				
7					20				
8					21				
9					22				
10					23				
11					24				
12					25				
13					26				

### DUNGENESS CRAB

	AREA CODE	MON (1-12)	DAY (1-31)	GEAR TYPE	TOTAL CRAB	CRAB TALLY		AREA CODE	MON (1-12)	DAY (1-31)	GEAR TYPE	TOTAL CRAB	CRAB TALLY
	<b>EXAMPLE</b>							<b>7</b>	<b>9</b>	<b>15</b>	<b>R</b>	<b>5</b>	<b>TH</b>
1							18						
2							19						
3							20						
4							21						
5							22						
6							23						
7							24						
8							25						
9							26						
10							27						
11							28						
12							29						
13							30						
14							31						
15							32						
16							33						
17							34						
18							35						
19							36						

### HALIBUT

Did you fish for Halibut?     Yes     No

	AREA CODE	MON (1-12)	DAY (1-31)	CHART PRIVATE		AREA CODE	MON (1-12)	DAY (1-31)	CHART PRIVATE
1					5				
2					6				
3					7				
4					8				

(C=Charter P=Private)

For Puget Sound marine areas 5-13 only.



**Table 2. Number of Catch Record Cards Issued 1971-2008**

<b>Year</b>	<b>Salmon</b>	<b>Steelhead</b>	<b>Sturgeon</b>
1971	541,600	145,647	
1972	536,750	153,977	
1973	568,825	165,671	
1974	562,375	154,051	
1975	576,075	no data	
1976	660,150	no data	
1977	641,050	no data	
1978	580,375	130,000	
1979	487,875	136,000	
1980	433,700	139,500	
1981	463,561	132,000	
1982	481,915	100,000	
1983	481,025	101,800	
1984	364,286	133,400	
1985	403,523	121,500	
1986	431,898	100,500	
1987	475,459	102,000	
1988	486,356	108,182	33,195
1989	509,534	106,666	35,576
1990	497,215	98,362	32,421
1991	489,394	98,328	32,396
1992	419,986	98,933	37,615
1993	447,986	94,913	43,067
1994	244,629	87,093	54,837
1995	416,707	101,303	62,572
1996	333,773	92,858	69,639
1997	331,511	68,341	76,806
1998	265,296	85,636	79,264
1999-2000	352,003	183,520	132,503
	<b>Combined</b>	<b>Crab - Summer</b>	<b>Crab - Winter</b>
2000-2001*	539,898		
2001-2002	827,443		
2002-2003	767,465		
2003-2004	799,326		
2004-2005	715,395		
2005-2006	686,831		
2006-2007	672,753		
2007-2008**	640,893	210,327	157,712
2008-2009	603,539	210,893	207,143

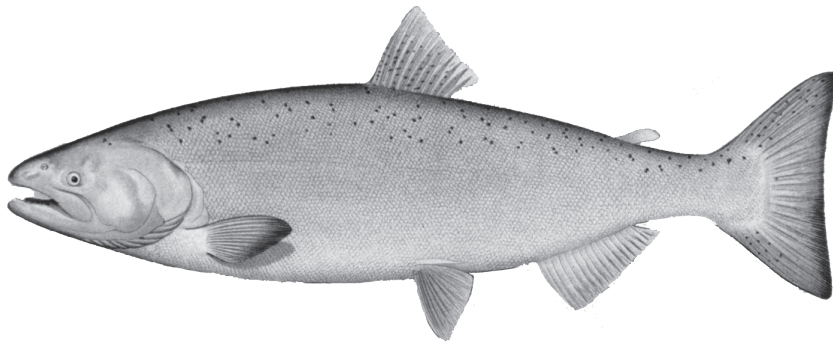
\*Starting with the 2000-2001 season, all species were combined on a single card.

\*\*Starting with the 2007-2008 season, separate cards were issued for Dungeness Crab, for both the summer season and the fall/winter season.

**Table 3. 2008-2009 Catch Record Card Technical Data**

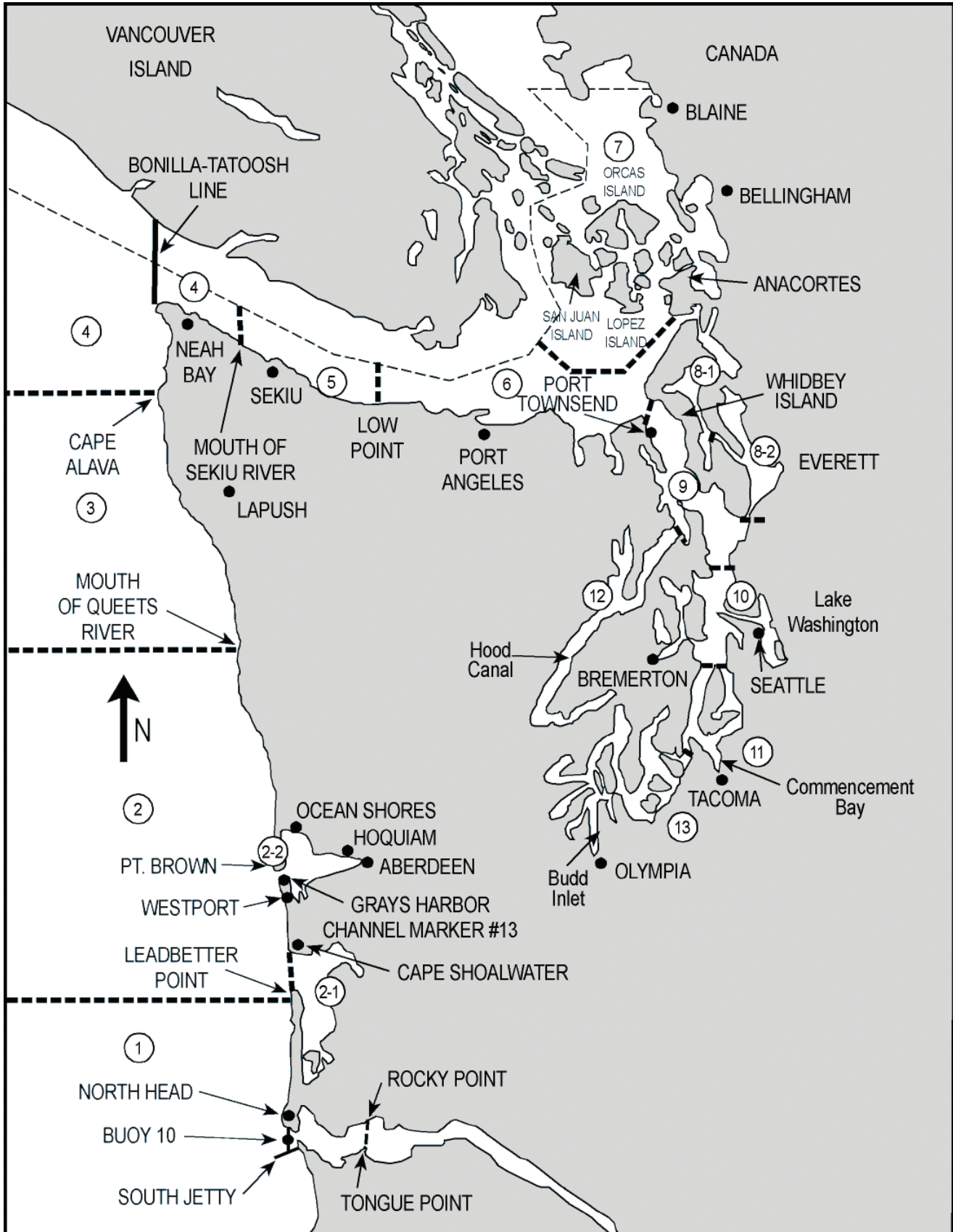
Cards Issued	603,539
In-sample cards	150,885
In-sample cards returned	79,003
Expansion Factor (Cards Issued / In-sample Returns)	7.64
Non-reporting bias correction factors	
Salmon - Marine Area 5	1.00
Salmon - Puget Sound Marine Areas	1.46
Salmon - Freshwater, Grays Harbor, Willapa Bay	1.20
Steelhead	0.98
Sturgeon	1.00

# Salmon



# MAP OF SALMON CATCH RECORD CARD AREAS

## MARINE WATERS ONLY



<b>1</b>	<b>ILWACO</b>	West of the Buoy 10 line at the Columbia River mouth, north to Leadbetter Point.
<b>2</b>	<b>WESTPORT-OCEAN SHORES</b>	From Leadbetter Point north to the Queets River, excluding Willapa Bay and Grays Harbor.
<b>2-1</b>	<b>WILLAPA BAY</b>	East of a line from Leadbetter Point to Cape Shoalwater.
<b>2-2</b>	<b>GRAYS HARBOR</b>	East of a line from the tip of the North Jetty to exposed end of the South Jetty.
<b>3</b>	<b>LA PUSH</b>	From the Queets River north to Cape Alava.
<b>4</b>	<b>NEAH BAY</b>	From Cape Alava north and inside Juan de Fuca Strait to the Sekiu River.
<b>5</b>	<b>SEKIU AND PILLAR POINT</b>	From mouth of the Sekiu River east to Low Point, mouth of the Lyre River.
<b>6</b>	<b>EAST JUAN DE FUCA STRAIT</b>	From Low Point east to the Partridge Point - Point Wilson line north to the line from Trial Island (near Victoria B.C.) - Vessel Traffic Separation Buoy "R" - Smith Island to the Lawson Reef Buoy to Northwest Island to the Initiative 77 marker on Fidalgo Island.
<b>7</b>	<b>SAN JUAN ISLANDS</b>	All marine waters north of the Trial Island line described under Area 6 to the United States-Canada boundary.
<b>8-1</b>	<b>DECEPTION PASS, HOPE</b>	From West Point to Reservation Head eastward through Deception Pass, including all waters of Swinomish Slough and Skagit Bay, and the portion of Saratoga Passage north and west of a line from East Point Light to light on Camano Island (Saratoga Pass Light #4FI Red 4 Sec.).
<b>8-2</b>	<b>PORTS SUSAN AND GARDNER</b>	East of East Point Light-Camano Island Light line (described in 8-1 above) and north of the Possession Point-Shipwreck line (described in 9 below).
<b>9</b>	<b>ADMIRALTY INLET</b>	All waters inside and south of the Partridge Point - Point Wilson line, south and west of a line from Possession Point 110° true to shipwreck, north of the Hood Canal Bridge, and north of the Apple Cove Point-Edwards Point line.
<b>10</b>	<b>SEATTLE-BREMERTON AREA</b>	South from the Apple Cove Point-Edwards Point line to a line projected true east- west through the north tip of Vashon Island.
<b>11</b>	<b>TACOMA-VASHON ISLAND</b>	South from a line projected true east west through the north tip of Vashon Island to the Tacoma Narrows Bridge.
<b>12</b>	<b>HOOD CANAL</b>	All waters south of the Hood Canal Bridge.
<b>13</b>	<b>SOUTH PUGET SOUND</b>	All waters south of Tacoma Narrows Bridge.

---

**FRESHWATER AREAS**

RIVERS OR STREAMS OR LAKES - Name of river, stream or lake, except for Buoy 10

**BUOY 10 (1A)**

From Buoy 10 Line to Rocky Point-Tongue Point Line

Table 4. Annual Sport Salmon Catch.

Year	Total	Fresh-water	Un-known	Area 1	Area 1A	Area 2	Area 2-1	Area 2-2	Area 3	Area 4	Area 5	Area 6	Area 7	Area 8	Area 8-1	Area 8-2	Area 9	Area 10	Area 11	Area 12	Area 13
1971	1,344,818	145,904		342,928		446,738			39,682	87,184	71,947	39,573	28,355	5,189			54,920	35,225	27,332	19,841	
1972	1,138,926	121,432		307,938		353,113			31,278	61,704	45,446	45,058	29,536	3,097			42,968	32,942	35,962	28,452	
1973	1,095,360	147,554		236,385		348,406			49,900	48,645	33,347	40,308	14,852	3,966			52,935	42,574	61,919	14,569	
1974	1,320,420	88,048		334,664		320,467			74,832	80,362	50,319	53,222	36,318	5,491			76,518	69,341	105,110	25,728	
1975	1,399,375	101,531		308,475		331,565			57,356	59,451	48,975	74,336	37,626	7,726			100,089	78,832	162,072	31,341	
1976	1,749,560	100,601		433,026		543,295			70,133	68,670	63,966	102,639	55,396	21,688			88,737	62,607	61,562	24,405	52,835
1977	1,191,414	96,843		248,518		321,888			38,359	86,186	73,106	61,568	31,709	17,792			64,651	39,372	44,657	22,020	44,745
1978	1,107,852	86,845		220,548		269,338			24,439	52,270	59,400	68,849	36,293	13,229			73,187	56,479	48,018	26,801	72,156
1979	1,123,809	88,659		167,478		174,365			24,160	53,840	134,354	70,839	48,101	33,835			104,619	71,167	71,495	20,006	60,891
1980	852,879	105,461		158,883		163,748			19,146	29,500	39,587	52,663	24,457	18,432			60,072	52,128	57,751	17,138	53,913
1981	760,104	58,128		142,879		151,301			1,734	36,883	55,900	56,318	21,826	16,986			67,838	42,602	42,175	14,989	50,545
1982	749,995	91,849		102,769	13,069	158,005			9,857	42,716	67,611	33,870	12,947	9,940			49,853	49,727	51,975	8,672	47,135
1983	860,623	108,783		95,593	3,006	100,791			7,318	58,469	62,486	74,311	29,844	23,268			98,485	54,228	72,772	11,756	59,513
1984	561,428	142,170		23,927	55,865	16,631			167	6,604	39,276	67,246	29,985	17,442			79,526	24,130	28,781	5,158	24,520
1985	686,333	107,734		75,013	18,914	93,620			2,062	26,878	101,920	45,342	23,798	25,427			75,193	33,019	38,157	4,897	14,359
1986	830,644	115,469		69,915	86,360	98,421			2,553	25,027	138,951	71,544	27,550	26,822			79,730	33,686	33,891	3,460	17,265
1987	782,834	110,636		62,393	61,048	71,458			3,005	29,418	107,138	82,377	27,152	31,421			86,270	42,179	32,753	8,947	26,639
1988	703,088	168,594		22,960	120,019	62,001			3,341	19,576	107,935	47,483	22,225	16,514			47,109	28,020	22,202	2,420	12,689
1989	832,214	121,417		87,755	67,734	100,000			2,405	44,600	164,580	64,766	19,078	23,165			63,724	36,748	24,561	4,588	7,093
1990	824,143	107,934		97,844	16,850	102,984			5,809	48,329	223,012	54,848	12,797	14,865			57,875	47,519	25,555	1,618	6,304
1991	943,473	153,719		77,608	152,974	107,362	1,965	9,047	5,615	43,357	216,816	42,812	16,602		3,528	16,809	40,390	32,229	15,549	3,225	3,866
1992	569,195	90,032		48,356	37,157	67,427	1,978	0	2,031	25,820	108,876	30,894	12,515		3,295	11,836	47,157	51,338	18,198	6,303	5,982
1993	599,361	145,579		49,587	17,975	57,990	2,260	743	3,469	31,154	80,496	44,174	35,697		6,150	18,170	41,949	36,699	14,130	3,540	9,599
1994	156,896	61,142			1,069	71	2,574	1,971	Closed	Closed	518	1,184	8,322		1,917	3,301	6,978	23,279	25,360	8,905	10,305
1995	524,232	190,158		3,743	24,954	29,122	936	1,799	1,990	15,604	53,553	20,617	23,801		23,503	42,900	22,920	28,560	28,242	5,200	6,630
1996	390,660	161,108		17,882	3,509	23,089	2,422	2,601	1,901	8,750	41,820	18,103	15,486		2,350	13,968	20,343	18,972	25,417	6,408	6,531
1997	394,868	98,220		11,976	22,441	16,261	409	1,433	1,260	2,577	52,890	23,614	35,016		5,894	37,649	24,356	25,277	23,146	7,089	5,360
1998	235,466	78,664		4,738	5,364	9,348	1,329	2,970	762	8,045	24,509	6,657	5,801		2,095	12,409	24,324	16,674	17,272	7,782	6,723
1999	239,317	92,611		21,989	11,222	19,056	2,137	1,207	4,387	6,650	24,546	3,509	5,765		1,519	8,805	9,228	4,009	14,517	4,046	4,114
2000	401,180	191,805	4,228	27,889	16,335	34,636	870	2,736	2,519	11,652	29,883	4,334	7,178		2,105	12,798	12,608	15,681	14,212	4,580	5,131
2001	1,056,395	405,590	11,042	82,641	80,701	85,645	1,255	5,784	4,188	21,991	87,639	12,081	17,268		17,685	74,947	70,259	26,448	27,761	17,677	5,793
2002	551,479	306,424	6,443	53,015		61,715	960	3,530	3,736	13,523	35,100	1,418	8,326		1,544	8,609	12,731	11,885	12,044	7,039	3,437
2003	810,616	342,884	6,940	83,164		64,733	1,953	2,135	6,537	32,207	88,885	13,781	12,409		10,573	51,784	44,697	16,541	17,719	10,898	2,776
2004	474,929	214,116	2,562	59,321		38,616	1,759	6,017	5,152	34,760	45,000	2,511	3,428		1,117	7,606	15,024	13,766	13,944	7,293	2,937
2005	451,411	200,535	1,789	38,490		32,823	3,580	1,910	4,316	15,297	58,621	3,295	5,934		1,691	18,846	24,125	12,866	15,022	8,392	3,879
2006	288,716	174,224	1,212	21,254		14,506	3,368	1,812	3,754	7,136	13,244	1,601	4,486		378	2,280	6,398	11,193	12,024	6,214	3,632
2007	545,737	231,800	2,501	49,108		28,694	1,473	1,635	3,545	16,057	75,084	6,626	9,961		1,513	21,604	41,906	20,149	22,602	6,955	4,524
2008	251,975	160,431	1,491	11,729		16,983	2,788	1,001	1,356	3,415	14,765	1,437	3,651		580	1,303	6,982	8,007	9,598	3,124	3,334

**Note:** In 1976, several area boundary lines were changed resulting in thirteen catch areas instead of twelve. The changes were mostly reflected in catch Areas 8, 9, 10 and new Area 13. In 1989, catch Area 8 was subdivided into Areas 8.1 and 8.2 and catch Area 2 was subdivided into Areas 2, 2-1 and 2-2. For comparative purposes, the catch for Areas 8-1 and 8-2 are totaled and entered under Area 8 until 1990. Beginning in 1991, Areas 8-1 and 8-2, are reported separately. Similarly, the catch in Areas 2, 2-1 and 2-2 are included in the total catch for Area 2 until 1990. Beginning in 1991, they are reported separately. The total catch for Area 1 and Area 1A is included in the total catch for Area 1 until 1981. Starting in 1982, they are reported separately. Beginning in 2002, Area 1A catch is included in the freshwater total.

**Note:** Prior to 1999, sport salmon estimates were based on calendar years. In 1999, the sport estimates cover January 1, 1999 - March 31, 2000. Starting in 2000, sport salmon estimates are based on the fishing license year which runs from April 1 to March 31.

Table 5. Total 2008-2009 Sport Salmon Catch.

Marine Area	Chinook	Coho	Chum	Pink	Sockeye	Jacks	Total Salmon	Marine Angler Trips	Salmon per Trip
Ilwaco-Ocean (Area 1)	3,000	8,730					11,729	10,613	1.11
Westport (Area 2)	9,543	7,440					16,983	18,551	0.92
Willapa Bay (Area 2.1)	1,981	593				214	2,788	N/A	
Grays Harbor (Area 2.2)	2	897				102	1,001	N/A	
LaPush (Area 3)	779	577					1,356	2,152	0.63
Neah Bay (Area 4)	1,313	2,101					3,415	6,233	0.55
<b>Subtotal Coast*</b>	<b>16,618</b>	<b>20,338</b>	<b>0</b>	<b>0</b>		<b>316</b>	<b>37,272</b>	<b>37,549</b>	<b>0.89</b>
Seki-Pillar Point (Area 5)	3,338	11,216	200	4	7		14,765	49,191	0.30
East Juan de Fuca (Area 6)	1,217	220					1,437	8,093	0.18
San Juan Islands (Area 7)	3,403	226	9		13		3,651	31,593	0.12
Deception Pass, Hope Island (Area 8-1)	402	173			5		580	12,696	0.05
Port Susan & Port Gardner (Area 8-2)	654	639	10				1,303	29,168	0.04
Admiralty Inlet (Area 9)	5,088	1,808	86				6,982	56,385	0.12
Seattle-Bremerton (Area 10)	3,662	4,251	94				8,007	48,458	0.17
Tacoma-Vashon Island (Area 11)	7,945	1,624	29				9,598	69,861	0.14
Hood Canal (Area 12)	1,375	588	1,161				3,124	20,666	0.15
South Puget Sound (Area 13)	1,493	720	1,121				3,334	29,287	0.11
<b>Subtotal Puget Sound</b>	<b>28,577</b>	<b>21,465</b>	<b>2,710</b>	<b>4</b>	<b>25</b>		<b>52,781</b>	<b>355,398</b>	<b>0.15</b>
Marine Area Totals*	45,195	41,803	2,710	4	25	316	90,053	392,947	<b>0.23</b>
Freshwater Totals	63,392	59,420	14,520	36	5,564	17,499	160,431	N/A	
<b>Grand Totals</b>	<b>108,587</b>	<b>101,223</b>	<b>17,230</b>	<b>40</b>	<b>5,589</b>	<b>17,815</b>	<b>250,484</b>	<b>N/A</b>	

\*Salmon per trip is calculated after subtracting the catch totals for Willapa Bay and Grays Harbor, where angler trip data is not available.

**Table 6. 2008-2009 Sport Salmon Catch, Area 1 - Ilwaco: Ocean**

Week Ending	Year	Chinook	Coho	Pink	Sockeye	Chum	Total Salmon	Marine Angler Trips	Salmon per Trip
June 1	2008	12					12	60	0.19
June 8	2008	7					7	19	0.39
June 15	2008	39					39	44	0.90
June 22	2008	79					79	155	0.51
June 29	2008	337	330				667	500	
July 6	2008	488	854				1,342	1,415	0.95
July 13	2008	150	603				754	650	1.16
July 20	2008	326	674				1,000	1,007	0.99
July 27	2008	202	1,205				1,407	1,386	1.01
August 3	2008	496	1,383				1,879	1,418	1.32
August 10	2008	483	1,320				1,802	1,555	1.16
August 17	2008	381	2,360				2,741	2,405	1.14
<b>Total</b>		<b>3,000</b>	<b>8,730</b>				<b>11,729</b>	<b>10,613</b>	<b>1.11</b>

**NOTE:** Catch by species is presented by actual catch area and therefore may not correspond with catch by quota area statistics reported prior to 1995.

**Table 7. 2008 - 2009 Sport Salmon Catch, Area 1 - Ilwaco: River (Buoy 10)**

Week Ending	Year	Chinook	Coho	Pink	Sockeye	Chum	Total Salmon	Angler Trips	Salmon per Trip
August 3	2008	1					1	297	0.00
August 10	2008	12					12	388	0.03
August 17	2008	818	229				1,047	2,275	0.46
August 24	2008	1,855	1,298				3,153	6,568	0.48
August 31	2008	10	2,490				2,500	3,711	0.67
September 7	2008	2					2	10	0.20
<b>Total **</b>		<b>2,698</b>	<b>4,017</b>				<b>6,715</b>	<b>13,249</b>	<b>0.51</b>

**NOTE:** Catch by species is presented by actual catch area and therefore may not correspond with catch by quota area statistics reported prior to 1995.

\*\* Includes some catch just above the Megler-Astoria Bridge.



**Table 8. 2008-2009 Sport Salmon Catch, Area 2 - Westport**

Week Ending	Year	Chinook	Coho	Pink	Sockeye	Chum	Total Salmon	Marine Angler Trips	Salmon per Trip
June 1	2008	31					31	350	0.09
June 8	2008	137					137	364	0.38
June 15	2008	168					168	296	0.57
June 22	2008	268	2				270	583	0.46
June 29	2008	1,536	29				1,565	1,061	1.48
July 6	2008	1,817	450				2,267	2,546	0.89
July 13	2008	774	775				1,549	1,685	0.92
July 20	2008	1,105	912				2,017	2,209	0.91
July 27	2008	767	416				1,183	1,941	0.61
August 3	2008	643	584				1,227	1,417	0.87
August 10	2008	1,073	1,014				2,087	1,610	1.30
August 17	2008	744	719				1,463	1,589	0.92
August 24	2008	31	124				155	148	1.05
August 31	2008	144	854				998	943	1.06
September 7	2008	195	811				1,006	1,083	0.93
September 14	2008	110	750				860	727	1.18
<b>Total</b>		<b>9,543</b>	<b>7,440</b>				<b>16,983</b>	<b>18,551</b>	<b>0.92</b>

NOTE: Catch by species is presented by actual catch area and therefore may not correspond with catch by quota area statistics reported prior to 1995.

**Table 9. 2008-2009 Sport Salmon Catch, Area 2.1 - Willapa Bay**

Statistical Month	Year	Chinook	Coho	Pink	Sockeye	Chum	Chinook Jacks	Coho Jacks	Total Salmon
July	2008	17	23				6		46
August	2008	969	143				124	6	1,242
September	2008	982	381				39	32	1,434
October	2008	13	46				7		66
<b>Total</b>		<b>1,981</b>	<b>593</b>				<b>176</b>	<b>38</b>	<b>2,788</b>

**Table 10. 2008-2009 Sport Salmon Catch, Area 2.2 - Grays Harbor**

Statistical Month	Year	Chinook	Coho	Pink	Sockeye	Chum	Chinook Jacks	Coho Jacks	Total Salmon
August	2008		6				1		7
September	2008	2	456					53	511
October	2008		416					47	463
November	2008		20						20
<b>Total</b>		<b>2</b>	<b>898</b>				<b>1</b>	<b>100</b>	<b>1,001</b>

**Table 11. 2008-2009 Sport Salmon Catch, Area 3 - La Push**

Week Ending	Year	Chinook	Coho	Pink	Sockeye	Chum	Total Salmon	Marine Angler Trips	Salmon per Trip
June 15	2008	8					8	58	0.13
June 22	2008	32					32	170	0.19
June 29	2008	43					43	67	0.64
July 6	2008	101	12				113	163	0.69
July 13	2008	57	28				85	104	0.82
July 20	2008	86	48				134	165	0.81
July 27	2008	27	43				70	159	0.44
August 3	2008	26	30				56	95	0.59
August 10	2008	169	111				280	278	1.01
August 17	2008	72	62				134	165	0.81
August 24	2008	32	52				84	101	0.83
August 31	2008	13	24				37	81	0.46
September 7	2008	19	52				71	107	0.66
September 14	2008	3	29				31	43	0.73
September 21	2008	19	52				71	77	0.93
September 28	2008	66	32				98	281	0.35
October 5	2008	6	1				8	38	0.20
<b>Total</b>		<b>779</b>	<b>577</b>				<b>1,356</b>	<b>2,152</b>	<b>0.63</b>

NOTE: Catch by species is presented by actual catch area and therefore may not correspond with catch by quota area statistics reported prior to 1995.

**Table 12. 2008-2009 Sport Salmon Catch, Area 4 - Neah Bay**

Week Ending	Year	Chinook	Coho	Pink	Sockeye	Chum	Total Salmon	Marine Angler Trips	Salmon per Trip
June 8	2008	18					18	182	0.10
June 15	2008	40					40	156	0.25
June 22	2008	154					154	375	0.41
June 29	2008	97					97	337	0.29
July 6	2008	153	66				219	311	0.71
July 13	2008	102	72				174	232	0.75
July 20	2008	266	166				431	791	0.55
July 27	2008	175	347				522	1,086	0.48
August 3	2008	60	62				122	297	0.41
August 10	2008	107	370				478	474	1.01
August 17	2008	102	495				597	585	1.02
August 24	2008	26	411				437	669	0.65
August 31	2008	9	94				103	505	0.20
September 7	2008	3	15				18	162	0.11
September 14	2008		4				4	70	0.06
<b>Total</b>		<b>1,313</b>	<b>2,102</b>				<b>3,415</b>	<b>6,233</b>	<b>0.55</b>

**NOTE:** Catch by species is presented by actual catch area and therefore may not correspond with catch by quota area statistics reported prior to 1995.

**Table 13. 2008-2009 Sport Salmon Catch, Area 5 - Sekiu - Pillar Point**

Statistical Month	Year	Chinook	Coho	Pink	Sockeye	Chum	Total Salmon	Marine Angler Trips	Salmon per Trip
April	2008	40					40	94	0.43
June	2008	8					8	23	0.35
July	2008	2,446	4	4	3	21	2,478	11,551	0.21
August	2008	452	4,467		4		4,923	9,959	0.49
September	2008	196	6,192			131	6,519	22,863	0.29
October	2008	53	553			48	654	4,358	0.15
November	2008	71					71	176	0.40
February	2009	48					48	112	0.43
March	2009	24					24	55	0.44
<b>Total</b>		<b>3,338</b>	<b>11,216</b>	<b>4</b>	<b>7</b>	<b>200</b>	<b>14,765</b>	<b>49,191</b>	<b>0.30</b>

**NOTE:** Estimates for July-October are from creel surveys; all other estimates are from catch record cards.

**Table 14. 2008-2009 Sport Salmon Catch, Area 6 - East Juan de Fuca Strait**

Statistical Month	Year	Chinook	Coho	Pink	Sockeye	Chum	Total Salmon	Marine Angler Trips	Salmon per Trip
April	2008	27					27	719	0.04
July	2008	494					494	2,086	0.24
August	2008	43	108				151	1,793	0.08
September	2008	4	99				103	943	0.11
October	2008	204	8				212	586	0.36
November	2008		5				5	15	0.33
February	2009	223					223	906	0.25
March	2009	222					222	1,045	0.21
<b>Total</b>		<b>1,217</b>	<b>220</b>				<b>1,437</b>	<b>8,093</b>	<b>0.18</b>

**Table 15. 2008-2009 Sport Salmon Catch, Area 7 - San Juan Islands**

Statistical Month	Year	Chinook	Coho	Pink	Sockeye	Chum	Total Salmon	Marine Angler Trips	Salmon per Trip
April	2008	212					212	4,503	0.05
July	2008	935	111		7		1,053	7,439	0.14
August	2008	493	45		6		544	6,803	0.08
September	2008	383	57				440	5,203	0.08
October	2008	271	13			9	293	1,507	0.19
November	2008	5					5	28	0.18
December	2008	5					5	28	0.18
January	2009	5					5	27	0.19
February	2009	873					873	3,936	0.22
March	2009	221					221	2,119	0.10
<b>Total</b>		<b>3,403</b>	<b>226</b>		<b>13</b>	<b>9</b>	<b>3,651</b>	<b>31,593</b>	<b>0.12</b>

NOTE: Estimates for February-March are from creel surveys; all other estimates are from catch record cards.

**Table 16. 2008-2009 Sport Salmon Catch, Area 8-1 - Deception Pass / Hope Island**

Statistical Month	Year	Chinook	Coho	Pink	Sockeye	Chum	Total Salmon	Marine Angler Trips	Salmon per Trip
April	2008	20					20	299	0.07
July	2008		27				27	1,137	0.02
August	2008		54				54	2,853	0.02
September	2008		65				65	4,882	0.01
October	2008		27				27	354	0.08
November	2008				5		5	1,044	0.00
January	2008	344					344	1,263	0.27
February	2009	27					27	608	0.04
March	2009	11					11	256	0.04
<b>Total</b>		<b>402</b>	<b>173</b>		<b>5</b>		<b>580</b>	<b>12,696</b>	<b>0.05</b>

NOTE: Estimates for April, January-March are from creel surveys; all other estimates are from catch record cards.

**Table 17. 2008-2009 Sport Salmon Catch, Area 8-2 - Port Susan / Port Gardner**

Statistical Month	Year	Chinook	Coho	Pink	Sockeye	Chum	Total Salmon	Marine Angler Trips	Salmon per Trip
April	2008	73					73	1,024	0.07
June	2008	22					22	935	0.02
July	2008	68				8	76	7,938	0.01
August	2008	12	167				179	4,383	0.04
September	2008	11	461				472	9,788	0.05
October	2008	3	11			2	16	634	0.03
January	2009	222					222	1,215	0.18
February	2009	141					141	2,193	0.06
March	2009	102					102	1,058	0.10
<b>Total</b>		<b>654</b>	<b>639</b>			<b>10</b>	<b>1,303</b>	<b>29,168</b>	<b>0.04</b>

NOTE: Estimates for April, January-March are from creel surveys; all other estimates are from catch record cards.

**Table 18. 2008-2009 Sport Salmon Catch, Area 9 - Admiralty Inlet**

Statistical Month	Year	Chinook	Coho	Pink	Sockeye	Chum	Total Salmon	Marine Angler Trips	Salmon per Trip
April	2008	149					149	1,068	0.14
June	2008	11					11	96	0.11
July	2008	3,432	342			3	3,777	14,552	0.26
August	2008	562	496				1,058	15,016	0.07
September	2008	45	863			59	967	16,380	0.06
October	2008	24	96			16	136	2,728	0.05
November	2008	335	2			8	345	2,745	0.13
December	2008	6	5				11	77	0.14
January	2009	161	4				165	2,329	0.07
February	2009	324					324	634	0.51
March	2009	39					39	1,103	0.04
<b>Total</b>		<b>5,088</b>	<b>1,808</b>			<b>86</b>	<b>6,982</b>	<b>56,385</b>	<b>0.12</b>

NOTE: Estimates for part of July-August, November, January-February are from creel surveys; all other estimates are from catch record cards.

**Table 19. 2008-2009 Sport Salmon Catch, Area 10 - Seattle / Bremerton**

Statistical Month	Year	Chinook	Coho	Pink	Sockeye	Chum	Total Salmon	Marine Angler Trips	Salmon per Trip
June	2008	11					11	69	0.16
July	2008	1,407	779			4	2,190	16,594	0.13
August	2008	1,241	1,011				2,252	12,824	0.18
September	2008	49	2,227			16	2,292	9,114	0.25
October	2008	320	166			57	543	5,599	0.10
November	2008	383	58			10	451	2,229	0.20
December	2008	101	5			7	113	1,001	0.11
January	2009	150	5				155	1,028	0.15
<b>Total</b>		<b>3,662</b>	<b>4,251</b>			<b>94</b>	<b>8,007</b>	<b>48,458</b>	<b>0.17</b>

NOTE: Estimates for parts of July-August, December-January are from creel surveys; all other estimates are from catch record cards.

**Table 20. 2008-2009 Sport Salmon Catch, Area 11 -Tacoma / Vashon Island**

Statistical Month	Year	Chinook	Coho	Pink	Sockeye	Chum	Total Salmon	Marine Angler Trips	Salmon per Trip
April	2008	43					43	302	0.14
June	2008	1,110	16				1,126	8,622	0.13
July	2008	2,699	459			3	3,161	23,363	0.14
August	2008	3,446	589				4,035	25,889	0.16
September	2008	141	539			5	685	7,577	0.09
October	2008	334	21			14	369	2,018	0.18
November	2008	58				7	65	703	0.09
December	2008	16					16	134	0.12
February	2009	71					71	1,018	0.07
March	2009	27					27	235	0.11
<b>Total</b>		<b>7,945</b>	<b>1,624</b>			<b>29</b>	<b>9,598</b>	<b>69,861</b>	<b>0.14</b>

NOTE: Estimates for June-September are from creel surveys; all other estimates are from catch record cards.

**Table 21. 2008-2009 Sport Salmon Catch, Area 12 - Hood Canal**

Statistical Month	Year	Chinook	Coho	Pink	Sockeye	Chum	Total Salmon	Marine Angler Trips	Salmon per Trip
April	2007	22					22	44	0.50
July	2008	108	6				114	2,029	0.06
August	2008	471	83				554	3,353	0.17
September	2008	132	308				440	4,223	0.10
October	2008		182			416	598	7,537	0.08
November	2008		4			745	749	451	1.66
December	2008	22					22	109	0.20
January	2009		5				5	16	0.31
February	2009	310					310	911	0.34
March	2009	310					310	1,993	0.16
<b>Total</b>		<b>1,375</b>	<b>588</b>			<b>1,161</b>	<b>3,124</b>	<b>20,666</b>	<b>0.15</b>

Table 22. 2008-2009 Sport Salmon Catch, Area 13 - South Puget Sound

Statistical Month	Year	Chinook	Coho	Pink	Sockeye	Chum	Total Salmon	Marine Angler Trips	Salmon per Trip
April	2008	119					119	711	0.17
May	2008	152					152	1,272	0.12
June	2008	163					163	1,739	0.09
July	2008	218	81				299	6,947	0.04
August	2008	743	45				788	7,561	0.10
September	2008	46	410				456	4,796	0.10
October	2008		110			232	342	2,524	0.14
November	2008					771	771	2,156	0.36
December	2008		18			118	136	376	0.36
January	2009		49				49	515	0.10
March	2009	52	7				59	690	0.09
<b>Total</b>		<b>1,493</b>	<b>720</b>			<b>1,121</b>	<b>3,334</b>	<b>29,287</b>	<b>0.11</b>



**Table 23. 2008-2009 Freshwater Salmon Sport Catch by Area and Month**

COASTAL RIVER SYSTEMS																	
System	Stream	CRC Code	Species	2008									2009			Total	
				Apr	May	Jun	Jul	Aug	Sep	Oct	Nov	Dec	Jan	Feb	Mar		
Grays Harbor	Hoquiam River	355	Coho							6						6	
			Total							6						6	
	Humptulips River	358	Chinook							1							1
			Coho							664	79	43	6				792
			Jackchin							85							85
			Jackcoho							152	24	6					182
		Total							902	103	49	6				1,060	
	Johns River	367	Coho							6							6
			Total							6							6
	Wishkah River	335	Coho							140	6						146
Jackcoho									18							18	
Total									158	6						164	
Chehalis R. System	Chehalis River	315	Coho						65	586	85	72				808	
			Jackchin						52	46						98	
			Jackcoho						117	403	13					533	
			Total						234	1,035	98	72				1,439	
	Quigg Lake	370	Coho							7						7	
			Total							7						7	
	Satsop River	329	Coho							449	72	26	7			554	
			Jackchin							13						13	
			Jackcoho							143	7					150	
			Total							605	79	26	7			717	
	Skookumchuck River	333	Coho						7	33	33					73	
			Jackcoho							7	13					20	
			Total						7	40	46					93	
	Wynoochee River	337	Jackchin							7						7	
			Jackcoho							26						26	
Total									33						33		

Table 23. 2008-2009 Freshwater Salmon Sport Catch by Area and Month (continued)

COASTAL RIVER SYSTEMS																
System	Stream	CRC Code	Species	2008									2009			Total
				Apr	May	Jun	Jul	Aug	Sep	Oct	Nov	Dec	Jan	Feb	Mar	
Copalis R. System	Copalis River	339	Coho						8	46	23					77
			Jackcoho						15	31	15					61
			Total						23	77	38					138
Goodman Cr. System	Goodman Creek	345	Jackcoho								8					8
			Total								8					8
Hoh R. System	Hoh River	348	Chinook			7			65	209	7					288
			Coho						13	176	13					202
			Jackchin			7					7					14
			Total			14			78	392	20					504
Ozette R. System	Ozette River	388	Coho								8					8
			Total								8					8
Queets R. System	Clearwater River	392	Coho							65	26					91
			Total							65	26					91
	Queets River	394	Coho						58	226	6					290
			Jackchin							6						6
			Jackcoho							452	39					491
	Total						510	271	6					787		
	Salmon River (Jefferson Co)	396	Coho						84	97						181
Jackcoho									13						13	
Total							84	110						194		
Quillayute R. System	Bogachiel River	398	Chinook							33	13					46
			Coho					33	7	20	26					86
			Jackcoho								13					13
			Total					33	7	66	39					145
	Calawah River	400	Chinook								7					7
Coho									7	20				27		
Jackcoho										7				7		
Total									7	34				41		

**Table 23. 2008-2009 Freshwater Salmon Sport Catch by Area and Month (continued)**

COASTAL RIVER SYSTEMS																	
System	Stream	CRC Code	Species	2008									2009			Total	
				Apr	May	Jun	Jul	Aug	Sep	Oct	Nov	Dec	Jan	Feb	Mar		
Quillayute R. System (cont.)	Dickey River (Clallam Co)	402	Coho								7					7	
			Jackchin									7					7
			Total										14				
	Quillayute River	404	Chinook					7				20					27
			Coho				13	7	20			26					66
			Jackcoho									26					26
			Total				13	14	20			72					119
	Sol Duc River	406	Chinook	20	59	111	33	13			111	33				7	387
			Coho				7	65	52		300	72					496
Sockeye						13										13	
Jackchin						13					26	7				46	
Jackcoho											104	20				124	
Total			20	59	111	66	78	52			541	132				7	1,066
Quinault R. System	Quinault River	410	Chinook		8		8					8				24	
			Chum							15							15
			Coho											8			8
			Total		8		8				15		8	8			47
Raft R. System	Raft River	414	Jackcoho								15					15	
			Total									15					15
Sooes R. System	Sooes River (Clallam Co.)	418	Chinook					15	8							23	
			Jackchin		8			8	15								31
			Total		8			23	23								54
Van Winkle Creek	Van Winkle Creek	419	Coho								15					15	
			Total									15					15
Waatch R. System	Waatch River	420	Chinook					8								8	
			Total					8									8

Table 23. 2008-2009 Freshwater Salmon Sport Catch by Area and Month (continued)

COASTAL RIVER SYSTEMS																
System	Stream	CRC Code	Species	2008									2009			Total
				Apr	May	Jun	Jul	Aug	Sep	Oct	Nov	Dec	Jan	Feb	Mar	
Willapa Bay	Bear River (Pacific Co)	305	Chum							75						75
			Coho						6							6
			Total						6	75						81
	Naselle River	375	Chinook					125	256	56	13					450
			Chum							19					19	
			Coho							38	13	13			64	
			Jackchin					31	25	6					62	
			Jackcoho							6					6	
			Total					156	325	94	26				601	
Nemah River	379	Chinook						25	119					144		
		Chum							6				6			
		Coho							13	113	6		132			
		Jackchin								6			6			
		Jackcoho								13			13			
		Total							38	257	6			301		
Niawiakum River	389	Coho						6						6		
		Total						6						6		
North River	382	Coho							25	6				31		
		Jackcoho							6				6			
		Total							31	6				37		
Smith Creek (Pacific Co)	384	Coho							13	19				32		
		Jackcoho							94				94			
		Total							107	19				126		
Willapa River	424	Chinook					56	288	63	6				413		
		Coho					19	44	100	106	75	19	363			
		Jackchin					25	6					31			
		Jackcoho						25	13	6			44			
		Total					100	363	176	118	75	19	851			

**Table 23. 2008-2009 Freshwater Salmon Sport Catch by Area and Month (continued)**

COASTAL RIVER SYSTEMS																
System	Stream	CRC Code	Species	2008								2009			Total	
				Apr	May	Jun	Jul	Aug	Sep	Oct	Nov	Dec	Jan	Feb		Mar
<b>Coastal River Totals</b>			Chinook	20	67	118	41	224	642	612	87				7	1,818
			Chum						15	100						115
			Coho				20	124	421	3,140	619	224	32			4,580
			Sockeye				13									13
			Jackchin		8	7	13	64	98	209	7					406
			Jackcoho						615	1,116	113	6				1,850
			<b>Total</b>	<b>20</b>	<b>75</b>	<b>125</b>	<b>87</b>	<b>412</b>	<b>1,791</b>	<b>5,177</b>	<b>826</b>	<b>230</b>	<b>32</b>		<b>7</b>	<b>8,782</b>

**Table 23. 2008-2009 Freshwater Salmon Sport Catch by Area and Month (continued)**

COLUMBIA RIVER SYSTEMS																
System	Stream	CRC Code	Species	2008								2009			Total	
				Apr	May	Jun	Jul	Aug	Sep	Oct	Nov	Dec	Jan	Feb		Mar
Columbia R. Mainstem	B10 Line - Rocky Pt - Tongue Pt Line	519	Chinook					2,696	2							2,698
			Coho					4,017								4,017
			Total					6,713	2							6,715
Columbia - below Bonneville	521	Chinook	7,769		1,278				5,947	56			6	9	1,944	17,009
		Coho					61	898	285	13						1,257
		Sockeye			251	25										276
		Jackchin	82		176	24			323	7					7	619
		Jackcoho					57	139	15							211
		Total	7,851		1,705	49	118	7,307	363	13				6	9	1,951

Table 23. 2008-2009 Freshwater Salmon Sport Catch by Area and Month (continued)

COLUMBIA RIVER SYSTEMS																	
System	Stream	CRC Code	Species	2008									2009			Total	
				Apr	May	Jun	Jul	Aug	Sep	Oct	Nov	Dec	Jan	Feb	Mar		
Cowlitz R. System	Cispus River	555	Coho							89	76	19				184	
			Jackcoho								13						13
			Total								102	76	19				197
Cowlitz R. below Mayfield Dam	561	Chinook	Coho	273	152	13	83	83	617	386	32	6	13		89	1,747	
			Jackchin	19	70		19	120	443	184	6					861	
			Jackcoho					57	772	1,379	70	13				6	
			Total	292	222	13	159	532	5,580	9,550	868	38	13			95	
																	17,362
Cowlitz R. between Mayfield & Cowlitz Falls Dams	563	Chinook	Coho						19						6	25	
			Jackcoho						95	13	89						
			Total					13	114	13	95				6		
																241	
Cowlitz R. above Cowlitz Falls Dam	559	Chinook	Coho					6	19	25	13				63	63	
			Jackcoho						82	798	316	13	6		1,215		
			Total					6	101	861	348	19	6		63		
																1,341	
Green River (Cowlitz Co)	565	Chinook	Coho					6	57						63	63	
			Jackchin					6	918	513					1,437		
			Total					12	1,000	513					25		
																1,525	
Tilton River	571	Chinook	Coho						44						44	44	
			Jackchin						32	241	260	57			590		
			Jackcoho							6					6		
			Total						32	342	266	57			57		
																697	

**Table 23. 2008-2009 Freshwater Salmon Sport Catch by Area and Month (continued)**

COLUMBIA RIVER SYSTEMS																
System	Stream	CRC Code	Species	2008								2009			Total	
				Apr	May	Jun	Jul	Aug	Sep	Oct	Nov	Dec	Jan	Feb		Mar
Cowlitz R. System (cont.)	Toutle River	573	Chinook						19	6					25	
			Coho						124	28					152	
			Jackchin						6						6	
			Jackcoho								6				6	
			Total						149	40					189	
	Toutle River, No Fork	575	Chinook						456	32	13				501	
			Coho					19	2,240	108					2,367	
			Jackchin						13						13	
			Jackcoho						19						19	
			Total					19	2,728	140	13				2,900	
Lewis R. System	Lewis River	611	Chinook	58	90	26	6							13	193	
			Coho					20	105	196					321	
			Jackchin		6										6	
			Jackcoho					6	19	90					115	
			Total	58	96	26	6	26	124	286					635	
	Lewis River, North Fork	615	Chinook	186	365	6	6						32		13	608
			Coho			6	6	167	4,186	2,955	603	154	13			8,090
			Jackchin	19	19	6	6	6	6							62
			Jackcoho					647	2,756	731	71	13				4,218
			Total	205	384	18	18	820	6,948	3,686	674	167	45		13	12,978
Lower Columbia	Deep River (Wahkiakum Co)	580	Coho							12					12	
			Total							12					12	
	Elochoman River	583	Chinook						25						25	
			Coho						12	50	106	12			180	
			Jackcoho						6	19	12				37	
Total						43	69	118	12			242				

Table 23. 2008-2009 Freshwater Salmon Sport Catch by Area and Month (continued)

COLUMBIA RIVER SYSTEMS																	
System	Stream	CRC Code	Species	2008								2009			Total		
				Apr	May	Jun	Jul	Aug	Sep	Oct	Nov	Dec	Jan	Feb		Mar	
Lower Columbia (cont.)	Grays River	595	Chinook				6		25							31	
			Coho						81	218						299	
			Jackchin							56							56
			Jackcoho							6							6
			Total				6		168	218							392
	Grays River, West Fork	596	Chinook								19						19
			Coho						75	574							649
			Jackchin								6						6
			Jackcoho							168	150						318
			Total							243	749						992
	Kalama River	604	Chinook	106	112	19	6	191	568	51	7					6	1,066
			Coho				25	146	892	1,472	162						2,697
			Jackchin	6		6	6	37	19								74
			Jackcoho					12	44	19	6	6					87
			Total	112	112	25	37	386	1,523	1,542	175	6				6	3,924
	Washougal River	667	Chinook					125	649	12							786
			Coho						31	44	12						87
			Jackchin					75	25		6						106
			Jackcoho						19		6						25
			Total					200	724	56	24						1,004
<b>Lower Columbia System Totals</b>			Chinook	8,392	719	1,342	107	3,107	8,403	631	65	6	51	9	2,071	24,903	
			Coho			6	88	4,708	13,519	15,197	2,397	274	19			36,208	
			Sockeye			251	25									276	
			Jackchin	126	95	188	55	238	916	203	12				7	1,840	
			Jackcoho					792	3,948	2,511	196	38			6	7,491	
			<b>Total</b>	<b>8,518</b>	<b>814</b>	<b>1,787</b>	<b>275</b>	<b>8,845</b>	<b>26,786</b>	<b>18,542</b>	<b>2,670</b>	<b>318</b>	<b>70</b>	<b>9</b>	<b>2,084</b>	<b>70,718</b>	



Table 23. 2008-2009 Freshwater Salmon Sport Catch by Area and Month (continued)

COLUMBIA RIVER SYSTEMS																
System	Stream	CRC Code	Species	2008								2009			Total	
				Apr	May	Jun	Jul	Aug	Sep	Oct	Nov	Dec	Jan	Feb		Mar
Big White Salmon River	Big White Salmon River	508	Chinook	40	26		7	66	165	13						317
			Coho						92	119						211
			Jackchin					7	7							14
			Total	40	26		7	73	264	132						542
Klickitat River	Klickitat River	607	Chinook		6	83	32	32	610	461	19				1,243	
			Coho						71	717	617				1,405	
			Jackchin		13	45	13	19	146	38					274	
			Jackcoho						6	159	32				197	
			Total		19	128	45	51	833	1,375	668				3,119	
Little White Salmon River & Drano Lake	Little White Salmon River & Drano Lake	618	Chinook	393	693	19	6	125	135	100				6	1,477	
			Coho					6	64	144	6				220	
			Jackchin	12	131		6	19	44	6					218	
			Jackcoho						6	12					18	
			Total	405	824	19	12	150	249	262	6				6	1,933
Mid Columbia	Columbia R 05: Bonneville to The Dalles	527	Chinook	84	26	6		414	524	194		26			1,274	
			Coho						78	867	32				977	
			Jackchin		6			32	91						129	
			Jackcoho							78					78	
			Total	84	32	6		446	693	1,139	32	26			2,458	
	Columbia R 06: The Dalles to John Day	529	Chinook	505	362	142	32	6	39	19	26	19			1,150	
			Coho						52	58					110	
			Jackchin	26	71	32		19							148	
			Total	531	433	174	32	25	91	77	26	19			1,408	
	Columbia R 07: John Day to McNary Dam	531	Chinook	181	104	97		6	39	6	6				452	
			Jackchin	6	13	39		6	19						83	
			Jackcoho						6	6					12	
Total			187	117	136		12	64	12	6				13	547	

Table 23. 2008-2009 Freshwater Salmon Sport Catch by Area and Month (continued)

COLUMBIA RIVER SYSTEMS																
System	Stream	CRC Code	Species	2008									2009			Total
				Apr	May	Jun	Jul	Aug	Sep	Oct	Nov	Dec	Jan	Feb	Mar	
Wind R. System	Wind River above Shipherd Falls	677	Chinook	19	364	223										606
			Jackchin		19	32										51
			Total	19	383	255										657
	Wind River below Shipherd Falls	680	Chinook	313	887	134		83	70	48						1,535
			Coho						57	54						111
			Jackchin	13	77	32										122
			Jackcoho							6						6
	<b>Total</b>			326	964	166		83	127	108						1,774
<b>Middle Columbia System Totals</b>			Chinook	1,535	2,468	704	77	732	1,582	841	51	45			19	8,054
			Coho					6	414	1,959	655				3,034	
			Jackchin	57	330	180	19	102	307	44					1,039	
			Jackcoho						18	261	32				311	
<b>Total</b>				<b>1,592</b>	<b>2,798</b>	<b>884</b>	<b>96</b>	<b>840</b>	<b>2,321</b>	<b>3,105</b>	<b>738</b>	<b>45</b>			<b>19</b>	<b>12,438</b>

**Table 23. 2008-2009 Freshwater Salmon Sport Catch by Area and Month (continued)**

COLUMBIA RIVER SYSTEMS																
System	Stream	CRC Code	Species	2008									2009			Total
				Apr	May	Jun	Jul	Aug	Sep	Oct	Nov	Dec	Jan	Feb	Mar	
Okanogan R. System	Okanogan River	627	Chinook				15		31							46
			Sockeye				15									15
			Total				30		31							61
	Similkameen River	629	Chinook					31	31							62
			Sockeye					8								8
			Jackchin								1				1	
	Total						39	31		1				71		
Upper Columbia	Columbia McNary Dam to Hwy 395 Bridge	533	Chinook					6	25	115						146
			Coho							25						25
			Jackchin							13	25					38
			Jackcoho								13					13
			Total					6	38	178						222
	Columbia Hwy 395 Bridge-Priest Rapids Dam	535	Chinook		89	13	38	45	2,231	3,289						5,705
			Coho						45	38						83
			Sockeye			13	13									26
			Jackchin			6	6			726	783	25				1,546
			Jackcoho							38	51					89
		Total		89	32	57	45	3,040	4,161	25					7,449	
	Columbia Priest Rapids to Chief Joseph Dam	537	Chinook				2,006	1,035	920	646						4,607
			Coho					6								6
			Sockeye				219	120	7							346
			Jackchin				337	204	280	64						885
Total						2,562	1,365	1,207	710						5,844	

Table 23. 2008-2009 Freshwater Salmon Sport Catch by Area and Month (continued)

COLUMBIA RIVER SYSTEMS																
System	Stream	CRC Code	Species	2008									2009			Total
				Apr	May	Jun	Jul	Aug	Sep	Oct	Nov	Dec	Jan	Feb	Mar	
Wenatchee R. System	Icicle Creek	672	Chinook		82	488	38							6		614
			Jackchin			32	6									38
			Total		82	520	44								6	
	Lake Wenatchee	670	Sockeye					4,521								4,521
			Total					4,521								4,521
Yakima R. System	Yakima River	690	Chinook		45	466			240	300						1,051
			Coho							33						33
			Jackchin			75			29	42						146
			Jackcoho						21	21						42
			Total		45	541			290	396						
<b>Upper Columbia System Totals</b>			Chinook		216	967	2,097	1,117	3,478	4,350				6		12,231
			Coho					6	45	96					147	
			Sockeye			13	247	4,649	7						4,916	
			Jackchin			113	349	204	1,048	915	25				2,654	
			Jackcoho					59	85						144	
			<b>Total</b>		<b>216</b>	<b>1,093</b>	<b>2,693</b>	<b>5,976</b>	<b>4,637</b>	<b>5,446</b>	<b>25</b>			<b>6</b>	<b>20,092</b>	

**Table 23. 2008-2009 Freshwater Salmon Sport Catch by Area and Month (continued)**

COLUMBIA RIVER SYSTEMS																
System	Stream	CRC Code	Species	2008									2009			Total
				Apr	May	Jun	Jul	Aug	Sep	Oct	Nov	Dec	Jan	Feb	Mar	
Snake R. System	Snake River below Ice Harbor Dam	640	Chinook	51	125			6								182
			Total	51	125			6								182
	Snake River Lower Monumental to Little Goose Dam	644	Chinook	153	187											340
			Jackchin		13					6						19
	Total	153	200						6						359	
	Snake River Little Goose to Lower Granite Dam	646	Chinook	7												7
			Total	7												7
	Snake River Lower Granite to Interstate Bridge	648	Chinook		14											14
			Total		14											14
	Snake River above Interstate Bridge	650	Chinook		7											7
			Coho				13									13
	Total				7		13									20
<b>Snake River System Totals</b>			Chinook	211	333			6							550	
			Coho				13								13	
			Jackchin		13					6					19	
			<b>Total</b>	<b>211</b>	<b>346</b>		<b>13</b>	<b>6</b>		<b>6</b>					<b>582</b>	

Table 23. 2008-2009 Freshwater Salmon Sport Catch by Area and Month (continued)

PUGET SOUND RIVER SYSTEMS																
System	Stream	CRC Code	Species	2008									2009			Total
				Apr	May	Jun	Jul	Aug	Sep	Oct	Nov	Dec	Jan	Feb	Mar	
Chambers Cr. System	Chambers Creek	714	Chinook					61	15							76
			Coho						8	8						16
			Jackchin					8								8
			Total					69	23	8						100
Deschutes R. System	Deschutes River	728	Chinook					31	106	37					174	
			Jackchin						6					6	12	
			Total					31	112	37				6	186	
Dewatto R. System	Dewatto River	732	Coho						28	256					284	
			Total						28	256					284	
Duckabush R. System	Duckabush River	736	Chum								15	15			30	
			Total								15	15			30	
Elwha R. System	Elwha River	742	Coho							15					15	
			Total							15					15	
Green-Duwamish R. System	Green - Duwamish River	746	Chinook						102	20					122	
			Chum								58	439	246			743
			Coho						336	291						627
			Jackchin						13							13
			Jackcoho						39	13						52
Total						490	382	439	246				1,557			
Kennedy Cr. System	Kennedy Creek	754	Chum							267	143	7			417	
			Total							267	143	7			417	
Lake Washington System	Lake Sammamish	764	Chinook					111	105						216	
			Coho						6						6	
			Total					111	111						222	
Lake Washington System	Lake Washington	762	Coho						19	31					50	
			Jackcoho							6					6	
			Total						19	37					56	

**Table 23. 2008-2009 Freshwater Salmon Sport Catch by Area and Month (continued)**

PUGET SOUND RIVER SYSTEMS																			
System	Stream	CRC Code	Species	2008									2009			Total			
				Apr	May	Jun	Jul	Aug	Sep	Oct	Nov	Dec	Jan	Feb	Mar				
Minter Cr. System	Minter Creek	778	Chum								13	4,978	1,299				6,290		
			Total									13	4,978	1,299				6,290	
Nisqually R. System	Nisqually River	786	Chinook				32	501	906	122								1,561	
			Chum							19	32	405	1,651	173				2,280	
			Coho					19	610	520									1,149
			Sockeye							6									6
			Jackchin						193	360	13								566
			Jackcoho						6	26	32								64
			Total					32	719	1,927	719	405	1,651	173					5,626
Nooksack Samish R. System	Dakota Creek (Whatcom Co)	724	Coho						19	162							181		
			Total						19	162								181	
	Nooksack River	788	Chinook							14								14	
			Chum											13				13	
			Coho							83	84	78	52					297	
			Jackcoho							13	6							19	
			Total							110	90	78	65					343	
	Samish River	816	Chinook						552	4,016	428							4,996	
			Chum								84							84	
			Coho						6	136	78							220	
Jackchin						13	6	32	6								57		
Jackcoho									13								13		
Total						13	564	4,197	596								5,370		
Whatcom Creek	884	Chum								19	415	19					453		
		Coho									13						13		
		Jackchin									6	52					58		
		Total									25	480	19				524		

Table 23. 2008-2009 Freshwater Salmon Sport Catch by Area and Month (continued)

PUGET SOUND RIVER SYSTEMS																
System	Stream	CRC Code	Species	2008									2009			Total
				Apr	May	Jun	Jul	Aug	Sep	Oct	Nov	Dec	Jan	Feb	Mar	
Puyallup R. System	Carbon River	802	Chinook						654	83						737
			Coho						722	693	13				1,428	
			Jackchin						64						64	
			Jackcoho						57	26	6				89	
			Total						1,497	802	19				2,318	
	Puyallup River	804	Chinook					396	365	20	19					800
			Chum								89	153			242	
			Coho					1,028	2,010	274	26	6			3,344	
			Jackchin					19	19	26					64	
			Jackcoho					83	198		6				287	
Total					1,526	2,592	320	140	159			4,737				
Quilcene R. System	Quilcene River	812	Coho					423	470	53					946	
			Jackcoho						20					20		
			Total					423	490	53				966		
Skagit R. System	Cascade River	826	Chinook			222	12								234	
			Coho						49	321	19				389	
			Total			222	12		49	321	19				623	
	Skagit River	830	Chinook			31	6									37
			Chum							469	56				525	
			Pink							2					2	
			Coho							558	578	43	6		1,185	
Sockeye			80	253								333				
Jackchin			6									6				
Total			117	259			560	1,047	99	6			2,088			



**Table 23. 2008-2009 Freshwater Salmon Sport Catch by Area and Month (continued)**

PUGET SOUND RIVER SYSTEMS																
System	Stream	CRC Code	Species	2008								2009			Total	
				Apr	May	Jun	Jul	Aug	Sep	Oct	Nov	Dec	Jan	Feb		Mar
Skokomish R. System	Skokomish River	834	Chinook				688	4,552	644							5,884
			Chum							1,902	279	6				2,187
			Coho					57	171	1,821	32					2,081
			Jackchin				6	57	31							94
			Jackcoho								25					25
			Total			694	4,666	846	3,748	311	6					10,271
Snohomish R. System	Skykomish River	844	Chinook		6	179	210									395
			Chum						6	512	222	25				765
			Pink								1					1
			Coho			6				308	654	148	12			1,128
			Jackchin			12	25									37
			Jackcoho								12					12
			Total		6	197	235		314	1,179	370	37				2,338
	Snohomish River	850	Chum							160	93					253
			Coho						413	352					765	
			Jackcoho						19						19	
			Total						432	512	93				1,037	
	Snoqualmie River	852	Coho						12	37	19				68	
			Total						12	37	19				68	
Stillaguamish River	872	Chum									12			12		
		Coho							12	25	12			49		
		Total							12	25	24			61		
Tahuya R. System	Tahuya River	878	Coho						53	543			7		603	
			Total						53	543			7		603	

Table 23. 2008-2009 Freshwater Salmon Sport Catch by Area and Month (continued)

PUGET SOUND RIVER SYSTEMS																	
System	Stream	CRC Code	Species	2008									2009			Total	
				Apr	May	Jun	Jul	Aug	Sep	Oct	Nov	Dec	Jan	Feb	Mar		
<b>Puget Sound System Totals</b>			Chinook		6	432	948	6,204	6,927	710	19						15,246
			Chum						25	3,516	7,134	3,446	173			14,294	
			Pink						2	1						3	
			Coho			6		1,533	6,011	6,783	416	88	7			14,844	
			Sockeye			80	253		6							339	
			Jackchin			18	44	283	525	51	52				6	979	
			Jackcoho					89	385	120	12					606	
			<b>Total</b>		<b>6</b>	<b>536</b>	<b>1,245</b>	<b>8,109</b>	<b>13,881</b>	<b>11,181</b>	<b>7,633</b>	<b>3,534</b>	<b>180</b>		<b>6</b>	<b>46,311</b>	

Table 23. 2008-2009 Freshwater Salmon Sport Catch by Area and Month (continued)

UNKNOWN AREAS																
System	Stream	CRC Code	Species	2008									2009			Total
				Apr	May	Jun	Jul	Aug	Sep	Oct	Nov	Dec	Jan	Feb	Mar	
<b>Unknown Totals</b>			Chinook	72	33	72	75	92	179	39		7	7	7	7	590
			Chum							52	39	13	7			111
			Pink					33								33
			Coho	7			30	139	234	131	26	20	7			594
			Sockeye					13				7				20
			Jackchin		7	13		20	46	7						93
			Jackcoho				7	20		33	7					67
			<b>Total</b>	<b>79</b>	<b>40</b>	<b>85</b>	<b>112</b>	<b>317</b>	<b>459</b>	<b>262</b>	<b>72</b>	<b>47</b>	<b>21</b>	<b>7</b>	<b>7</b>	<b>1,508</b>

**Table 24. 2008-2009 Washington Sport Salmon Fishing, by Residence**

County of Residence	Number Catch Record Cards	Population by County	% Catch Record Card Holders	Total Freshwater Salmon Catch	Total Marine Salmon Catch	Total Salmon	Average Catch per Card
Adams	1,741	17,257	10.1	161	131	292	0.17
Asotin	3,014	21,385	14.1	110	10	120	0.04
Benton	20,729	164,020	12.6	4,870	704	5,574	0.27
Chelan	8,307	71,308	11.6	4,735	349	5,084	0.61
Clallam	9,966	70,937	14.0	865	4,366	5,231	0.52
Clark	44,398	424,666	10.5	22,625	3,168	25,793	0.58
Columbia	733	3,970	18.5	39	84	123	0.17
Cowlitz	20,730	101,537	20.4	15,365	1,249	16,614	0.8
Douglas	3,984	36,993	10.8	1,311	197	1,508	0.38
Ferry	362	7,393	4.9	19	31	50	0.14
Franklin	7,707	73,186	10.5	1,098	291	1,389	0.18
Garfield	449	2,117	21.2	129		129	0.29
Grant	5,775	85,616	6.7	859	694	1,553	0.27
Grays Harbor	11,327	71,447	15.9	3,533	3,891	7,424	0.66
Island	11,192	80,847	13.8	504	1,768	2,272	0.2
Jefferson	4,043	29,592	13.7	426	2,379	2,805	0.69
King	96,167	1,880,000	5.1	16,890	16,978	33,868	0.35
Kitsap	23,012	239,865	9.6	3,359	7,017	10,376	0.45
Kittitas	3,228	39,151	8.2	769	378	1,147	0.36
Klickitat	3,459	20,391	17.0	1,886	37	1,923	0.56
Lewis	12,025	74,362	16.2	7,802	1,028	8,830	0.73
Lincoln	828	10,322	8.0	342	331	673	0.81
Mason	7,525	57,717	13.0	2,325	2,063	4,388	0.58
Okanogan	4,618	40,115	11.5	963	33	996	0.22
Pacific	4,026	21,358	18.9	1,589	2,250	3,839	0.95
Pend Oreille	529	12,948	4.1	110	94	204	0.39
Pierce	66,611	787,099	8.5	19,467	13,502	32,969	0.49
San Juan	2,105	15,462	13.6	136	561	697	0.33
Skagit	15,712	118,373	13.3	3,275	2,065	5,340	0.34
Skamania	1,575	10,864	14.5	672	8	680	0.43
Snohomish	59,831	685,296	8.7	8,196	7,772	15,968	0.27
Spokane	19,193	462,408	4.2	3,597	882	4,479	0.23
Stevens	1,806	42,183	4.3	330	341	671	0.37
Thurston	24,319	245,571	9.9	9,694	6,163	15,857	0.65
Wahkiakum	1,189	4,058	29.3	543	140	683	0.57
Walla Walla	5,756	58,149	9.9	911	99	1,010	0.18
Whatcom	17,721	196,960	9.0	2,383	1,895	4,278	0.24
Whitman	2,449	42,027	5.8	194	55	249	0.1
Yakima	20,619	234,881	8.8	4,683	1,150	5,833	0.28
Unknown WA	1,634			426	155	581	0.36
<b>Washington Total</b>	<b>550,394</b>	<b>6,570,000</b>	<b>8.4</b>	<b>147,191</b>	<b>84,309</b>	<b>231,500</b>	<b>0.42</b>
Other State Total	50,851			12,995	5,667	18,662	0.37
Canada	1,750			32	77	109	0.06
Other	545			19		19	0.03
<b>Grand Total</b>	<b>603,540</b>			<b>160,237</b>	<b>90,053</b>	<b>250,290</b>	<b>0.41</b>

Note: The figures do not accurately multiply across because of the bias adjustment factor and rounding of numbers. Source: Table

1: Annual Estimates of the Resident Population for Counties of Washington: April 1, 2000 to July 1, 2009

(CO-EST2009-01-53). Source: Population Division, U.S. Census Bureau. Release Date: March, 2010.

Table 25. 2008-2009 Frequency Distribution of Estimated Salmon Catch Record Cards and Catch

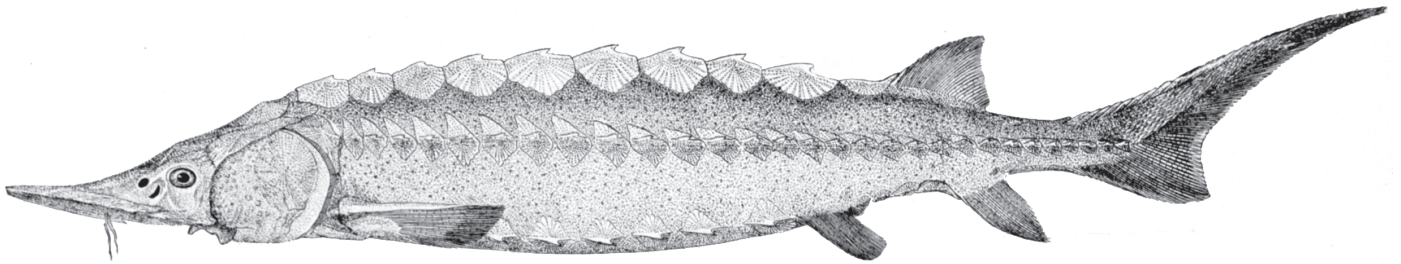
#Salmon per Catch Record Card	Number of Cards	Cumulative Number of Cards	Percent Cards	Cumulative Percent Cards	Total Catch	Cumulative Total Catch	Percent Catch	Cumulative Percent Catch
0	537,609	537,609	89.08%	89.08%	0	0	0.00%	0.00%
1	23,798	561,407	3.94%	93.02%	23,798	23,798	9.51%	9.51%
2	14,808	576,215	2.45%	95.47%	29,616	53,414	11.83%	21.34%
3	6,833	583,048	1.13%	96.60%	20,499	73,913	8.19%	29.53%
4	4,850	587,898	0.80%	97.41%	19,400	93,313	7.75%	37.28%
5	3,285	591,183	0.54%	97.95%	16,425	109,738	6.56%	43.84%
6	2,361	593,544	0.39%	98.34%	14,166	123,904	5.66%	49.50%
7	1,642	595,186	0.27%	98.62%	11,494	135,398	4.59%	54.09%
8	1,386	596,572	0.23%	98.85%	11,088	146,486	4.43%	58.52%
9	962	597,534	0.16%	99.01%	8,658	155,144	3.46%	61.98%
10	828	598,362	0.14%	99.14%	8,280	163,424	3.31%	65.29%
11	757	599,119	0.13%	99.27%	8,327	171,751	3.33%	68.62%
12	635	599,754	0.11%	99.37%	7,620	179,371	3.04%	71.66%
13	468	600,222	0.08%	99.45%	6,084	185,455	2.43%	74.09%
14	423	600,645	0.07%	99.52%	5,922	191,377	2.37%	76.46%
15	468	601,113	0.08%	99.60%	7,020	198,397	2.80%	79.26%
16	289	601,402	0.05%	99.65%	4,624	203,021	1.85%	81.11%
17	212	601,614	0.04%	99.68%	3,604	206,625	1.44%	82.55%
18	218	601,832	0.04%	99.72%	3,924	210,549	1.57%	84.12%
19	192	602,024	0.03%	99.75%	3,648	214,197	1.46%	85.58%
20	167	602,191	0.03%	99.78%	3,340	217,537	1.33%	86.91%
21	212	602,403	0.04%	99.81%	4,452	221,989	1.78%	88.69%
22	160	602,563	0.03%	99.84%	3,520	225,509	1.41%	90.10%
23	122	602,685	0.02%	99.86%	2,806	228,315	1.12%	91.22%
24	135	602,820	0.02%	99.88%	3,240	231,555	1.29%	92.51%
25	173	602,993	0.03%	99.91%	4,325	235,880	1.73%	94.24%
26	462	603,455	0.08%	99.99%	12,012	247,892	4.80%	99.04%
27	32	603,487	0.01%	99.99%	864	248,756	0.35%	99.39%
28	26	603,513	0.00%	100.00%	728	249,484	0.29%	99.68%
30	13	603,526	0.00%	100.00%	390	249,874	0.16%	99.84%
32	13	603,539	0.00%	100.00%	416	250,290	0.16%	100.00%
<b>Total</b>	<b>603,539</b>		<b>100.00%</b>		<b>250,290</b>		<b>100.00%</b>	

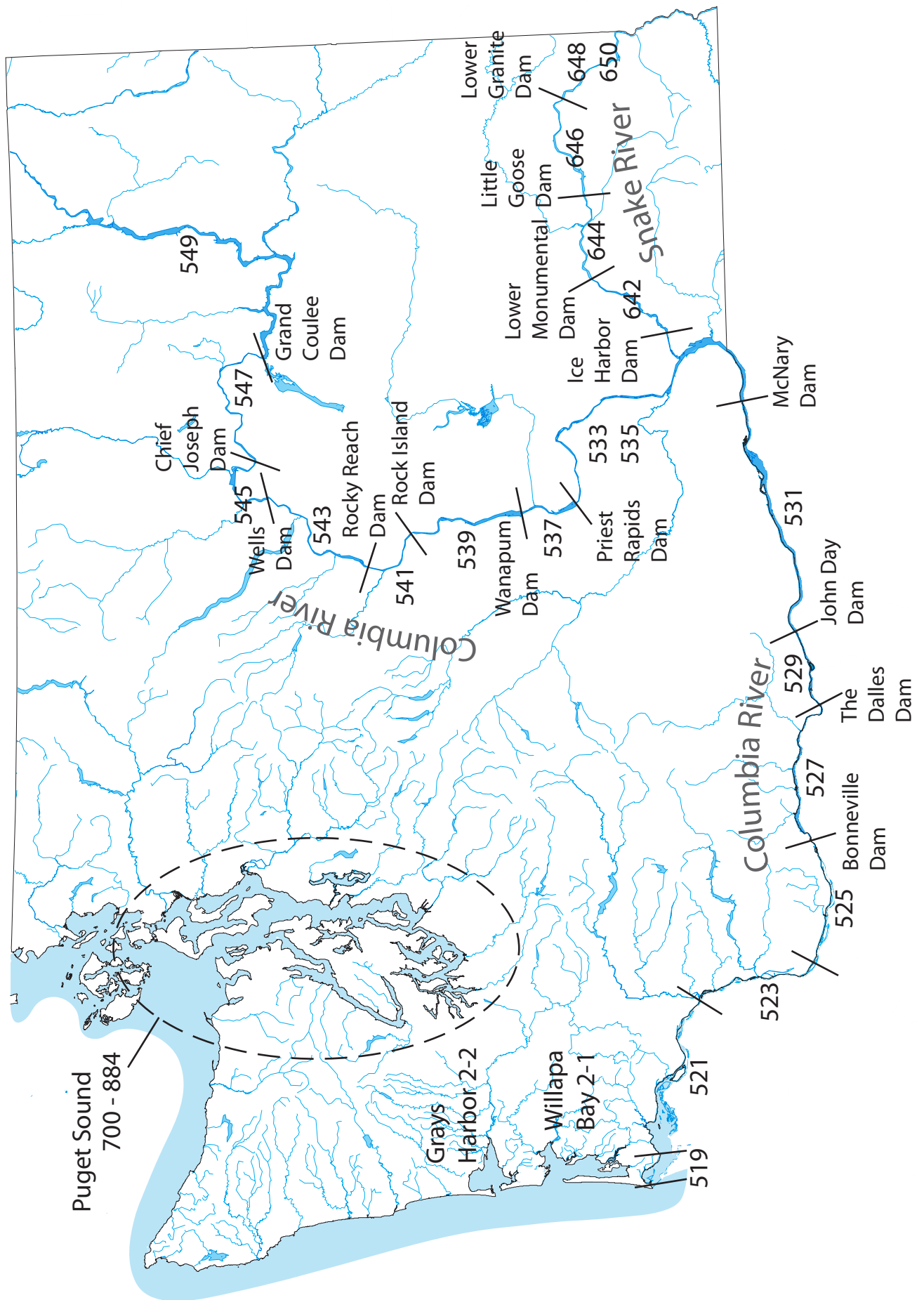
**Table 26. 2008-2009 Sport Salmon Inventory of Catch Record Cards Received**

Response Type	With Catch		No catch		Total Cards & Letters	Number of Salmon			Catch per Card		
	Catch Records	Reminder Letters	Catch Records	Reminder Letters		Catch Records	Reminder Letters	Total	Catch Records	Reminder Letters	Total
Prior to reminder	1,045		3,563		4,608	3,213		3,213	0.70		0.70
After reminder postcard	6,133		30,568		36,701	24,342		24,342	0.66		0.66
After 1st reminder letter	1,299	783	3,901	28,570	34,553	4,776	2,174	6,950	0.92	0.07	0.20
From license dealer	927		2,365		3,292	4,347		4,347	1.32		1.32
<b>Total</b>	<b>9,404</b>	<b>783</b>	<b>40,397</b>	<b>28,570</b>	<b>79,154</b>	<b>36,678</b>	<b>2,174</b>	<b>38,852</b>	<b>0.74</b>	<b>0.07</b>	<b>0.49</b>



# Sturgeon







# DESCRIPTION OF STURGEON CATCH RECORD CARD AREAS

---

## Columbia River

519	Buoy 10 to Megler - Astoria Bridge
521	Megler - Astoria Bridge to Longview Bridge
523	Longview Bridge to I-5 Bridge
525	I-5 Bridge to Bonneville Dam
527	Bonneville to the Dalles Dam
529	The Dalles Dam to John Day Dam
531	John Day to McNary Dam
533	McNary Dam to Pasco
535	Pasco to Priest Rapids Dam
537	Priest Rapids Dam to Wanapum Dam
539	Wanapum to Rock Island Dam
541	Rock Island to Rocky Reach Dam
543	Rocky Reach to Wells Dam
545	Wells to Chief Joseph Dam
547	Chief Joseph to Grand Coulee Dam
549	Grand Coulee Dam to Canadian Border

## Snake River

640	Below Ice Harbor Dam
642	Ice Harbor to Lower Monumental Dam
644	Lower Monumental to Little Goose Dam
646	Little Goose to Lower Granite Dam
648	Lower Granite to Clarkston
650	Upstream of Interstate Bridge, Clarkston

## Other - including Puget Sound

2-1	Willapa Bay
2-2	Grays Harbor
700 - 884	Puget Sound

Table 27. 2008-2009 Sport Sturgeon Catch, by Area and Month (

COASTAL RIVER SYSTEMS															
Catch Area	Species	2008										2009			Total
		Apr	May	Jun	Jul	Aug	Sep	Oct	Nov	Dec	Jan	Feb	Mar		
Area 2-1: Willapa Bay	White			15	8				8						31
Chehalis R. below Black R.	White		8		31						8				47
Naselle River	White	15	15	8	46	53	23	23				8	84	53	328
Willapa River, South Fork	White		15												15
Willapa River	White			23	15				8	8					54
<b>Total</b>	<b>White</b>	<b>15</b>	<b>38</b>	<b>46</b>	<b>100</b>	<b>53</b>	<b>23</b>	<b>39</b>	<b>8</b>	<b>8</b>	<b>8</b>	<b>84</b>	<b>53</b>	<b>475</b>	

Table 27. 2008-2009 Sport Sturgeon Catch, by Area and Month (continued)

COLUMBIA RIVER SYSTEMS															
Catch Area	Species	2008										2009			Total
		Apr	May	Jun	Jul	Aug	Sep	Oct	Nov	Dec	Jan	Feb	Mar		
Columbia R 01: Buoy 10 to Megler-Astoria Bridge	White	6	493	2,332	1,297										4,128
Columbia R 02: Megler-Astoria Bridge to Longview Bridge	White	5	535	2,353	1,357	45	23	55	9						4,382
Columbia R 03: Longview Br. to I-5 Bridge	White	80	66	25		45	111	97	49		10	24	8		515
Columbia R 04: I-5 Bridge to Bonneville Dam	White	60	144	27	4	169	697	1,146	398						2,645
Columbia R 05: Bonneville to The Dalles Dam	White	9	52	66	156						7	28	35		353
Columbia R 06: The Dalles to John Day Dam	White												9		9
Columbia R 07: John Day to McNary Dam	White													18	18
Columbia R 08: McNary Dam - Hwy 395 Bridge in Pasco	White		8	46	15	38	31		8	8				15	169
Columbia R 09: Hwy 395 Bridge to Priest Rapids Dam	White		15	15	15	38	46	23				8			160
Cowlitz R. below Mayfield Dam	White		23		8					31	76	31	53	31	253
Deep River (Wahkiakum Co.)	White		8									8			16
Snake R 1: Below Ice Harbor Dam	White					15	8								23
Snake R 2: Ice Harbor to Lower Monumental Dam	White				31	69					8				108
Snake R 3: Lower Monumental to Little Goose Dam	White			8	15	31									54
Snake R 4: Little Goose to Lower Granite Dam	White		38	23	61	23									145
<b>Total</b>	<b>White</b>	<b>160</b>	<b>1,382</b>	<b>4,895</b>	<b>2,959</b>	<b>473</b>	<b>916</b>	<b>1,321</b>	<b>495</b>	<b>92</b>	<b>56</b>	<b>113</b>	<b>116</b>		<b>12,978</b>

Table 27. 2008-2009 Sport Sturgeon Catch, by Area and Month (continued)

PUGET SOUND RIVER SYSTEMS															
Catch Area	Species	2008										2009			Total
		Apr	May	Jun	Jul	Aug	Sep	Oct	Nov	Dec	Jan	Feb	Mar		
Area 8-1: Skagit Bay-Saratoga Passage	White	8	15			8									31
Area 8-2: Port Susan-Port Gardner	White	46	115	138		8						23	15	345	
Skagit River	White					8	8	23	8	8			8	63	
Snohomish River	White					8						23	23	54	
Stillaguamish River	White		8											8	
<b>Total</b>	<b>White</b>	<b>54</b>	<b>138</b>	<b>138</b>		<b>32</b>	<b>8</b>	<b>23</b>	<b>8</b>	<b>8</b>		<b>46</b>	<b>46</b>	<b>501</b>	

Table 27. 2008-2009 Sport Sturgeon Catch, by Area and Month (continued)

UNKNOWN AREAS															
Catch Area	Species	2008										2009			Total
		Apr	May	Jun	Jul	Aug	Sep	Oct	Nov	Dec	Jan	Feb	Mar		
Unknown Area Totals	White		69	122	53	46	46	23	15					374	

Table 27. 2008-2009 Sport Sturgeon Catch, by Area and Month (continued)

STATEWIDE TOTALS															
Catch Area	Species	2008										2009			Total
		Apr	May	Jun	Jul	Aug	Sep	Oct	Nov	Dec	Jan	Feb	Mar		
Statewide Totals	White	229	1,627	5,201	3,112	604	993	1,406	526	108	64	243	215	14,328	

**Table 28. 2008-2009 Washington Sport Sturgeon Fishing, by Residence**

County of Residence	Number Catch Record Cards	Population by County	% Catch Record Holders	Total Sturgeon	Average Catch per Catch Record Card
Adams	1,741	17,257	10.1	42	0.02
Asotin	3,014	21,385	14.1	9	0.00
Benton	20,729	164,020	12.6	196	0.01
Chelan	8,307	71,308	11.6	68	0.01
Clallam	9,966	70,937	14.0	161	0.02
Clark	44,398	424,666	10.5	2,773	0.06
Columbia	733	3,970	18.5	9	0.01
Cowlitz	20,730	101,537	20.4	1,624	0.08
Douglas	3,984	36,993	10.8	59	0.01
Ferry	362	7,393	4.9		
Franklin	7,707	73,186	10.5	102	0.01
Garfield	449	2,117	21.2		
Grant	5,775	85,616	6.7	119	0.02
Grays Harbor	11,327	71,447	15.9	374	0.03
Island	11,192	80,847	13.8	51	0.00
Jefferson	4,043	29,592	13.7	35	0.01
King	96,167	1,880,000	5.1	986	0.01
Kitsap	23,012	239,865	9.6	238	0.01
Kittitas	3,228	39,151	8.2	35	0.01
Klickitat	3,459	20,391	17.0	102	0.03
Lewis	12,025	74,362	16.2	774	0.06
Lincoln	828	10,322	8.0	17	0.02
Mason	7,525	57,717	13.0	136	0.02
Okanogan	4,618	40,115	11.5	17	0.00
Pacific	4,026	21,358	18.9	1,404	0.35
Pend Oreille	529	12,948	4.1		
Pierce	66,611	787,099	8.5	723	0.01
San Juan	2,105	15,462	13.6	17	0.01
Skagit	15,712	118,373	13.3	154	0.01
Skamania	1,575	10,864	14.5	94	0.06
Snohomish	59,831	685,296	8.7	876	0.01
Spokane	19,193	462,408	4.2	238	0.01
Stevens	1,806	42,183	4.3		
Thurston	24,319	245,571	9.9	391	0.02
Wahkiakum	1,189	4,058	29.3	187	0.16
Walla Walla	5,756	58,149	9.9	229	0.04
Whatcom	17,721	196,960	9.0	154	0.01
Whitman	2,449	42,027	5.8	35	0.01
Yakima	20,619	234,881	8.8	315	0.02
Unknown WA	1,634			35	0.02
<b>Washington Total</b>	<b>550,394</b>	<b>6,570,000</b>	<b>8.4</b>	<b>12,779</b>	<b>0.02</b>
Other State Total	50,851			1,540	0.03
Canada	1,750				
Other	545				
<b>Grand Total</b>	<b>603,540</b>			<b>14,319</b>	<b>0.02</b>

Note: The figures do not accurately multiply across because of the bias adjustment factor and rounding of numbers.

Source: Table 1: Annual Estimates of the Resident Population for Counties of Washington: April 1, 2000 to July 1, 2009 (CO-EST2009-01-53). Source: Population Division, U.S. Census Bureau. Release Date: March, 2010.

Table 29. 2008-2009 Frequency Distribution of Estimated Sturgeon Catch Record Cards and Catch

#Sturgeon per Catch Record Card	Number of Cards	Cumulative Number of Cards	Percent Cards	Cumulative Percent Cards	Total Catch	Cumulative Total Catch	Percent Catch	Cumulative Percent Catch
0	594,087	594,087	98.4%	98.4%	0	0	0.0%	0.0%
1	6,519	600,606	1.1%	99.5%	6,519	6,519	45.5%	45.5%
2	1,681	602,287	0.3%	99.8%	3,362	9,881	23.5%	69.0%
3	731	603,018	0.1%	99.9%	2,193	12,074	15.3%	84.3%
4	361	603,379	0.1%	100.0%	1,444	13,518	10.1%	94.4%
5	160	603,539	0.0%	100.0%	800	14,318	5.6%	100.0%
<b>Total</b>	<b>603,539</b>		<b>100.0%</b>		<b>14,318</b>		<b>100.0%</b>	

Table 30. 2008-2009 Sport Sturgeon Inventory of Catch Record Cards Received

Response Type	With Catch		No catch		Total Cards & Letters	Number of Sturgeon			Catch per Card		
	Catch Records	Reminder Letters	Catch Records	Reminder Letters		Catch Records	Reminder Letters	Total	Catch Records	Reminder Letters	Total
Prior to reminder	90		4,518		4,608	139		139	0.03		0.03
After reminder postcard	664		36,037		36,701	1,018		1,018	0.03		0.03
After 1st reminder letter	154	95	5,041	29,258	34,548	233	138	371	0.04	0.004	0.01
From license dealer	120		3,172		3,292	174		174	0.05		0.05
<b>Total</b>	<b>1,028</b>	<b>95</b>	<b>48,768</b>	<b>29,258</b>	<b>79,149</b>	<b>1,564</b>	<b>138</b>	<b>1,702</b>	<b>0.03</b>	<b>0.004</b>	<b>0.02</b>

# Steelhead

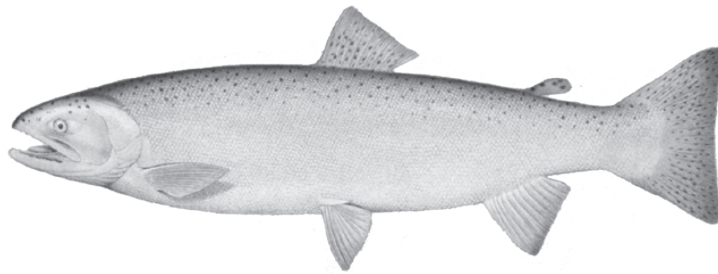


Table 31. 2008-2009 Steelhead Sport Catch, by Area and Month

COASTAL RIVERS AND MARINE CATCH AREAS																			
System	Water	Race	Mark	2008									2009			Total			
				Apr	May	Jun	Jul	Aug	Sep	Oct	Nov	Dec	Jan	Feb	Mar				
Chehalis R. System *	Cedar Creek (Grays Harbor Co.)	S	Marked	3												3			
		W	Marked										5			5			
	Chehalis R. above Black R.	S	Marked	3												3			
		W	Marked	5										8	10	10	36	18	87
	Chehalis R. below Black R.	S	Marked	15 3 3 3												24			
		W	Marked										5			33	15	3	56
	Chehalis River, So. Fork	S	Marked	3												3			
		W	Marked										3			3			
	Cloquallam Creek	W	Marked										3			3			
	Newaukum River	W	Marked										5			8	41	46	100
	Satsop River	S	Marked	12									15			27			
		W	Marked										8 33			91	71	81	284
	Satsop River, West Fork	W	Marked													8	18	26	
	Skookumchuck River	S	Marked	6									3			9			
		W	Marked	25										5 5			10	38	5
	Van Winkle Creek	S	Marked	12												12			
	Wishkah River	S	Marked	3									12			15			
W		Marked										18 3			3	24			
Wynoochee River	S	Marked	207 258 267 98 65												895				
	W	Marked										28 107			500	264	64	963	
Chehalis R. System Totals	S	Marked	222 273 294 101 101												991				
	W	Marked	30										72 163			666	491	217	1,639
Copalis R. System *	Copalis River	W	Marked										4			4			
Elk R. System *	Elk River	W	Marked										2			2	4		
Goodman Cr. System *	Goodman Creek (Jefferson Co.)	W	Marked										7 2			9			



**Table 31. 2008-2009 Steelhead Sport Catch, by Area and Month (continued)**

COASTAL RIVERS AND MARINE CATCH AREAS																	
System	Water	Race	Mark	2008									2009			Total	
				Apr	May	Jun	Jul	Aug	Sep	Oct	Nov	Dec	Jan	Feb	Mar		
Hoh R. System *	Hoh River above Hwy 101	S	Marked				4	1	7	1						13	
		W	Marked	3								3	22	26	25	10	89
	Hoh River below Hwy 101	S	Marked				4	8	12	10							34
		W	Marked	1								7	55	28	97	23	211
			Unmarked											3	3	20	31
		Total	1								7	58	31	117	54	268	
	Hoh River, South Fork	W	Marked									4	1	3		8	
	Hoh R. System Totals	S	Marked				8	9	19	11							47
		W	Marked	4								10	81	55	125	33	308
			Unmarked											3	3	20	31
Total			4								10	84	58	145	64	365	
Hoquiam R. System *	Hoquiam River	W	Marked								4				4		
Humptulips R. System *	Humptulips River	S	Marked			115	137	105	3	16						376	
		W	Marked								20	41	64	26	11	162	
	Humptulips River, East Fork	S	Marked			3	3									6	
	Stevens Creek	W	Marked										2			2	
	Humptulips R. System Totals	S	Marked			118	140	105	3	16							382
W		Marked									20	41	66	26	11	164	
Joe Creek System *	Joe Creek	S	Marked			2										2	
Johns R. System *	Johns River	W	Marked								2	20	11			33	
Marine Water	Area 1: Col R - Ledbetter	W	Marked	2								16	2		2	22	
	Area 2-1: Willapa Bay	S	Marked					2								2	
	Marine Water Totals	S	Marked					2									2
		W	Marked	2								16	2		2		22

Table 31. 2008-2009 Steelhead Sport Catch, by Area and Month (continued)

COASTAL RIVERS AND MARINE CATCH AREAS																		
System	Water	Race	Mark	2008									2009			Total		
				Apr	May	Jun	Jul	Aug	Sep	Oct	Nov	Dec	Jan	Feb	Mar			
Marine Water *	Area 2: Westport	W	Marked											4				4
	Area 2-2: Grays Harbor	S	Marked					2										2
	Area 3: La Push	S	Marked							4	2							6
		W	Marked									2						2
	Area 4: Cape Flattery	S	Marked		2	2												4
		W	Marked									4			2			6
Marine Water Totals	S	Marked		2	2			2	4	2							12	
	W	Marked									6	4		2			12	
Naselle R. System	Naselle River	S	Marked				2	5									7	
		W	Marked	2								11		4	16		33	
	Salmon Creek (Pacific Co.)	S	Marked			2				11							13	
		W	Marked									2	7		4	7		20
	Naselle R. System Totals	S	Marked			2	2	5	11								20	
W		Marked	2								2	18		8	23		53	
Nemah R. System	Nemah River	W	Marked									4		2			6	
North R. System	North River	S	Marked							2							2	
		W	Marked											2			2	
	Smith Creek (Pacific Co.)	W	Marked											7	4		11	
	North R. System Totals	S	Marked							2							2	
W		Marked											9	4		13		
Ozette R. System *	Ozette River	S	Marked								2						2	
		W	Marked										9			7	16	
Palix R. System	Niawiakum River	W	Marked												2	2	4	

**Table 31. 2008-2009 Steelhead Sport Catch, by Area and Month (continued)**

COASTAL RIVERS AND MARINE CATCH AREAS																					
System	Water	Race	Mark	2008									2009			Total					
				Apr	May	Jun	Jul	Aug	Sep	Oct	Nov	Dec	Jan	Feb	Mar						
Queets R. System *	Clearwater River	S	Marked				2				2	2				6					
		W	Marked	2											2	4	5	4	18	35	
			Unmarked													2	3	4	9		
			Total	2											2	4	7	7	22	44	
	Queets River	S	Marked					5				2				7					
		W	Marked									31	125	31	26	4	217				
	Salmon River (Jefferson Co.)	S	Marked				5	5								10					
		W	Marked									90	94	79	24	2	289				
			Unmarked													2		2			
	Queets R. System Totals	S	Marked				5	12				2	4				23				
			W	Marked	2											123	223	115	54	24	541
			Unmarked													4	3	4	11		
			Total	2											123	223	119	57	28	552	
Quillayute R. System *	Bogachiel River	S	Marked				9	28	18				9				64				
		W	Marked	5											337	408	97	22	26	895	
			Unmarked													4		9	6	17	36
			Total	9											337	408	106	28	43	931	
	Calawah River	S	Marked				61	89	87	65	30						332				
		W	Marked	9											104	28	15	13	4	173	
			Unmarked													2			4	16	22
			Total	11											104	28	15	17	20	195	
	Dickey River (Clallam Co.)	S	Marked					2								2					
		W	Unmarked															2	2	4	
	Quillayute River	S	Marked				2					6					8				
		W	Marked									35		11	11	5	2	64			
			Unmarked															2		2	
Total														35	11	11	7	2	66		
Sol Duc River	S	Marked			6	41	120	57	18	15						257					
	W	Marked	4											9	15	65	39	39	171		
		Unmarked															7	7	22	36	
		Total	4											9	15	72	46	61	207		

Table 31. 2008-2009 Steelhead Sport Catch, by Area and Month (continued)

COASTAL RIVERS AND MARINE CATCH AREAS																	
System	Water	Race	Mark	2008									2009			Total	
				Apr	May	Jun	Jul	Aug	Sep	Oct	Nov	Dec	Jan	Feb	Mar		
Quillayute R. System *	Quillayute R. System Totals	S	Marked		8	111	237	170	83	54						663	
		W	Marked	18							485	462	188	79	71	1,303	
			Unmarked	6										16	21	57	100
			Total	24								485	462	204	100	128	1,403
Quinault R. System *	Cook Creek	W	Marked									7			7		
	Quinault Lake	S	Marked		4										4		
		W	Marked								2		7	2	11		
	Quinault R, Lower (below L. Quinault, not Cook Cr.)	S	Marked					4	2						6		
		W	Marked								7	2			9		
	Quinault R, Upper (above L. Quinault)	W	Marked											2	9	20	31
			Unmarked												2	5	7
			Total											2	11	25	38
	Quinault R. System Totals	S	Marked		4				4	2						10	
			W	Marked								9	9	9	11	20	58
W		Unmarked												2	5	7	
		Total									9	9	9	13	25	65	
Suez R. System *	Sooes River (Clallam Co.)	W	Marked									4			4		
Waatch River *	Waatch River	W	Marked											2	2		
Willapa R. System	Willapa R, So. Fork	W	Marked									4		2	2	8	
	Willapa River	W	Marked									7	29	4	9	20	69
	Willapa R. System Totals	W	Marked									11	29	6	11	20	77
<b>Coastal Rivers/Streams and Marine Catch Area Totals</b>		S	<b>Marked</b>		<b>14</b>	<b>460</b>	<b>674</b>	<b>591</b>	<b>227</b>	<b>190</b>						<b>2,156</b>	
		W	Marked	58							768	1,063	1,150	830	407	4,276	
			Unmarked	6										23	46	97	175
			<b>Total</b>	<b>64</b>								<b>768</b>	<b>1,066</b>	<b>1,173</b>	<b>876</b>	<b>504</b>	<b>4,451</b>

Table 31. 2008-2009 Steelhead Sport Catch, by Area and Month (continued)

COLUMBIA RIVER AND TRIBUTARIES <sup>1</sup>																	
System	Water	Race	Mark	2008									2009			Total	
				Apr	May	Jun	Jul	Aug	Sep	Oct	Nov	Dec	Jan	Feb	Mar		
Abernathy Cr. System	Abernathy Creek	S	Marked			7	7	2								16	
		W	Marked									2	4	8	20	34	
Coal Cr. System	Coal Creek (Cowlitz Co.)	S	Marked			2		2								4	
		W	Marked											4		4	
Columbia R. Mainstem	Columbia R 01: Buoy 10 to Megler-Astoria Br.	S	Marked					25	2							27	
		W	Marked										4		2	6	
	Columbia R 02: Megler-Astoria Br. to Longview Br.	S	Marked			4	1,337	1,882	479	141	9						3,852
			Unmarked					4									4
			Total			4	1,337	1,886	479	141	9						3,856
	Columbia R 03: Longview Br. to I-5 Br.	W	Marked	15								4	7	2	13	48	89
			S	Marked		4	159	1,015	741	224	18						
	Columbia R 04: I-5 Br. to Bonneville Dam	W	Marked														
			S	Marked			18	712	280	56	9						1,075
	Columbia R 05: Bonneville to The Dalles Dam	S	Marked	7	2	7	347	656	36	18			4	2	4		1,083
			W	Marked	62								7	7		2	42
	Columbia R 06: The Dalles to John Day Dam	S	Marked	13	7	9	99	76	108	20	38	45		63	69	49	596
			W	Marked	7	4	7	22	31	45	128	159	45	36	22	72	578
Columbia R 08: McNary Dam - Hwy 395 Bridge @ Pasco	S	Marked			2	16	54	466	869	526	101	81	97	34	2,246		
		Unmarked											2		2		
		Total			2	16	54	466	869	526	101	81	99	34	2,248		

Table 31. 2008-2009 Steelhead Sport Catch, by Area and Month (continued)

COLUMBIA RIVER AND TRIBUTARIES																
System	Water	Race	Mark	2008									2009			Total
				Apr	May	Jun	Jul	Aug	Sep	Oct	Nov	Dec	Jan	Feb	Mar	
Columbia R. Mainstem (cont.)	Columbia R 09: Hwy 395 Bridge to Priest Rapids Dam	S	Marked	128		4	7	2	16	504	1,315	222	240	114	441	2,993
			Unmarked						2							2
			Total	128		4	7	2	16	506	1,315	222	240	114	441	2,995
	Columbia R 12: Rock Island to Rocky Reach Dam	S	Marked							1						1
	Columbia R 13: Rocky Reach to Wells Dam	S	Marked								370	132	67	31	139	739
	Columbia R 14: Wells to Chief Joseph Dam	S	Marked						2	419	387	193	130	87	125	1,343
	Columbia R. Mainstem Totals	S	Marked	155	21	1,543	4,100	2,344	1,096	1,995	2,795	742	619	424	860	16,694
			Unmarked				4			2				2		8
			Total	155	21	1,543	4,104	2,344	1,096	1,997	2,795	742	619	426	860	16,702
		W	Marked	84								13	18	10	15	107
Cowlitz R. System	Blue Creek (Lewis Co.)	W	Marked									144	74		218	
	Coweeman River	W	Marked								2	14	34	14	9	73
	Cowlitz R. below Mayfield Dam	S	Marked		539	2,723	5,422	2,045	608	491						11,828
		W	Marked	847								283	497	167	212	1,878
	Cowlitz R. between Mayfield & Cowlitz Falls Dams	S	Marked		7	10		2	5							24
		W	Marked	5											5	10
	Cowlitz R. above Cowlitz Falls Dam	S	Marked			2	10	12	2							26
Green River (Cowlitz Co.)	S	Marked			65	168	43	34	7						317	
	W	Marked									21				21	

**Table 31. 2008-2009 Steelhead Sport Catch, by Area and Month (continued)**

COLUMBIA RIVER AND TRIBUTARIES																	
System	Water	Race	Mark	2008									2009			Total	
				Apr	May	Jun	Jul	Aug	Sep	Oct	Nov	Dec	Jan	Feb	Mar		
Cowlitz R. System (cont.)	Lacamas Creek (Lewis Co.)	S	Marked			2	19									21	
	Olequa Creek (Cowlitz Co.)	S	Marked			10	7	2	2							21	
	Toutle River	S	Marked				2	7	7							16	
	Toutle River, No. Fork	S	Marked				2	2	36	14							54
		W	Marked										2				2
	Toutle River, So. Fork	S	Marked			316	177	125	29	41							688
		W	Marked									2	5	2	2	5	16
Cowlitz R. System Totals	S	Marked			546	3,128	5,807	2,238	723	553						12,995	
	W	Marked		852							308	516	205	228	1,897	4,006	
Deep R. System (Wahkiakum)	Deep River (Wahkiakum Co.)	S	Marked		2											2	
Elochoman R. System	Elochoman River	S	Marked			11	18	2	4	11						46	
		W	Marked								62	239	146	77	45	569	
Germany Cr. System	Germany Creek	W	Marked											6	4	10	
Grande Ronde R. System	Grande Ronde River	S	Marked	204			5		40	395	369	178	263	666	1,037	3,157	
Grays R. System	Grays River	S	Marked							2						2	
		W	Marked								4	31	10	10	10	65	
	Grays River, West Fork	S	Marked						5	2							7
		W	Marked									6	18	4			28
	Grays R. System Totals	S	Marked						5	4							9
		W	Marked								4	37	28	14	10		93
Kalama R. System	Kalama River above Kalama Falls Hatchery	S	Marked		2			2		2						6	
		W	Marked	2								2	2	2	12	20	
	Kalama River below Kalama Falls Hatchery	S	Marked		199	800	633	336	147	115							2,230
		W	Marked	96								151	117	158	182	427	1,131
	Kalama R. System Totals	S	Marked		201	800	633	338	147	117							2,236
W		Marked	98								151	119	160	184	439	1,151	

Table 31. 2008-2009 Steelhead Sport Catch, by Area and Month (continued)

COLUMBIA RIVER AND TRIBUTARIES																
System	Water	Race	Mark	2008									2009			Total
				Apr	May	Jun	Jul	Aug	Sep	Oct	Nov	Dec	Jan	Feb	Mar	
Klickitat R. System	Klickitat River	S	Marked		79	327	377	447	315	162						1,707
		W	Marked								62					62
Lewis R. System	Cedar Creek (Clark Co.)	S	Marked						3							3
	Lewis River (below E. Fork)	S	Marked		193	473	212	195	28	11						1,112
		W	Marked	15							15	18	4	2	2	56
	Lewis River, East Fork	S	Marked		52	138	30	25	11	11						267
		W	Marked	2							77	162	127	37	13	418
	Lewis River, North Fork	S	Marked		308	1,131	2,202	1,208	394	201						5,444
		W	Marked	39							107	320	177	57	15	715
Lewis R. System Totals	S	Marked		553	1,742	2,444	1,428	436	223						6,826	
	W	Marked	56							199	500	308	96	30	1,189	
Little White Salmon R. Sys.	Little White Salmon River & Drano Lake	S	Marked	4	4	8	746	1,699	953	89	2	2			3,507	
Methow R. System	Methow River	S	Marked							628	289	40	24	193	448	1,622
Mill Cr. (Lewis Co.)	Mill Cr. (Lewis Co.)	S	Marked			2	2								4	
		W	Marked								2				2	
Mill Cr. System (Cowlitz)	Mill Creek (Cowlitz Co.)	S	Marked			2	5	2							9	
Okanogan R. System	Okanogan River	S	Marked							137	70	24	4	41	275	551
	Similkameen River	S	Marked							2	9	4		2	179	196
	Okanogan R. System Totals	S	Marked							139	79	28	4	43	454	747
Salmon Cr. System (Clark)	Salmon Creek (Clark Co.)	S	Marked				5								5	
		W	Marked								2	22	8	2	4	38



Table 31. 2008-2009 Steelhead Sport Catch, by Area and Month (continued)

COLUMBIA RIVER AND TRIBUTARIES																
System	Water	Race	Mark	2008									2009			Total
				Apr	May	Jun	Jul	Aug	Sep	Oct	Nov	Dec	Jan	Feb	Mar	
Snake R. Mainstem	Snake R 1: below Ice Harbor Dam	S	Marked						58	75	55	55	22	26	2	293
	Snake R 2: Ice Harbor to Lwr Monumental Dam	S	Marked						395	655	573	308	164	75	173	2,343
	Snake R 3: Lower Monumental to Little Goose Dam	S	Marked						1,028	999	561	274	253	265	236	3,616
	Snake R 4: Little Goose to Lower Granite Dam	S	Marked						171	152	303	63	84	120	53	946
	Snake R 5: Lower Granite Dam to Interstate Bridge, Clarkston	S	Marked					7	1,173	939	722	123	125	84	31	3,204
	Snake R 6: upstream of the Interstate Bridge, Clarkston	S	Marked						433	1,216	667	193	173	99		2,781
	Snake R. Mainstem Totals	S	Marked					7	3,258	4,036	2,881	1,016	821	669	495	13,183
Tucannon R. System	Tucannon River	S	Marked	3		5	3	49	193	388	233	68	79	111	38	1,170
Walla Walla R. System	Mill Creek (Walla Walla Co.)	S	Marked					2				2				4
	Touchet River	S	Marked					2	2	4	31	19	6	40	115	219
	Walla Walla River	S	Marked					8	119	210	98	21	13	44	13	526
	Walla Walla R. System Totals	S	Marked					12	121	214	131	40	19	84	128	749

Table 31. 2008-2009 Steelhead Sport Catch, by Area and Month (continued)

COLUMBIA RIVER AND TRIBUTARIES																	
System	Water	Race	Mark	2008									2009			Total	
				Apr	May	Jun	Jul	Aug	Sep	Oct	Nov	Dec	Jan	Feb	Mar		
Washougal R. System	Washougal Hatchery on Washougal Rvr	W	Marked											3	3	6	
	Washougal R, West Fork	S	Marked			15	8	8	6	4							41
		W	Marked									14	6		8		28
	Washougal River	S	Marked		63	225	69	14	25	7							403
		W	Marked	17									58	108	102	17	8
	Washougal R. System Totals	S	Marked		63	240	77	22	31	11							444
W		Marked	17									72	114	113	17	11	344
Wenatchee R. System	Icicle Creek	S	Marked			5										5	
White Salmon R. System	Big White Salmon River	S	Marked		10	2	322	693	375	16						1,418	
		W	Marked	7									31	77	51	12	178
Wind R. System	Wind River above Shipherd Falls	S	Marked		18	13				2						33	
	Wind River below Shipherd Falls	S	Marked	7	2	2	9	303	31	9						363	
	Wind R. System Totals	S	Marked	7	20	15	9	303	33	9						396	
<b>Columbia River and Tributary System Totals (All non-Boldt)</b>		S	Marked	373	1,499	7,839	14,560	9,588	7,730	8,990	6,779	2,114	1,829	2,190	3,460	66,951	
			Unmarked				4			2					2	8	
			<b>Total</b>	<b>373</b>	<b>1,499</b>	<b>7,839</b>	<b>14,564</b>	<b>9,588</b>	<b>7,730</b>	<b>8,992</b>	<b>6,779</b>	<b>2,114</b>	<b>1,829</b>	<b>2,192</b>	<b>3,460</b>	<b>66,959</b>	
		W	Marked	1,114									904	1,790	1,107	663	2,567

**Table 31. 2008-2009 Steelhead Sport Catch, by Area and Month (continued)**

PUGET SOUND AND STRAIT OF JUAN DE FUCA RIVER SYSTEMS AND MARINE CATCH AREAS																						
System	Water	Race	Mark	2008									2009			Total						
				Apr	May	Jun	Jul	Aug	Sep	Oct	Nov	Dec	Jan	Feb	Mar							
Marine Water *	Area 5: W Juan de Fuca	W	Marked											2				2				
	Area 6: E Juan de Fuca	W	Marked											3		6		9				
	Area 7: San Juan Islands	W	Marked												2			2				
	Area 8-1: Skagit Bay-Saratoga Psg.	W	Marked											2	2	2		6				
	Area 8-2: Port Susan-Port Gardner	W	Marked											2				2				
	Area 9: Admiralty Inlet	S	Marked																3			
		W	Marked							3					10	5	6	2	2	28		
	Area 11: Mid-Puget Sound	W	Marked												3				3			
	Area 12: Hood Canal	W	Marked												3				3			
	Area 13: S Puget Sound	W	Marked													2		2	4			
	Marine Water Totals	S	Marked																3			
W		Marked												3				16	16	10	12	2
Clallam R. System *	Clallam River	W	Marked													5		5				
Dungeness R. System *	Dungeness River	W	Marked											3		2	2	7				
Elwha R. System *	Elwha River	W	Marked											10	21	3	3	37				

Table 31. 2008-2009 Steelhead Sport Catch, by Area and Month (continued)

PUGET SOUND AND STRAIT OF JUAN DE FUCA RIVER SYSTEMS AND MARINE CATCH AREAS																
System	Water	Race	Mark	2008									2009			Total
				Apr	May	Jun	Jul	Aug	Sep	Oct	Nov	Dec	Jan	Feb	Mar	
Green-Duwamish R. Sys *	Green (Duwamish River) (King Co.)	S	Marked			71	112	25	19	33						260
			Unmarked				3									3
			Total			71	115	25	19	33						263
		Soos Creek	W	Marked							113	62	21	147		343
		Green-Duwamish R. Sys Totals	S	Marked			74	112	25	19	33					263
	Unmarked						3								3	
	Total					74	115	25	19	33						266
	W			Marked							113	62	21	147		343
	Hoko R. System *	Hoko River	W	Marked								17	27	11	14	3
Lyre R. System *	Lyre River	S	Marked			11	21	32	45							109
		W	Marked							102	99	23	3			227
Morse Cr. System *	Morse Creek (Clallam Co.)	W	Marked											3		3
Nisqually R. System *	Nisqually River	S	Marked					3								3
Nooksack R. System *	Nooksack River, Middle Fork	W	Marked									3				3
	Nooksack River, North Fork	W	Marked									3	11	8		22
	Nooksack River, South Fork	W	Marked										5			5
	Nooksack River, below North Fork	W	Marked									5	3	11		19
	Nooksack R. System Totals	W	Marked									11	19	19		49
Puyallup R. System *	Carbon River	S	Marked						1							1
		W	Marked								2		2	2		6
	Puyallup River	S	Marked			1	3	4								8
		W	Marked								6	3	3	6		18
	Puyallup R. System Totals	S	Marked			1	3	5								9
	W	Marked								8	3	5	8		24	
Pysht R. System *	Pysht River	W	Marked										3	3		6

**Table 31. 2008-2009 Steelhead Sport Catch, by Area and Month (continued)**

PUGET SOUND AND STRAIT OF JUAN DE FUCA RIVER SYSTEMS AND MARINE CATCH AREAS																		
System	Water	Race	Mark	2008									2009			Total		
				Apr	May	Jun	Jul	Aug	Sep	Oct	Nov	Dec	Jan	Feb	Mar			
Salt Cr. System *	Salt Creek (Clallam Co.)	S	Marked			1										1		
Samish R. System *	Samish River	W	Marked												3	2	5	
Sekiu R. System *	Sekiu River	W	Marked												2		2	
Skagit R. System *	Cascade River	S	Marked						1	4							5	
		W	Marked								56	58		5	20		139	
	Sauk River	S	Marked						1	3								4
		W	Marked										3		2		3	8
	Skagit River	S	Marked			3	3	1	9	13								29
		W	Marked									19	63		65	53	5	205
	Skagit R. System Totals	S	Marked			3	3	1	11	20								38
		W	Marked									75	124		72	73	8	352
Snohomish R. System *	Pilchuck River	W	Marked										8	22	10		40	
	Raging River	S	Marked				2										2	
		W	Marked									4	4	10	4		22	
	Skykomish River	S	Marked			359	252	229	44	36							920	
		W	Marked									215	248	199	64		726	
	Skykomish River, No. Fork	S	Marked			4	10	21	8	10							53	
		W	Marked									2	18	6			26	
	Skykomish River, So. Fork	S	Marked			2		10	4	4							20	
		W	Marked									10	4	4	2		20	
	Snohomish River	S	Marked			147	31	4	8	2							192	
		W	Marked									24	34	8	2		68	
	Snoqualmie River	S	Marked			2	19	40	34	17	19						131	
		W	Marked									79	234	171	77		561	
	Sultan River	S	Marked			2				2	2						6	
	Tokul Creek	W	Marked										14	139	48		201	
	Tolt River	W	Marked										4	4	8		16	
Wallace River	S	Marked			11	2		65	25							103		
	W	Marked									68	109	60	10		247		
Snohomish R. System Totals	S	Marked			2	544	337	298	148	98						1,427		
	W	Marked									402	677	623	225		1,927		

Table 31. 2008-2009 Steelhead Sport Catch, by Area and Month (continued)

PUGET SOUND AND STRAIT OF JUAN DE FUCA RIVER SYSTEMS AND MARINE CATCH AREAS																
System	Water	Race	Mark	2008									2009			Total
				Apr	May	Jun	Jul	Aug	Sep	Oct	Nov	Dec	Jan	Feb	Mar	
Stillaguamish R. System *	Canyon Creek	S	Marked					2	2							4
		W	Marked									2		2		4
	Pilchuck Creek (Stillaguamish System)	S	Marked			2	2									4
		W	Marked								2	5				7
	Stillaguamish R, No. Fork	S	Marked			2	9	2	2	20						35
		W	Marked								17	36	7	17		77
	Stillaguamish R, So. Fork	S	Marked					11	4	2						17
		W	Marked								5	7	2	2		16
Stillaguamish River	S	Marked										7		5	12	
	W	Marked														
Stillaguamish R. System Totals	S	Marked			2	11	17	8	22						60	
	W	Marked									24	57	14	21	116	
<b>Puget Sound, Strait of Juan de Fuca River Systems and Marine Catch Area Totals (All are Boldt Case Areas)</b>	S	Marked			2	627	475	368	223	218					1,913	
		Unmarked				3									3	
		<b>Total</b>			<b>2</b>	<b>627</b>	<b>478</b>	<b>368</b>	<b>223</b>	<b>218</b>					<b>1,916</b>	
	W	<b>Marked</b>			<b>3</b>							<b>770</b>	<b>1,097</b>	<b>811</b>	<b>538</b>	<b>15</b>

Table 31. 2008-2009 Steelhead Sport Catch, by Area and Month (continued)

UNKNOWN AREA																	
System	Water	Race	Mark	2008									2009			Total	
				Apr	May	Jun	Jul	Aug	Sep	Oct	Nov	Dec	Jan	Feb	Mar		
<b>Total Unknown</b>	S	Marked			6	38	34	44	28	50					200		
		Unmarked							3	6					9		
		<b>Total</b>			<b>6</b>	<b>38</b>	<b>34</b>	<b>44</b>	<b>31</b>	<b>56</b>					<b>209</b>		
	W	Marked		9								78	51	46	46	46	276
		Unmarked		5													5
		<b>Total</b>		<b>14</b>								<b>78</b>	<b>51</b>	<b>46</b>	<b>46</b>	<b>46</b>	<b>281</b>

**Table 32. 2008-2009 Washington Sport Steelhead Fishing, by Residence**

County of Residence	Number Catch Record Cards	Population by County	% Catch Record Card Holders	Total Steelhead	Average Catch per Card
Adams	1,741	17,257	10.1	683	0.39
Asotin	3,014	21,385	14.1	1,396	0.46
Benton	20,729	164,020	12.6	6,680	0.32
Chelan	8,307	71,308	11.6	1,417	0.17
Clallam	9,966	70,937	14.0	1,432	0.14
Clark	44,398	424,666	10.5	8,977	0.20
Columbia	733	3,970	18.5	559	0.76
Cowlitz	20,730	101,537	20.4	8,548	0.41
Douglas	3,984	36,993	10.8	611	0.15
Ferry	362	7,393	4.9	15	0.04
Franklin	7,707	73,186	10.5	2,101	0.27
Garfield	449	2,117	21.2	298	0.66
Grant	5,775	85,616	6.7	727	0.13
Grays Harbor	11,327	71,447	15.9	1,563	0.14
Island	11,192	80,847	13.8	88	0.01
Jefferson	4,043	29,592	13.7	276	0.07
King	96,167	1,880,000	5.1	7,066	0.07
Kitsap	23,012	239,865	9.6	836	0.04
Kittitas	3,228	39,151	8.2	596	0.18
Klickitat	3,459	20,391	17.0	1,650	0.48
Lewis	12,025	74,362	16.2	3,380	0.28
Lincoln	828	10,322	8.0	36	0.04
Mason	7,525	57,717	13.0	502	0.07
Okanogan	4,618	40,115	11.5	1,287	0.28
Pacific	4,026	21,358	18.9	312	0.08
Pend Oreille	529	12,948	4.1	29	0.05
Pierce	66,611	787,099	8.5	5,633	0.08
San Juan	2,105	15,462	13.6		
Skagit	15,712	118,373	13.3	356	0.02
Skamania	1,575	10,864	14.5	691	0.44
Snohomish	59,831	685,296	8.7	2,995	0.05
Spokane	19,193	462,408	4.2	5,590	0.29
Stevens	1,806	42,183	4.3	378	0.21
Thurston	24,319	245,571	9.9	3,242	0.13
Wahkiakum	1,189	4,058	29.3	567	0.48
Walla Walla	5,756	58,149	9.9	3,278	0.57
Whatcom	17,721	196,960	9.0	429	0.02
Whitman	2,449	42,027	5.8	829	0.34
Yakima	20,619	234,881	8.8	4,463	0.22
Unknown WA	1,634			414	0.25
<b>Washington Total</b>	<b>550,394</b>	<b>6,570,000</b>	<b>8.4</b>	<b>79,930</b>	<b>0.15</b>
<b>Other State Total</b>	50,851			7,356	0.14
<b>Canada</b>	1,750			58	0.03
<b>Other</b>	545			15	0.03
<b>Grand Total</b>	<b>603,540</b>			<b>87,359</b>	<b>0.14</b>

Note: The figures do not accurately multiply across because of the bias adjustment factor and rounding of numbers.

Source: Table 1: Annual Estimates of the Resident Population for Counties of Washington: April 1, 2000 to July 1, 2009 (CO-EST2009-01-53). Source: Population Division, U.S. Census Bureau. Release Date: March, 2010.

Table 33. 2008-2009 Frequency Distribution of Estimated Steelhead Catch Record Cards and Catch

#Steelhead per Catch Record Card	Number of Cards	Cumulative Number of Cards	Percent Cards	Cumulative Percent Cards	Total Catch	Cumulative Total Catch	Percent Catch	Cumulative Percent Catch
0	576,781	576,781	95.57%	95.57%	0	0	0.00%	0.00%
1	11,767	588,548	1.95%	97.52%	11,767	11,767	13.47%	13.47%
2	5,647	594,195	0.94%	98.45%	11,294	23,061	12.93%	26.40%
3	2,428	596,623	0.40%	98.85%	7,284	30,345	8.34%	34.74%
4	1,747	598,370	0.29%	99.14%	6,988	37,333	8.00%	42.74%
5	1,131	599,501	0.19%	99.33%	5,655	42,988	6.47%	49.21%
6	892	600,393	0.15%	99.48%	5,352	48,340	6.13%	55.34%
7	551	600,944	0.09%	99.57%	3,857	52,197	4.42%	59.76%
8	348	601,292	0.06%	99.63%	2,784	54,981	3.19%	62.95%
9	442	601,734	0.07%	99.70%	3,978	58,959	4.55%	67.50%
10	283	602,017	0.05%	99.75%	2,830	61,789	3.24%	70.74%
11	283	602,300	0.05%	99.79%	3,113	64,902	3.56%	74.30%
12	160	602,460	0.03%	99.82%	1,920	66,822	2.20%	76.50%
13	145	602,605	0.02%	99.85%	1,885	68,707	2.16%	78.66%
14	145	602,750	0.02%	99.87%	2,030	70,737	2.32%	80.98%
15	80	602,830	0.01%	99.88%	1,200	71,937	1.37%	82.35%
16	116	602,946	0.02%	99.90%	1,856	73,793	2.12%	84.47%
17	58	603,004	0.01%	99.91%	986	74,779	1.13%	85.60%
18	65	603,069	0.01%	99.92%	1,170	75,949	1.34%	86.94%
19	72	603,141	0.01%	99.93%	1,368	77,317	1.57%	88.51%
20	22	603,163	0.00%	99.94%	440	77,757	0.50%	89.01%
21	65	603,228	0.01%	99.95%	1,365	79,122	1.56%	90.57%
22	65	603,293	0.01%	99.96%	1,430	80,552	1.64%	92.21%
23	29	603,322	0.00%	99.96%	667	81,219	0.76%	92.97%
24	22	603,344	0.00%	99.97%	528	81,747	0.60%	93.57%
25	22	603,366	0.00%	99.97%	550	82,297	0.63%	94.20%
27	14	603,380	0.00%	99.97%	378	82,675	0.43%	94.63%
28	29	603,409	0.00%	99.98%	812	83,487	0.93%	95.56%
29	36	603,445	0.01%	99.98%	1,044	84,531	1.20%	96.76%
30	87	603,532	0.01%	100.00%	2,610	87,141	2.99%	99.75%
31	7	603,539	0.00%	100.00%	217	87,358	0.25%	100.00%
<b>Total</b>	<b>603,539</b>		<b>100.00%</b>		<b>87,358</b>		<b>100.00%</b>	

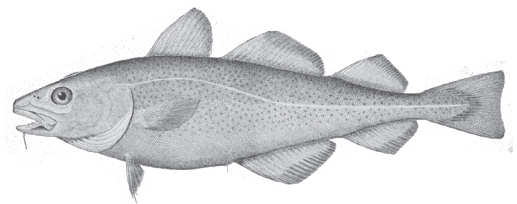
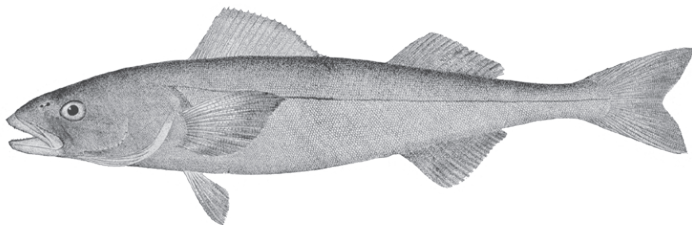
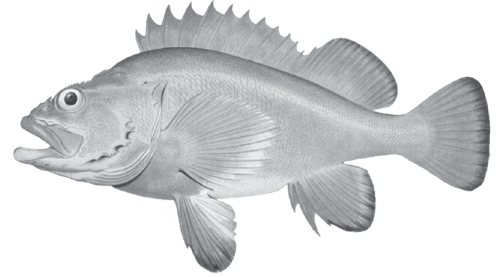
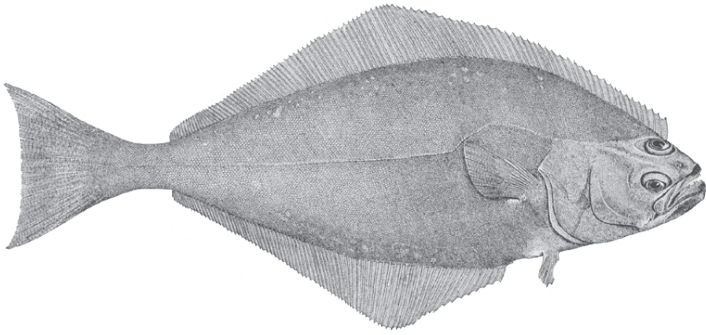


**Table 34. 2008-2009 Sport Steelhead Inventory of Catch Record Cards Received**

Response Type	With Catch		No catch		Total Cards & Letters	Number of Steelhead			Catch per Card		
	Catch Records	Reminder Letters	Catch Records	Reminder Letters		Catch Records	Reminder Letters	Total	Catch Records	Reminder Letters	Total
Prior to reminder	187		4,421		4,608	400		400	0.09		0.09
After reminder postcard	2,290		34,411		36,701	7,645		7,645	0.21		0.21
After 1st reminder letter	466	286	4,731	29,067	34,550	1,335	815	2,150	0.26	0.03	0.06
From license dealer	447		2,845		3,292	1,790		1,790	0.54		0.54
<b>Total</b>	3,390	286	46,408	29,067	79,151	11,170	815	11,985	0.23	0.03	0.15



# Marine Fish



**Table 35. 2008 Coastal Bottomfish Catch**

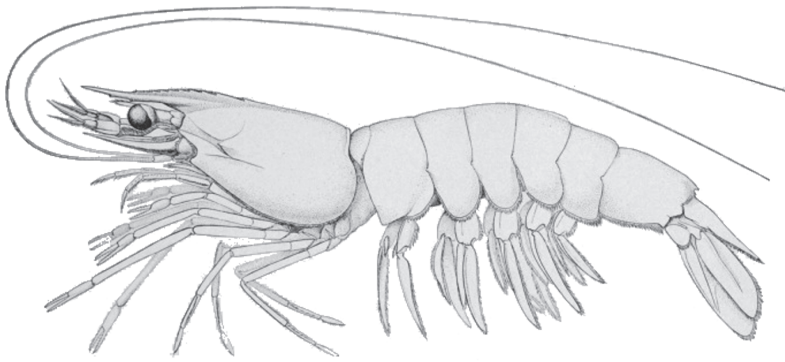
Species	Catch Area					Total
	Area 1 Ilwaco	Area 2 Westport	Area 3 La Push	Area 4 Neah Bay (Ocean)	Area 4B Neah Bay (Strait)	
Black Rockfish	5,360	116,803	9,201	20,192	24,140	175,696
Blue Rockfish	82	146	258	536	584	1,606
Yellowtail Rockfish	157	14,405	1,344	497	766	17,169
China Rockfish	30	157	284	1,713	1,109	3,293
Quillback Rockfish	83	963	93	684	786	2,609
Copper Rockfish	77	168	266	494	778	1,783
Canary Rockfish	2		4	33	40	79
Yelloweye Rockfish			7	27	19	53
Tiger Rockfish	20	26	43	49	77	215
Vermillion Rockfish	19	2	6	192	73	292
Boccaccio		30	66	102	11	209
Other Rockfish	3	131	7		5	146
Lingcod	376	8,517	3,662	3,544	2,701	18,800
Kelp Greenling	217	207	135	818	1,933	3,310
Pacific Cod	34	6	1	17	20	78
Cod (general)	7	4		3	92	106
Cabezon	71	228	142	859	708	2,008
Flatfish	25	148	5	54	151	383
Surf Perch	1,051			3	11	1,065
Sharks and Skates		109	5	4	9	127
Miscellaneous	202	804	21	68	141	1,236

**Table 36. Coastal Washington Recreational Pacific Halibut Catch - 1990-2008**

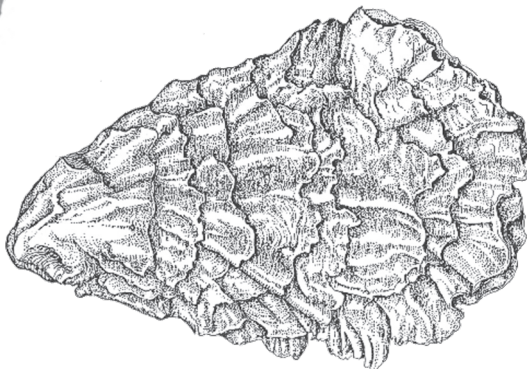
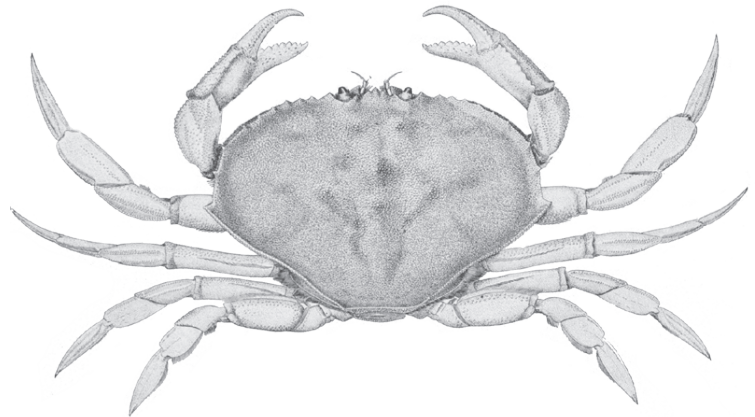
Year	South Coast Catch Areas 1-2	North Coast Catch Areas 3-4
1990	392	4,958
1991	433	4,823
1992	1,740	6,870
1993	539	5,009
1994	651	2,876
1995	884	4,224
1996	877	4,431
1997	1,455	5,996
1998	2,940	6,127
1999	2,126	4,773
2000	2,341	4,286
2001	2,365	5,752
2002	2,129	5,219
2003	2,809	5,576
2004	3,901	5,627
2005	3,049	5,575
2006	3,069	4,600
2007	2,551	5,504
2008	3,045	4,415

Table 37. 2008 Sport Bottomfish Catch by Boat-Based Anglers in Puget Sound

Species	Catch Record Area										Puget Sound Total
	5	6	7	8-1	8-2	9	10	11	12	13	
Pacific Halibut	1,538	2,066	70			235					3,909
Starry Flounder	4	6	62		54	6	118	3		315	568
Soles	75	38	1,097	5	7,568	9,916	5,316	5,960	52	3,809	33,836
Sanddabs	2		82	192	6,833	5,664	6,238	2,160		5,604	26,775
Sablefish											0
Lingcod	95	261	2,605	466	48	641	597	93		311	5,117
Greenlings	286	1,882	6,886	530	4	1,246	92	164		301	11,391
Copper Rockfish	176	283	4,626	231	658	441	306	49		122	6,892
Quillback Rockfish	80	48	1,451	76	159	478	72	14		82	2,460
Brown Rockfish						31	379	59		71	540
Black Rockfish	1,000	327	154	15		44	1	3			1,544
Yellowtail Rockfish	2		50	10							62
Other Rockfishes	48	11	1,459	102	6	24	89	263		232	2,234
Pacific Cod	254	7									261
Walleye Pollock											0
Surfperches			10		109	1,886	54	17		211	2,287
Cabazon	18	39	599			151	21				828
Other Sculpins		6	2,422		30	85	137	58	6	15	2,759
Spiny Dogfish	7		52		79	346	116	553		190	1,343
Misc. Bottomfish					5	6	7	16		49	83
<b>Total</b>	<b>3,585</b>	<b>4,974</b>	<b>21,625</b>	<b>1,627</b>	<b>15,553</b>	<b>21,200</b>	<b>13,543</b>	<b>9,412</b>	<b>58</b>	<b>11,312</b>	<b>102,889</b>



# Shellfish



**Table 38. 2008-2009 Summary of Sport Razor Clam Digging on Ocean Beaches**

<b>Location</b>	<b>Digger Trips</b>	<b>Clams Per Trip</b>	<b>Number of Clams</b>
Long Beach	94,845	10.9	1,031,223
Twin Harbors	41,288	13.7	565,138
Copalis	68,384	14.1	963,497
Mocrocks	44,211	14.8	656,309
Kalaloch	0	0.0	0
<b>Total</b>	<b>248,728</b>	<b>12.9</b>	<b>3,216,167</b>



**Table 39. 2008 Clam and Oyster Recreational Use and Harvest Estimates from Intertidal Areas East of Dungeness Spit**

Marine Areas	Beach Name	User Trips	Pounds of Clams Harvested								Number of Oysters
			Manila	Littleneck	Butter	Cockle	Softshell	Horse	Geoduck	Total	
6	Sequim Bay SP	3,946	269	8,002	673	678	23	758	0	10,403	33,034
7	Spencer Spit SP	762	0	404	1,312	260	0	1,058	0	3,034	0
	N. English Camp	364	14	927	222	263	24	74	0	1,524	0
	Birch Bay SP	6,723	611	12,958	13,827	812	43	2,606	0	30,857	845
	Pt. Whitehorn	556	1	102	766	67	0	2,105	0	3,041	0
	Samish Is Rec Area	1,141	0	894	2,016	92	119	2,518	0	5,639	0
8-1	Madrona	563	0	129	295	1,613	0	42	0	2,079	0
	West Penn Cove	8,173	7	962	40,247	2,437	0	1,422	0	45,075	19,901
	Long Pt	862	0	4	7,324	11	0	401	0	7,740	0
	Ala Spit	214	0	3	1,327	126	7	316	0	1,779	0
	Saratoga Passage	1,142	0	1,170	113	189	67	130	0	1,669	0
	Freeland CP	10	24	1	5	189	67	130	0	416	0
	Winas-Maylor Pt-East	1,299	0	1,496	4,448	663	0	407	0	7,014	0
9	Double Bluffs SP	1,869	0	1,657	4,992	109	0	1,156	0	7,914	0
	Fort Flagler SP	250	3	602	620	37	5	101	27	1,395	18
	Oak Bay CP	1,434	420	527	3,360	401	12	1,519	0	6,239	3,394
	P. T. Ship Canal East	887	89	370	4,501	519	1	593	6	6,079	97
	S Indian Island CP	3,528	4,416	2,198	4,797	229	104	522	471	12,737	318
12	Shine Tidelands SP	2,930	2,224	1,265	7,258	1,582	18	966	436	13,749	3,288
	Wolfe Prop SP	2,547	4,343	564	782	118	55	1,534	0	7,396	12,526
	Dabob Broad Spit	694	1,282	6	0	2	0	22	105	1,417	4,411
	E Dabob	91	205	3	0	1	0	0	0	209	644
	Ouilcene Tidelands	1,988	3,513	0	0	1	4	0	0	3,518	10,888
	S. Zelached Point	175	12	35	126	38	0	230	3	444	2,370
	Toandos Pen SP	497	0	90	1,041	63	2	305	156	1,657	4,214
	Dosewallips SP App.	7,533	11,639	447	275	88	179	0	899	13,527	86,526
	Seal Rock FSC	1,246	0	13	33	30	0	0	155	231	20,435
	Kitsap Memorial SP	1,624	4	614	4,210	1,841	35	1,734	58	8,496	12,578
	Pt. Whitney	4,077	6,712	197	249	15	3	0	0	7,176	33,110
	Pt. Whitney Lagoon	818	1,351	0	0	0	1	0	0	1,352	1,583
	Eagle Creek	658	12	40	80	420	6	19	46	623	10,369
	DNR-44A W Dewatto	594	527	47	49	6	4	0	0	633	9,027
	Scenic Beach SP	315	0	11	35	163	0	19	8	236	4,956
Potlatch West SP-DNR	11,308	2,833	5,868	12,967	13,818	822	209	0	36,517	116,314	

Table 39. 2008 Clam and Oyster Recreational Use and Harvest Estimates from Intertidal Areas East of Dungeness Spit (cont.)

Marine Areas	Beach Name	User Trips	Pounds of Clams Harvested								Number of Oysters
			Manila	Littleneck	Butter	Cockle	Softshell	Horse	Geoduck	Total	
	Cushman Park	3,319	1,694	525	3,076	1,490	9	142	0	6,936	32,673
	Belfair SP	1,096	1,563	1	20	0	57	0	0	1,641	8,768
	Rendsland Creek	544	320	90	733	500	6	21	0	1,670	8,440
	Duckabush	3,594	6,756	236	1,146	568	59	402	127	9,294	29,873
	Triton Cove Tidelands	1,406	1,192	132	365	515	9	0	0	2,213	11,769
	Lilliwaup SP	1,410	198	364	1,384	785	0	155	0	2,886	15,078
	Twanoh SP	2,242	2,878	14	5	8	20	0	0	2,925	23,837
13	Penrose Point SP	2,715	3,005	1,108	813	39	282	1,699	492	7,438	27,806
	North Bay	9,684	20,192	3,285	57	31	232	8	42	23,847	47,425
	Frye Cove CP	490	187	650	4	38	32	142	0	1,053	3,970
	DNR 24	722	378	269	0	4	19	56	0	726	8,333
	McMicken Island SP	429	41	1,010	14	0	10	86	0	1,161	0
	Hope Island SP	625	7	206	3,866	0	21	414	1,132	5,646	905
	Oakland Bay Ogg	1,017	1,903	3	21	0	0	0	0	1,927	6,017
<b>Total</b>		<b>100,111</b>	<b>80,825</b>	<b>49,499</b>	<b>129,454</b>	<b>30,859</b>	<b>2,357</b>	<b>24,021</b>	<b>4,163</b>	<b>321,178</b>	<b>615,740</b>

**Table 40. 2008 Hood Canal Sport Shrimp Fishery**

Area	Date	Pots Fished	Pounds	CPUE (lbs. per pot)
12	May - June (8 days)	21,906	84,154	3.84
<b>Total</b>		<b>21,906</b>	<b>84,154</b>	<b>3.84</b>

**Table 41. 2008 Puget Sound Sport Spot Shrimp Fishery**

Area	Date	Pots Fished	Pounds	CPUE (lbs. per pot)
4, 5, & 6	May - Sept	n/a	2,009	
7	May	3,230	11,815	3.66
8-1 & 8-2	May - June	2,321	10,989	4.73
9	May	1,059	4,050	3.82
10	May - June	1,332	5,208	3.91
11	May	453	1,447	3.19
13	May	n/a	200	
<b>Total</b>		<b>8,395</b>	<b>35,718</b>	<b>3.86</b>

**Table 42. 2008-2009 Sport Dungeness Crab Catch (all gear types)**

Marine Area and location		Summer Season (lb. of crab)	Fall/Winter Season (lb. of crab)
<b>4</b>	Neah Bay		
<b>5</b>	Seki/Pillar Point		
	Total	29,360	2,190
<b>6</b>	Port Angeles Harbor, Dungeness & Sequim Bays, Discovery Bay		
	Total	41,880	22,056
<b>7</b>	Gulf of Georgia, North of San Juan Islands, Bellingham Bay, Samish Bay, San Juan Islands, Anacortes		
	Total	427,468	37,389
<b>8-1</b>	Skagit Bay, North Saratoga Passage, Holmes Harbor		
	Total	244,378	50
<b>8-2</b>	South Saratoga Passage		
	Port Susan		
	Port Gardner		
	Total	260,032	40
<b>9<sup>1</sup></b>	Admiralty Inlet, Port Townsend Bay, Useless Bay		
	Total	50,429	12,050
<b>10</b>	Seattle/Kingston, Port Orchard		
	Total	35,945	14,996
<b>11</b>	Colvos Pass, East Pass		
	Total	43,786	101
<b>13</b>	South Puget Sound		
	Total	33,006	16,900
<b>12, 9<sup>2</sup></b>	Port Ludlow/Port Gamble, Upper Hood Canal, Central Hood Canal, Lower Hood Canal		
	Total	53,182	24,186
<b>Total</b>		<b>1,219,466</b>	<b>129,958</b>

<sup>1</sup> Excluding all waters of Marine Area 9 south of a line from Foulweather Bluff to Olele Point.

<sup>2</sup> Including all waters of Marine Area 9 south of a line from Foulweather Bluff to Olele Point.



This program receives Federal financial assistance from the U.S. Fish and Wildlife Service Title VI of the Civil Rights Act of 1964, Section 504 of the Rehabilitation Act of 1973, Title II of the Americans with Disabilities Act of 1990, the Age Discrimination Act of 1975, and Title IX of the Education Amendments of 1972. The U.S. Department of the Interior and its bureaus prohibit discrimination on the bases of race, color, national origin, age, disability and sex (in educational programs). If you believe that you have been discriminated against in any program, activity or facility, please write to:

U.S. Fish and Wildlife Service  
Civil Rights Coordinator for Public Access  
4401 N. Fairfax Drive, Mail Stop: WSFR-4020  
Arlington, VA 22203