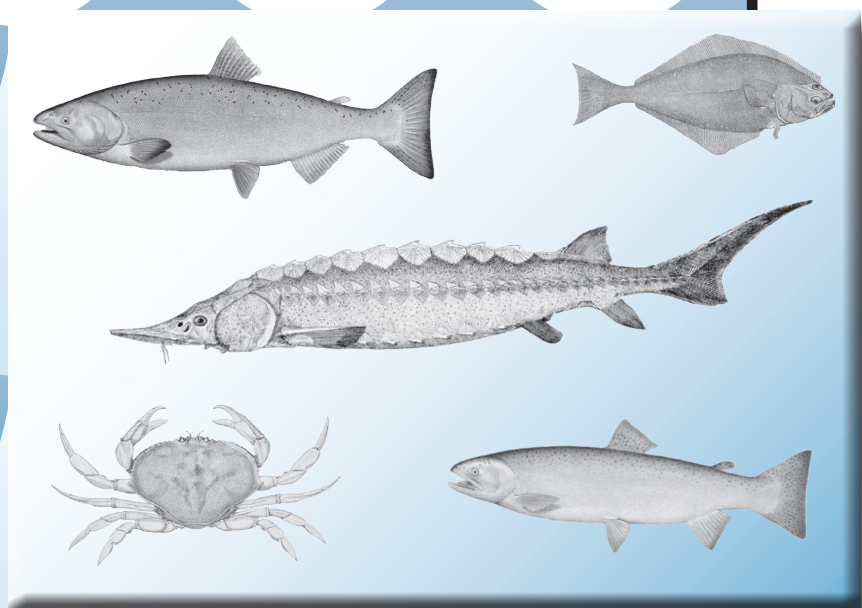


Washington State Sport Catch Report 2010



by Eric Kraig



*Washington Department of
Fish and Wildlife
Fish Program
Science Division*

WASHINGTON STATE SPORT CATCH REPORT 2010

by

Eric Kraig

State of Washington
Jay Inslee, Governor

Washington State Department of Fish and Wildlife
Phillip Anderson, Director

Fish Program
Jim Scott, Assistant Director

Department of Fish and Wildlife
Fish Science Division
600 Capitol Way N
Olympia, Washington 98501



August 2014



ACKNOWLEDGEMENTS

Many Department of Fish and Wildlife biologists and program staff contributed to the compilation and editing of this report. Thanks go to the staff in Licensing, Information Systems, Support Services Unit, and Fish Management. Special thanks are due to Dan Ayres, Mark Baltzell, Wendy Beeghley, Lynette Bounds, David Bramwell, Joe Hymer, Olaf Langness, Bob Leland, Glen Mendel, Mark O'Toole, Maria Parnel, Euna Parse, Steve Thiesfeld, Camille Speck, and Karla Weiss.

TABLE OF CONTENTS

List of Tables	iii
Introduction	1
Sport Licenses	5
Technical Data	7
Salmon	11
Map of Salmon Catch Record Card Areas	12
Description of Salmon Catch Record Card Areas	13
Sturgeon	49
Map of Sturgeon Catch Record Card Areas	50
Description of Sturgeon Catch Record Card Areas	51
Steelhead	57
Marine Fish	81
Shellfish	85

LIST OF TABLES

SPORT LICENSES

Table 1.	Number and Value of Sport Fishing Licenses Sold in Washington in the 2010-2011 Fishing Year.....	6
----------	--	---

TECHNICAL DATA

Table 2.	Number of Catch Record Cards Issued 1971-2010	8
Table 3.	2010-2011 Catch Record Card Technical Data.....	9

SALMON

Table 4.	Annual Sport Salmon Catch, 1971 – 2010	14
Table 5.	2010-2011 Total Sport Salmon Catch	15
Table 6.	2010-2011 Sport Salmon Marine Catch, Area 1 – Ilwaco: Ocean	16
Table 7.	2010-2011 Sport Salmon Marine Catch, Area 1 – Ilwaco: River	17
Table 8.	2010-2011 Sport Salmon Marine Catch, Area 2 – Westport.....	18
Table 9.	2010-2011 Sport Salmon Marine Catch, Area 2-1 – Willapa Bay	18
Table 10.	2010-2011 Sport Salmon Marine Catch, Area 2-2 – Grays Harbor	19
Table 11.	2010-2011 Sport Salmon Marine Catch, Area 3 – LaPush	19
Table 12.	2010-2011 Sport Salmon Marine Catch, Area 4 – Neah Bay	20
Table 13.	2010-2011 Sport Salmon Marine Catch, Area 5 – Sekiu – Pillar Point	21
Table 14.	2010-2011 Sport Salmon Marine Catch, Area 6 – East Juan de Fuca Strait	21
Table 15.	2010-2011 Sport Salmon Marine Catch, Area 7 – San Juan Islands	22
Table 16.	2010-2011 Sport Salmon Marine Catch, Area 8-1 – Deception Pass / Hope Island	22
Table 17.	2010-2011 Sport Salmon Marine Catch, Area 8-2 – Port Susan / Port Gardner	23
Table 18.	2010-2011 Sport Salmon Marine Catch, Area 9 – Admiralty Inlet	23
Table 19.	2010-2011 Sport Salmon Marine Catch, Area 10 – Seattle / Bremerton	24
Table 20.	2010-2011 Sport Salmon Marine Catch, Area 11 – Tacoma / Vashon Island.....	24
Table 21.	2010-2011 Sport Salmon Marine Catch, Area 12 – Hood Canal	25
Table 22.	2010-2011 Sport Salmon Marine Catch, Area 13 – South Puget Sound	25
Table 23.	2010-2011 Sport Freshwater Catch, By Area and Month	26
Table 24.	2010-2011 Washington Sport Salmon Fishing, By Residence	46
Table 25.	2010-2011 Frequency Distribution of Salmon Cards and Catch	47
Table 26.	2010-2011 Inventory of Salmon Catch Record Cards Received.....	48

LIST OF TABLES

STURGEON

Table 27.	2010-2011 Sport Sturgeon Catch.....	52
Table 28.	2010-2011 Sport Sturgeon Fishing, By Residence	55
Table 29.	2010-2011 Frequency Distribution of Sturgeon Cards and Catch	56
Table 30.	2010-2011 Inventory of Sturgeon Catch Record Cards.....	56

STEELHEAD

Table 31.	2010-2011 Sport Steelhead Catch.....	58
Table 32.	2010-2011 Sport Steelhead Fishing, By Residence	78
Table 33.	2010-2011 Frequency Distribution of Steelhead Cards and Catch	79
Table 34.	2010-2011 Inventory of Steelhead Catch Record Cards Received	80

MARINE FISH

Table 35.	2010 Coastal Sport Bottomfish Catch.....	82
Table 36.	2010 Washington Recreational Pacific Halibut Catch.....	83
Table 37.	2010 Sport Bottomfish Catch by Boat-Based Anglers in Puget Sound	84

SHELLFISH

Table 38.	2010-2011 Seasonal Summary of Sport Razor Clam Digging on Ocean Beaches	86
Table 39.	2010 Clam and Oyster Recreational Use and Harvest Estimates from Intertidal Areas East of Dungeness Spit	87
Table 40.	2010 Hood Canal Sport Shrimp Fishery	88
Table 41.	2010 Puget Sound Sport Shrimp Fishery.....	88
Table 42.	2010-2011 Sport Dungeness Crab Catch.....	89

INTRODUCTION

The Washington State Sport Catch Report was first published in 1967. The report originally provided salmon catch estimates, which were and still are based on data from catch record cards (punch cards). In 1975, marine fish sport harvest estimates were added to the report, followed by shellfish estimates in 1976. Marine fish and intertidal shellfish sport harvest estimates are based on field and creel surveys. In 1994, with the merger of the departments of Fisheries and Wildlife, steelhead sport harvest estimates were added to the report. Now, catch record card data are collected for salmon, sturgeon, steelhead, Dungeness crab and halibut. The card data is supplemented with field or creel survey data or telephone surveys where available to improve recreational harvest estimate accuracy. The sport harvest estimates for salmon, steelhead, sturgeon, marine fish and shellfish are produced at varying times of each year. For this reason, coupled with an increase in the number of catch record cards issued, budget, and staffing constraints, the 2010 edition of the Washington State Sport Catch Report is being published in August 2014.

The 2010 sport estimates reflect harvest from April 1, 2010, through March 31, 2011. Historically, salmon, sturgeon, halibut, marine fish and shellfish estimates were made on a calendar year basis from January 1 through December 31. Steelhead estimates were summarized from May 1 through the next April 30 to better capture the results of steelhead “run years”. Effective January 1, 1999, the sport license system adopted an April 1 to March 31 license year for all species. To adjust to the new reporting time frames, the 1999 sport report included 15 months of salmon and sturgeon catch and 11 months of steelhead catch (May 1, 1999 – March 31, 2000). When comparing past years’ sport harvest estimate tables, please note the changes in the license structure and reporting year as described above.

SPORT LICENSES AND CATCH RECORD CARDS

In 2010, the following licenses and catch record cards were required to fish in Washington:

- Saltwater license: Required for saltwater fishing, for all anglers aged sixteen and over. Available for residents, resident seniors (70 and older), and non-residents. Catch record cards required for salmon, steelhead, sturgeon and halibut, for anglers of all ages.
- Freshwater license: Required for freshwater fishing, for all anglers aged sixteen and over. Available for residents, resident seniors (70 and older), and non-residents. Catch record cards required for salmon, steelhead and sturgeon, for anglers of all ages.
- Shellfish/seaweed license: Required for harvesters aged sixteen and over. Available for residents, resident seniors (70 and older), and non-residents. Allows the holder to harvest clams, mussels, oysters, shrimp, crab, squid, other shellfish, and seaweed. In addition, a Puget Sound crab endorsement and catch record card was required to harvest Dungeness crab in Marine Areas 5-13.
- Combination license: Allows anglers to fish in both saltwater and freshwater and to harvest shellfish and seaweed. Available for both residents and non-residents aged fifteen and over.

Fish catch record cards were required for salmon, steelhead, sturgeon and halibut. Each species group could be issued as a separate card, or included together on one card. Separate catch record cards were required for recording Dungeness crab in Puget Sound. Separate crab cards were required for the summer and fall/winter seasons.

In 2001 WDFW implemented the Washington Interactive Licensing Data (WILD) system to electronically capture recreational license issuance information at the point of sale. The catch record card remained the same paper document distributed by sport license vendors, but demographic data about persons receiving the cards became available almost immediately.

Table 1 lists license sales for the license year which ran from April 1, 2010 through March 31, 2011. Table 2 provides counts for the numbers of fish and crab catch cards issued going back to 1971. Table 3 shows the return rate, expansion factor, and non-response bias correction factors for the 2010-11 cards.

METHODS

Catch record card returns are used to estimate sport salmon catch in marine and freshwater areas. For some areas, the catch cards numbers are replaced with estimates based on creel surveys. In marine areas, creel estimates were used in Areas 1-4 (not including Willapa bay or Grays Harbor), and for many of the Puget Sound fisheries including the summer months in Area 5, 9, 10 and 11, and winter blackmouth fisheries in Area 7, 8-1, 8-2, 9, 10, and 11.

The sport catch record card is used to produce the annual sport harvest estimates for salmon, steelhead, sturgeon, and halibut. Anglers holding in-sample cards are sent reminders to return their CRC's. Harvest summed from returned in-sample cards is expanded to account for the un-sampled cards (75%) and unreturned cards. A bias adjustment factor is applied in some areas and species to account for successful anglers returning cards at a higher rate than unsuccessful anglers. Creel survey data are substituted for CRC data when available. The preliminary sport harvest estimates are sent to WDFW and Tribal biologists statewide for review. After review comments are compiled and investigated, final sport harvest estimates are prepared and distributed.

The methods used produce estimates of sport harvest, which have some level of uncertainty. This uncertainty, or variance, is estimated and expressed with confidence levels, which are not provided in this report. These variance estimates are available upon request.

OCEAN CATCH DATA

Sport catch data from coastal areas 1 – 4 were reported using “port sampling” (creel survey) catch estimates. Such estimates were derived by monitoring daily landings at four coastal ports: Ilwaco, Westport, La Push, and Neah Bay. Catch is reported in the area where the fish was caught and not the area where it was landed.

STATISTICAL MONTHS AND STATISTICAL WEEKS

Some catch data (i.e. salmon and bottomfish) are reported using statistical months or statistical weeks. Statistical weeks (defined as Monday-Sunday) are consecutively numbered weeks beginning on January 1 and continuing through week 53 or 54, ending on December 31. The first and last weeks of any year usually contain less than 7 days. Statistical months are made up of a set number of statistical weeks, which approximate calendar months but do not coincide with calendar month start and end dates. For example, in 2010, the statistical month of January begins January 1 and ends February 1 and the statistical month of February starts on February 2 and ends March 24. Due to the differences between calendar and statistical months, some catch may be reported during what appears to be a closed period.

SALMON

Annual sport salmon catch estimates for 1971 through 2010 are shown in Table 4. Between April 1, 2010, and March 31, 2011 a total of 335,931 salmon were caught in marine areas, and 204,196 salmon were caught in freshwater. The marine totals by species, as shown in Table 5, are: 66,284 chinook; 58,626 coho; 2,644 chum; 27 pink; 128 sockeye; and 145 jacks (all species combined). Freshwater species breakdowns are: 104,464 chinook; 59,471 coho; 10,376 chum; 2 pink; 22,114 sockeye; 11,650 jacks (all species combined).

Catch record card returns are used to estimate sport salmon catch in marine and freshwater areas. For some areas, the catch cards numbers are replaced with estimates based on creel surveys. In marine areas, creel estimates were used in Areas 1-4 (not including Willapa bay or Grays Harbor), and for many of the Puget Sound fisheries including the summer months in Area 5, 9, 10 and 11, and winter blackmouth fisheries in Area 7, 8-1, 8-2, 9, 10, and 11.

STURGEON

On the new combined sport catch record card, sturgeon fishers were required to record their catch statewide. The total sport harvest for 2010, based on creel surveys and catch record card returns, was 7,820 fish. Of this total, 7,057 white sturgeon came from the Columbia River and Snake River systems combined (Table 30). Catch from coastal rivers (including Willapa Bay and Grays Harbor) totaled 349 white sturgeon. Puget Sound rivers and marine areas produced 290 white sturgeon. For monthly catch information see Table 27.

STEELHEAD

Harvest estimates for sport-caught summer and winter steelhead are based on catch record card returns. Steelhead caught during the months of May through October are considered “summer-runs,” designated S. Steelhead caught from November through April are considered “winter-runs,” designated W, with the exception of steelhead caught above Bonneville Dam on the Columbia River, where all steelhead are considered “summer-runs,” because of run and spawn timing.

Table 31 presents steelhead sport harvest estimates for the 2010-2011 season geographically by stream and river system. Monthly estimate totals are given for marked and unmarked steelhead.

MARINE FISH

Marine fish are those species of fish which live their entire lives in salt water. There are four general groups of marine fish for management purposes: 1) bottomfish, which are species such as rockfish, lingcod and most species of sole and flounder; 2) forage fish, which are small, schooling fish such as herring and smelt; 3) tunas and mackerels; 4) Pacific halibut.

The recreational catch of bottomfish and halibut in ocean waters (Catch Areas 1-4) is estimated from marine surveys (Table 35 and 36). The estimates are made for each of the four main coastal fishing areas: Ilwaco, Westport, La Push and Neah Bay.

The Puget Sound (Catch Areas 5-13) catch of bottomfish, excluding halibut, is estimated using a combination of two surveys: a creel survey of anglers to determine the catch rate and species composition and a phone survey of licensed anglers to determine total fishing effort. These estimates are shown in Table 37. The recreational catch of forage fish is not routinely monitored and no harvest estimate is available.

SHELLFISH

Razor clam harvest on the coastal beaches is summarized in Table 38. During the fall of 2010 and the spring of 2011 244,428 digging trips resulted in a harvest of 3,158,886 clams, for an average of 12.9 clams per trip.

Puget Sound recreational clam and oyster harvest estimates are shown in Table 39. Harvest totals for Manila and native littleneck clams, butter clams, cockles, softshell clams, horse clams, geoducks and oysters are shown for public access beaches. Estimates show 107,769 sport harvester trips gathered 365,335 total pounds of clams and 773,347 oysters in 2010 on the monitored beaches.

The Hood Canal sport shrimp fishery harvest is reported in Table 40. A total of 83,381 pounds of shrimp were caught during the seven days of the season. Puget Sound shrimpers caught 40,184 pounds of shrimp between May and September. The sport crab fishery in the Puget Sound areas is summarized in Table 42. Crabbers harvested an estimated 1,854,860 pounds of Dungeness crab.

SPORT LICENSES

Table 1. Number and Value of Sport Fishing Licenses Sold in Washington.

April 1, 2010 - March 31, 2011 - License Year				
Type of License	Price	Number Sold	Value	
Saltwater				
Resident	\$22.20	49,779	\$1,148,055.00	
Non-Resident	\$45.80	3,058	\$140,078.40	
Senior	\$8.60	16,140	\$104,950.45	
Freshwater				
Resident	\$24.00	366,476	\$8,982,989.50	
Non-Resident	\$50.00	18,615	\$1,002,237.00	
Senior	\$8.00	37,654	\$222,252.00	
Shellfish/Seaweed				
Resident	\$12.00	97,624	\$1,195,375.30	
Non-Resident	\$29.60	6,112	\$172,201.20	
Senior	\$11.60	16,024	\$151,964.00	
Combination (Saltwater/Freshwater/Shellfish)				
Resident	\$48.20	144,471	\$6,785,318.10	
Non-Resident	\$91.40	2,349	\$219,820.45	
Disabled	\$11.00	13,001	\$115,123.50	
Youth	\$11.00	13,525	\$120,285.75	
Under 15	\$0.00	76,184	\$0.00	
Short-term Combination*				
1-day Resident	\$10.18	46,246	\$401,392.74	
1-day Non-Resident	\$17.82	31,384	\$525,041.88	
2-day Resident	\$13.46	11,800	\$145,159.73	
2-day Non-Resident	\$24.36	11,672	\$280,052.96	
3-day Resident	\$16.73	10,386	\$163,079.67	
3-day Non-Resident	\$30.91	11,194	\$348,934.38	
4-day Resident	\$18.91	642	\$10,856.22	
4-day Non-Resident	\$35.27	1,564	\$52,034.28	
5-day Resident	\$21.09	810	\$15,462.90	
5-day Non-Resident	\$39.64	3,172	\$119,394.08	
Razor Clam				
Annual Resident	\$11.00	22,839	\$223,611.00	
Annual Non-resident	\$17.60	2,231	\$37,206.10	
3-day	\$7.40	30,180	\$190,141.20	
PS Crab Endorsement				
Annual	\$3.00	167,261	\$418,100.00	
Under 15	\$0.00	35,141	\$0.00	
1-5 day	\$1.00	10,289	\$5,144.50	
Charter/Guide Stamps*				
Charter Stamps	\$6.82	24,355	\$166,101.10	
Guide - Resident	\$6.82	2,085	\$14,219.70	
Guide - Non-resident	\$13.18	500	\$6,590.00	
Two-Rod Endorsements				
Resident / Non-resident	\$24.50	13,292	\$316,304.00	
Senior	\$6.50	3,002	\$18,012.00	
Columbia River Endorsements				
Resident / Non-resident	\$8.75	205,861	\$1,698,353.00	
Duplicate Catch Cards				
Resident		13,480	\$134,800.00	
Non-Resident		1,027	\$10,270.00	
Youth		1,254	\$12,540.00	
Senior		693	\$6,930.00	
Disabled		350	\$3,500.00	
Duplicate Licenses				
Resident		12,673	\$88,697.00	
Non-Resident		571	\$3,997.00	
Youth		269	\$1,889.00	
Senior		894	\$5,084.00	
Disabled		307	\$2,149.00	
Total			\$25,785,698.09	

TECHNICAL DATA

Table 2. Number of Catch Record Cards Issued 1971-2010

Year	Salmon	Steelhead	Sturgeon
1971	541,600	145,647	
1972	536,750	153,977	
1973	568,825	165,671	
1974	562,375	154,051	
1975	576,075	no data	
1976	660,150	no data	
1977	641,050	no data	
1978	580,375	130,000	
1979	487,875	136,000	
1980	433,700	139,500	
1981	463,561	132,000	
1982	481,915	100,000	
1983	481,025	101,800	
1984	364,286	133,400	
1985	403,523	121,500	
1986	431,898	100,500	
1987	475,459	102,000	
1988	486,356	108,182	33,195
1989	509,534	106,666	35,576
1990	497,215	98,362	32,421
1991	489,394	98,328	32,396
1992	419,986	98,933	37,615
1993	447,986	94,913	43,067
1994	244,629	87,093	54,837
1995	416,707	101,303	62,572
1996	333,773	92,858	69,639
1997	331,511	68,341	76,806
1998	265,296	85,636	79,264
1999-2000	352,003	183,520	132,503
	Combined	Crab - Summer	Crab - Winter
2000-2001*	539,898		
2001-2002	827,443		
2002-2003	767,465		
2003-2004	799,326		
2004-2005	715,395		
2005-2006	686,831		
2006-2007	672,753		
2007-2008**	640,893	210,327	157,712
2008-2009	603,539	210,893	207,143
2009-2010	729,319	236,665	89,259
2010-2011	574,969	208,458	70,731

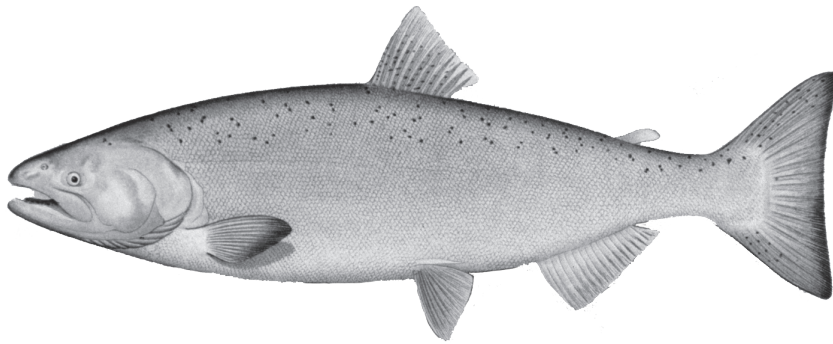
*Starting with the 2000-2001 season, all species were combined on a single card.

**Starting with the 2007-2008 season, separate cards were issued for Dungeness Crab, for both the summer season and the fall/winter season.

Table 3. 2010-2011 Catch Record Card Technical Data.

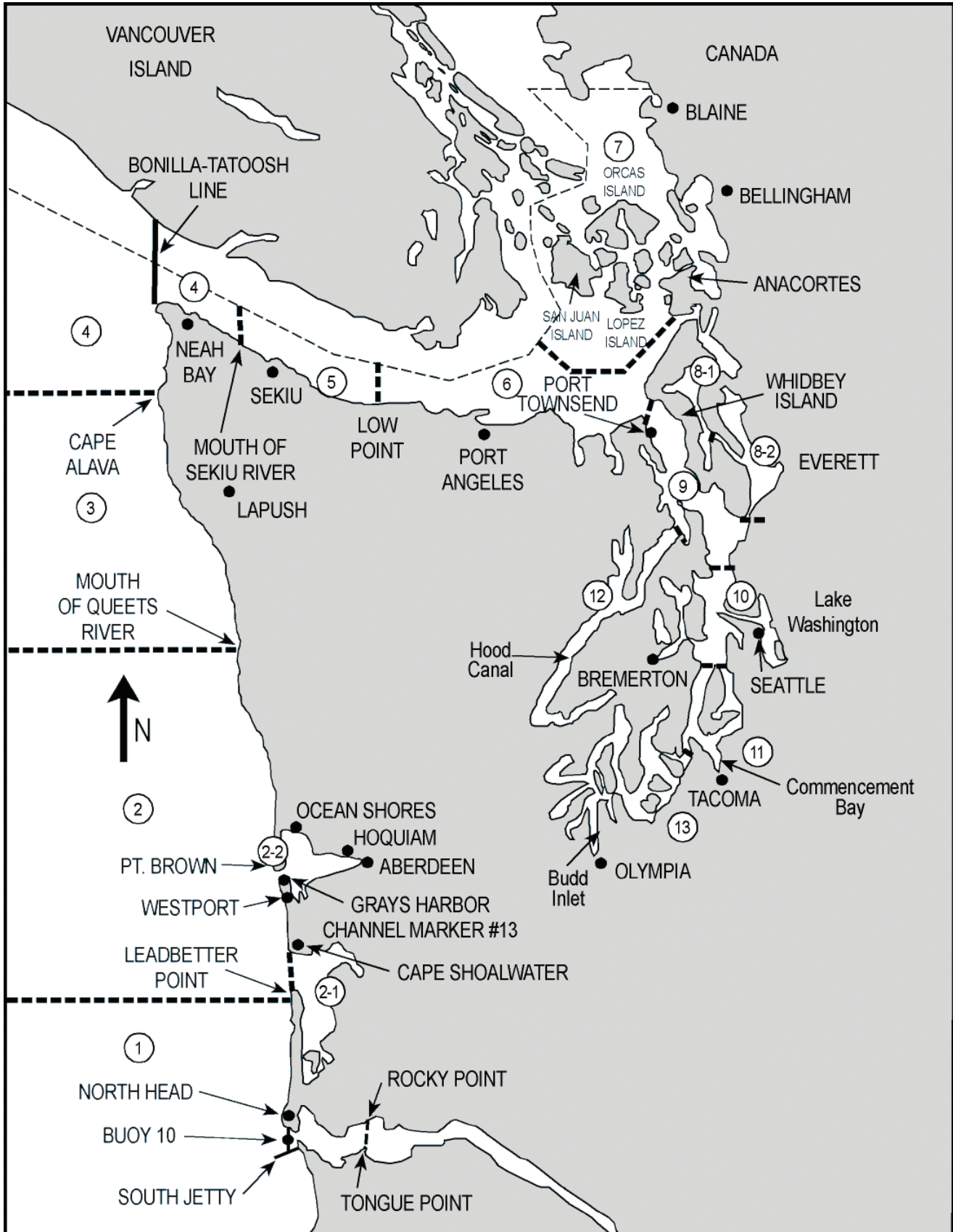
Cards Issued	574,969
In-sample cards	143,742
In-sample cards returned	78,937
Expansion Factor (Cards Issued / In-sample Returns)	7.28
Non-reporting bias correction factors	
Salmon - Marine Area 5	1.00
Salmon - Puget Sound Marine Areas	1.46
Salmon - Freshwater, Grays Harbor, Willapa Bay	1.20
Steelhead	0.98
Sturgeon	1.00

Salmon



MAP OF SALMON CATCH RECORD CARD AREAS

MARINE WATERS ONLY



1	ILWACO	West of the Buoy 10 line at the Columbia River mouth, north to Leadbetter Point.
2	WESTPORT-OCEAN SHORES	From Leadbetter Point north to the Queets River, excluding Willapa Bay and Grays Harbor.
2-1	WILLAPA BAY	East of a line from Leadbetter Point to Cape Shoalwater.
2-2	GRAYS HARBOR	East of a line from the tip of the North Jetty to exposed end of the South Jetty.
3	LA PUSH	From the Queets River north to Cape Alava.
4	NEAH BAY	From Cape Alava north and inside Juan de Fuca Strait to the Sekiu River.
5	SEKIU AND PILLAR POINT	From mouth of the Sekiu River east to Low Point, mouth of the Lyre River.
6	EAST JUAN DE FUCA STRAIT	From Low Point east to the Partridge Point - Point Wilson line north to the line from Trial Island (near Victoria B.C.) - Vessel Traffic Separation Buoy "R" - Smith Island to the Lawson Reef Buoy to Northwest Island to the Initiative 77 marker on Fidalgo Island.
7	SAN JUAN ISLANDS	All marine waters north of the Trial Island line described under Area 6 to the United States-Canada boundary.
8-1	DECEPTION PASS, SKAGIT BAY	From West Point to Reservation Head eastward through Deception Pass, including all waters of Swinomish Slough and Skagit Bay, and the portion of Saratoga Passage north and west of a line from East Point Light to light on Camano Island (Saratoga Pass Light #4FI Red 4 Sec.).
8-2	PORTS SUSAN AND GARDNER	East of East Point Light-Camano Island Light line (described in 8-1 above) and north of the Possession Point-Shipwreck line (described in 9 below).
9	ADMIRALTY INLET	All waters inside and south of the Partridge Point - Point Wilson line, south and west of a line from Possession Point 110° true to shipwreck, north of the Hood Canal Bridge, and north of the Apple Cove Point-Edwards Point line.
10	SEATTLE-BREMERTON AREA	South from the Apple Cove Point-Edwards Point line to a line projected true east- west through the north tip of Vashon Island.
11	TACOMA-VASHON ISLAND	South from a line projected true east west through the north tip of Vashon Island to the Tacoma Narrows Bridge.
12	HOOD CANAL	All waters south of the Hood Canal Bridge.
13	SOUTH PUGET SOUND	All waters south of Tacoma Narrows Bridge.

FRESHWATER AREAS

RIVERS OR STREAMS OR LAKES - Name of river, stream or lake, except for Buoy 10

BUOY 10 (1A)

From Buoy 10 Line to Rocky Point-Tongue Point Line

Table 4. Annual Sport Salmon Catch

Year	Total	Fresh-water	Un-known	Area 1	Area 1A	Area 2	Area 2-1	Area 2-2	Area 3	Area 4	Area 5	Area 6	Area 7	Area 8	Area 8-1	Area 8-2	Area 9	Area 10	Area 11	Area 12	Area 13
1971	1,344,818	145,904		342,928		446,738			39,682	87,184	71,947	39,573	28,355	5,189			54,920	35,225	27,332	19,841	
1972	1,138,926	121,432		307,938		353,113			31,278	61,704	45,446	45,058	29,536	3,097			42,968	32,942	35,962	28,452	
1973	1,095,360	147,554		236,385		348,406			49,900	48,645	33,347	40,308	14,852	3,966			52,935	42,574	61,919	14,569	
1974	1,320,420	88,048		334,664		320,467			74,832	80,362	50,319	53,222	36,318	5,491			76,518	69,341	105,110	25,728	
1975	1,399,375	101,531		308,475		331,565			57,356	59,451	48,975	74,336	37,626	7,726			100,089	78,832	162,072	31,341	
1976	1,749,560	100,601		433,026		543,295			70,133	68,670	63,966	102,639	55,396	21,688			88,737	62,607	61,562	24,405	52,835
1977	1,191,414	96,843		248,518		321,888			38,359	86,186	73,106	61,568	31,709	17,792			64,651	39,372	44,657	22,020	44,745
1978	1,107,852	86,845		220,548		269,338			24,439	52,270	59,400	68,849	36,293	13,229			73,187	56,479	48,018	26,801	72,156
1979	1,123,809	88,659		167,478		174,365			24,160	53,840	134,354	70,839	48,101	33,835			104,619	71,167	71,495	20,006	60,891
1980	852,879	105,461		158,883		163,748			19,146	29,500	39,587	52,663	24,457	18,432			60,072	52,128	57,751	17,138	53,913
1981	760,104	58,128		142,879		151,301			1,734	36,883	55,900	56,318	21,826	16,986			67,838	42,602	42,175	14,989	50,545
1982	749,995	91,849		102,769	13,069	158,005			9,857	42,716	67,611	33,870	12,947	9,940			49,853	49,727	51,975	8,672	47,135
1983	860,623	108,783		95,593	3,006	100,791			7,318	58,469	62,486	74,311	29,844	23,268			98,485	54,228	72,772	11,756	59,513
1984	561,428	142,170		23,927	55,865	16,631			167	6,604	39,276	67,246	29,985	17,442			79,526	24,130	28,781	5,158	24,520
1985	686,333	107,734		75,013	18,914	93,620			2,062	26,878	101,920	45,342	23,798	25,427			75,193	33,019	38,157	4,897	14,359
1986	830,644	115,469		69,915	86,360	98,421			2,553	25,027	138,951	71,544	27,550	26,822			79,730	33,686	33,891	3,460	17,265
1987	782,834	110,636		62,393	61,048	71,458			3,005	29,418	107,138	82,377	27,152	31,421			86,270	42,179	32,753	8,947	26,639
1988	703,088	168,594		22,960	120,019	62,001			3,341	19,576	107,935	47,483	22,225	16,514			47,109	28,020	22,202	2,420	12,689
1989	832,214	121,417		87,755	67,734	100,000			2,405	44,600	164,580	64,766	19,078	23,165			63,724	36,748	24,561	4,588	7,093
1990	824,143	107,934		97,844	16,850	102,984			5,809	48,329	223,012	54,848	12,797	14,865			57,875	47,519	25,555	1,618	6,304
1991	943,473	153,719		77,608	152,974	107,362	1,965	9,047	5,615	43,357	216,816	42,812	16,602		3,528	16,809	40,390	32,229	15,549	3,225	3,866
1992	569,195	90,032		48,356	37,157	67,427	1,978	0	2,031	25,820	108,876	30,894	12,515		3,295	11,836	47,157	51,338	18,198	6,303	5,982
1993	599,361	145,579		49,587	17,975	57,990	2,260	743	3,469	31,154	80,496	44,174	35,697		6,150	18,170	41,949	36,699	14,130	3,540	9,599
1994	156,896	61,142			1,069	71	2,574	1,971	Closed	Closed	518	1,184	8,322		1,917	3,301	6,978	23,279	25,360	8,905	10,305
1995	524,232	190,158		3,743	24,954	29,122	936	1,799	1,990	15,604	53,553	20,617	23,801		23,503	42,900	22,920	28,560	28,242	5,200	6,630
1996	390,660	161,108		17,882	3,509	23,089	2,422	2,601	1,901	8,750	41,820	18,103	15,486		2,350	13,968	20,343	18,972	25,417	6,408	6,531
1997	394,868	98,220		11,976	22,441	16,261	409	1,433	1,260	2,577	52,890	23,614	35,016		5,894	37,649	24,356	25,277	23,146	7,089	5,360
1998	235,466	78,664		4,738	5,364	9,348	1,329	2,970	762	8,045	24,509	6,657	5,801		2,095	12,409	24,324	16,674	17,272	7,782	6,723
1999	239,317	92,611		21,989	11,222	19,056	2,137	1,207	4,387	6,650	24,546	3,509	5,765		1,519	8,805	9,228	4,009	14,517	4,046	4,114
2000	401,180	191,805	4,228	27,889	16,335	34,636	870	2,736	2,519	11,652	29,883	4,334	7,178		2,105	12,798	12,608	15,681	14,212	4,580	5,131
2001	1,056,395	405,590	11,042	82,641	80,701	85,645	1,255	5,784	4,188	21,991	87,639	12,081	17,268		17,685	74,947	70,259	26,448	27,761	17,677	5,793
2002	551,479	306,424	6,443	53,015		61,715	960	3,530	3,736	13,523	35,100	1,418	8,326		1,544	8,609	12,731	11,885	12,044	7,039	3,437
2003	810,616	342,884	6,940	83,164		64,733	1,953	2,135	6,537	32,207	88,885	13,781	12,409		10,573	51,784	44,697	16,541	17,719	10,898	2,776
2004	474,929	214,116	2,562	59,321		38,616	1,759	6,017	5,152	34,760	45,000	2,511	3,428		1,117	7,606	15,024	13,766	13,944	7,293	2,937
2005	451,411	200,535	1,789	38,490		32,823	3,580	1,910	4,316	15,297	58,621	3,295	5,934		1,691	18,846	24,125	12,866	15,022	8,392	3,879
2006	288,716	174,224	1,212	21,254		14,506	3,368	1,812	3,754	7,136	13,244	1,601	4,486		378	2,280	6,398	11,193	12,024	6,214	3,632
2007	545,737	231,800	2,501	49,108		28,694	1,473	1,635	3,545	16,057	75,084	6,626	9,961		1,513	21,604	41,906	20,149	22,602	6,955	4,524
2008	251,975	160,431	1,491	11,729		16,983	2,788	1,001	1,356	3,415	14,765	1,437	3,651		580	1,303	6,982	8,007	9,598	3,124	3,334
2009	1,074,938	571,230	16,885	69,430		60,414	5,975	5,257	10,437	69,692	73,767	16,056	10,173		6,207	32,774	63,436	30,738	26,325	4,081	2,061
2010	335,931	204,196	3,881	24,191		39,821	1,893	2,122	2,196	6,934	19,540	3,014	4,543		234	961	7,786	6,369	4,621	2,415	1,214

Note: In 1976, several area boundary lines were changed resulting in thirteen catch areas instead of twelve. The changes were mostly reflected in catch Areas 8, 9, 10 and new Area 13. In 1989, catch Area 8 was subdivided into Areas 8.1 and 8.2 and catch Area 2 was subdivided into Areas 2, 2-1 and 2-2. For comparative purposes, the catch for Areas 8-1 and 8-2 are totaled and entered under Area 8 until 1990. Beginning in 1991, Areas 8-1 and 8-2, are reported separately. Similarly, the catch in Areas 2, 2-1 and 2-2 are included in the total catch for Area 2 until 1990. Beginning in 1991, they are reported separately. The total catch for Area 1 and Area 1A is included in the total catch for Area 1 until 1981. Starting in 1982, they are reported separately. Beginning in 2002, Area 1A catch is included in the freshwater total.

Note: Prior to 1999, sport salmon estimates were based on calendar years. In 1999, the sport estimates cover January 1, 1999 - March 31, 2000. Starting in 2000, sport salmon estimates are based on the fishing license year which runs from April 1 to March 31.

Table 5. Total 2010-2011 Sport Salmon Catch

Marine Area	Chinook	Coho	Chum	Pink	Sockeye	Jacks	Total Salmon	Marine Angler Trips	Salmon per Trip
Ilwaco-Ocean (Area 1)	5,404	18,787					24,191	27,138	0.89
Westport (Area 2)	27,153	12,668					39,821	38,558	1.03
Willapa Bay (Area 2.1)	1,643	189				61	1,893	N/A	
Grays Harbor (Area 2.2)	158	1,880				84	2,122	N/A	
LaPush (Area 3)	1,033	1,163					2,196	3,751	0.59
Neah Bay (Area 4)	3,285	3,649					6,934	11,472	0.60
Subtotal Coast*	38,676	38,336		0		145	77,157	80,919	0.90
Sekiu-Pillar Point (Area 5)	6,418	12,959	140	13	10		19,540	36,713	0.53
East Juan de Fuca (Area 6)	2,337	663	3	10	1		3,014	14,282	0.21
San Juan Islands (Area 7)	3,789	623	10	4	117		4,543	33,962	0.13
Deception Pass, Hope Island (Area 8-1)	125	109					234	3,167	0.07
Port Susan & Port Gardner (Area 8-2)	353	592	16				961	26,419	0.04
Admiralty Inlet (Area 9)	5,505	2,169	112				7,786	63,207	0.12
Seattle-Bremerton (Area 10)	3,383	2,429	557				6,369	32,157	0.20
Tacoma-Vashon Island (Area 11)	4,274	326	21				4,621	57,783	0.08
Hood Canal (Area 12)	746	329	1,340				2,415	11,301	0.21
South Puget Sound (Area 13)	678	91	445				1,214	28,586	0.04
Subtotal Puget Sound	27,608	20,290	2,644	27	128		50,697	307,577	0.16
Marine Area Totals*	66,284	58,626	2,644	27	128	145	127,854	388,496	0.33
Freshwater Totals	104,464	59,471	10,376	2	22,114	11,650	208,077	N/A	
Grand Totals	170,748	118,097	13,020	29	22,242	11,795	335,931	N/A	

*Salmon per trip is calculated after subtracting the catch totals for Willapa Bay and Grays Harbor, where angler trip data is not available.

Table 6. 2010-2011 Sport Salmon Catch, Area 1 - Ilwaco: Ocean

Week Ending	Year	Chinook	Coho	Pink	Sockeye	Chum	Total Salmon	Marine Angler Trips	Salmon per Trip
June 13	2010	11					11	69	0.15
June 20	2010	40					40	174	0.23
June 27	2010	54	1				55	304	0.18
July 4	2010	146	1303				1,449	1,051	1.38
July 11	2010	219	1325				1,544	1,313	1.18
July 18	2010	253	898				1,151	1,130	1.02
July 25	2010	479	1168				1,647	1,335	1.23
August 1	2010	388	1736				2,125	2,354	0.90
August 8	2010	631	2465				3,096	3,601	0.86
August 15	2010	983	2576				3,559	3,998	0.89
August 22	2010	1,396	3824				5,219	5,620	0.93
August 29	2010	578	2860				3,438	4,131	0.83
September 5	2010	151	512				663	1,318	0.50
September 12	2010	73	89				162	589	0.27
September 19	2010	2	28				30	139	0.22
September 26	2010		2				2	12	0.19
October 3	2010								
October 10	2010								
Total		5,404	18,787				24,191	27,138	0.89

NOTE: Catch by species is presented by actual catch area and therefore may not correspond with catch by quota area statistics reported prior to 1995.

Table 7. 2010 - 2011 Sport Salmon Catch, Area 1 - Ilwaco: River (Buoy 10)

Week Ending	Year	Chinook	Coho	Pink	Sockeye	Chum	Total Salmon	Angler Trips	Salmon per Trip
August 1	2010	1					1	207	0.00
August 8	2010	31	3				34	1,099	0.03
August 15	2010	121	46				167	2,297	0.07
August 22	2010	1,073	1,002				2,075	6,994	0.30
August 29	2010	846	1,232				2,078	6,864	0.30
September 5	2010	185	458				643	3,024	0.21
September 12	2010		23				23	630	0.04
September 19	2010		4				4	101	0.04
September 26	2010		5				5	92	0.05
October 3	2010		6				6	41	0.15
Total **		2,257	2,779				5,036	21,349	0.24

NOTE: Catch by species is presented by actual catch area and therefore may not correspond with catch by quota area statistics reported prior to 1995.

** Includes some catch just above the Megler-Astoria Bridge.

Table 8. 2010-2011 Sport Salmon Catch, Area 2 - Westport

Week Ending	Year	Chinook	Coho	Pink	Sockeye	Chum	Total Salmon	Marine Angler Trips	Salmon per Trip
June 13	2010	547	4				551	1,299	0.42
June 20	2010	2,024	29				2,053	2,647	0.78
June 27	2010	1,719	13				1,731	3,029	0.57
July 4	2010	762	216				978	1,474	0.66
July 11	2010	1,166	758				1,924	2,139	0.90
July 18	2010	1,127	314				1,440	1,689	0.85
July 25	2010	3,501	1,423				4,923	3,510	1.40
August 1	2010	3,897	983				4,881	3,944	1.24
August 8	2010	5,084	1,414				6,497	4,891	1.33
August 15	2010	3,258	659				3,916	3,961	0.99
August 22	2010	1,658	404				2,062	2,947	0.70
August 29	2010	664	1,512				2,176	2,076	1.05
September 5	2010	638	1,123				1,761	1,361	1.29
September 12	2010	728	2,236				2,964	1,860	1.59
September 19	2010	380	1,583				1,963	1,731	1.13
September 26	2010								
October 3	2010								
October 10	2010								
Total		27,153	12,668				39,821	38,558	1.03

NOTE: Catch by species is presented by actual catch area and therefore may not correspond with catch by quota area statistics reported prior to 1995.

Table 9. 2010-2011 Sport Salmon Catch, Area 2.1 - Willapa Bay

Statistical Month	Year	Chinook	Coho	Pink	Sockeye	Chum	Chinook Jacks	Coho Jacks	Total Salmon
July	2010	38							38
August	2010	850	37				31		918
September	2010	692	102				18	12	824
October	2010	63	50						113
Total		1,643	189				49	12	1,893

Table 10. 2010-2011 Sport Salmon Catch, Area 2.2 - Grays Harbor

Statistical Month	Year	Chinook	Coho	Pink	Sockeye	Chum	Chinook Jacks	Coho Jacks	Total Salmon
August	2010	56	44						100
September	2010	49	529					18	596
October	2010	53	1,330					30	1,413
November	2010		13						13
Total		158	1,916					48	2,122

Table 11. 2010-2011 Sport Salmon Catch, Area 3 - La Push

Week Ending	Year	Chinook	Coho	Pink	Sockeye	Chum	Total Salmon	Marine Angler Trips	Salmon per Trip
June 13	2010	14					14	74	0.19
June 20	2010	6					6	191	0.03
June 27	2010	6					6	107	0.06
July 4	2010	21	73				94	139	0.68
July 11	2010	54	70				124	175	0.71
July 18	2010	9	56				65	121	0.54
July 25	2010	12					12	109	0.11
August 1	2010	147	28				175	289	0.61
August 8	2010	276	61				336	468	0.72
August 15	2010	139	194				333	511	0.65
August 22	2010	111	277				388	543	0.71
August 29	2010	107	145				252	356	0.71
September 5	2010	13	27				40	122	0.33
September 12	2010	50	127				176	254	0.69
September 19	2010	24	69				93	137	0.68
September 26	2010								
October 3	2010	42	35				77	151	0.51
October 10	2010	3	2				5	3	1.50
Total		1,033	1,163				2,196	3,751	0.59

NOTE: Catch by species is presented by actual catch area and therefore may not correspond with catch by quota area statistics reported prior to 1995.

Table 12. 2010-2011 Sport Salmon Catch, Area 4 - Neah Bay

Week Ending	Year	Chinook	Coho	Pink	Sockeye	Chum	Total Salmon	Marine Angler Trips	Salmon per Trip
June 13	2010	26					26	181	0.14
June 20	2010	84					84	636	0.13
June 27	2010	29	1				30	301	0.10
July 4	2010	109	133				242	562	0.43
July 11	2010	205	303				509	1,266	0.40
July 18	2010	197	269				466	1,003	0.46
July 25	2010	165	137				302	1,014	0.30
August 1	2010	891	1,059				1,949	1,926	1.01
August 8	2010	349	503				853	1,046	0.82
August 15	2010	600	337				937	1,035	0.90
August 22	2010	405	635				1,040	1,121	0.93
August 29	2010	94	134				228	590	0.39
September 5	2010	87	96				184	498	0.37
September 12	2010	37	23				60	184	0.33
September 19	2010	5	19				23	106	0.22
September 26	2010								
October 3	2010								
October 10	2010								
Total		3,285	3,649				6,934	11,472	0.60

NOTE: Catch by species is presented by actual catch area and therefore may not correspond with catch by quota area statistics reported prior to 1995.

Table 13. 2010-2011 Sport Salmon Catch, Area 5 - Sekiu - Pillar Point

Statistical Month	Year	Chinook	Coho	Pink	Sockeye	Chum	Total Salmon	Marine Angler Trips	Salmon per Trip
April	2010	38					38	76	0.50
July	2010	3,448	245	8			3,701	11,598	0.32
August	2010	2,464	934	5	10		3,413	8,401	0.41
September	2010	219	11,780			140	12,139	15,659	0.78
November	2010	15					15	112	0.13
February	2011	53					53	247	0.21
March	2011	181					181	620	0.29
Total		6,418	12,959	13	10	140	19,540	36,713	0.53

NOTE: Estimates for July-September are from creel surveys; all other estimates are from catch record cards.

Table 14. 2010-2011 Sport Salmon Catch, Area 6 - East Juan de Fuca Strait

Statistical Month	Year	Chinook	Coho	Pink	Sockeye	Chum	Total Salmon	Marine Angler Trips	Salmon per Trip
April	2010	109					109	491	0.22
July	2010	892			1		893	3,170	0.28
August	2010	511	67				578	2,409	0.24
September	2010	10	145	10			165	3,914	0.04
October	2010	114	451			3	568	2,225	0.26
February	2011	273					273	820	0.33
March	2011	428					428	1,253	0.34
Total		2,337	663	10	1	3	3,014	14,282	0.21

Table 15. 2010-2011 Sport Salmon Catch, Area 7 - San Juan Islands

Statistical Month	Year	Chinook	Coho	Pink	Sockeye	Chum	Total Salmon	Marine Angler Trips	Salmon per Trip
April	2010	221					221	1,213	0.18
May	2010	5					5	32	0.16
July	2010	984	8	4			996	9,765	0.10
August	2010	358	43		69		470	5,304	0.09
September	2010	311	80		48		439	5,936	0.07
October	2010	24	492			10	526	3,118	0.17
December	2010	708					708	2,191	0.32
January	2011	569					569	2,359	0.24
February	2011	270					270	1,354	0.20
March	2011	339					339	2,690	0.13
Total		3,789	623	4	117	10	4,543	33,962	0.13

NOTE: Estimates for April and December-March are from creel surveys; all other estimates are from catch record cards.

Table 16. 2010-2011 Sport Salmon Catch, Area 8-1 - Deception Pass / Hope Island

Statistical Month	Year	Chinook	Coho	Pink	Sockeye	Chum	Total Salmon	Marine Angler Trips	Salmon per Trip
April	2010	47					47	525	0.09
August	2010		52				52	342	0.15
September	2010	10	47				57	355	0.16
October	2010		10				10	49	0.20
November	2010	24					24	677	0.04
December	2010	28					28	311	0.09
January	2011	12					12	244	0.05
February	2011	4					4	472	0.01
March	2011						0	192	0.00
Total		125	109				234	3,167	0.07

NOTE: Estimates for April, November-March are from creel surveys; all other estimates are from catch record cards.

Table 17. 2010-2011 Sport Salmon Catch, Area 8-2 - Port Susan / Port Gardner

Statistical Month	Year	Chinook	Coho	Pink	Sockeye	Chum	Total Salmon	Marine Angler Trips	Salmon per Trip
April	2010	101					101	813	0.12
June	2010	26					26	1,916	0.01
July	2010	87					87	3,187	0.03
August	2010	69	45				114	7,728	0.01
September	2010	6	454			5	465	8,220	0.06
October	2010		93			11	104	1,811	0.06
November	2010	12					12	803	0.01
December	2010						0	313	0.00
January	2011	22					22	391	0.06
February	2011	17					17	768	0.02
March	2011	13					13	469	0.03
Total		353	592			16	961	26,419	0.04

NOTE: Estimates for April, November-March are from creel surveys; all other estimates are from catch record cards.

Table 18. 2010-2011 Sport Salmon Catch, Area 9 - Admiralty Inlet

Statistical Month	Year	Chinook	Coho	Pink	Sockeye	Chum	Total Salmon	Marine Angler Trips	Salmon per Trip
April	2010	75					75	403	0.19
May	2010	5					5	17	0.29
June	2010	5	5				10	35	0.29
July	2010	3,143	48				3,191	15,846	0.20
August	2010	1,864	288				2,152	14,697	0.15
September	2010	24	1,451				1,475	19,118	0.08
October	2010	36	377			102	515	9,335	0.06
November	2010	70				10	80	990	0.08
December	2010	5					5	50	0.10
January	2011	126					126	893	0.14
February	2011	106					106	910	0.12
March	2011	46					46	913	0.05
Total		5,505	2,169			112	7,786	63,207	0.12

NOTE: Estimates for part of April, July-August and November-March are from creel surveys; all other estimates are from catch record cards.

Table 19. 2010-2011 Sport Salmon Catch, Area 10 - Seattle / Bremerton

Statistical Month	Year	Chinook	Coho	Pink	Sockeye	Chum	Total Salmon	Marine Angler Trips	Salmon per Trip
April	2010	11	5				16	151	0.11
July	2010	1,219	227			7	1,453	12,765	0.11
August	2010	1,897	707				2,604	12,290	0.21
September	2010	73	1,251			8	1,332	5,768	0.23
October	2010	45	229			439	713	N/A	N/A
November	2010	11	10			103	124	N/A	N/A
December	2010	25					25	620	0.04
January	2011	102					102	563	0.18
Total		3,383	2,429			557	6,369	32,157	0.20

NOTE: Estimates for parts of July-August, December-January are from creel surveys; all other estimates are from catch record cards.

Table 20. 2010-2011 Sport Salmon Catch, Area 11 -Tacoma / Vashon Island

Statistical Month	Year	Chinook	Coho	Pink	Sockeye	Chum	Total Salmon	Marine Angler Trips	Salmon per Trip
April	2010	162					162	986	0.16
June	2010	1,105	7				1,112	7,818	0.14
July	2010	860	23				883	17,180	0.05
August	2010	1,837	156				1,993	20,765	0.10
September	2010	171	122			14	307	8,601	0.04
October	2010	10	18			7	35	579	0.06
November	2010	57					57	750	0.08
December	2010	10					10	258	0.04
February	2011	31					31	253	0.12
March	2011	31					31	593	0.05
Total		4,274	326			21	4,621	57,783	0.08

NOTE: Estimates for April-September are from creel surveys; all other estimates are from catch record cards.

Table 21. 2010-2011 Sport Salmon Catch, Area 12 - Hood Canal

Statistical Month	Year	Chinook	Coho	Pink	Sockeye	Chum	Total Salmon	Marine Angler Trips	Salmon per Trip
April	2010	47					47	475	0.10
July	2010	82	5				87	1,221	0.07
August	2010	197	36				233	4,105	0.06
September	2010	75	240			5	320	1,710	0.19
October	2010		48			556	604	1,215	0.50
November	2010					779	779	651	1.20
December	2010	46					46	651	0.07
February	2011	124					124	406	0.31
March	2011	175					175	867	0.20
Total		746	329			1,340	2,415	11,301	0.21

Table 22. 2010-2011 Sport Salmon Catch, Area 13 - South Puget Sound

Statistical Month	Year	Chinook	Coho	Pink	Sockeye	Chum	Total Salmon	Marine Angler Trips	Salmon per Trip
April	2010	5					5	147	0.03
May	2010	41					41	703	0.06
June	2010	78					78	7,838	0.01
July	2010	57	5				62	4,014	0.02
August	2010	393					393	9,806	0.04
September	2010	104	10			16	130	3,102	0.04
October	2010		76			321	397	2,560	0.16
November	2010					108	108	416	0.26
Total		678	91			445	1,214	28,586	0.04

Table 23. 2010-2011 Freshwater Salmon Sport Catch by Area and Month (continued)

COASTAL RIVER SYSTEMS																	
System	Stream	CRC Code	Species	2010								2011			Total		
				Apr	May	Jun	Jul	Aug	Sep	Oct	Nov	Dec	Jan	Feb		Mar	
Grays Harbor	Elk River	342	Coho							24	6					30	
			Total							24	6					30	
	Hoquiam River	355	Coho							6						6	
			Jackcoho							6						6	
			Total							12						12	
	Humptulips River	358	Chinook							90	1,617	286	12				2,005
			Coho							116	2,957	698	305	55			4,131
			Jackchin							54							54
			Jackcoho							6	102	30		6			144
	Total							212	4,730	1,014	317	61			6,334		
Wishkah River	335	Coho							6						6		
		Total							6						6		
Chehalis R. System	Chehalis River	315	Chinook							1						1	
			Coho							683	3,054	579	172	6			4,494
			Jackchin							2	1	1					4
			Jackcoho							339	321	18	18	6			702
			Total							1,024	3,377	598	190	12			5,201
	Cloquallum Creek	321	Chum										1				1
			Total										1				1
	Quigg Lake	370	Coho										6	18			24
			Total										6	18			24
	Satsop River	329	Chinook										1				1
Coho										508	526	381	42			1,457	
Jackcoho									1	66	12	6				85	
Total									1	574	539	387	42			1,543	
Skookumchuck River	333	Coho							74	86	61	55	6			282	
		Jackcoho									24	18	12			54	
		Total							74	110	79	67	6			336	

Table 23. 2010-2011 Freshwater Salmon Sport Catch by Area and Month (continued)

COASTAL RIVER SYSTEMS																
System	Stream	CRC Code	Species	2010									2011			Total
				Apr	May	Jun	Jul	Aug	Sep	Oct	Nov	Dec	Jan	Feb	Mar	
Copalis R. System	Copalis River	339	Coho					13	102	299	13					
			Jackchin					6								
			Jackcoho							27	80	7				
			Total					19	129	379	20					
Hoh R. System	Hoh River	348	Chinook		6			22	18	259						
			Coho					7		458	36					
			Jackchin				6	24	6							
			Jackcoho					12								
			Total		6		6	65	24	717	36					
Joe Creek System	Joe Creek	323	Coho							95	6					
			Total							95	6					
Moclips R. System	Moclips River	371	Coho				1									
			Total				1									
Queets R. System	Clearwater River	392	Chinook							19	31					
			Coho							137	162					
			Jackchin							6						
			Jackcoho									6				
			Total							162	199					
	Queets River	394	Chinook							44						
			Coho					6	93	286	62					
			Jackcoho						31							
			Total					6	124	330	62					
			Salmon River (Jefferson Co)	396	Chinook							6	44	25		
Chum										12						
Coho									90	102	26					
Jackchin									6							
Total									102	158	51					

Table 23. 2010-2011 Freshwater Salmon Sport Catch by Area and Month (continued)

COASTAL RIVER SYSTEMS																	
System	Stream	CRC Code	Species	2010								2011			Total		
				Apr	May	Jun	Jul	Aug	Sep	Oct	Nov	Dec	Jan	Feb		Mar	
Quillayute R. System	Bogachiel River	398	Chinook						12	141	30					183	
			Coho						6	324	233	6				569	
			Sockeye								6						6
			Jackchin								30	6					36
			Jackcoho								30	6					36
			Total						18	531	275	6					830
	Calawah River	400	Chinook	6						12		6					24
			Coho								24	24					48
			Jackcoho						6								6
			Total	6					18	24	30						78
	Dickey River (Clallam Co)	402	Coho								6						6
			Total								6						6
	Quillayute River	404	Chinook		6					18	61						85
			Coho				12	12	49	583	12						668
			Jackchin								12						12
			Jackcoho					6			36						42
			Total		6		18	12	67	692	12						807
	Sol Duc River	406	Chinook	42	73	82	12	12	12	231	24					12	500
			Coho				12	18	61	1,918	577						2,586
			Sockeye			94	109	42	6								251
			Jackchin		6	6	6				67	6					91
Jackcoho						6		30	182	42						260	
Total			42	79	182	145	72	109	2,398	649					12	3,688	
Quinault R. System	Cook Creek	408	Chinook						13							13	
			Total						13							13	
	Quinault River	410	Chinook							6						6	
			Coho								38					38	
									44						44		

Table 23. 2010-2011 Freshwater Salmon Sport Catch by Area and Month (continued)

COASTAL RIVER SYSTEMS																	
System	Stream	CRC Code	Species	2010									2011			Total	
				Apr	May	Jun	Jul	Aug	Sep	Oct	Nov	Dec	Jan	Feb	Mar		
Sooes R. System	Sooes River (Clallam Co.)	418	Coho						6								
			Total						6								
Van Winkle Creek	Van Winkle Creek	419	Coho						16	107	16	5					
			Total						16	107	16	5					
Willapa Bay	Naselle River	375	Chinook					56	379	435	19						
			Coho						46	463	627	764	124				
			Jackchin						31	25	6						
			Jackcoho						6	25	18	12					
			Total					56	462	948	670	776	124				
	Nemah River	379	Chinook								104						
			Coho								969	25					
			Total								1,073	25					
	Niawiakum River	389	Coho									6					
			Total									6					
	North River	382	Coho								184	141					
			Jackchin								6	6					
			Jackcoho									43	6				
			Total									233	153				
	Smith Creek (Pacific Co)	384	Coho								98	159	6				
			Jackcoho								12						
			Total								110	159	6				
	Willapa River	424	Chinook						26	376	258	13					
			Coho				6			69	161	372	644	43			
			Jackchin						6	6	6						
Jackcoho								6		6	6	6					
Total						6		38	451	431	391	650	43				

Table 23. 2010-2011 Freshwater Salmon Sport Catch by Area and Month (continued)

COASTAL RIVER SYSTEMS																
System	Stream	CRC Code	Species	2010									2011			Total
				Apr	May	Jun	Jul	Aug	Sep	Oct	Nov	Dec	Jan	Feb	Mar	
Coastal River Totals			Chinook	48	85	82	12	116	936	3,220	435	12			12	4,958
			Chum										12	1		13
			Coho				31	56	1,337	12,881	4,398	2,362	325	6		21,396
			Sockeye			94	109	42	6	6						257
			Jackchin		6	6	12	36	51	207	25					343
			Jackcoho				12	18	446	909	175	60	24			1,644
			Total	48	91	182	176	268	2,776	17,235	5,034	2,434	349	6	12	28,611

Table 23. 2010-2011 Freshwater Salmon Sport Catch by Area and Month (continued)

COLUMBIA RIVER SYSTEMS																		
System	Stream	CRC Code	Species	2010									2011			Total		
				Apr	May	Jun	Jul	Aug	Sep	Oct	Nov	Dec	Jan	Feb	Mar			
Columbia R. Mainstem	Columbia - Buoy 10 Line to Rocky Pt-Tongue Pt Line	519	Chinook				1	2,071	185	6							2,263	
			Coho					2,283	490	61								2,834
			Jackcoho								24							24
			Total				1	4,354	675	91								5,121
	Columbia - below Bonneville	521	Chinook	11,458		912	367	3,154	6,144	286	31			12	145	1,635	24,144	
			Coho					19	502	457	18							996
			Sockeye			45	83											128
			Jackchin	40	40	201	59	95	300	8								743
			Jackcoho							8	2							10
			Total	11,498	40	1,158	509	3,268	6,954	753	49				12	145	1,635	26,021
Cowlitz R. System	Cispus River	555	Chinook							6						6		
			Coho							36							36	
			Total							42							42	
	Cowlitz R. below Mayfield Dam	561	Chinook	1,036	303	182	66	412	2,423	1,363	128	6			6	91	6,016	
			Chum							6								6
			Coho				7	79	1,954	4,575	1,428	145		24	6	6	8,224	
			Jackchin	42	72	30	96	108	476	127	12					6	969	
			Jackcoho					12	199	404	24	6					645	
			Total	1,078	375	212	169	611	5,052	6,475	1,592	157		24	12	103	15,860	
	Cowlitz R. between Mayfield & Cowlitz Falls Dams	563	Chinook						48	24	6						78	
			Coho						24	42	54						120	
			Jackchin							6							6	
			Jackcoho						12								12	
Total								84	72	60						216		

Table 23. 2010-2011 Freshwater Salmon Sport Catch by Area and Month (continued)

COLUMBIA RIVER SYSTEMS																
System	Stream	CRC Code	Species	2010								2011			Total	
				Apr	May	Jun	Jul	Aug	Sep	Oct	Nov	Dec	Jan	Feb		Mar
Cowlitz R. System (cont.)	Cowlitz R. above Cowlitz Falls Dam	559	Chinook		88	38	6	13	25	214	44					428
			Coho						61	1,167	807	98				2,133
			Jackchin								6					6
			Jackcoho								24	6				30
			Total		88	38	6	13	86	1,411	857	98				2,597
	Green River (Cowlitz Co)	565	Chinook						90	18						108
			Coho						54	181	24				259	
			Total						144	199	24				367	
	Tilton River	571	Chinook				6		903	360	6					1,275
			Coho						50	739	304				1,093	
			Jackchin						6	18					24	
			Jackcoho								6	6			12	
			Total				6		959	1,123	316				2,404	
	Toutle River	573	Chinook					6	30	6					42	
			Jackchin						12						12	
Total							6	42	6					54		
Toutle River, No Fork	575	Chinook					6	319	48					373		
		Coho						205	108					313		
		Jackchin						54						54		
		Jackcoho						6						6		
		Total					6	584	156					746		

Table 23. 2010-2011 Freshwater Salmon Sport Catch by Area and Month (continued)

COLUMBIA RIVER SYSTEMS																		
System	Stream	CRC Code	Species	2010									2011			Total		
				Apr	May	Jun	Jul	Aug	Sep	Oct	Nov	Dec	Jan	Feb	Mar			
Lewis R. System	Lewis River	611	Chinook	32	13	13		19	38	13						6	134	
			Coho						82	122								204
			Jackchin							6	6							12
			Total	32	13	13		19	126	141							6	350
	Lewis River, North Fork	615	Chinook	158	193	35		76	495	41							23	1,021
			Coho					101	1,761	1,669	462	59						4,052
			Jackchin	29	18	41	64	12	76	12	12							264
			Jackcoho				12	23	287	205								527
Total	187	211	76	76	212	2,619	1,927	474	59					23	5,864			
Lower Columbia	Deep River (Wahkiakum Co)	580	Chinook	12													12	
			Total	12														12
	Elochoman River	583	Chinook						60									60
			Coho							78	84	24						186
			Total						60	78	84	24						246
	Grays River	595	Chinook					12	113	42								167
			Coho						24	334								358
			Jackchin						24	30								54
			Jackcoho						12	78								90
			Total					12	173	484								669
	Grays River, West Fork	596	Chinook							6								6
			Coho						6	197	78	12						293
			Jackcoho						6	36	6							48
			Total						12	239	84	12						347
Kalama River	604	Chinook	152	164	55	6	24	249	12	30							692	
		Coho					30	635	1,578	139	18						2,400	
		Jackchin		12		6	12	36	6								72	
		Jackcoho						12	72								84	
		Total	152	176	55	12	66	932	1,668	169	18						3,248	

Table 23. 2010-2011 Freshwater Salmon Sport Catch by Area and Month (continued)

COLUMBIA RIVER SYSTEMS																	
System	Stream	CRC Code	Species	2010								2011			Total		
				Apr	May	Jun	Jul	Aug	Sep	Oct	Nov	Dec	Jan	Feb		Mar	
Lower Columbia (cont.)	Washougal River	667	Chinook					74	789	72					935		
			Coho			6	18	24	32	6					86		
			Jackchin					12	36							48	
			Jackcoho						6		6					12	
			Total			6	104	855	104	12						1,081	
Lower Columbia System Totals			Chinook	12,848	761	1,235	452	5,867	11,911	2,517	245	6	12	151	1,755	37,760	
			Chum							6							6
			Coho				13	2,530	5,872	11,376	3,404	356	24	6	6	23,587	
			Sockeye			45	83										128
			Jackchin	111	142	272	225	239	1,026	219	24				6	2,264	
			Jackcoho				12	35	548	851	48	6				1,500	
			Total	12,959	903	1,552	785	8,671	19,357	14,969	3,721	368	36	157	1,767	65,245	

Table 23. 2010-2011 Freshwater Salmon Sport Catch by Area and Month (continued)

COLUMBIA RIVER SYSTEMS																	
System	Stream	CRC Code	Species	2010									2011			Total	
				Apr	May	Jun	Jul	Aug	Sep	Oct	Nov	Dec	Jan	Feb	Mar		
Big White Salmon River	Big White Salmon River	508	Chinook	75	50	6	6	68	118	87							410
			Coho						37	149							186
			Jackchin		6						12						18
			Jackcoho						6	25							31
			Total	75	56	6	6	68	161	273							645
Klickitat River	Klickitat River above Fishway 5	608	Chinook			19	31	19	69	126						264	
			Coho							61					61		
			Jackchin			6	25	6		12					49		
			Total			25	56	25	69	199					374		
	Klickitat River below Fishway 5	607	Chinook	25	62	80	25	18	1,085	943	43					2,281	
			Coho						13	1,117	574	86			1,790		
			Jackchin		25	37	18	12	191	98	6				387		
			Jackcoho						31	37	6	18			92		
Total	25	87	117	43	30	1,320	2,195	629	86	18			4,550				
Little White Salmon River & Drano Lake	Little White Salmon River & Drano Lake	618	Chinook	1,738	2,542	42	12	95	244	219					6	4,898	
			Coho					12	41	82						135	
			Jackchin		31			19	50	69						169	
			Jackcoho							6						6	
			Total	1,738	2,573	42	12	126	335	376						6	5,208
Mid Columbia	Columbia Bonneville Dam to The Dalles Dam	527	Chinook	365	323			195	1,083	676	13					2,655	
			Coho					6	49	682	389					1,126	
			Sockeye				12									12	
			Jackchin			18		6	189	128						341	
			Jackcoho							67						67	
			Total	365	323	18	12	207	1,321	1,553	402					4,201	

Table 23. 2010-2011 Freshwater Salmon Sport Catch by Area and Month (continued)

COLUMBIA RIVER SYSTEMS																	
System	Stream	CRC Code	Species	2010								2011			Total		
				Apr	May	Jun	Jul	Aug	Sep	Oct	Nov	Dec	Jan	Feb		Mar	
Mid Columbia (cont.)	Columbia The Dalles Dam to John Day Dam	529	Chinook	688	467	50	25	18	117	31						1,396	
			Coho					7	26	52	7					92	
			Jackchin		24	2			18								44
			Total	688	491	52	25	25	161	83	7						1,532
	Columbia John Day Dam to McNary Dam	531	Chinook	284	148	16	40	43	55	79						665	
			Coho						18	30						48	
			Jackchin	9					6	18						33	
			Total	293	148	16	40	43	79	127						746	
Wind R. System	Wind River above Shipherd Falls	677	Chinook	120	2,607	692									3,419		
			Jackchin		49	12										61	
			Total	120	2,656	704										3,480	
	Wind River below Shipherd Falls	680	Chinook	1,387	2,578	110		18	43	37					6	4,179	
			Coho					6	12	121	36					175	
			Jackchin	18	67	6										91	
Total	1,405	2,645	116		24	55	158	36					6	4,445			
Middle Columbia System Totals			Chinook	4,682	8,777	1,015	139	474	2,814	2,198	56				12	20,167	
			Coho					31	196	2,294	1,006	86					3,613
			Sockeye				12										12
			Jackchin	27	202	81	43	43	454	337	6						1,193
			Jackcoho						37	135	6			18			196
			Total	4,709	8,979	1,096	194	548	3,501	4,964	1,074	86			18	12	25,181

Table 23. 2010-2011 Freshwater Salmon Sport Catch by Area and Month (continued)

COLUMBIA RIVER SYSTEMS																			
System	Stream	CRC Code	Species	2010									2011			Total			
				Apr	May	Jun	Jul	Aug	Sep	Oct	Nov	Dec	Jan	Feb	Mar				
Entiat River	Entiat River	586	Chinook		38				13	6							57		
			Jackchin		6													6	
			Total		44					13	6								63
Okanogan R. System	Okanogan River	627	Chinook				7	20	67								94		
			Sockeye				134	22										156	
			Total				141	42	67									250	
	Similkameen River	629	Chinook				359	83	185									627	
			Sockeye				35		69										104
			Jackchin						37	44									81
			Total				394	120	298								812		
Upper Columbia	Columbia McNary Dam to Hwy 395 Bridge	533	Chinook						49	146	6						201		
			Coho						18	12	6							36	
			Jackchin							18	18								36
			Total							85	176	12							273
	Columbia Hwy 395 Bridge-Priest Rapids	535	Chinook	89	552	106	303	24	2,992	6,934								11,000	
			Coho							18	30	12							60
			Sockeye			12	18												30
			Jackchin		6	6		6	453	984									1,455
			Jackcoho							18	65	6							89
				Total	89	558	124	321	30	3,481	8,013	18						12,634	
	Columbia Priest Rapids to Chief Joseph Dam	537	Chinook			6	2,172	1,586	1,153	838								5,755	
			Coho						19	45	6							70	
Sockeye						8,779	2,250											11,029	
Jackchin					6	274	227	143	107									757	
Total						12	11,225	4,063	1,315	990	6							17,611	

Table 23. 2010-2011 Freshwater Salmon Sport Catch by Area and Month (continued)

COLUMBIA RIVER SYSTEMS																	
System	Stream	CRC Code	Species	2010								2011			Total		
				Apr	May	Jun	Jul	Aug	Sep	Oct	Nov	Dec	Jan	Feb		Mar	
Wenatchee R. System	Icicle Creek	672	Chinook		379	1,266	183									1,828	
			Jackchin		6	58	13									77	
			Total		385	1,324	196									1,905	
	Lake Wenatchee	670	Sockeye				796	6,026	151						6,973		
			Total				796	6,026	151						6,973		
Yakima R. System	Yakima River	690	Chinook		271	120				147	294					832	
			Coho								13					13	
			Jackchin		6	43				8	31					88	
			Total		277	163				155	338					933	
Upper Columbia System Totals			Chinook	89	1,240	1,498	3,024	1,726	4,599	8,212	6					20,394	
			Coho							55	100	24					179
			Sockeye			12	9,762	8,298	220								18,292
			Jackchin		24	113	287	270	666	1,140							2,500
			Jackcoho							18	65	6					89
			Total	89	1,264	1,623	13,073	10,294	5,558	9,517	36						41,454

Table 23. 2010-2011 Freshwater Salmon Sport Catch by Area and Month (continued)

COLUMBIA RIVER SYSTEMS																		
System	Stream	CRC Code	Species	2010									2011			Total		
				Apr	May	Jun	Jul	Aug	Sep	Oct	Nov	Dec	Jan	Feb	Mar			
Snake R. System	Snake River: below Ice Harbor Dam	640	Chinook	545	848												1,393	
			Jackchin	6	124												130	
			Total	551	972												1,523	
	Snake River: Ice Harbor to Lower Monumental Dam	642	Chinook	6	25													31
			Total	6	25												31	
	Snake River: Lower Monumental to Little Goose Dam	644	Chinook	414	1,374	13	6	6										1,813
			Jackchin		93				6	6								105
Total			414	1,467	13	6	6	6	6	6							1,918	
Snake River: Little Goose to Lower Granite Dam	646	Chinook	12	19							6					6	43	
		Jackchin	6								6						12	
		Total	18	19							12					6	55	
Snake River: Lower Granite to Interstate Bridge	648	Chinook		12						50	124						186	
		Jackchin								6	6						12	
		Total		12						56	130						198	
Snake River: Upstream of Interstate Bridge	650	Chinook	6							19	130						155	
		Jackchin								19	43						62	
		Total	6							38	173						217	
Snake River System Totals			Chinook	983	2,278	13	6	6	69	260					6	3,621		
			Jackchin	12	217				31	61						321		
			Total	995	2,495	13	6	6	100	321				6	3,942			

Table 23. 2010-2011 Freshwater Salmon Sport Catch by Area and Month (continued)

PUGET SOUND RIVER SYSTEMS																		
System	Stream	CRC Code	Species	2010								2011			Total			
				Apr	May	Jun	Jul	Aug	Sep	Oct	Nov	Dec	Jan	Feb		Mar		
Chambers Cr. System	Chambers Creek	714	Chinook					59	59	14						132		
			Coho						5	5							10	
			Jackchin								9							9
			Total					59	64	28								151
Deschutes R. System	Deschutes River	728	Chinook					6	13							19		
			Total					6	13								19	
Duckabush R. System	Duckabush River	736	Chum									6	32			38		
			Total										6	32			38	
Dungeness R. System	Dungeness River	738	Coho							151	63					214		
			Jackcoho								13	6					19	
			Total								164	69					233	
Elwha R. System	Elwha River	742	Coho							70						70		
			Jackcoho								6						6	
			Total								76						76	
Green-Duwamish R. System	Green - Duwamish River	746	Chinook							7						7		
			Chum								185	305	44				534	
			Coho					6	480	355	44						885	
			Jackchin							12							12	
			Jackcoho							25	19	12					56	
Total					6	517	566	361	44					1,494				
Hoko R. System	Hoko River	752	Coho									2				2		
			Total										2				2	
Kennedy Cr. System	Kennedy Creek	754	Chum							195	94					289		
			Total								195	94					289	
Lake Washington System	Lake Sammamish	764	Chinook					84	130							214		
			Total					84	130							214		
	Lake Washington	762	Coho							6						6		
Total									6						6			

Table 23. 2010-2011 Freshwater Salmon Sport Catch by Area and Month (continued)

PUGET SOUND RIVER SYSTEMS																
System	Stream	CRC Code	Species	2010									2011			Total
				Apr	May	Jun	Jul	Aug	Sep	Oct	Nov	Dec	Jan	Feb	Mar	
Minter Cr. System	Minter Creek	778	Chum									3,872	1,409			5,281
			Total									3,872	1,409			5,281
Nisqually R. System	Nisqually River	786	Chinook				43	340	1,858	201			18			2,460
			Chum						6	24	103	1,015	61			1,209
			Coho					12	255	532						799
			Jackchin				6	42	218	30	6					302
			Jackcoho						109	30						139
			Total			49	394	2,446	817	109	1,033	61				4,909
Nooksack Samish R. System	Dakota Creek (Whatcom Co)	724	Chum							6					6	
			Coho						6	129					135	
			Jackchin							6					6	
			Total						6	141					147	
	Nooksack River	788	Chinook						25	19	6				50	
			Chum								68	6			74	
			Coho						82	777	57	6			922	
			Jackchin						6						6	
			Jackcoho								12				12	
			Total						113	808	131	12			1,064	
	Samish River	816	Chinook				69	401	4,660	409					5,539	
			Chum							118	12				130	
Coho							43	155	76					274		
Jackchin							49	135	6					190		
Jackcoho								25						25		
Total					69	493	4,975	609	12					6,158		

Table 23. 2010-2011 Freshwater Salmon Sport Catch by Area and Month (continued)

PUGET SOUND RIVER SYSTEMS																
System	Stream	CRC Code	Species	2010								2011			Total	
				Apr	May	Jun	Jul	Aug	Sep	Oct	Nov	Dec	Jan	Feb		Mar
Nooksack Samish R. System (cont.)	Whatcom Creek	884	Chinook								18					
			Chum								197	1,081	31			
			Coho								43	18				
			Jackchin								6					
			Total								264	1,099	31			
Puyallup R. System	Carbon River	802	Chinook					6	157							
			Coho						18	24						
			Jackcoho					6								
			Total					12	175	24						
	Puyallup River	804	Chinook					95	214		6					
			Chum						13		171	142				
			Pink						1							
			Coho					132	374	55	56	12				
			Jackchin					6	30							
			Jackcoho					21	21							
Total					254	653	55	233	154							
Quilcene R. System	Quilcene River	812	Coho					151	157	31						
			Jackcoho					50	57							
			Total					201	214	31						
Skagit R. System	Baker Lake	825	Sockeye				1,265	1,542	126							
			Total				1,265	1,542	126							
	Baker River	824	Sockeye				154									
			Total				154									
	Cascade River	826	Chinook			59	24									
			Coho							118	237	47	12			
Jackchin					18											
Total				77	24			118	237	47	12					

Table 23. 2010-2011 Freshwater Salmon Sport Catch by Area and Month (continued)

PUGET SOUND RIVER SYSTEMS																			
System	Stream	CRC Code	Species	2010									2011			Total			
				Apr	May	Jun	Jul	Aug	Sep	Oct	Nov	Dec	Jan	Feb	Mar				
Skagit R. System (cont.)	Skagit River	830	Chinook			77	36										113		
			Pink							1								1	
			Coho							740	1,367	167	96						2,370
			Jackchin			30	6	6											42
			Jackcoho								12	18							30
			Total					107	42	6	752	1,386	167	96					
Skokomish R. System	Skokomish River	834	Chinook				323	4,943	1,000	18							6	6,290	
			Chum								628	287	30						945
			Coho						48	160	273	6							487
			Jackchin						141	31									172
			Jackcoho										59						59
			Total						323	5,132	1,191	978	293	30				6	
Snohomish R. System	Skykomish River	844	Chinook			142	58		6									206	
			Chum										12						12
			Coho								164	311	91	18					584
			Jackchin			18						6							24
			Jackcoho									6							6
			Total					160	58		170	323	103	18					
	Snohomish River	850	Coho							365	421	6							792
			Jackcoho								6	12							18
			Total								371	433	6						
	Snoqualmie River	852	Coho							6	145	31	6						188
			Total								6	145	31	6					
	Stillaguamish River	872	Coho							61	256	12	12						341
Total									61	256	12	12							341

Table 23. 2010-2011 Freshwater Salmon Sport Catch by Area and Month (continued)

PUGET SOUND RIVER SYSTEMS																
System	Stream	CRC Code	Species	2010								2011			Total	
				Apr	May	Jun	Jul	Aug	Sep	Oct	Nov	Dec	Jan	Feb		Mar
Puget Sound System Totals			Chinook			278	553	5,934	8,122	686	12	18			6	15,609
			Chum						19	1,353	6,011	2,709	61			10,153
			Pink						1	1						2
			Coho					392	3,146	5,264	600	162				9,564
			Sockeye				1,419	1,542	126							3,087
			Jackchin			66	12	244	432	63	6					823
			Jackcoho					77	255	175	18					525
			Total			344	1,984	8,189	12,101	7,542	6,647	2,889	61		6	39,763

Table 23. 2010-2011 Freshwater Salmon Sport Catch by Area and Month (continued)

UNKNOWN AREAS																
System	Stream	CRC Code	Species	2010								2011			Total	
				Apr	May	Jun	Jul	Aug	Sep	Oct	Nov	Dec	Jan	Feb		Mar
Unknown Area Totals			Chinook	161	149	68	155	367	438	422	64		25	19	87	1,955
			Chum						14	47	89	54				204
			Coho				51	208	219	486	111	32	25			1,132
			Sockeye				186	140	12							338
			Jackchin			12	30	24	12	24	90					192
			Jackcoho						20	33			7			60
			Total	161	161	98	416	727	727	1,078	264	86	57	19	87	3,881

Table 23. 2010-2011 Freshwater Salmon Sport Catch by Area and Month (continued)

STATEWIDE TOTALS																
System	Stream	CRC Code	Species	2010								2011			Total	
				Apr	May	Jun	Jul	Aug	Sep	Oct	Nov	Dec	Jan	Feb		Mar
Statewide Totals			Chinook	18,811	13,290	4,189	4,341	14,490	28,889	17,515	818	36	37	176	1,872	104,464
			Chum						33	1,418	6,101	2,763	61			10,376
			Pink						1	1						2
			Coho				95	3,217	10,825	32,401	9,543	2,998	374	12	6	59,471
			Sockeye			151	11,571	10,022	364	6						22,114
			Jackchin	150	603	568	603	844	2,684	2,117	61				6	7,636
			Jackcoho				24	130	1,324	2,168	253	66	49			4,014
			Total	18,961	13,893	4,908	16,634	28,703	44,120	55,626	16,776	5,863	521	188	1,884	208,077

Table 24. 2010-2011 Washington Sport Salmon Fishing, by Residence

County of Residence	Number Catch Record Cards	Population by County	% Catch Record Card Holders	Total Freshwater Salmon Catch	Total Marine Salmon Catch	Total Salmon	Average Catch per Card
Adams	1,416	18,728	7.6	629	100	729	0.51
Asotin	2,317	21,623	10.7	355	72	427	0.18
Benton	17,185	175,177	9.8	7,182	1,371	8,553	0.5
Chelan	7,514	72,453	10.4	11,184	795	11,979	1.59
Clallam	10,466	71,404	14.7	2,493	7,478	9,971	0.95
Clark	40,630	425,363	9.6	22,910	5,213	28,123	0.69
Columbia	595	4,078	14.6	215	126	341	0.57
Cowlitz	20,094	102,410	19.6	15,739	2,384	18,123	0.9
Douglas	3,452	38,431	9.0	3,804	210	4,014	1.16
Ferry	350	7,551	4.6	128	107	235	0.67
Franklin	6,387	78,163	8.2	2,737	446	3,183	0.5
Garfield	354	2,266	15.6	53	43	96	0.27
Grant	4,855	89,120	5.4	2,254	535	2,789	0.57
Grays Harbor	12,131	72,797	16.7	7,287	6,260	13,547	1.12
Island	10,983	78,506	14.0	1,031	1,959	2,990	0.27
Jefferson	4,290	29,872	14.4	215	2,610	2,825	0.66
King	95,476	1,931,249	4.9	18,506	24,889	43,395	0.45
Kitsap	22,382	251,133	8.9	3,233	8,566	11,799	0.53
Kittitas	2,822	40,915	6.9	1,421	1,185	2,606	0.92
Klickitat	3,116	20,318	15.3	2,365	257	2,622	0.84
Lewis	10,839	75,455	14.4	9,273	1,912	11,185	1.03
Lincoln	771	10,570	7.3	664	258	922	1.2
Mason	7,112	60,699	11.7	1,922	2,956	4,878	0.69
Okanogan	4,110	41,120	10.0	2,726	235	2,961	0.72
Pacific	4,296	20,920	20.5	2,709	2,716	5,425	1.26
Pend Oreille	516	13,001	4.0	105	126	231	0.45
Pierce	64,102	795,225	8.1	18,395	18,179	36,574	0.57
San Juan	1,867	15,769	11.8	82	563	645	0.35
Skagit	16,891	116,901	14.4	5,539	1,453	6,992	0.41
Skamania	1,445	11,066	13.1	1,462	15	1,477	1.02
Snohomish	59,663	713,335	8.4	10,805	10,806	21,611	0.36
Spokane	16,955	471,221	3.6	6,046	1,442	7,488	0.44
Stevens	1,579	43,531	3.6	524	187	711	0.45
Thurston	23,543	252,264	9.3	10,595	7,272	17,867	0.76
Wahkiakum	1,241	3,978	31.2	1,555	85	1,640	1.32
Walla Walla	5,087	58,781	8.7	1,404	35	1,439	0.28
Whatcom	17,769	201,140	8.8	4,526	2,625	7,151	0.4
Whitman	2,145	44,776	4.8	204	165	369	0.17
Yakima	17,158	243,231	7.1	7,677	2,407	10,084	0.59
Unknown WA	1,374			833	475	1,308	0.95
Washington Total	525,278	6,724,540	7.8	190,787	118,518	309,305	0.59
Other State Total	47,583			17,021	9,126	26,147	0.55
Canada	1,633			222	157	379	0.23
Other	477			47	53	100	0.21
Grand Total	574,971			208,077	127,854	335,931	0.58

Source: Table 1: Annual Estimates of the Resident Population for Counties of Washington: April 1, 2010 to July 1, 2011 (CO-EST2011-01-53). Source: Population Division, U.S. Census Bureau. Release Date: April 2012.

Table 25. 2010-2011 Frequency Distribution of Estimated Salmon Catch Record Cards and Catch

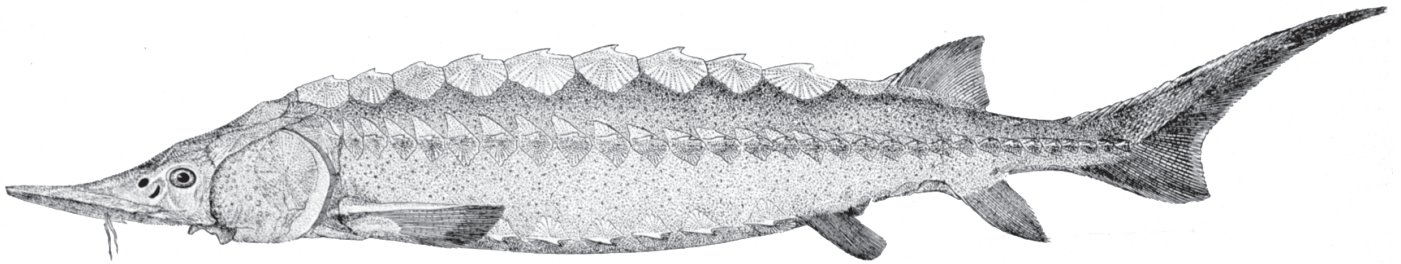
#Salmon per Catch Record Card	Number of Cards	Cumulative Number of Cards	Percent Cards	Cumulative Percent Cards	Total Catch	Cumulative Total Catch	Percent Catch	Cumulative Percent Catch
0	492,723	492,723	85.70%	85.70%	0	0	0.00%	0.00%
1	26,845	519,568	4.67%	90.36%	26,845	26,845	7.99%	7.99%
2	18,884	538,452	3.28%	93.65%	37,768	64,613	11.24%	19.23%
3	8,275	546,727	1.44%	95.09%	24,825	89,438	7.39%	26.62%
4	6,653	553,380	1.16%	96.25%	26,612	116,050	7.92%	34.54%
5	3,974	557,354	0.69%	96.94%	19,870	135,920	5.91%	40.45%
6	3,419	560,773	0.59%	97.53%	20,514	156,434	6.11%	46.56%
7	2,554	563,327	0.44%	97.98%	17,878	174,312	5.32%	51.88%
8	1,933	565,260	0.34%	98.31%	15,464	189,776	4.60%	56.48%
9	1,301	566,561	0.23%	98.54%	11,709	201,485	3.49%	59.97%
10	1,354	567,915	0.24%	98.77%	13,540	215,025	4.03%	64.00%
11	967	568,882	0.17%	98.94%	10,637	225,662	3.17%	67.17%
12	817	569,699	0.14%	99.08%	9,804	235,466	2.92%	70.09%
13	621	570,320	0.11%	99.19%	8,073	243,539	2.40%	72.49%
14	501	570,821	0.09%	99.28%	7,014	250,553	2.09%	74.58%
15	591	571,412	0.10%	99.38%	8,865	259,418	2.64%	77.22%
16	388	571,800	0.07%	99.45%	6,208	265,626	1.85%	79.07%
17	376	572,176	0.07%	99.51%	6,392	272,018	1.90%	80.97%
18	310	572,486	0.05%	99.57%	5,580	277,598	1.66%	82.63%
19	239	572,725	0.04%	99.61%	4,541	282,139	1.35%	83.98%
20	203	572,928	0.04%	99.65%	4,060	286,199	1.21%	85.19%
21	280	573,208	0.05%	99.69%	5,880	292,079	1.75%	86.94%
22	239	573,447	0.04%	99.74%	5,258	297,337	1.57%	88.51%
23	149	573,596	0.03%	99.76%	3,427	300,764	1.02%	89.53%
24	221	573,817	0.04%	99.80%	5,304	306,068	1.58%	91.11%
25	245	574,062	0.04%	99.84%	6,125	312,193	1.82%	92.93%
26	811	574,873	0.14%	99.98%	21,086	333,279	6.28%	99.21%
27	78	574,951	0.01%	100.00%	2,106	335,385	0.63%	99.84%
28	6	574,957	0.00%	100.00%	168	335,553	0.05%	99.89%
30	6	574,963	0.00%	100.00%	180	335,733	0.05%	99.94%
33	6	574,969	0.00%	100.00%	198	335,931	0.06%	100.00%
Total	574,969		100.00%		335,931		100.00%	

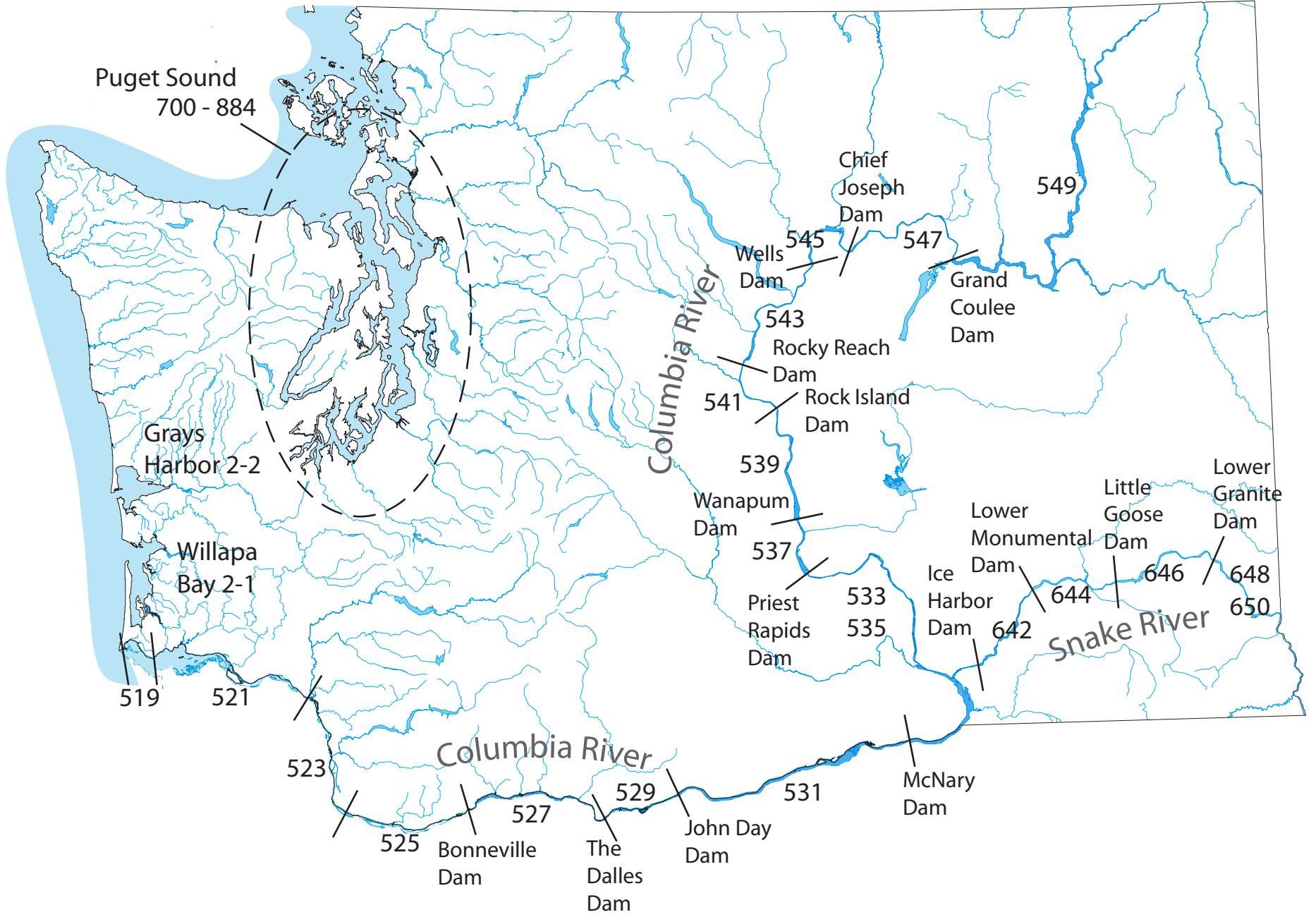
*Note: A single card has room for twenty-six salmon entries. Cards showing more than that were filled out incorrectly, with more than one salmon per line.

Table 26. 2010-2011 Sport Salmon Inventory of Catch Record Cards Received

Response Type	With Catch		No catch		Total Cards & Letters	Number of Salmon			Catch per Card		
	Catch Records	Reminder Letters	Catch Records	Reminder Letters		Catch Records	Reminder Letters	Total	Catch Records	Reminder Letters	Total
Prior to reminder	1,373		4,430		5,803	5,011		5,011	0.86		0.86
After reminder postcard	9,649		33,301		42,950	42,142		42,142	0.98		0.98
After 1st reminder letter	1,449	896	3,095	24,380	29,820	5,513	2,758	8,271	1.21	0.11	0.28
From license dealer	424		493		917	880		880	0.96		0.96
Total	12,895	896	41,319	24,380	79,490	53,546	2,758	56,304	0.99	0.11	0.71

Sturgeon





DESCRIPTION OF STURGEON CATCH RECORD CARD AREAS

Columbia River

519	Buoy 10 to Megler - Astoria Bridge
521	Megler - Astoria Bridge to Longview Bridge
523	Longview Bridge to I-5 Bridge
525	I-5 Bridge to Bonneville Dam
527	Bonneville to the Dalles Dam
529	The Dalles Dam to John Day Dam
531	John Day to McNary Dam
533	McNary Dam to Pasco
535	Pasco to Priest Rapids Dam
537	Priest Rapids Dam to Wanapum Dam
539	Wanapum to Rock Island Dam
541	Rock Island to Rocky Reach Dam
543	Rocky Reach to Wells Dam
545	Wells to Chief Joseph Dam
547	Chief Joseph to Grand Coulee Dam
549	Grand Coulee Dam to Canadian Border

Snake River

640	Below Ice Harbor Dam
642	Ice Harbor to Lower Monumental Dam
644	Lower Monumental to Little Goose Dam
646	Little Goose to Lower Granite Dam
648	Lower Granite to Clarkston
650	Upstream of Interstate Bridge, Clarkston

Other - including Puget Sound

2-1	Willapa Bay
2-2	Grays Harbor
700 - 884	Puget Sound

Table 27. 2010-2011 Sport Sturgeon Catch, by Area and Month

COASTAL RIVER SYSTEMS															
Catch Area	Species	2010										2011			Total
		Apr	May	Jun	Jul	Aug	Sep	Oct	Nov	Dec	Jan	Feb	Mar		
Area 2-1: Willapa Bay	White			7	7										14
Area 2-2: Grays Harbor	White				7										7
Chehalis R. below Black R.	White			7					7	7			7	15	43
Naselle River	White	7	15	44	58	15				7	29	22	7		204
Willapa River	White			22	15	7							15	22	81
Total	White	7	15	80	87	22			7	14	29	22	29	37	349

Table 27. 2010-2011 Sport Sturgeon Catch, by Area and Month (continued)

COLUMBIA RIVER SYSTEMS															
Catch Area	Species	2010										2011			Total
		Apr	May	Jun	Jul	Aug	Sep	Oct	Nov	Dec	Jan	Feb	Mar		
Columbia R 01: Buoy 10 to Megler-Astoria Bridge	White		128	876	849	26									1,879
	Green			1											1
Columbia R 02: Megler-Astoria Bridge to Longview Bridge	White		174	881	869	25		32							1,988
	Green			1											1
Columbia R 03: Longview Br. to I-5 Bridge	White	31	148	44	62			168	15	13	19	18	37	560	
Columbia R 04: I-5 Bridge to Bonneville Dam	White	44	118	10	6			864	83			1	18	1,100	
Columbia R 05: Bonneville to The Dalles Dam	White										465	186		651	
Columbia R 06: The Dalles to John Day Dam	White	62											3	65	
Columbia R 07: John Day to McNary Dam	White										48	20	39	107	
Columbia R 08: McNary Dam - Hwy 395 Bridge in Pasco	White		7	7	29						2			45	

Table 27. 2010-2011 Sport Sturgeon Catch, by Area and Month (continued)

COLUMBIA RIVER SYSTEMS														
Catch Area	Species	2010									2011			Total
		Apr	May	Jun	Jul	Aug	Sep	Oct	Nov	Dec	Jan	Feb	Mar	
Columbia R 09: Hwy 395 Bridge to Priest Rapids Dam	White			22	15			1						38
Cowlitz R. below Mayfield Dam	White	15	7		7			15	7	22	15			88
Little White Salmon River & Drano Lake	White										15			15
Snake R 1: Below Ice Harbor Dam	White			7										7
Snake R 2: Ice Harbor to Lower Monumental Dam	White	7	22	29	124	29								211
Snake R 3: Lower Monumental to Little Goose Dam	White		16	8	24	32								80
Snake R 4: Little Goose to Lower Granite Dam	White		80	44	58		7							189
Total	White	159	700	1,928	2,043	112	7	1,080	105	35	564	225	97	7,055
	Green			2										2
	Total	159	700	1,930	2,043	112	7	1,080	105	35	564	225	97	7,057

Table 27. 2010-2011 Sport Sturgeon Catch, by Area and Month (continued)

PUGET SOUND RIVER SYSTEMS														
Catch Area	Species	2010									2011			Total
		Apr	May	Jun	Jul	Aug	Sep	Oct	Nov	Dec	Jan	Feb	Mar	
Area 8-1: Skagit Bay-Saratoga Passage	White	7	15											22
Area 8-2: Port Susan-Port Gardner	White	44	58	29	7	7					7			153
Skagit River	White							22						22
Snohomish River	White			7		15			15				29	66
Stillaguamish River	White	7			7							7	7	29
Total	White	58	73	36	14	22		22	15		7	7	36	290

Table 27. 2010-2011 Sport Sturgeon Catch, by Area and Month (continued)

UNKNOWN RIVER SYSTEMS															
Catch Area	Species	2010										2011			Total
		Apr	May	Jun	Jul	Aug	Sep	Oct	Nov	Dec	Jan	Feb	Mar		
Unknown Area Totals	White	7	22	7	7			29	22			7	15	7	124

Table 27. 2010-2011 Sport Sturgeon Catch, by Area and Month (continued)

STATEWIDE TOTALS															
Catch Area	Species	2010										2011			Total
		Apr	May	Jun	Jul	Aug	Sep	Oct	Nov	Dec	Jan	Feb	Mar		
Statewide Totals	White	231	810	2051	2151	156	7	1138	156	64	600	276	177	7,818	
	Green			2										2	
	Total	231	810	2,053	2,151	156	7	1,138	156	64	600	276	177	7,820	

Table 28. 2010-2011 Washington Sport Sturgeon Fishing, by Residence

County of Residence	Number Catch Record Cards	Population by County	% Catch Record Holders	Total Sturgeon	Average Catch per Catch Record Card
Adams	1,416	18,728	7.6	20	0.01
Asotin	2,317	21,623	10.7		
Benton	17,185	175,177	9.8	137	0.01
Chelan	7,514	72,453	10.4	26	0.00
Clallam	10,466	71,404	14.7	52	0.00
Clark	40,630	425,363	9.6	1,833	0.05
Columbia	595	4,078	14.6	32	0.05
Cowlitz	20,094	102,410	19.6	992	0.05
Douglas	3,452	38,431	9.0	6	0.00
Ferry	350	7,551	4.6		
Franklin	6,387	78,163	8.2	104	0.02
Garfield	354	2,266	15.6		
Grant	4,855	89,120	5.4	20	0.00
Grays Harbor	12,131	72,797	16.7	177	0.01
Island	10,983	78,506	14.0	52	0.00
Jefferson	4,290	29,872	14.4	26	0.01
King	95,476	1,931,249	4.9	404	0.00
Kitsap	22,382	251,133	8.9	72	0.00
Kititas	2,822	40,915	6.9	20	0.01
Klickitat	3,116	20,318	15.3	169	0.05
Lewis	10,839	75,455	14.4	358	0.03
Lincoln	771	10,570	7.3	20	0.03
Mason	7,112	60,699	11.7	91	0.01
Okanogan	4,110	41,120	10.0	52	0.01
Pacific	4,296	20,920	20.5	555	0.13
Pend Oreille	516	13,001	4.0		
Pierce	64,102	795,225	8.1	463	0.01
San Juan	1,867	15,769	11.8	6	0.00
Skagit	16,891	116,901	14.4	52	0.00
Skamania	1,445	11,066	13.1	124	0.09
Snohomish	59,663	713,335	8.4	470	0.01
Spokane	16,955	471,221	3.6	163	0.01
Stevens	1,579	43,531	3.6	6	0.00
Thurston	23,543	252,264	9.3	222	0.01
Wahkiakum	1,241	3,978	31.2	131	0.11
Walla Walla	5,087	58,781	8.7	59	0.01
Whatcom	17,769	201,140	8.8	20	0.00
Whitman	2,145	44,776	4.8	6	0.00
Yakima	17,158	243,231	7.1	215	0.01
Unknown WA	1,374			46	0.03
Washington Total	525,278	6,724,540	7.8	7,201	0.01
Other State Total	47,583			607	0.01
Canada	1,633			6	0.00
Other	477			6	0.01
Grand Total	574,971			7,820	0.01

Note: The figures do not accurately multiply across because of the bias adjustment factor and rounding of numbers.

Source: Table 1: Annual Estimates of the Resident Population for Counties of Washington: April 1, 2010 to July 1, 2011 (CO-EST2011-01-53). Source: Population Division, U.S. Census Bureau. Release Date: April 2012.

Table 29. 2010-2011 Frequency Distribution of Estimated Sturgeon Catch Record Cards and Catch

#Sturgeon per Catch Record Card	Number of Cards	Cumulative Number of Cards	Percent Cards	Cumulative Percent Cards	Total Catch	Cumulative Total Catch	Percent Catch	Cumulative Percent Catch
0	569,469	569,469	99.0%	99.0%	0	0	0.0%	0.0%
1	4,009	573,478	0.7%	99.7%	4,009	4,009	51.3%	51.3%
2	951	574,429	0.2%	99.9%	1,902	5,911	24.3%	75.6%
3	328	574,757	0.1%	100.0%	984	6,895	12.6%	88.2%
4	135	574,892	0.0%	100.0%	540	7,435	6.9%	95.1%
5	77	574,969	0.0%	100.0%	385	7,820	4.9%	100.0%
Total	574,969		100.0%		7,820		100.0%	

Table 30. 2010-2011 Sport Sturgeon Inventory of Catch Record Cards Received

Response Type	With Catch		No catch		Total Cards & Letters	Number of Sturgeon			Catch per Card		
	Catch Records	Reminder Letters	Catch Records	Reminder Letters		Catch Records	Reminder Letters	Total	Catch Records	Reminder Letters	Total
Prior to reminder	75		5,728		5,803	100		100	0.02		0.02
After reminder postcard	585		42,268		42,853	861		861	0.02		0.02
After 1st reminder letter	122	57	4,393	25,219	29,791	164	70	234	0.04	0.003	0.01
From license dealer	17		900		917	22		22	0.02		0.02
Total	799	57	53,289	25,219	79,364	1,147	70	1,217	0.02	0.003	0.02

Steelhead

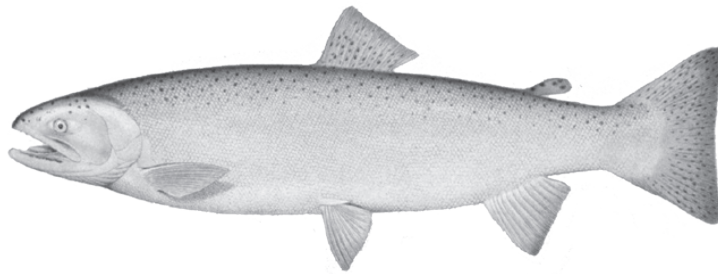


Table 31. 2010-2011 Steelhead Sport Catch, by Area and Month

COASTAL RIVERS AND MARINE CATCH AREAS																	
System	Water	Race	Mark	2010									2011			Total	
				Apr	May	Jun	Jul	Aug	Sep	Oct	Nov	Dec	Jan	Feb	Mar		
Bear R. System	Bear River (Pacific Co.)	S	Marked				9									9	
Chehalis R. System*	Chehalis R. above Black R.	S	Marked				2	2								4	
		W	Marked									12	51	51	2	116	
	Chehalis R. below Black R.	S	Marked			5	17	24	10							56	
		W	Marked									59	171	28	18	276	
	Chehalis River, So. Fork	S	Marked							2						2	
		W	Marked												2	2	
	Cloquallam Creek	W	Marked										2		2		
	Newaukum River	S	Marked						2							2	
		W	Marked											6	10	16	
	Satsop River	S	Marked			5					2					7	
		W	Marked									8	124	301	118	55	606
			Unmarked												2		2
			Total									8	124	301	120	55	608
	Satsop River, West Fork	W	Marked										8	8	16		
	Skookumchuck River	W	Marked	89								2	101	479	400	406	1,477
	Van Winkle Creek	S	Marked			15										15	
	Wishkah River	S	Marked							2						2	
W		Marked												2	2		
Wynoochee River	S	Marked			139	291	178	103	10						721		
	W	Marked									12	161	580	283	122	1,158	
Chehalis R. System Totals	S	Marked			164	310	206	117	12						809		
	W	Marked	89								22	457	1,592	896	615	3,671	
		Unmarked												2		2	
		Total	89								22	457	1,592	898	615	3,673	

Table 31. 2010-2011 Steelhead Sport Catch, by Area and Month (continued)

COASTAL RIVERS AND MARINE CATCH AREAS																		
System	Water	Race	Mark	2010									2011			Total		
				Apr	May	Jun	Jul	Aug	Sep	Oct	Nov	Dec	Jan	Feb	Mar			
Copalis R. System *	Copalis River	S	Marked						6	3						9		
		W	Marked											5		5		
Elk R. System *	Elk River	W	Marked									2				2		
Goodman Cr. System *	Goodman Creek (Jefferson Co.)	S	Marked				3									3		
		W	Marked									2		3		5		
Hoh R. System *	Hoh River above Hwy 101	S	Marked			3	5	42	13	3						66		
		W	Marked										22	8	8	3	41	
			Unmarked	6											3	5	14	
			Total	6									22	8	11	8	55	
	Hoh River below Hwy 101	S	Marked		3	21	37	152	27	37							277	
			Unmarked							3								3
			Total		3	21	37	152	27	40								280
		W	Marked	8									36	133	28	30	36	271
			Unmarked	14												28	69	111
			Total	22									36	133	28	58	105	382
	Hoh River, So. Fork	S	Marked					3		11							14	
		W	Marked	3											3		6	
	Hoh R. System Totals	S	Marked		3	24	42	197	40	51							357	
			Unmarked							3								3
			Total		3	24	42	197	40	54								360
W		Marked	11									36	155	36	41	39	318	
		Unmarked	20												31	74	125	
		Total	31									36	155	36	72	113	443	
Hoquiam R. System *	Hoquiam River	S	Marked				3									3		
		W	Marked										2				2	

Table 31. 2010-2011 Steelhead Sport Catch, by Area and Month (continued)

COASTAL RIVERS AND MARINE CATCH AREAS																	
System	Water	Race	Mark	2010									2011			Total	
				Apr	May	Jun	Jul	Aug	Sep	Oct	Nov	Dec	Jan	Feb	Mar		
Humptulips R. System *	Humptulips River	S	Marked			66	151	142	33	47						439	
		W	Marked								66	162	82	13	26	349	
	Humptulips River, W. Fork	W	Marked												3	3	
	Stevens Creek	W	Marked									8	3			11	
	Humptulips R. System Totals	S	Marked			66	151	142	33	47							439
		W	Marked									66	170	85	13	29	363
Johns R. System *	Johns River	W	Marked											2		2	
Kalaloch Cr. System *	Kalaloch Creek	S	Marked					6								6	
		W	Marked									2				2	
Marine Water	Area 1: Col R - Ledbetter	S	Marked			16	20	92	40	24						192	
		W	Marked									28	5	9	5	47	
	Area 2-1: Willapa Bay	S	Marked					12								12	
		W	Marked											5	5	10	
	Marine Water Totals	S	Marked			16	20	104	40	24							204
		W	Marked									28	5	14	10		57
Marine Water *	Area 2: Westport	S	Marked		4	20	16	32	44	12						128	
	Area 2-2: Grays Harbor	S	Marked				4									4	
	Area 3: La Push	S	Marked				4		8	4						16	
		W	Marked				5							5	9	19	
	Area 4: Cape Flattery	S	Marked			4			16							20	
	Marine Water Totals	S	Marked			4	24	24	32	68	16						168
W		Marked				5							5	9	19		
Moclips R. System *	Moclips River	S	Marked			12										12	
Mosquito Cr. System *	Mosquito Creek (Jefferson Co.)	W	Marked									8	2			10	

Table 31. 2010-2011 Steelhead Sport Catch, by Area and Month (continued)

COASTAL RIVERS AND MARINE CATCH AREAS																	
System	Water	Race	Mark	2010									2011			Total	
				Apr	May	Jun	Jul	Aug	Sep	Oct	Nov	Dec	Jan	Feb	Mar		
Naselle R. System	Naselle River	S	Marked						10	20						30	
		W	Marked	2							33	85	20	9	7	156	
	Salmon Creek (Pacific Co.)	W	Marked									2	4			6	
	Naselle R. System Totals	S	Marked							10	20						30
		W	Marked	2								33	87	24	9	7	162
Nemah R. System	Nemah River	S	Marked							3						3	
		W	Marked								3	20	12	3	3	41	
North R. System	North River	W	Marked								4	58	81	22		165	
	Smith Creek (Pacific Co.)	W	Marked									18	22	9		49	
	North R. System Totals	W	Marked								4	76	103	31		214	
Ozette R. System *	Ozette River	S	Marked							6						6	
Palix R. System	Niawiakum River	S	Marked			3										3	
		W	Marked	2								2				4	
	Palix River	S	Marked			3										3	
	Palix R. System Totals	S	Marked			6											6
		W	Marked	2									2				4
Queets R. System *	Clearwater River	S	Marked					2		2						4	
		W	Marked	3								3	13	21	13	53	
			Unmarked	5										5	35	45	
			Total	8								3	13	26	48	98	
	Queets River	S	Marked				3	26	5	5							39
		W	Marked								37	122	5	11	5	180	
	Salmon River (Jefferson Co.)	S	Marked						6	26							32
		W	Marked									187	233	51	8		479

Table 31. 2010-2011 Steelhead Sport Catch, by Area and Month (continued)

COASTAL RIVERS AND MARINE CATCH AREAS																	
System	Water	Race	Mark	2010								2011			Total		
				Apr	May	Jun	Jul	Aug	Sep	Oct	Nov	Dec	Jan	Feb		Mar	
Queets R. System * (cont.)	Queets R. System Totals	S	Marked				3	28	11	33						75	
		W	Marked	3							227	355	69	40	18	712	
			Unmarked	5											5	35	45
			Total	8							227	355	69	45	53	757	
Quillayute R. System *	Bogachiel River	S	Marked		3	29	66	74	21	32						225	
		W	Marked	14							700	1,627	254	86	92	2,773	
			Unmarked	16									5		30	97	148
			Total	30							700	1,632	254	116	189	2,921	
	Calawah River	S	Marked		5	255	253	150	229	97						989	
			Unmarked				3									3	
			Total		5	255	253	153	229	97						992	
		W	Marked	8								68	176	46	11	6	315
			Unmarked	3												16	19
			Total	11								68	176	46	11	22	334
	Dickey River (Clallam Co.)	S	Marked			3	3									6	
		W	Marked	3									3			3	9
			Unmarked													2	2
			Total	3									3			5	11
	Quillayute River	S	Marked		3	8					3					14	
		W	Marked	16								89	113	43	19	19	299
			Unmarked												13	32	45
			Total	16								89	113	43	32	51	344
	Sol Duc River	S	Marked		37	68	105	45	13	42						310	
		W	Marked	22								5	138	410	326	127	1,028
Unmarked			21									5		57	89	172	
Total			43								5	143	410	383	216	1,200	

Table 31. 2010-2011 Steelhead Sport Catch, by Area and Month (continued)

COASTAL RIVERS AND MARINE CATCH AREAS																		
System	Water	Race	Mark	2010									2011			Total		
				Apr	May	Jun	Jul	Aug	Sep	Oct	Nov	Dec	Jan	Feb	Mar			
Quillayute R. System * (cont.)	Quillayute R. System Totals	S	Marked		48	363	427	269	263	174							1,544	
			Unmarked				3											3
			Total		48	363	427	272	263	174								1,547
		W	Marked	63								862	2,057	753	442	247		4,424
			Unmarked	40										10		100	236	386
			Total	103								862	2,067	753	542	483		4,810
Quinault R. System *	Cook Creek	S	Marked							6						6		
		W	Marked								11					11		
	Quinault Lake	S	Marked								32						32	
		W	Marked									6	3	8			17	
	Quinault R, Lower (below L. Quinault, not Cook Cr.)	S	Marked			6											6	
		W	Marked												14		14	
	Quinault R, Upper (above L. Quinault)	W	Marked												17	11	28	
			Unmarked												11	23	34	
			Total												28	34	62	
	Quinault R. System Totals	S	Marked			6					38						44	
			W	Marked								17	3	8	31	11	70	
		W	Unmarked												11	23	34	
			Total									17	3	8	42	34	104	
	Waatch River *	Waatch River	W	Marked									2				2	
Willapa R. System	Willapa R, So. Fork	W	Marked									3	20	47	7	77		
			Unmarked															
	Willapa River	S	Marked						4	4							8	
		W	Marked								50	252	131	64	20		517	
Willapa R. System Totals	S	Marked						4	4							8		
	W	Marked									53	272	178	71	20	594		

Table 31. 2010-2011 Steelhead Sport Catch, by Area and Month (continued)

COASTAL RIVERS AND MARINE CATCH AREAS																
System	Water	Race	Mark	2010									2011			Total
				Apr	May	Jun	Jul	Aug	Sep	Oct	Nov	Dec	Jan	Feb	Mar	
Coastal Rivers/Streams and Marine Catch Area Totals	S	Marked		55	681	992	978	598	431							3,735
		Unmarked				3		3								6
		Total		55	681	992	981	598	434							3,741
	W	Marked	175								1,355	3,673	2,888	1,599	989	10,679
		Unmarked	65									10		149	368	592
		Total	240									1,355	3,683	2,888	1,748	1,357

Table 31. 2010-2011 Steelhead Sport Catch, by Area and Month (continued)

COLUMBIA RIVER AND TRIBUTARIES																	
System	Water	Race	Mark	2010								2011			Total		
				Apr	May	Jun	Jul	Aug	Sep	Oct	Nov	Dec	Jan	Feb		Mar	
Abernathy Cr. System	Abernathy Creek	S	Marked				25	20								45	
		W	Marked									7	42	21	42	112	
Coal Cr. System	Coal Creek (Cowlitz Co.)	W	Marked								2	7	2	2	2	15	
Columbia R. Mainstem	Columbia R 01: Buoy 10 to Tongue Pt.-Rocky Pt.	S	Marked				27	65								92	
		W	Marked	3												3	
	Columbia R 02: Tongue Pt. Rocky Pt. to Longview Br.	S	Marked		784	3,039	3,546	2,209	199	10							9,787
		W	Marked	255								19	6	21	19	149	469
	Columbia R 03: Longview Br. to I-5 Br.	S	Marked		99	296	1,964	2,253	265	36							4,913
		W	Marked	137								6	19	3	16	87	268
	Columbia R 04: I-5 Br. to Bonneville Dam	S	Marked			39	880	624	108	19							1,670
		W	Marked	19								6			3	28	56
	Columbia R 05: Bonneville to The Dalles Dam	S	Marked	5		2	658	439	51	46	39	22	22				1,284
	Columbia R 06: The Dalles to John Day Dam	S	Marked	12	12	2	118	55	80	46	41	178	118	89	10		761
Columbia R 07: John Day to McNary Dam	S	Marked	22	2	2	34	27	82	113	125	135	51	67	75		735	
Columbia R 08: McNary Dam - Hwy 395 Bridge @ Pasco	S	Marked			2	108	89	761	542	301	207	186	53	17		2,266	

Table 31. 2010-2011 Steelhead Sport Catch, by Area and Month (continued)

COLUMBIA RIVER AND TRIBUTARIES																	
System	Water	Race	Mark	2010									2011			Total	
				Apr	May	Jun	Jul	Aug	Sep	Oct	Nov	Dec	Jan	Feb	Mar		
Columbia R. Mainstem (cont.)	Columbia R 09: Hwy 395 Bridge to Priest Rapids Dam	S	Marked	80				2	723	569	429	236	161	161	354	2,715	
	Columbia R 10: Priest Rapids to Wanapum Dam	S	Marked					5	22	14	5	2	12	7	7	74	
	Columbia R 11: Wanapum to Rock Island Dam	S	Marked						14	7	2	7	2			32	
	Columbia R 12: Rock Island to Rocky Reach Dam	S	Marked						75	48	22	43	24	2	5	219	
	Columbia R 13: Rocky Reach to Wells Dam	S	Marked						58	181	135	145	89	39	137	784	
	Columbia R 14: Wells to Chief Joseph Dam	S	Marked					7	161	395	463	347	116	29	77	1,595	
	Columbia R. Mainstem Totals	S	Marked		119	897	3,382	7,335	5,775	2,599	2,026	1,562	1,322	781	447	682	26,927
		W	Marked		414							31	25	24	38	264	796
Cowlitz R. System	Blue Creek (Lewis Co.)	W	Marked									25	11		5	41	
	Coweeman River	W	Marked									9	18	14		41	
	Cowlitz R. above Cowlitz Falls Dam	S	Marked							8							8
		W	Marked								3	3	10		13		29
	Cowlitz R. below Mayfield Dam	S	Marked		498	1,050	3,551	2,493	808	473							8,873
		W	Marked		3,363							536	1,364	533	701	2,957	9,454
Cowlitz R. between Mayfield & Cowlitz Falls Dams	S	Marked				22			5							27	
	W	Marked		10							5	10	3		10	38	

Table 31. 2010-2011 Steelhead Sport Catch, by Area and Month (continued)

COLUMBIA RIVER AND TRIBUTARIES																		
System	Water	Race	Mark	2010									2011			Total		
				Apr	May	Jun	Jul	Aug	Sep	Oct	Nov	Dec	Jan	Feb	Mar			
Deep R. System (Wahkiakum)	Green River (Cowlitz Co.)	S	Marked		87	448	220	43	43	35							876	
		W	Marked								3						3	
	Lacamas Creek (Lewis Co.)	S	Marked			5	3										8	
	Tilton River	S	Marked			3					8						11	
		W	Marked										3		3		6	
	Toutle River	S	Marked			5	8										13	
	Toutle River, No. Fork	S	Marked			3	5	8	3	22								41
		W	Marked										3					3
	Toutle River, So. Fork	S	Marked			122	275	264	52	82	49							844
		W	Marked										3	3	3		5	14
	Cowlitz R. System Totals	S	Marked			710	1,791	4,076	2,591	960	573							10,701
W		Marked			3,373							553	1,392	570	715	2,985	9,588	
Deep River (Wahkiakum Co.)	S	Marked					4										4	
	W	Marked																
Elochoman R. System	Elochoman River	S	Marked			52	58	32	64	39							245	
		W	Marked									52	324	160	54	26	616	
Entiat R. System	Entiat River	S	Marked						20	26	20	15	3	1	4		89	
Germany Cr. System	Germany Creek	W	Marked										53	53	61	20	187	
Grande Ronde R. System	Grande Ronde River	S	Marked	513		3		3	47	563	306	221	97	841	720		3,314	
Grays R. System	Grays River	S	Marked						2	4							6	
		W	Marked									26	73	95	40	7	241	
	Grays River, West Fork	S	Marked							1								1
		W	Marked									37	376	44	7			464
	Grays R. System Totals	S	Marked							2	5							7
		W	Marked										63	449	139	47	7	705

Table 31. 2010-2011 Steelhead Sport Catch, by Area and Month (continued)

COLUMBIA RIVER AND TRIBUTARIES																
System	Water	Race	Mark	2010									2011			Total
				Apr	May	Jun	Jul	Aug	Sep	Oct	Nov	Dec	Jan	Feb	Mar	
Kalama R. System	Kalama River below Kalama Falls Hatchery	S	Marked	273	388	613	610	285	202							2,371
			Unmarked	3												3
		Total	276	388	613	610	285	202								2,374
		W	Marked	165							90	134	152	199	222	962
Klickitat R. System	Klickitat River above Fishway 5	S	Marked		48	79	143	68	63							401
		W	Marked							15	9					24
	Klickitat River below Fishway 5	S	Marked	183	477	290	441	299	195							1,885
			Unmarked						2							2
		Total	183	477	290	441	299	197								1,887
	W	Marked		44							90		3			137
			Unmarked											3		3
		Total	44							90		3	3			140
	Klickitat R. System Totals	S	Marked	183	525	369	584	367	258							2,286
			Unmarked						2							2
			Total	183	525	369	584	367	260							2,288
		W	Marked		44							105	9	3		
Unmarked														3		3
Total			44							105	9	3	3			164
Lewis R. System	Cedar Creek (Clark Co.)	S	Marked			5			3	3					11	
		W	Marked								2				2	
	Lewis River (below E. Fork)	S	Marked	172	96	180	263	19	3						733	
		W	Marked	2							32	52	11	9	5	111
	Lewis River, E. Fork	S	Marked	85	93	82	11	21	32						324	
		W	Marked	11							70	93	43	20		237
	Lewis River, No. Fork	S	Marked	325	1,103	3,121	2,312	624	108						7,593	
		W	Marked	45							68	398	219	5	18	753
	Lewis R. System Totals	S	Marked	582	1,292	3,388	2,586	667	146						8,661	
		W	Marked	58							172	543	273	34	23	1,103

Table 31. 2010-2011 Steelhead Sport Catch, by Area and Month (continued)

COLUMBIA RIVER AND TRIBUTARIES																
System	Water	Race	Mark	2010									2011			Total
				Apr	May	Jun	Jul	Aug	Sep	Oct	Nov	Dec	Jan	Feb	Mar	
Little White Salmon R. Sys.	Little White Salmon River & Drano Lake	S	Marked	16	41	5	803	3,750	934	106	3	16	5	8		5,687
Methow R. System	Methow River	S	Marked						471	900	255	86	46	125	441	2,324
Mill Cr. (Lewis Co.)	Mill Creek (Lewis Co.)	S	Marked			1			4	1						6
		W	Marked									2				2
Mill Cr. System (Cowlitz)	Mill Creek (Cowlitz Co.)	W	Marked											9	2	11
Okanogan R. System	Okanogan River	S	Marked							398	254	105	12	115	692	1,576
	Similkameen River	S	Marked								78	42		51	569	740
	Okanogan R. System Totals	S	Marked							398	332	147	12	166	1,261	2,316
Rock Cr. System (Skamania)	Rock Creek (Skamania Co.)	S	Marked					1								1
Salmon Cr. System (Clark)	Salmon Creek (Clark Co.)	S	Marked					1								1
		W	Marked								2	2	2			6
Skamokawa Cr. System	Skamokawa Creek	S	Marked							3						3
Snake R. Mainstem	Snake R 1: below Ice Harbor Dam	S	Marked						52	26	18	49	36	3		184
	Snake R 2: Ice Harbor to Lower Monumental Dam	S	Marked						963	766	317	592	221	109	122	3,090
		Unmarked							3		3					6
		Total							966	766	320	592	221	109	122	3,096
	Snake R 3: Lower Monumental to Little Goose Dam	S	Marked						961	543	288	551	223	299	148	3,013
Snake R 4: Little Goose to Lower Granite Dam	S	Marked						706	326	73	185	112	149	60	1,611	

Table 31. 2010-2011 Steelhead Sport Catch, by Area and Month (continued)

COLUMBIA RIVER AND TRIBUTARIES																	
System	Water	Race	Mark	2010									2011			Total	
				Apr	May	Jun	Jul	Aug	Sep	Oct	Nov	Dec	Jan	Feb	Mar		
Snake R. Mainstem (cont.)	Snake R 5: Lower Granite Dam to Interstate Bridge, Clarkston	S	Marked					5	1,842	851	463	367	247	60	26	3,861	
	Snake R 6: upstream of the Interstate Bridge, Clarkston	S	Marked					3	437	1,528	559	286	161	73		3,047	
			Unmarked							3					3		
			Total					3	437	1,531	559	286	161	73		3,050	
	Snake R. Mainstem Totals	S	Marked					8	4,961	4,040	1,718	2,030	1,000	693	356	14,806	
			Unmarked						3	3	3				9		
Total							8	4,964	4,043	1,721	2,030	1,000	693	356	14,815		
Tucannon R. System	Tucannon River	S	Marked			22	27	30	256	343	194	167	67	100	19	1,225	
Walla Walla R. System	Touchet River	S	Marked			4	4			15	69	23	31	69	76	291	
	Walla Walla River	S	Marked				11	11	214	363	161	46	31	103	31	971	
	Walla Walla R. System Totals	S	Marked			4	15	11	214	378	230	69	62	172	107	1,262	
Washougal R. System	Washougal River	S	Marked			366	618	240	15	25	3					1,267	
		W	Marked	46								118	156	98	3	3	424
	Washougal River, West Fork	S	Marked			80	74	6	9	12							181
		W	Marked									9	3	3			15
	Washougal R. System Totals	S	Marked			366	698	314	21	34	15						1,448
		W	Marked	46									127	159	101	3	3
Wenatchee R. System	Icicle Creek	S	Marked						9	2		9		2	5	27	
	Wenatchee River	S	Marked						75	93	44	42	12	47	40	353	
	Wenatchee R. System Totals	S	Marked						84	95	44	51	12	49	45	380	
White Salmon R. System	Big White Salmon River	S	Marked			138	92	446	1,589	489	53					2,807	
		W	Marked	21								13	129	31	2	4	200

Table 31. 2010-2011 Steelhead Sport Catch, by Area and Month (continued)

COLUMBIA RIVER AND TRIBUTARIES																			
System	Water	Race	Mark	2010									2011			Total			
				Apr	May	Jun	Jul	Aug	Sep	Oct	Nov	Dec	Jan	Feb	Mar				
Wind R. System	Wind River above Shipherd Falls	S	Marked		9	2											11		
	Wind River below Shipherd Falls	S	Marked	5	14		37	521	56	2			2	5			642		
	Wind R. System Totals	S	Marked	5	23	2	37	521	56	2			2	5			653		
Yakima R. System	Yakima River	S	Marked						1								1		
Columbia River and Tributary System Totals (All non-Boldt)		S	Marked	653	3,213	8,256	17,507	18,137	12,515	10,172	4,664	4,124	2,087	2,607	3,635		87,570		
			Unmarked		3				3	5	3							14	
			Total	653	3,216	8,256	17,507	18,137	12,518	10,177	4,667	4,124	2,087	2,607	3,635				87,584
		W	Marked	4,121								1,210	3,260	1,563	1,185	3,605		14,944	
			Unmarked												3				3
			Total	4,121										1,210	3,260	1,563	1,188	3,605	14,947

Table 31. 2010-2011 Steelhead Sport Catch, by Area and Month (continued)

PUGET SOUND AND STRAIT OF JUAN DE FUCA RIVER SYSTEMS AND MARINE CATCH AREAS																
System	Water	Race	Mark	2010									2011			Total
				Apr	May	Jun	Jul	Aug	Sep	Oct	Nov	Dec	Jan	Feb	Mar	
Marine Water *	Area 5: W Juan de Fuca	S	Marked				8	4	4							16
		W	Marked								10	3				13
	Area 6: E Juan de Fuca	S	Marked			2										2
		W	Marked										3			3
	Area 9: Admiralty Inlet	S	Marked		4		10	6	4	2						26
		W	Marked		7							3	50	17	7	3
	Marine Water Totals	S	Marked		4		20	10	8	2						44
W		Marked		7							13	53	20	7	3	103
Clallam R. System *	Clallam River	W	Marked									28	16		44	
Deep Cr. System (Clallam) *	Deep Creek (Clallam Co.)	W	Marked										2		2	
Dungeness R. System *	Dungeness River	W	Marked								14	5	7		26	
Elwha R. System *	Elwha River	S	Marked							8					8	
		W	Marked								81	55	26		162	
Green-Duwamish R. Sys *	Green (Duwamish River) (King Co.)	S	Marked		65	43	37	52	30						227	
		W	Marked								45	199	58	2	304	
	Soos Creek	S	Marked		4										4	
	Green-Duwamish R. Sys Totals	S	Marked		65	47	37	52	30						231	
		W	Marked								45	199	58	2	304	
Hoko R. System *	Hoko River	W	Marked								47	54	14	16	131	
Lyre R. System *	Lyre River	S	Marked		12	12	33	43	4						104	
		W	Marked								68	106	20	13	207	
Morse Cr. System *	Morse Creek (Clallam Co.)	W	Marked									9	5		14	

Table 31. 2010-2011 Steelhead Sport Catch, by Area and Month (continued)

PUGET SOUND AND STRAIT OF JUAN DE FUCA RIVER SYSTEMS AND MARINE CATCH AREAS																	
System	Water	Race	Mark	2010									2011			Total	
				Apr	May	Jun	Jul	Aug	Sep	Oct	Nov	Dec	Jan	Feb	Mar		
Nooksack R. System *	Nooksack River, No. Fork	S	Marked						4							4	
		W	Marked									37	26	7		70	
	Nooksack River, So. Fork	W	Marked									12	5			17	
	Nooksack River, below North Fork	W	Marked									14	5			19	
	Nooksack R. System Totals	S	Marked							4							4
		W	Marked										63	36	7		106
Puyallup R. System *	Carbon River	W	Marked									7				7	
	Puyallup River	S	Marked						11							11	
		W	Marked										5			5	
	White (Stuck) River	S	Marked						8								8
		W	Marked										16				16
	Puyallup R. System Totals	S	Marked						8	11							19
W		Marked										28				28	
Pysht R. System *	Pysht River	W	Marked									12	7			19	
Salt Cr. System *	Salt Creek (Clallam Co.)	W	Marked										2			2	
Samish R. System *	Samish River	W	Marked											2		2	
Sekiu R. System *	Sekiu River	W	Marked									14	2	2		18	
Skagit R. System *	Cascade River	S	Marked			2				36	26					64	
		W	Marked									142	368	63	9	582	
	Sauk River	S	Marked			2	2	3	2	2						11	
	Skagit River	S	Marked						3	5	7						15
		W	Marked										42	39	12		93
	Skagit R. System Totals	S	Marked			4	2	6	43	35							90
W		Marked										184	407	75	9	675	

Table 31. 2010-2011 Steelhead Sport Catch, by Area and Month (continued)

PUGET SOUND AND STRAIT OF JUAN DE FUCA RIVER SYSTEMS AND MARINE CATCH AREAS																
System	Water	Race	Mark	2010								2011			Total	
				Apr	May	Jun	Jul	Aug	Sep	Oct	Nov	Dec	Jan	Feb		Mar
Snohomish R. System *	Pilchuck River (Snohomish System)	W	Marked										49	19		68
	Raging River	S	Marked			6			9	3						18
		W	Marked								5	12		2		19
	Skykomish River	S	Marked			1,022	542	90	111	76						1,841
			Unmarked						3							3
		Total			1,022	542	93	111	76							1,844
	W	Marked								167	889		282	49	1,387	
	Skykomish River, No. Fork	S	Marked				6	12	12	12						42
			Unmarked			3										3
			Total			3	6	12	12	12						45
		W	Marked								5	19		2	26	
	Skykomish River, So. Fork	S	Marked			3		6	3	3						15
		W	Marked									7		2	9	
	Snohomish River	S	Marked			236	20		6	6						268
		W	Marked								63	58		25	5	151
	Snoqualmie River	S	Marked			166	111	76	6	9						368
			W	Marked							58	429		63	2	552
		Unmarked										2			2	
		Total									58	431		63	2	554
	Sultan River	S	Marked			3		3	3	6						15
W		Marked									2	2	2		6	
Tokul Creek	W	Marked										74	183	42	299	
Tolt River	S	Marked					6	3							9	
	W	Marked										2	5		7	
Wallace River	S	Marked						3	12						15	
	W	Marked									14	79	35	7	135	

Table 31. 2010-2011 Steelhead Sport Catch, by Area and Month (continued)

PUGET SOUND AND STRAIT OF JUAN DE FUCA RIVER SYSTEMS AND MARINE CATCH AREAS																	
System	Water	Race	Mark	2010						2011			Total				
				Apr	May	Jun	Jul	Aug	Sep	Oct	Nov	Dec		Jan	Feb	Mar	
Snohomish R. System * (cont.)	Snohomish R. System Totals	S	Marked			1,436	679	193	156	127						2,591	
			Unmarked			3		3								6	
			Total			1,439	679	196	156	127						2,597	
		W	Marked									314	1,620	620	100	5	2,659
			Unmarked										2				2
			Total									314	1,622	620	100	5	2,661
Stillaguamish R. System *	Canyon Creek	S	Marked			3				3					6		
		W	Marked									5			5		
	Stillaguamish R, No. Fork	S	Marked			12		15	6	12					45		
		W	Marked								17	68	15		100		
	Stillaguamish R, So. Fork	S	Marked							3				3			
	Stillaguamish River	S	Marked					3		3				6			
	Stillaguamish R. System Totals	S	Marked			15		18	6	21					60		
		W	Marked								17	73	15		105		
Whatcom Cr. System *	Whatcom Creek	W	Marked									21	2	23			
Puget Sound, Strait of Juan de Fuca River Systems and Marine Catch Area Totals (All are Boldt Case Areas)		S	Marked		4	1,532	760	305	319	231					3,151		
			Unmarked			3		3							6		
			Total			4	1,535	760	308	319	231					3,157	
		W	Marked		7							783	2,726	946	160	8	4,630
			Unmarked										2			2	
			Total			7						783	2,728	946	160	8	4,632

Table 31. 2010-2011 Steelhead Sport Catch, by Area and Month (continued)

UNKNOWN AREA																	
System	Water	Race	Mark	2010									2011			Total	
				Apr	May	Jun	Jul	Aug	Sep	Oct	Nov	Dec	Jan	Feb	Mar		
Total Unknown		S	Marked		19	62	220	182	201	143						827	
		W	Marked	115							37	210	140	74	74	650	
			Unmarked													8	8
			Total	115								37	210	140	74	82	658

Table 31. 2010-2011 Steelhead Sport Catch, by Area and Month (continued)

STATEWIDE STEELHEAD HARVEST SUMMARY, 2010-2011																
Treaty Status	Race	Marked / Unmarked	2010									2011			Total	
			Apr	May	Jun	Jul	Aug	Sep	Oct	Nov	Dec	Jan	Feb	Mar		
Non-Boldt Case Areas	S	Marked	653	3,217	8,298	17,552	18,273	12,613	10,235	4,664	4,124	2,087	2,607	3,635	87,958	
		Unmarked		3				3	5	3					14	
		Total	653	3,220	8,298	17,552	18,273	12,616	10,240	4,667	4,124	2,087	2,607	3,635	87,972	
	W	Marked	4,125								1,331	3,722	1,894	1,309	3,635	16,016
		Unmarked												3		3
		Total	4,125								1,331	3,722	1,894	1,312	3,635	16,019
Boldt Case Areas	S	Marked		55	2,171	1,707	1,147	819	599						6,498	
		Unmarked			3		6		3						12	
		Total		55	2,174	1,707	1,153	819	602						6,510	
	W	Marked	178							2,017	5,937	3,503	1,635	967	14,237	
		Unmarked	65								12		149	368	594	
		Total	243							2,017	5,949	3,503	1,784	1,335	14,831	
Unknown Areas	S	Marked		19	62	220	182	201	143						827	
		Unmarked														
		Total		19	62	220	182	201	143						827	
	W	Marked	115								37	210	140	74	74	650
		Unmarked													8	8
		Total	115								37	210	140	74	82	658
TOTAL	S	Marked	653	3,291	10,531	19,479	19,602	13,633	10,977	4,664	4,124	2,087	2,607	3,635	95,283	
		Unmarked		3	3		6	3	8	3					26	
		Total	653	3,294	10,534	19,479	19,608	13,636	10,985	4,667	4,124	2,087	2,607	3,635	95,309	
	W	Marked	4,418								3,385	9,869	5,537	3,018	4,676	30,903
		Unmarked	65									12		152	376	605
		Total	4,483								3,385	9,881	5,537	3,170	5,052	31,508

Table 32. 2010-2011 Washington Sport Steelhead Fishing, by Residence

County of Residence	Number of Catch Record Cards	Population by County	% Catch Record Card Holders	Total Steelhead	Average Catch per Card
Adams	1,416	18,728	7.6	422	0.30
Asotin	2,317	21,623	10.7	1,445	0.62
Benton	17,185	175,177	9.8	6,347	0.37
Chelan	7,514	72,453	10.4	1,407	0.19
Clallam	10,466	71,404	14.7	2,718	0.26
Clark	40,630	425,363	9.6	13,295	0.33
Columbia	595	4,078	14.6	823	1.38
Cowlitz	20,094	102,410	19.6	14,798	0.74
Douglas	3,452	38,431	9.0	940	0.27
Ferry	350	7,551	4.6	252	0.72
Franklin	6,387	78,163	8.2	2,562	0.40
Garfield	354	2,266	15.6	141	0.40
Grant	4,855	89,120	5.4	851	0.18
Grays Harbor	12,131	72,797	16.7	2,985	0.25
Island	10,983	78,506	14.0	252	0.02
Jefferson	4,290	29,872	14.4	200	0.05
King	95,476	1,931,249	4.9	9,888	0.10
Kitsap	22,382	251,133	8.9	1,577	0.07
Kittitas	2,822	40,915	6.9	296	0.10
Klickitat	3,116	20,318	15.3	1,437	0.46
Lewis	10,839	75,455	14.4	4,859	0.45
Lincoln	771	10,570	7.3	134	0.17
Mason	7,112	60,699	11.7	837	0.12
Okanogan	4,110	41,120	10.0	2,985	0.73
Pacific	4,296	20,920	20.5	866	0.20
Pend Oreille	516	13,001	4.0	52	0.10
Pierce	64,102	795,225	8.1	7,207	0.11
San Juan	1,867	15,769	11.8	15	0.01
Skagit	16,891	116,901	14.4	763	0.05
Skamania	1,445	11,066	13.1	778	0.54
Snohomish	59,663	713,335	8.4	6,518	0.11
Spokane	16,955	471,221	3.6	6,007	0.35
Stevens	1,579	43,531	3.6	326	0.21
Thurston	23,543	252,264	9.3	4,570	0.19
Wahkiakum	1,241	3,978	31.2	2,793	2.25
Walla Walla	5,087	58,781	8.7	3,533	0.69
Whatcom	17,769	201,140	8.8	1,015	0.06
Whitman	2,145	44,776	4.8	1,341	0.63
Yakima	17,158	243,231	7.1	8,088	0.47
Unknown WA	1,374			681	0.50
Washington Total	525,278	6,724,540	7.8	116,004	0.22
Other State Total	47,583			10,784	0.23
Canada	1,633			15	0.01
Other	477			15	0.03
Grand Total	574,971			126,818	0.22

Source: Table 1: Annual Estimates of the Resident Population for Counties of Washington: April 1, 2010 to July 1, 2011 (CO-EST2011-01-53). Source: Population Division, U.S. Census Bureau. Release Date: April 2012.

Table 33. 2010-2011 Frequency Distribution of Estimated Steelhead Catch Record Cards and Catch

#Steelhead per Catch Record Card	Number of Cards	Cumulative Number of Cards	Percent Cards	Cumulative Percent Cards	Total Catch	Cumulative Total Catch	Percent Catch	Cumulative Percent Catch
0	538,825	538,825	93.7%	93.7%	0	0	0.0%	0.0%
1	15,232	554,057	2.6%	96.4%	15,232	15,232	12.0%	12.0%
2	7,619	561,676	1.3%	97.7%	15,238	30,470	12.0%	24.0%
3	3,687	565,363	0.6%	98.3%	11,061	41,531	8.7%	32.8%
4	2,266	567,629	0.4%	98.7%	9,064	50,595	7.2%	39.9%
5	1,385	569,014	0.2%	99.0%	6,925	57,520	5.5%	45.4%
6	955	569,969	0.2%	99.1%	5,730	63,250	4.5%	49.9%
7	837	570,806	0.1%	99.3%	5,859	69,109	4.6%	54.5%
8	726	571,532	0.1%	99.4%	5,808	74,917	4.6%	59.1%
9	452	571,984	0.1%	99.5%	4,068	78,985	3.2%	62.3%
10	437	572,421	0.1%	99.6%	4,370	83,355	3.5%	65.7%
11	281	572,702	0.0%	99.6%	3,091	86,446	2.4%	68.2%
12	333	573,035	0.1%	99.7%	3,996	90,442	3.2%	71.3%
13	289	573,324	0.1%	99.7%	3,757	94,199	3.0%	74.3%
14	267	573,591	0.0%	99.8%	3,738	97,937	3.0%	77.2%
15	200	573,791	0.0%	99.8%	3,000	100,937	2.4%	79.6%
16	163	573,954	0.0%	99.8%	2,608	103,545	2.1%	81.7%
17	126	574,080	0.0%	99.8%	2,142	105,687	1.7%	83.4%
18	118	574,198	0.0%	99.9%	2,124	107,811	1.7%	85.0%
19	126	574,324	0.0%	99.9%	2,394	110,205	1.9%	86.9%
20	81	574,405	0.0%	99.9%	1,620	111,825	1.3%	88.2%
21	44	574,449	0.0%	99.9%	924	112,749	0.7%	88.9%
22	67	574,516	0.0%	99.9%	1,474	114,223	1.2%	90.1%
23	15	574,531	0.0%	99.9%	345	114,568	0.3%	90.4%
24	52	574,583	0.0%	99.9%	1,248	115,816	1.0%	91.3%
25	59	574,642	0.0%	99.9%	1,475	117,291	1.2%	92.5%
26	30	574,672	0.0%	99.9%	780	118,071	0.6%	93.1%
27	30	574,702	0.0%	100.0%	810	118,881	0.6%	93.8%
28	37	574,739	0.0%	100.0%	1,036	119,917	0.8%	94.6%
29	30	574,769	0.0%	100.0%	870	120,787	0.7%	95.3%
30	170	574,939	0.0%	100.0%	5,100	125,887	4.0%	99.3%
31	30	574,969	0.0%	100.0%	930	126,817	0.7%	100.0%
Total	574,969		100.0%		126,817		100.0%	

Table 34. 2010-2011 Sport Steelhead Inventory of Catch Record Cards Received

Response Type	With Catch		No catch		Total Cards & Letters	Number of Steelhead			Catch per Card		
	Catch Records	Reminder Letters	Catch Records	Reminder Letters		Catch Records	Reminder Letters	Total	Catch Records	Reminder Letters	Total
Prior to reminder	270		5,533		5,803	695		695	0.12		0.12
After reminder postcard	3,606		39,261		42,867	12,929		12,929	0.30		0.30
After 1st reminder letter	622	334	3,892	24,942	29,790	2,051	1,115	3,166	0.45	0.04	0.11
From license dealer	52		865		917	331		331	0.36		0.36
Total	4,550	334	49,551	24,942	79,377	16,006	1,115	17,121	0.30	0.04	0.22

Marine Fish

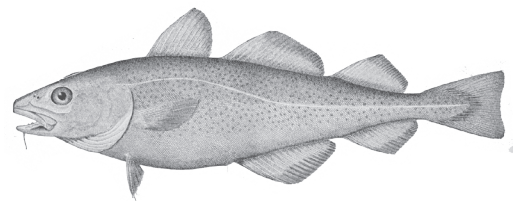
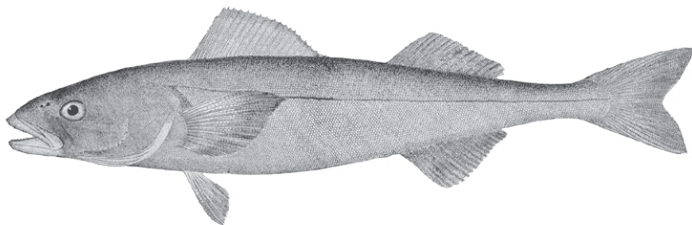
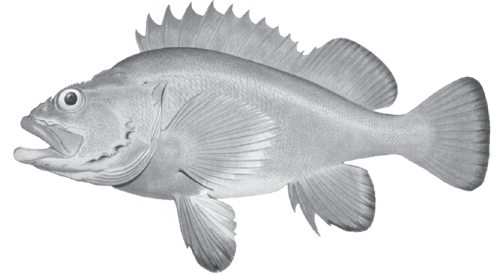
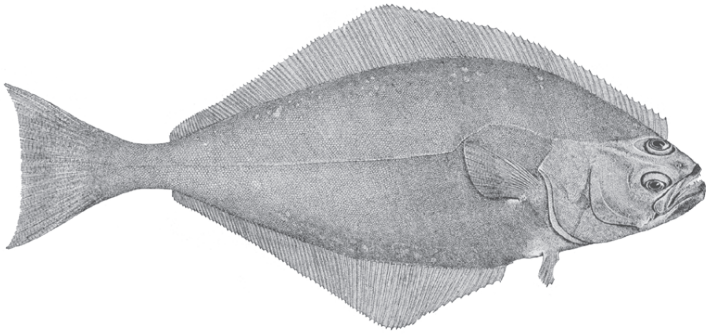


Table 35. 2010-2011 Coastal Bottomfish Catch

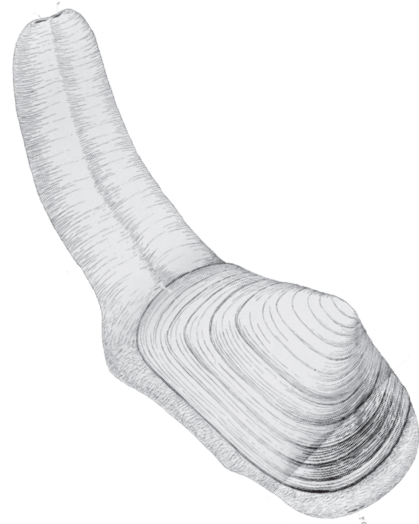
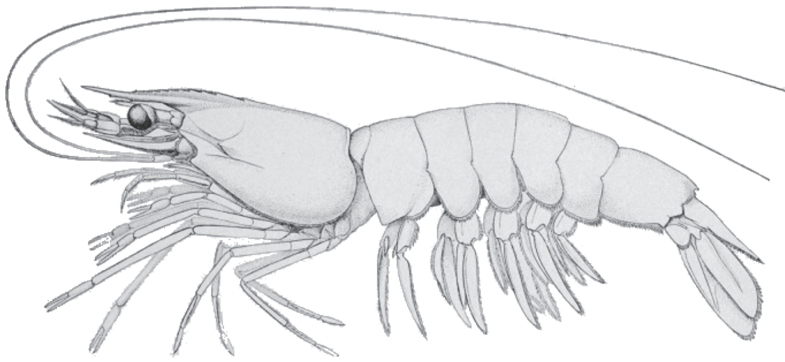
Species	Catch Area					Total
	Area 1 Ilwaco	Area 2 Westport	Area 3 La Push	Area 4 Neah Bay (Ocean)	Area 4B Neah Bay (Strait)	
Black Rockfish	9,003	84,927	23,330	39,490	22,701	179,451
Blue Rockfish	6	288	770	1,560	347	2,971
Yellowtail Rockfish	419	32,224	1,469	1,041	216	35,369
China Rockfish	21	176	332	3,004	215	3,748
Quillback Rockfish		436	129	566	258	1,389
Copper Rockfish	9	83	84	697	254	1,127
Canary Rockfish			8	96	43	147
Yelloweye Rockfish				21	16	37
Tiger Rockfish	1	17	16	64	57	155
Vermillion Rockfish	2		14	327	39	382
Boccaccio	2	4	173	42	2	223
Other Rockfish	41	22	4	2		69
Lingcod	490	11,604	6,047	5,462	2,630	26,233
Kelp Greenling	588	581	558	2,257	1,978	5,962
Pacific Cod	4	25	5	20	41	95
Cod (general)	9	42		8	3	62
Cabazon	299	152	441	1,563	616	3,071
Flatfish	38	182	4	69	416	709
Surf Perch	57	6			14	77
Sharks and Skates		586	4	9	5	604
Miscellaneous	10,499	23,823	5,179	1,668	579	41,748

Table 36. Coastal Washington Recreational Pacific Halibut Catch - 1990-2010

Year	South Coast Catch Areas 1-2	North Coast Catch Areas 3-4
1990	392	4,958
1991	433	4,823
1992	1,740	6,870
1993	539	5,009
1994	651	2,876
1995	884	4,224
1996	877	4,431
1997	1,455	5,996
1998	2,940	6,127
1999	2,126	4,773
2000	2,341	4,286
2001	2,365	5,752
2002	2,129	5,219
2003	2,809	5,576
2004	3,901	5,627
2005	3,049	5,575
2006	3,069	4,600
2007	2,551	5,504
2008	3,045	4,415
2009	2,430	4,871
2010	2,685	4,524

Table 37. 2010 Sport Bottomfish Catch by Boat-Based Anglers in Puget Sound

Species	5	6	7	8-1	8-2	9	10	11	12	13	Puget Sound Total
Pacific Halibut	1,221	2,118	122			95					3,556
Starry Flounder	28	6	323		57		222	11		53	700
Soles	45	2	155		1,556	821	2,948	3,070		1,522	10,119
Sanddabs		3	227	2	8,798	5,395	11,039	5,694		4,053	35,211
Misc. Flatfish	28	24	457		8,384	3,979	5,514	5,514		1,291	25,191
Sablefish	3										3
Lingcod	453	295	1,759	731	195	891	269	135		259	4,987
Greenlings	1,183	1,314	11,890	681	9	258	41	48		59	15,483
Copper Rockfish	86	5	53	80	450	12	8	49			743
Quillback Rockfish	59	6			4		4	12		131	216
Brown Rockfish							22	27			49
Black Rockfish	3,319	184		69	19		33				3,624
Yellowtail Rockfish					4						4
Canary Rockfish	2										2
China Rockfish	7										7
Other Rockfishes			440		11	67	6	22			546
Pacific Cod	437	14						4			455
Pacific Hake	14										14
Cabezon	84	13	801	12	8	309	19	20		47	1,313
Other Sculpins	3	33		62		178	224	349	273		262
Perches				2	103	387					492
Spiny Dogfish	3	2	352		134	121	284	366		30	1,292
Octopus	2										2
Total	6,977	4,019	16,579	1,639	19,732	12,513	20,633	15,321	273	7,445	104,271



Shellfish

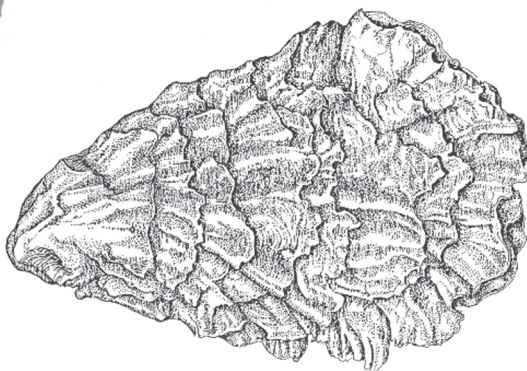
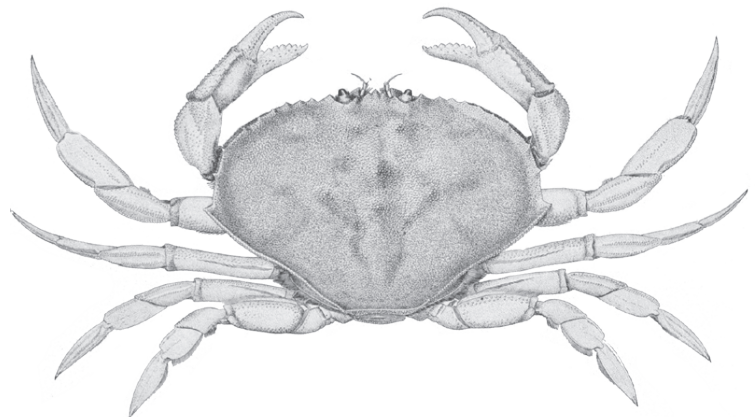


Table 38. 2010-2011 Seasonal Summary of Sport Razor Clam Digging on Ocean Beaches

Location	Fall 2010			Spring 2011		
	Digger Trips	Clams Per Trip	Number of Clams	Digger Trips	Clams Per Trip	Number of Clams
Long Beach	38,132	12.7	485,305	49,285	13.7	676,646
Twin Harbors	34,892	11.8	411,586	31,674	12.2	386,090
Copalis	32,406	12.5	406,194	18,127	14.2	257,968
Mocrocks	16,990	13.4	228,192	20,759	14.1	292,560
Kalaloch	2,163	6.6	14,345			
Total	124,583	12.4	1,545,622	119,845	13.5	1,613,264

Table 39. 2010 Clam and Oyster Recreational Use and Harvest Estimates from Intertidal Areas East Of Dungeness Spit

Marine Areas	Beach Name	User Trips	Pounds of Clams Harvested								Number of Oysters
			Manila	Littleneck	Butter	Cockle	Softshell	Horse	Geoduck	Total	
6	Sequim Bay SP	2,535	214	4,316	399	694	55	567		6,245	25,528
7	Birch Bay SP	5,327	901	6,941	15,807	1,154	123	3,622	19	28,566	2,591
8-1	West Penn Cove	11,061	11	1,326	66,598	4,069	3	2,075		74,081	42,895
9	Fort Flagler SP	2,924	15	5,587	11,452	200	38	2,331	205	19,827	233
	Oak Bay CP	1,558	676	552	4,961	383	10	1,598		8,180	1,438
	P. T. Ship Canal East	1,155	48	501	6,278	493	2	1,420	8	8,750	8
	S Indian Island CP	2,740	2,910	1,193	3,936	409	55	1,221	237	9,963	185
12	Shine Tidelands SP	4,589	2,801	1,930	14,465	2,361	47	4,782	358	26,743	14,016
	Wolfe Prop SP	3,589	6,883	650	911	208	32	3,374		12,058	22,991
	Dabob Broad Spit	311	618	6		1		17	26	668	2,274
	E Dabob	126	325	4						329	1,034
	Ouilcene Tidelands	2,566	4,442				1			4,443	14,544
	S. Zelached Point	61		8	31	11		89		138	915
	Toandos Pen SP	480		92	1,507	60		263		1,922	5,720
	Dosewallips SP App.	10,055	16,418	725	10	57	100		2,352	19,661	117,340
	Kitsap Memorial SP	2,353	3	882	3,667	3,119	30	3,102	144	10,947	28,850
	Pt. Whitney	4,043	4,469	144	211	53	2			4,879	47,359
	Pt. Whitney Lagoon	1,222	2,060				1			2,060	1,253
	Eagle Creek	594	121	66	4	242	5	32	19	489	9,483
	DNR-44A W Dewatto	1,252	519	70	92	62	1	12		756	20,015
	Scenic Beach SP	506	2	112	25	615				754	7,309
	Potlatch West SP-DNR	12,154	8,368	4,863	10,381	14,320	217	393		38,542	110,444
	Belfair SP	467	94				6			100	6,874
	Rendsland	550	240	49	1,802	19	6	24		2,140	7,586
	Duckabush	3,550	7,457	399	1,173	564	58	527		10,178	25,260
	Triton Cove Tidelands	1,734	1,843	145	351	348	8			2,695	15,716
	Lilliwaup SP	2,979	838	696	2,702	5,475		1,223		10,934	27,495
Twanoh SP	5,552	5,844	23	24	145	29			6,066	72,660	
13	North Bay	19,258	39,382	2,127	25	73	39	285		41,932	122,435
	Frye Cove CP	694	1,048	597		17	18			1,679	11,101
	Hope Island SP	853	81	144	5,214	3	12	737	1,857	8,049	902
	Oakland Bay Ch + Flats	169	279		3					282	1,250
	Oakland Bay Ogg	762	1,262	2	14					1,277	5,645
Total		107,769	110,173	34,148	152,043	35,153	900	27,694	5,224	365,335	773,347

Table 40. 2010 Hood Canal Sport Spot Shrimp Fishery

Area	Date	Pots Fished	Pounds	CPUE (lbs. per pot)
12	May - June (4 days)	18,271	83,381	4.56
Total		18,271	83,381	4.56

Table 41. 2010 Puget Sound Sport Spot Shrimp Fishery

Area	Date	Pots Fished	Pounds	CPUE (lbs. per pot)
6	May - July	1,462	3,417	2.34
7	May	5,313	15,345	2.89
8-1 & 8-2	May	2,445	11,881	4.86
9	May	891	3,270	3.67
10	May	1,346	5,733	4.26
11	May	439	538	1.23
13	May	n/a	n/a	
Total		10,434	40,184	3.38

Table 42. 2010-2011 Sport Dungeness Crab Catch (all gear types)

Marine Area and location		Summer Season (lb. of crab)	Fall/Winter Season (lb. of crab)
4	Neah Bay		
5	Sekiu/Pillar Point		
	Total	7,747	2,497
6	Port Angeles Harbor, Dungeness & Sequim Bays, Discovery Bay		
	Total	82,534	14,851
7	Gulf of Georgia, North of San Juan Islands, Bellingham Bay, Samish Bay, San Juan Islands, Anacortes		
	Total	517,873	40,985
8-1	Skagit Bay, North Saratoga Passage, Holmes Harbor		
	Total	287,761	206
8-2	South Saratoga Passage, Port Susan, Port Gardner		
	Total	297,515	49
9¹	Admiralty Inlet, Port Townsend Bay, Useless Bay		
	Total	78,014	14,693
10	Seattle/Kingston, Port Orchard		
	Total	84,454	34,645
11	Colvos Pass, East Pass		
	Total	85,818	1,024
13	South Puget Sound		
	Total	83,005	35,729
12, 9²	Port Ludlow/Port Gamble, Upper Hood Canal, Central Hood Canal, Lower Hood Canal		
	Total	150,569	34,891
Total		1,675,290	179,570

¹ Excluding all waters of Marine Area 9 south of a line from Foulweather Bluff to Olele Point.

² Including all waters of Marine Area 9 south of a line from Foulweather Bluff to Olele Point.



This program receives Federal financial assistance from the U.S. Fish and Wildlife Service Title VI of the Civil Rights Act of 1964, Section 504 of the Rehabilitation Act of 1973, Title II of the Americans with Disabilities Act of 1990, the Age Discrimination Act of 1975, and Title IX of the Education Amendments of 1972. The U.S. Department of the Interior and its bureaus prohibit discrimination on the bases of race, color, national origin, age, disability and sex (in educational programs). If you believe that you have been discriminated against in any program, activity or facility, please write to:

U.S. Fish and Wildlife Service
Civil Rights Coordinator for Public Access
4401 N. Fairfax Drive, Mail Stop: WSFR-4020
Arlington, VA 22203