

**2022**

ERIC HOLMAN, District Wildlife  
Biologist

NICHOLLE STEPHENS, Assistant  
District Wildlife Biologist

MONIQUE FERRIS, Private Lands  
Access Program Biologist



Washington  
Department of  
**FISH and  
WILDLIFE**



Duck Hunting in District 10, submitted by Elliot Johnson (WDFW)

## **District 10 Hunting Prospects**

Lewis, Cowlitz, and Wahkiakum counties

## TABLE OF CONTENTS

DISTRICT 10 GENERAL OVERVIEW .....	2
INDIVIDUAL GAME MANAGEMENT UNIT SPECIFICS.....	3
ELK.....	177
ELK POPULATION INFORMATION.....	188
TREPONEME-ASSOCIATED HOOF DISEASE OF ELK.....	211
DEER .....	244
BEAR .....	288
COUGAR .....	300
MOUNTAIN GOAT .....	311
PHEASANT .....	333
FOREST GROUSE.....	344
WATERFOWL.....	366
DUCK HUNTING .....	366
GOOSE HUNTING.....	388
PUBLIC LAND RESOURCES.....	39
PRIVATE LAND RESOURCES.....	40
PRIVATE FORESTLANDS.....	42

## DISTRICT 10 GENERAL OVERVIEW

District 10 is in southwest Washington and includes Lewis, Cowlitz, and Wahkiakum counties. Game management units (GMUs) in this district include 501 (Lincoln), 503 (Randle), 504 (Stella), 505 (Mossyrock), 506 (Willapa Hills), 510 (Stormking), 513 (South Rainier), 516 (Packwood), 520 (Winston), 522 (Loo-Wit), 524 (Margaret), 530 (Ryderwood), 550 (Coweeman), and 556 (Toutle). The landscape of this wide area ranges from tidally influenced Columbia River shorelines to Cascade peaks. In the “Individual Game Management Unit (GMU) Specifics” section of this document you will find details for each GMU including size, the approximate percentage of public land, primary landowners, and access roads.

A high percentage of this district is privately-owned. Private timber companies often limit public access to their lands or sell hunting access permits to a limited number of participants. When planning your hunt, it’s important to understand the recreational access policies of individual timber companies. You can typically find recreational access information on websites or by calling access hotlines. A list of recreational access websites and hotlines maintained by private industrial timber companies is included at the end of this document.

Weyerhaeuser owns a significant amount of land in District 10. Major changes to hunting access in 2015 included a requirement that hunters buy an access permit to hunt on most of Weyerhaeuser land, including the Saint Helens Tree Farm (GMUs 550, 520, 524, and 556). Motorized access permits are being sold for between \$250 and \$400, while non-motorized access permits are between \$75 and \$125. Visit their [website](#) for details. Weyerhaeuser does allow free public access on their lands enrolled in the Washington Department of Fish and Wildlife (WDFW) Private Lands Access Program. To locate those lands, visit the [Private Lands Hunting Access webpage](#).

Other industrial timber company lands are generally open to public hunting without an access fee, but vehicle access may be limited. Major industrial forest landowners in District 10 include Hancock Forest Management, Port Blakely, Sierra Pacific, Green Diamond (permit fee access), Rayonier (very limited access), and Pope Resources/Olympic Resource Management. Access to these lands may be restricted in August, September, and sometimes October due to fire danger. You can find more information about hunting opportunities on private land on the [WDFW website](#), on page 96 of the [Big Game pamphlet](#), or by using the [Mapping Tool](#).

Public land in the district includes WDFW’s Cowlitz and Mount St. Helens Wildlife Areas. You can find details about the [Wildlife Areas](#) on the WDFW website. Additionally, there is the [Gifford Pinchot National Forest](#) in eastern Lewis and Cowlitz counties, as well as state land managed by the Department of Natural Resources (DNR) scattered throughout all three counties. Contact this email for more information: [pacific-cascade.region@dnr.wa.gov](mailto:pacific-cascade.region@dnr.wa.gov). These state and federal lands are open for public access.

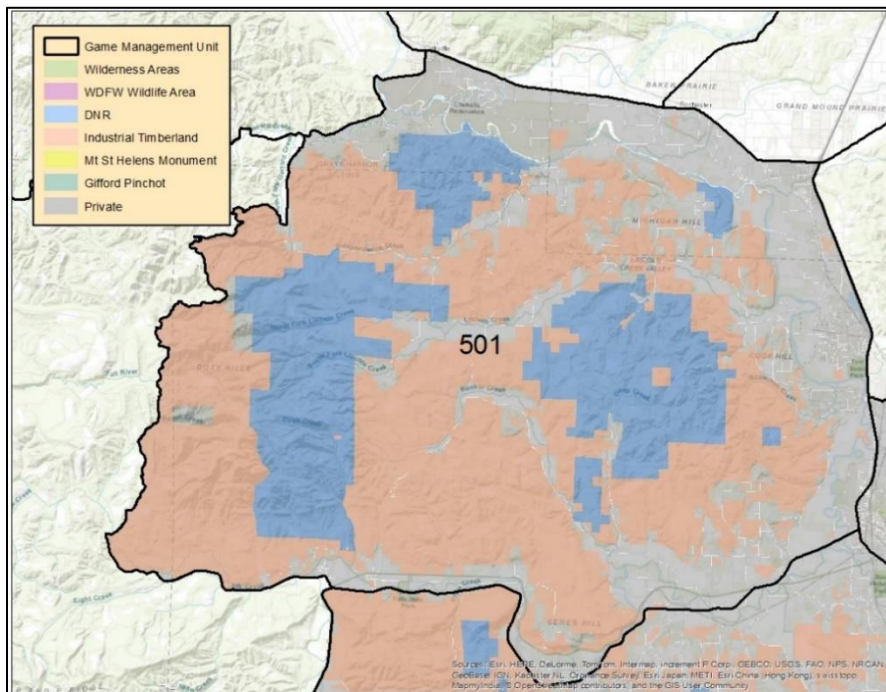
For hunters interested in using e-bikes, note that they are typically considered motorized vehicles allowed only on roads and trails open to other motorized use (local regulations may vary), Hunters should check with each landowner, public or private, to ensure they are allowed. Please see the [WDFW](#) and [DNR](#) E-bike policy planning webpages for more information.

Visitors to WDFW- and DNR-managed lands with a parking placard for people with disabilities can use Class 1 and Class 2 e-bikes on all non-motorized natural surface trails and closed roads where bicycles are allowed until June 30, 2023, or until new legislation is enacted.

## INDIVIDUAL GAME MANAGEMENT UNIT SPECIFICS

### GAME MANAGEMENT UNIT 501 -LINCOLN

GMU 501 is located in the northwestern corner of WDFW Region 5, west of Interstate 5 (I-5), near Chehalis and Centralia, and lies predominantly in Lewis County. The GMU is a mix of private agricultural lands and rural homes in the lower elevations and closer to Interstate 5 but transitions quickly into forestlands as elevations increase. The predominant geographic features of GMU 501 are the Chehalis River, Interstate 5, and the Doty Hills. The unit is generally very good for black-tails and poor for elk.



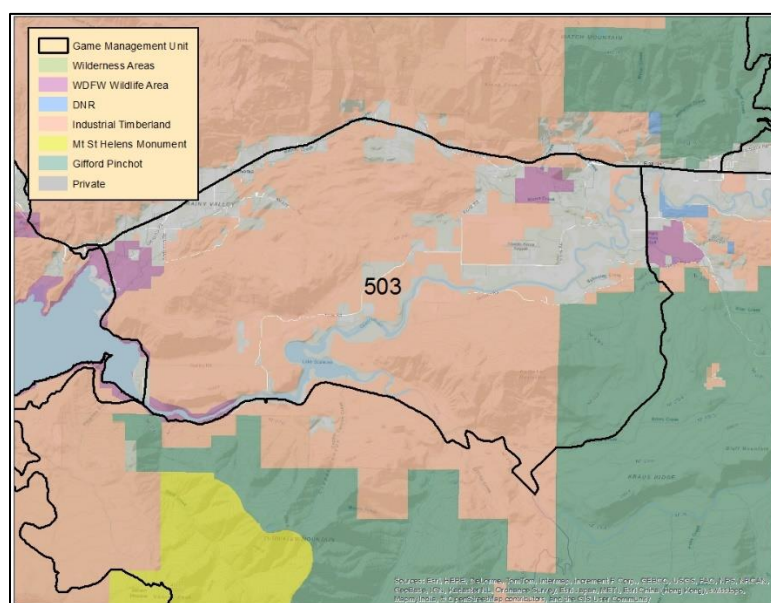
<b>Square Miles</b>	232
<b>Percent Public Land</b>	~35%
<b>Percent Industrial Forestland</b>	~45%
<b>Percent Urban/Sub-Urban</b>	~10%

<b>Primary Landowners</b>	Weyerhaeuser
	DNR
<b>Habitat / Terrain</b>	Small Agricultural Owners
	State and Industrial Forestlands
	Floodplain / Private Agricultural and Residential
	Mix of Flatter Agricultural Areas and Steeper Hills

<b>Primary Access Points</b>	State Route 6
	Lincoln Creek Road
<b>Small Game / Waterfowl</b>	Average for ruffed grouse, very good for waterfowl

**GAME MANAGEMENT UNIT 503 -RANDLE**

GMU 503 is located east of I-5, near Randle, east of Riffe Lake, South of State Route 12 and lies entirely in Lewis County. The GMU is a mix of private agricultural lands and rural homes in the lower elevations, private industrial forestlands, and U.S. Forest Service lands. The Kiona Creek and Kosmos Units of the Cowlitz Wildlife Area also lie within this GMU. The predominant geographic features of GMU 503 are the Cowlitz River, Cispus River, USFS (United States Forest Service) Road 25, and State Route 12. The unit is generally moderately productive for black-tails and elk though its small size and significant amount of private property make access challenging.

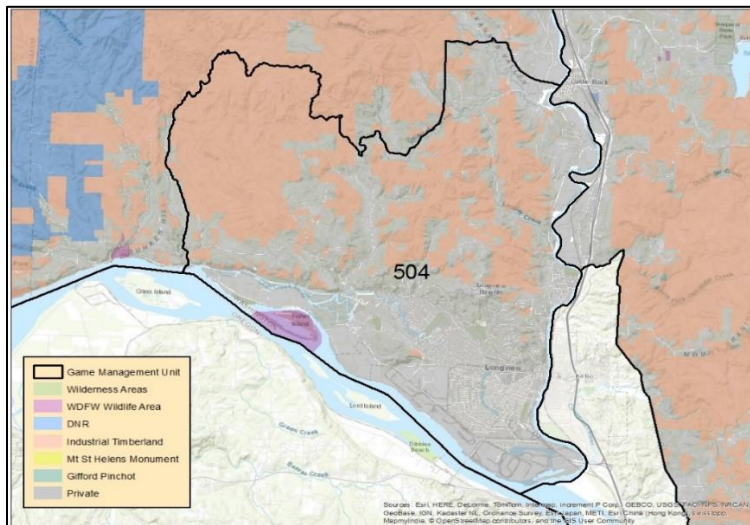


<b>Square Miles</b>	56
<b>Percent Public Land</b>	~20%
<b>Percent Industrial Forestland</b>	~50%
<b>Percent Urban/Sub-Urban</b>	~0%

<b>Primary Landowners</b>	Small Agricultural Owners
	U.S. Forest Service
	Private Industrial Forestlands
<b>Habitat / Terrain</b>	Floodplain / Private Agricultural and Residential
	U.S. Forest Service Lands
	Forested Hills and Flatter Agricultural Areas
<b>Primary Access Points</b>	State Route 12
	U.S. Forest Service 25 Road
<b>Small Game / Waterfowl</b>	Average for ruffed grouse / Low for Waterfowl

## GAME MANAGEMENT UNIT 504 -STELLA

GMU 504 is located west of I-5, lies entirely in Cowlitz County, and includes the city of Longview. The GMU is a mix of urbanized areas, industrialized areas, private agricultural lands, and rural homes in the lower elevations, as well as private industrial forestlands. The Fisher Island Unit of the Mt. St. Helens Wildlife Area also lies within this GMU. The predominant geographic features of GMU 504 are the Columbia River, the City of Longview, and Coal Creek. The unit generally has low productivity for black-tails and elk. Access to the GMU is challenging due to its small size, the predominance of private lands, and urbanized areas. Additionally, the GMU is “Firearm Restricted”, meaning the use of modern firearms for hunting is not allowed. See the annual Big Game Regulations for specific details. Finally, the GMU has a small population of Columbian white-tailed deer in low-elevation areas near the Columbia River. Hunters are reminded that there is no open season for these deer and should check the Big Game Pamphlet for specifics.

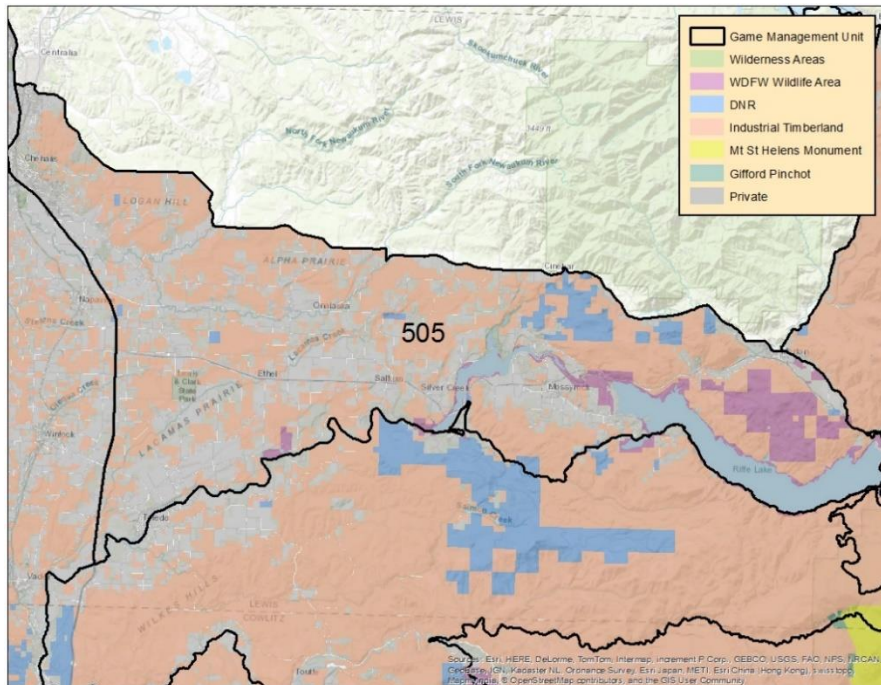


<b>Square Miles</b>	96
<b>Percent Public Land</b>	~5%
<b>Percent Industrial Forestland</b>	~40%
<b>Percent Urban/Sub-Urban</b>	~35%

<b>Primary Landowners</b>	Small Agricultural landowners
	Weyerhaeuser
	Urban/Suburban
<b>Habitat / Terrain</b>	Industrial Forestlands
	Floodplain / Private Agricultural and Urban
	Mix of Forested Hills and Flatter Developed Areas
<b>Primary Access Points</b>	State Route 4
	Coal Creek Road
<b>Small Game / Waterfowl</b>	Average for ruffed grouse
	Good for waterfowl

## GAME MANAGEMENT UNIT 505 -Mossyrock

GMU 505 is located east of I-5, north of the Cowlitz River, and lies entirely in Lewis County. The GMU is primarily a mix of private agricultural lands and rural homes. The Peterman Hill and Swofford Pond units of the Cowlitz Wildlife Area are also within this GMU. The predominant geographic features of GMU 505 are the Cowlitz River, I-5 and State Route 12, as well as Riffe and Mayfield Lakes. The unit generally has good productivity for black-tailed deer, but only a small elk population. Access to the GMU is challenging due to the predominance of small private landholdings. However, the Peterman Hill Unit of the Cowlitz Wildlife Area does provide access to solid deer hunting opportunities.

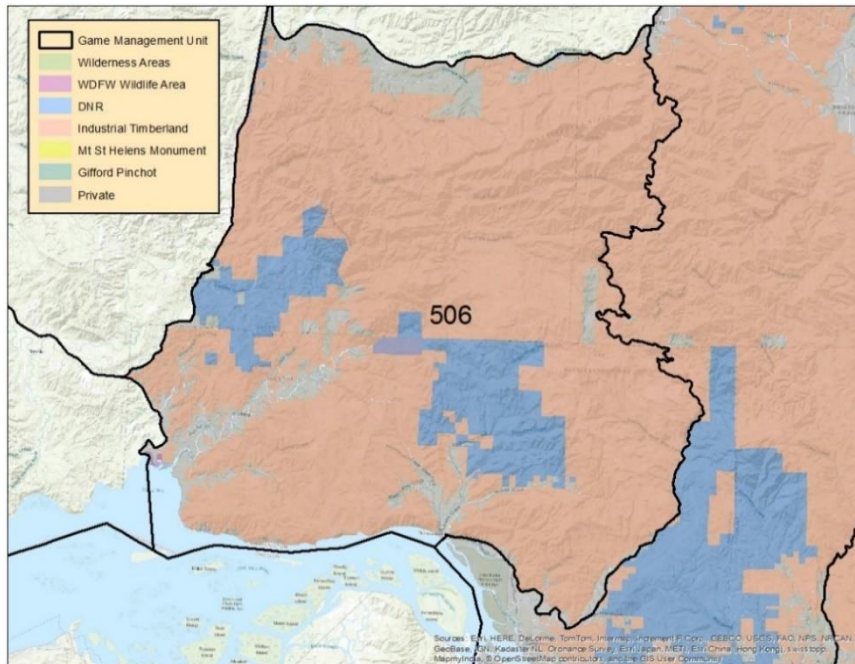


<b>Square Miles</b>	295
<b>Percent Public Land</b>	~20%
<b>Percent Industrial Forestland</b>	~45%
<b>Percent Urban/Sub-Urban</b>	~5%

<b>Primary Landowners</b>	Small Agricultural Owners
<b>Habitat / Terrain</b>	Private Agricultural
	Private Industrial and State Forestlands
	Mostly Flatter or Rolling Topography
	Some Steeper, Rugged Terrain
<b>Primary Access Points</b>	State Route 12
	Peterman Hill Road
<b>Small Game / Waterfowl</b>	Good for ruffed grouse
	Modest for waterfowl

## GAME MANAGEMENT UNIT 506 -Willapa Hills

GMU 506 is located west of I-5 at the western margin of WDFW Region 5 and lies in a combination of Wahkiakum, Pacific, and Lewis counties. The GMU is primarily private industrial and DNR forestlands with a small amount of private agricultural lands and rural homes on the valley floors. The predominant geographic features of GMU 506 are the Willapa Hills themselves, the Gray's River/Gray's Bay, the Willapa River, as well as State Routes 4 and 6. The unit has good productivity for black-tailed deer and a strong elk population. Access to the GMU involves navigating the property boundaries and access policies of private industrial forestland owners as well as locating public lands.



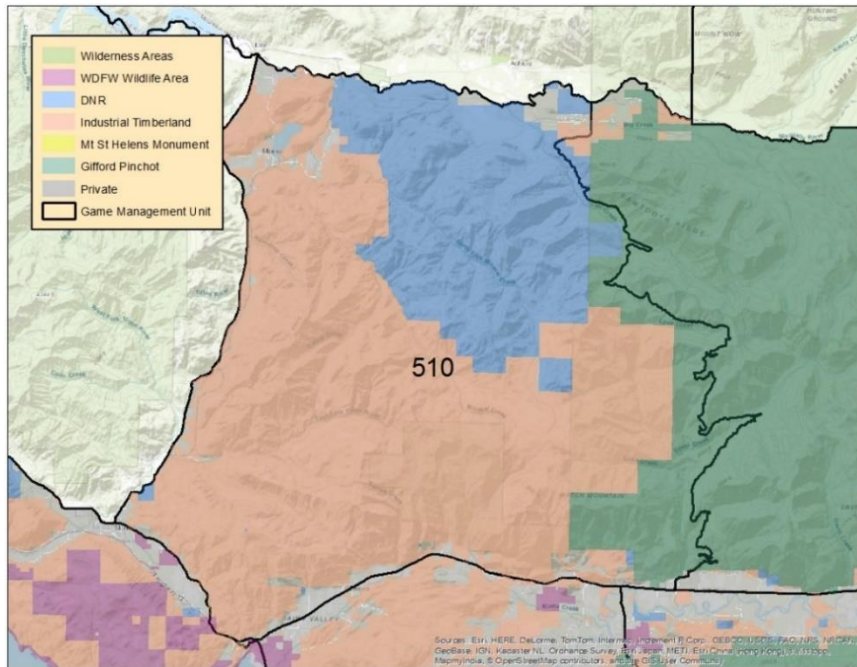
<b>Square Miles</b>	371
<b>Percent Public Land</b>	~30%
<b>Percent Industrial Forestland</b>	~60%
<b>Percent Urban/Sub-Urban</b>	~0%

<b>Primary Landowners</b>	Hancock
	Rayonier
	DNR
<b>Habitat / Terrain</b>	Private Industrial and State Forestlands
	Mostly Rugged Mountainous Terrain
	Limited Flatter, Valley Floor Topography
<b>Primary Access Points</b>	State Routes 4 and 6
<b>Small Game / Waterfowl</b>	Good for ruffed grouse
	Good for Waterfowl



## GAME MANAGEMENT UNIT 510 -Stormking

GMU 510 is located in northern WDFW Region 5, north of State Route 12, east of State Route 7, and lies entirely in Lewis County. The GMU is primarily a mix of private industrial forestlands, DNR forestlands, and USFS-managed lands. The predominant geographic features of GMU 510 are the Tilton River, Stormking Mountain, and Kiona Peak. The unit is generally low in productivity for black-tailed deer and elk.

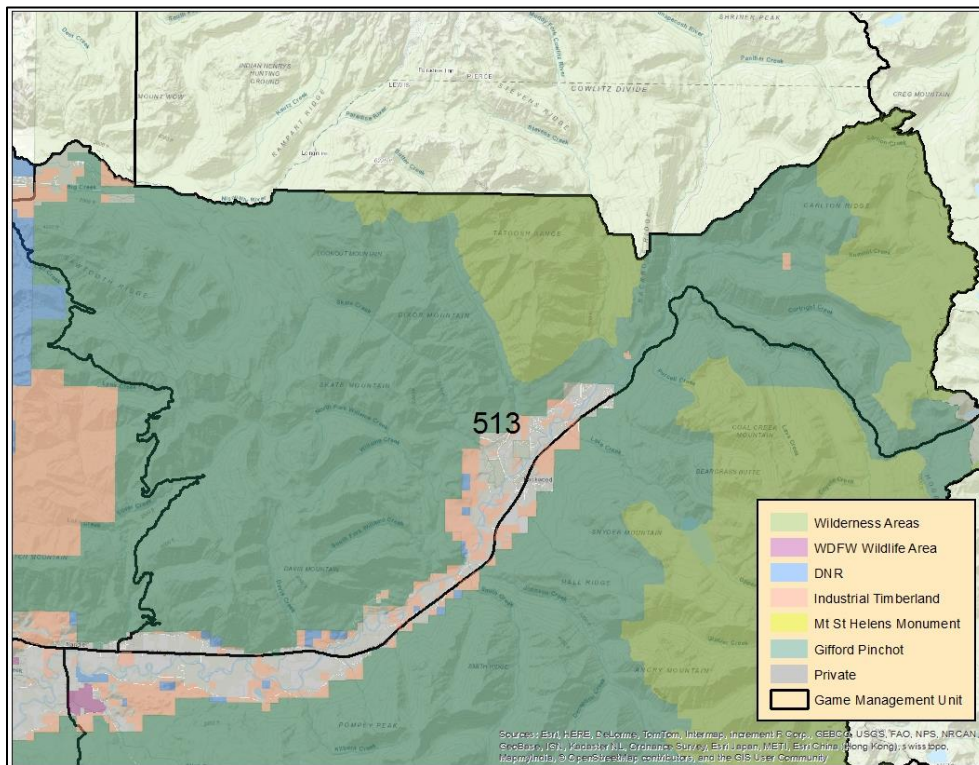


<b>Square Miles</b>	208
<b>Percent Public Land</b>	~50%
<b>Percent Industrial Forestland</b>	~45%
<b>Percent Urban/Sub-Urban</b>	~0%

<b>Primary Landowners</b>	Hancock
	Sierra Pacific
	DNR
<b>Habitat / Terrain</b>	Private Industrial, State, and US Forest Service Forestlands
	Rugged mountainous terrain
<b>Primary Access Points</b>	State Routes 7 and 12
	USFS Road 47
	DNR Road 1
<b>Small Game / Waterfowl</b>	Good for ruffed and Sooty Grouse
	Poor for waterfowl

## GAME MANAGEMENT UNIT 513 -South Rainier

GMU 513 is in the northeastern corner of WDFW Region 5, north of State Route 12, south of Mt. Rainier National Park, and lies entirely in Lewis County. The GMU is nearly entirely managed by the USFS except for a narrow band of private lands along State Route 12 and the Cowlitz River. The predominant geographic features of GMU 513 are the Cowlitz River, Sawtooth Ridge, Skate Mountain, and Carlton Ridge. Two USFS wilderness areas are found within GMU 513; Tatoosh and William O. Douglas. The unit is generally low in productivity for black-tailed deer and elk.

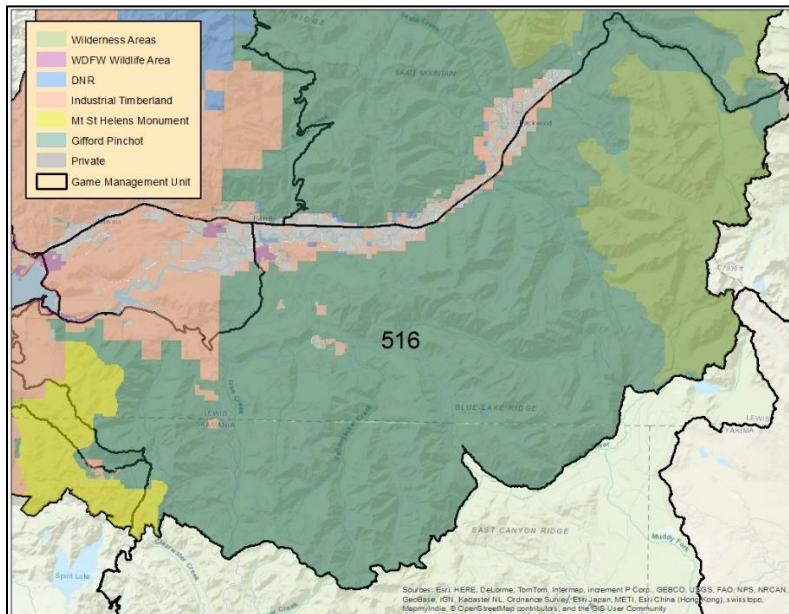


<b>Square Miles</b>	240
<b>Percent Public Land</b>	~95%
<b>Percent Industrial Forestland</b>	~0%
<b>Percent Urban/Sub-Urban</b>	~0%
<b>Percent Wilderness</b>	~20%

<b>Primary Landowners</b>	U.S. Forest Service
<b>Habitat / Terrain</b>	US Forest Service Forestlands
	Rugged mountainous terrain including wilderness
<b>Primary Access Points</b>	State Route 12
	USFS Road 47
	Pacific Crest Trail
<b>Small Game / Waterfowl</b>	Good for ruffed and sooty grouse
	Poor for waterfowl

## GAME MANAGEMENT UNIT 516 -Packwood

GMU 516 is a very large unit located in the northeastern portion of WDFW Region 5, south of State Route 12, and lies entirely in Lewis County. The GMU is nearly entirely managed by the USFS except for a narrow band of private lands along State Route 12. The predominant geographic features of GMU 516 are the Cowlitz River, Cispus River, and Goat Rocks Wilderness. The unit is generally low in productivity for black-tailed deer and elk.

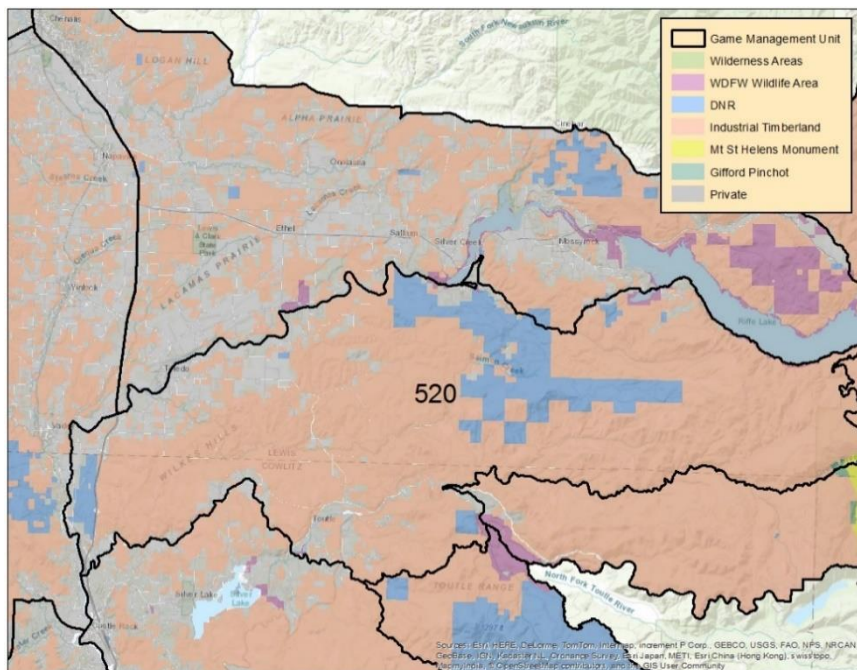


<b>Square Miles</b>	538
<b>Percent Public Land</b>	~95%
<b>Percent Industrial Forestland</b>	~2%
<b>Percent Urban/Sub-Urban</b>	~0%
<b>Percent Wilderness</b>	~20%

<b>Primary Landowners</b>	U.S. Forest Service
<b>Habitat / Terrain</b>	US Forest Service Forestlands
	Rugged mountainous terrain including wilderness
<b>Primary Access Points</b>	State Route 12
	USFS Roads 20 and 23
	Pacific Crest Trail
<b>Small Game / Waterfowl</b>	Good for ruffed and sooty grouse
	Poor for waterfowl

## GAME MANAGEMENT UNIT 520 -Winston

GMU 520 is located east of I-5, lying primarily between the Cowlitz and Toutle/Green Rivers. The unit sits primarily in Lewis County but is partially within both Cowlitz and Skamania counties as well. The GMU is primarily private industrial forestlands with a modest amount of DNR lands, a small area of USFS at its extreme eastern margin, and rural homes and agricultural areas in the northwestern part of the Unit. The predominant geographic features of GMU 520 are the Toutle River, Green River, Cowlitz River/Riffe Lake, as well as Salmon Creek. The unit has good productivity for both black-tailed deer and elk. Access to the GMU involves navigating the property boundaries and access policies of private industrial forestland owners as well as locating public lands.

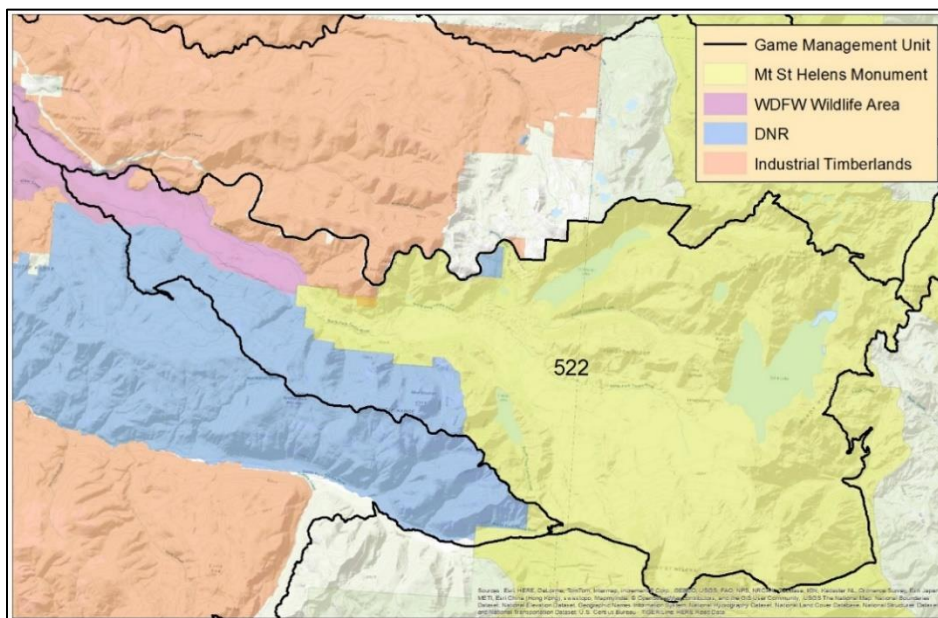


<b>Square Miles</b>	299
<b>Percent Public Land</b>	~20%
<b>Percent Industrial Forestland</b>	~75%
<b>Percent Urban/Sub-Urban</b>	~2%

<b>Primary Landowners</b>	Weyerhaeuser
	Olympic Resource Management
	DNR
<b>Habitat / Terrain</b>	Private Industrial Forestlands
	mountainous terrain Flatter in the western portion of GMU
<b>Primary Access Points</b>	State Routes 505 and 12
	Winston Creek Road
	Weyerhaeuser 1900
<b>Small Game / Waterfowl</b>	Good for ruffed grouse
	Poor for waterfowl

## GAME MANAGEMENT UNIT 522 -Loo-Wit

GMU 522 is a small unit located in the central portion of WDFW Region 5, south of State Route 12, and lies within Skamania and Cowlitz counties. The GMU is dominated by the USFS Mt. St. Helens National Volcanic Monument, with much smaller portions owned/managed by DNR, Weyerhaeuser, and WDFW. The Mudflow and Hoffstadt Units of WDFW’s St. Helens Wildlife Area lie partially within GMU 522. The predominant geographic features of GMU 522 are Mt. St. Helens and the North Fork Toutle River. Recreational access to the unit is severely limited by the policies of the Monument, which are in place to protect the valuable ecological features of the recovering Mt. St. Helens landscape. **The unit is closed to hunting with the exceptions of elk and mountain goat hunting on a permit-only basis.**

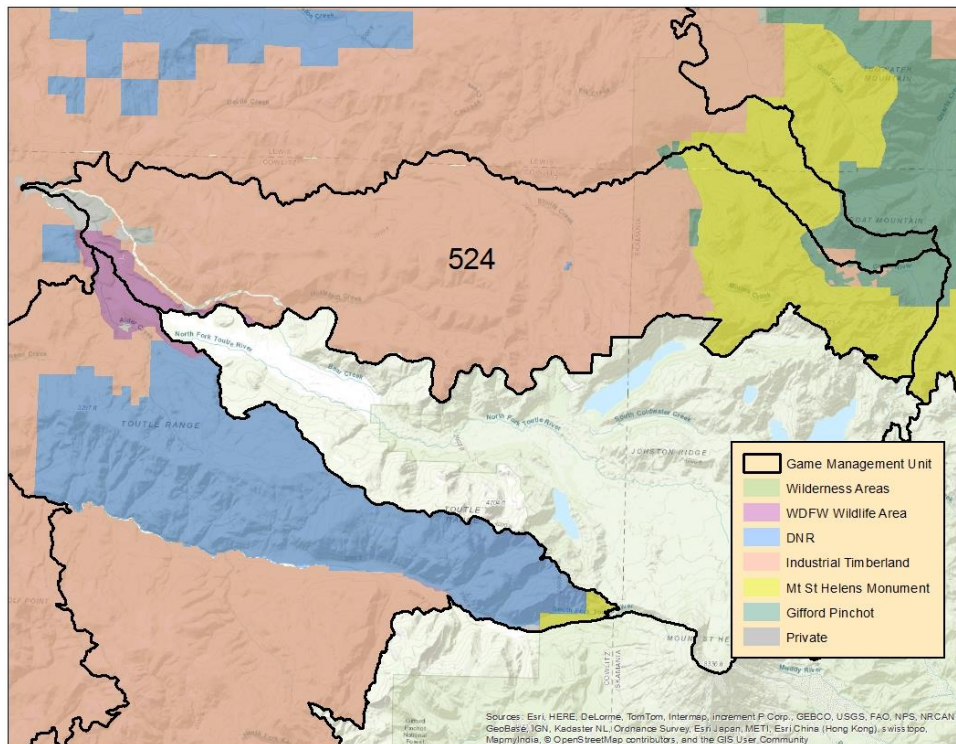


<b>Square Miles</b>	93
<b>Percent Public Land</b>	~95%
<b>Percent Industrial Forestland</b>	~5%
<b>Percent Urban/Sub-Urban</b>	0%

<b>Primary Landowners</b>	U.S. Forest Service St. Helens Monument
	DNR
	WDFW
	Weyerhaeuser
<b>Habitat / Terrain</b>	Mt. St. Helens Blast Zone and Mudflow
	DNR / Private Industrial Forestlands
	Remote Mountainous Terrain
<b>Primary Access Points</b>	State Route 504
	U.S. Forest Service Road 26/99
	DNR 3000 Road
<b>Small Game / Waterfowl</b>	Closed Season for these Species

## GAME MANAGEMENT UNIT 524 -Margaret

GMU 524 is a small Unit located in the central portion of WDFW Region 5, south of the Green River, and lies primarily within Cowlitz and Skamania counties. GMU ownership is dominated by Weyerhaeuser, the USFS Mt. St. Helens National Volcanic Monument, a small area of private industrial forestland, and a small portion of WDFW's St. Helens Wildlife Area. The predominant geographic features of GMU 524 are the Green River and the Mt. Margaret Backcountry. The easternmost portion of the unit (as defined by Elk Area 5066) is closed to general-season elk hunting. Hunting in this portion of the GMU is instead offered on a permit-only basis.

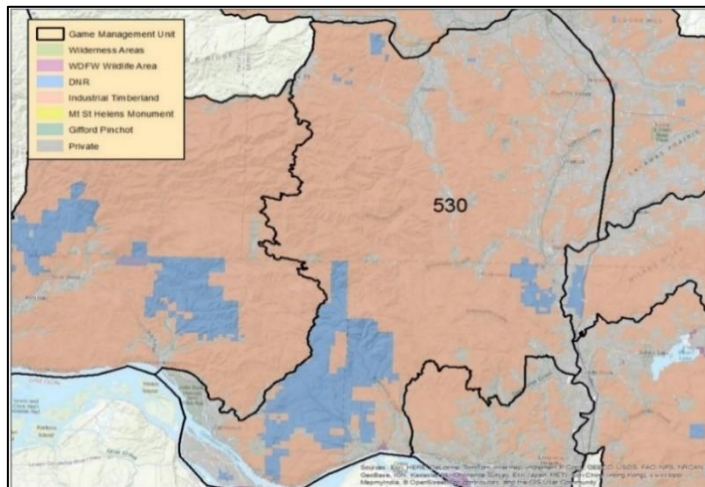


<b>Square Miles</b>	96
<b>Percent Public Land</b>	~20%
<b>Percent Industrial Forestland</b>	~75%
<b>Percent Urban/Sub-Urban</b>	Zero

<b>Primary Landowners</b>	Weyerhaeuser
	U.S. Forest Service St. Helens Monument
<b>Habitat / Terrain</b>	Private Industrial Forestlands
	Mt. Margaret Backcountry
	Remote Mountainous Terrain
<b>Primary Access Points</b>	State Route 504
	Weyerhaeuser 1100
<b>Small Game / Waterfowl</b>	Good for ruffed grouse
	Poor for Waterfowl

## GAME MANAGEMENT UNIT 530 Ryderwood

GMU 530 is located along the western side of I-5 from roughly Castle Rock to Chehalis and lies in a combination of Lewis, Cowlitz, and Wahkiakum counties. The GMU is primarily private industrial and DNR forestlands but contains private agricultural lands and rural homes on the valley floors and Puget Island. The predominant geographic features of GMU 530 are the Willapa Hills, the Columbia and Chehalis rivers, as well as State Routes 4 and 6. The unit has very good productivity for black-tailed deer and a good elk population. Access to the GMU involves navigating the property boundaries and access policies of private industrial forestland owners as well as locating public lands. The GMU has a population of Columbian white-tailed deer in low elevation areas near the Columbia River, especially in the vicinity of the U.S. Fish and Wildlife Service Julia Butler Hansen Refuge for the deer and on Puget Island. Hunters are reminded that there is no open season for these deer and should check the Big Game Pamphlet for specifics.

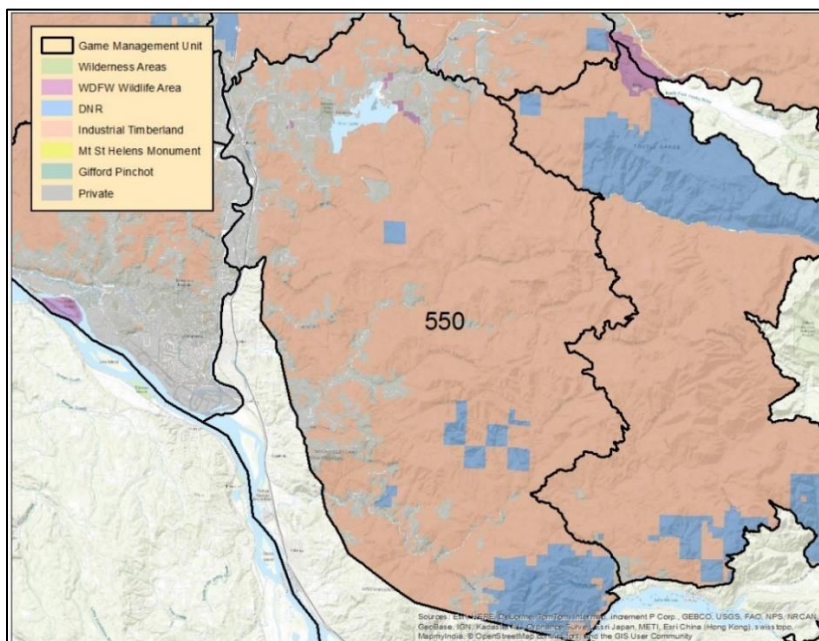


<b>Square Miles</b>	541
<b>Percent Public Land</b>	~20%
<b>Percent Industrial Forestland</b>	~70%
<b>Percent Urban/Sub-Urban</b>	~5%

<b>Primary Landowners</b>	Sierra Pacific
	Weyerhaeuser
	DNR
	Small Private / Agricultural
<b>Habitat / Terrain</b>	Private Industrial and DNR Forestlands
	Floodplain / Private / Agricultural
	Mountainous Terrain
<b>Primary Access Points</b>	State Routes 4 and 6 and 506
	Boistfort Road
	Germany Creek Road
	Abernathy Creek Road
<b>Small Game / Waterfowl</b>	Good for ruffed grouse
	Good for waterfowl

## GAME MANAGEMENT UNIT 550 Coweeman

GMU 550 is located east of I-5, south of State Route 504 in the Cascade Mountain foothills. The unit sits entirely within Cowlitz County. The GMU (Game Management Unit) is primarily private industrial forestlands with a modest amount of DNR (Department of Natural Resources) lands as well as rural homes and agricultural areas mostly in the northwestern part of the unit. The predominant geographic features of GMU 550 are Silver Lake, the Coweeman and Kalama Rivers, Cowlitz River, as well as Baird Mountain and Georges Peak. The unit has very good productivity for black-tailed deer and good productivity for elk. Access to the GMU involves navigating the property boundaries and access policies of private industrial forestland owners as well as locating public lands.



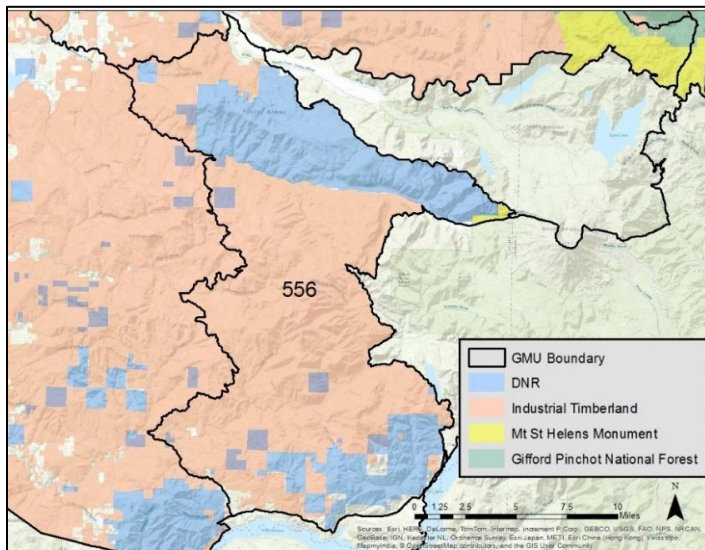
<b>Square Miles</b>	347
<b>Percent Public Land</b>	~15%
<b>Percent Industrial Forestland</b>	~80%
<b>Percent Urban/Sub-Urban</b>	~5%

<b>Primary Landowners</b>	Weyerhaeuser
	DNR
	Small Private / Agricultural
<b>Habitat / Terrain</b>	Private Industrial and DNR Forestlands
	Floodplain / Private / Agricultural
	Mountainous Terrain
<b>Primary Access Points</b>	State Routes 504
	Weyerhaeuser 4700, 6100, 6300
	Kalama River Road
	Rose Valley Road
<b>Small Game / Waterfowl</b>	Good for ruffed grouse
	Modest for waterfowl



## GAME MANAGEMENT UNIT 556 Toutle

GMU 556 is located east of I-5, in the upper watersheds of the Kalama, Coweeman, and South Fork Toutle rivers. The unit sits entirely within Cowlitz County. The GMU is largely private industrial forestlands but does have a meaningful amount of DNR lands in the northern and southern portions of the unit. The predominant geographic features of GMU 556 are The South Fork Toutle, Coweeman, and Kalama Rivers, as well as Lakeview Peak and Elk, Big Bull, and Little Cow Mountains. The unit has modest productivity for black-tails and good productivity for elk. **Hunters should note that all elk hunting in GMU 556 Toutle is by Special Permit Only -- there are no General Seasons for elk.** In 2021, the boundary between the Toutle and Yale GMUS was adjusted to simplify hunting regulations. The new boundary on the southern end of the Toutle GMU now follows Lewis River Road. Access to the Toutle GMU involves navigating the property boundaries and access policies of private industrial forestland owners as well as locating public lands.

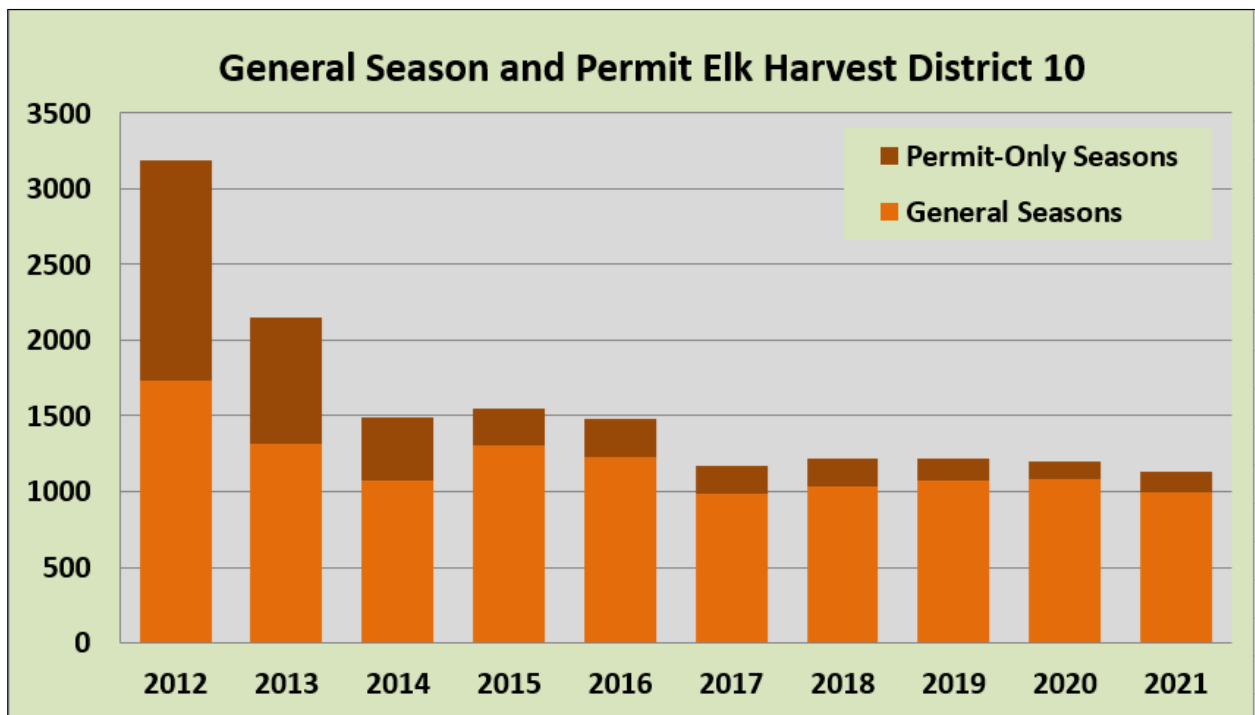


Square Miles	230
Percent Public Land	~35%
Percent Industrial Forestland	~65%
Percent Urban/Sub-Urban	Zero

Primary Landowners	Weyerhaeuser
	DNR
Habitat / Terrain	Private Industrial and DNR Forestlands
	Mountainous Terrain
Primary Access Points	State Routes 503 and 504
	DNR 4200 and 4250 Roads
	Weyerhaeuser 4950, 5500, 7200, 1400 and 6600
	Rock Creek Road
Small Game / Waterfowl	Good for ruffed and sooty grouse
	Poor for waterfowl

## ELK

Historically, District 10 has been among the leaders in statewide elk harvest. The highest general season harvests in 2021 occurred in GMUs 506 (Willapa Hills), 530 (Ryderwood), 520 (Winston), and 550 (Coweeman). There are also many permit hunts in District 10, which are offered to manage the elk population, address agricultural damage caused by elk, and provide recreational opportunity. Additionally, two GMUs – 522 (Loo-Wit) and 556 (Toutle) – are permit-only for both cow and bull elk. In 2021, 995 elk were harvested during the general season in addition to 139 elk harvested by permit in District 10. Elk found west of I- 5 are considered to be of the Roosevelt sub-species, while those in the Cascade Mountain Range are of mixed origin. Specifically, Cascade elk are a genetic combination of native Roosevelt elk and introduced Rocky Mountain elk. The Figure below shows the trend in District 10 elk harvest over the past ten years and how this harvest is divided among general and permit seasons.



Additional metrics help decide where to begin scouting for an elk hunting location. The table below includes elk harvest, percentage success, number of hunters, number of hunters per square mile, elk harvest per square mile, and the percentage of harvest comprised of five-point or larger bulls. The data are listed by GMU and presented for the five-year averages of the 2017-21 hunting seasons. Data represent modern firearm general seasons only.

Elk Hunting Statistics; WDFW District 10						
Modern Firearm General Seasons 2017-21 5-Year Averages						
GMU	Elk Harvest	Percent Success	Hunters	Hunters / SQ Mile	Elk Harvest / SQ Mile	Percent of Bulls 5-PT. +
501 (Lincoln) *	18	8	215	0.9	0.08	0.65
503 (Randle)	8	4.6	159	2.8	0.15	0.62
504 (Stella) *	7	11	76	0.8	0.08	0.2
505 (Mossyrock)	14	6.4	208	0.7	0.05	0.87
506 (Willapa Hills)	119	14.2	843	2.3	0.32	0.43
510 (Stormking)	12	7	161	0.8	0.06	0.75
513 (South Rainier)	13	6.3	211	0.9	0.05	0.70
516 (Packwood)	25	3.6	691	1.3	0.05	0.51
520 (Winston)	74	8.6	876	2.9	0.25	0.60
524 (Margaret)	25	8.3	301	3.1	0.26	0.67
530 (Ryderwood)	86	11.1	787	1.5	0.16	0.53
550 (Coweeman)	54	6.6	815	2.3	0.16	0.46
WDFW District 10 **	459	8.3	5264	1.6	0.14	0.52

\* = Antlerless Elk Included in Harvest in GMUs 501 and 504, All Others Are Bulls Only

\*\* GMUs 522 (Loo-Wit) and 556 (Toutle) Not Included; All Elk Hunting in These GMUS is by Special Permit Only

## ELK POPULATION INFORMATION

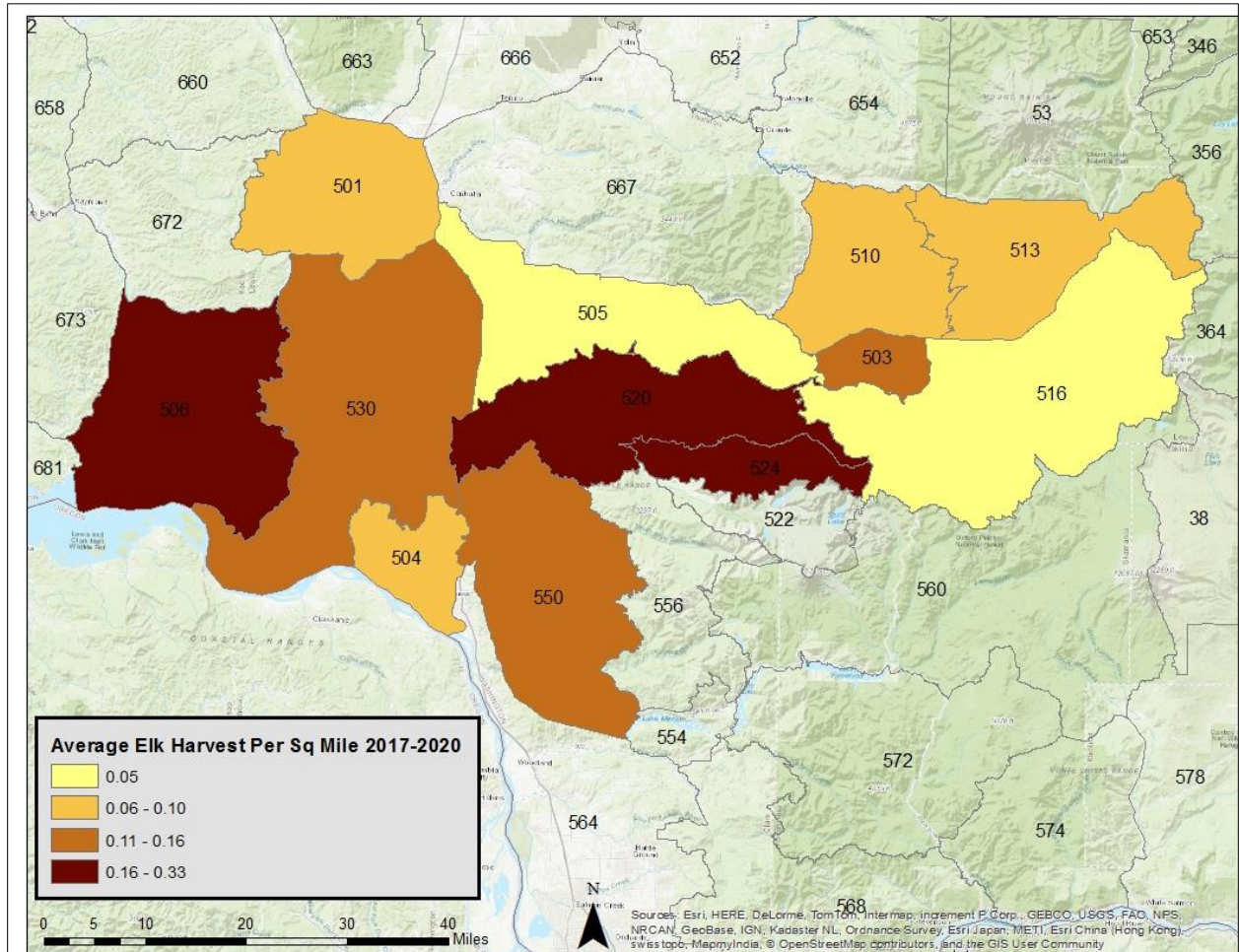
Elk populations in the game management units including the Mount St. Helens elk herd area are down from historic highs during the mid-2000s. This population reduction was implemented per the objectives of the [St. Helens Elk Herd Plan](#). Liberal antlerless elk hunting opportunity, combined with several years of late-winter and spring storms, reduced the elk population in these GMUs. Elk within the St. Helens herd typically lack large fat reserves to help with long, hard winters. Additionally, Treponeme-Associated Hoof Disease (TAHD) is common in District 10 elk. Female elk suffering from this debilitating condition have been documented to have lower pregnancy rates, poorer body condition, and lower survival rates than healthy elk in the same landscape (WDFW-Unpublished Data).

Survey efforts conducted during the spring of 2018, 2019, and 2022 indicate that the Mount St. Helens elk herd has stabilized at a population level of about 1,000 adult elk in the area used to index the population. Available data points toward an elk population that is below objectives and well below historic highs. Therefore, hunters should expect a generally less productive elk hunting season during the 2022 hunt. WDFW has reduced antlerless hunting opportunities accordingly.

Elk population surveys in GMUs 506 (Willapa Hills) and 530 (Ryderwood) are conducted on an intermittent basis and were most recently completed in spring 2020. Surveys conducted in 2014, 2016, 2018, and 2020 indicate stable elk populations in GMUs 506 and 530. Severe winter conditions rarely cause population-level impacts on Willapa elk populations. Hunting opportunities and success rates should be similar to recent years.

The general bull elk season is always challenging, but the District 10 elk population produces a harvest of nearly 1,000 bull elk annually, and those hunters who put in the effort and remain focused may be rewarded with success. See below for an illustration of the average elk harvest per square mile during 2017-20 seasons, by GMU in WDFW District 10 during the modern

firearm general season. 2021 harvests followed a similar pattern but are not included in this figure. Note that GMUs 522 and 556 are excluded because all elk hunting in these two units is by special permit only.



**Additional resources for those interested in District 10 elk**

You can find annual Harvest Reports for deer and elk based on hunter reporting [on the WDFW website](#). For more information regarding elk management in the Mount St. Helens, Willapa Hills, and South Rainier elk herd areas, review the [Elk Status and Trend Reports](#) on the WDFW website.



Photo by Jeff Larson

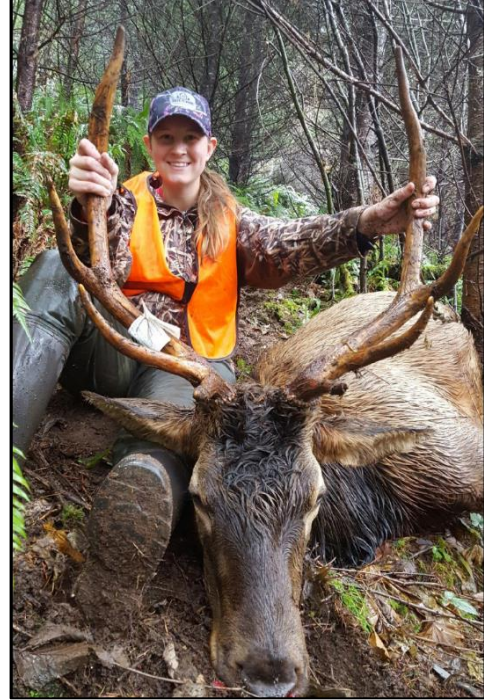


Photo submitted by Frank Gordon

### Elk scouting strategies

Use the [Hunting Regulations Mapping Tool](#) to look at aerial photos to identify recent clear-cuts and drainages. You can do some preseason scouting on the commercial tree farms by bike or on foot, as most areas will not be open to motorized access yet. Motorized access and camping are available on DNR lands unless there is a high fire danger. Prospective elk hunters should keep in mind that the animals often prefer cooler, wetter areas during times of warmer weather, and are more often active during dawn and dusk.



Bull elk in GMU 556 photo by Eric Holman (WDFW)



Elk taken in GMU 520 photo by Lisa Hallock (WDFW)

## TREPONEME-ASSOCIATED HOOF DISEASE OF ELK

Since 2008, reports of elk with deformed, broken, or missing hooves have increased dramatically in southwest Washington, with sporadic observations in other areas west of the Cascade Range. While elk are susceptible to many conditions which result in limping or hoof deformities, the prevalence and severity of this new affliction suggested something altogether different. WDFW diagnostic research (2009 – 2014), in conjunction with a panel of scientific advisors, found that these hoof abnormalities were strongly associated with treponeme bacteria, known to cause a hoof disease of cattle, sheep, and goats called digital dermatitis. Although digital dermatitis has affected the livestock industry for decades, Treponeme-Associated Hoof Disease (TAHD) is the first known instance of digital dermatitis in a wild ungulate. The disease is currently concentrated in southwestern Washington where prevalence is highest in Cowlitz, Wahkiakum and western Lewis County. The disease is also present at lower prevalence in elk herds that are distant and discrete from the core affected area.

While many questions remain about the disease, several aspects of TAHD in elk are clear:

- **Vulnerability:** The disease appears to be highly infectious among elk, but there is no evidence that it affects humans. TAHD can affect any hoof in any elk, young or old, male or female.
- **Hooves only:** Tests show the disease is limited to animals' hooves and does not affect their meat or organs. If the meat looks normal and if hunters harvest, process and cook it practicing good hygiene, it is probably safe to eat.
- **No treatment:** There is no vaccine to prevent the disease, nor are there any proven options for treating it in the field. Similar diseases in livestock are treated by cleaning and bandaging their hooves and giving them foot baths, but that is not a realistic option for free-ranging elk.

### How hunters can help:

In 2021, WDFW is implementing an incentive-based pilot program to encourage west-side (400, 500, 600 series GMUs) hunters to harvest limping elk, potentially reducing prevalence of the disease over time. The objective of this program is to increase the proportion of limping elk in the total harvest, rather than increase elk harvest overall. General season or permit hunters can choose to participate in the program by submitting elk hooves at one of the many collection sites in western Washington. See the WDFW website for the locations of collection sites. Hunters that submit hooves with signs of TAHD (for example, abnormal hooves) will be automatically entered into a drawing for a special incentive permit for the following license year. Multiple bull permits in western Washington with season dates of Sep. 1 – Dec 31 will be awarded. Additionally, all participants will receive a custom, waterproof license holder.

So, what can hunters do to help?

- **Harvest a limping elk from any 400, 500, 600 series GMUs**
- **Turn in your elk hooves along with complete registration forms at one of several collection sites in western Washington**
- **Report elk:** Hunters can help WDFW track TAHD by reporting observations of both affected and unaffected elk on the department's online reporting form.
- **Clean shoes and tires:** Anyone who hikes or drives off-road in a known affected area can help minimize the risk of spreading the disease to new areas by removing all mud from their shoes and tires before leaving the area.

WDFW is working with scientists, veterinarians, outdoor organizations, tribal governments, and others to better understand and manage TAHD. For more information about TAHD, see [WDFW's website](#) and [Washington State University's website](#). Additional information on TAHD and this incentive program can also be found on page 65 of the Big Game Hunting Pamphlet.



WDFW Research on Hoof Disease photo by Eric Holman (WDFW)

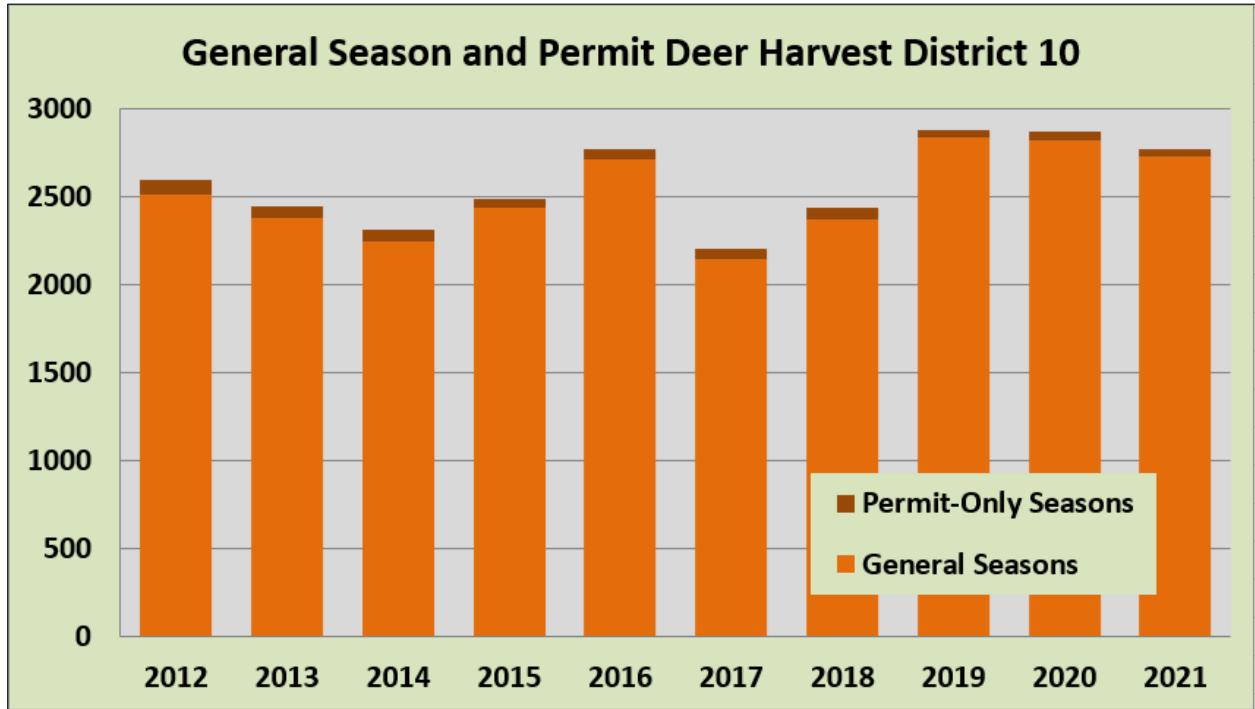


Study elk captured in GMU 550 photo by Eric Holman (WDFW)



## DEER

Several GMUs in District 10 are among the best in the state for black-tailed deer harvest. The highest 2021 general season buck harvests within District 10 occurred in GMUs 550 (Coweman), 520 (Winston), 530 (Ryderwood), 556 (Toutle), 505 (Mossyrock) and 506 (Willapa Hills). Most harvest occurs during general seasons, with a small portion of the harvest occurring during special permit seasons (see figure below). For more information on deer in District 10, see the annual [Game Status and Trend Report](#) on the WDFW website.



Additional metrics can help decide where to begin scouting for a deer hunting location. The below table includes buck harvest, percentage success, number of hunters, number of hunters per square mile, buck harvest per square mile, and the percentage of harvest comprised of 3-point or larger bucks. The data are listed by GMU and presented for the five-year averages of the 2017-21 hunting seasons. Data represent modern firearm general seasons only.

Blacktail Buck Hunting Statistics; WDFW District 10						
Modern Firearm General Seasons 2017-21 5-Year Averages						
GMU	Buck Harvest	Percent Success	Hunters	Hunters / SQ MI	Buck Harvest / SQ Mile	Percent Bucks 3 PT. +
501 (Lincoln)	210	23.6	891	3.8	0.91	0.32
503 (Randle)	38	13.6	278	5.0	0.68	0.39
504 (Stella)	43	28.4	152	1.6	0.45	0.43
505 (Mossyrock)	197	25.3	787	2.7	0.67	0.36
506 (Willapa Hills)	209	23.6	876	2.4	0.56	0.29
510 (Stormking)	41	13.1	307	1.5	0.20	0.5
513 (South Rainier)	23	11.1	211	0.9	0.10	0.43
516 (Packwood)	55	9.2	595	1.1	0.10	0.38
520 (Winston)	305	25.1	1207	4.0	1.02	0.31
524 (Margaret)	28	18.3	147	1.5	0.29	0.46
530 (Ryderwood)	327	24.5	1325	2.4	0.60	0.32
550 (Coweeman)	398	27.1	1496	4.3	1.15	0.29
556 (Toutle)	149	20.2	729	3.3	0.67	0.27
<b>WDFW District 10</b>	<b>2022</b>	<b>21.2</b>	<b>8793</b>	<b>2.5</b>	<b>0.57</b>	<b>0.32</b>

Black-tailed deer populations are stable to increasing in District 10. The annual harvest of more than 2,000 bucks for all user groups combined has been typical for many years. The severe winter of 2016-17 caused some deer mortality and led to a decline in harvest in the 2017 season. The recent winters have been mild, and deer hunting opportunity should again be good in 2022.

Hunting for black-tailed deer is often best near the end of the general season when conditions improve for stalking and moving through the woods in heavily vegetated western Washington. The best opportunity often occurs during the late buck hunt, when favorable stalking and weather conditions combine with the breeding season or rut. The 2022 late buck season runs Nov. 17-20. Black-tailed deer generally favor dense vegetation and have small home ranges. The most successful hunters study the area carefully and move very slowly, constantly searching for deer.

See below for an illustration of the average buck harvest per square mile during the seasons of 2017-20, by GMU in WDFW District 10 during the modern firearm general season. 2021 harvests followed a similar pattern but are not included in this figure. Note that GMU 522 (Loo-Wit) is not included as this unit closed to deer hunting.

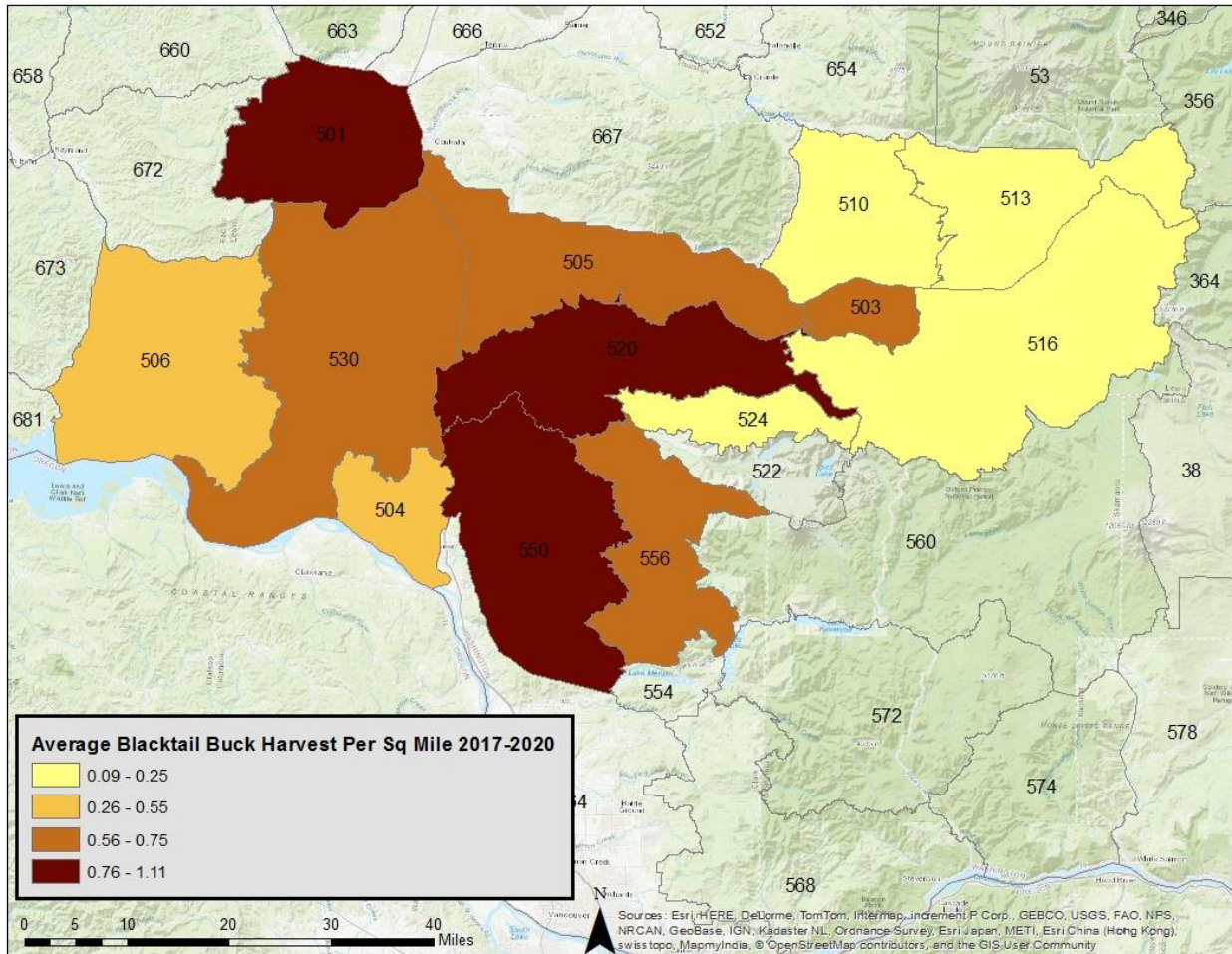


Photo by Eric Holman (WDFW)



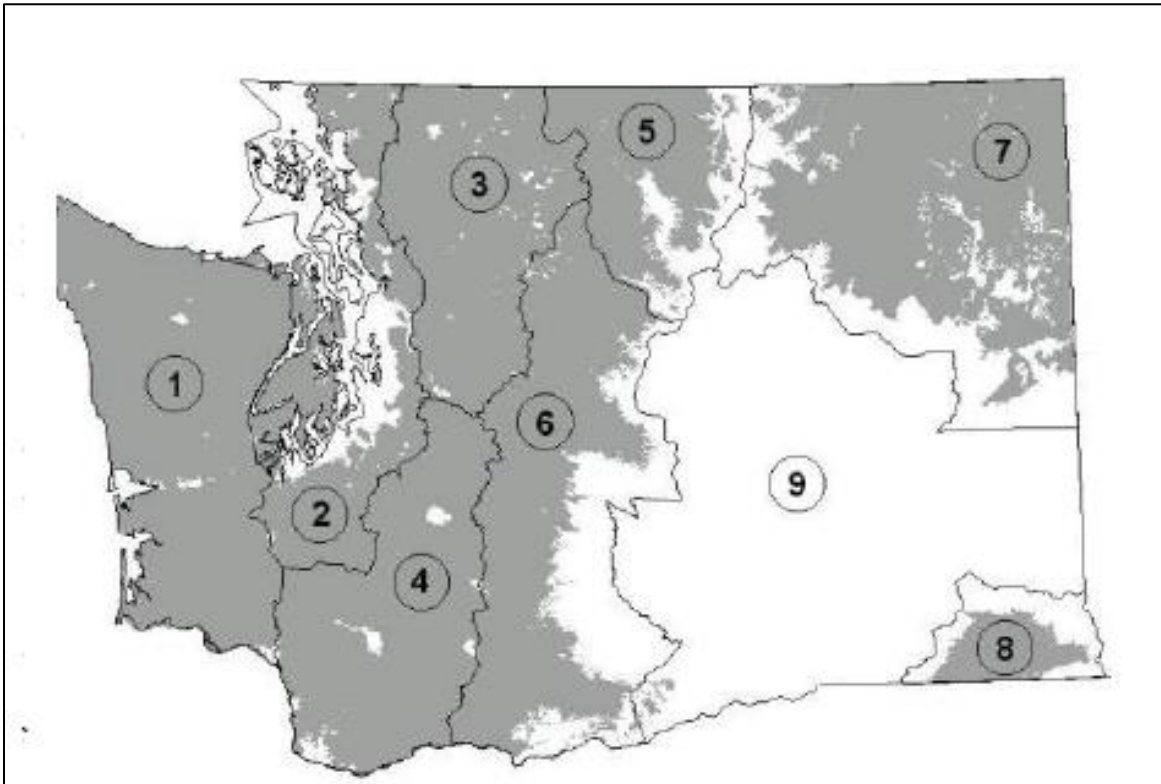
District 10 black-tailed buck submitted by Dan Howell



District 10 black-tailed bucks submitted by Tom Rhodes (WDFW)

## BEAR

District 10 makes up part of both the South Cascades and Coastal Bear Management Units (BMU) for the fall bear hunting season which is open from Aug. 1-Nov. 15. There currently are no spring bear hunting opportunities in District 10.



Black bear distribution in gray and 9 Black Bear Management Units in Washington

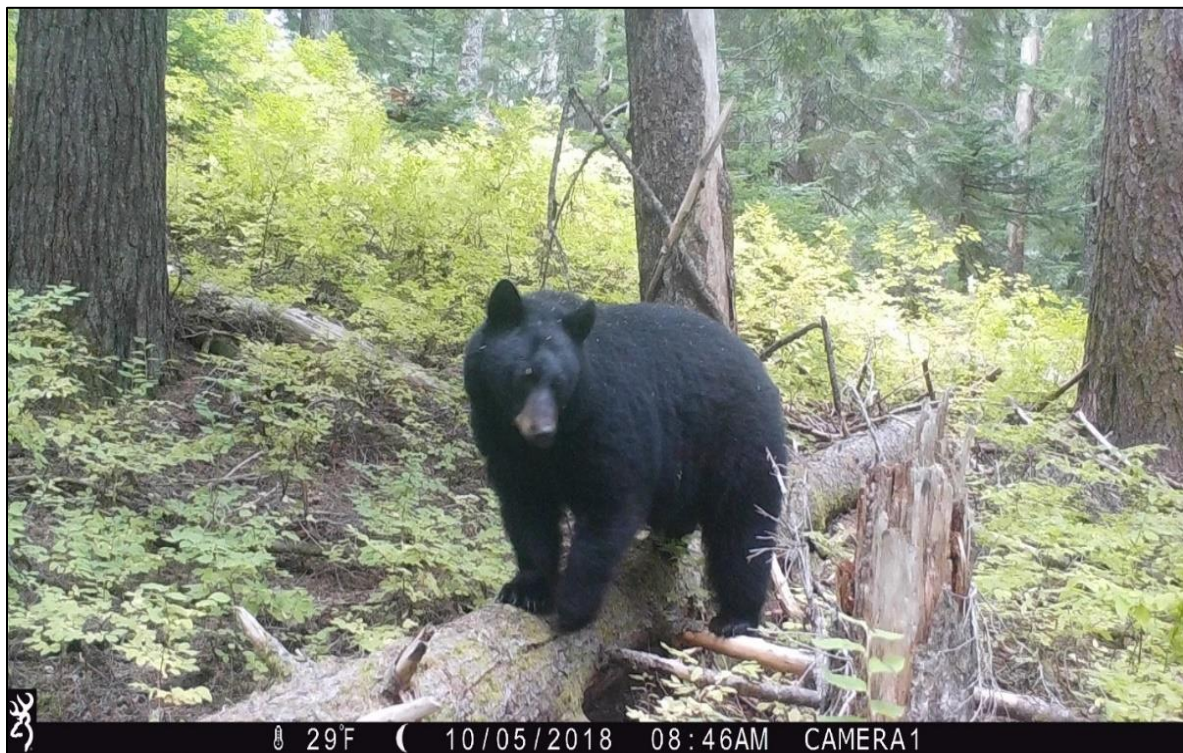
Harvest numbers and hunter success in 2021 were down from high points in 2019 and 2020. See table below for harvest numbers and hunter success by GMU. For more information on the management of black bears in Washington, including the Coastal and South Cascades management zones, see the [Status and Trend Report](#) on the WDFW website.

Successful bear hunters must submit a premolar tooth to WDFW. See page 68 of the [Big Game pamphlet](#) for details.

Hunting for black bears is challenging, but also can be rewarding. Hunters should try a variety of methods, including targeting areas of favored foods like huckleberries, blackberries, cascara trees, etc. Other methods include glassing clearcuts or alpine areas at dawn and dusk, as well as predator calling.

### Black Bear Harvest in District 10 2019-2021

GMU	2021		2020		2019	
	Total Harvest	Hunter Success	Total Harvest	Hunter Success	Total Harvest	Hunter Success
501 - Lincoln	6	3%	12	5%	27	15%
504 - Stella	0	0%	7	19%	7	20%
506 - Willapa Hills	12	4%	23	8%	25	8%
530 - Ryderwood	15	4%	26	7%	25	7%
503 - Randle	0	0%	2	2%	6	8%
505 - Mossyrock	6	4%	12	11%	9	8%
510 - Stormking	4	5%	5	6%	6	9%
513 - South Rainier	15	12%	12	8%	22	16%
516 - Packwood	10	4%	9	3%	19	7%
520 - Winston	4	1%	3	1%	32	10%
524 - Margaret	3	3%	7	9%	0	0%
550 - Coweeman	2	1%	12	4%	16	5%
556 - Toutle	0	0%	4	4%	3	2%



Black bear in the Gifford Pinchot National Forest near Mount St. Helens. Photo by Nicholle Stephens (WDFW)

## COUGAR

In 2020-21, hunters harvested 13 cougars in the GMUs that make up District 10. 2021-22 harvest summaries are not yet available but will be similar. Cougar hunting in this region is managed under a harvest guideline designed not exceed harvest of 12-16 percent of the adult population annually. The season consists of an early (Sept. 1-Dec. 31) and late (Jan. 1-April 30) hunt period. The harvest guideline may be achieved during the early hunt period, and prospective hunters should visit the [cougar hunting page](#) to assure that the season in their prospective area remains open.

Most cougar hunting in Western Washington occurs as an additional opportunity concurrent with deer and elk hunting. Hunters who want to harvest cougars should focus on areas with concentrations of deer and elk. Fresh snow facilitates tracking, and hunters may want to try predator calling.



Photo provided by Todd Brewer

## MOUNTAIN GOAT

The southern Washington Cascade Mountains support a robust population of mountain goats. Areas with goat populations span the boundaries of WDFW districts. Specifically, the Goat Rocks population lies in both Districts 8 and 10, while the Mount St. Helens population lies in Districts 9 and 10.

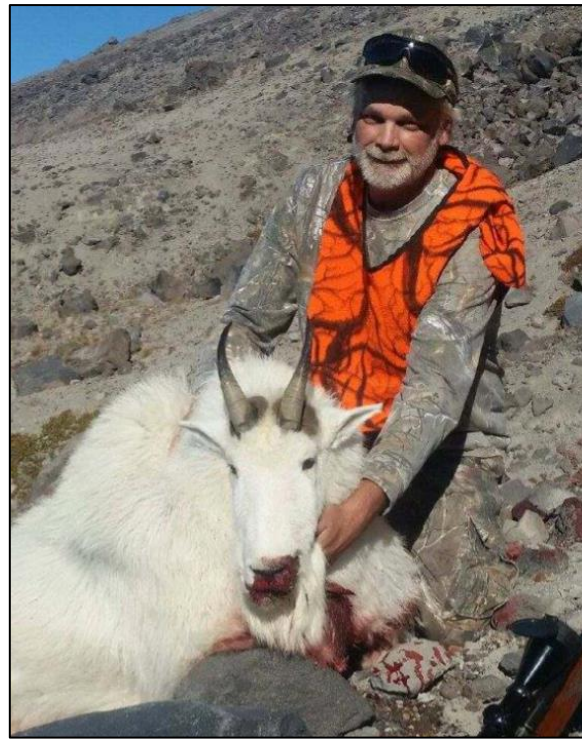
Goat populations in the Goat Rocks area have dipped in recent years and currently stand at roughly 175. Tag numbers have been adjusted downward and hunters fortunate enough to draw these permits should still enjoy a successful hunt. The Goat Rocks area has been divided into two hunt areas. Selected hunters need to review the boundaries of the hunt areas before going afield.

For the first time in many decades, mountain goat permits are available for the Mount St. Helens population. Goats have re-colonized the area following the 1980 eruption and the population is now approximately 250 goats. For hunting management, two hunt areas have been delineated and one tag has been awarded in each area, each year, since 2018.

Successful draw applicants for all hunt areas will receive a letter with additional details regarding hunt areas, mandatory checking requirements, mandatory goat identification training, biological sample collection, and more.



Goat Rocks Mountain Goat photo provided by Kristina Luttrell



Mount St. Helens Mountain Goat photo provided by Jim Rich





Mt. Margaret Backcountry goat provided by Nate Corley



Mt. St. Helens goat provided by Brad Crocco

## PHEASANT

WDFW releases pheasants multiple times throughout the pheasant hunting season at locations in District 10: In Lewis County at the Kosmos Unit of the Cowlitz Wildlife Area and on DNR property on Lincoln Creek. There is also a private lands release at the site referred to as Woodland Bottoms. For more information about the Western Washington Pheasant Release Program, visit the [WDFW website](#) and the property location guide with accompanying maps in the 2022 Western Washington pheasant release pamphlet -available in late summer 2022.



Woodland Bottoms Pheasant Release Site 2020, photo by Monique Ferris (WDFW)

Youth hunters and those over 65 years of age should check the regulations for opportunities to hunt earlier in the season.

Hunting hours are from 8 a.m. - 4 p.m.



Releasing pheasants, photo by Monique Ferris (WDFW).

## FOREST GROUSE

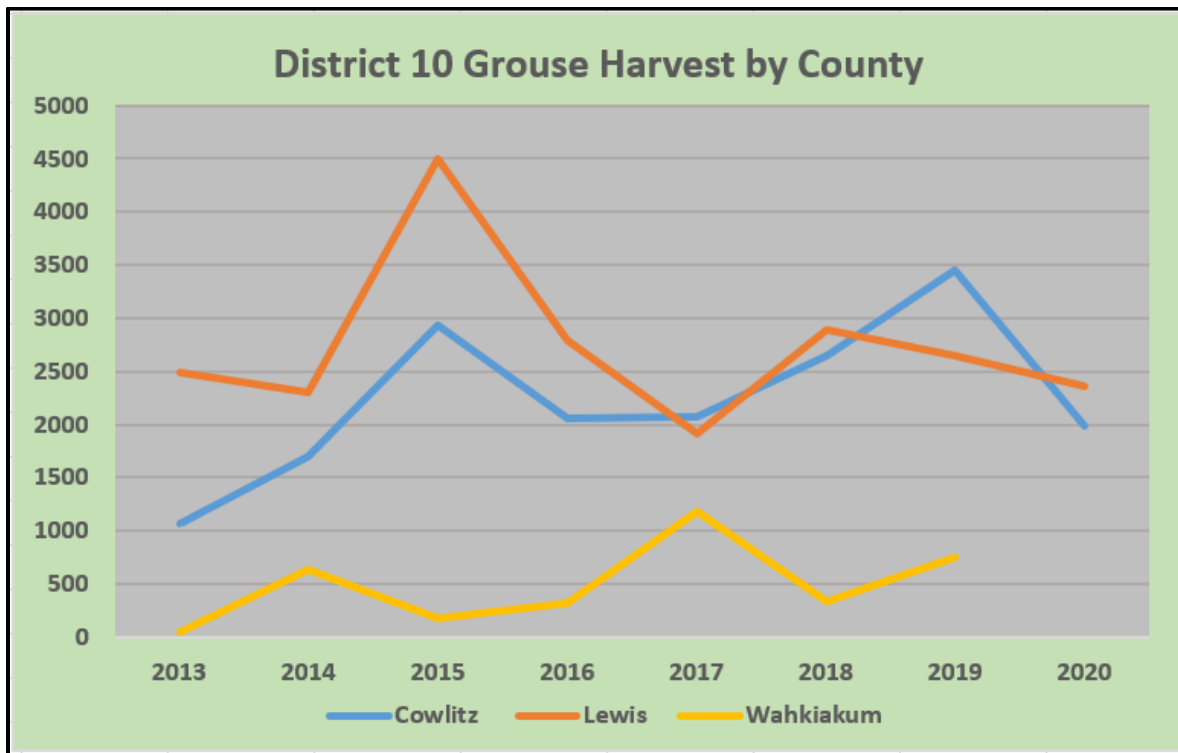
District 10 supports substantial forest grouse populations and is one of the top-producing areas for hunters in western Washington for ruffed grouse and sooty grouse. Spruce grouse are also present in the higher elevations of District 10. Grouse hunters will want to take note that the statewide grouse season for forest grouse in 2022 will again be Sept. 15-Jan. 15 (the season previously ran from Sept. 1-Dec. 31). This change was implemented for the 2021 hunting season after several rounds of public input and was put forward due to the increased vulnerability of breeding females to harvest during the first half of September. After brood break-up in mid-September, females are much less vulnerable to harvest. Since females drive population growth or decline, delaying the season start is a strategy to increase the grouse population. Some good strategies for hunting grouse include hunting riparian areas with mixed forest vegetation and walking closed or abandoned roads.

WDFW is collecting wings and tails from hunter-harvested grouse at barrel locations around the state. The submission of wings and tails is voluntary and helps wildlife managers determine the species, age, and sex composition of the grouse harvest locally. Locations where grouse barrels will be placed for the 2022 season can be found [online](#).





Grouse Wing and Tail Collection Barrels (WDFW)



2021 Harvest Information Not Yet Available

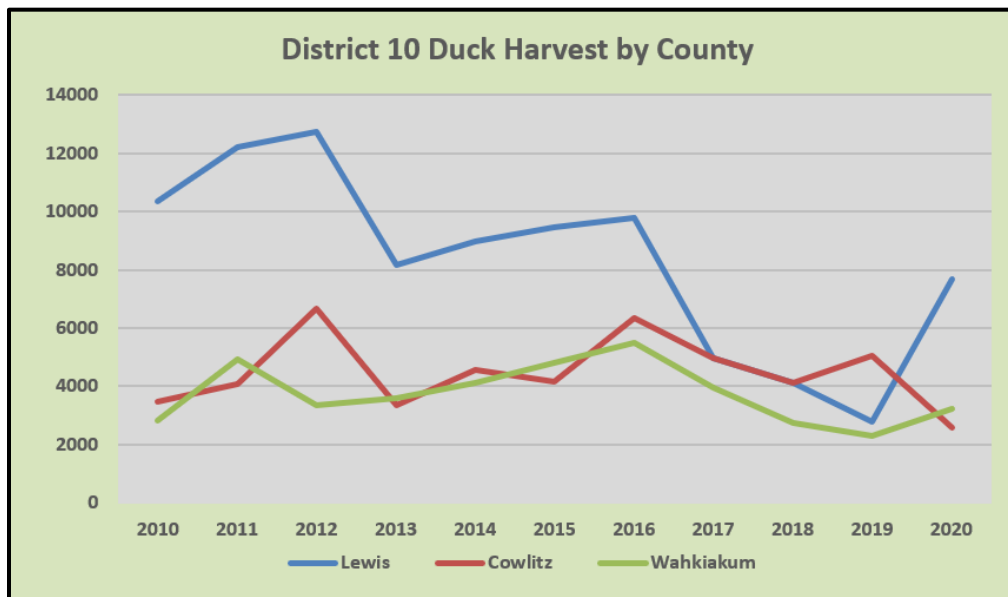
# WATERFOWL

## DUCK HUNTING

For the first time since onset of the Covid-19 pandemic, the Waterfowl Breeding Population and Habitat survey was conducted in 2022. The [U.S. Fish and Wildlife Service](#) has published the results of its breeding waterfowl surveys at [2022 Waterfowl Breeding Population and Habitat Surveys - Field Reports | U.S. Fish & Wildlife Service](#).

Hunters are reminded to consult the [Migratory Waterfowl Rules](#) pamphlet for details on hunting regulations. Prospective hunters should take special note of the late September season open only to youth hunters. Check the regulations closely for the details on this mentored hunting opportunity for early-season ducks.

Hunting early in the season is often best along the Columbia River and other large, permanent bodies of water. The Columbia River up to the Bonneville Dam is tidally influenced, so it is a good idea to be aware of outgoing tide conditions to avoid getting your boat stuck. Later in the season, high water might disperse birds, and hunters may have more success by targeting flooded farmlands. Prospective hunters should be aware that success often depends on the severity of fall/winter weather, with wet, blustery conditions generally producing better duck hunting in southwest Washington.



[2021 Harvest Information Not Yet Available](#)



Duck Hunting Success in the Lower Columbia River photo by Eric Holman (WDFW)

## GOOSE HUNTING

Hunters are reminded of the complex goose hunting regulations in Goose Management Area 2, designed to protect wintering populations of the dusky Canada goose. New hunters and those whose hunting authorization for Goose Management Area 2 was invalidated the previous year need to pass a goose identification exam with a minimum of 80% to receive their current-year hunting authorization. Goose hunters are encouraged to review the different subspecies of Canada geese in southwest Washington, where the ability to identify those birds is critical for a productive and enjoyable season.

Please review the [information regarding goose identification](#) before hunting this season, and see the [WDFW Migratory Waterfowl & Upland Game Seasons pamphlet](#) for more information.

While dusky Canada geese remain of concern, several other subspecies are abundant and support large annual harvests.

Goose hunters are also encouraged to take advantage of the early goose season in September. See the waterfowl hunting pamphlet for details on this enjoyable goose hunt for western Canada geese.



Canada geese during a banding effort in southwest Washington – Photo by Brian Davern

## PUBLIC LAND RESOURCES

### **DNR-Pacific Cascades Office (SW WA)**

601 Bond Road

PO Box 280

Castle Rock, WA 98611-0280

Phone: 360-577-2025

[WA - DNR](#)

[pacific-cascade.region@dnr.wa.gov](mailto:pacific-cascade.region@dnr.wa.gov)

[Link to purchase DNR quadrangle maps](#)

### **Gifford Pinchot National Forest**

#### **Headquarters**

10600 N.E. 51st Circle

Vancouver, WA 98682

360-891-5000

#### **Cowlitz Valley Ranger District**

10024 US Hwy 12

PO Box 670

Randle, WA 98377

360-497-1100

#### **Mt. Adams Ranger District**

2455 Hwy 141

Trout Lake, WA 98650

509-395-3402

#### **Mount St. Helens National Volcanic Monument**

42218 N.E. Yale Bridge Road

Amboy, WA 98601

360-449-7800



## PRIVATE LAND RESOURCES

### **WDFW PRIVATE LANDS ACCESS PROGRAM**

Public hunting opportunities are available through the Private Lands Access Program free of charge. The website will list the properties available by county, GMU or type of access allowed such as Feel Free to Hunt, Register to Hunt or Hunt by Reservation. Not all properties allow the same hunting options, landowners can select hunting all legal species or choose to be more restrictive such as deer and elk only, waterfowl only, etc. Read each [property description](#) [carefully for property rules, and maps of property locations](#).

**\*\* Every year new properties are added or may be removed, please frequently check the website for property updates. \*\***

<b>District 10 – Access Program acres as of 7/22/22</b>	<b>13,682 acres</b>
<b>Weyerhaeuser</b> (multiple parcels) - All species allowed, Feel Free to Hunt	<b>6,297 acres</b>
<b>Columbia Land Trust</b> (2 properties-Wahkiakum Co.) - Waterfowl Only, Register to Hunt	<b>259 acres</b>
<b>Woodland Bottoms</b> (2 properties) - Pheasant Only, Feel Free to Hunt	<b>369 acres</b>
<b>NEW! Nisqually Land Trust</b> (Catt Creek Rd.) - Deer and Elk Only, Feel Free to Hunt	<b>200 acres</b>



Photo by Monique Ferris (WDFW).

For Private Lands Access program information within Region 5 contact:

Monique (Ferris) Gray  
360-696-6211 ext. 6721

[Monique.ferris@dfw.wa.gov](mailto:Monique.ferris@dfw.wa.gov)

*Please be respectful, hunting on private land is a privilege.*



Private Lands Access Program, Register to Hunt property in Wahkiakum County, photo by Monique Ferris (WDFW).

## PRIVATE FORESTLANDS

### Green Diamond

- Recreation permits must be purchased for motorized and non-motorized access.

### Manulife (formerly Hancock) Forest Management (HFM)

HFM Cathlamet Tree Farm

- Open for non-motorized recreational access

### Pacificorps

Generally open for non-motorized recreational access \_ NO CAMPING

[Lewis River Hunting Access \(pacificorp.com\)](http://pacificorp.com)

### Pope Resources/Olympic Resource Management

- Was recently acquired by Rayonier

### Rayonier

- Hunting access by lease or permit depending on location
- [Rayonier Hunting | Recreation Licenses | Hunting & Recreation Licenses](#)
- 855-729-4868

### Port Blakely

- Generally open to public access
- Check website for information on roads that are open to walk-in or motorized access

### Sierra Pacific

- Generally open to walk-in, day-use access
- Access hotline 360-623-1299

### Weyerhaeuser

- Includes St. Helens Tree Farm, Yacolt (Columbia River East), Vail, Pe Ell, Columbia Timberlands
  - Access is by permit only except on lands enrolled in the WDFW Private Lands Access Program (Feel Free to Hunt).
  - Motored and non-motorized permits available
- [Recreational access webpage](#)
  - Access hotline-866-636-6531